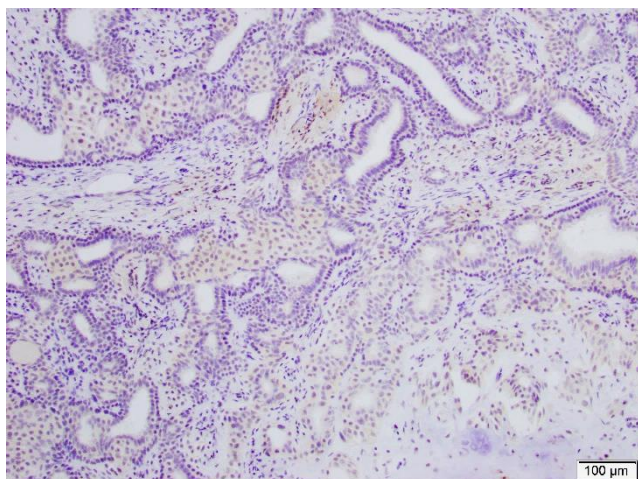
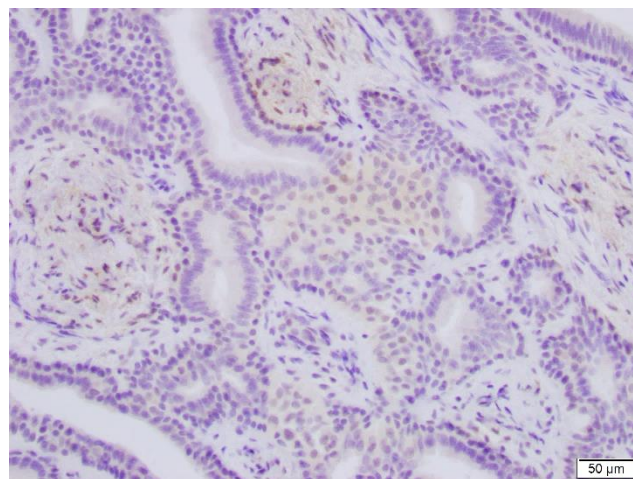




Supplementary Figures

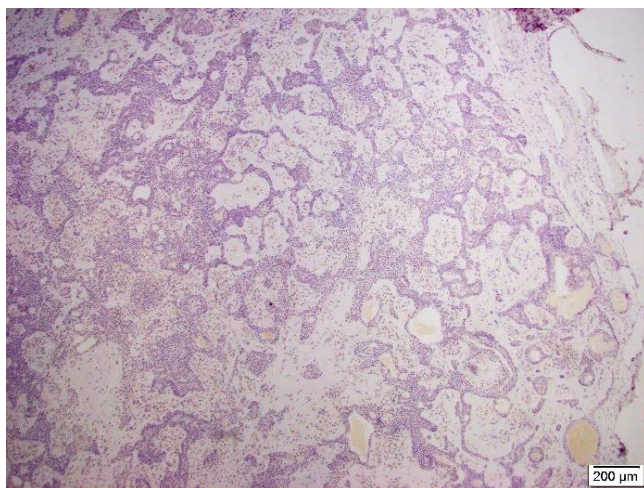


(a)

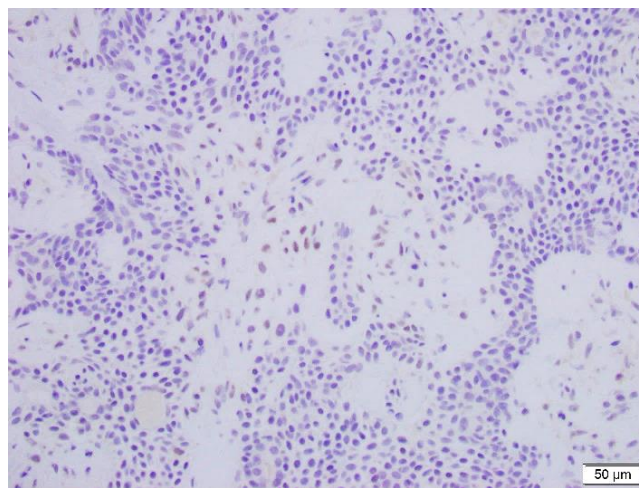


(b)

Figure S1. This figure shows weak (1+) TFE3 staining in less than 20% of tumor cells in case #5 with benign features (a - 10X, b - 20X).



(a)



(b)

Figure S2. This figure shows weak (1+) TFE3 staining in less than 20% of tumor cells in case #6 with benign features (a - 4X, b - 20X).

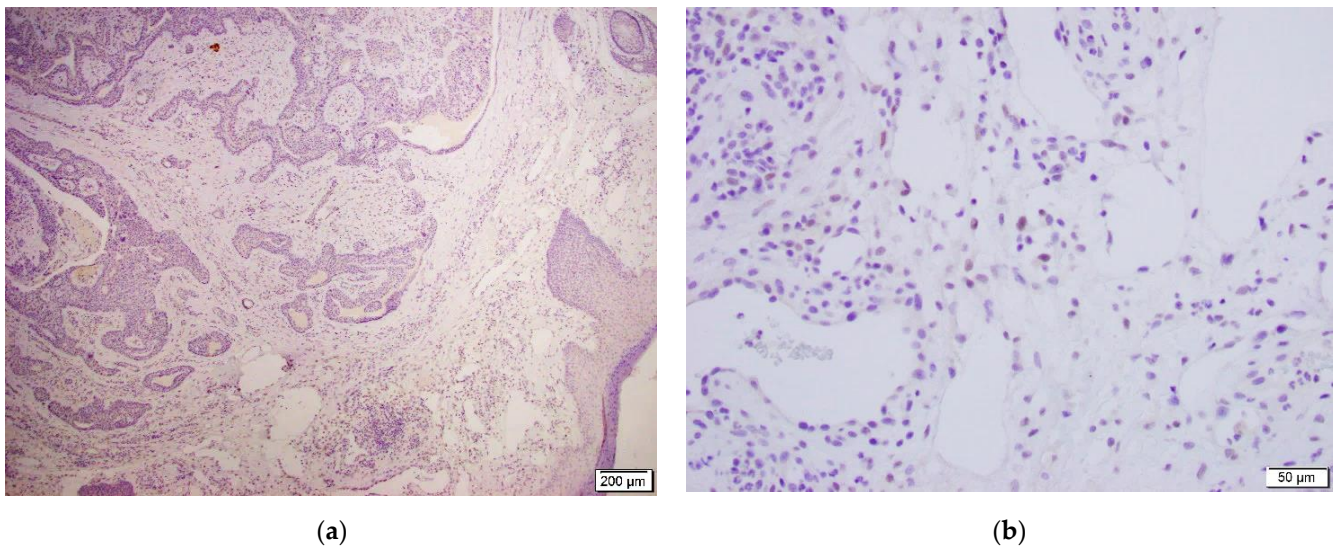


Figure S3. This figure shows weak (1+) TFE3 staining in less than 20% of tumor cells in case #7 with benign features (a - 4X, b - 20X).

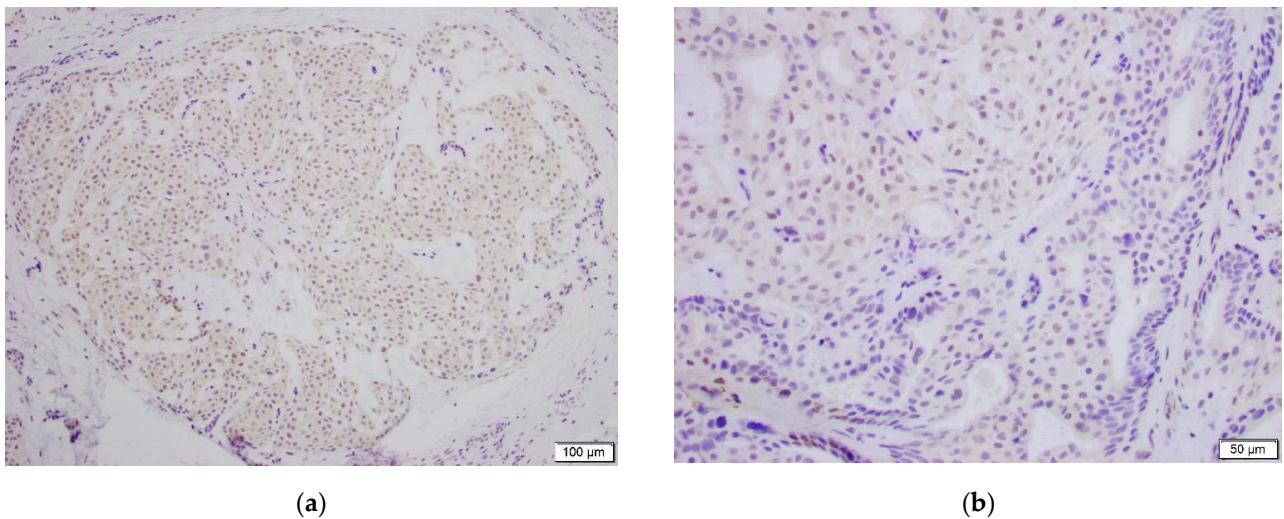


Figure S4. This figures shows weak (1+) TFE3 staining in less than 20% of tumor cells in case #8 with benign features (a - 10X, b - 20X).

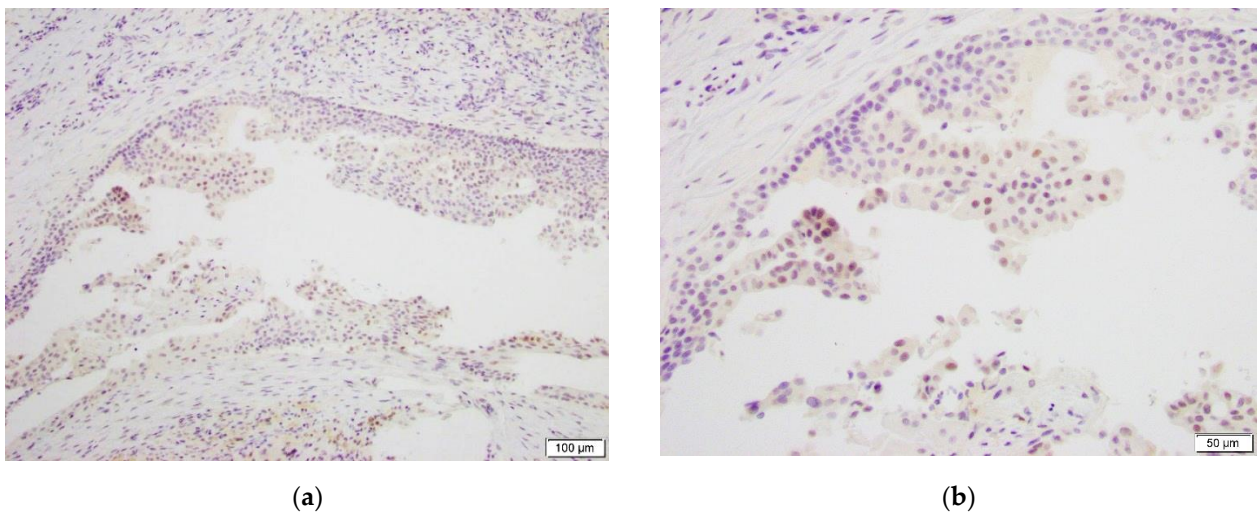


Figure S5. This figure shows weak (1+) TFE3 staining in less than 20% of tumor cells in case #9 with benign features (a - 10X, b - 20X).

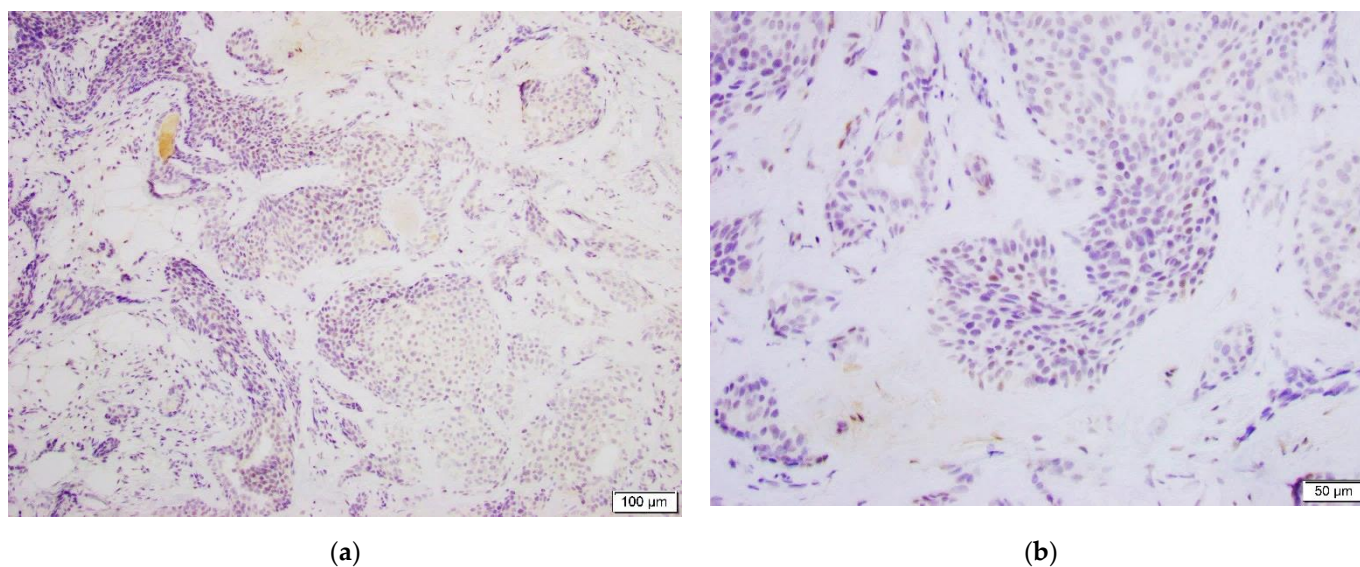


Figure S6. This figure shows weak (1+) TFE3 staining in less than 20% of tumor cells in case #10 with benign features (a - 10X, b - 20X).

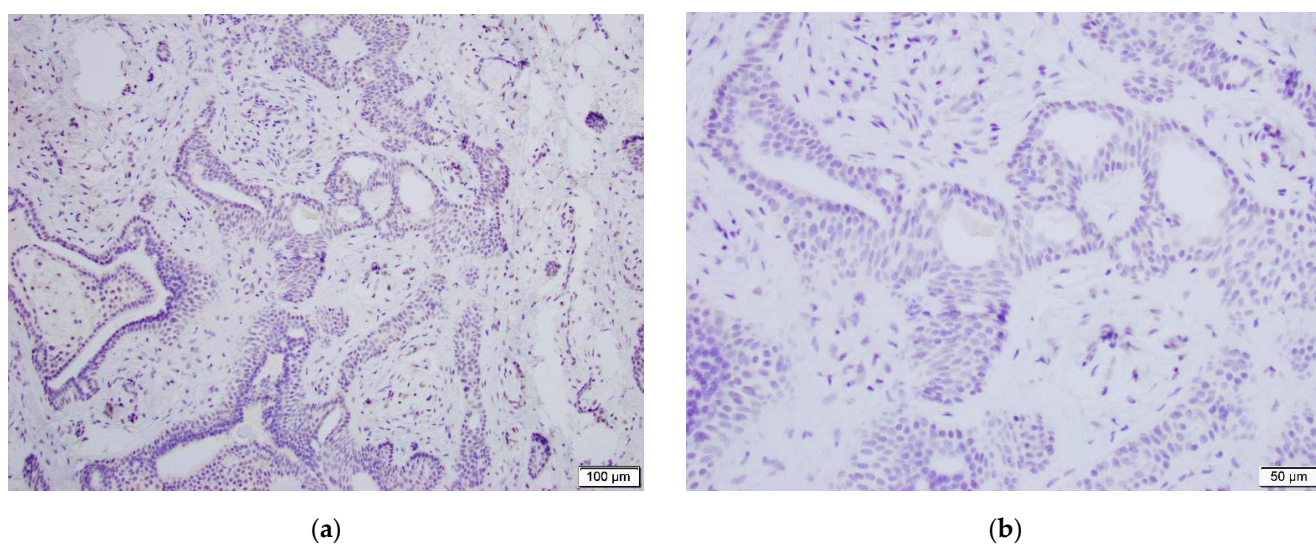


Figure S7. This figure shows negative TFE3 staining in case #3 with benign features (a - 10X, b - 20X).

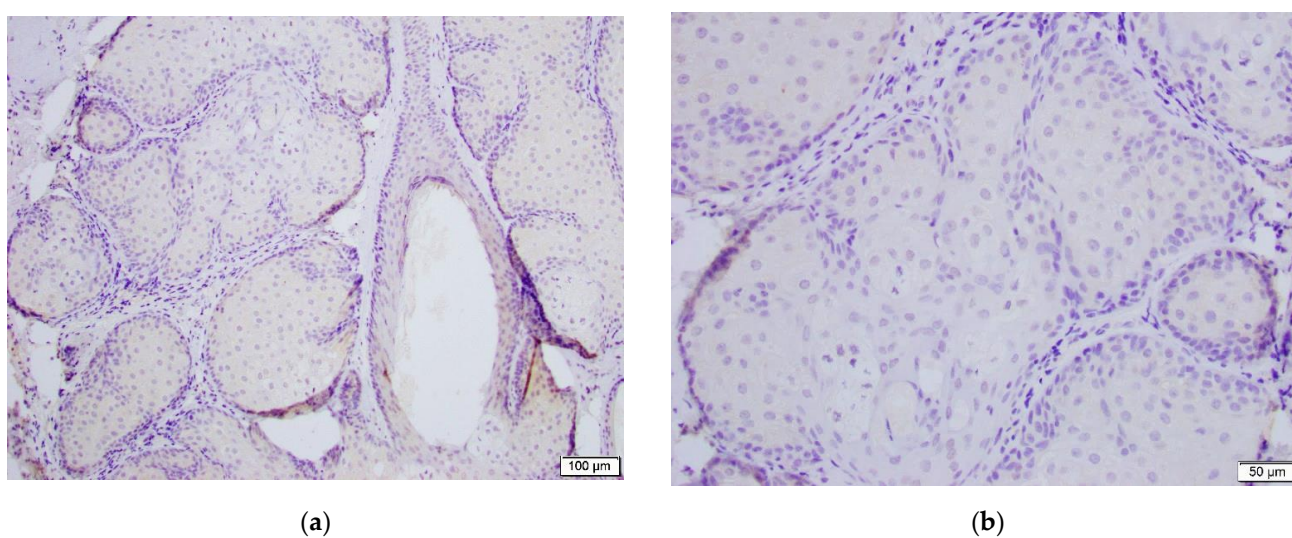
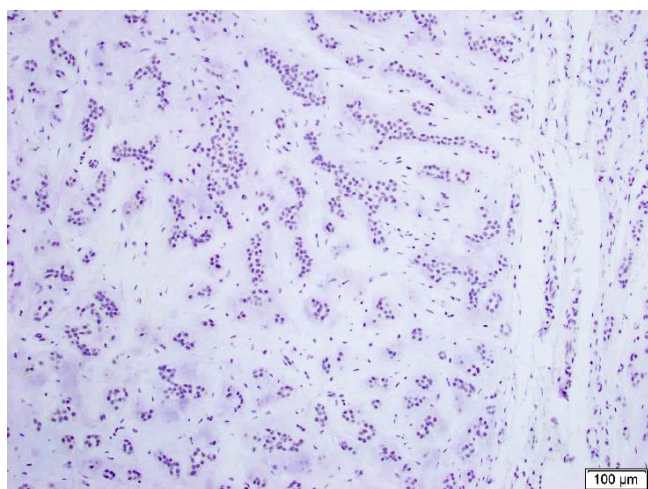
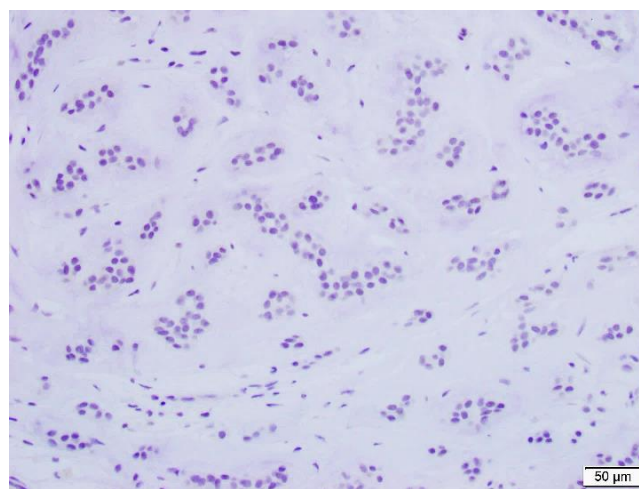


Figure S8. This figure shows negative TFE3 staining in case #4 with benign features (a - 10X, b - 20X).

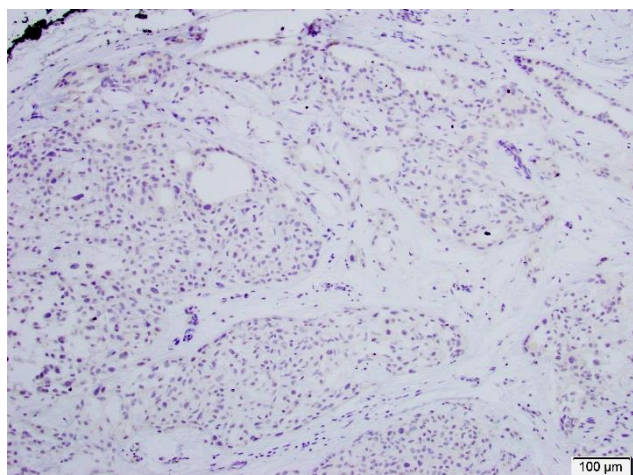


(a)

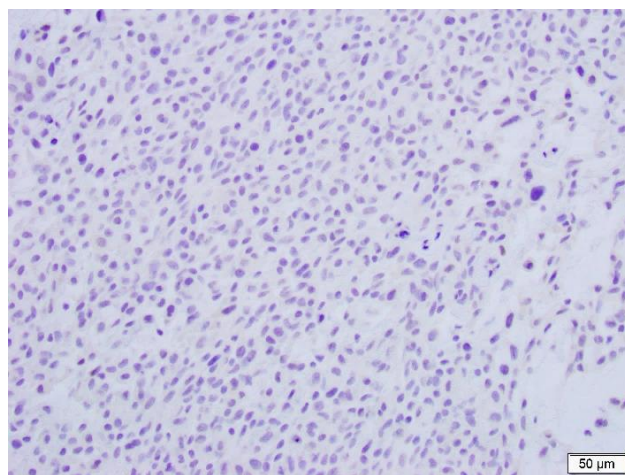


(b)

Figure S9. This figure shows negative TFE3 staining in case #11 with benign features (a - 10X, b - 20X).



(a)



(b)

Figure S10. This figure shows negative TFE3 staining in case #12 with atypical features (a - 10X, b - 20X).