

Article

# Exploring the Antioxidant and Anti-Inflammatory Potential of *Wilckia maritima*: *In vitro* and *Insilco* investigations

Mehreen Jabeen<sup>1</sup>, Muhammad Uzair<sup>1</sup>, Farhan Siddique<sup>1,2\*</sup>, Muhammad Shoaib Khan<sup>1</sup>, Muhammad Hanif<sup>3</sup>, Ahmad Mohammad Salamatullah<sup>4</sup>, Hiba-Allah Nafidi<sup>5</sup> and Mohammed Bourhia<sup>6</sup>

<sup>1</sup>Department of Pharmaceutical Chemistry, Faculty of Pharmacy, Bahauddin Zakariya University, 60800, Multan Pakistan

<sup>2</sup>Laboratory of Organic Electronics, Department of Science and Technology, Linköping University, SE-60174 Norrköping, Sweden

<sup>3</sup>Department of Pharmaceutics, Faculty of Pharmacy, Bahauddin Zakariya University, 60800, Multan Pakistan

<sup>4</sup>Department of Food Science & Nutrition, College of Food and Agricultural Sciences, King Saud University, 11 P.O. Box 2460, Riyadh 11451, Saudi Arabia

<sup>5</sup>Department of Food Science, Faculty of Agricultural and Food Sciences, Laval University, 2325 Quebec City, QC G1V 0A6, Canada

<sup>6</sup>Laboratory of Chemistry and Biochemistry, Faculty of Medicine and Pharmacy, Ibn Zohr University, Laayoune 70000, Morocco

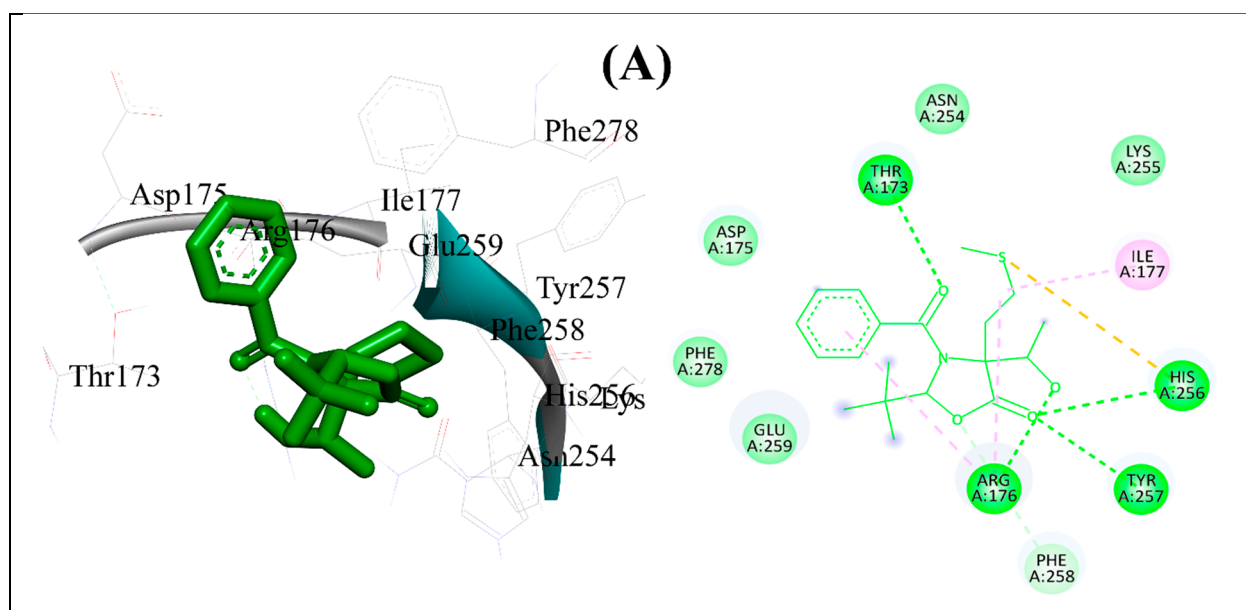
\* Correspondence: drfarhansiddique@bzu.edu.pk (FS); bourhimoahmmmed@gmail.com (BM)

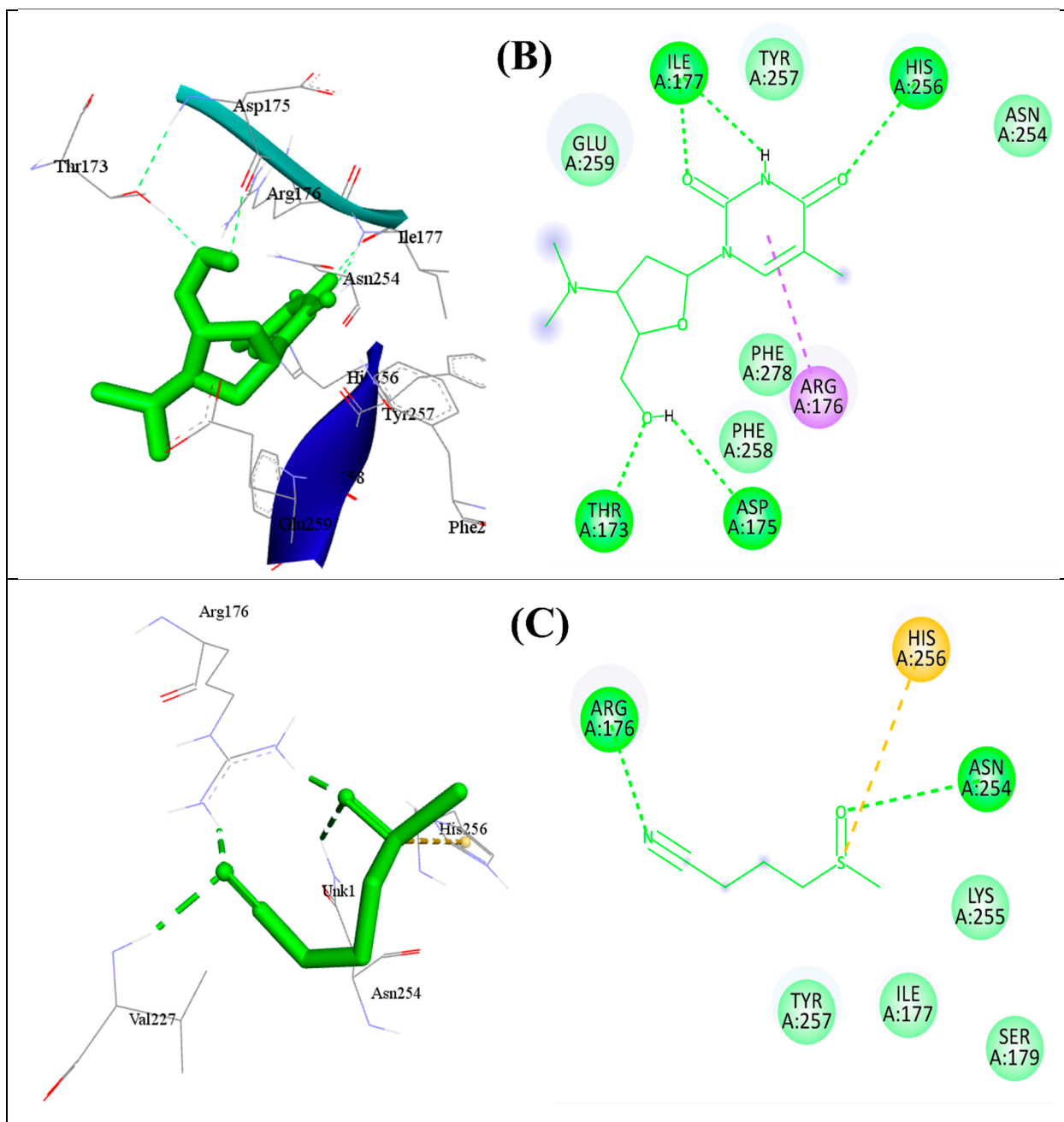
## Contents

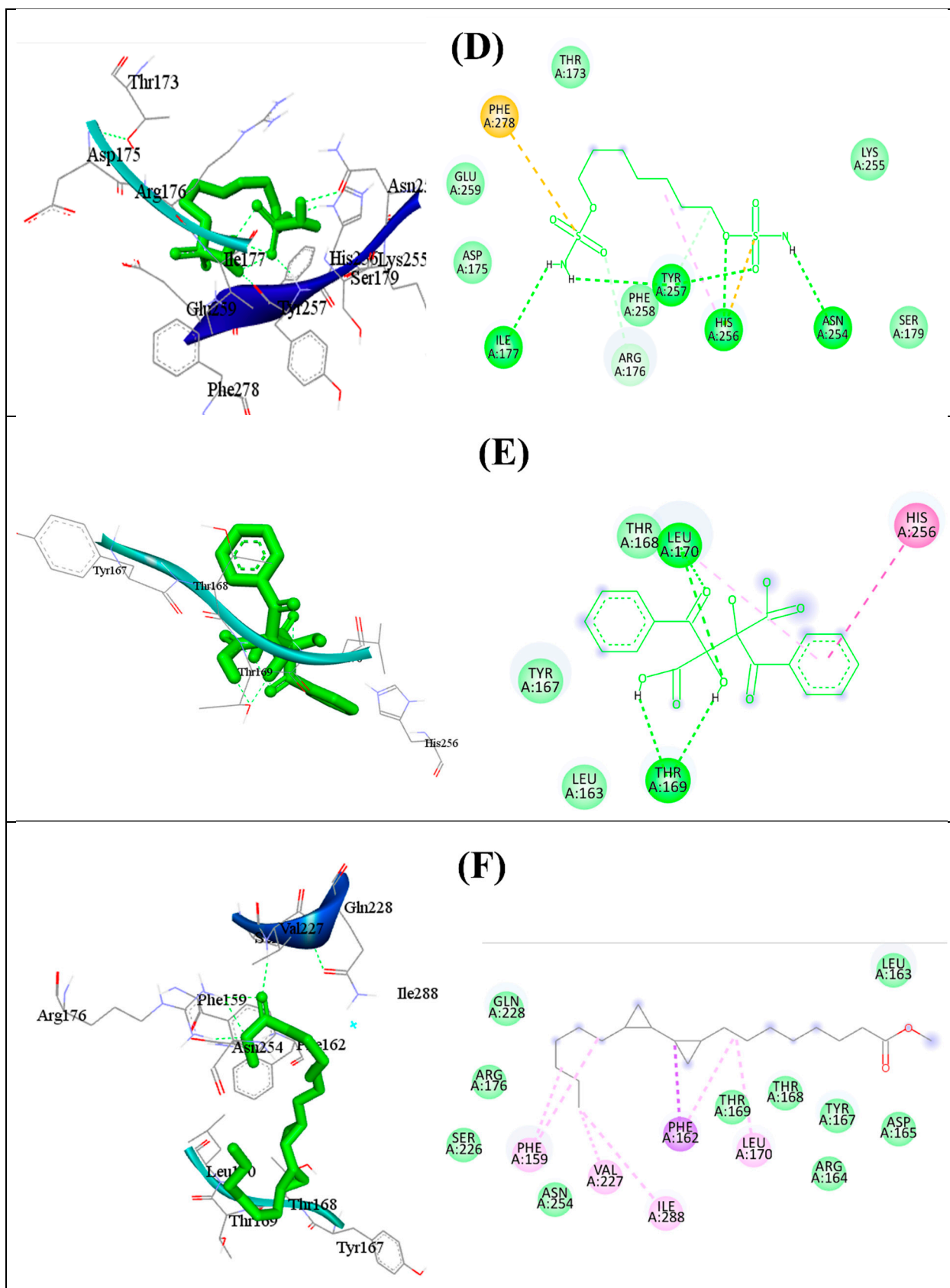
Table S1 Predicted binding energies via molecular docking. ....	2
Figure S1 The putative 2D and 3D binding mode of all investigated compounds (A-G) using target protein 1R4U. Green dashes are indicating hydrogen bonding whereas red dashes are indicating hydrophobic interactions. ....	5
Figure S2 The putative 2D and 3D binding mode of <i>all investigated compounds</i> (A-G) using target protein 3O8Y. Green dashes are indicating hydrogen bonding whereas red dashes are indicating hydrophobic interactions. ....	8
Figure S3 Thin layer chromatography results for studied compounds. ....	8

Table S1 Predicted binding energies via molecular docking.

Ligand	Docking score with 1R4U	Docking score with lipoxygenase protein (3O8Y)
A	-6.88	-6.21
B	-6.18	-6.41
C	-3.82	-3.56
D	-6.52	-1.19
E	-3.49	-5.93
F	-4.39	-4.96
G	-4.04	-4.98







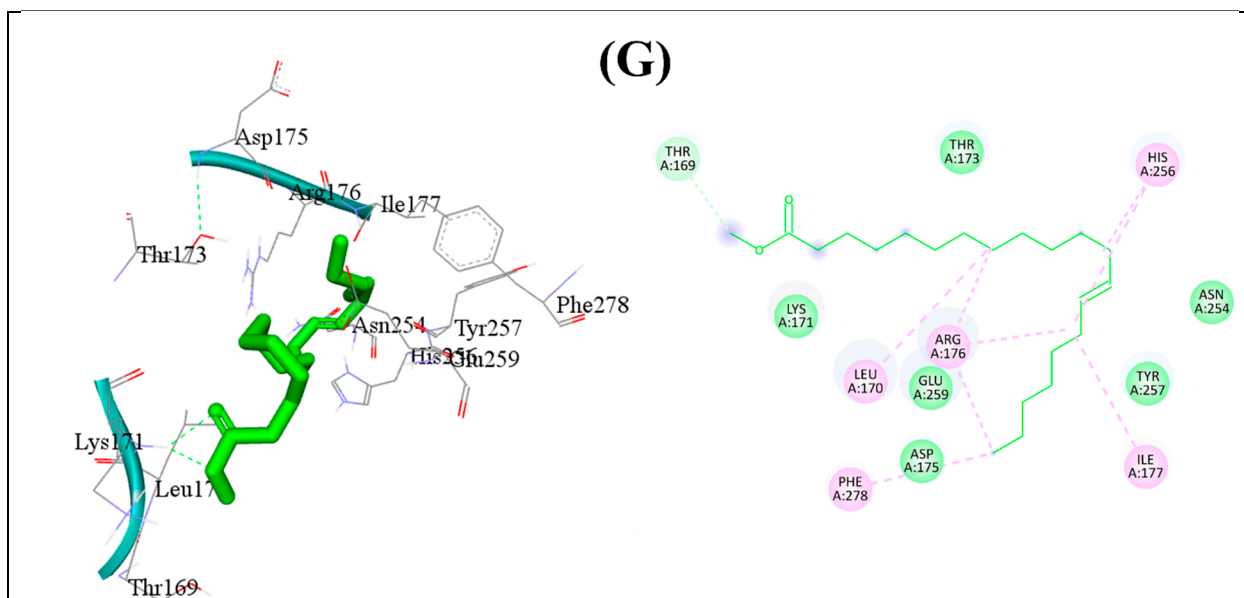
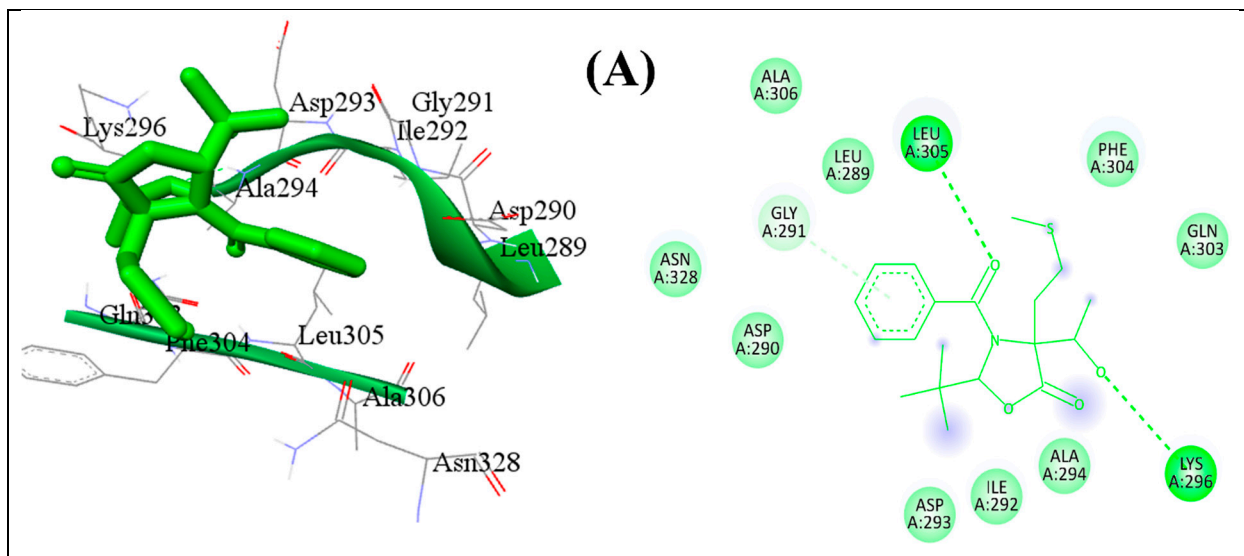
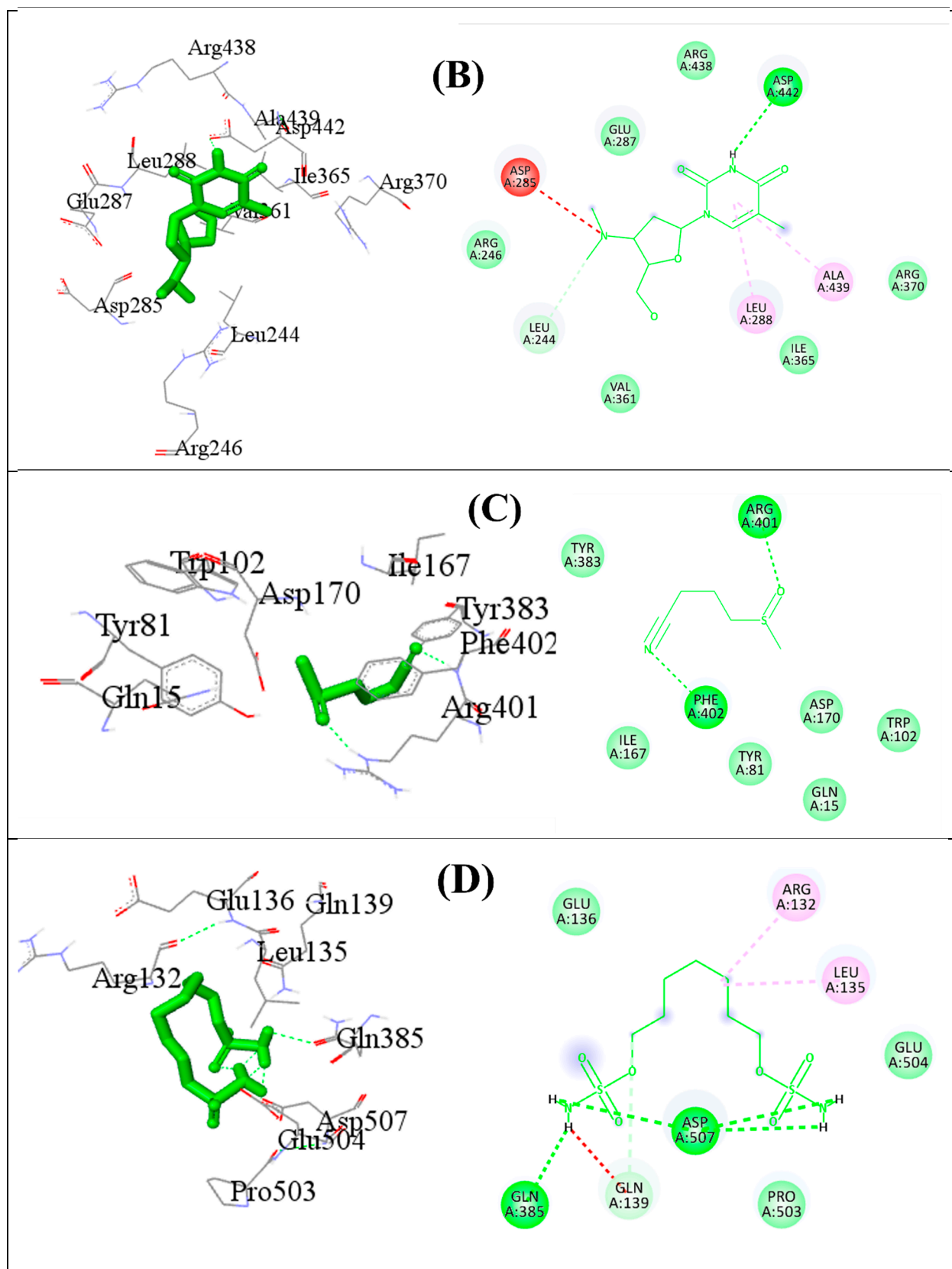


Figure S1 The putative 2D and 3D binding mode of all investigated compounds (A-G) using target protein 1R4U. Green dashes are indicating hydrogen bonding whereas red dashes are indicating hydrophobic interactions.





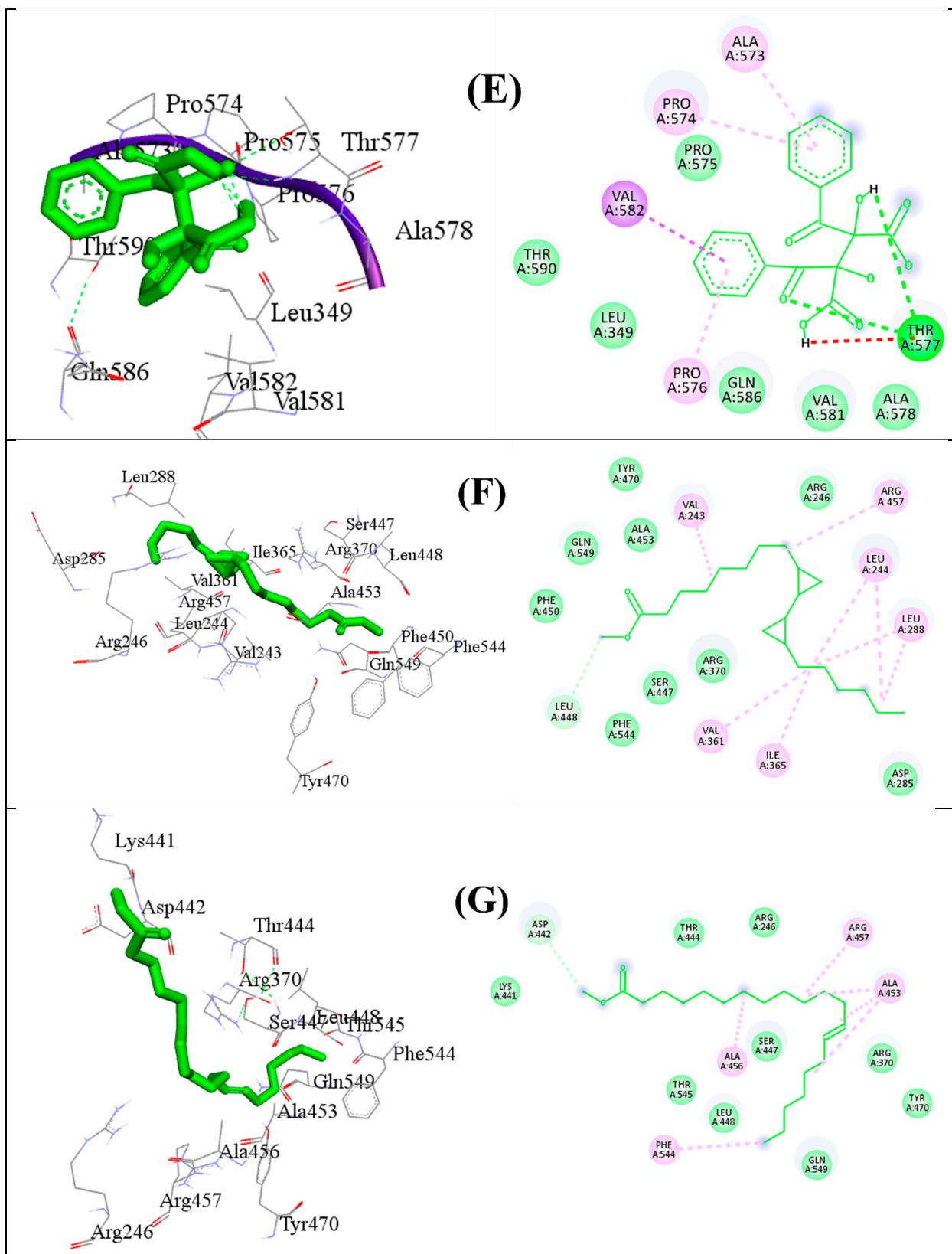


Figure S2 The putative 2D and 3D binding mode of *all investigated compounds (A-G)* using target protein 3O8Y. Green dashes are indicating hydrogen bonding whereas red dashes are indicating hydrophobic interactions.

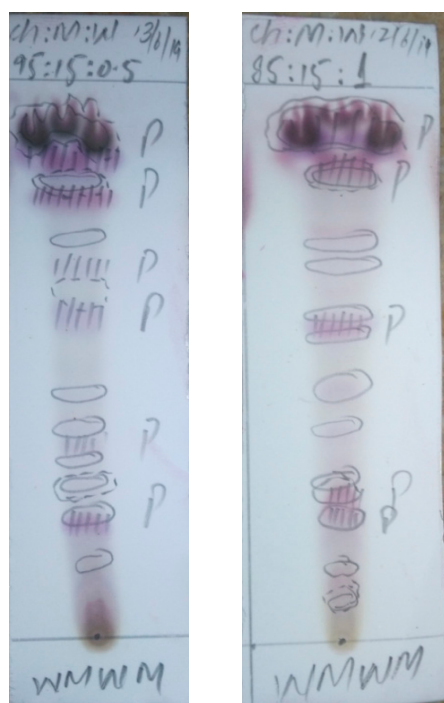


Figure S3 Thin layer chromatography results for studied compounds.