

Supplementary Material: Effect of the Non-immunosuppressive MPT pore Inhibitor Alisporivir on the Functioning of Heart Mitochondria in Dystrophin-deficient *mdx* Mice

Mikhail V. Dubinin ^{1,*}, Vlada S. Starinets ^{1,2}, Eugeny Yu. Talanov ², Irina B. Mikheeva ², Natalia V. Belosludtseva ², Dmitriy A. Serov ³, Kirill S. Tenkov ¹, Evgeniya V. Belosludtseva ¹, and Konstantin N. Belosludtsev ^{1,2}

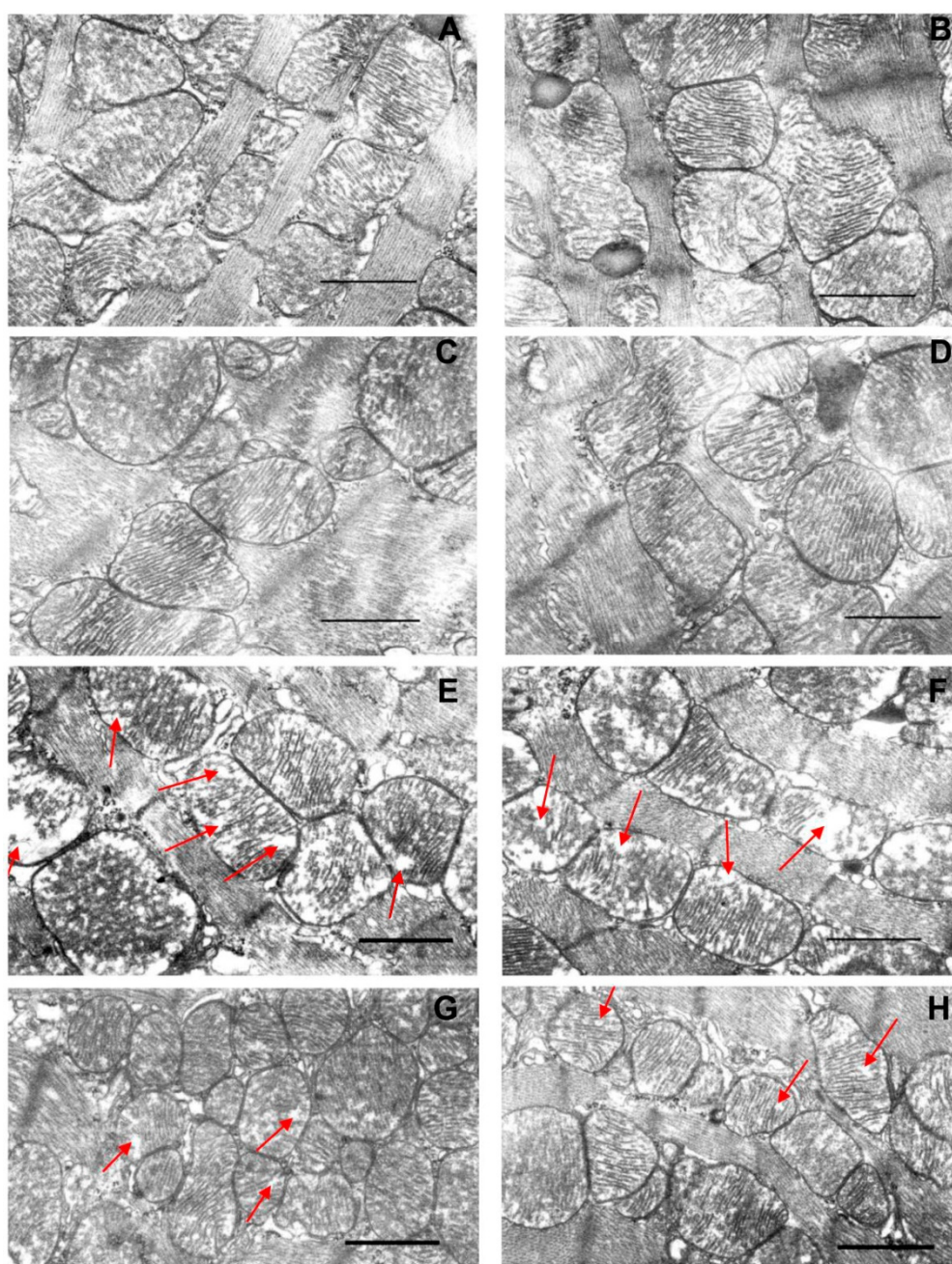


Figure S1. Typical electron micrographs of left ventricular mitochondria in the experimental groups: WT (A,B), WT+Ali (C,D), *mdx* (E,F) and *mdx*+Ali (G,H). Samples from two hearts were analyzed in each experimental group. The bar is equal to 1 μ m. Red arrows indicate individual abnormal mitochondria.