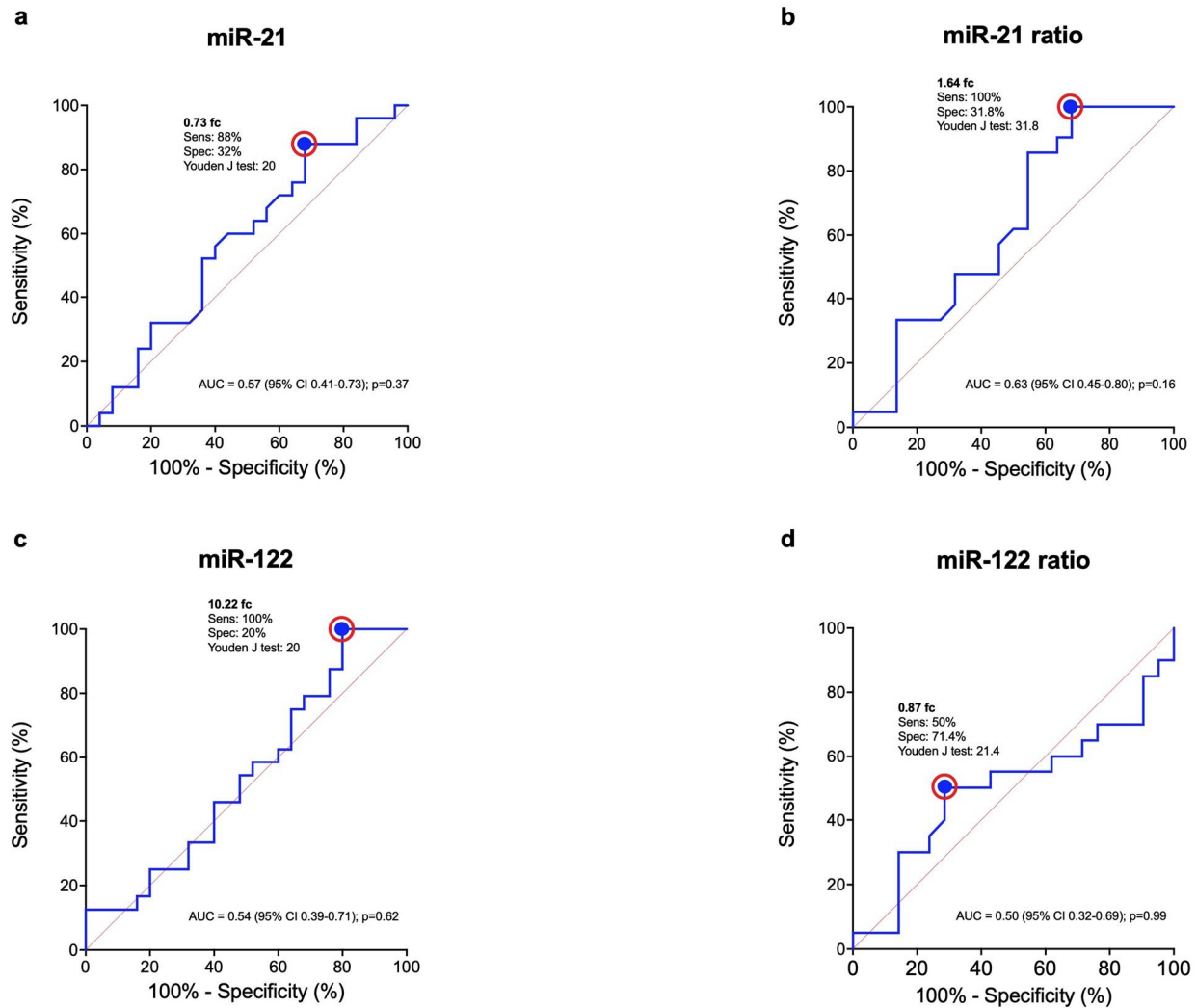


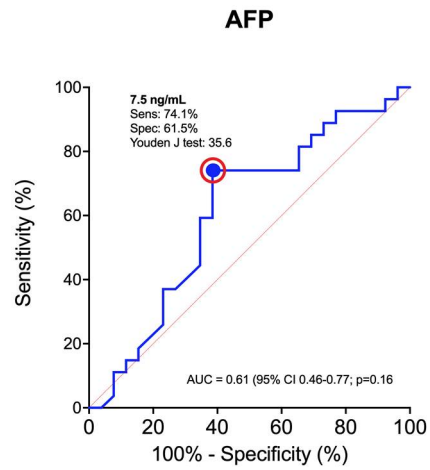
**Table S1.** Levels of miRNAs (miR-93, miR-103a, miR-425) used as internal reference controls for normalization in our study.

	miR-93	miR-103a	miR-425
Healthy subjects	13.60 ± 0.56 ct	13.37 ± 0.62 ct	16.12 ± 0.77 ct
Cirrhotics	13.89 ± 1.41 ct	13.72 ± 1.47 ct	16.14 ± 1.32 ct
HCC pre-TACE	14.79 ± 1.91 ct	14.67 ± 2.02 ct	16.78 ± 1.52 ct
HCC post-TACE	15.11 ± 2.11 ct	15.06 ± 2.30 ct	17.12 ± 1.63 ct

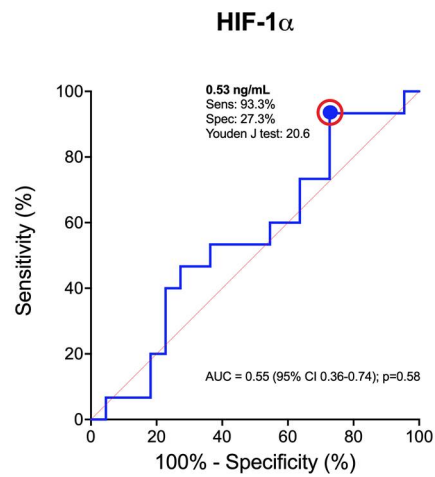
miRNA levels, expressed as threshold cycles (ct), are reported in the table as mean ± standard deviation (SD).



**Figure S1.** ROC curves used to identify the cut-off for miR-21 (a), miR-21 ratio (b), miR-122 (c) and miR-122 ratio (d).



**Figure S2.** ROC curve for the identification of AFP cut-off.



**Figure S3.** ROC curve for the identification of HIF-1 $\alpha$  cut-off.