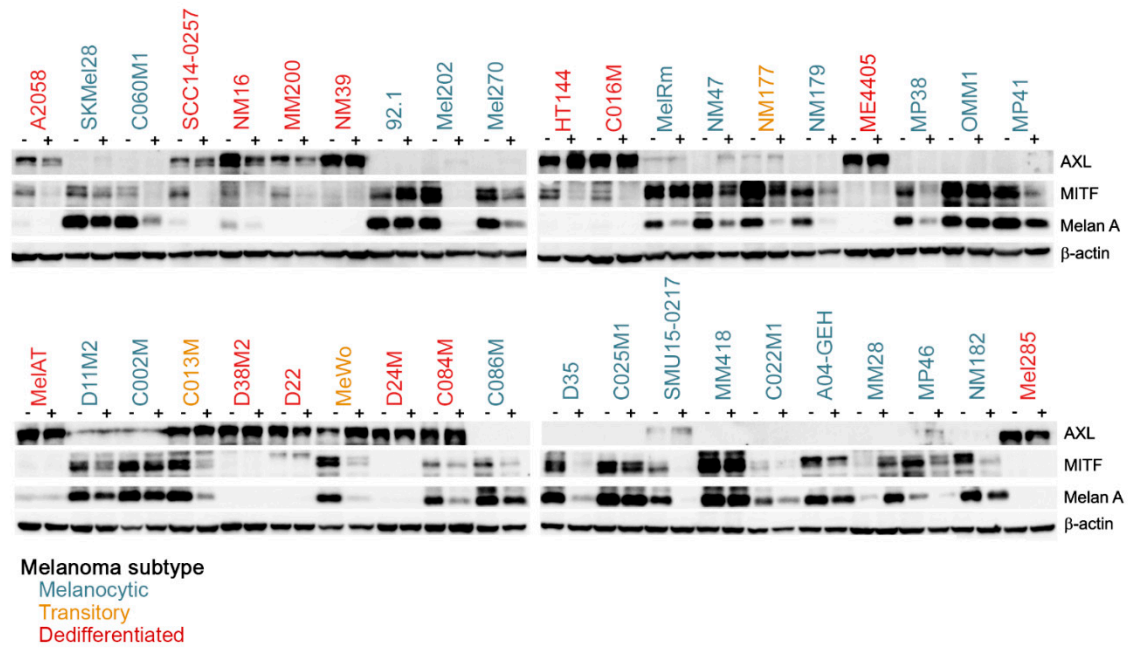
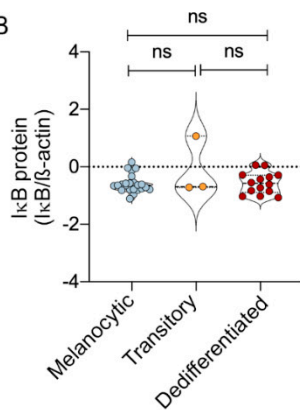


Supplementary Figure 1

A

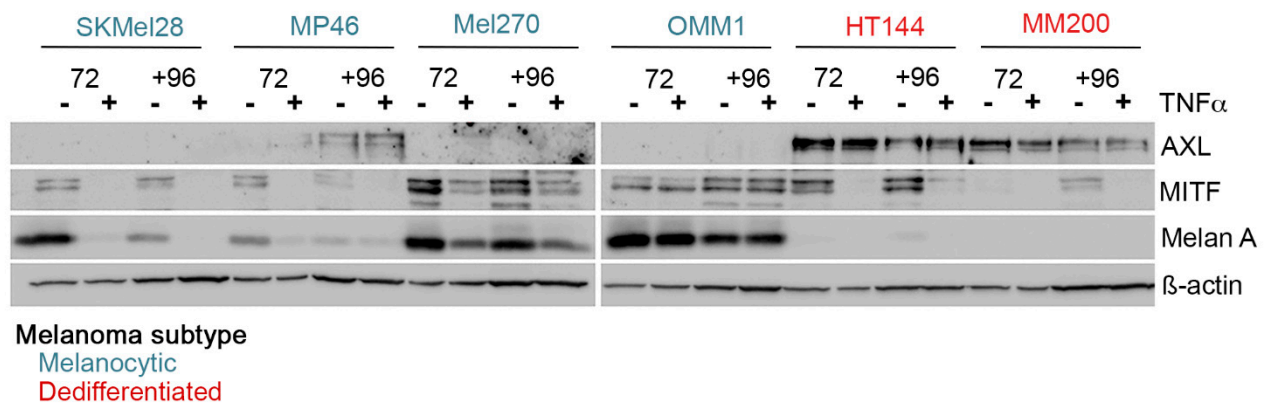


B



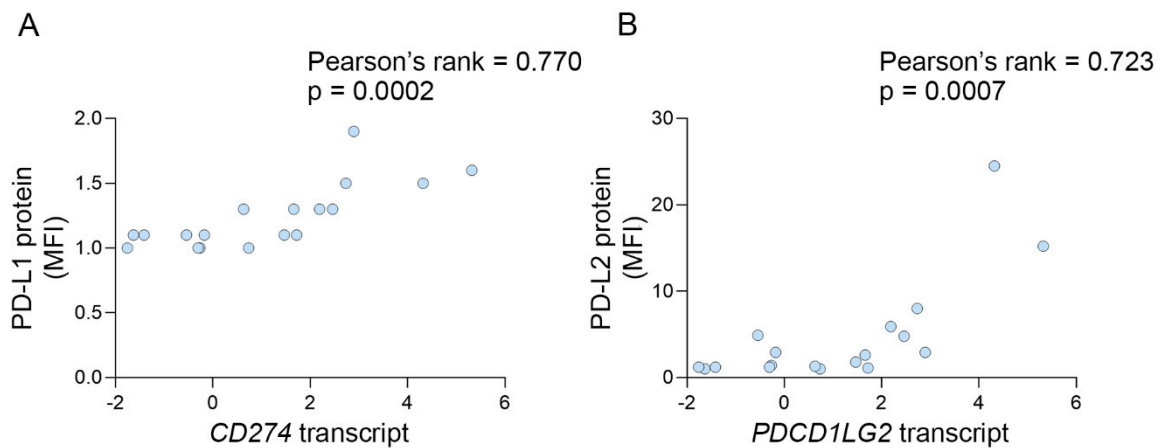
Supplementary Figure S1. Expression of melanoma subtype signatures in response to TNFα. (A) Western blots of melanocytic (blue), transitory (orange) and dedifferentiated (red) melanoma cell lysates showing AXL, MITF and Melan A accumulation, 72 h after treatment with BSA control (-) or TNFα (+). (B) TNFα-induced IκB expression (72 h after TNFα treatment; values normalized to β-actin and converted to z-scores) in melanocytic (blue), transitory (orange) and neural crest-like dedifferentiated (red) melanoma cell lines. Each dot represents the average of three independent experiments for each cell line. Comparisons between groups were determined by one-way ANOVA and Tukey's multiple comparisons test.

Supplementary Figure 2



Supplementary Figure S2. TNF α -induced dedifferentiation is reversible. Western blots of melanocytic (SKMel28, MP46, MEL270, OMM1) and dedifferentiated (HT144, MM200) melanoma cell lysates showing AXL, MITF and Melan A expression 72 h (72) after treatment with BSA control (-) or TNF α (+). TNF α was either removed (-) or added (+) for another 96 h (+96).

Supplementary Figure 3



Supplementary Figure S3. PD-L1 and PD-L2 protein and transcript expression. Scatterplots showing correlation of A) PD-L1 protein with the CD274 transcript and B) PD-L2 protein with the PDCD1LG2 transcript at baseline and post TNF α treatment in nine melanoma cell lines with matched transcriptome data. Correlation calculated using Pearson's rank correlation coefficient, $p < 0.05$.