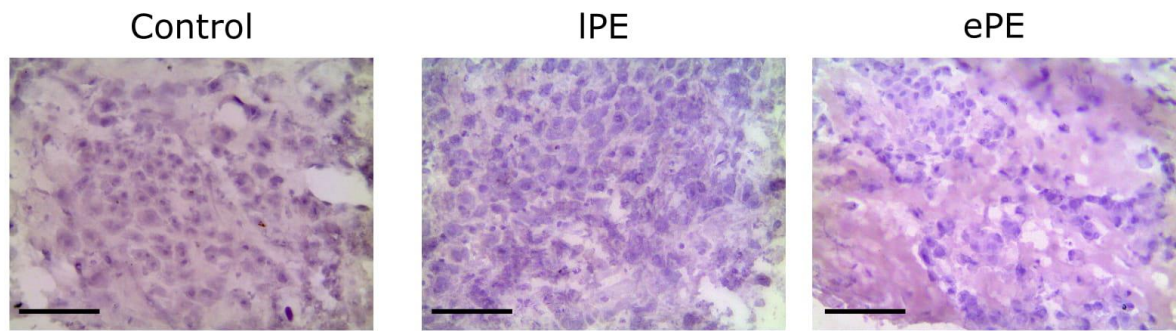
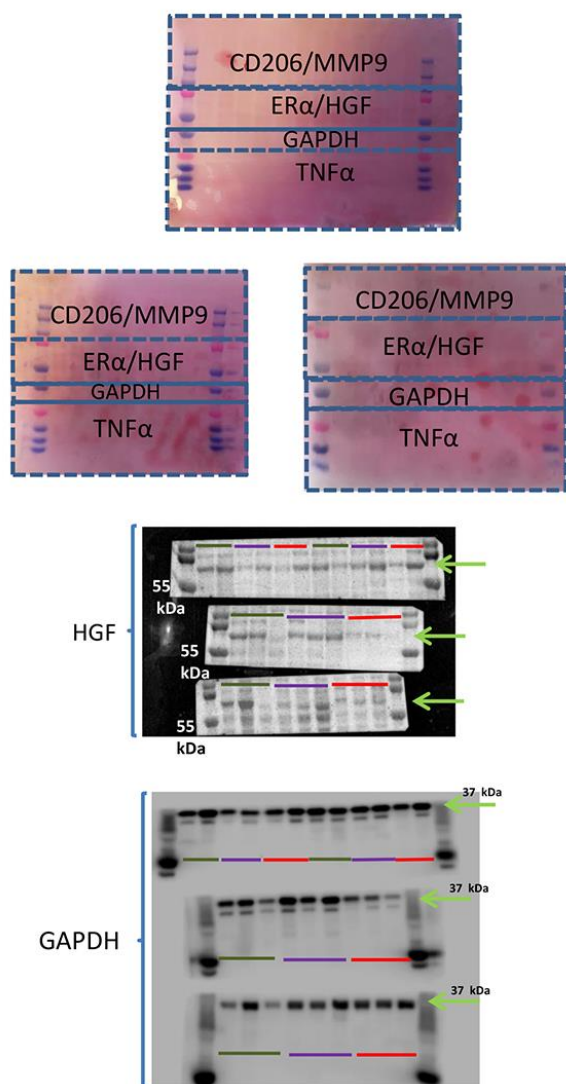


### Supplementary data

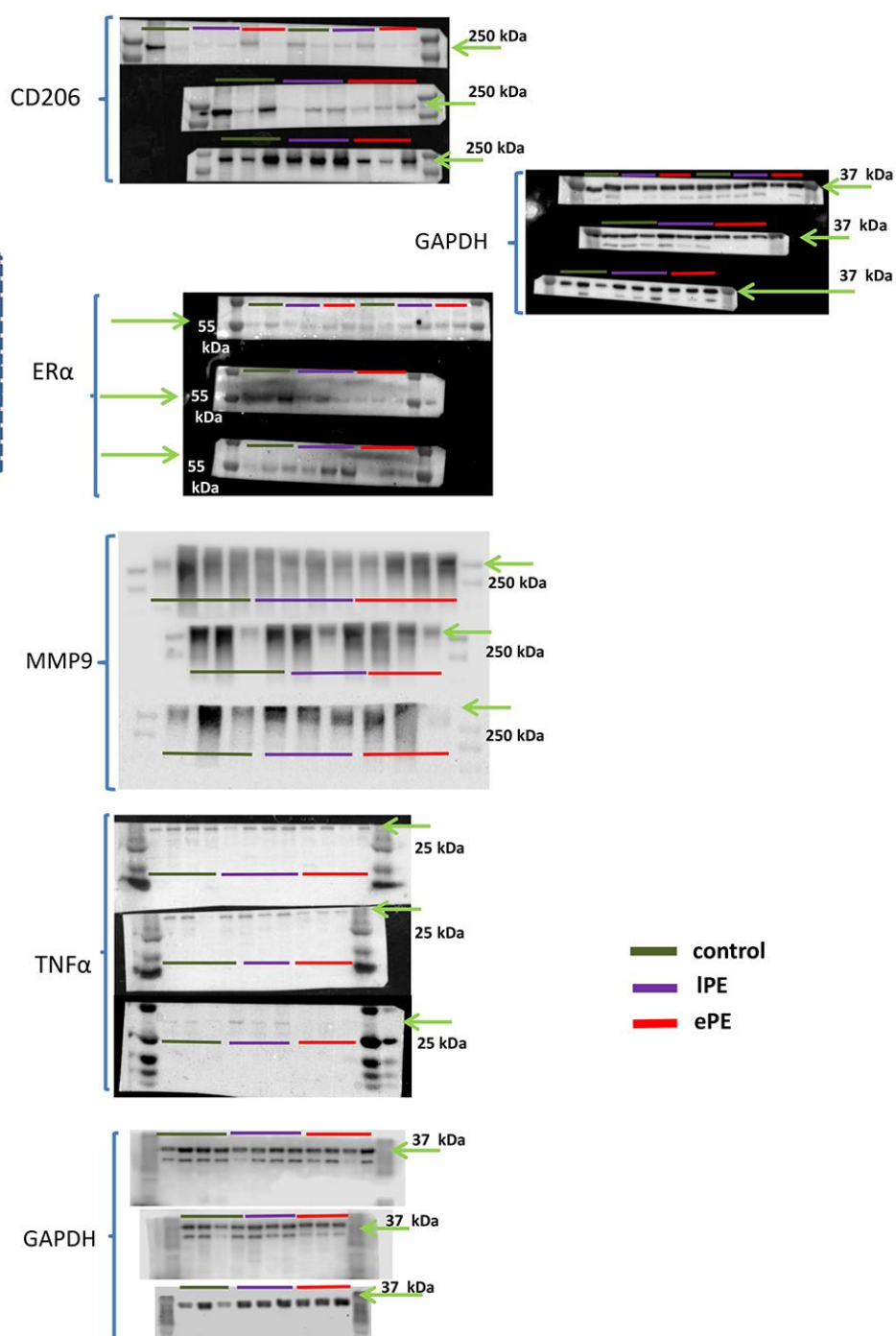


**Figure S1** Representative slices of snap-frozen placenta samples from the late-onset (IPE) and early-onset (ePE) patients and women with physiological pregnancy (control), for verification of decidual membrane. Slices stained with hematoxylin. Magnification,  $\times 200$ ; bars, 100  $\mu\text{m}$ .

### Ponceau S staining. Scheme of cutting



### Chemiluminescence detection. Western blot membranes



**Figure S2** Full-size membrane after blotting of polyacrylamide gel with placenta samples from the control group, late-onset PE (IPE) and early-onset PE (ePE). Schemes of membrane Ponceau S staining and cutting are shown. After visualization of the proteins with Ponceau S membranes were cut as indicated with a dotted line and stained with the mentioned antibody. The analyzed band is marked with a green arrow, position of samples from the concrete group is marked with color line.