

Supplementary Materials

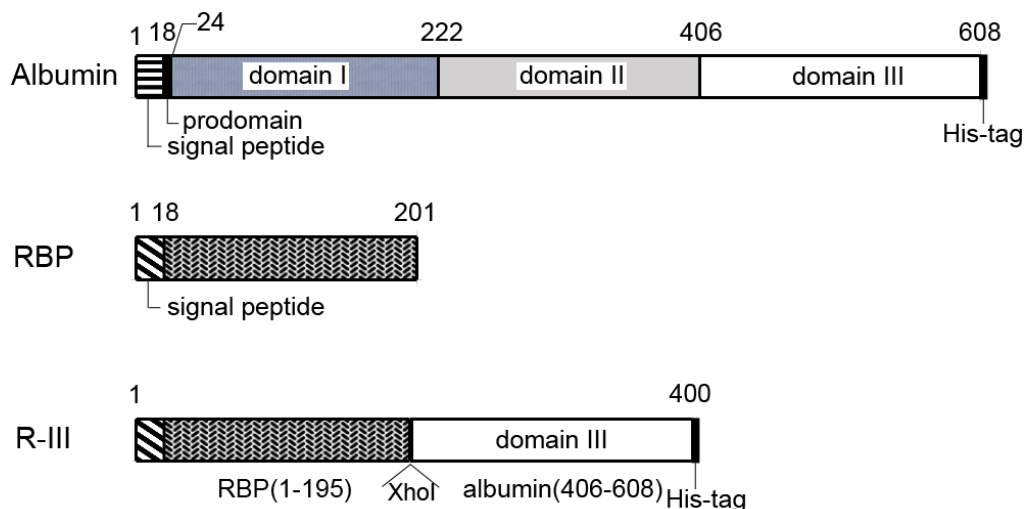


Figure S1. Schematic diagram of the retinol-binding protein (RBP)–albumin domain III fusion protein, in comparison with full-length albumin and RBP. Note that the fusion protein is histidine tagged at the C-terminal end. The numbers indicate amino acids.

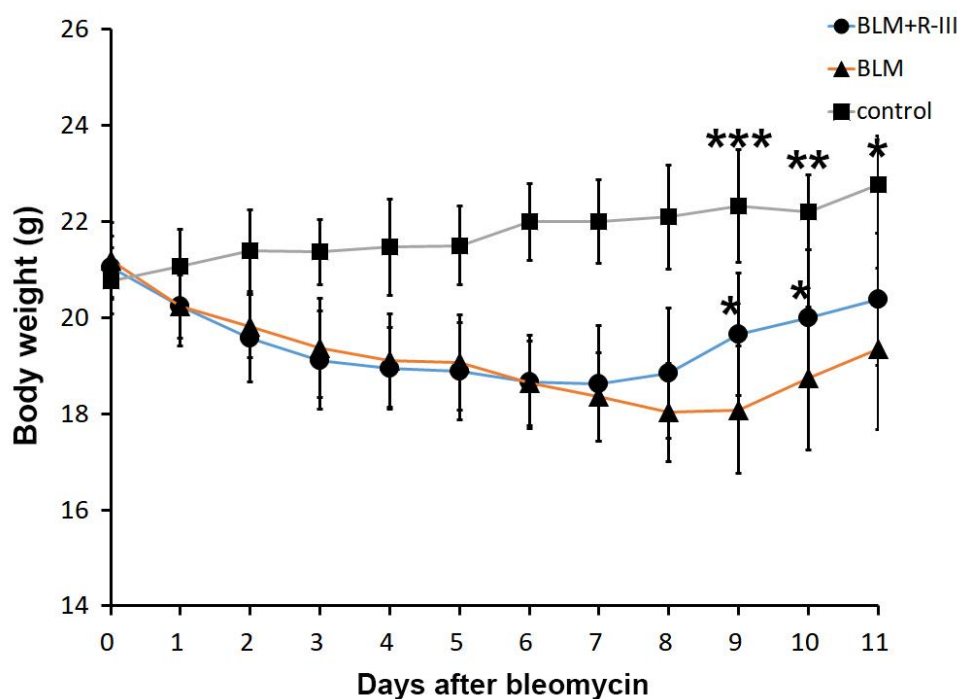


Figure S2. Body weight of control, bleomycin (BLM)-, BLM+R-III-treated mice. The body weight of the mice was monitored over a period of 11 days after bleomycin instillation and expressed as means \pm SD. * $p < 0.05$, ** $p < 0.01$, and *** $p < 0.001$ by a Welch's t-test (compared with BLM-treated mice).

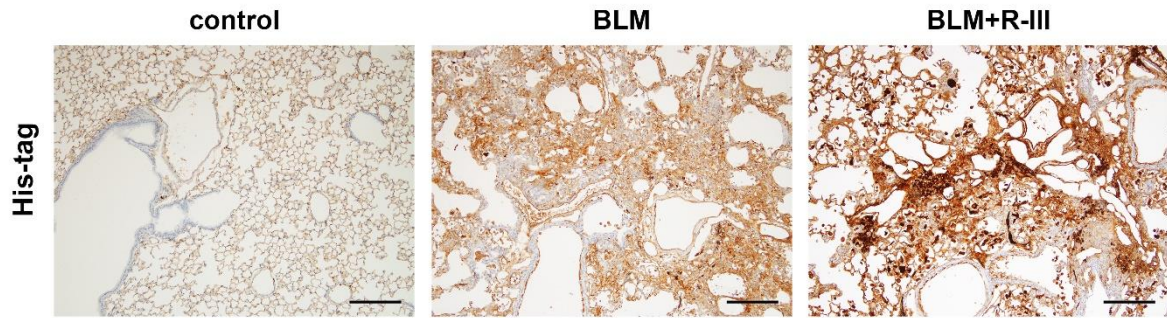


Figure S3. Cellular distribution of injected His-tagged R-III. Lung sections from control, BLM-treated, and BLM+R-III-treated mice were subjected to immunohistochemical staining for the His-tag. The His-positive signals were observed to be localized in the fibrotic foci. Scale bar, 200 μ m.