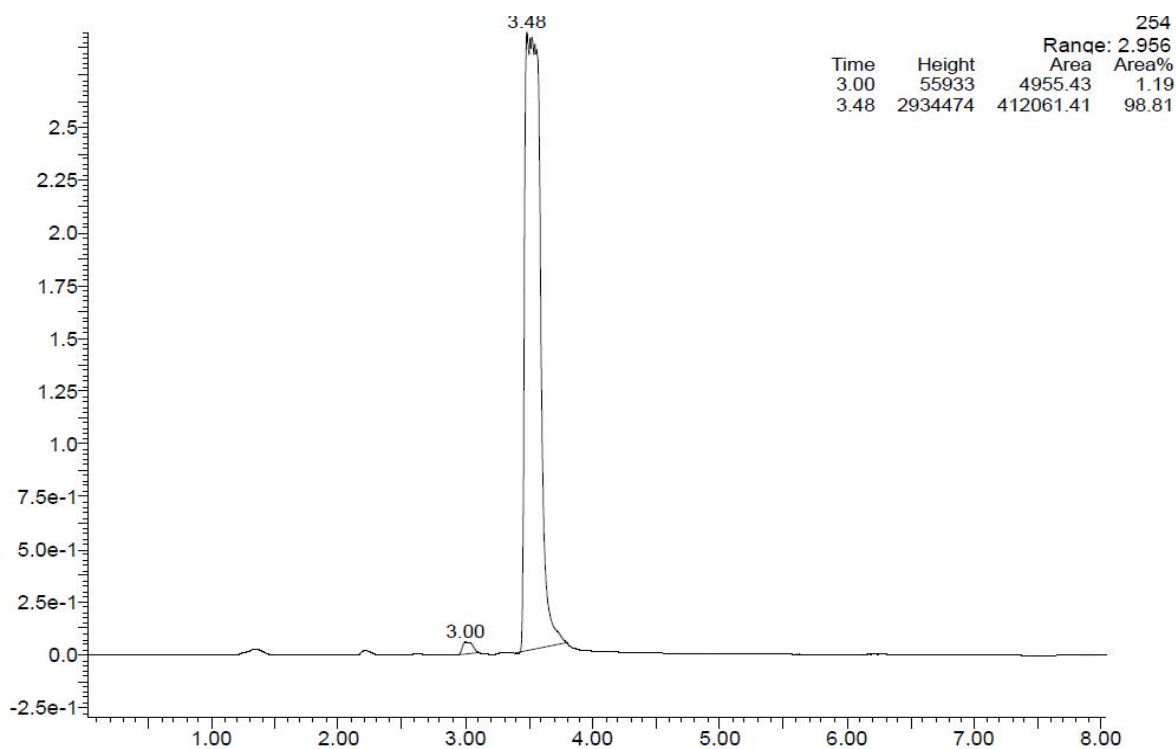


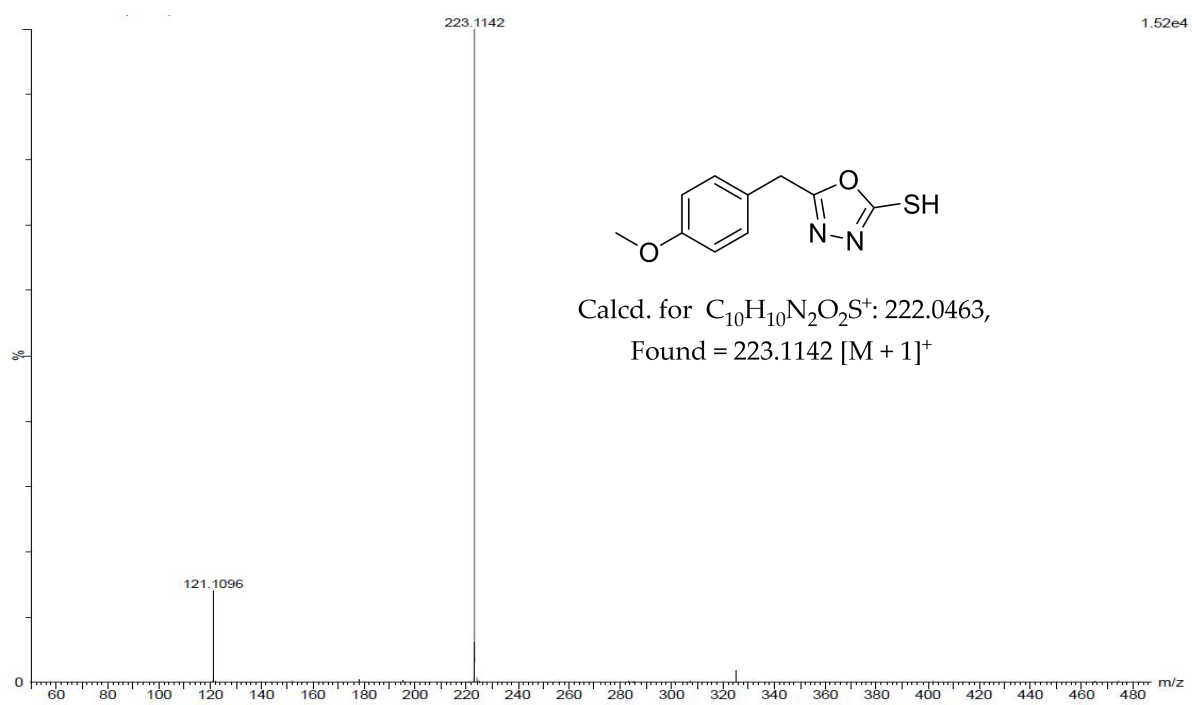
Methyl-thiol-bridged oxadiazole and triazole heterocycles as inhibitors of NF- κ B in chronic myelogenous leukemia cells

Basappa Basappa, Young Yun Jung, Akshay Ravish, Zhang Xi, Ananda Swamynayaka, Mahendra Madegowda, Vijay Pandey, Peter E. Lobie, Gautam Sethi, Kwang Seok Ahn and

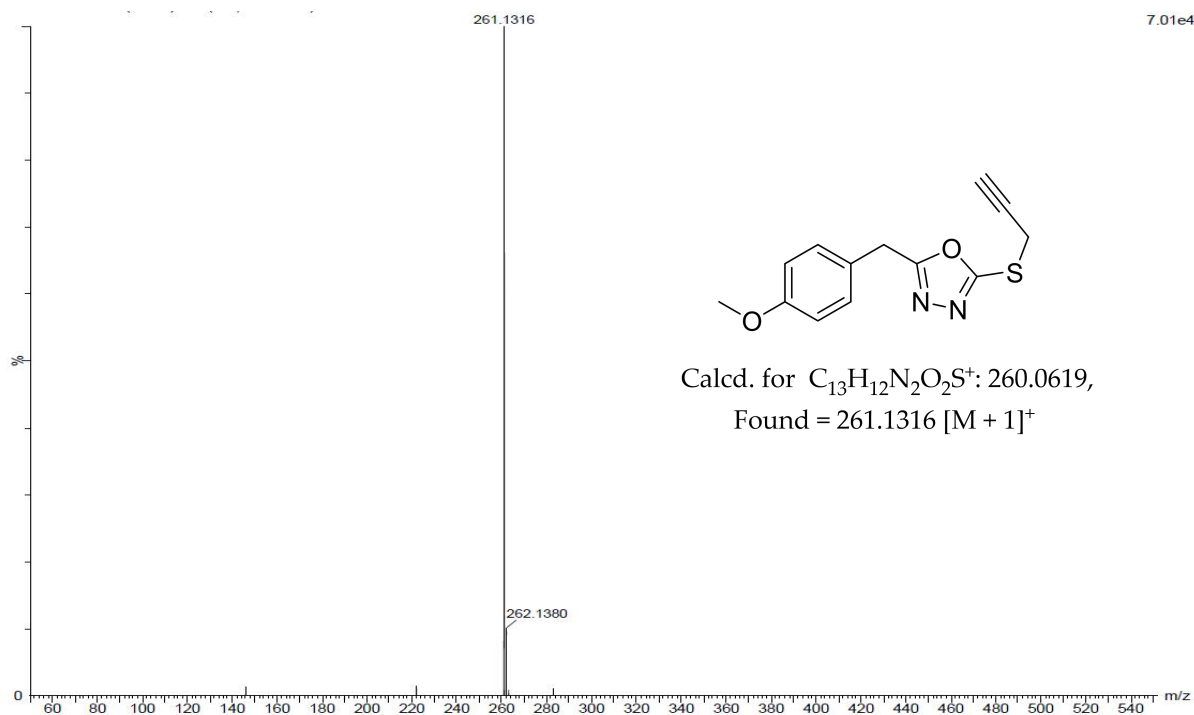
Supplementary Data



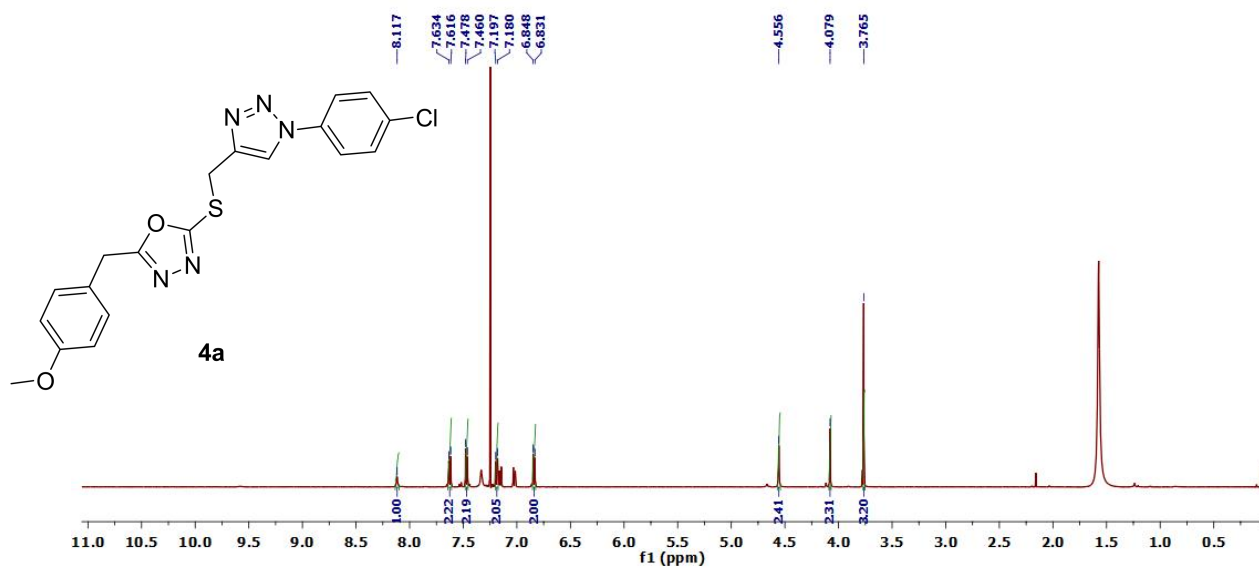
Liquid chromatogram of 2



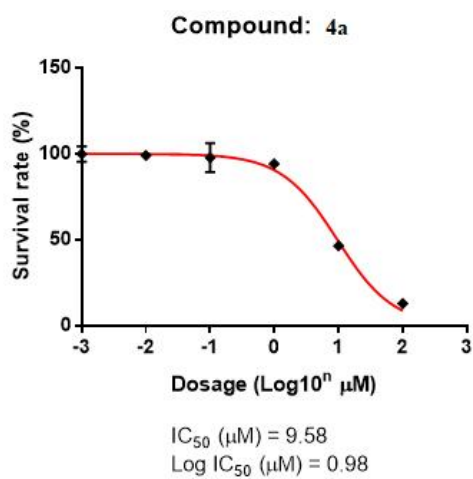
Mass spectra of 2



Mass spectra of 3



1H NMR of 4a

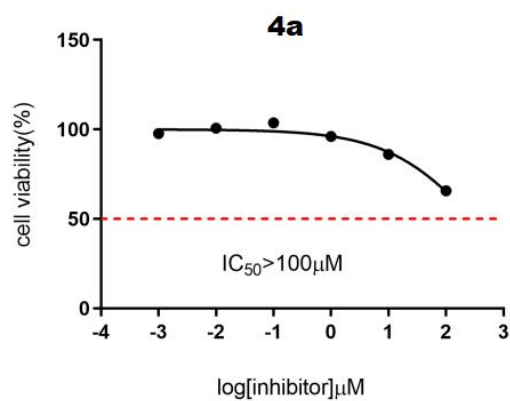


- Cell line: MCF7 (2000 cells/per well⁹⁶)
- Treated time: 72hrs
- Assay: alamarBlue (4hrs incubated)
- Data: 4a

Conc. (μM)	Viability	
	AVE.	\pm SD.
0	100.00	4.56
0.01	99.04	2.24
0.1	97.79	8.53
1	94.16	2.86
10	46.46	2.84
100	12.78	0.19

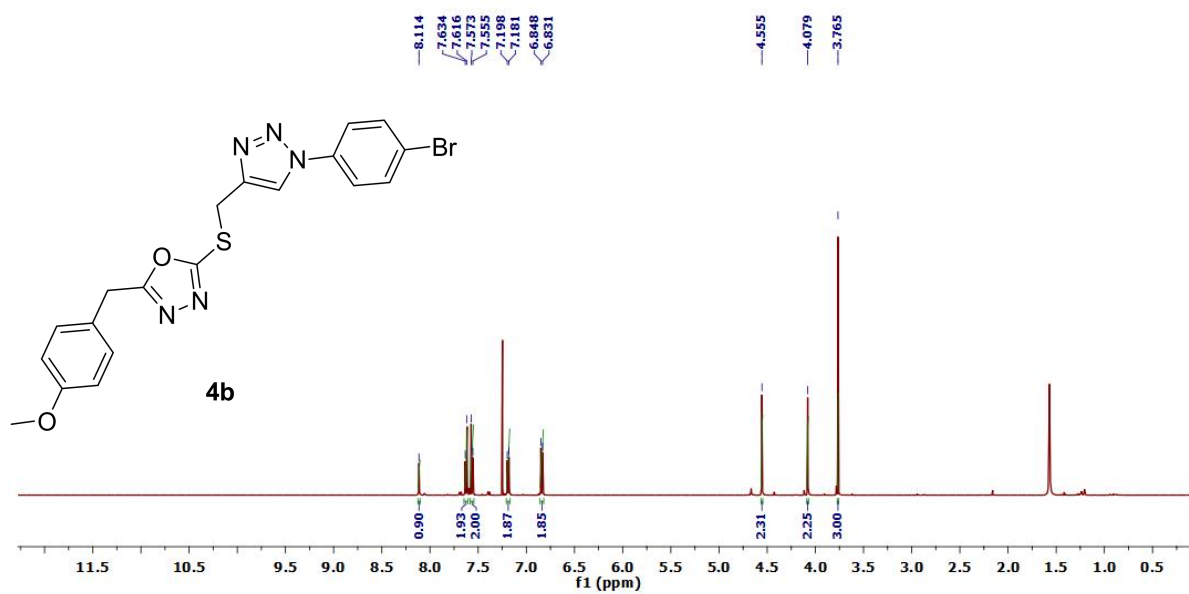
Cytotoxicity assay of **4a**

- Cell line: MCF10A(2000cells/per well|96-well plate)
- Treated time: 72hrs
- Assay: alamarBlue(4hrs incubated) N=3

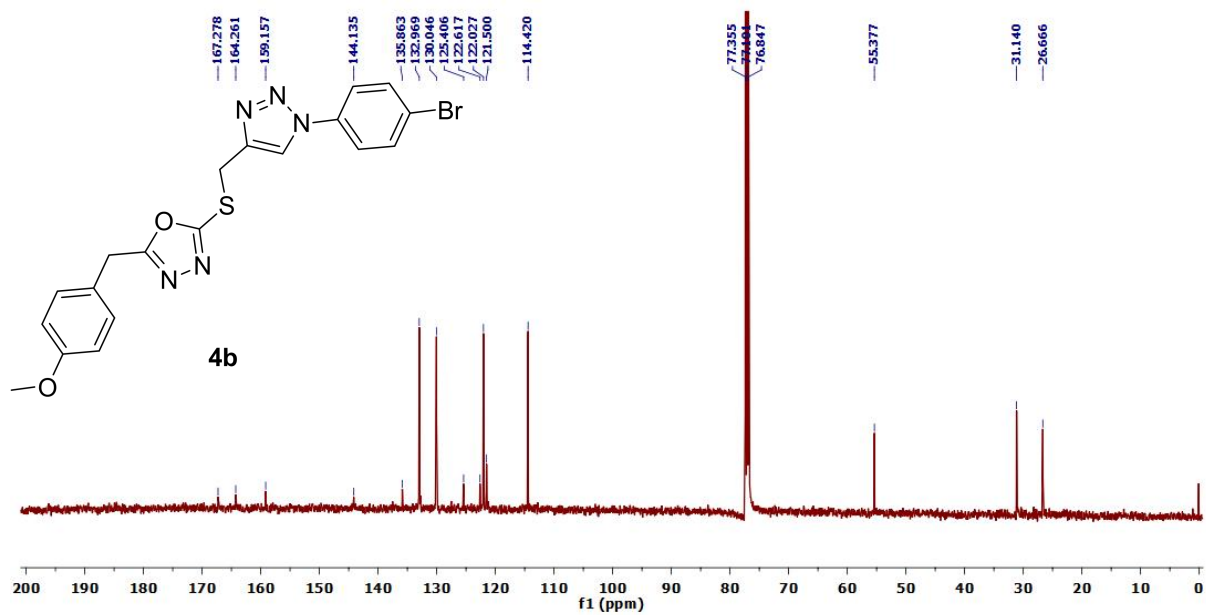


Conc.(μ M)	Viability	
	AVE.	\pm SD
0	100.00	2.52
0.01	100.67	1.15
0.1	103.67	1.53
1	96.00	1.00
10	86.00	2.65
100	65.67	1.53

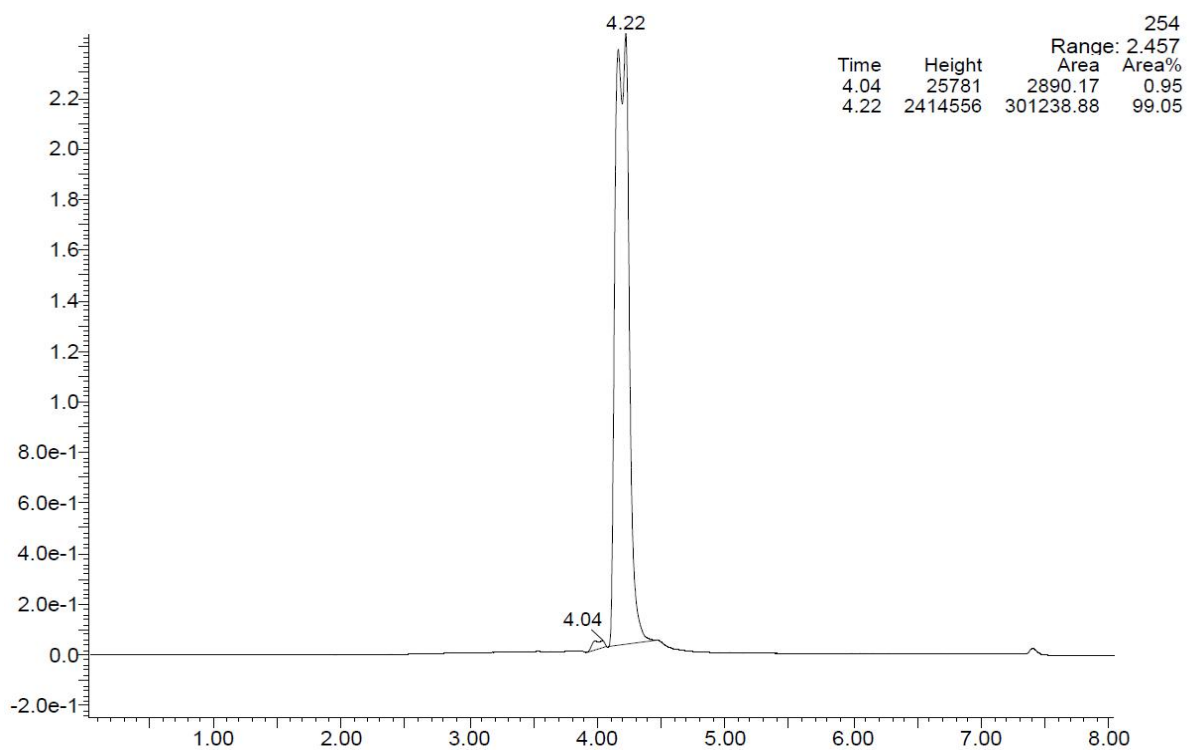
Cytotoxicity assay for the compound **4a**



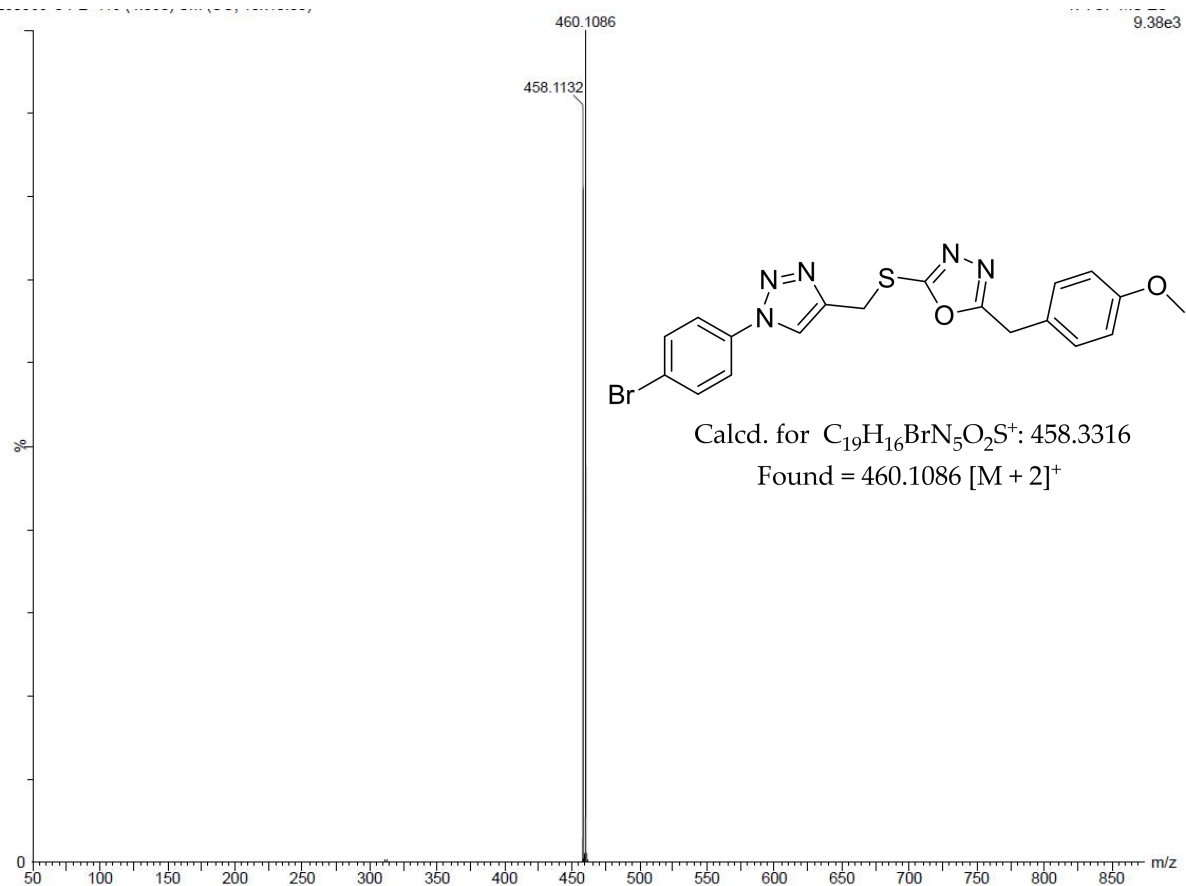
1H NMR of **4b**



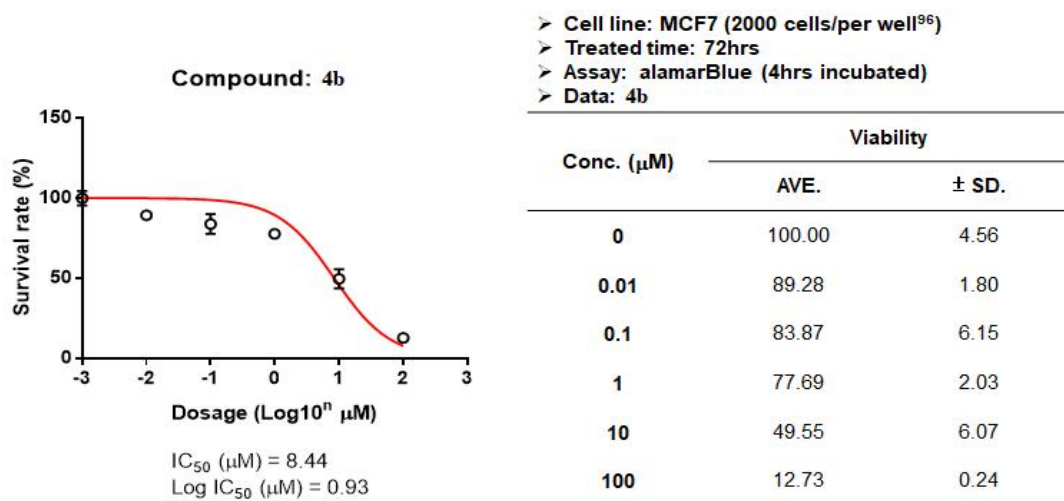
¹³C NMR of **4b**



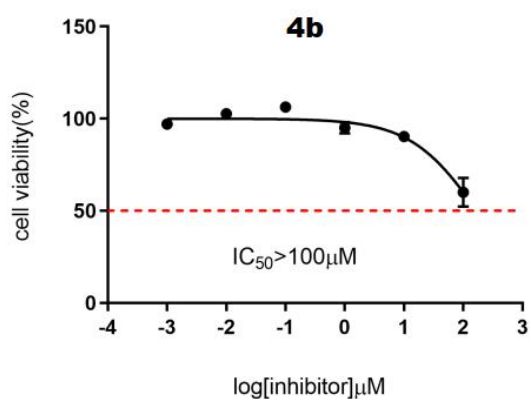
Liquid chromatogram of **4b**



Mass spectra of **4b**

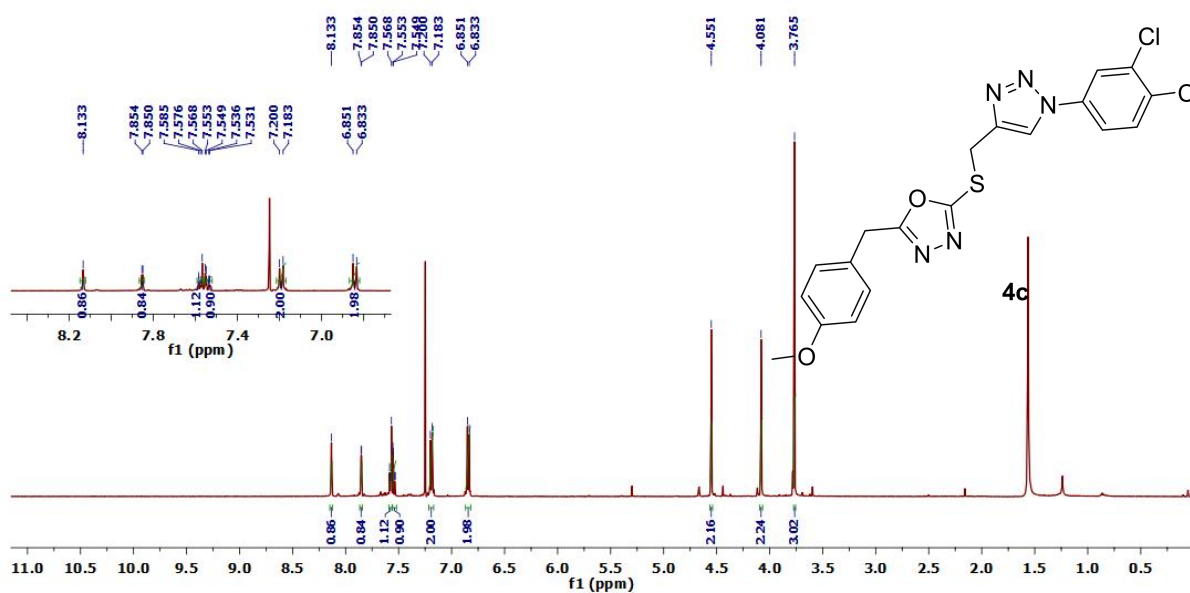


Cytotoxicity assay of **4b**

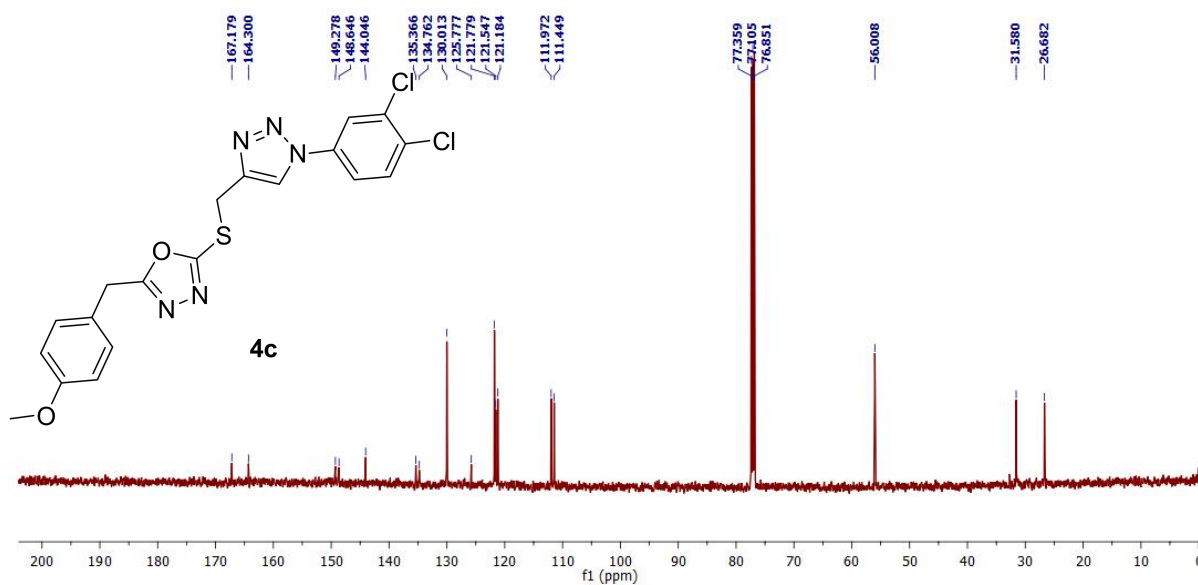


Conc.(μM)	Viability	
	AVE.	±SD
0	100.00	1.73
0.01	102.67	1.15
0.1	106.33	2.31
1	95.00	3.00
10	90.33	0.58
100	60.00	7.81

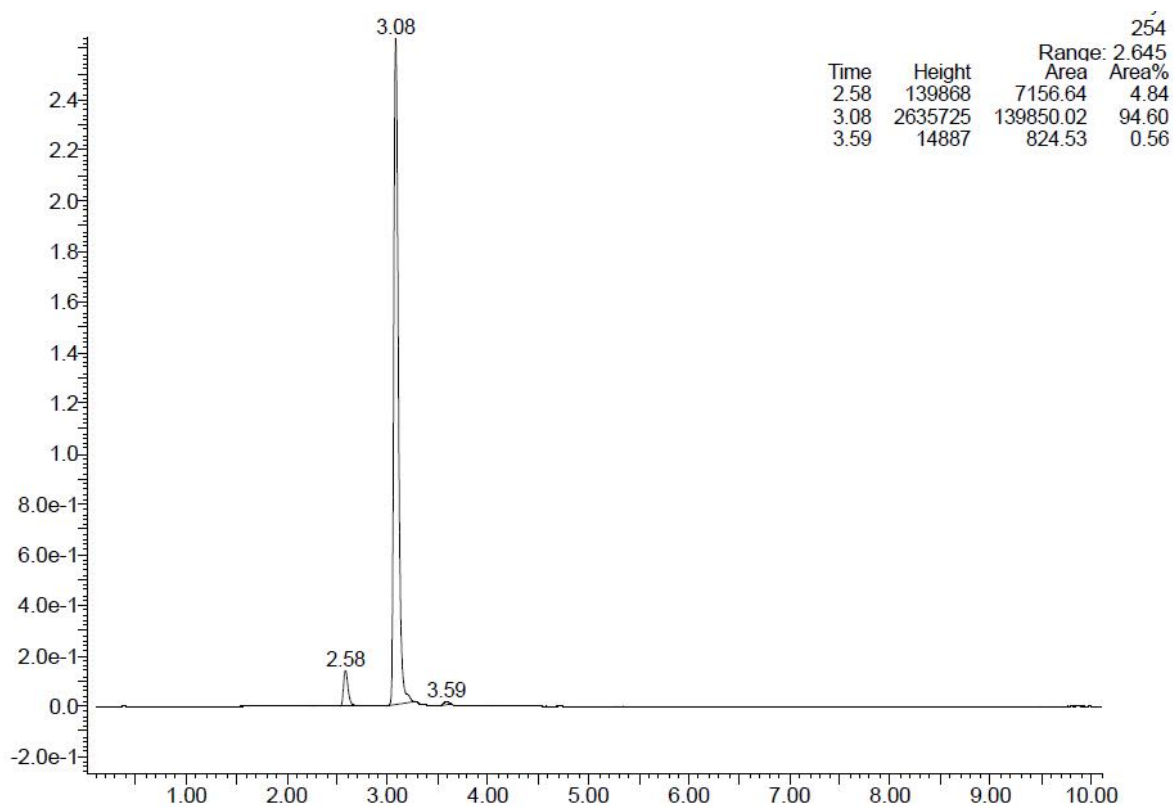
Cytotoxicity assay for the compound **4b** (MCF-10A)



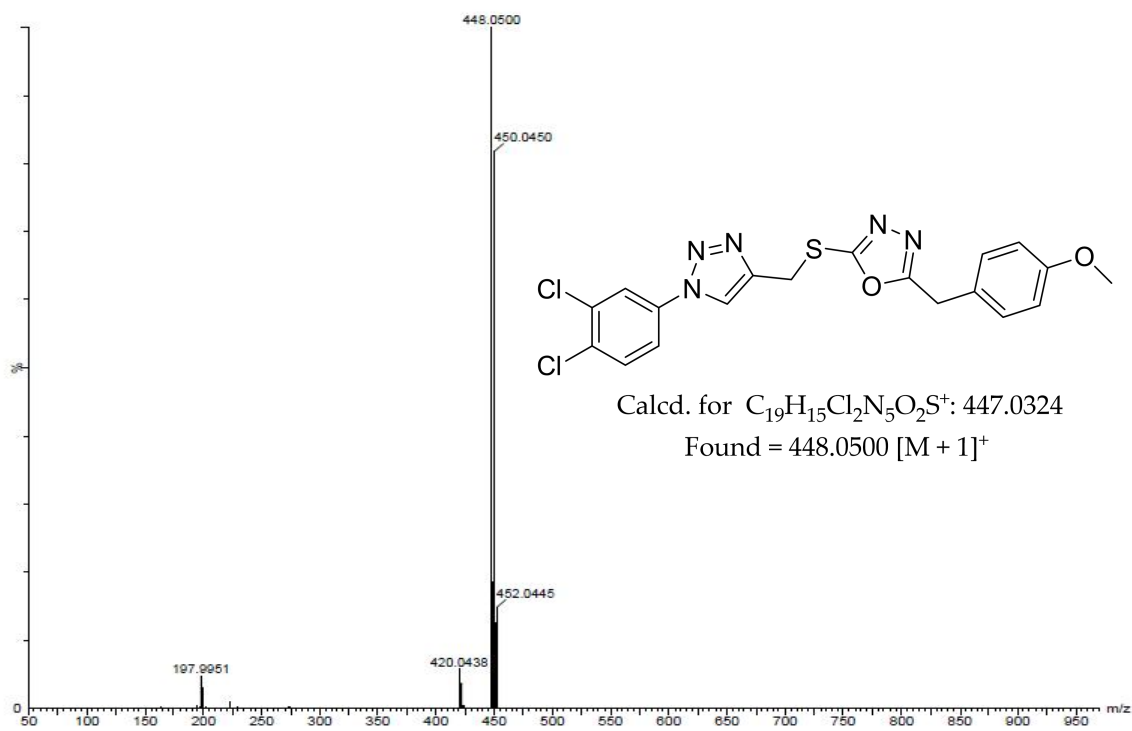
¹H NMR of **4c**



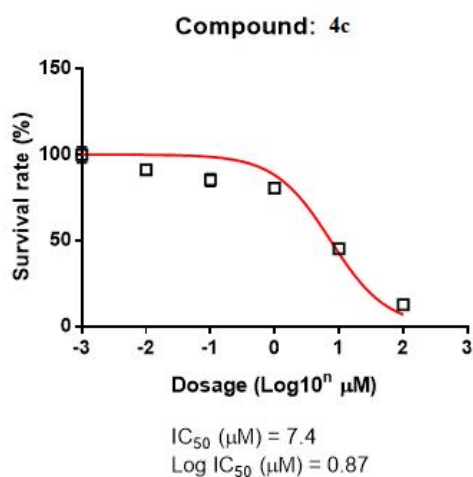
¹³C NMR of **4c**



Liquid chromatogram of **4c**



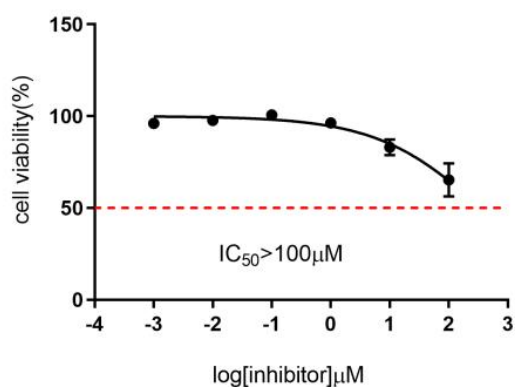
Mass spectra of **4c**



- Cell line: MCF7 (2000 cells/per well⁹⁶)
- Treated time: 72hrs
- Assay: alamarBlue (4hrs incubated)
- Data: 4c

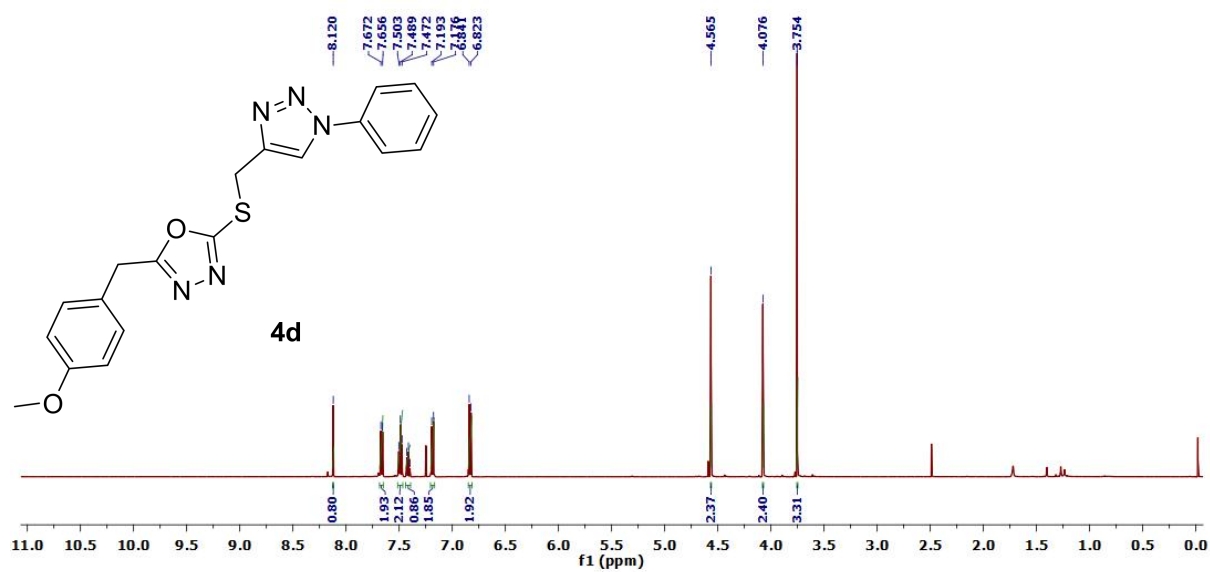
Conc. (μM)	Viability	
	AVE.	\pm SD.
0	100.00	4.56
0.01	91.20	2.49
0.1	85.17	3.49
1	80.40	2.80
10	45.19	1.37
100	12.54	0.18

Cytotoxicity assay of 4c

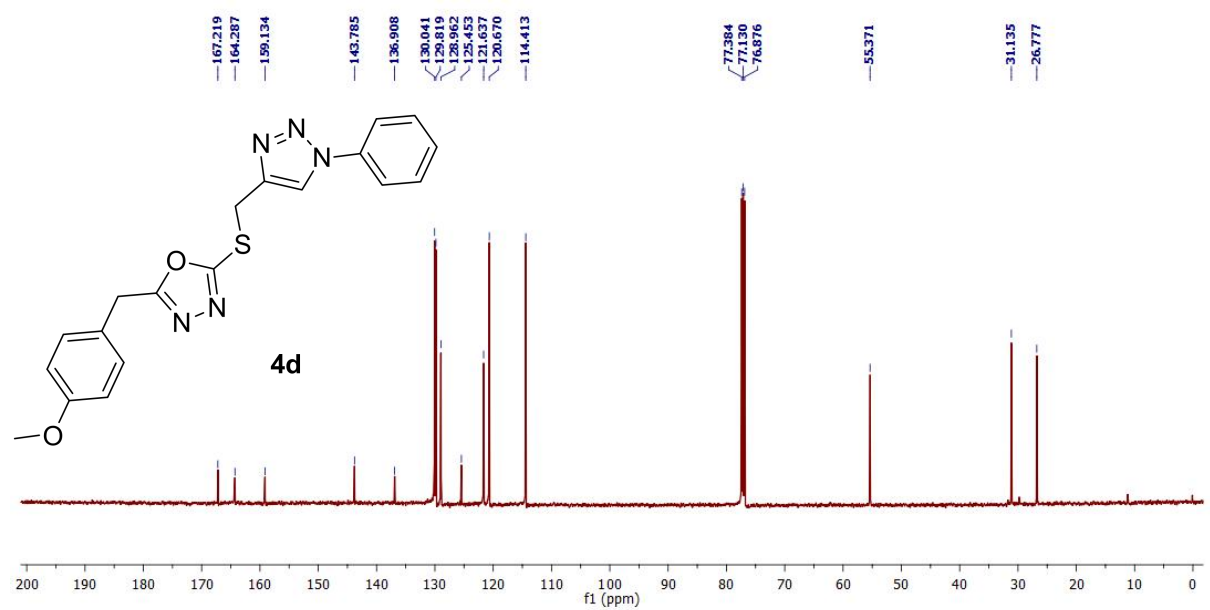


Conc.(μM)	Viability	
	AVE.	\pm SD
0	100.00	1.73
0.01	97.67	2.52
0.1	100.67	2.52
1	96.33	1.53
10	83.00	4.36
100	65.33	9.02

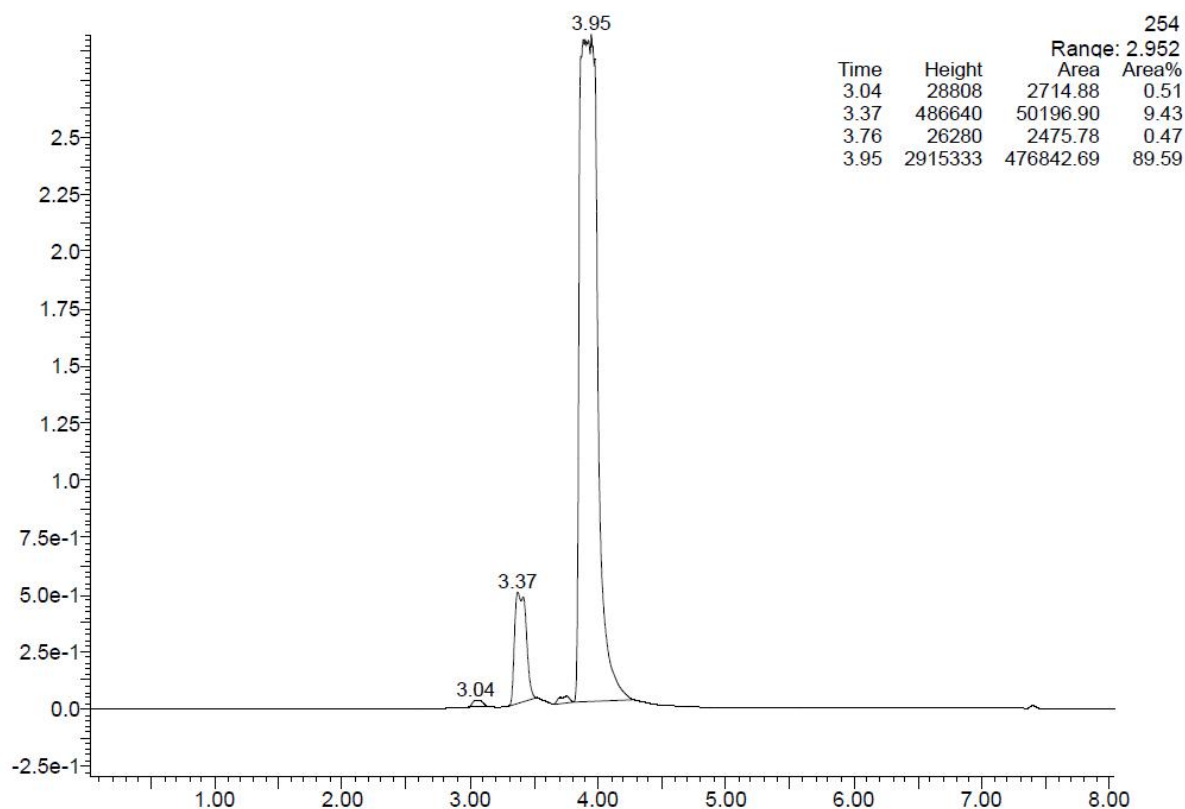
Cytotoxicity assay for the compound 4c (MCF-10A)



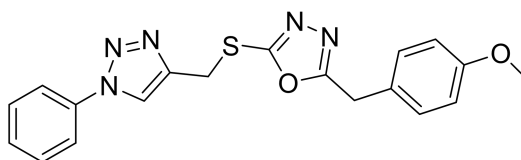
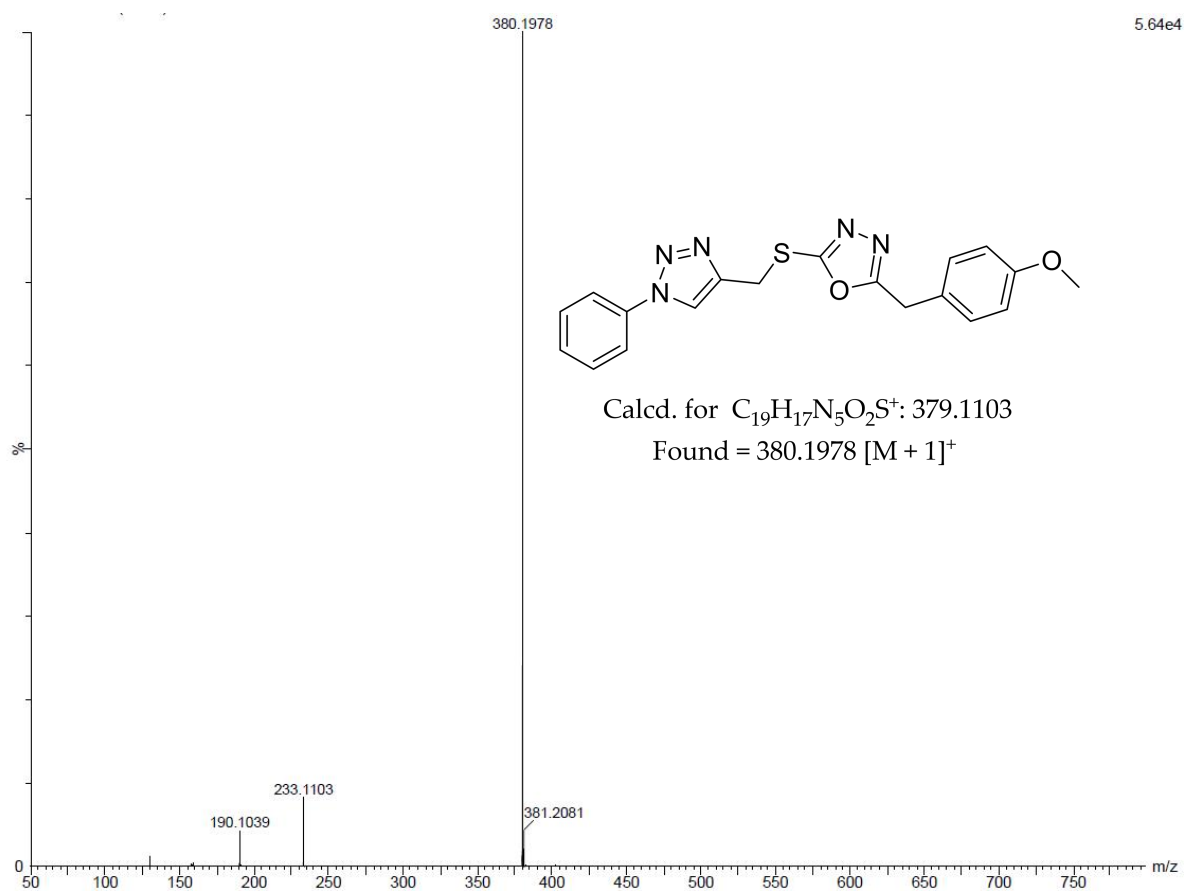
¹H NMR of **4d**



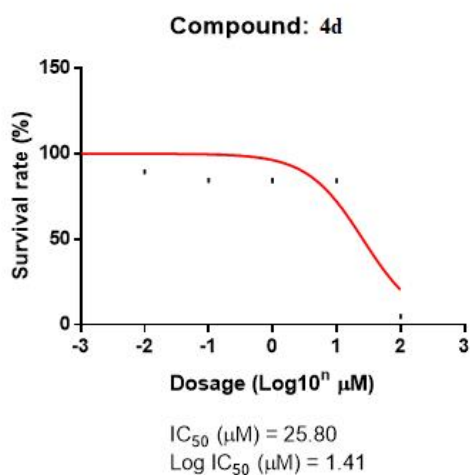
¹³C NMR of **4d**



Liquid chromatogram of **4d**



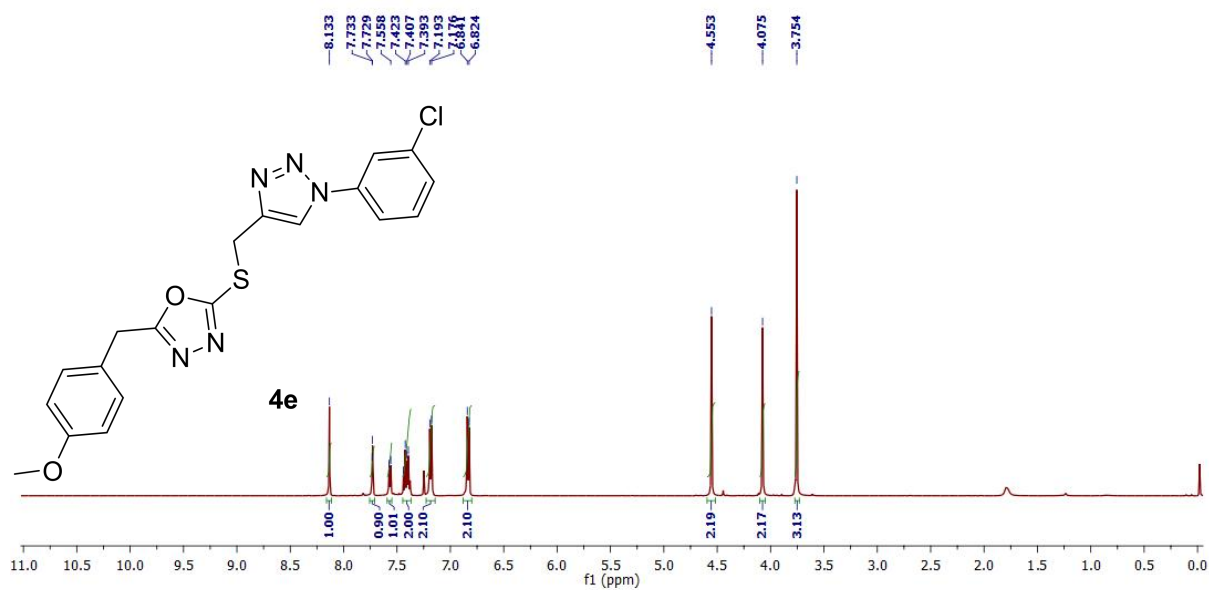
Mass spectra of 4d



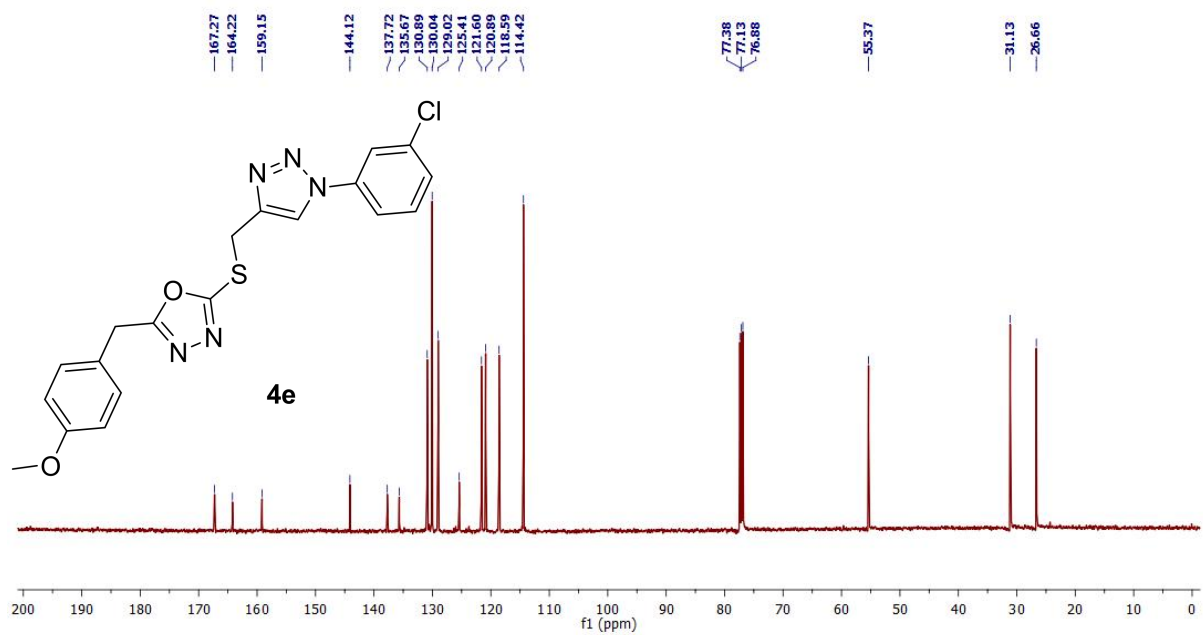
- Cell line: MCF7 (2000 cells/per well⁹⁶)
- Treated time: 72hrs
- Assay: alamarBlue (4hrs incubated)
- Data: 4d

Conc. (μM)	Viability	
	AVE.	\pm SD.
0	100.00	1.75
0.01	90.90	1.08
0.1	85.88	2.97
1	85.87	1.98
10	85.74	2.98
100	6.28	0.02

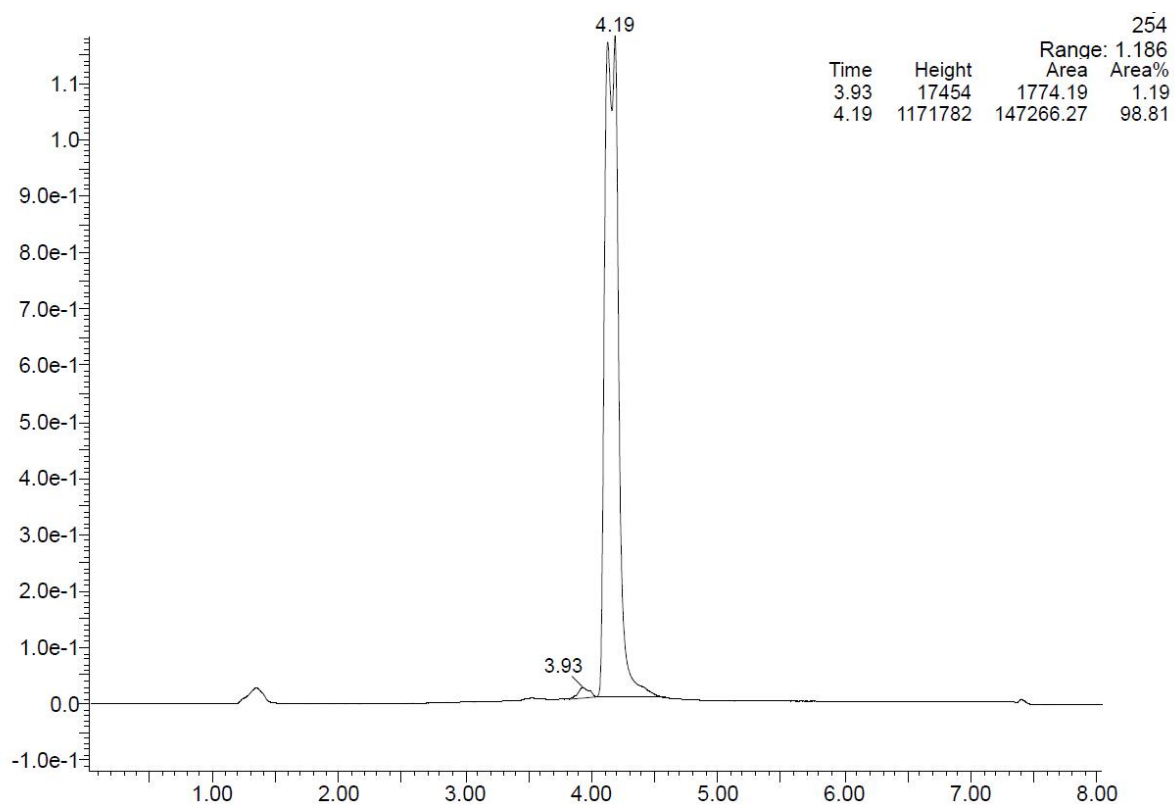
Cytotoxicity assay of 4d



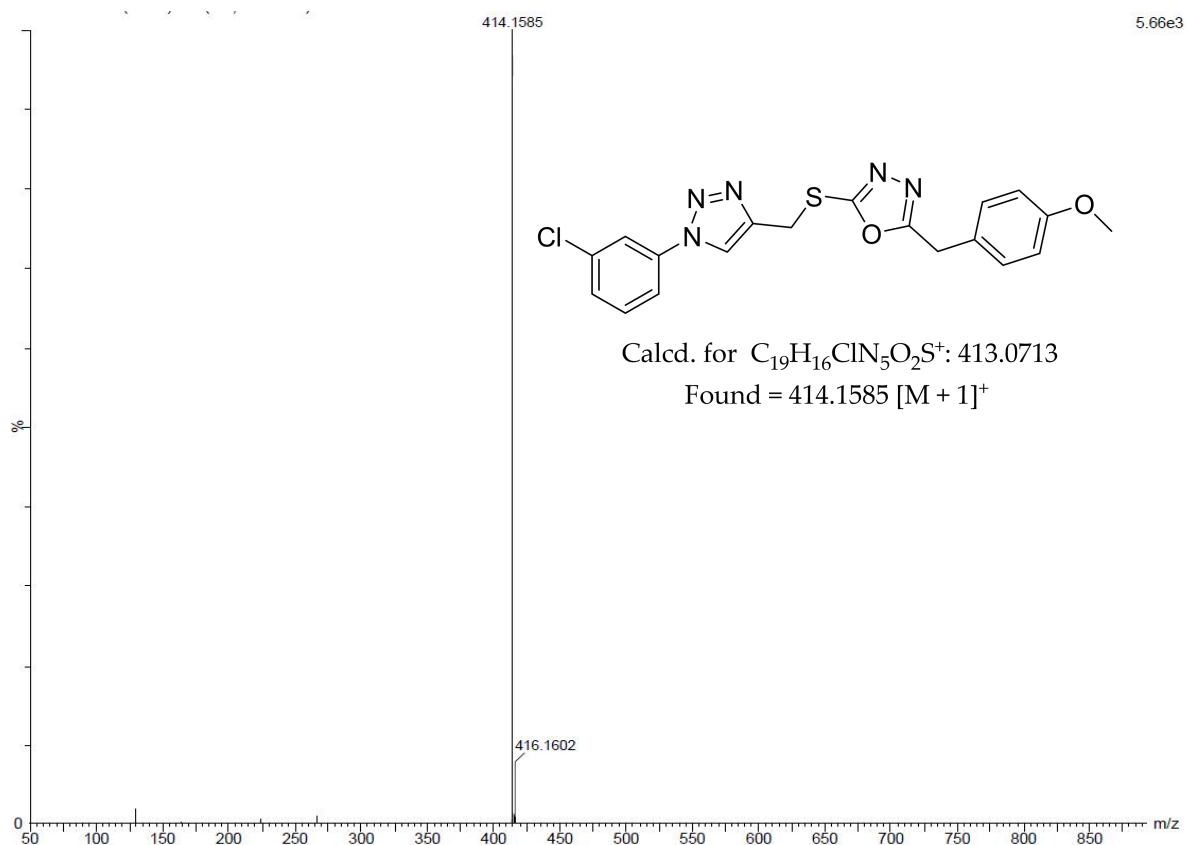
^1H NMR of 4e



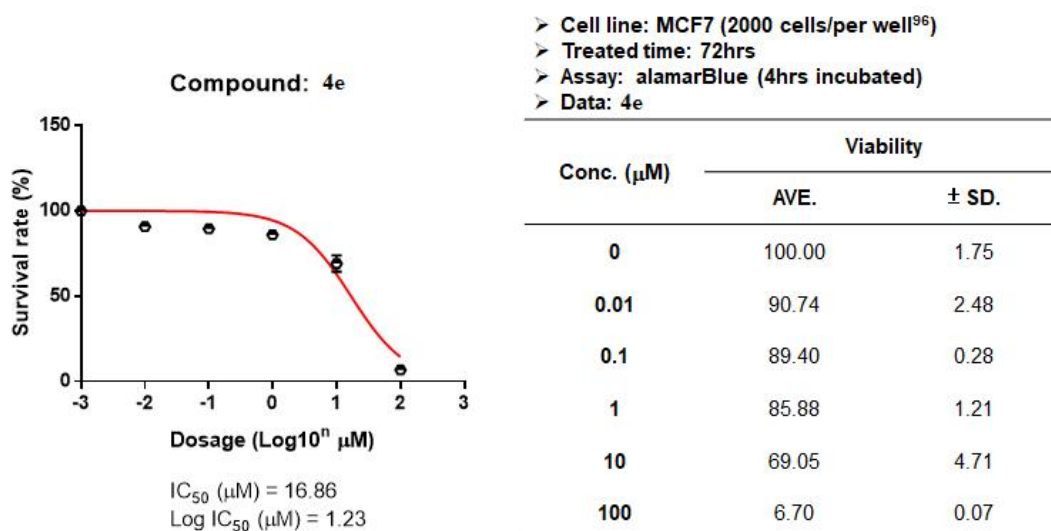
¹³C NMR of **4e**



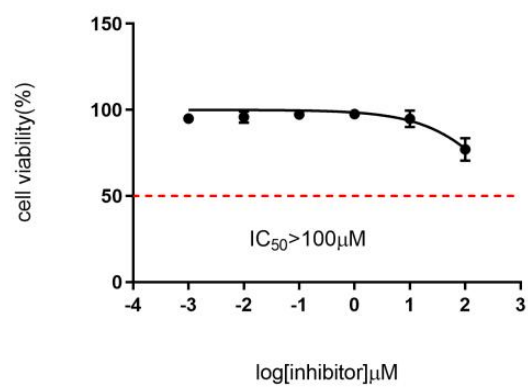
Liquid chromatogram of 4e



Mass spectra of 4e

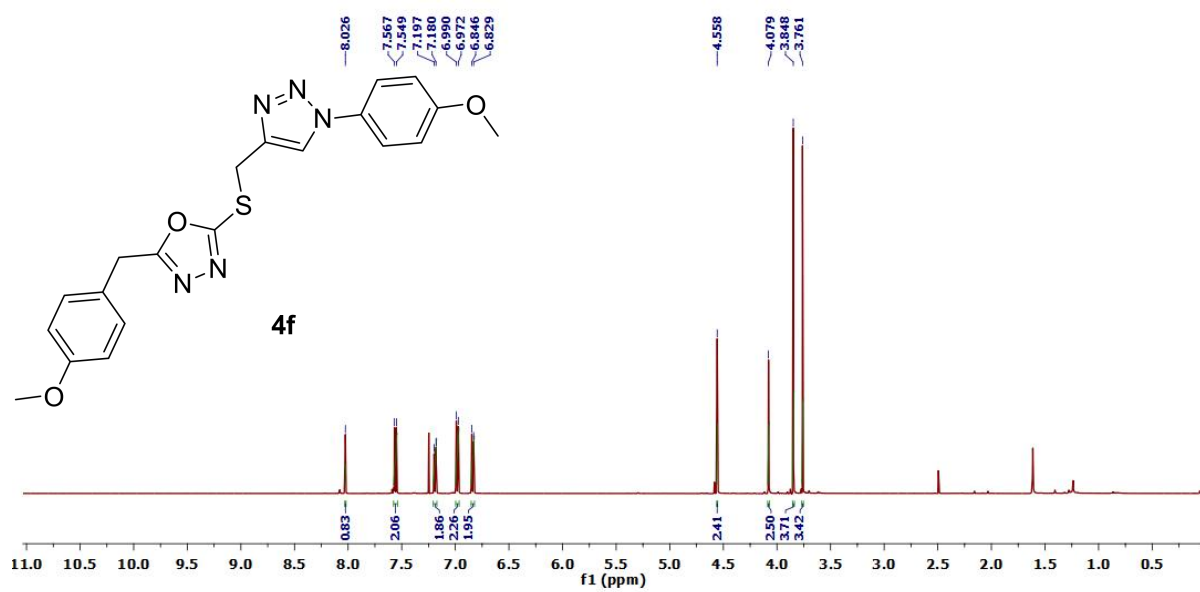


Cytotoxicity assay of 4e

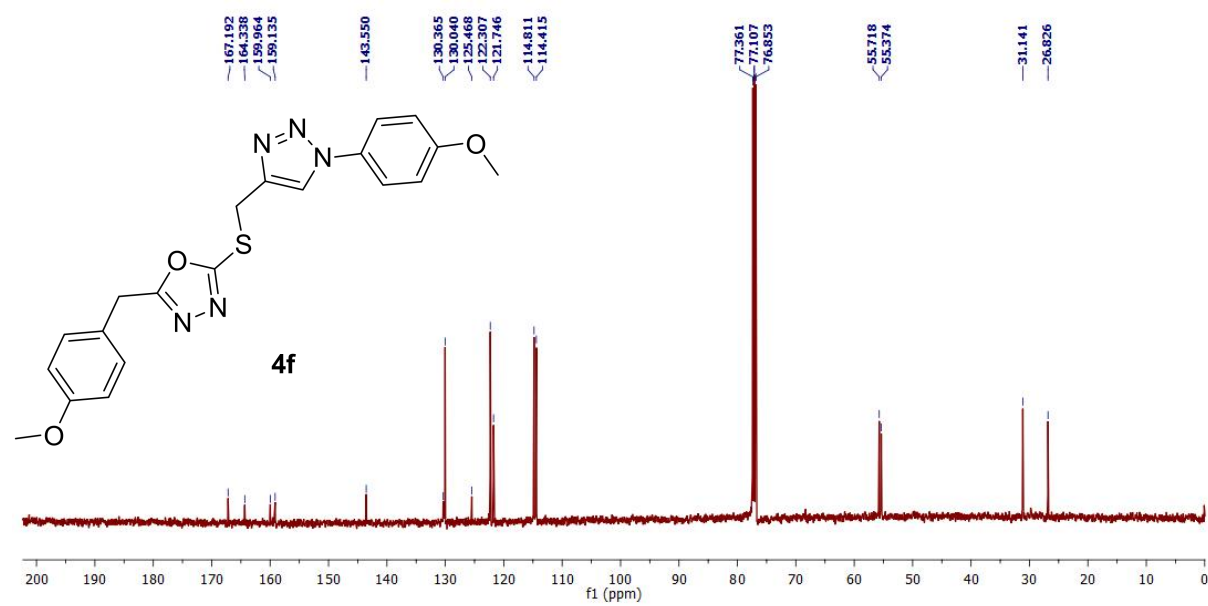


Conc.(μ M)	Viability	
	AVE.	\pm SD
0	100.00	2.76
0.01	95.80	3.21
0.1	97.33	1.15
1	97.50	2.29
10	94.87	4.86
100	77.10	6.59

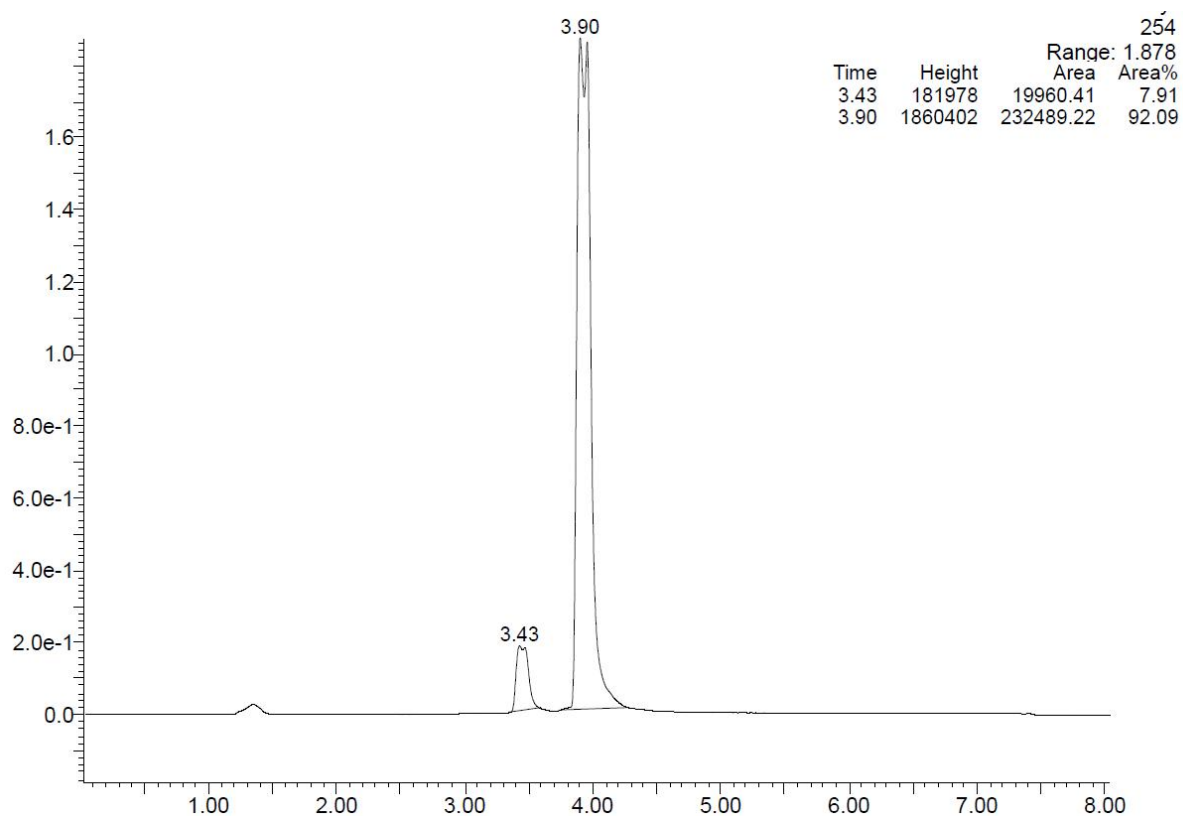
Cytotoxicity data for the compound 4e



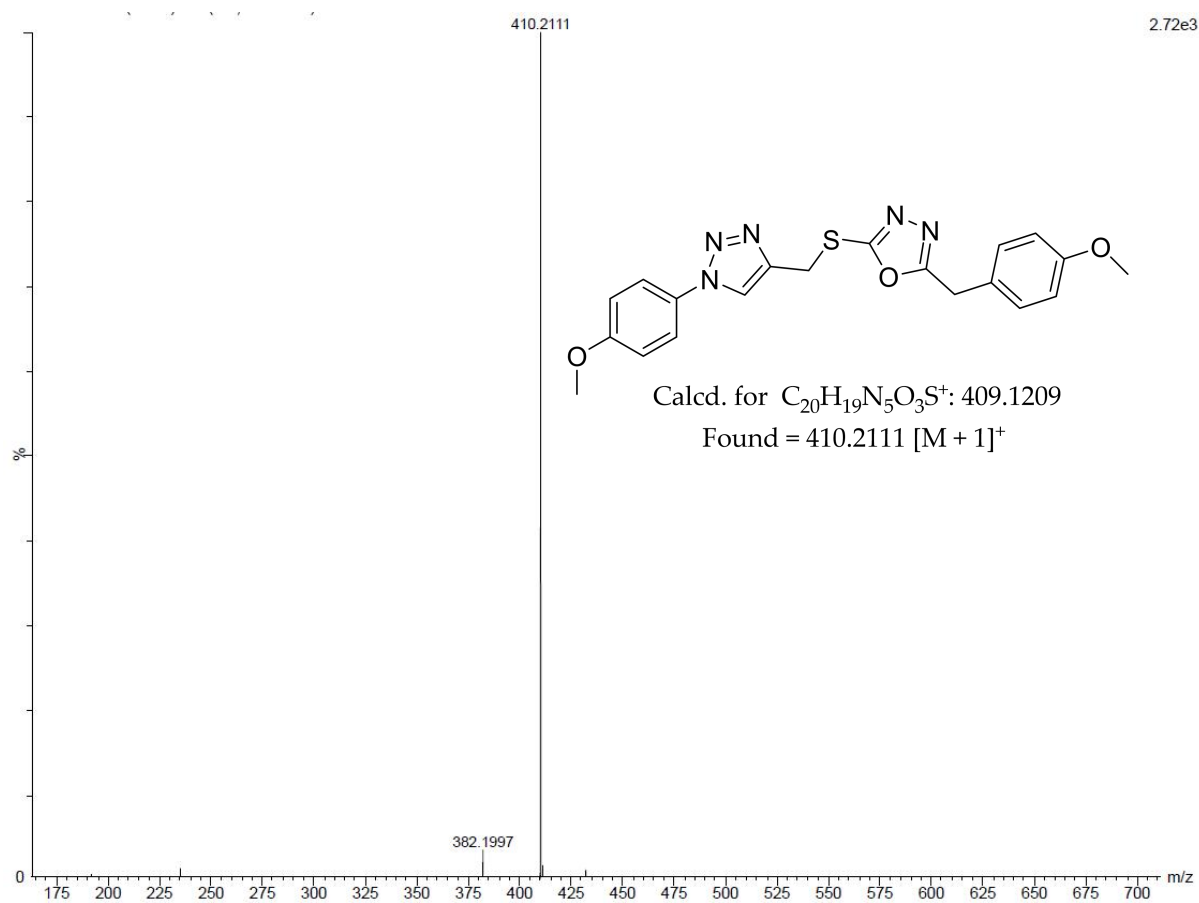
¹H NMR of 4f



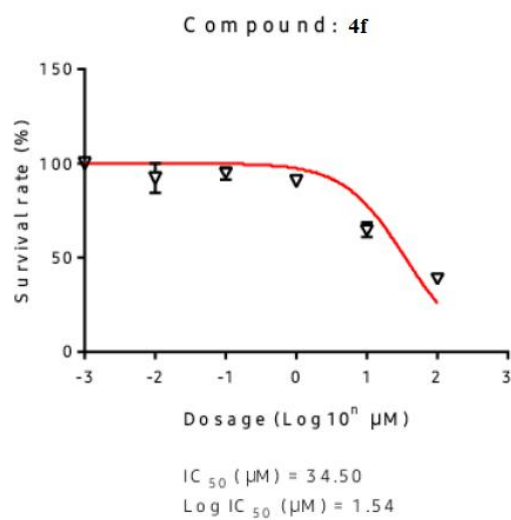
¹³C NMR of 4f



Liquid chromatogram of **4f**



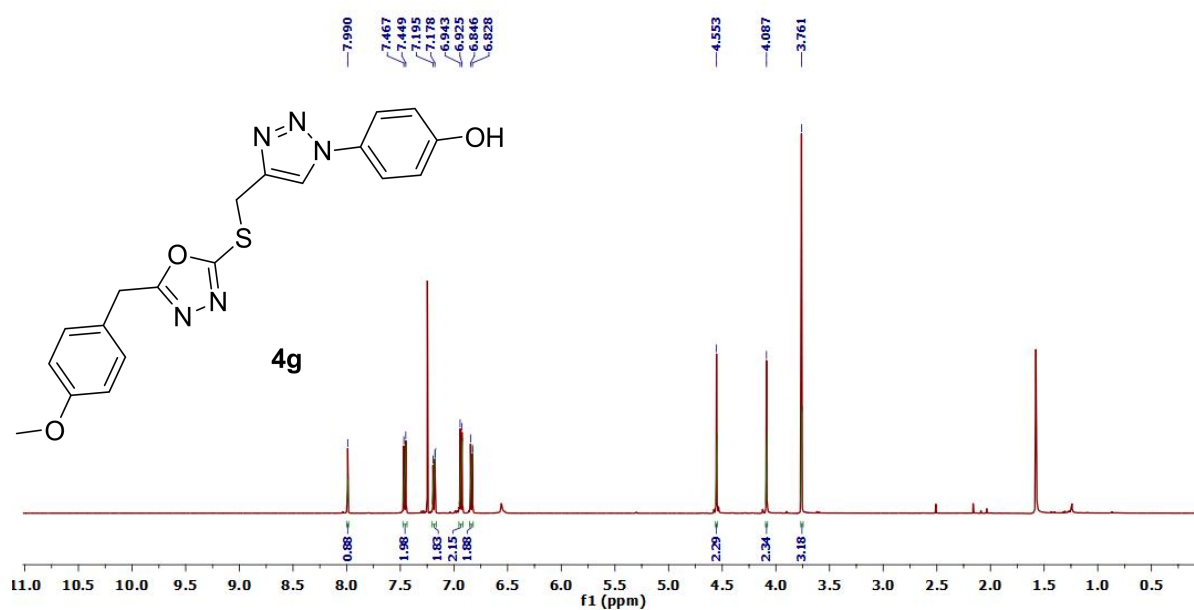
Mass spectra of 4f



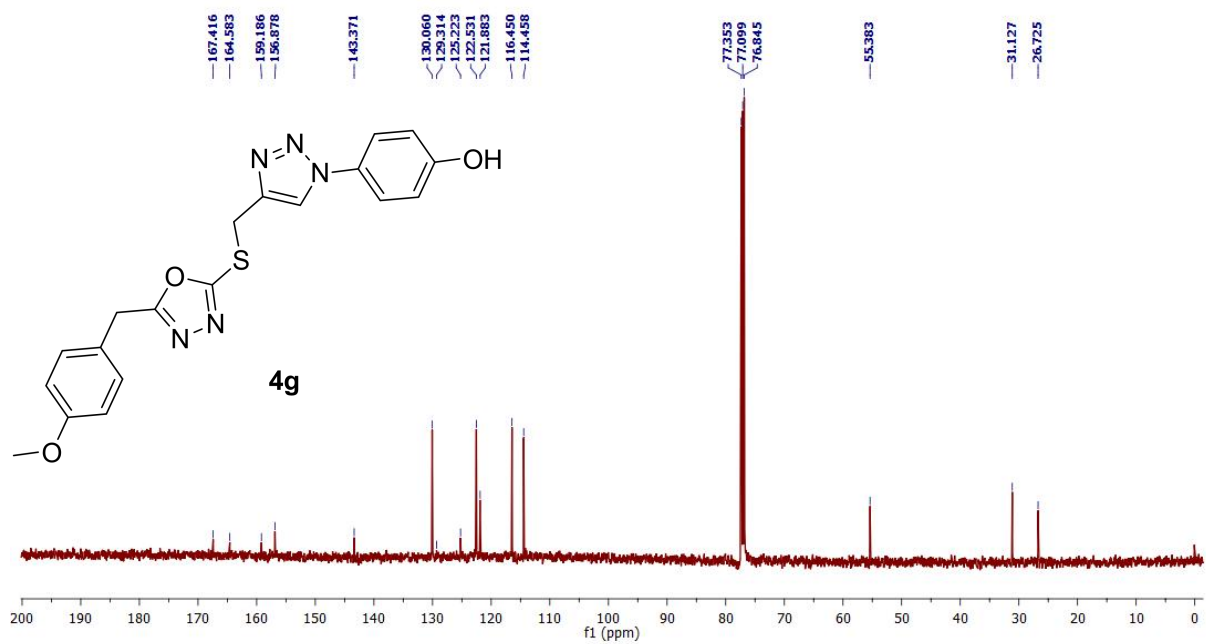
- Cell line: MCF-7 (2000 cells/per well⁹⁶-well plate)
- Treated time: 72hrs
- Assay: alamarBlue (4hrs incubated)
- Data: 4f

Conc. (μM)	Viability	
	AVE.	\pm SD.
0	100.00	2.45
0.01	91.99	7.77
0.1	94.69	3.12
1	90.48	1.89
10	64.48	4.02
100	38.62	2.45

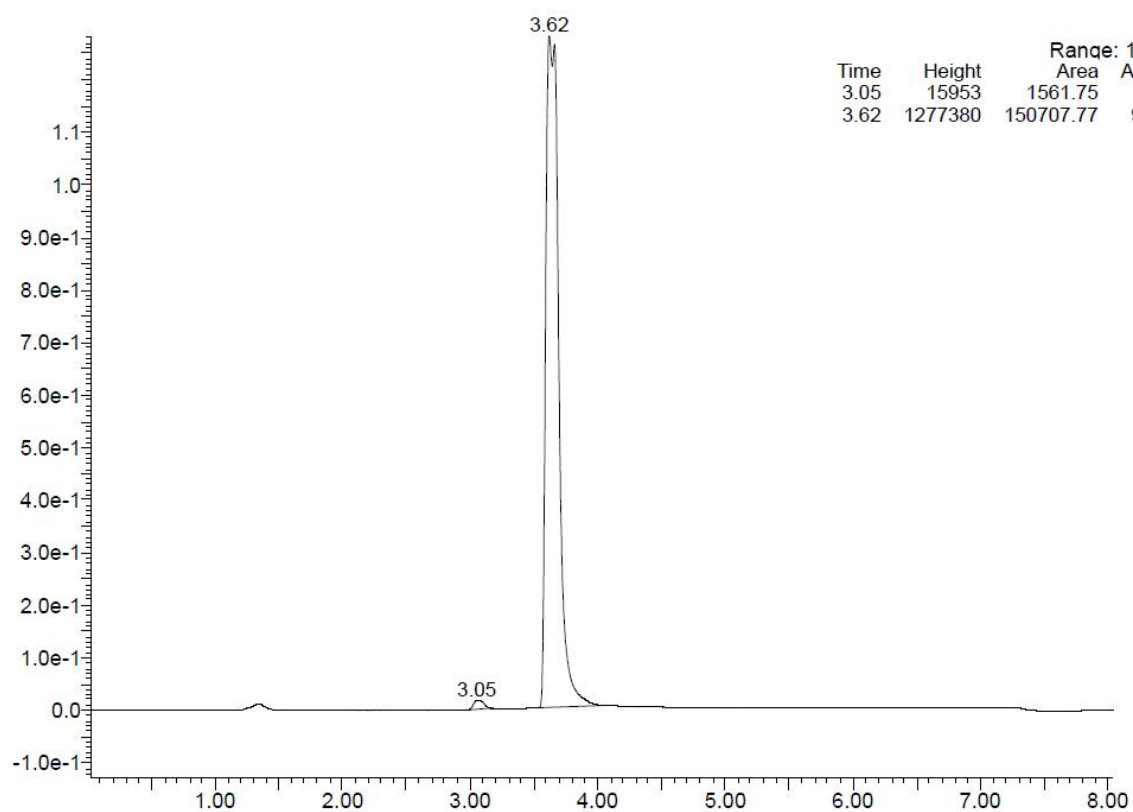
Cytotoxicity assay of 4f



^1H NMR of 4g

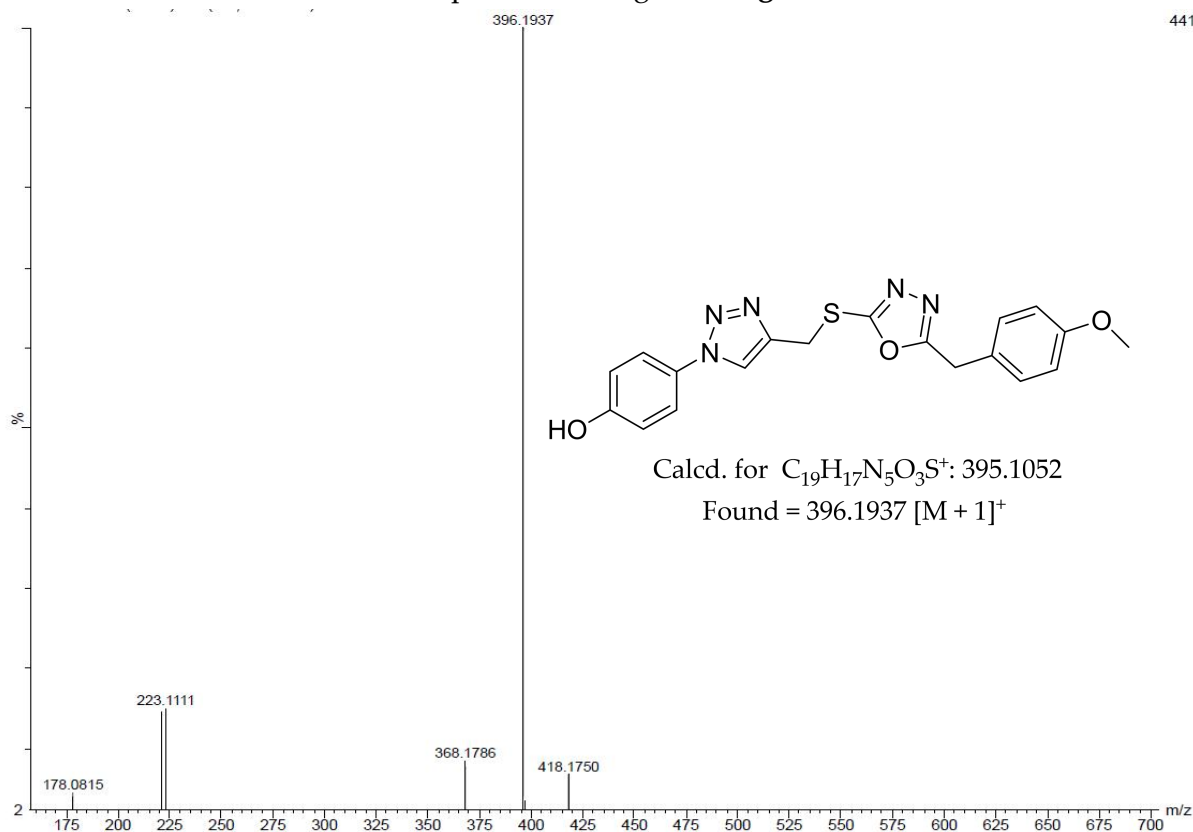


¹³C NMR of **4g**

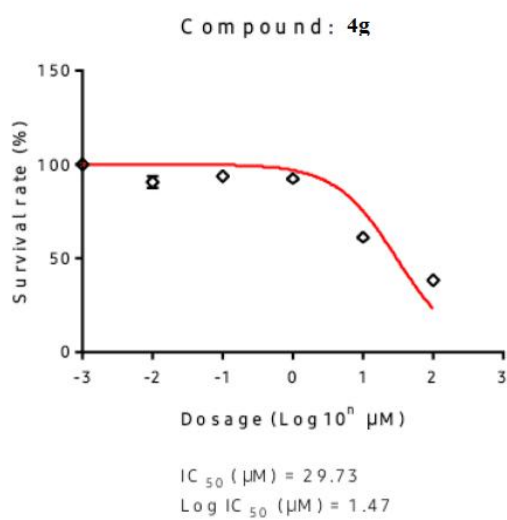


Liquid chromatogram of 4g

441



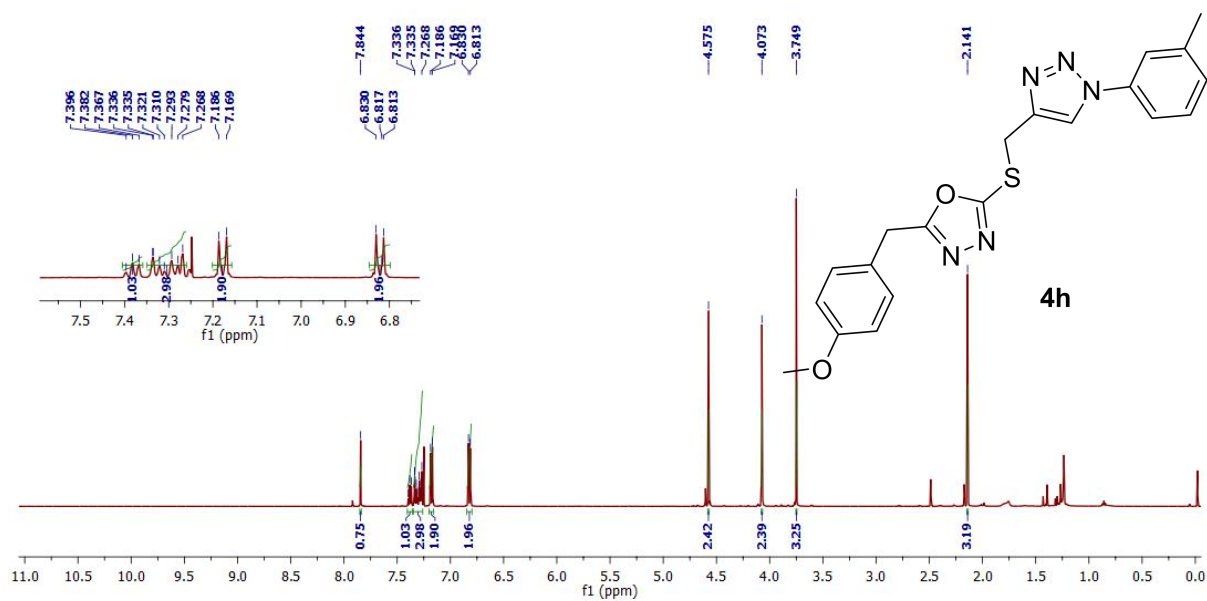
Mass spectra of 4g



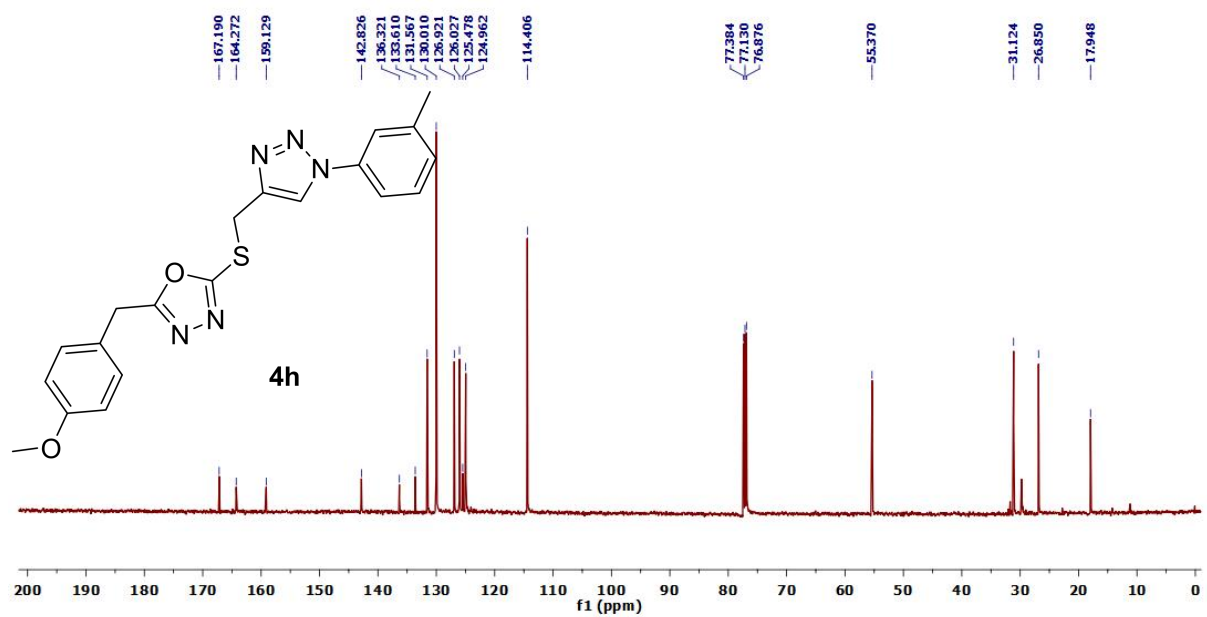
- Cell line: MCF-7 (2000 cells/per well⁹⁶-well plate)
- Treated time: 72hrs
- Assay: alamarBlue (4hrs incubated)
- Data: 4g

Conc. (μM)	Viability	
	AVE.	\pm SD.
0	100.00	2.45
0.01	90.38	3.38
0.1	93.43	0.64
1	92.40	2.29
10	61.24	1.19
100	38.32	1.29

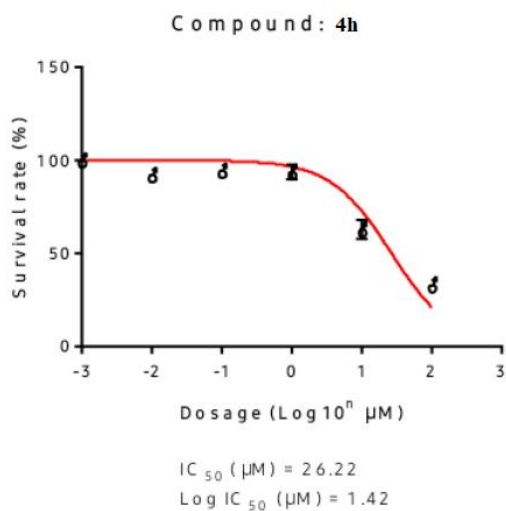
Cytotoxicity assay of 4g



¹H NMR of 4h



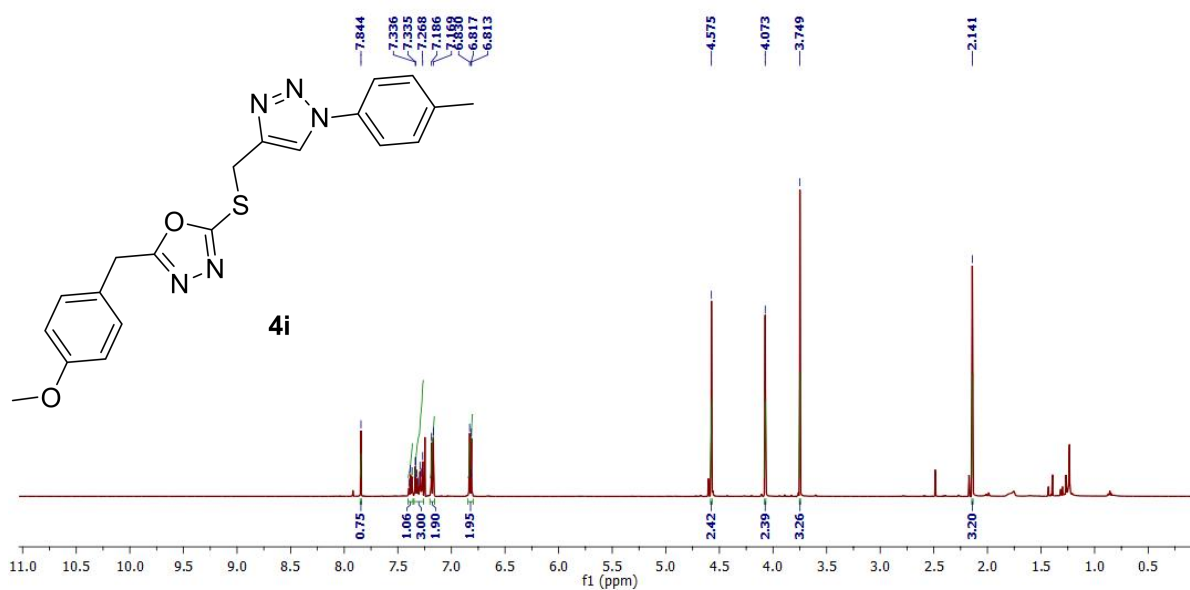
¹³C NMR of 4h



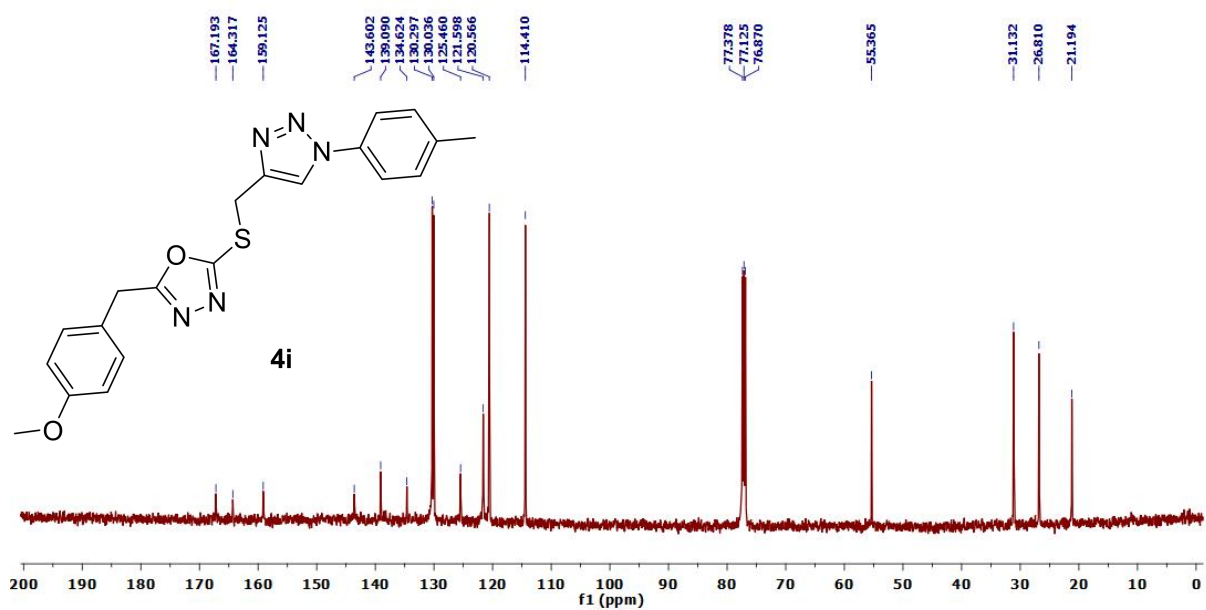
- Cell line: MCF-7 (2000 cells/per well⁹⁶-well plate)
- Treated time: 72hrs
- Assay: alamarBlue (4hrs incubated)
- Data: **4h**

Conc. (μM)	Viability	
	AVE.	\pm SD.
0	100.00	0.89
0.01	92.00	1.86
0.1	94.38	1.70
1	93.81	4.02
10	62.82	4.93
100	33.08	1.38

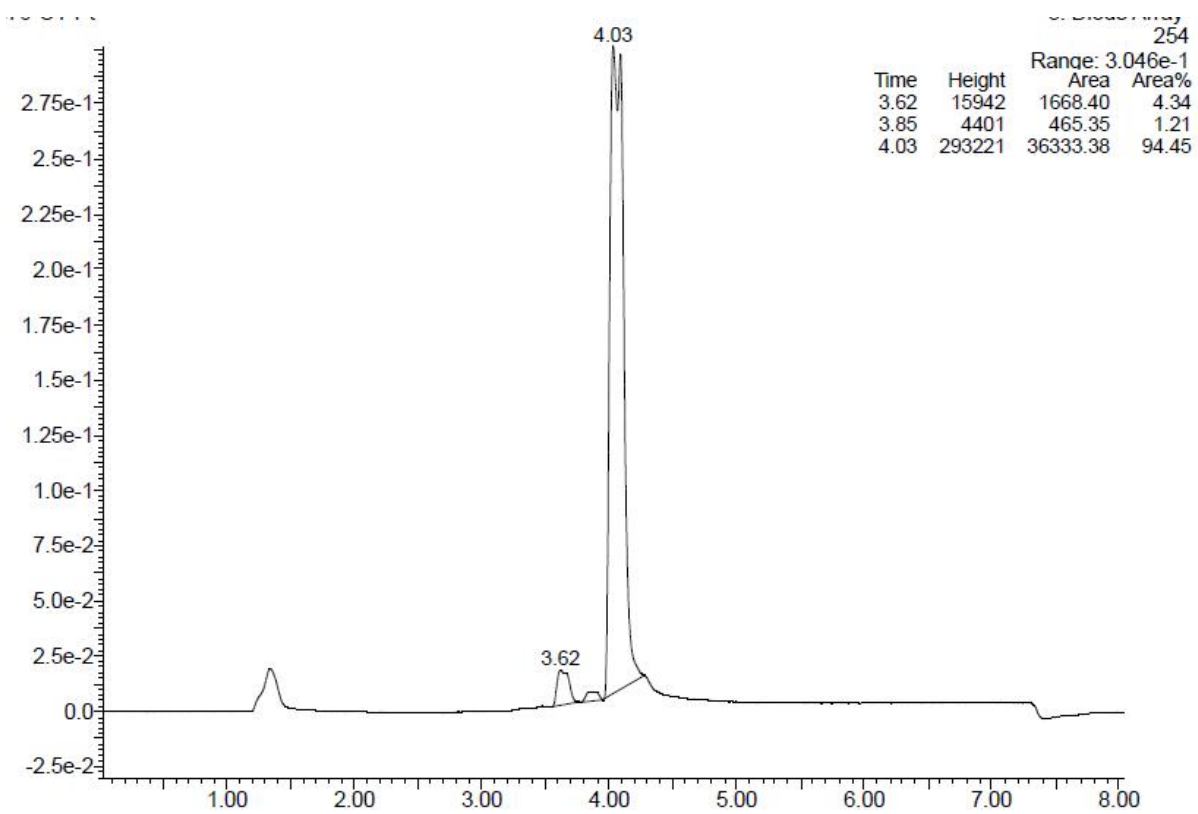
Cytotoxicity assay of **4h**



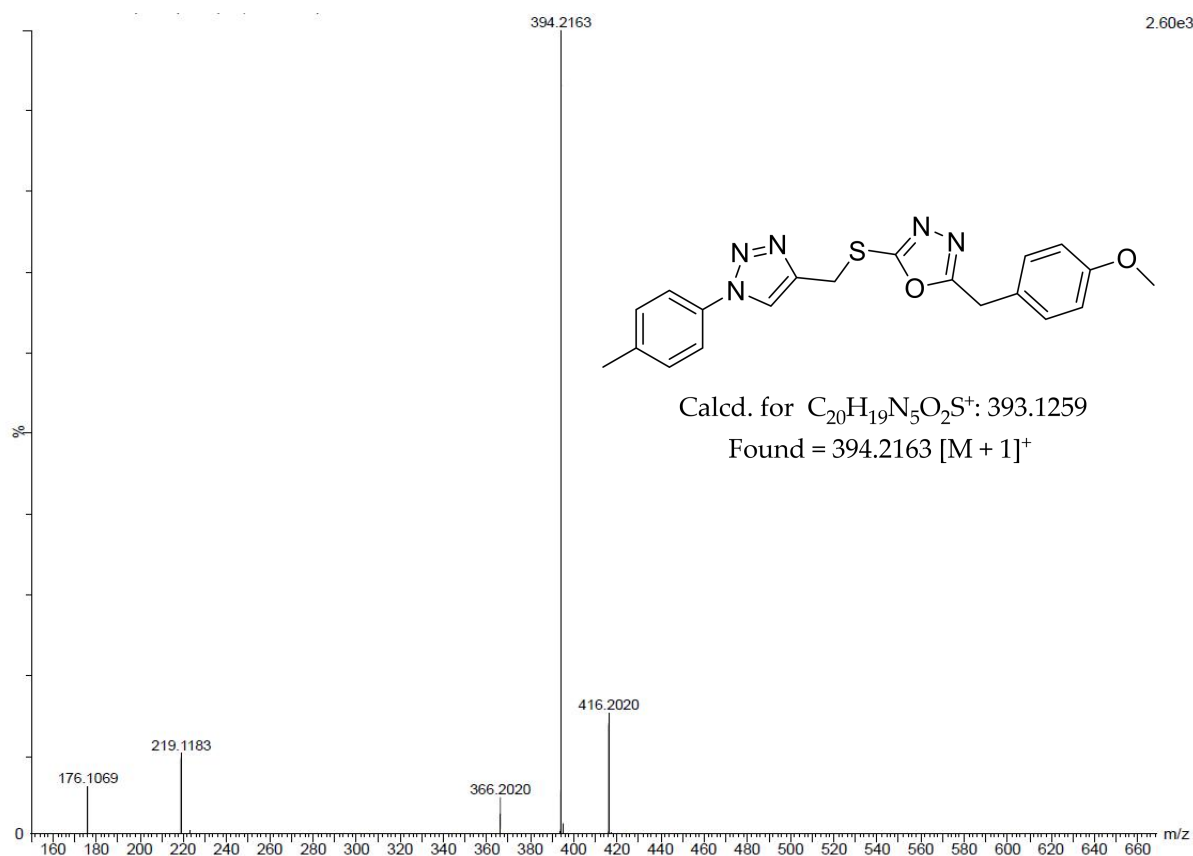
^1H NMR of **4i**



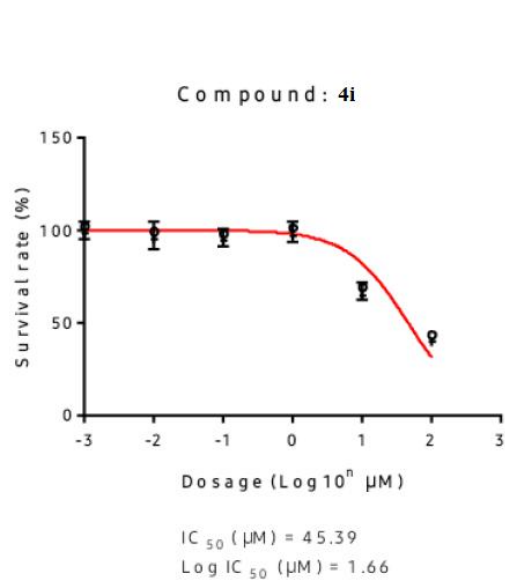
¹³C NMR of **4i**



Liquid chromatogram of **4i**



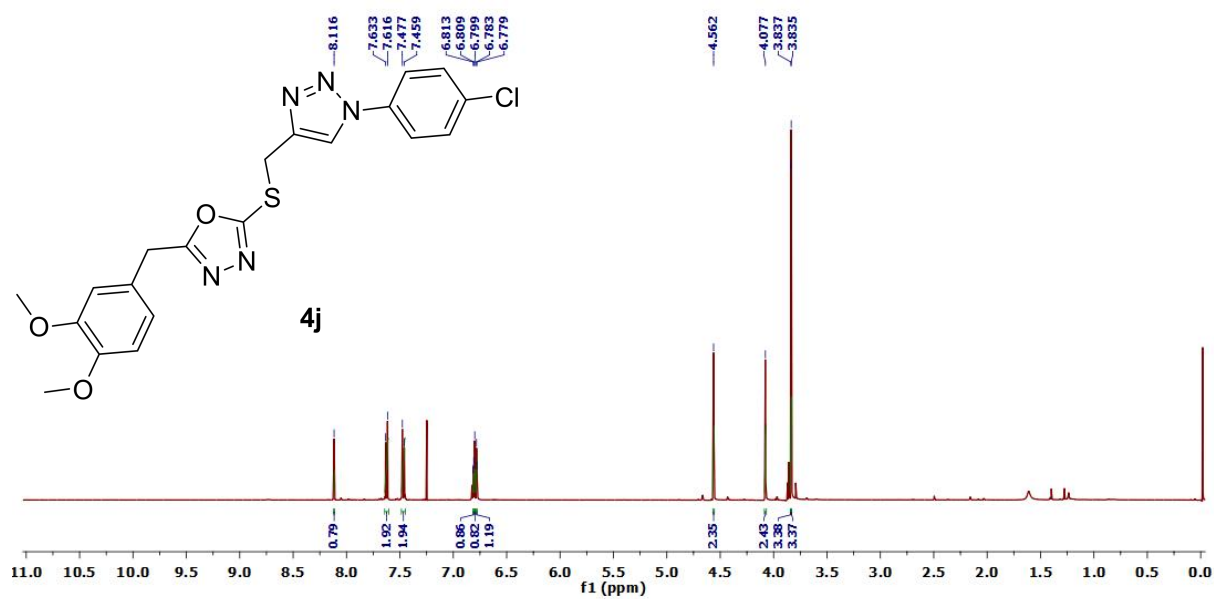
Mass spectra of **4i**



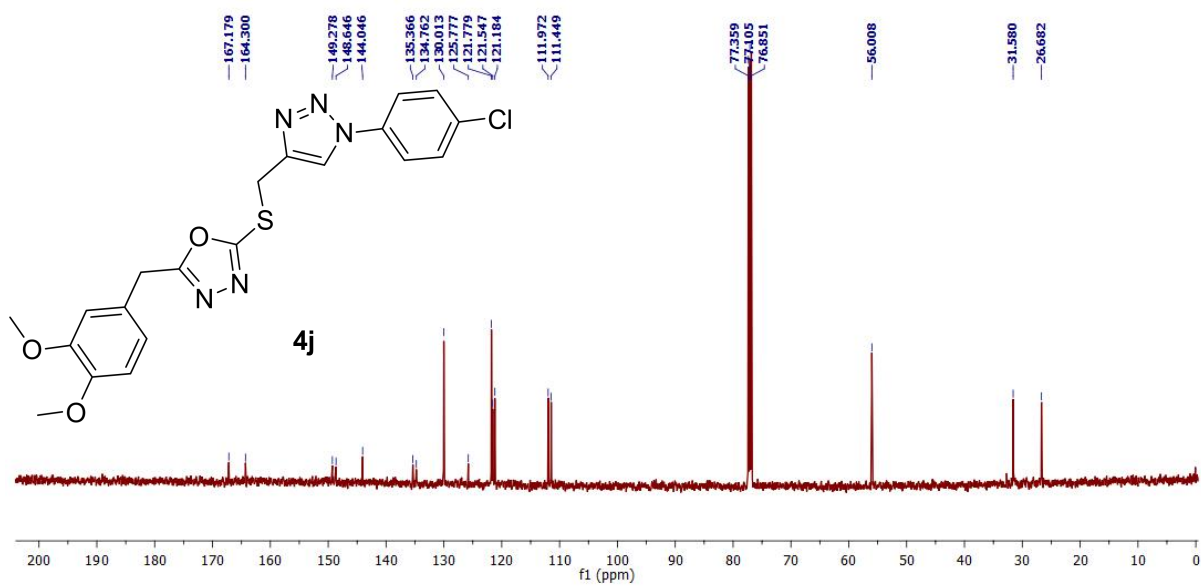
- Cell line: MCF-7 (2000 cells/per well⁹⁶-well plate)
- Treated time: 72hrs
- Assay: alamarBlue (4hrs incubated)
- Data: **4i**

Conc. (μM)	Viability	
	AVE.	\pm SD.
0	100.00	4.39
0.01	97.05	7.43
0.1	96.06	4.82
1	99.11	5.58
10	67.03	4.60
100	41.41	1.38

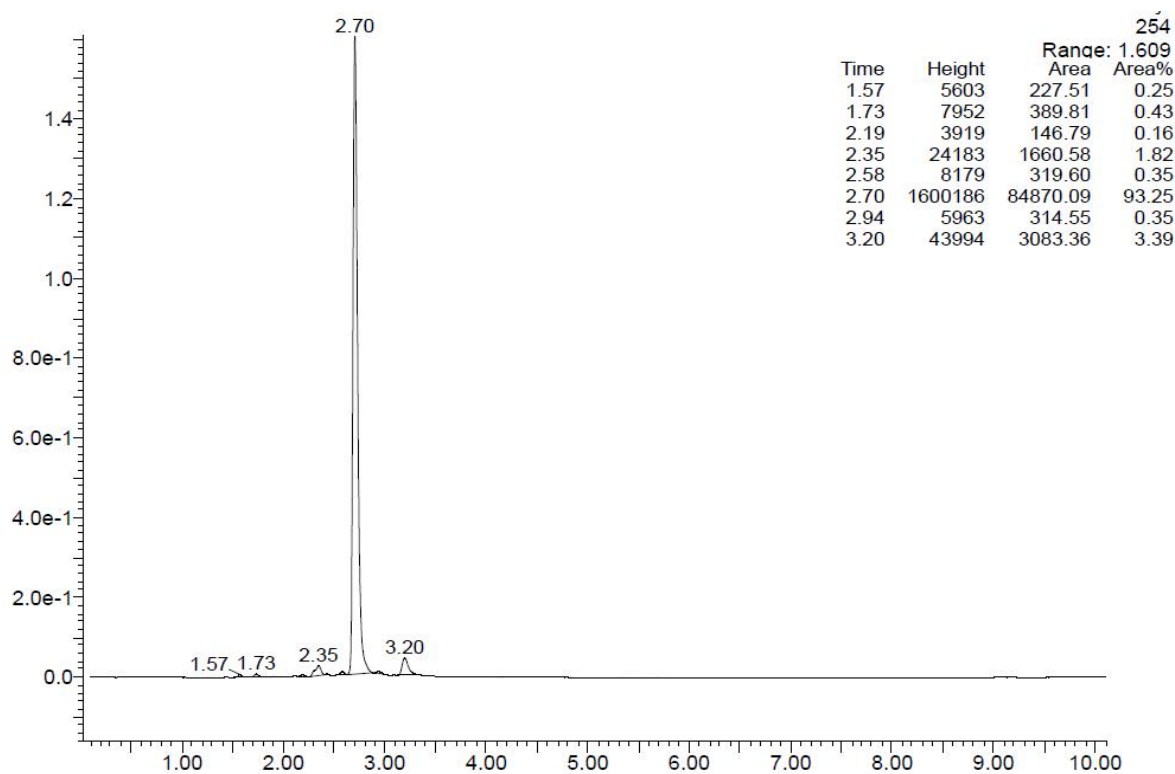
Cytotoxicity assay of **4i**



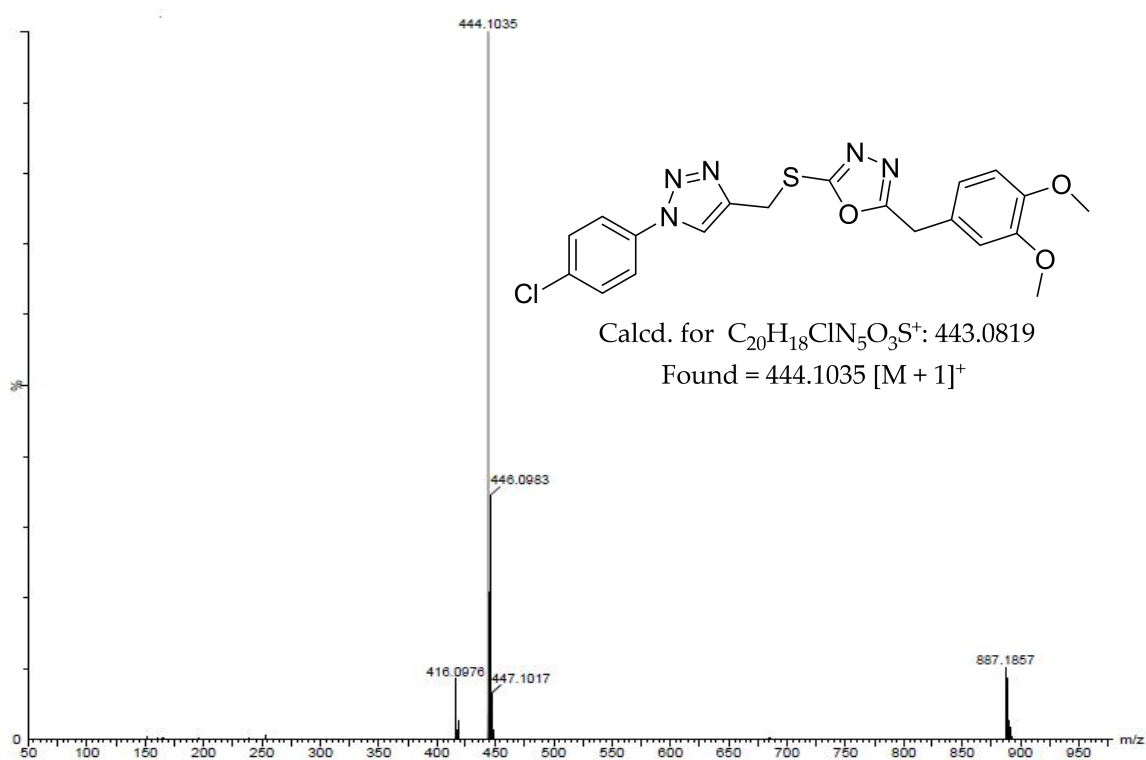
¹H NMR of **4j**



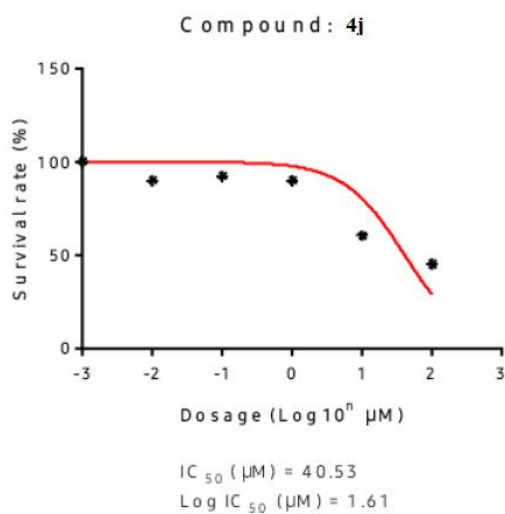
¹³C NMR of **4j**



Liquid chromatogram of **4j**



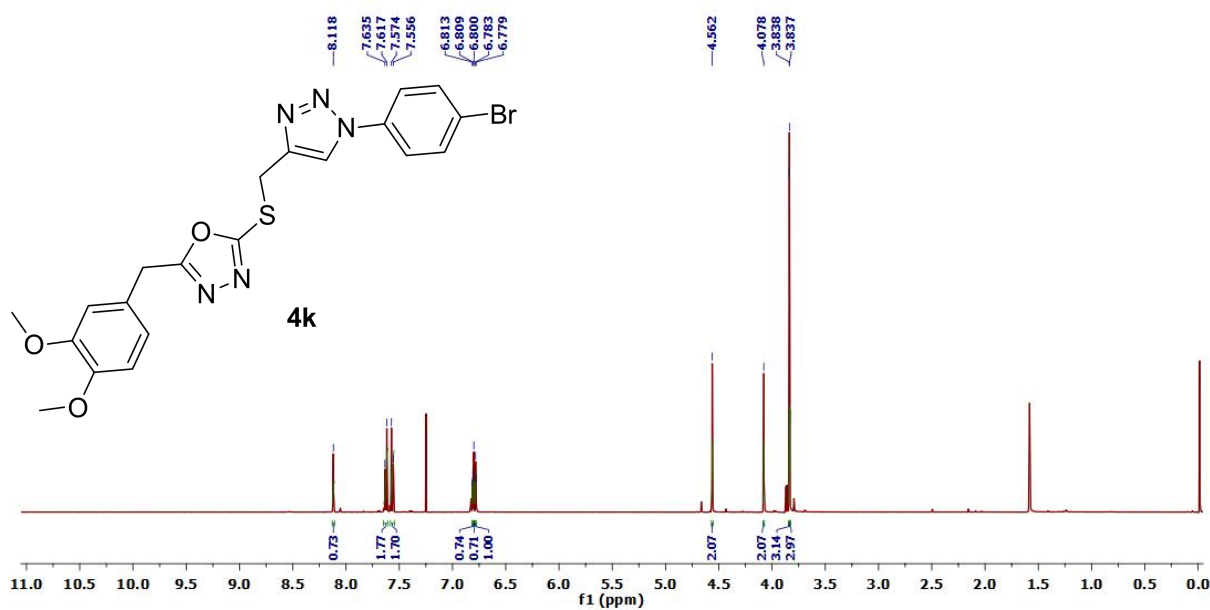
Mass spectra of **4j**



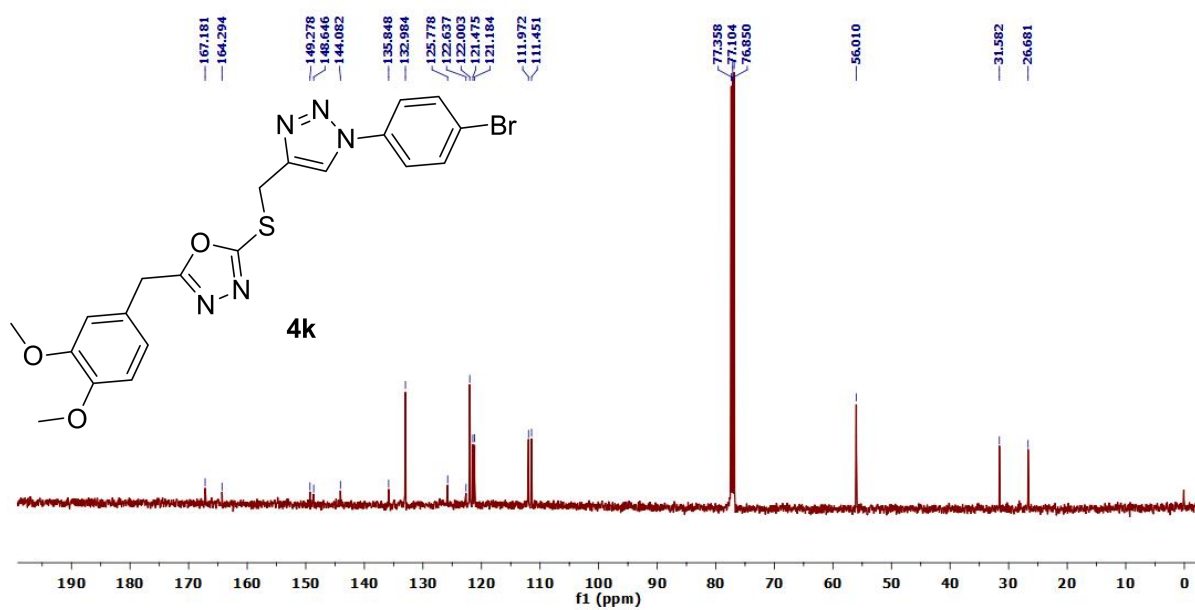
- Cell line: MCF-7 (2000 cells/per well⁹⁶-well plate)
- Treated time: 72hrs
- Assay: alamarBlue (4hrs incubated)
- Data: **4j**

Conc. (μM)	Viability	
	AVE.	\pm SD.
0	100.00	2.45
0.01	89.98	2.34
0.1	92.37	1.92
1	89.75	2.73
10	60.40	1.51
100	45.16	0.89

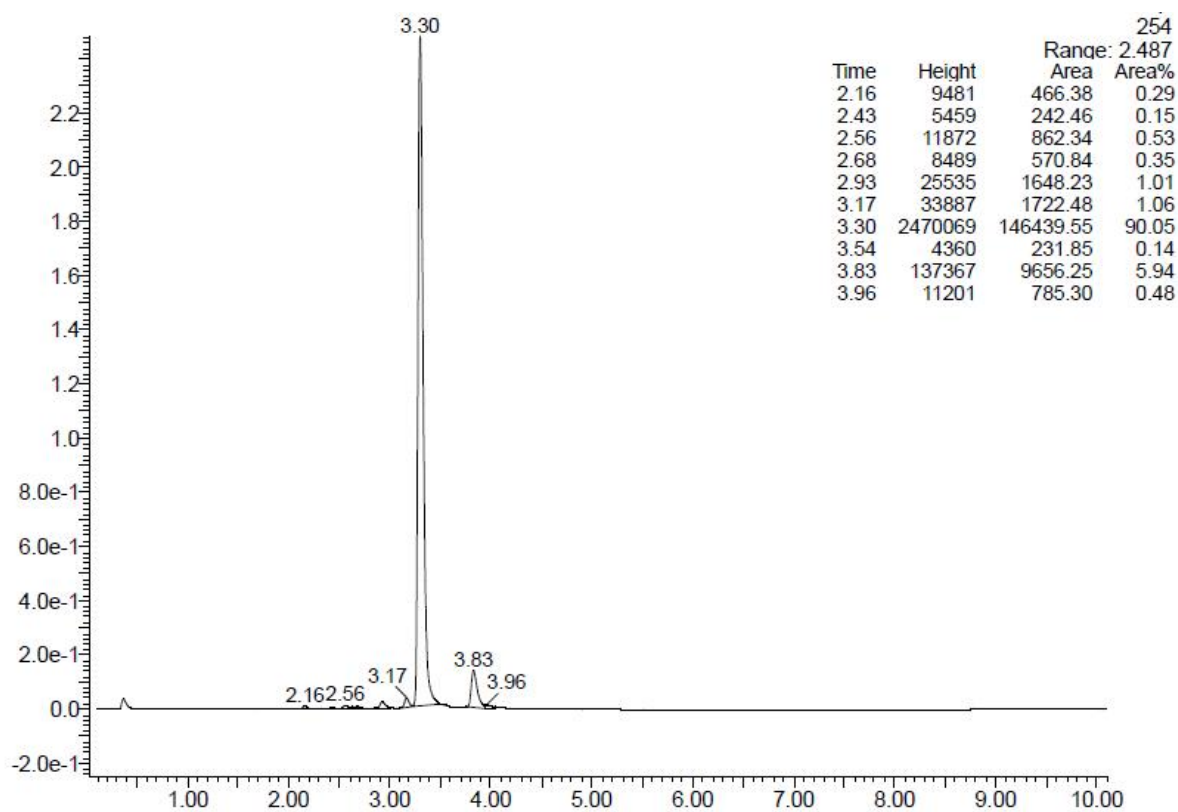
Cytotoxicity assay of **4j**



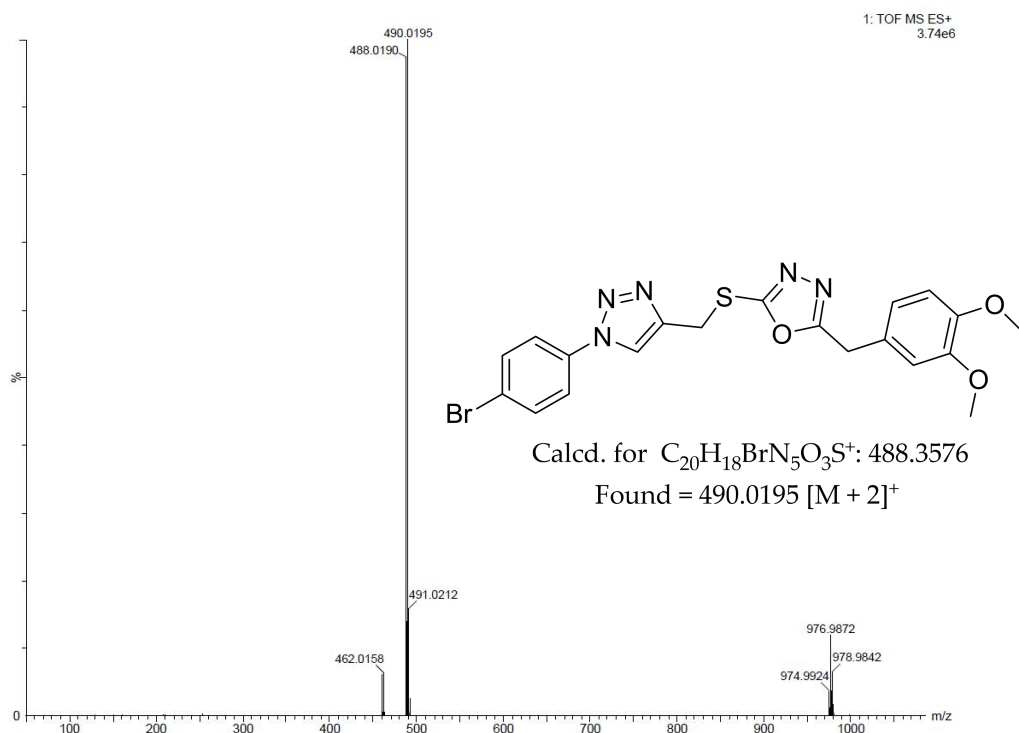
^1H NMR of **4k**



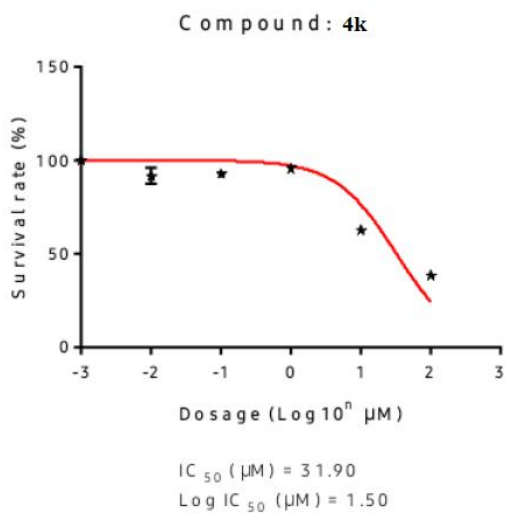
¹³C NMR of **4k**



Liquid chromatogram of **4k**



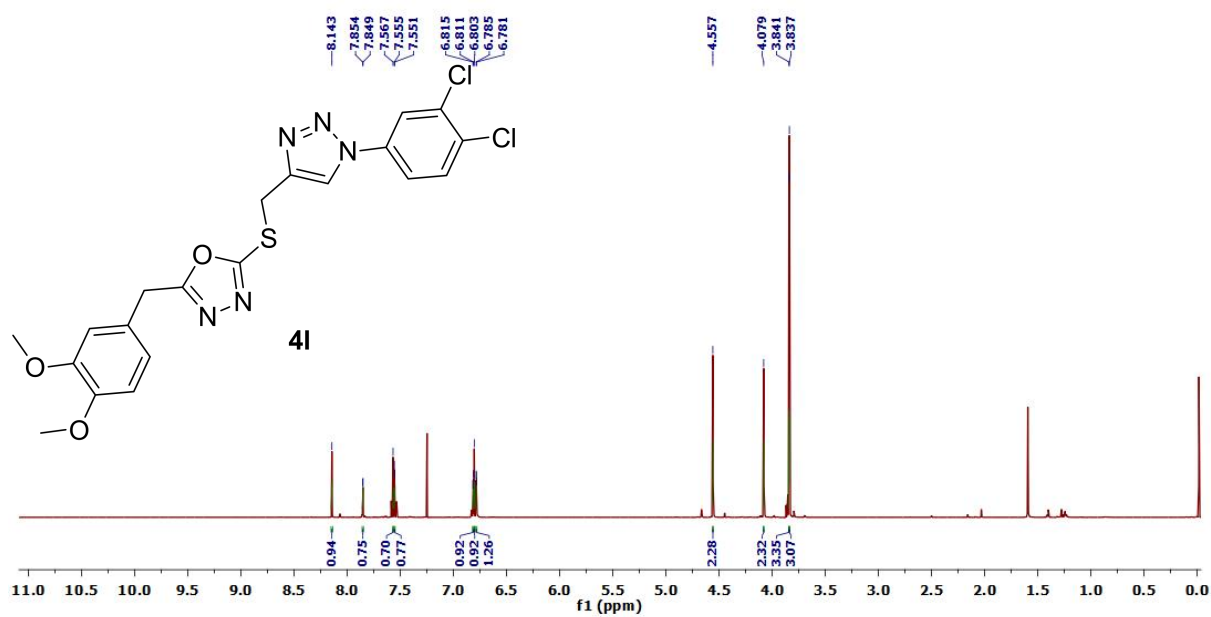
Mass spectra of **4k**



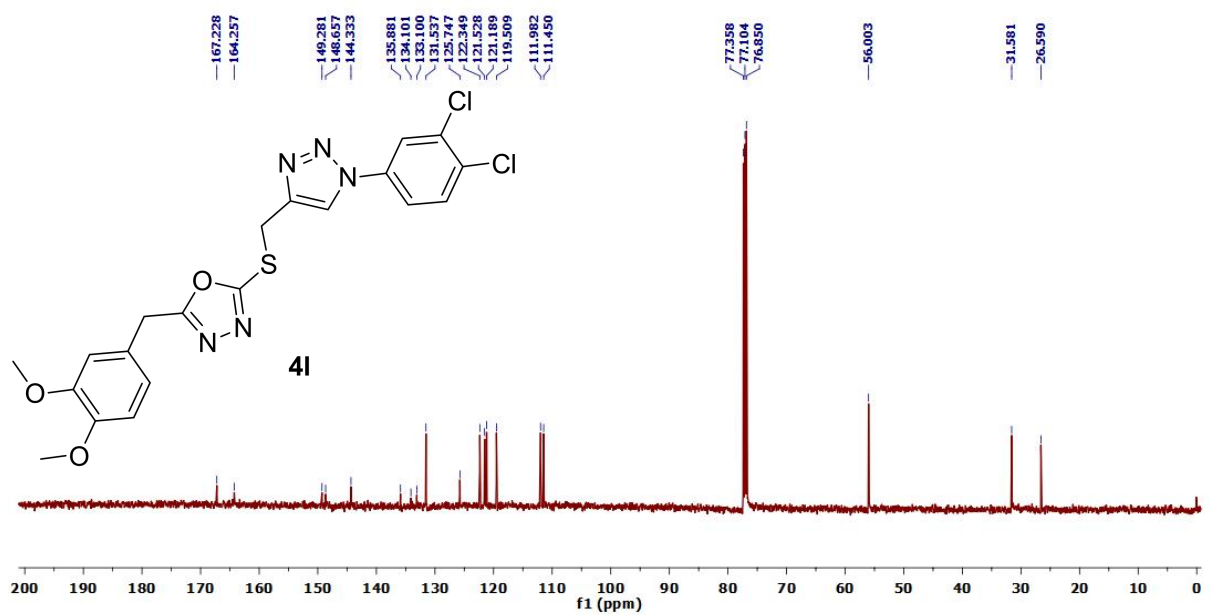
- Cell line: MCF-7 (2000 cells/per well⁹⁶-well plate)
- Treated time: 72hrs
- Assay: alamarBlue (4hrs incubated)
- Data: **4k**

Conc. (μM)	Viability	
	AVE.	\pm SD.
0	100.00	2.45
0.01	91.51	4.45
0.1	92.52	1.81
1	95.54	1.54
10	62.40	2.35
100	38.16	0.24

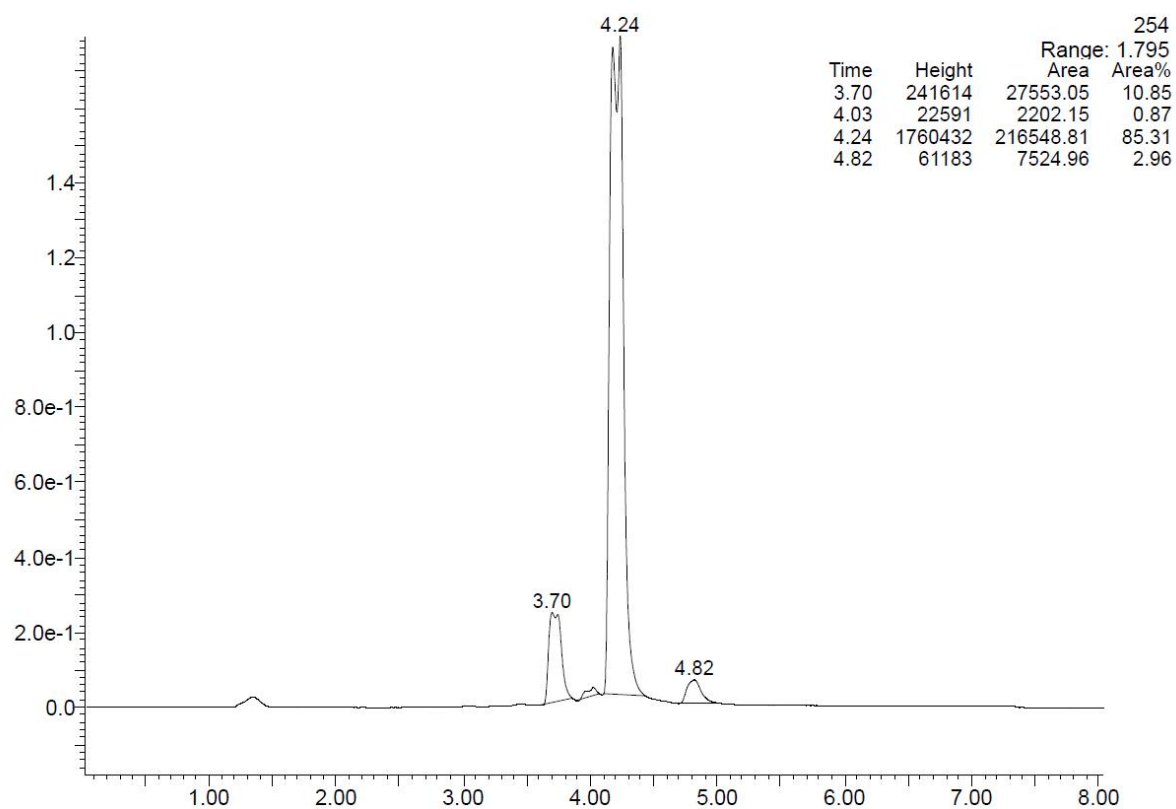
Cytotoxicity assay of **4k**



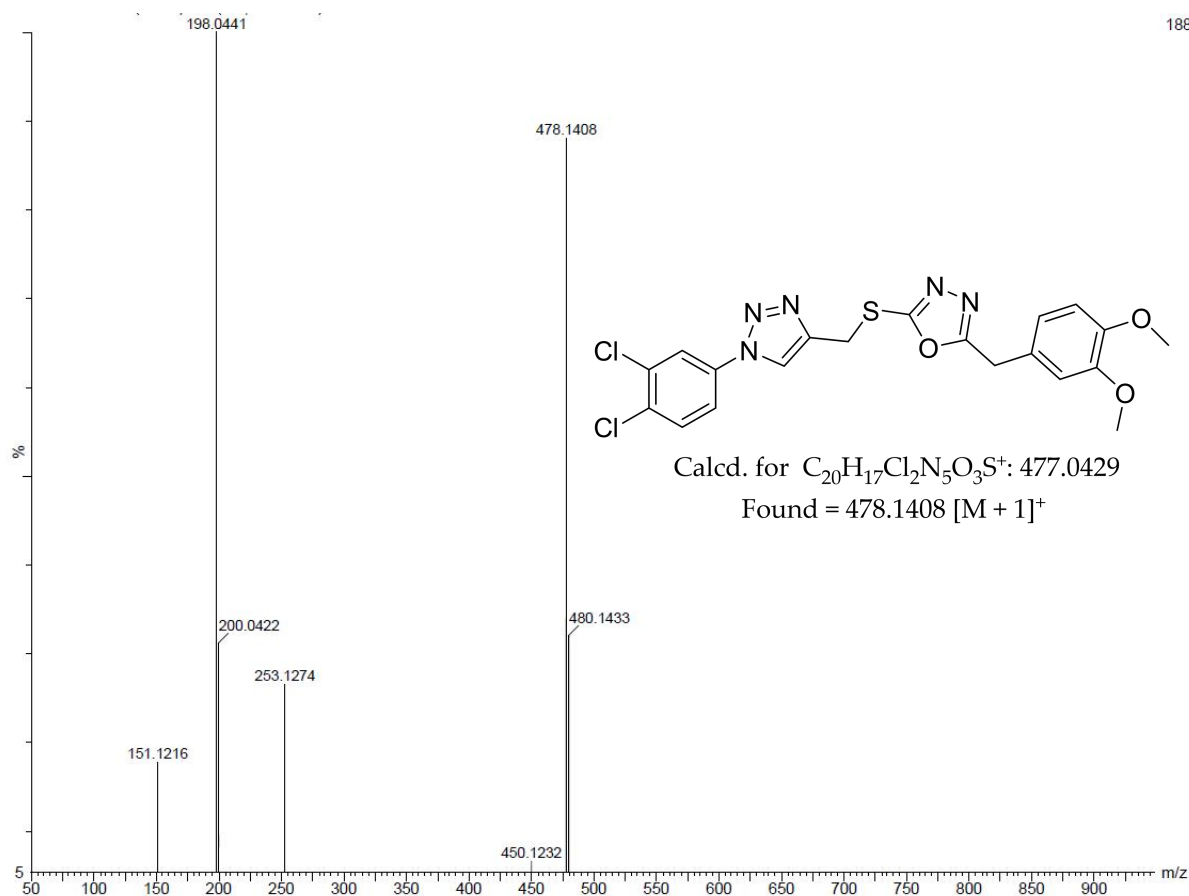
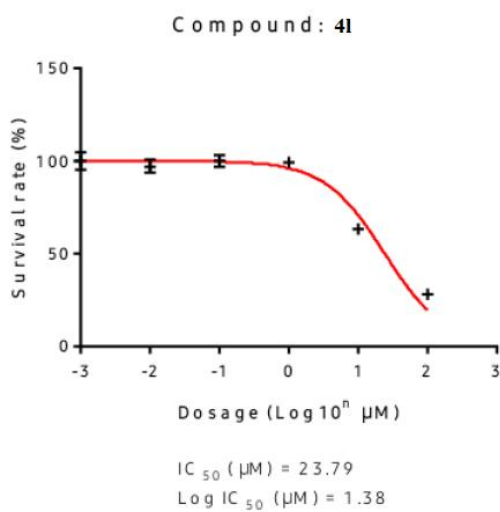
¹H NMR of 4l



¹³C NMR of 4l



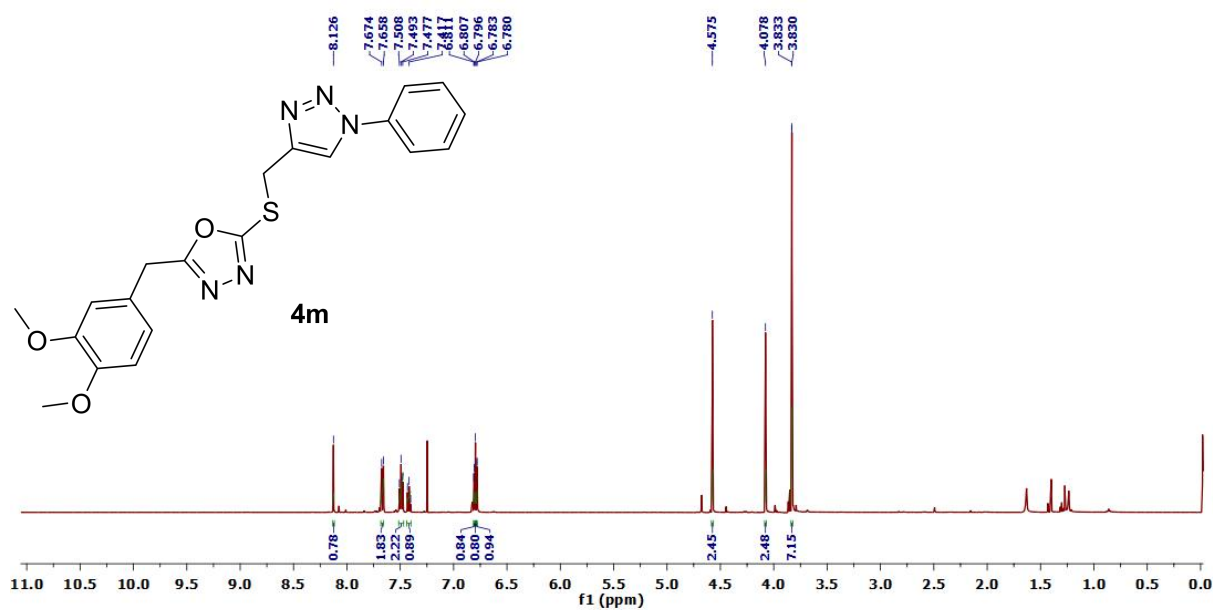
Liquid chromatogram of 41

Mass spectra of **41**

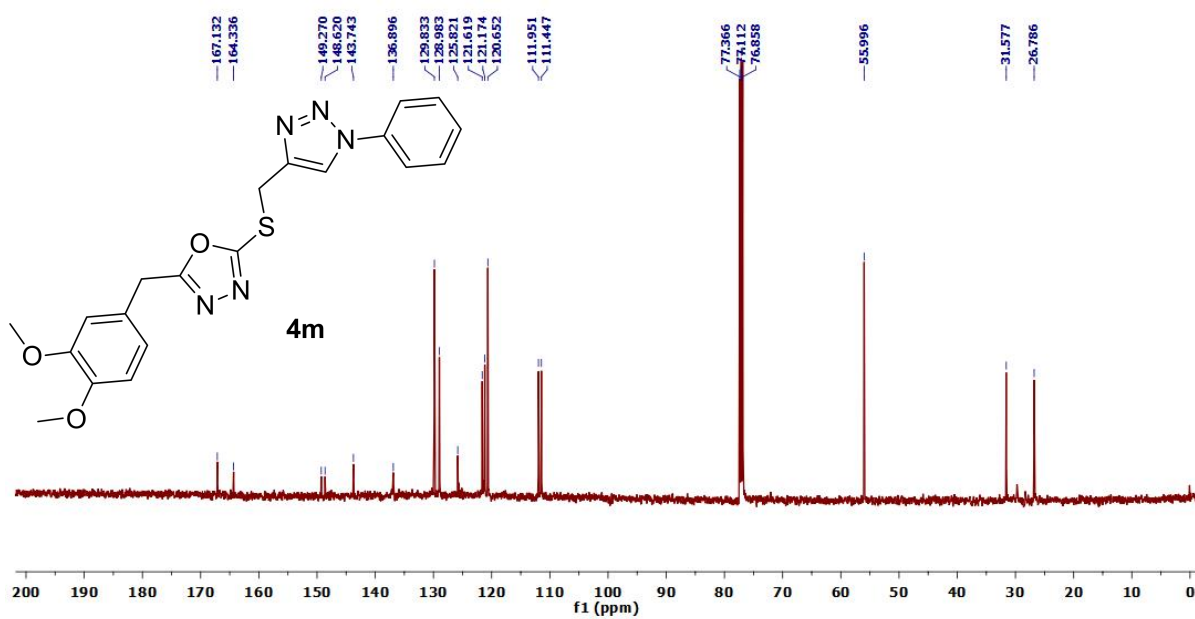
- Cell line: MCF-7 (2000 cells/per well⁹⁶-well plate)
- Treated time: 72hrs
- Assay: alamarBlue (4hrs incubated)
- Data: **41**

Conc. (μM)	Viability	
	AVE.	\pm SD.
0	100.00	4.88
0.01	97.10	3.69
0.1	99.81	3.32
1	98.95	2.06
10	63.26	2.05
100	28.07	0.86

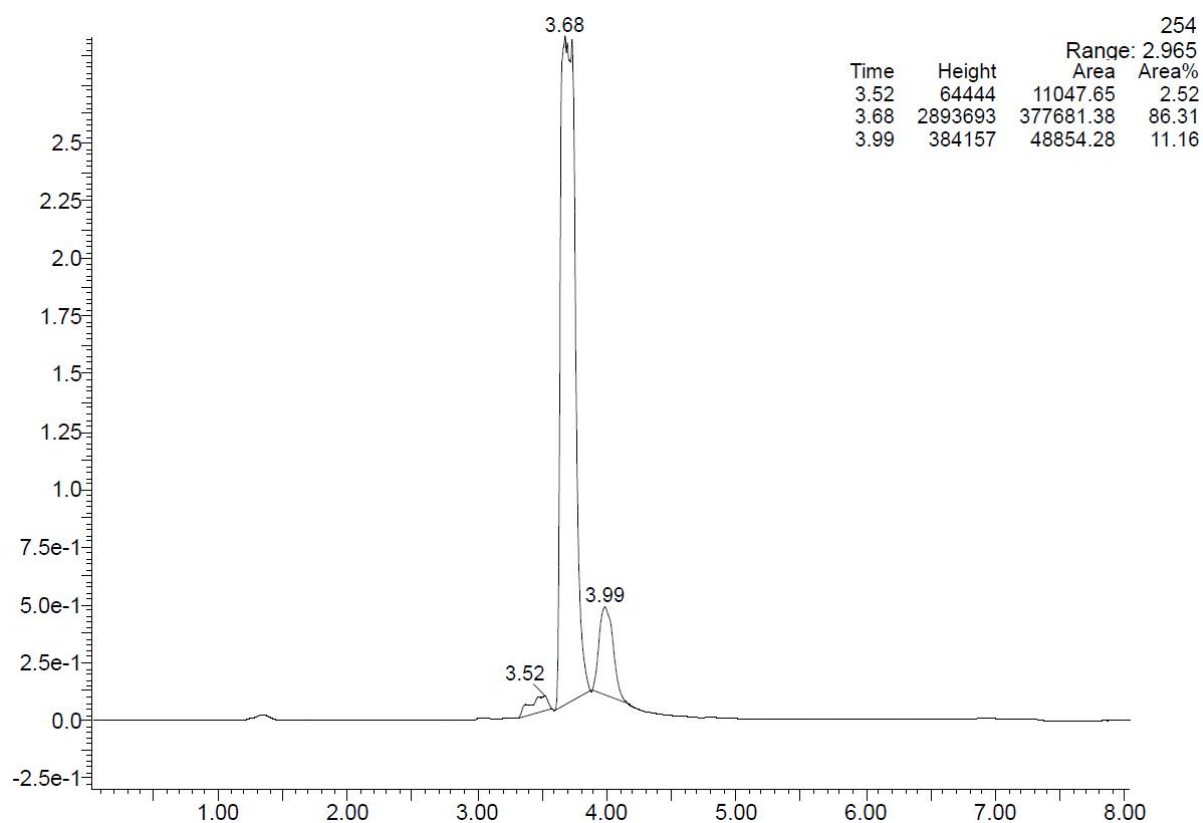
Cytotoxicity assay of **41**



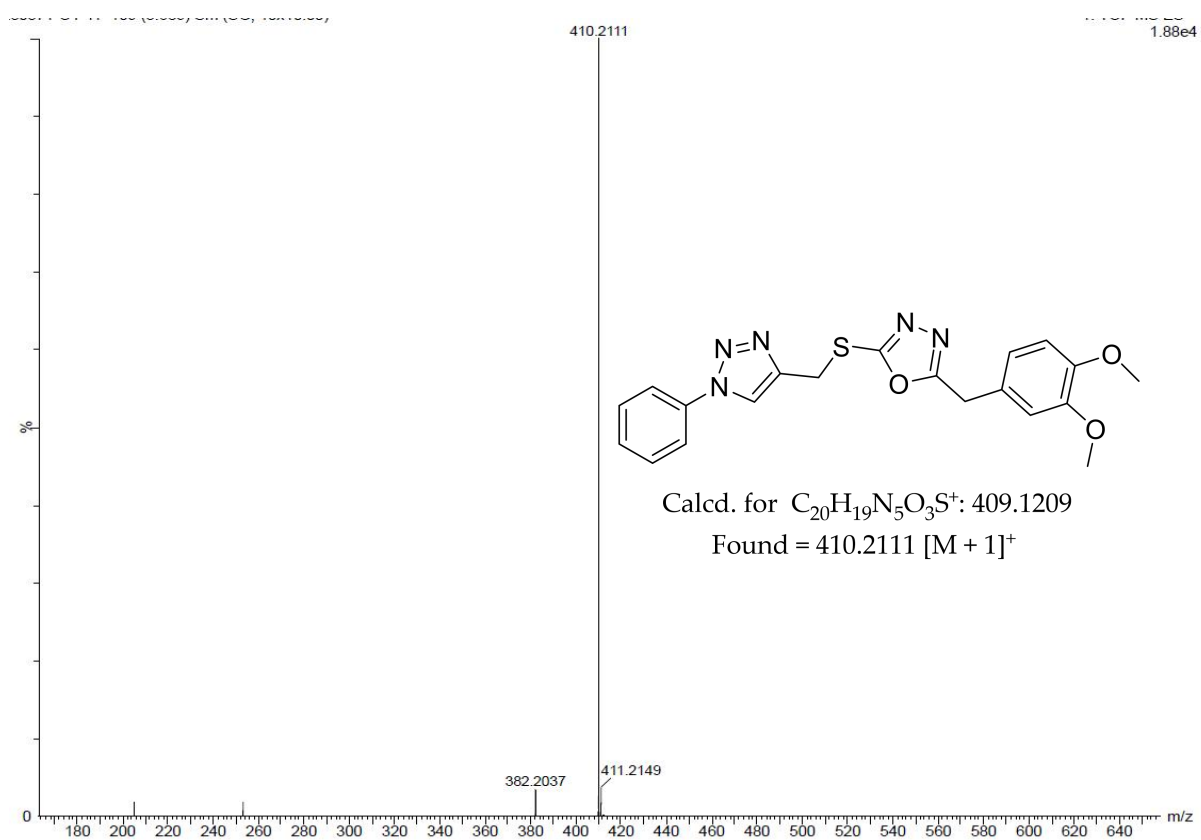
¹H NMR of **4m**



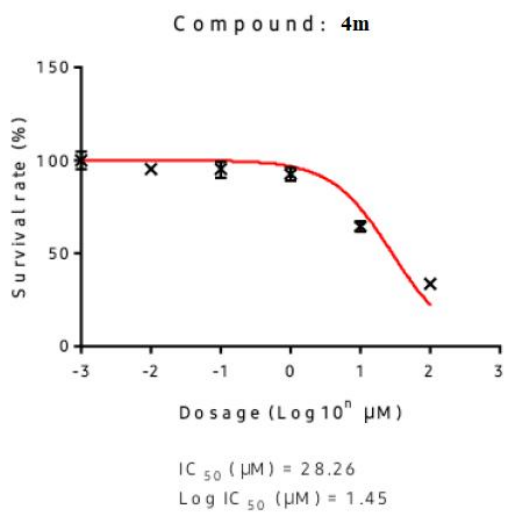
¹³C NMR of **4m**



Liquid chromatogram of **4m**



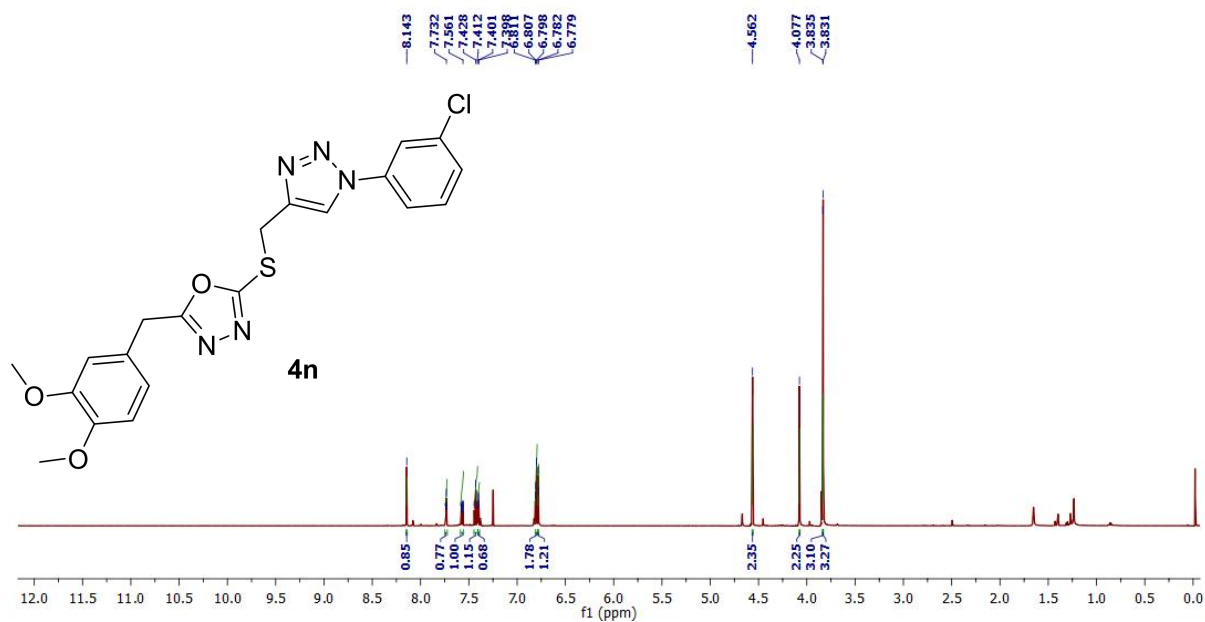
Mass spectra of **4m**



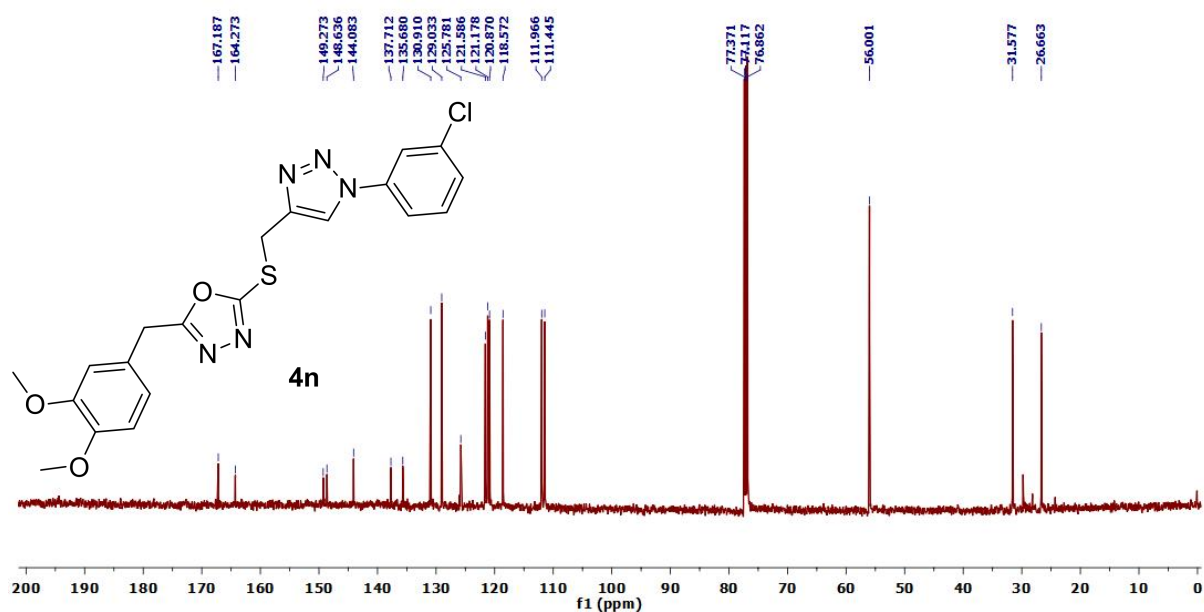
- Cell line: MCF-7 (2000 cells/per well⁹⁶-well plate)
- Treated time: 72hrs
- Assay: alamarBlue (4hrs incubated)
- Data: **4m**

Conc. (μM)	Viability	
	AVE.	\pm SD.
0	100.00	4.88
0.01	95.48	1.53
0.1	94.92	4.31
1	92.58	3.55
10	64.30	2.96
100	33.66	0.82

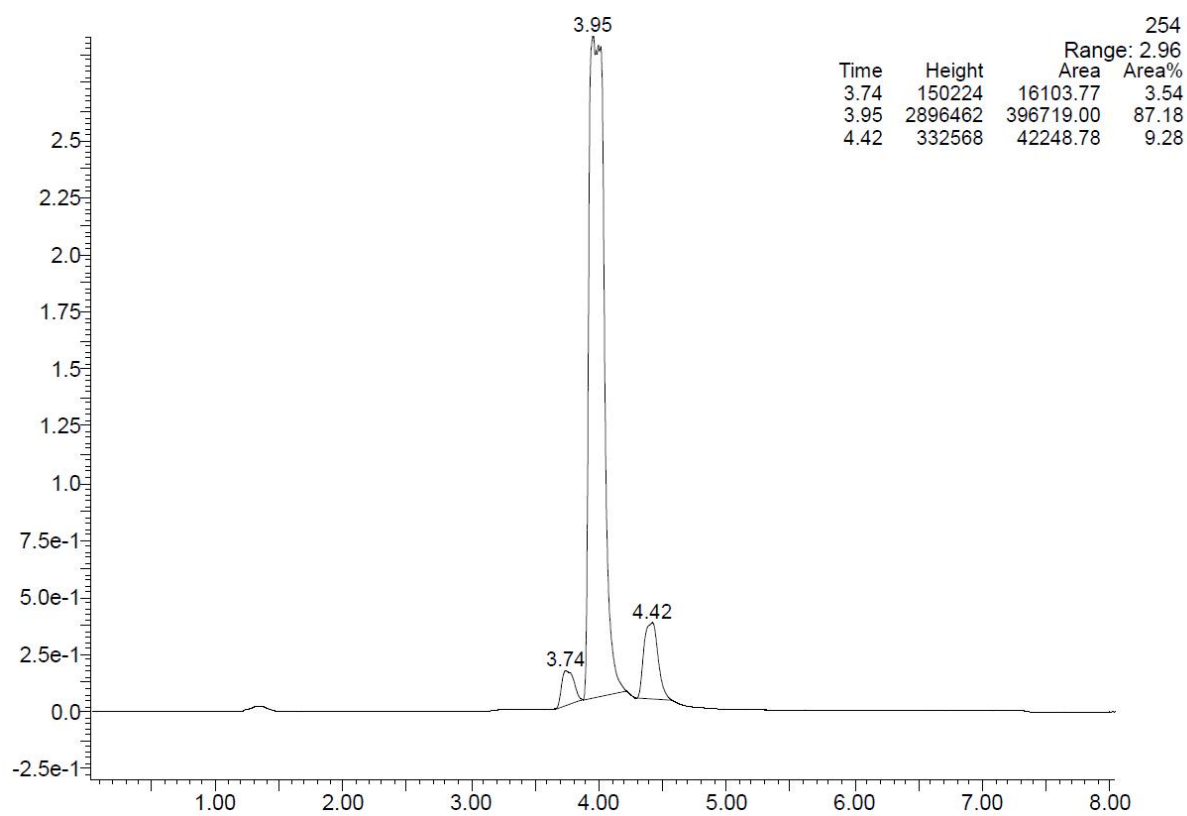
Cytotoxicity assay of **4m**



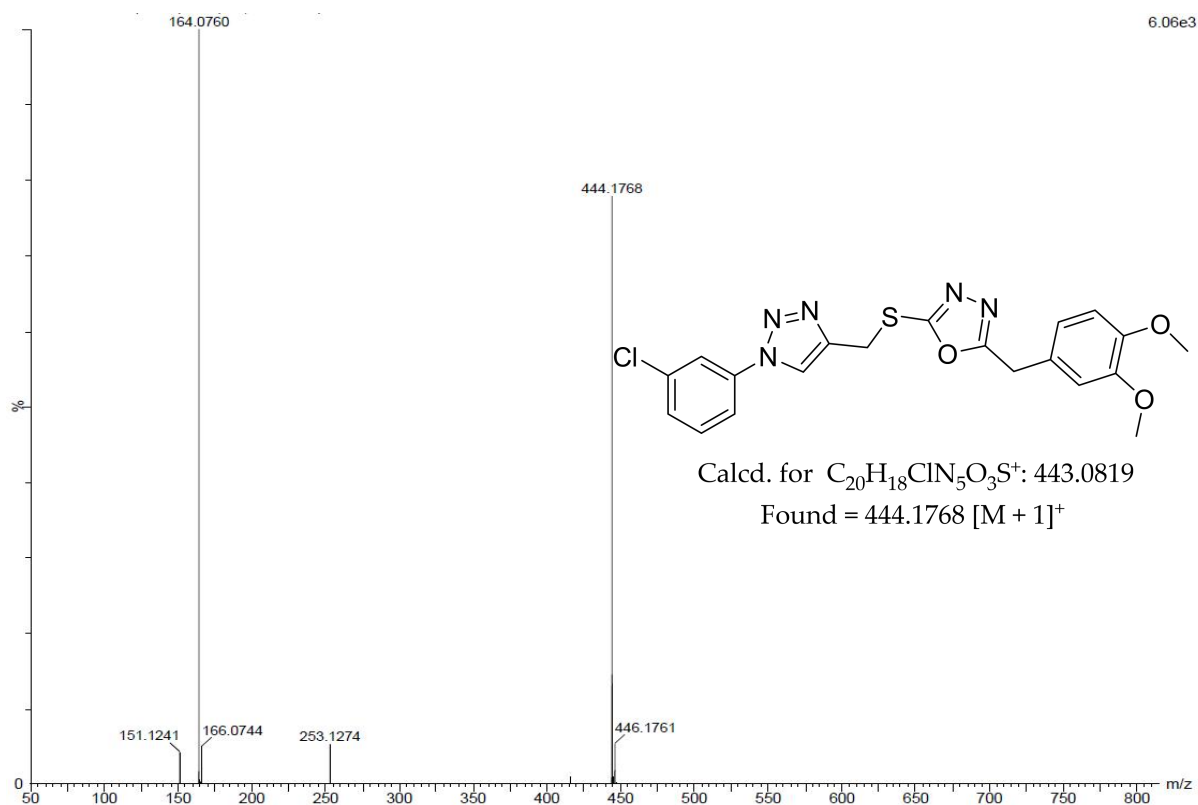
^1H NMR of **4n**



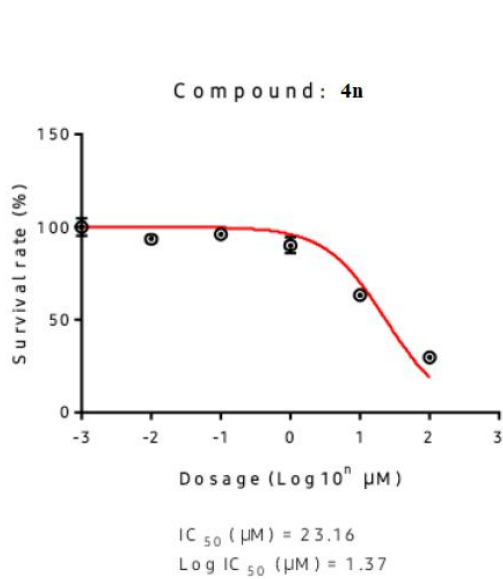
¹³C NMR of **4n**



Liquid chromatogram of **4n**



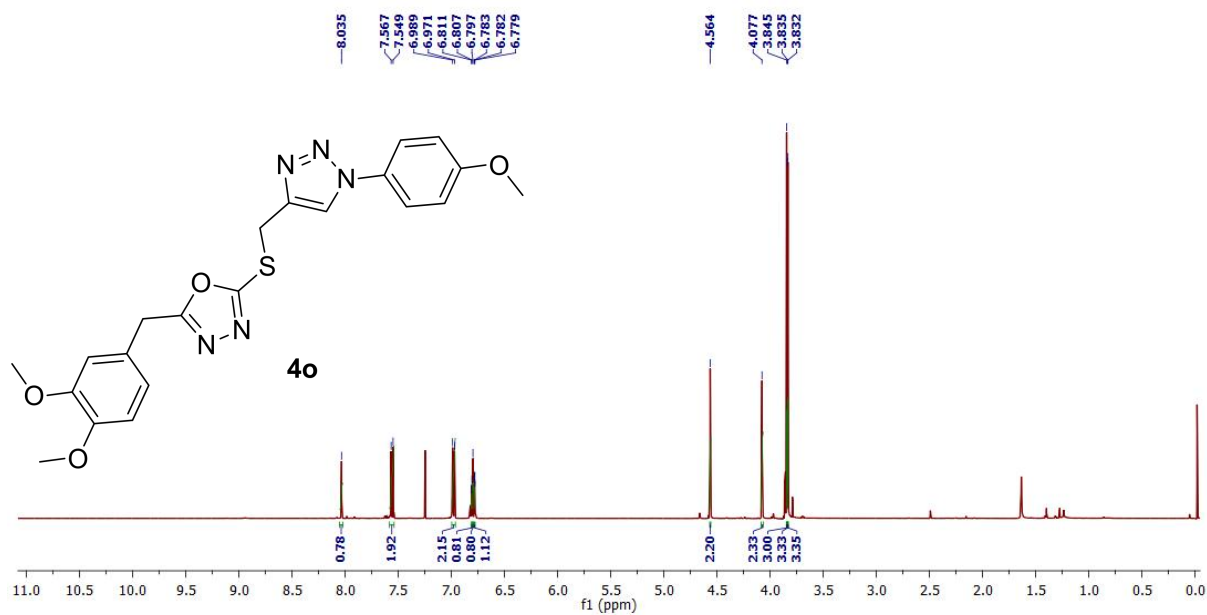
Mass spectra of **4n**



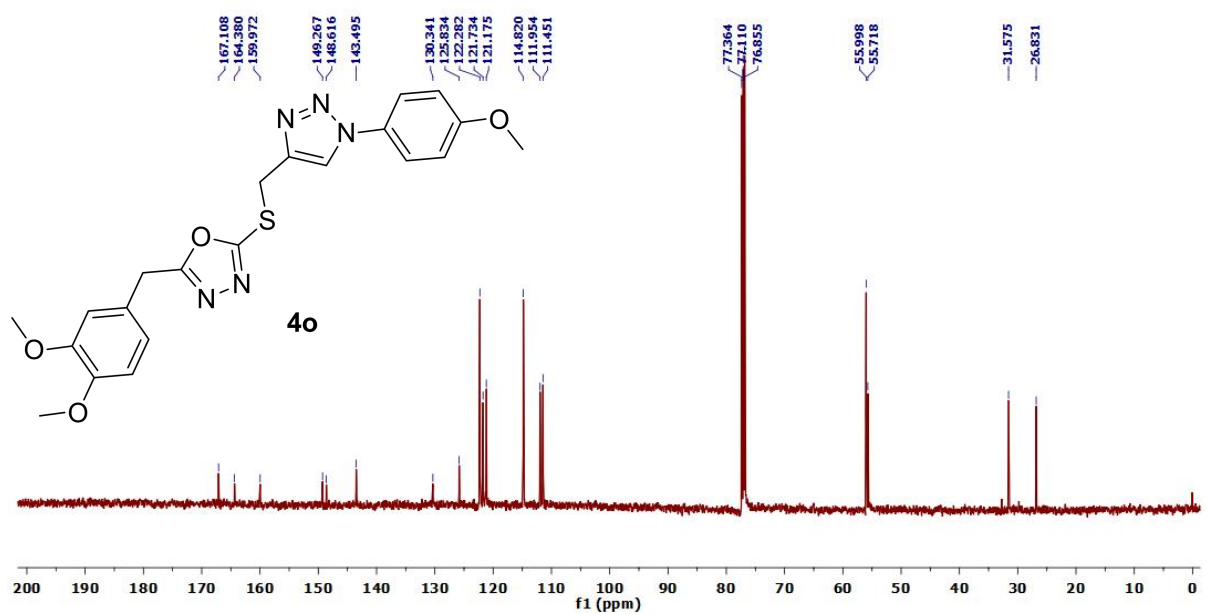
- Cell line: MCF-7 (2000 cells/per well⁹⁶-well plate)
- Treated time: 72hrs
- Assay: alamarBlue (4hrs incubated)
- Data: **4n**

Conc. (μM)	Viability	
	AVE.	\pm SD.
0	100.00	4.88
0.01	93.34	2.45
0.1	95.85	1.55
1	90.03	4.33
10	63.09	1.44
100	29.76	0.55

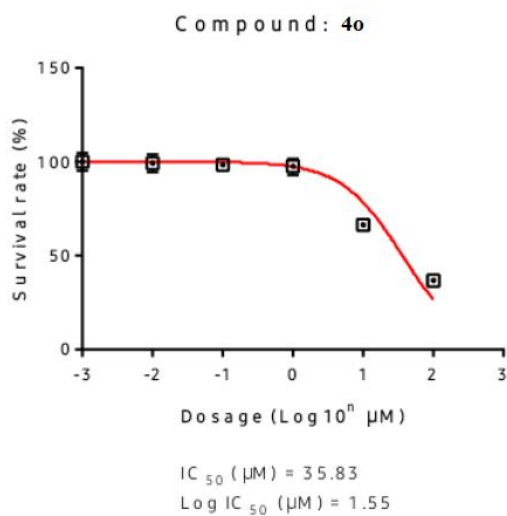
Cytotoxicity assay of **4n**



¹H NMR of 4o



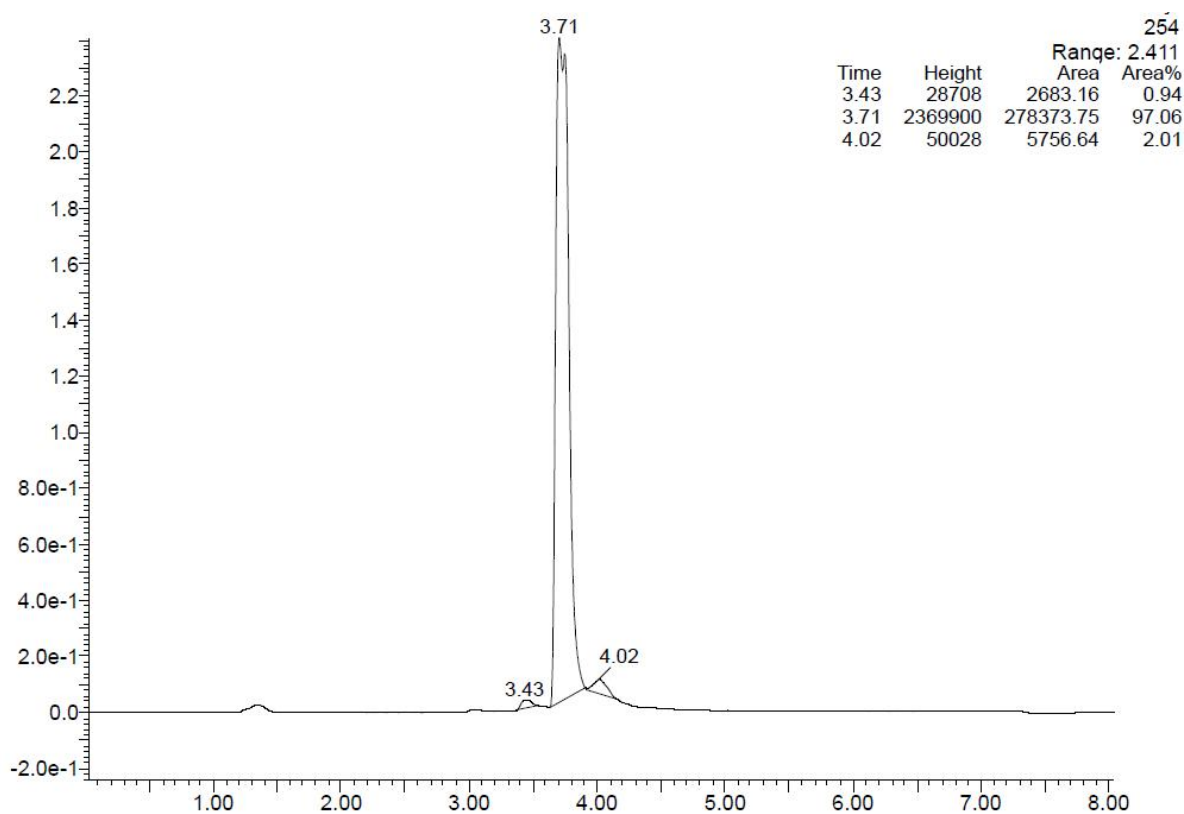
¹³C NMR of 4o



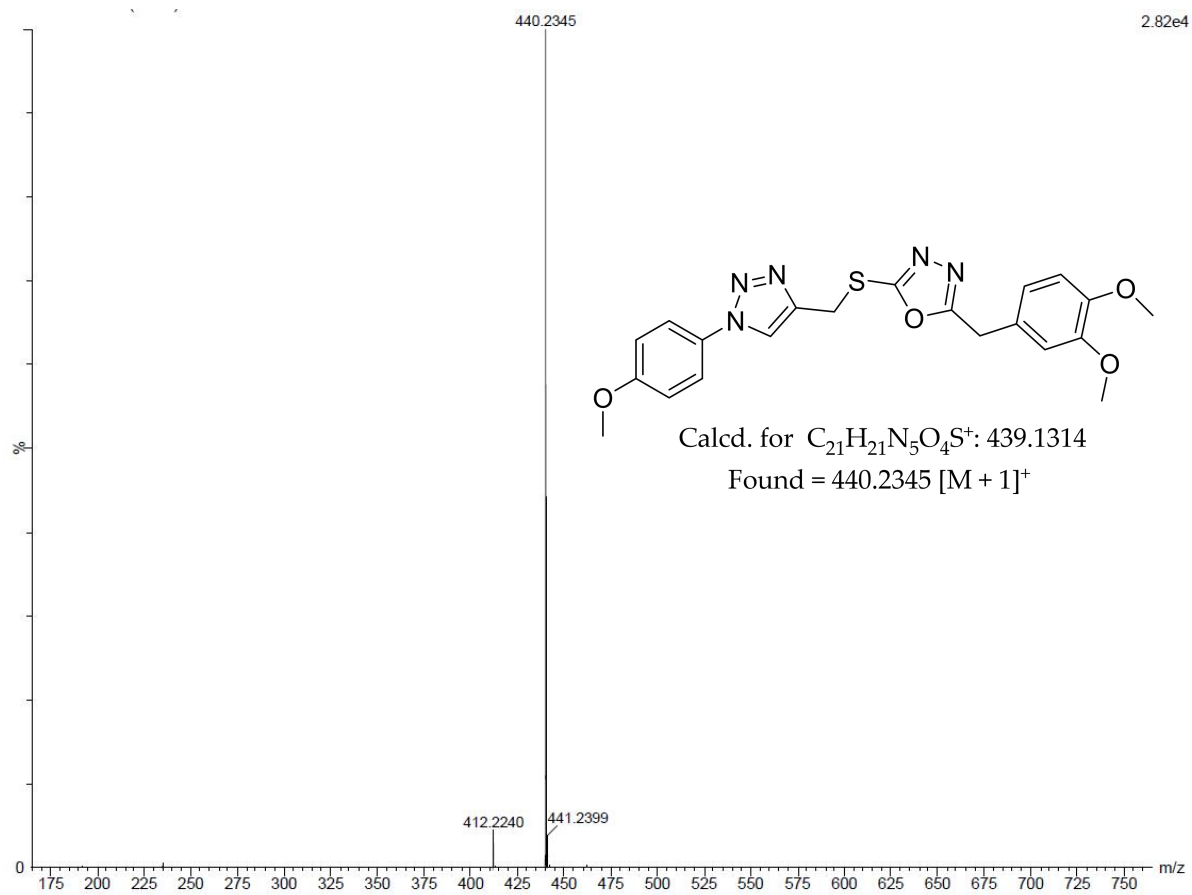
- Cell line: MCF-7 (2000 cells/per well⁹⁶-well plate)
- Treated time: 72hrs
- Assay: alamarBlue (4hrs incubated)
- Data: 4o

Conc. (μM)	Viability	
	AVE.	\pm SD.
0	100.00	4.88
0.01	99.23	4.63
0.1	98.28	2.95
1	97.35	4.15
10	66.42	1.91
100	36.72	0.69

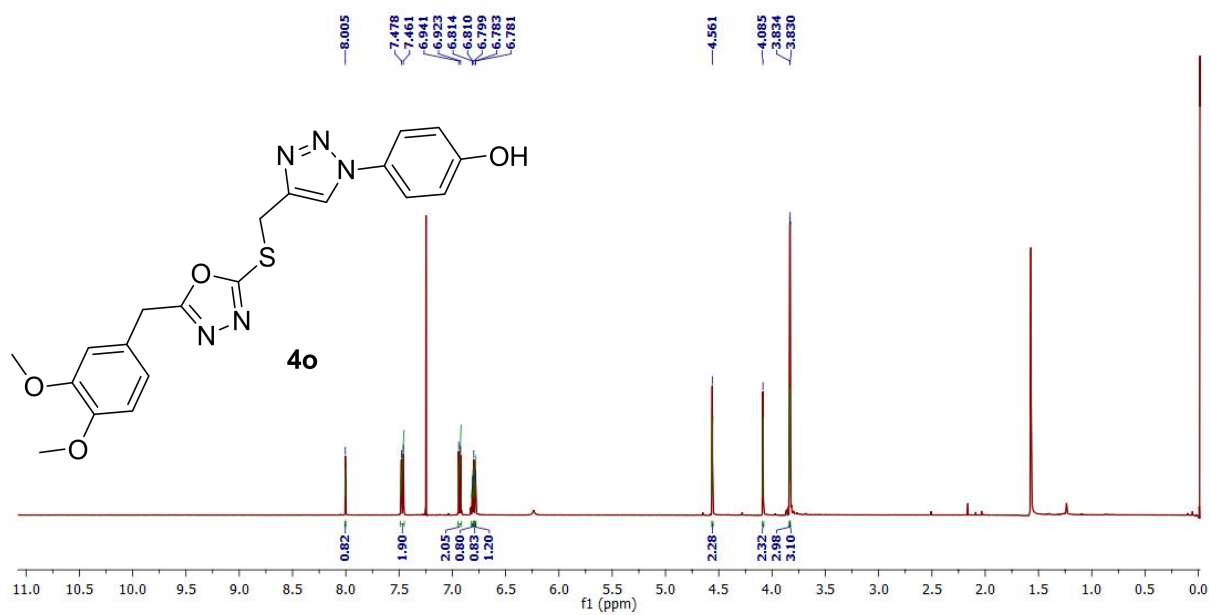
Cytotoxicity assay of 4o



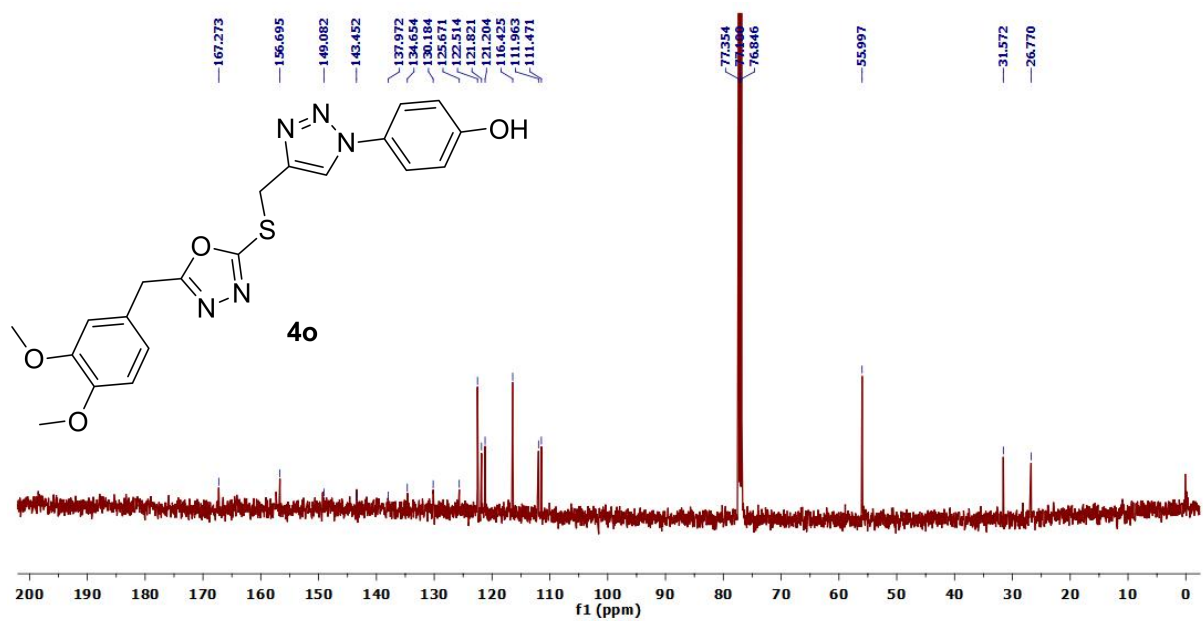
Liquid chromatogram of 4o



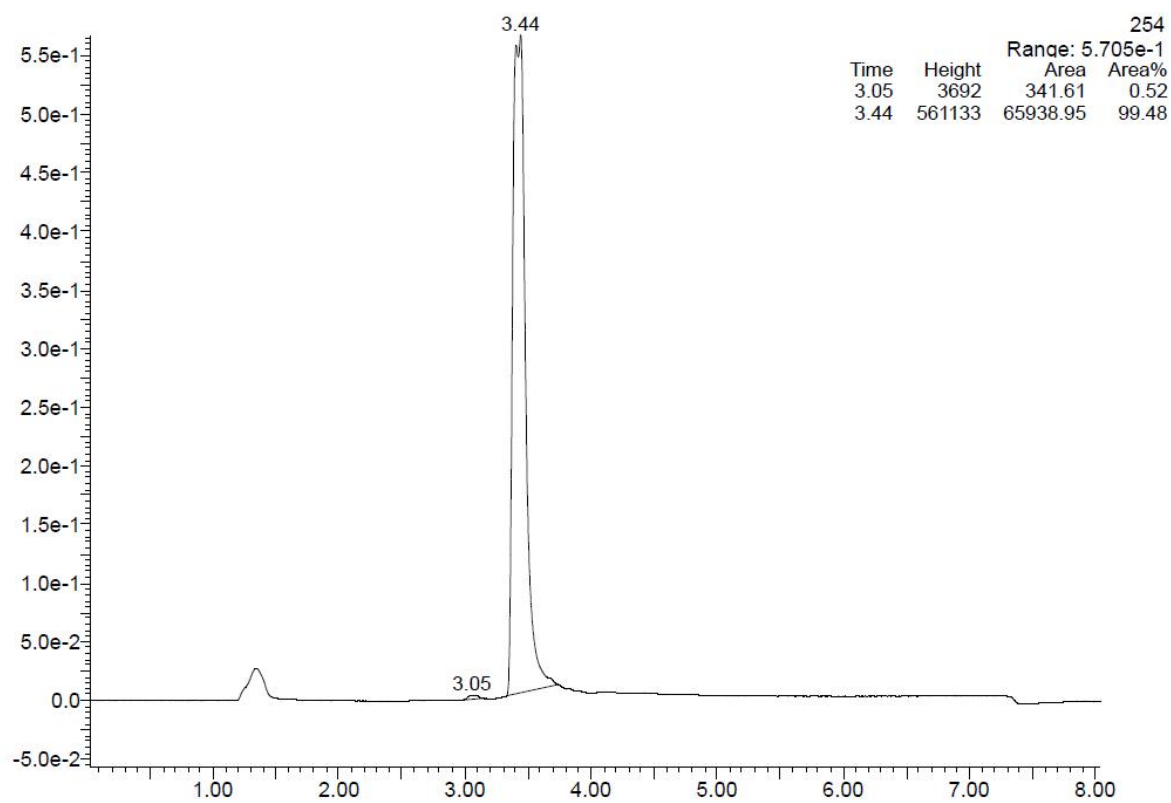
Mass spectra of **4o**



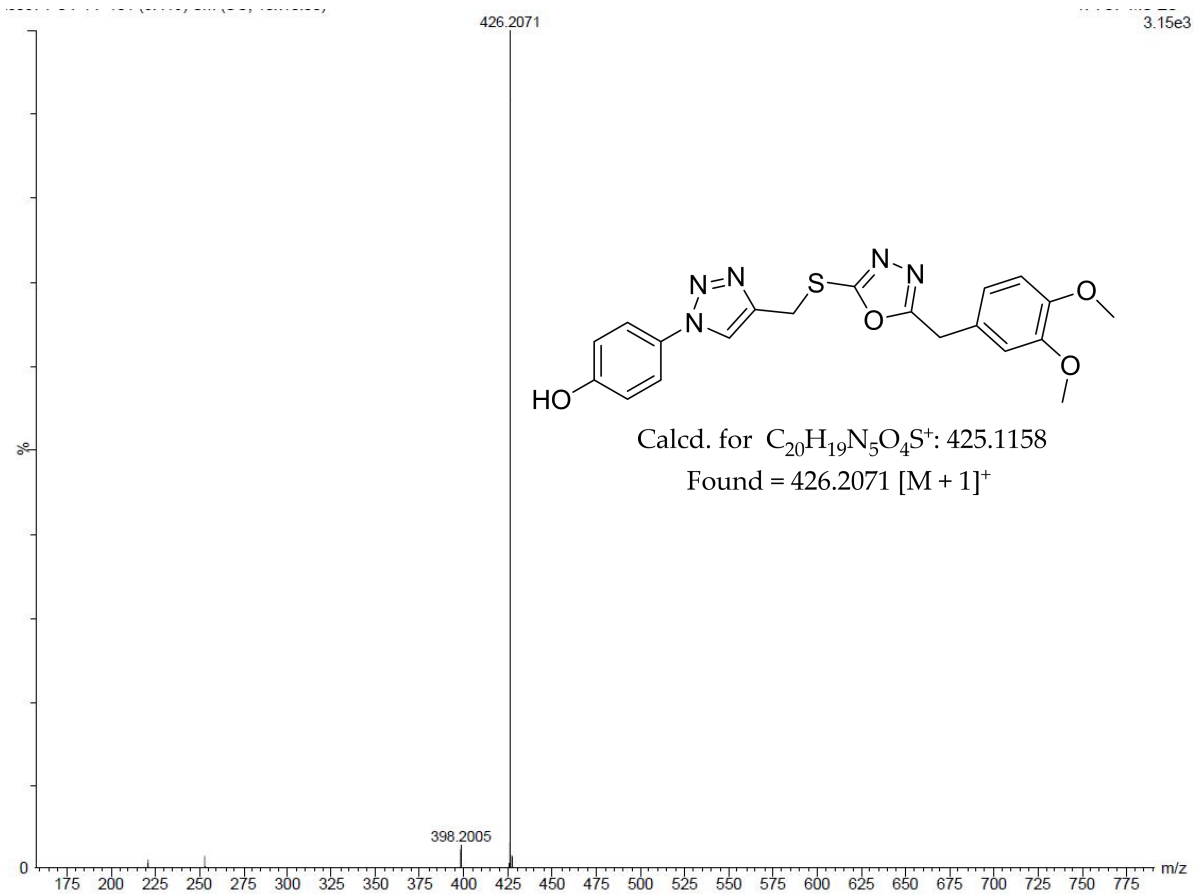
1H NMR of **4p**



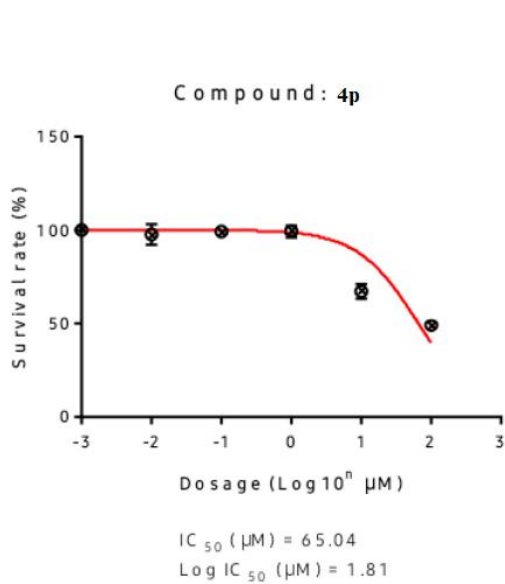
^{13}C NMR of **4p**



Liquid chromatogram of **4p**



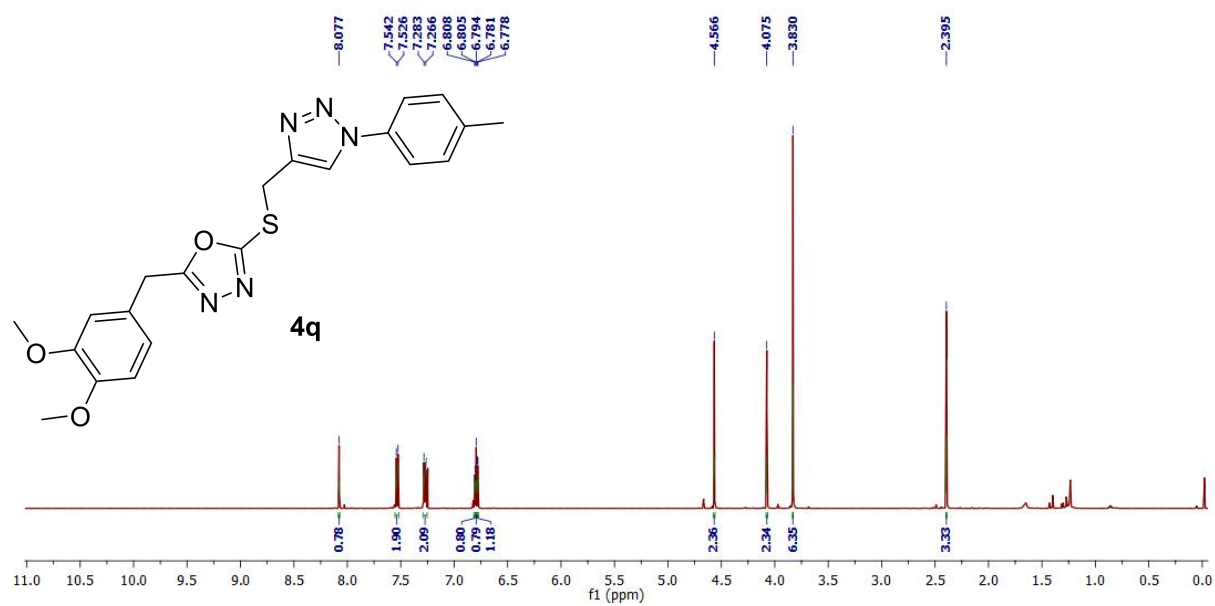
Mass spectra of **4p**



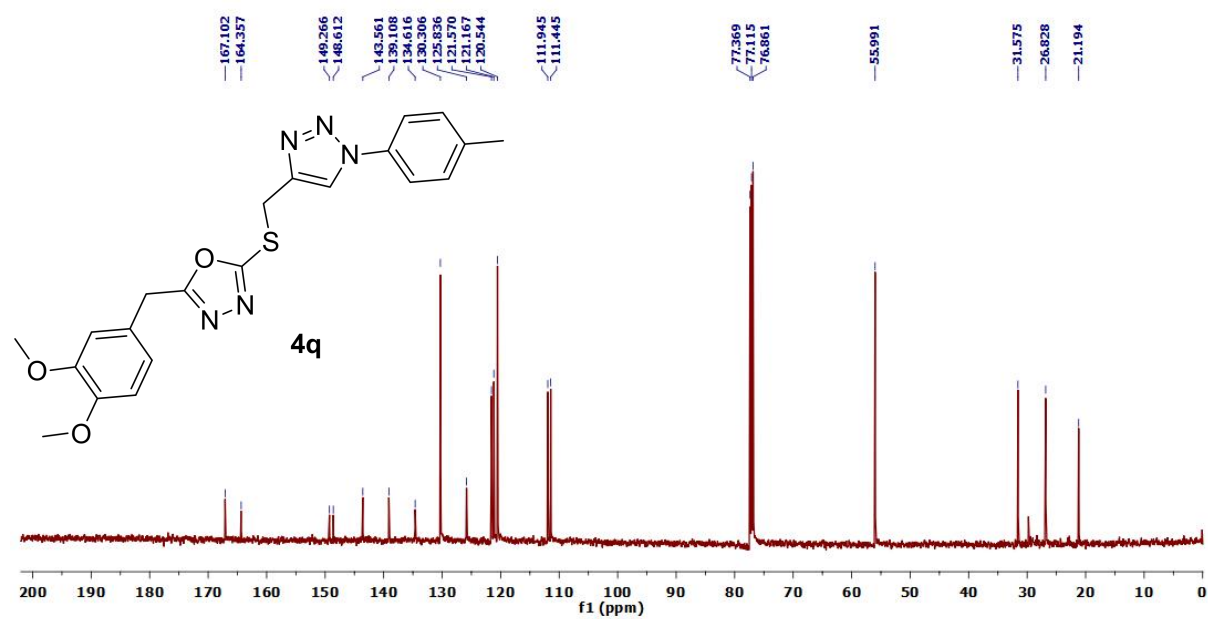
- Cell line: MCF-7 (2000 cells/per well (96-well plate))
- Treated time: 72hrs
- Assay: alamarBlue (4hrs incubated)
- Data: **4p**

Conc. (μM)	Viability	
	AVE.	± SD.
0	100.00	0.89
0.01	97.49	5.84
0.1	98.93	2.67
1	99.38	3.18
10	67.17	4.00
100	48.80	2.04

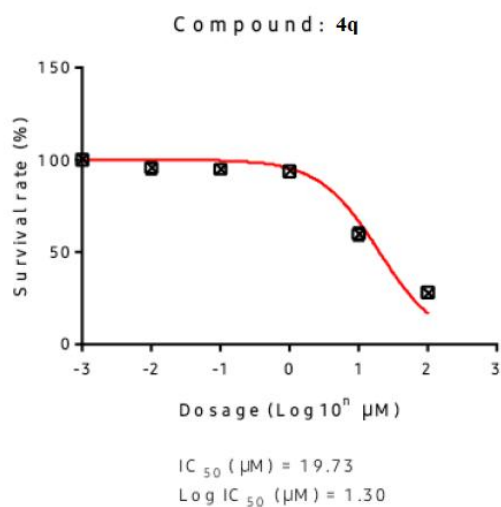
Cytotoxicity assay of **4p**



^1H NMR of **4q**



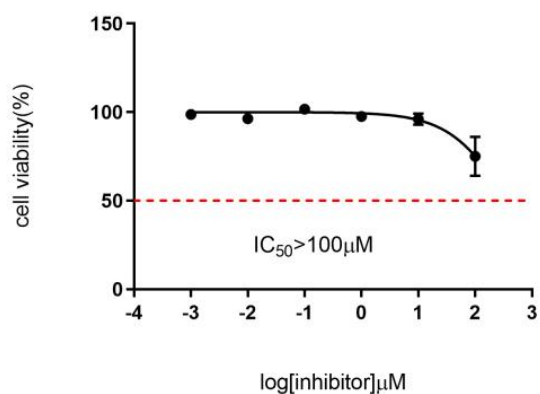
^{13}C NMR of **4q**



- Cell line: MCF-7 (2000 cells/per well⁹⁶-well plate)
- Treated time: 72hrs
- Assay: alamarBlue (4hrs incubated)
- Data: 4q

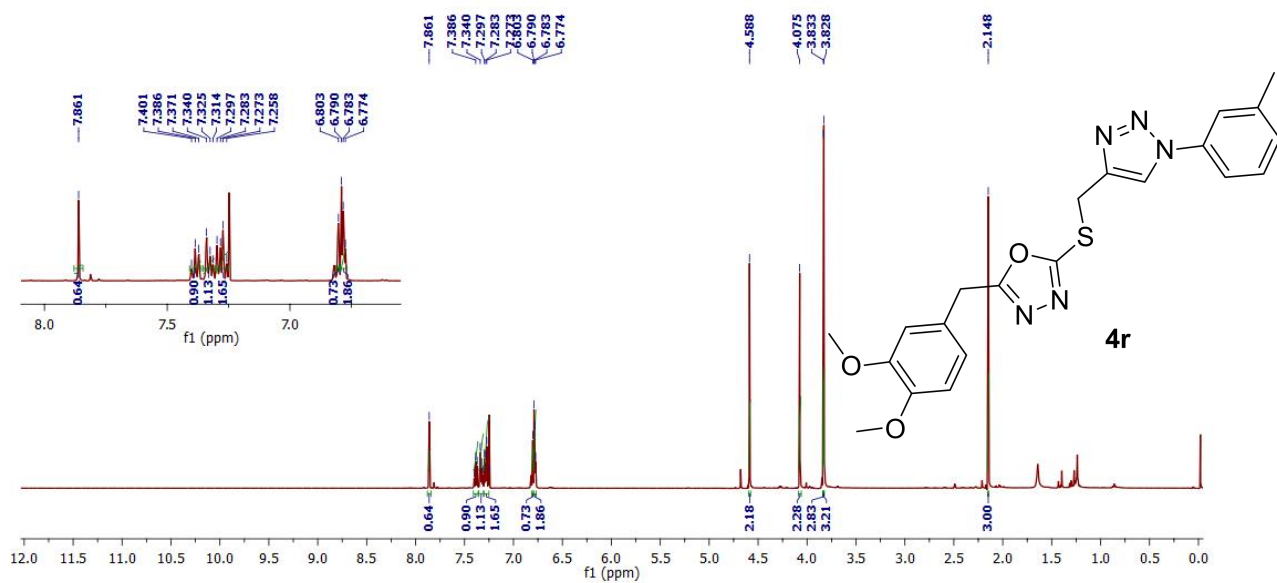
Conc. (μM)	Viability	
	AVE.	\pm SD.
0	100.00	0.89
0.01	95.57	3.08
0.1	94.87	1.45
1	93.72	1.29
10	59.71	3.40
100	27.94	0.01

Cytotoxicity assay of 4q

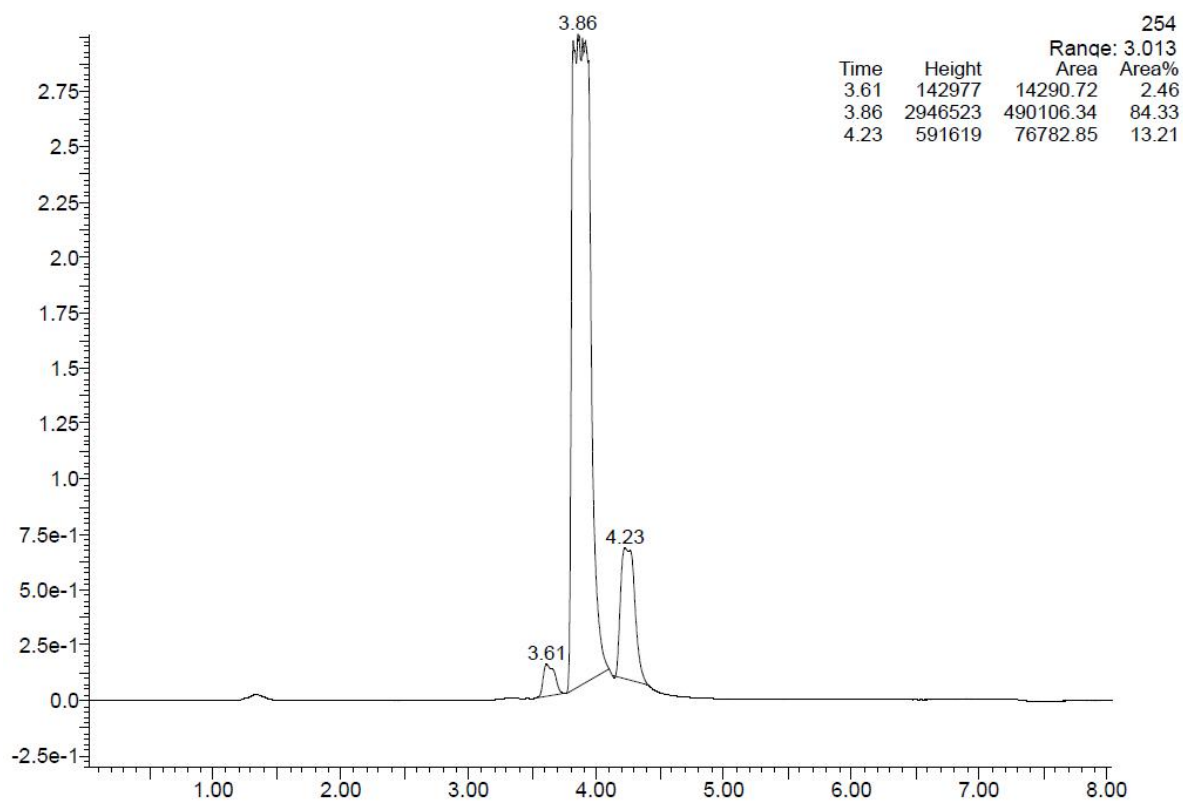


Conc.(μM)	Viability	
	AVE.	\pm SD
0	100.00	2.66
0.01	96.27	2.39
0.1	101.67	2.52
1	97.57	2.28
10	96.00	3.21
100	75.00	11.00

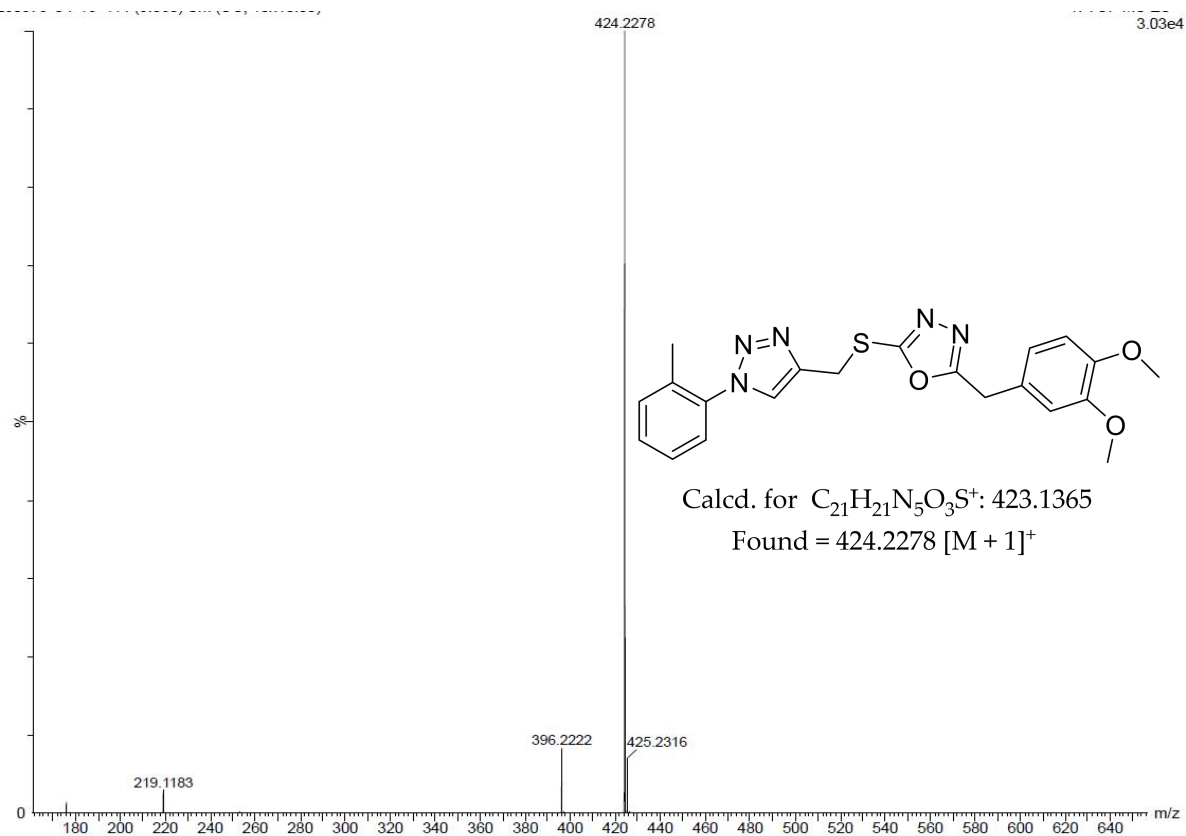
Cytotoxicity assay for the compound 4q (MCF-10A)



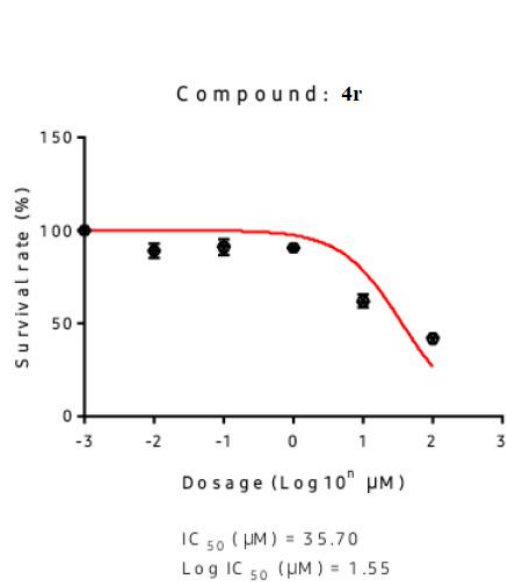
¹H NMR of 4r



Liquid chromatogram of 4r



Mass spectra of **4r**



- Cell line: MCF-7 (2000 cells/per well⁹⁶-well plate)
- Treated time: 72hrs
- Assay: alamarBlue (4hrs incubated)
- Data: **4r**

Conc. (μM)	Viability	
	AVE.	\pm SD.
0	100.00	0.89
0.01	89.10	4.09
0.1	90.93	4.21
1	90.67	1.19
10	61.89	3.54
100	41.66	1.56

Cytotoxicity assay of **4r**