

Supplementary Data

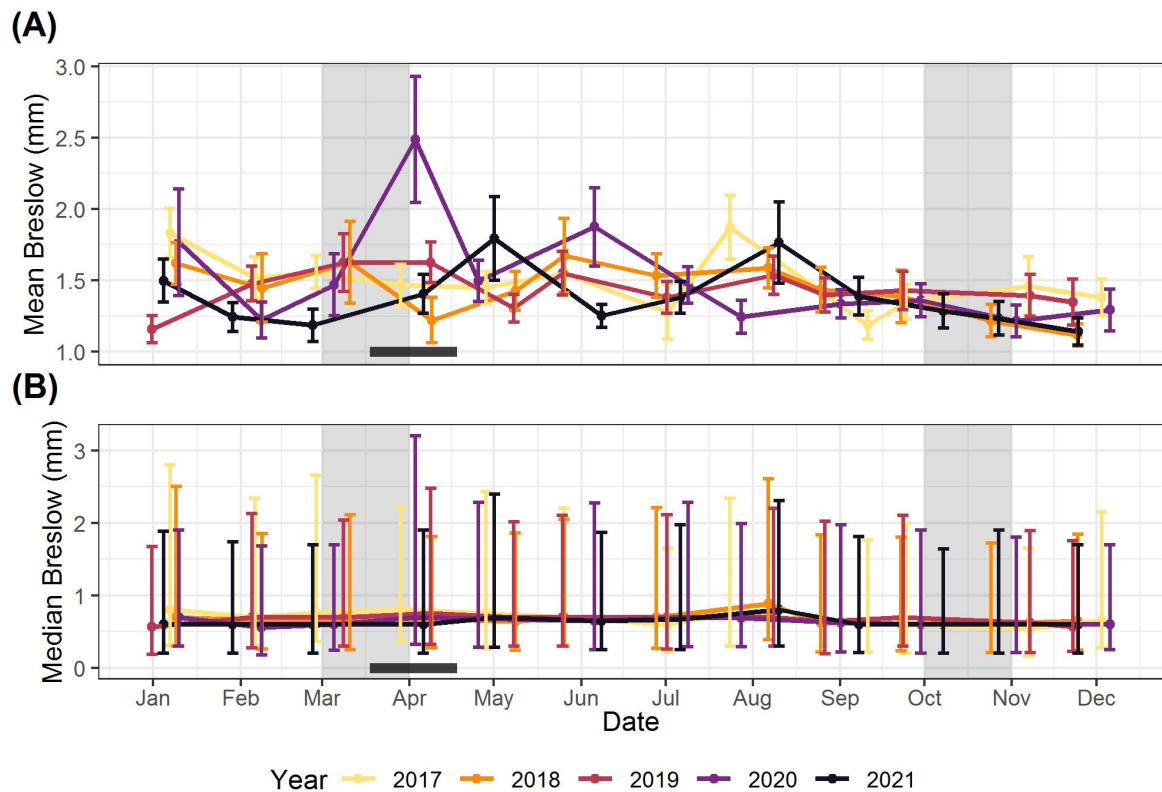


Figure S1. Evolution in monthly mean (a) and median (b) Breslow value for different registration years separately. 25th and 75th percentiles are shown with brackets. In (b) random jitter was added to x-axis values to improve clarity. The grey areas correspond to the periods in 2020 in which an exponential growth in the number of COVID-19 infections was observed; the bold black line corresponds to the period in 2020 in which the stringent lockdown took place.

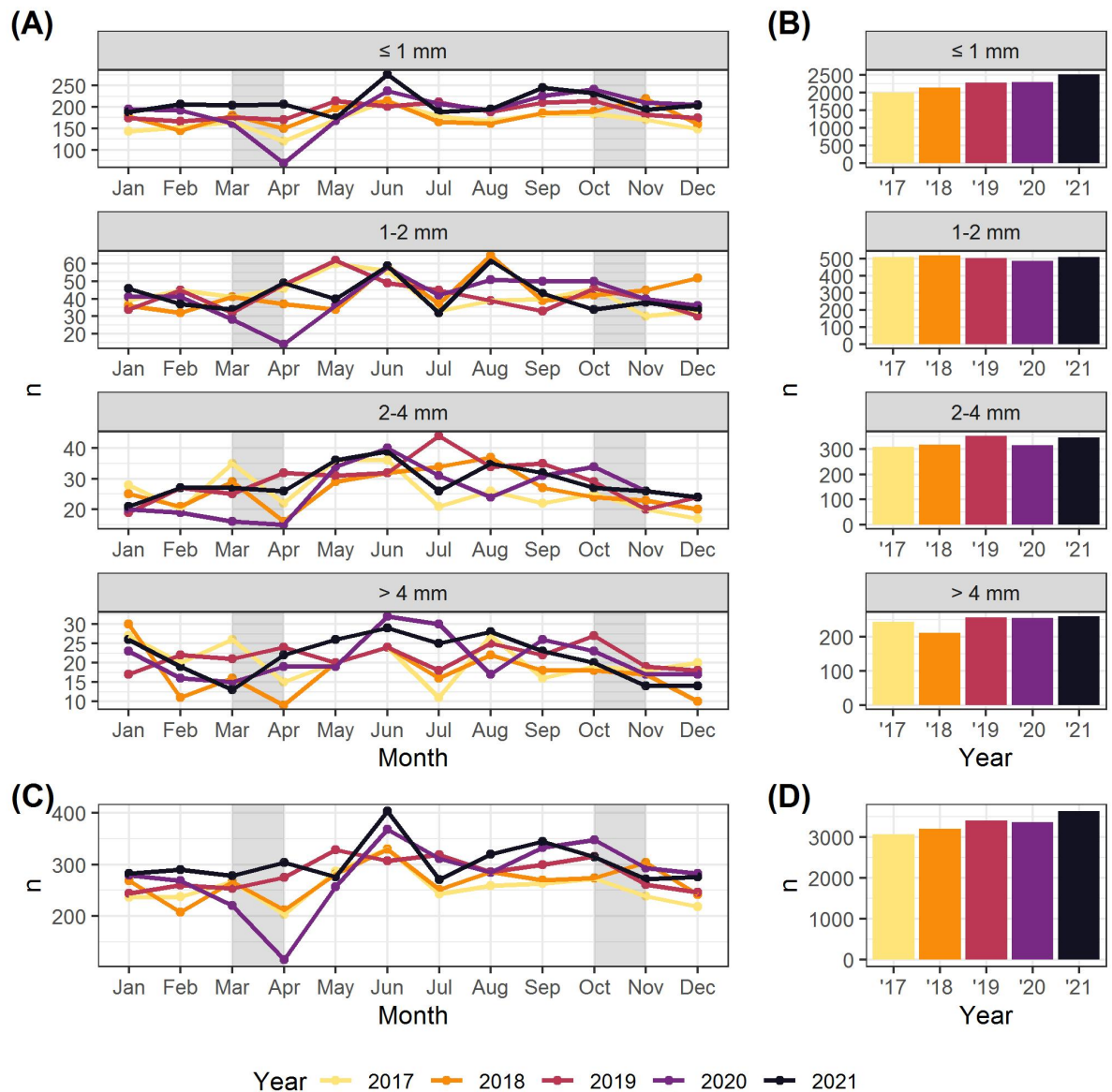


Figure S2. Evolution in monthly (A) and annual (B) number of melanoma diagnoses, broken down according to predefined Breslow groups ($[0,1]$, $[1,2]$, $[2,4]$, $[4,\infty]$). The grey areas correspond to the periods in 2020 in which an exponential growth in the number of COVID-19 infections was observed.

Table S1. Absolute and relative difference in number of cutaneous melanoma diagnoses compared to the previous year, by Breslow thickness.

	Breslow subgroup	2017	2018	2019	2020	2021
Absolute number of diagnoses	[0,1[1999	2147	2284	2307	2517
	[1,2[508	519	503	487	508
	[2,4[308	317	352	314	346
	[4, ∞[243	211	257	254	259
	Total	3058	3194	3396	3362	3630
Absolute difference in number of diagnoses compared to previous year	[0,1[n.a.	148	137	23	210
	[1,2[n.a.	11	-16	-16	21
	[2,4[n.a.	9	35	-38	32
	[4, ∞[n.a.	-32	46	-3	5
	Total	n.a.	136	202	-34	268
Relative difference in number of diagnoses compared to previous year	[0,1[n.a.	7.40	6.38	1.01	9.10
	[1,2[n.a.	2.17	-3.23	-3.18	4.31
	[2,4[n.a.	2.92	11.04	-10.80	10.19
	[4, ∞[n.a.	-13.17	21.80	-1.17	1.97
	Total	n.a.	4.45	6.32	-1.00	7.97