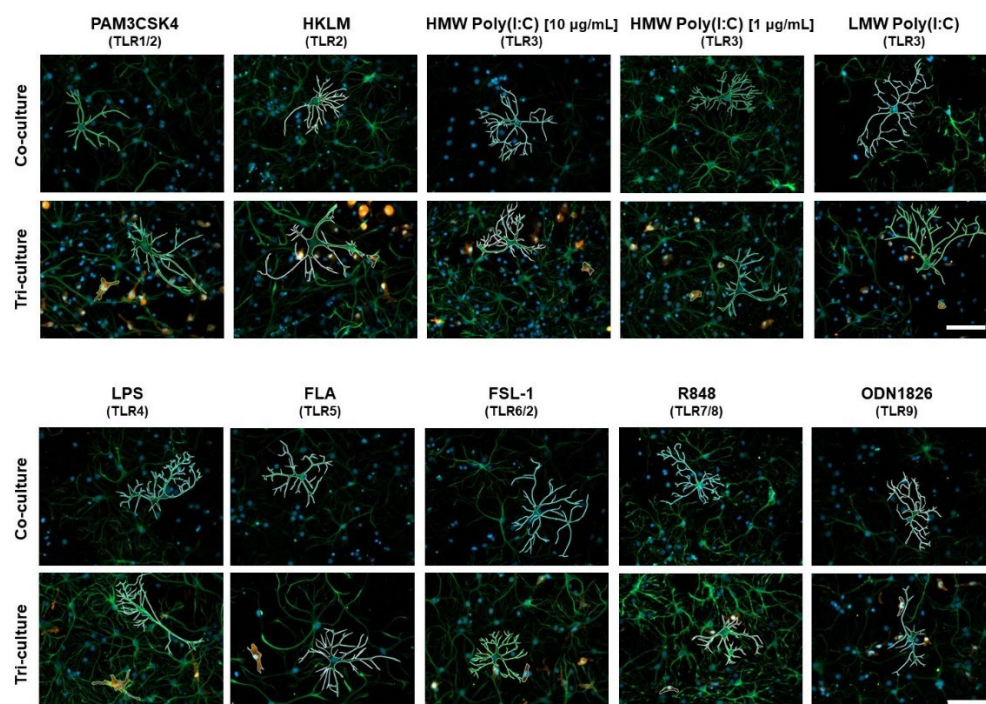
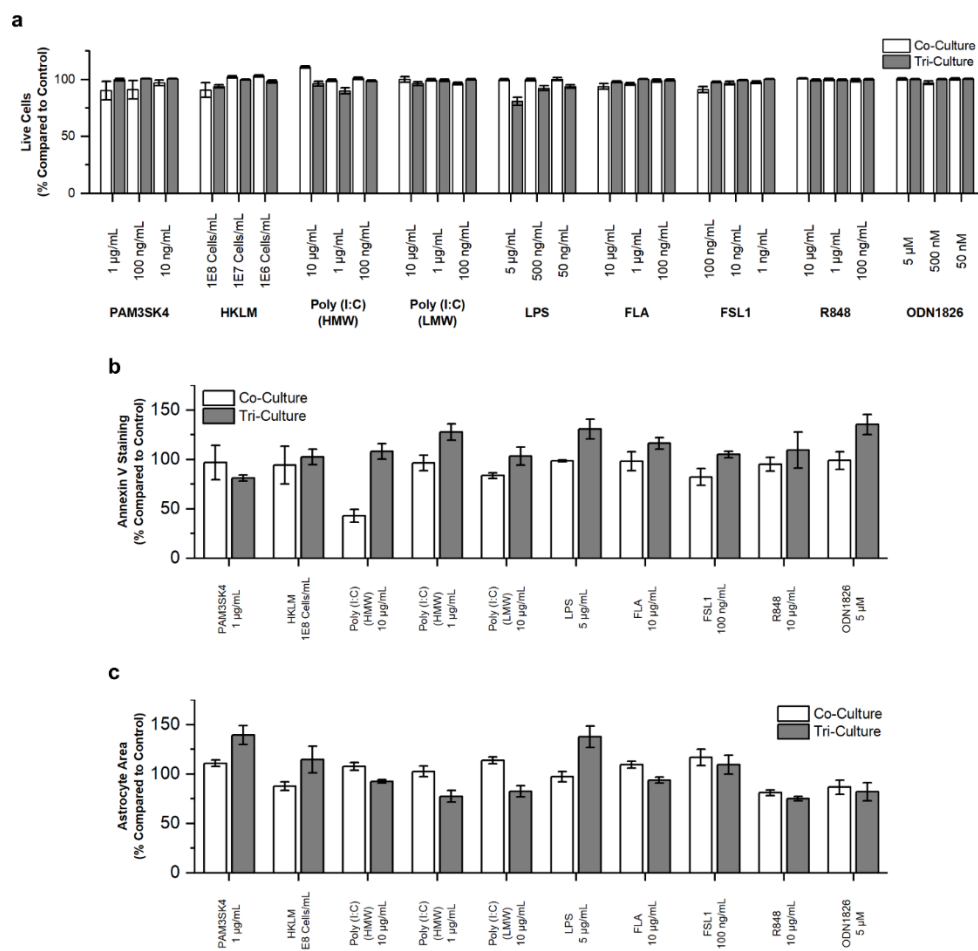


## Supplementary Material



**Figure S1.** Representative fluorescence images of glia morphology of all TLR agonist treatments showing the outlining method used to quantify glia area. The cultures were immunostained for the two glial cell types: astrocytes—anti-GFAP (green), microglia—anti-Iba1 (orange), and general nuclear stain DAPI (blue). Scale bar = 100  $\mu\text{m}$ .



**Figure S2.** Comparison of the change in the number of (a) live cells, (b) AnnexinV staining, and (c) astrocyte area between the co- and tri-cultures following TLR agonist treatment normalized to vehicle control.