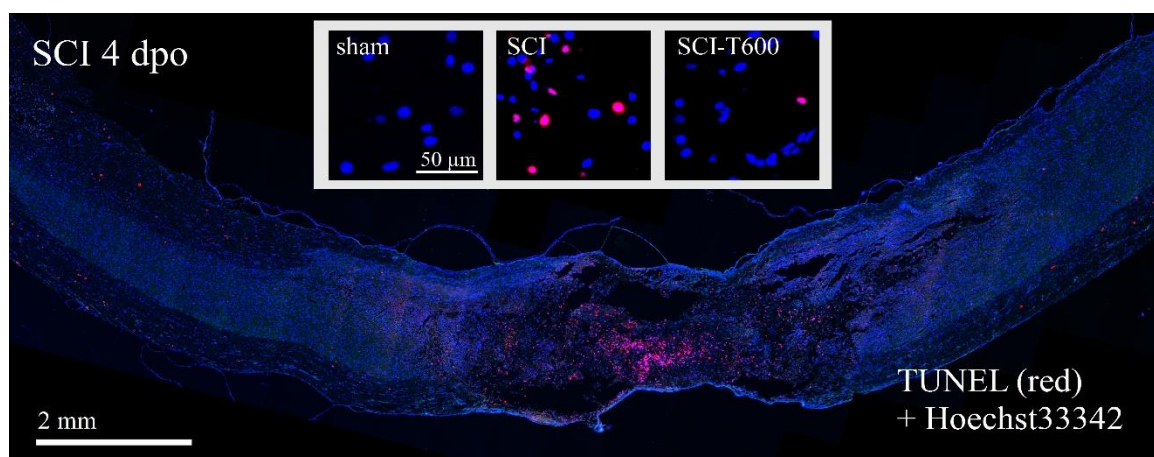


# Supplementary Materials

**Table S1.** Effect of SCI and TUDCA treatment on the expression of genes associated with microglial activation.

Gene	Expression; Mean, Normalized to 36B4			Dunnett's Post-Hoc Test	
	<u>laminectomy</u>	SCI, control	SCI-T600	Sham vs. SCI	SCI vs. SCI-T600
IL-6	$1.00 \times 10^{-3}$	$2.45 \times 10^{-3}$	$1.03 \times 10^{-3}$	$p < 0.001$	$p < 0.001$
IL-12 $\beta$	$5.98 \times 10^{-4}$	$3.33 \times 10^{-4}$	$7.06 \times 10^{-4}$	n.s.	n.s.
CCL-2	$0.44 \times 10^{-2}$	$3.33 \times 10^{-2}$	$1.84 \times 10^{-2}$	$p < 0.05$	n.s.
HMGB1	$0.195 \times 10^{-3}$	$0.449 \times 10^{-3}$	$0.081 \times 10^{-3}$	n.s.	$p < 0.05$
IFN $\beta$	$4.99 \times 10^{-4}$	$7.94 \times 10^{-4}$	$4.66 \times 10^{-4}$	n.s.	$p < 0.05$
PKM2	0.285	0.687	0.178	$p < 0.05$	$p < 0.001$
arg-1	$0.79 \times 10^{-2}$	$3.21 \times 10^{-2}$	$0.97 \times 10^{-2}$	$p < 0.01$	$p < 0.01$
IL-4R	$0.20 \times 10^{-2}$	$1.12 \times 10^{-2}$	$0.30 \times 10^{-2}$	$p < 0.01$	$p < 0.01$
IL-10	$3.49 \times 10^{-4}$	$0.74 \times 10^{-4}$	$1.91 \times 10^{-4}$	$p < 0.01$	n.s.



**Figure S1.** SCI-induced apoptosis as shown with TUNEL staining. Overview of a spinal cord section at 4 dpo with a high degree of apoptosis within the lesion center; magenta coloration indicates TUNEL fluorescence (red) of cell nuclei stained with Hoechst-33342 (blue). **Insets:** High magnification images of TUNEL staining at 4 mm distance from the lesion site after laminectomy (sham), SCI-control and SCI-T600.