

**Supplementary Table S1.** (a) Table of relative standard deviation of marker concentration in HNSCC patients, control subjects without infection with at least 2 samples per material (b) Table of the subgroup with head and neck infections ( $n=15$ ) and their diagnosis of infection at time of sample collection. Localization specified for the different types of infections. (c) R-packages used for statistical analysis and visualization.

Variable	TIMP-1 serum	TIMP-1 saliva	Hsp70 serum	Hsp70 saliva
Per Patient ( $n=29$ , $\geq 2$ samples)	21.9%	56.5%	88.5%	81.4%
HNSCC patients ( $n=52$ )	37.5%	68.5%	182.7%	142.2%
Subjects without infection ( $n=25$ )	19.8%	70.1%	123.5%	97.8%

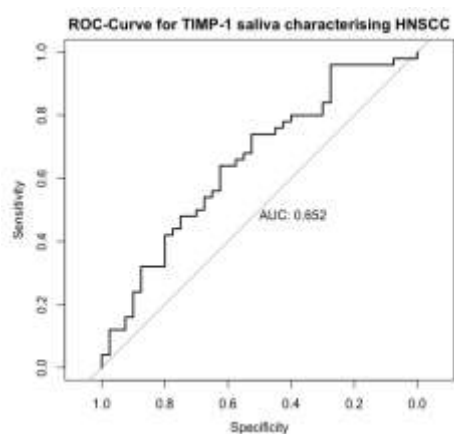
(a)

Diagnosis of subgroups with infections	localization	number = n
abscess	peritonsilliar, tongue, jaw ( $n=2$ )	4
purulent sialadenitis	salivary gland	1
erysipelas	temporal scalp	1
laryngitis	larynx	2
osteonecrosis	lower jaw ( $n=2$ )	2
cellulitis	orbital, base of the mouth	2
sinusitis	paranasal sinus	1
tonsillitis	tonsills	2

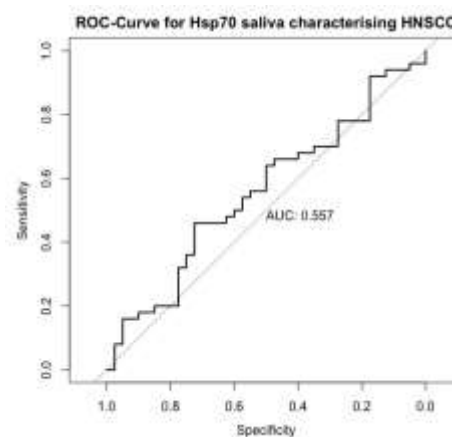
(b)

R-packages
datasets, car, pacman
tidyverse, dplyr
psych, survival, survminer
ggplot2, ggthemes, ggrepel, ggsignif, ggpubr
pROC, gridExtra, finalfit
gtsummary, devtools

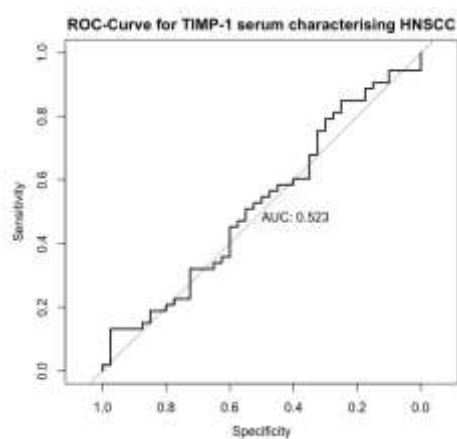
(c)



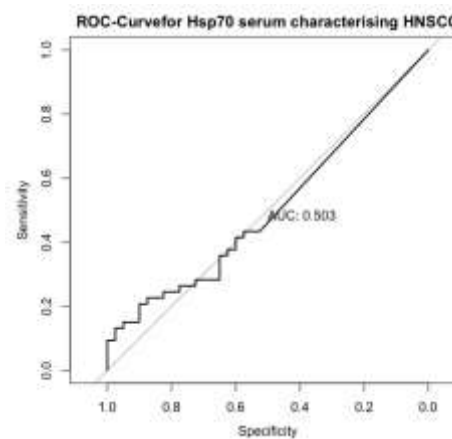
(a)



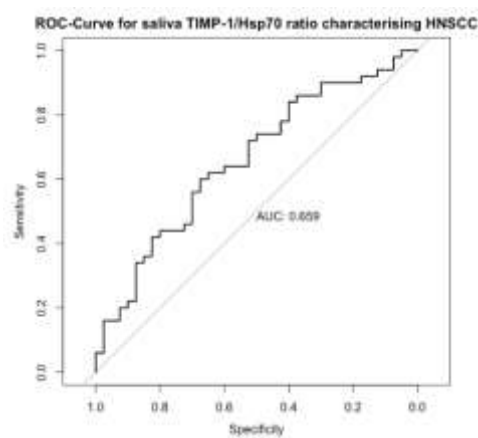
(b)



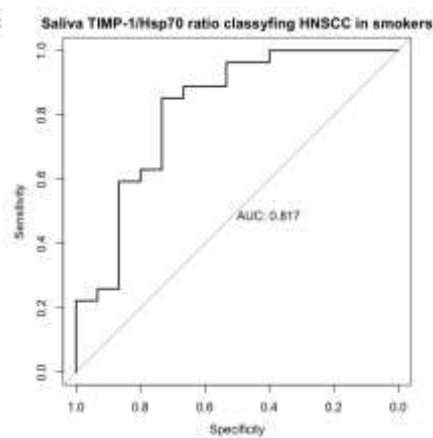
(b)



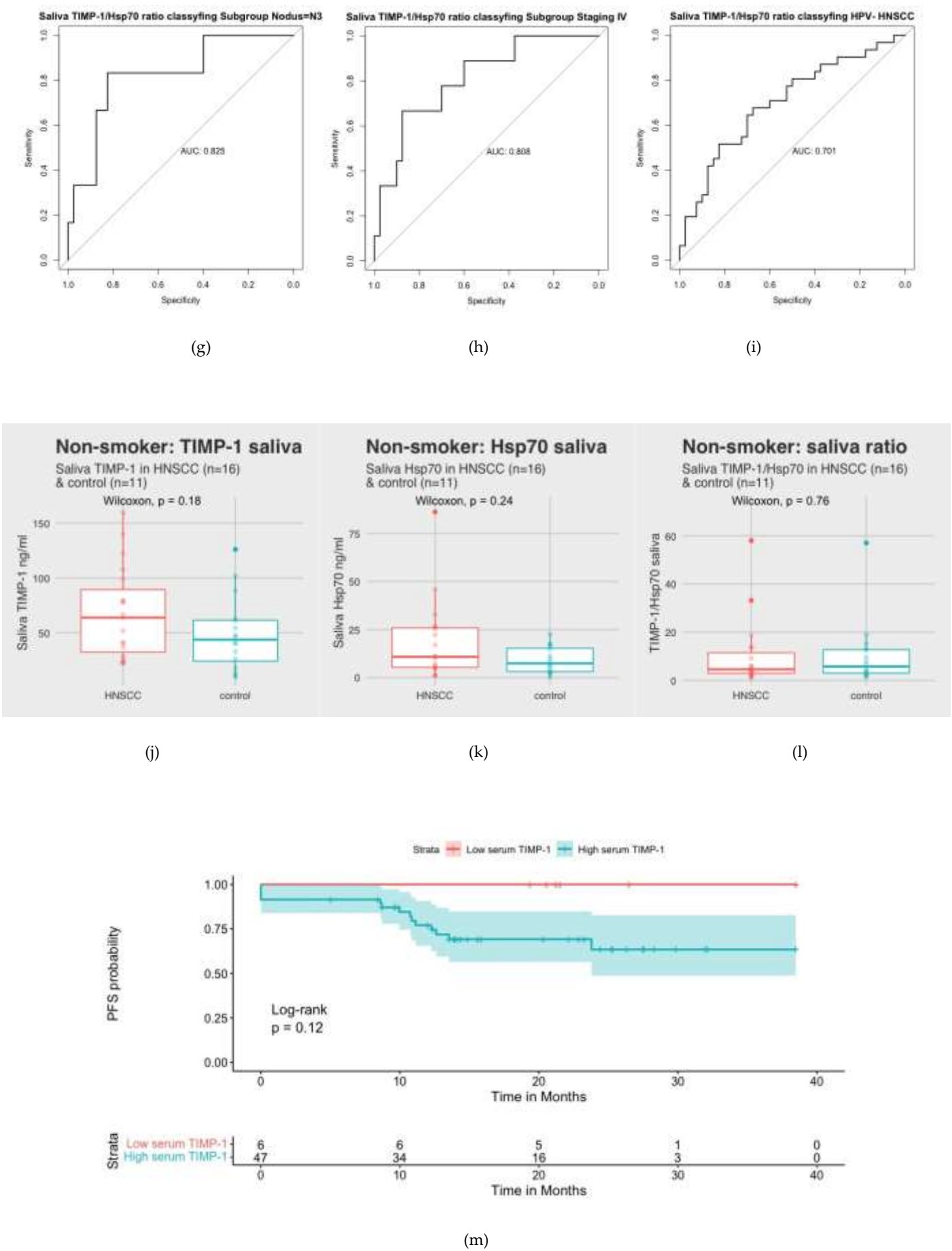
(d)

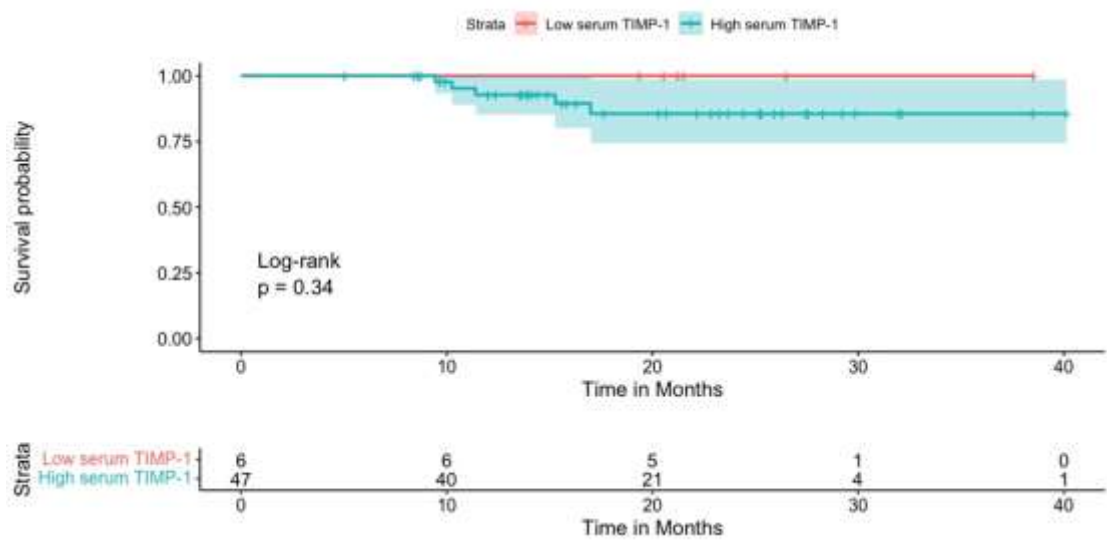


(e)

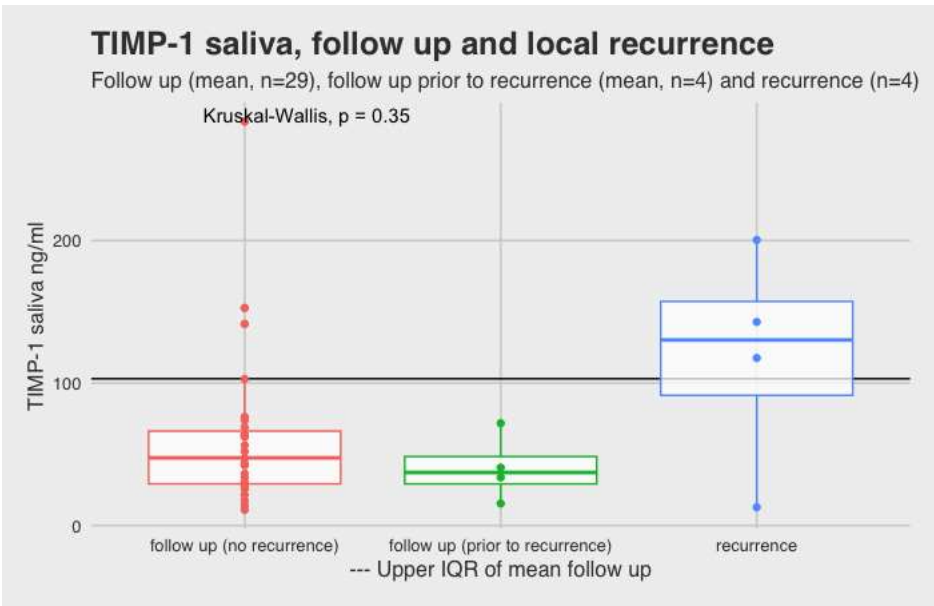


(f)

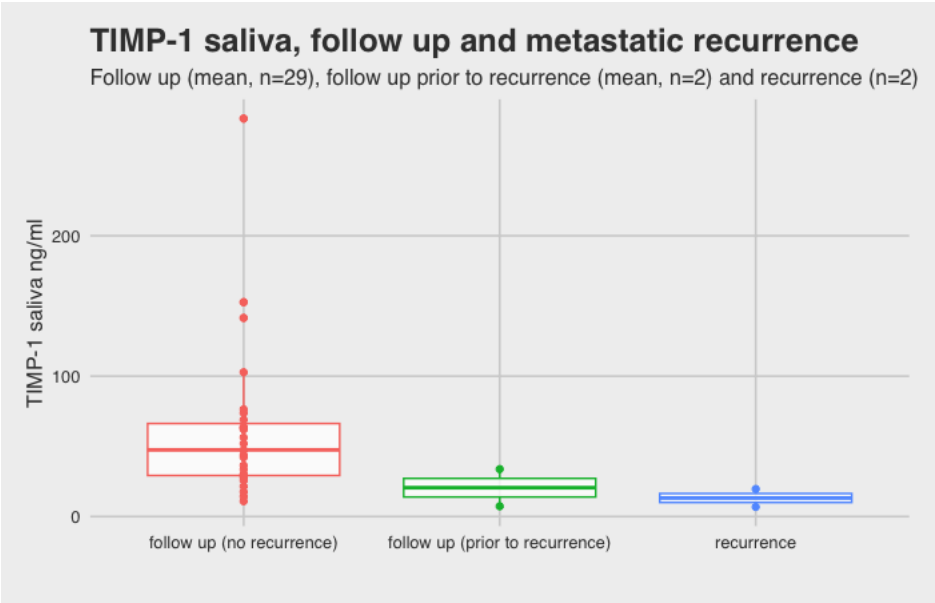




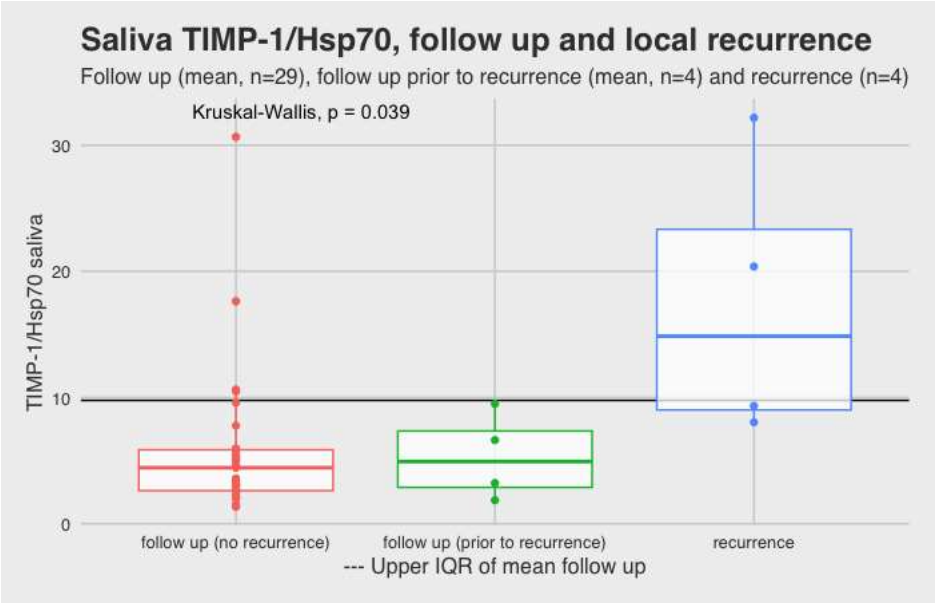
(n)



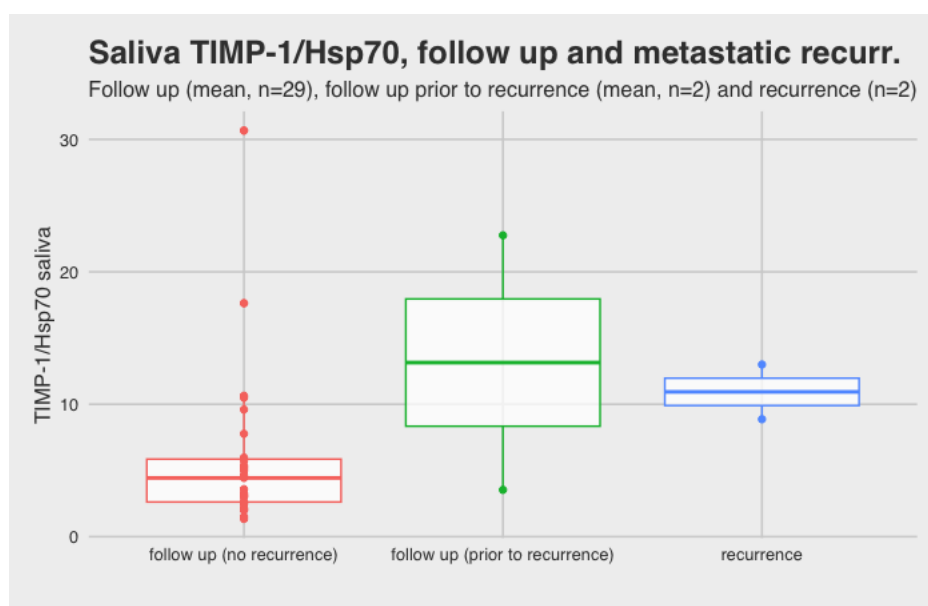
(o)



(p)



(q)



(r)



(s)

**Supplementary Figure S1.** (a) Receiver operator characteristic curve for saliva TIMP-1 classifying HNSCC patients ( $n=53$ ) and control subjects ( $n=40$ ), (b) Receiver operator characteristic curve for saliva Hsp70 classifying HNSCC patients ( $n=53$ ) and control subjects ( $n=40$ ), (c) Receiver operator characteristic curve for serum TIMP-1 classifying HNSCC patients ( $n=53$ ) and control subjects ( $n=40$ ), (d) Receiver operator characteristic curve for serum Hsp70 classifying HNSCC patients ( $n=53$ ) and control subjects ( $n=40$ ), (e) Receiver operator characteristic curve for TIMP-1/Hsp70 saliva ratio classifying HNSCC patients ( $n=53$ ) and control subjects ( $n=40$ ), (f) Receiver operator characteristic curve for TIMP-1/Hsp70 saliva ratio classifying HNSCC patients in smoker subgroup with smokers with HNSCC ( $n=28$ ) & smokers control ( $n=15$ ) (g) Receiver operator characteristic curve for TIMP-1/Hsp70 saliva ratio classifying HNSCC patients in a subgroup with Nodus state N3 ( $n=6$ ) & control ( $n=40$ ), (h) Receiver operator characteristic curve for TIMP-1/Hsp70 saliva ratio classifying HNSCC patients in a subgroup with UICC Stage IV ( $n=6$ ) & control ( $n=40$ ), (i)

Receiver operator characteristic curve for TIMP-1/Hsp70 saliva ratio classifying HNSCC patients in a subgroup with HPV negative ( $n=34$ ) & control ( $n=40$ ), (j) Saliva ratio TIMP-1 in non-smoking subjects, comparing HNSCC and the combined control group, (k) Saliva ratio Hsp70 in non-smoking subjects, comparing HNSCC and the combined control group, (l) Saliva ratio TIMP-1/Hsp70 in non-smoking subjects, comparing HNSCC and the combined control group, (m) PFS probability for TIMP-1 concentration above (high) and below (low) cut off value 196ng/ml, (n) OS probability for TIMP-1 concentration above (high) and below (low) cut off value 196ng/ml, (o) Saliva TIMP-1 concentration mean during follow up, follow up before local recurrence and concentration at diagnosis of local recurrence, (p) Saliva TIMP-1/Hsp70 ratio mean during follow up, follow up before local recurrence and at diagnosis of local recurrence, (q) Saliva TIMP-1/Hsp70 ratio mean during follow up, follow up before metastatic recurrence and concentration at diagnosis of metastatic recurrence, (r) Saliva TIMP-1/Hsp70 ratio mean in follow up, follow up before metastatic recurrence and concentration at diagnosis of metastatic recurrence, (s) TIMP-1/Hsp70 saliva ratio mean during follow up and mean six months prior to recurrence