

Figure S1. The FE-SEM image of the CNTs.

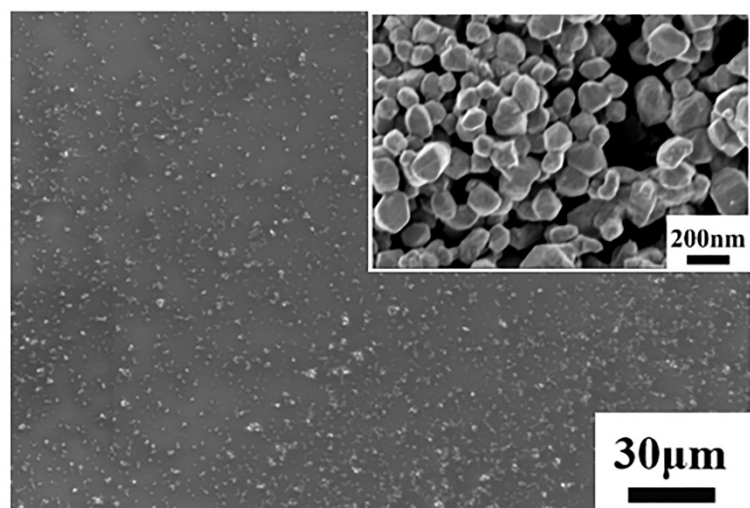


Figure S2. FE-SEM image of Pd@VO₂ and the inset shows FE-SEM image at high magnification.

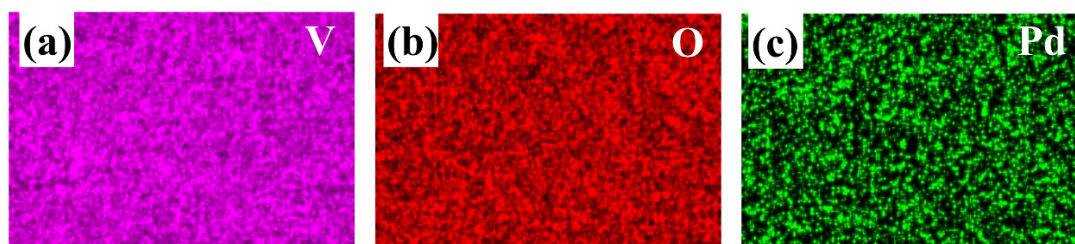


Figure S3. The EDS mapping of elements (a) V, (b) O and (c) Pd.

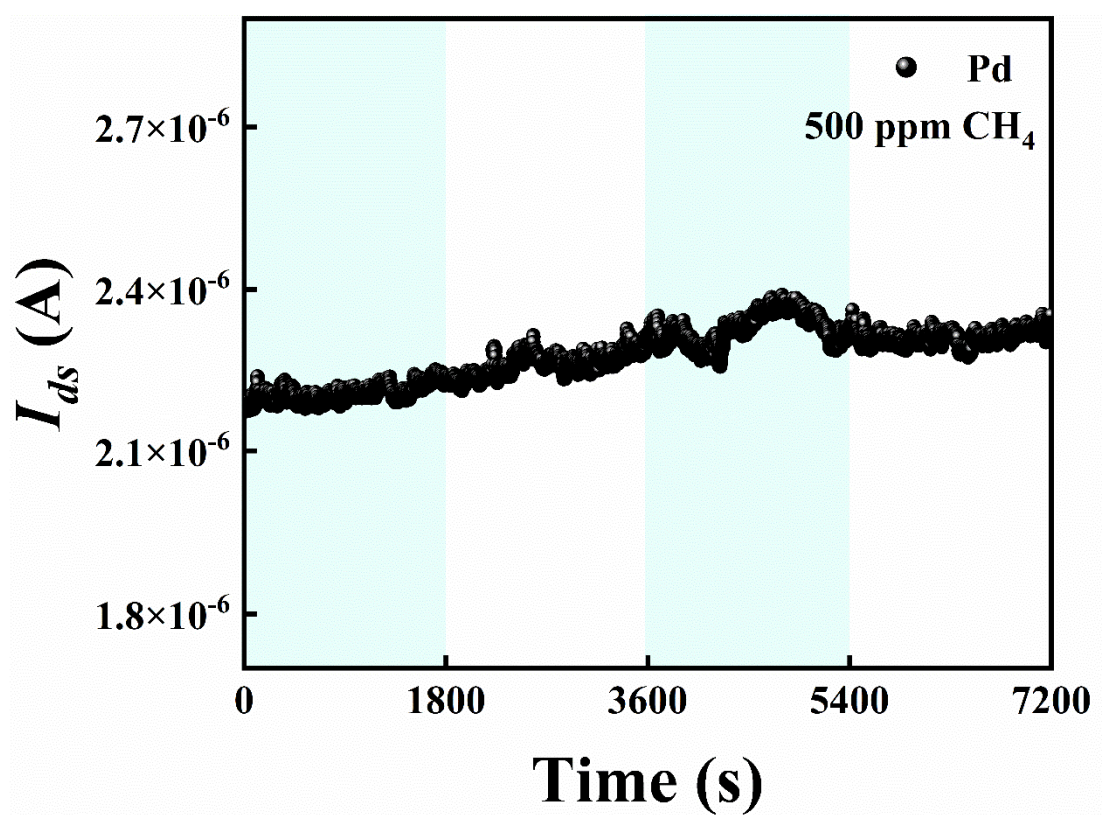


Figure S4. Two-cycle test of Pd-modified CNTs sensor for 500 ppm methane at room temperature.