

Article

The Gibbons, Ross, and Shanken Test for Portfolio Efficiency: A Note Based on Its Trigonometric Properties

Pankaj Aggrawal 

Maine Business School, University of Maine, Orono, ME 04469, USA; pankaj.aggrawal@maine.edu

Abstract: This study is intended as a note and provides an extension to a much-used and established test for portfolio efficiency, the Gibbons, Ross, and Shanken GRS-Wald test. Tests devised to measure portfolio efficiency are crucial to the theoretical issues related to CAPM (Capital Asset Pricing Model) testing and have applications for the fund manager who seeks to rank portfolio performance. This study looks at the GRS-Wald test for portfolio efficiency and extends it to make it visually more interpretive without any loss of generality in its structure. The geometrically recast statistic draws upon the trigonometric properties of a portfolio in the mean-variance space and a mathematical proof of the equivalence of the two statistics is provided. The GRS-Wald test is a widely used statistic in studies addressing the issue of portfolio efficiency and CAPM deviations. A simulation demonstrates the use of the recast GRS-Wald test in testing for the mean-variance efficiency of a test portfolio. The study also provides a table of the GRS-Wald test, based on a range of mean-variance locations (cosine of portfolio angles) at which the test portfolio and the efficient market portfolio can be placed.

Keywords: GRS-Wald test; GRS statistic; trigonometric test; geometric portfolio efficiency; CAPM; minimum-variance simulation; tangency portfolios; mean-variance optimization

MSC: 91-08; 91-10

Citation: Aggrawal, P. The Gibbons, Ross, and Shanken Test for Portfolio Efficiency: A Note Based on Its Trigonometric Properties.

Mathematics **2023**, *11*, 2198. <https://doi.org/10.3390/math11092198>

Academic Editor: Andrea Scozzari

Received: 10 April 2023

Revised: 29 April 2023

Accepted: 2 May 2023

Published: 6 May 2023



Copyright: © 2023 by the author. Licensee MDPI, Basel, Switzerland. This article is an open access article distributed under the terms and conditions of the Creative Commons Attribution (CC BY) license (<https://creativecommons.org/licenses/by/4.0/>).

1. Introduction

The GRS-Wald test statistic, Gibbons, Ross, and Shanken [1] (hereinafter the GRS-W test or the GRS-test, or the GRS-statistic), is a widely used statistic to test for portfolio efficiency. This study is a note and provides an extension to the GRS test, which is also used to study the CAPM (Capital Asset Pricing Model) deviations (Galea, Curci, and Molina [2]; Fama and French [3]). The test is recast in a form that is visually more intuitive (geometrically), while maintaining its original structure. At the same time, the recast statistic does not suffer from any loss of generality or rigor in its structure. The recast statistic draws upon the trigonometric properties (Gustafson [4,5], Rodriguez [6]) of a portfolio in the mean-variance space, and a mathematical proof of the equivalence of the two statistics is provided. A simulation is also employed to demonstrate the use of the recast GRS statistic in testing for the mean-variance efficiency of a test portfolio, and a table of values, based on a range of angles, spanning the various points on the mean-variance spectrum is presented (Appendix A.3). The GRS-W test is a multivariate statistic for testing the mean-variance efficiency of a portfolio, it also has a geometric interpretation. The statistic tests for the efficiency of proxies used for the market portfolio and enables them to address issues related to the critique by Roll [7] regarding the validity of the empirical testing procedures on the CAPM (Capital Asset Pricing Model, Chen [8]. Testing for the efficiency of the proxies used is important because, “if the proxy is not a valid surrogate, then as tests of the CAPM the existing empirical investigations are somewhat beside the point” (Gibbons, Ross, and Shanken [1]). Hu et al. [9] solved the portfolio optimization problem of the mean-variance model (as used in the GRS-test) by developing an interactive multi-criterion, self-learning system that does not require an a priori assumption of the agent’s utility preference structure.

2. The Gibbons, Ross, and Shanken Test Statistic and Its Relevance

Bodnar and Schmid [10] speak of the GRS test as an exact F -test for the efficiency of a given portfolio which has become a fundamental test in portfolio theory. Cueto, Grané, and Caascos [11], deploy the GRS test to assess the ability of a multifactorial risk model to explain excess returns, by determining if the regression intercepts are jointly zero, $\alpha_1 = \alpha_2 = \dots = \alpha_n = 0$. Ryan et al. [12], utilizing the GRS-test, look at the average value of absolute intercepts, $\alpha_i = 0$ to test whether the regression intercepts are jointly equal to zero, with the idea being that the intercept is indistinguishable from zero if an asset pricing model completely captures the expected returns (in which case the portfolio is efficient). Suarez and Alonso-Conde [13] looked at an entropy-based decomposition that captures the divergence between the factor-mimicking portfolio and the minimum-variance pricing kernel as distinct from quadratic test statistics, such as the GRS-test (determined as a function of pricing errors). Solórzano-Taborga et al. [14], utilize the GRS test for identifying restrictions (they termed ‘efficiency factor’) to test the null of asset pricing errors equaling zero. Barillas et al. [15] utilized the GRS test to accommodate the comparison of non-nested models as in a squared Sharpe-ratio (Sharpe [16]). Kamstra and Shi [17] rigorously generalized the Sharpe ratio-based interpretation of the GRS test to the multiple portfolio case but also suggested modifications to it when extended to multiple factors.

It may be noted that the GRS test does not accommodate short-selling restrictions (Fletcher [18]). Vigo-Pereira and Laurini [19] stated that for the GRS test to be effective the error terms have to be i.i.d $N(0,1)$, normally distributed $\sim N(\mu, \sigma^2)$; $f(x) = \frac{1}{\sigma\sqrt{2\pi}}e^{-\frac{1}{2}(\frac{x-\mu}{\sigma})^2}$, homoscedastic with the diagonal elements jj and kk of two var-cov matrices A and B being equal, $\sum_A jj = \sum_B kk$, $\forall j = k$, and uncorrelated $\rho(\epsilon_j, \epsilon_k) = 0$. Kamstra and Shi [17] asserted that the GRS statistic can lead to higher failure rates especially when the returned model has K -factors, $K > 1$ and N -assets, $N < N^*$; “the bias to over-reject is non-negligible in small samples”. The short-selling constraint prevents the replication of an investible benchmark index, thus invoking Roll’s Critique [7] of whether the benchmark is representative of the test portfolio. However, tests of mean-variance efficiency with no short sales constraints have been proposed by Basak et al. [20]. Kim and Robinson [21] also point out that perfect efficiency cannot exist in practice and that it would be unrealistic that all intercept values were jointly and exactly zero, hence they introduce an interval-based hypothesis testing and get lower rejection rates with the GRS-test.

Shanken [22] provided an exhaustive review of 23 statistical methods that have been used in testing mean-variance portfolio efficiency. Kamstra and Shi [17] posited that “the Gibbons, Ross, and Shanken ([1], GRS) test of mean-variance efficiency of asset returns is the gold standard of empirical asset pricing, used by virtually every paper in the literature exploring empirical asset pricing models. Not only is it used to establish if an asset pricing model can account for expected returns of a set of test assets, but the GRS test is also used to rank models for relatively superior performance, that is, which model produces the lower GRS statistic (see, for instance, Fama and French [3])”. Essentially, this is done by testing for the intercepts on a multifactor risk model to be jointly zero, indicating that there is no excess return to the factor loadings. Cueto et al. [11], deploy the GRS test to assess the ability of a multifactorial risk model to explain excess returns, by determining if the regression intercepts are jointly zero, $\alpha_1 = \alpha_2 = \dots = \alpha_n = 0$. Ryan et al. [12], utilizing the GRS test, looked at the average value of absolute intercepts, $\alpha_i = 0$ to test whether the regression intercepts are jointly equal to zero, with the idea being that the intercept is indistinguishable from zero if an asset pricing model completely captures the expected returns (in which case the portfolio is efficient). It can be surmised that there is a substantive link between the GRS test, and portfolio performance evaluation and that it has been well-researched. This paper abstracts from those empirical tests and seeks to provide a trigonometric interpretation of the GRS test.

MacKinlay [23] discriminated between the risk-based and the non-risk-based explanations of CAPM deviations and indicates that models that base their explanations on the need for additional risk factors may be making premature conclusions (Roll and Ross [24]).

He further adds that on an ex ante basis, “CAPM deviations due to missing risk factors will be very difficult to statistically detect”. The main point of his study is that the adoption of empirically developed multifactor models is not the answer to observed CAPM deviations. His study utilized the GRS test to detect CAPM deviations on an ex ante basis. Using a 342-month time series of excess returns for 32 portfolios (25 stock and 7 bond portfolios) as the dependent variable, with market excess returns being the independent variable, he tested for the null hypothesis that the intercept on the CAPM is zero. He finds that on an ex ante basis, it is more probable that the deviations are better explained by non-risk-based alternatives than by additional risk-based alternatives. This is inferred from the degree of overlap the alternative distributions have over the GRS-test statistic MacKinlay [23]. For purposes of comparing a risk-based model with a non-risk-based alternative, MacKinlay [23] stated, “the zero-intercept test can be very useful since the distributions of the test statistic for these alternatives have little overlap”.

Zhou [25] stated, “the GRS test has rich economic interpretations and attractive statistical properties . . . the GRS test is fundamental for testing MV (mean-variance) efficiency under normality.” He uses the statistic and rejects the MV efficiency on the CRSP (Center for Research in Security Prices, WRDS [26]; Agrawal [27]) value-weighted stock index for three of the six consecutive ten-year sub-periods from 1926 to 1986 besides rejecting the normality assumption of the data at the same time. Zhou [25] conducts the zero-intercept test on the CAPM under the normality as well as the alternative (elliptical) distribution assumption and uses the values of the GRS statistic to calculate the p -values (level of significance). Bodnar et al. [28] also mentioned that Zhou [25] extended the findings of Gibbons et al. [1] by applying their GRS test of the validity of the CAPM to elliptically distributed returns. For the alternative distributions of excess returns, he reported that the p -values for five of the six sub-periods from 1926–1976 exceed 5% and are larger than the p -values under the normality assumption (Table V, Panel B, p. 1938, Zhou [25]). This prevents the rejection of the null hypothesis (zero-intercept on the excess return form of the CAPM) for the period under study. The Zhou [25] paper thus introduces a refinement to the GRS-test by way of testing the implications of the GRS-test to alternative distributions and cautions that “empirical studies that ignore the nonnormality are likely to over reject the theory being tested”. At the same time, it brings out the appeal of the GRS test to situations that call for the testing of portfolios.

The Fama and French [29] study used 32 portfolios over 342 monthly observations to arrive at the GRS-test F -value of 1.91 (for the single factor case with excess market returns as the sole independent factor). The study rejects the null of a zero-intercept at the 99.6% level (Fama and French [29]). Their lowest F -statistic (closer to zero, implying higher efficiency) has a value of 1.56 and rejects the null at the 96.1% level; in this case, their model is the three-factor stock market model. Despite its ‘marginal rejection’ in the F -tests, they feel “the three-factor model does a good job on the cross-section of stock returns”. The five-factor (3 stock and 2 bond market) model has an F -value of 1.66 and rejects the null at the 97.5% level, which is lower than the three other scenarios. This prompts them to conclude that “the five-factor regressions provide the best model for returns on bonds and stocks”. A look at the p -values for the overall regressions clearly shows that the null of a zero-intercept is rejected at least at the 96.1% level (which is the lowest on the table referred to above). Evidently, the Fama and French [29] study makes a strong case for multi-factor risk-based alternates to the univariate proposition of the CAPM. Hou, Karolyi, and Kho [30] used the GRS-test statistic for their country, industry, and characteristic-based global test portfolios. Ehsani and Linnainmaa [31] utilized the GRS test to see if factor momentum contributes to the returns of cross-sectional momentum strategies and test the null hypothesis of the alphas being jointly zero. This note provides an extension/recharacterization of the GRS test with the objective of giving it a geometrical interpretation and making its implementation easier.

3. Suggested Recharacterization of the GRS-Statistic

Gibbons, Ross, and Shanken [1] devised a statistic to test for the MV efficiency of any particular portfolio. Their motivation was to examine the MV efficiency of market proxies used in CAPM testing, especially given the equivalence of the CAPM to MV efficiency of the market. They derived an exact form test and examined its sensitivity to the choice of the portfolio and the number of assets used to derive the MV efficiency frontier (Merton [32]). They found that “conclusions regarding the efficiency of a given index can be altered by the type of assets used to construct the ex post frontier”. Their tests reject the efficiency of the CRSP value-weighted (VW) index but do not reject the efficiency of the CRSP equal-weighted (EW) index, and utilized monthly data over the period from 1931–1965. They also provided a geometrical (Gomez-Deniz et al. [33]; Danko and Soltés [34]) interpretation of their test in “the mean-standard deviation space of portfolio theory”, something that this study attempted to extend.

The GRS statistic measures the distance, in mean-standard deviation space, between a test portfolio (market index), and a tangency portfolio (on the efficient frontier) and returns a value, which is then used to assess the relative efficiency of the portfolio under consideration. The GRS test statistic, also called the GRS-W, statistic is as follows:

$$W = \left[\frac{\sqrt{1 + \hat{\theta}_*^2}}{\sqrt{1 + \hat{\theta}_p^2}} \right]^2 - 1 \equiv \Psi^2 - 1 \quad (1)$$

and $\hat{\theta}_*$ is the Sharpe measure of the ex post efficient portfolio (ratio of expected excess return to the standard deviation of the excess return), and $\hat{\theta}_p$ is the Sharpe measure of the test portfolio. Note that Ψ cannot be less than one since $\hat{\theta}_*$ is the slope of the ex post frontier and is based on all the assets in the test (including the test portfolio p). To accept the efficiency of the test portfolio, Ψ^2 should be close to 1. Larger numerical values of Ψ^2 imply portfolio inefficiency (MacKinlay et al. [35]) arising out of the increased distance between the test portfolio and the global MV efficient portfolio on the frontier ($W = \Psi^2 - 1 \rightarrow 0$ implies efficiency). In other words, for values of W close to zero, the test portfolio cannot be called inefficient.

The null hypotheses of a zero intercept on the excess-return form of the CAPM can be rejected when the value of W is greater than the F -statistic value with degrees of freedom N and $(T-N-1)$, where N is the number of assets and T is the number of time series observations on the underlying asset returns.

It may be noticed that the above statistic involves the prior calculation of the slopes of the tangent to the efficient frontier and the segment joining the test portfolio to the origin. Additionally, θ is a slope measure ($\theta \equiv \bar{r}/\sigma$) with excess return (\bar{r}) and standard deviation of return (σ). The simplification of this approach involves the direct use of the angles stretched by the two lines, and could perhaps aid in a more visually intuitive use of the GRS test statistic. The suggested modification on the original form of the GRS statistic is as follows.

Let ϕ^* be the angle between tangent OM and the X-axis (Figure 1), and ϕ_p be the angle between the segment OP and the X-axis.

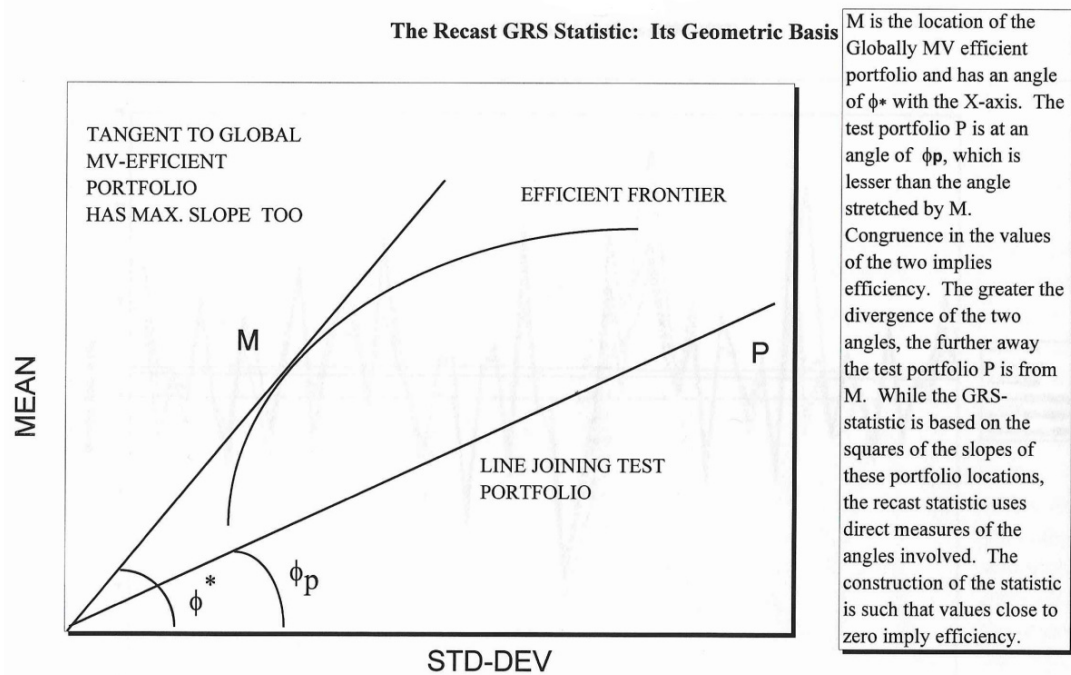


Figure 1. The geometric basis of the GRS-W test statistic. The test coordinates of the EW portfolio (P) and the tangency portfolio (M) are plotted relative to the mean-variance efficient frontier. The further away P is from the tangency portfolio, the less efficient the portfolio P is.

Then, we can recast the GRS-W statistic as \tilde{W} , where:

$$\tilde{W} = \left[\frac{\cos \phi_p}{\cos \phi^*} \right]^2 - 1 \quad (2)$$

If $\tilde{W} = \Psi^2 - 1 \rightarrow 0$, we cannot reject H_0 (which indicates that the test portfolio P is efficient), and ϕ^* is the angle between the tangency portfolio and the X-axis:

$$\left[\frac{\sec \phi^*}{\sec \phi_p} \right]^2 - 1 \quad (3)$$

and ϕ_p is the angle between the test portfolio and the X-axis,

$$\begin{aligned} & \left[\frac{\sqrt{\sec^2 \phi^*}}{\sqrt{\sec^2 \phi_p}} \right]^2 - 1 \\ & \left[\frac{\sqrt{1 + \tan^2 \phi^*}}{\sqrt{1 + \tan^2 \phi_p}} \right]^2 - 1 \\ & \left[\frac{\sqrt{1 + \hat{\theta}^{*2}}}{\sqrt{1 + \hat{\theta}_p^2}} \right]^2 - 1 \end{aligned}$$

where θ is a slope measure ($\theta \equiv \bar{r}/\sigma$); $\tan(\phi) = \theta$, which is the exact form of \tilde{W} , the original GRS-W test statistic (Gibbons, Ross, and Shanken [1]).

The return vectors $r_i \equiv x_i$ generate a scalar variance product $x_1 \cdot x_2 \rightarrow \text{var}(x)$.

$$\text{where correlation } \rho_{x_1 x_2} = \frac{\text{COV}(x_1 x_2)}{\sigma_{x_1} \sigma_{x_2}}$$

$$= \frac{\frac{\vec{x}_1 \cdot \vec{x}_2}{\sqrt{\eta-1}}}{\frac{\|\vec{x}_1\|}{\sqrt{\eta-1}} \frac{\|\vec{x}_2\|}{\sqrt{\eta-1}}}$$

for scaled returns x_1, x_2 and η observations.

Where the squared length of vector \vec{x}_1, \vec{x}_2 is :

$$\|x_1\|^2 = \left[\sqrt{a_1^2 + a_2^2 + \dots a_n^2} \right]^2$$

$$\|x_2\|^2 = \left[\sqrt{b_1^2 + b_2^2 + \dots b_n^2} \right]^2$$

Product of vectors \vec{A}, \vec{B} is $\vec{a} \cdot \vec{b} = \|\vec{a}\| \cdot \|\vec{b}\| \cos(\alpha)$

$$\forall \vec{a} = (a_1, a_2 \dots a_n) \equiv x_1$$

$$\forall \vec{b} = (b_1, b_2 \dots b_n) \equiv x_2$$

Note that P denotes the test portfolio, so it lies on or below the frontier (above it would violate the budget constraint and is hence infeasible). The proof involves the use of some basic axioms of trigonometry (such as $1 + \tan^2 \theta = \sec^2 \theta$), and displays the equivalence of the original form of the GRS test to its recast form. This is important because the recast GRS-W statistic leaves the numerical value of the test unchanged while at the same time providing a geometrical interpretation (the closer the test portfolio line is to the tangency portfolio line, the more efficient the test portfolio is) and computational ease. In that sense, there is no structural change to the original GRS-W test; it is just extended to provide a geometric and trigonometric interpretation.

A calculator with trigonometric functions can easily compute the \tilde{W} statistic, thus giving it a quick-and-ready status. It also obviates the need to calculate the length of the hypotenuse for the two points under consideration, and all that is needed is the value of the angles between the two lines and the X-axis. This quick-and-ready \tilde{W} statistic that measures the efficiency of a portfolio can be useful for professional fund manager presentations and instruction on the MV efficiency criterion. At the same time the recast statistic \tilde{W} does not suffer from any loss of generality or rigor in its structure. The study suggests this recast portfolio efficiency test statistic as an extension and not a replacement for the GRS-W test statistic.

4. A Simulated Efficient Frontier and a Test of Portfolio Efficiency

This section delves into the mechanics of tracing out an efficient MV frontier and identifying the relative location of the global MV-efficient portfolio. Thereafter, the location of an EW portfolio having the same return distribution as those of the assets employed in the formation of the efficient frontier is noted and its efficiency is tested using the recast GRS statistic. This enables us to improve on the simple eyeballing technique employed in testing the efficiency of a test portfolio used in the works of Roll and Ross [24].

The simulations begin with an initial set of five assets i whose returns are randomly generated under the assumption of normality. More specifically, the distribution specified is a Gaussian distribution of the return (r) random variable x , with mean and standard deviation $\sim N(\mu, \sigma^2)$ and having a p.d.f.:

$$f(x) = \frac{1}{\sigma\sqrt{2\pi}} e^{-\frac{1}{2}\left(\frac{x-\mu}{\sigma}\right)^2} \quad (4)$$

where μ_i was successively set at 0, 2, 4, 6, 8, 10 and σ_i was set at 0, 5, 10, 15, 20, 25.

Now, the problem reduces to one of minimizing the variance of a portfolio subject to a target rate of return and a budget constraint. The MV portfolio selection problem is one where the investor seeks to minimize the portfolio variance subject to the budget and target return constraint. A short selling, Black [36] non-negativity constraint is optional, depending on the model (Buckle [37] utilized a bivariate normal distribution due to option payoffs). Simply stated, the problem is to

$$\begin{aligned} & \text{Minimize } \sigma^2(\mathbf{x}) = \mathbf{x}^T \Sigma \mathbf{x} \\ & \text{subject to,} \\ & \mathbf{x}^T \mathbf{e} = 1 \text{ where } \mathbf{e}^T = [1, 1, \dots, 1] \\ & \mathbf{x}^T \boldsymbol{\mu} = \mu_p \\ & \text{and } \mathbf{x} \geq \mathbf{0} \text{ (optional)} \end{aligned} \quad (5)$$

where, $\boldsymbol{\mu}$ and \mathbf{x} are n -vectors composed of asset rates of return and portfolio weights respectively:

Σ is an $n \times n$ positive-definite non-singular covariance matrix;

\mathbf{e} is a unit vector;

μ_p is a scalar equal to the targeted portfolio return;

And $\mathbf{x} \geq 0$ is the short-selling constraint.

The equivalent Parametric Quadratic Programming (PQP) problem (Best and Grauer [38,39]) is

$$\text{Max} \left[\left(\mathbf{x}^T \boldsymbol{\mu} - \frac{\mathbf{x}^T \Sigma \mathbf{x}}{2} \right) \mid \mathbf{A} \mathbf{x} \leq \boldsymbol{\gamma} \right] \quad (6)$$

where, \mathbf{A} is an $m \times n$ constraint matrix, $\boldsymbol{\gamma}$ an $m \times 1$ vector, for a given var-cov matrix Σ and $|\Sigma| = \sigma_{11} \sigma_{22} \sin^2 \alpha$, where σ is the standard deviation of returns; it is well known that Generalized Variance is

$$GV = \left[\frac{\|x_1\| \|x_2\| \sin \alpha}{\eta - 1} \right]^2$$

for η observations, with α , the angle between the vectors x_1 and x_2 respectively. Another approach, called the Risk parity based allocation approaches does not require an estimate of the return vectors. Lee [40] outlined a process that is elaborated in Appendix A.4).

The solution involves the use of the Kuhn-Tucker [41] conditions (please see Appendix A.1 for the K-T conditions) to arrive at a global optimum portfolio (it is a saddle point where the variance is minimized in one plane and the mean return is maximized in the other).

However, computational solutions that hinge on algorithms, are developed for the solution of non-linear quadratic programming situations. Greene [42] reviewed some commonly used NLP algorithms and stated that the quasi-Newton algorithms belong to a "very effective class of algorithms that eliminates second derivatives altogether and has excellent convergence properties, even for ill-behaved problems". The results of this optimization can be seen in Table 1, which gives us the GRS-test values for a range of portfolio returns and standard deviations (Appendix A.2). Following Roll and Ross [24] and Shefrin and Statman [43], feasible portfolios away from the tangency portfolio will plot below the efficient frontier (infeasible above the frontier).

The plot of the efficient frontier (Figure 2) shows that this is indeed the case. The inefficient EW portfolio lies inside the frontier and considerably away from the global MV efficient portfolio. The global tangency portfolio (M) produces the highest return per unit of risk amongst all other efficient portfolios; in other words, it generates the highest value of the Sharpe ratio [16] measure for portfolio performance.

Table 1. Showing the values of the GRW-W test statistic and the Sharpe ratio θ .

GRS-W Stat					$\theta = (r - r_f)/s$				
r\s	10.00	12.00	14.00	16.00	10.00	12.00	14.00	16.00	s/r
5.00	0.198	0.276	0.328	0.364	0.400	0.333	0.286	0.250	5.00
5.50	0.150	0.2374	0.297	0.339	0.450	0.375	0.321	0.281	5.50
6.00	0.101	0.198	0.265	0.313	0.500	0.417	0.357	0.313	6.00
6.50	0.053	0.158	0.232	0.285	0.550	0.458	0.393	0.344	6.50
7.00	0.005	0.117	0.198	0.257	0.600	0.500	0.429	0.375	7.00
7.50		0.077	0.163	0.228		0.542	0.464	0.406	7.50
8.00		0.037	0.129	0.198		0.583	0.500	0.438	8.00
8.50			0.094	0.168			0.536	0.469	8.50
9.00			0.060	0.137			0.571	0.500	9.00
9.50			0.025	0.107			0.607	0.531	9.50
10.00				0.077				0.563	10.00
10.50				0.047				0.594	10.50

Bold numbers are r : return and s : std. dev.; p -value is <0.05 for all non-bold, non-italicized cells, implying inefficient portfolios. The italicized numbers are the GRS-W values $W = \left[\frac{\sqrt{1+\theta_*^2}}{\sqrt{1+\theta_p^2}} \right]^2 - 1 \equiv \psi^2 - 1$, that correspond to efficient portfolios.

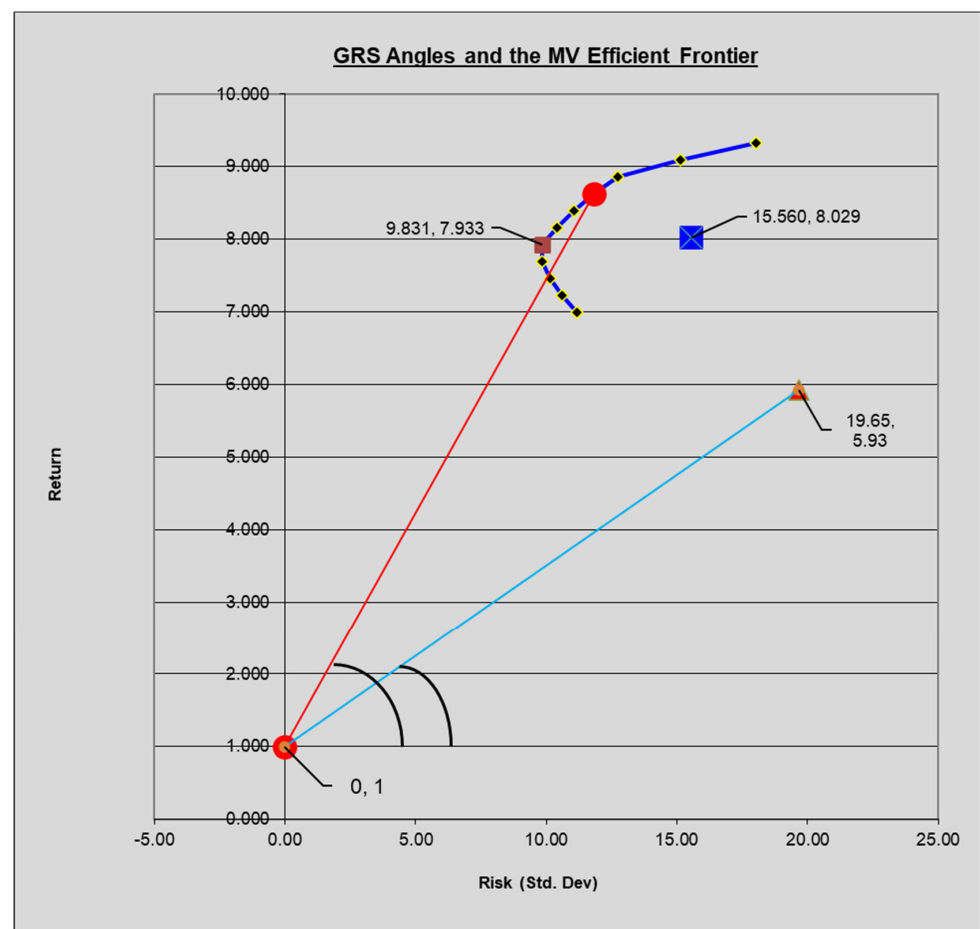


Figure 2. Results of an actual simulation are plotted here, the MV portfolio (red square) and the test portfolio (triangular orange) are also utilized to derive the actual GRS-W statistic value (Table 2). The R_f rate is 1%.

Table 2. These represent a range of actual GRS-W test statistic values and the associated Sharpe ratio values for a set of mean-variance points (as applied in Figure 2). This table has the p -values as well. $N = 30$ and a 10-year weekly period of $T = 520$. The top panel of the table illustrates the values arrived in the first two rows of the larger table, with the first row corresponding to the tangency portfolio (7.93 r , 9.83 σ), which is also applied in Figure 2, as the tangency portfolio on the efficient frontier. Cells in bold text are the efficient portfolios with low GRS-W statistics.

Tangency Portfolio (*)					Test Portfolio (p)				
mean, r	7.93				10.50				
risk free, r_f	1.00				1.00				
sigma, s	9.83				8.00				
$\theta = (r - r_f)/s$	0.705				1.188				
GRS-W Stat					0.046				
N	No. of Assets				30				
T	No. of Weekly Intervals				520				
X_F					0.759				
p -value	Rej. H_0 (is an Efficient Port) iff $p < 0$				0.8202				
	Mean, r	Sigma, s	$\theta = (r - r_f)/s$	GRS-W Stat	N	T	XF	p -Value	
Tangency Portfolio (*)	7.93	9.83	0.705		No. of Assets	No. of Weekly Intervals		Rej. H_0 (Efficient Port) iff $p < 0$	
Test Portfolio (p)	10.50	16.00	0.594	0.047	30	520	0.763	0.81564721900	Eff.
Test Portfolio (p)	3.00	10.00	0.2	0.3737	30	520	6.115	0.00000000000	Not Efficient
Test Portfolio (p)	5.00	10.00	0.400	0.198	30	520	3.238	0.00000004498	Not Efficient
Test Portfolio (p)	5.50	10.00	0.450	0.150	30	520	2.448	0.00004374410	Not Efficient
	6.00	10.00	0.500	0.101	30	520	1.652	0.01746340000	Not Efficient
	6.50	10.00	0.550	0.053	30	520	0.861	0.68131012700	Eff.
	7.00	10.00	0.600	0.005	30	520	0.081	1.00000000000	Eff.
Test Portfolio (p)	5.00	12.00	0.333	0.276	30	520	4.513	0.00000000000	Not Efficient
	5.50	12.00	0.375	0.237	30	520	3.884	0.00000000012	Not Efficient
	6.00	12.00	0.417	0.198	30	520	3.238	0.00000004498	Not Efficient
	6.50	12.00	0.458	0.158	30	520	2.580	0.00001444100	Not Efficient
	7.00	12.00	0.500	0.117	30	520	1.917	0.00279042500	Not Efficient
	7.50	12.00	0.542	0.077	30	520	1.256	0.16816038300	Eff.
	8.00	12.00	0.583	0.037	30	520	0.599	0.95601098600	Eff.
Test Portfolio (p)	5.00	14.00	0.286	0.328	30	520	5.366	0.00000000000	Not Efficient
	5.50	14.00	0.321	0.297	30	520	4.862	0.00000000000	Not Efficient
	6.00	14.00	0.357	0.265	30	520	4.336	0.00000000000	Not Efficient
	6.50	14.00	0.393	0.232	30	520	3.793	0.00000000028	Not Efficient
	7.00	14.00	0.429	0.198	30	520	3.238	0.00000004498	Not Efficient
	7.50	14.00	0.464	0.163	30	520	2.674	0.00000646460	Not Efficient
	8.00	14.00	0.500	0.129	30	520	2.107	0.00067275200	Not Efficient
	8.50	14.00	0.536	0.094	30	520	1.539	0.03571892400	Not Efficient
	9.00	14.00	0.571	0.060	30	520	0.973	0.50892160100	Eff.
	9.50	14.00	0.607	0.025	30	520	0.413	0.99780363100	Eff.
Test Portfolio (p)	5.00	16.00	0.250	0.364	30	520	5.958	0.00000000000	Not Efficient
	5.50	16.00	0.281	0.339	30	520	5.549	0.00000000000	Not Efficient
	6.00	16.00	0.313	0.313	30	520	5.117	0.00000000000	Not Efficient
	6.50	16.00	0.344	0.285	30	520	4.667	0.00000000000	Not Efficient
	7.00	16.00	0.375	0.257	30	520	4.202	0.00000000001	Not Efficient
	7.50	16.00	0.406	0.228	30	520	3.724	0.00000000053	Not Efficient
	8.00	16.00	0.438	0.198	30	520	3.238	0.00000004498	Not Efficient
	8.50	16.00	0.469	0.168	30	520	2.745	0.00000351764	Not Efficient
	9.00	16.00	0.500	0.137	30	520	2.249	0.00022052900	Not Efficient
	9.50	16.00	0.531	0.107	30	520	1.752	0.00899892900	Not Efficient
	10.00	16.00	0.563	0.077	30	520	1.256	0.16816038300	Eff.
	10.50	16.00	0.594	0.047	30	520	0.763	0.81564721900	Eff.

Glabadanidis [44] proposed a new finite sample mean-variance efficiency test based on the risk reduction of the global minimum variance (GMV) portfolio, which he found has a straightforward geometric and portfolio interpretation and complements the celebrated GRS-test well. Notice that M is tangential to a line emanating from the origin and has the property of maximizing the angle formed between the axis that measures risk and the line through the origin. Any other portfolio on or below the frontier will generate an angle that will be lesser in value. The study noted the significance of this property of the global MV efficient portfolio and employed this unique characteristic to devise a formal test for portfolio efficiency using the values of the angles formed by the test and the global MV efficient portfolio with the risk axis. While it may be visually appealing to comment on the

efficiency of a test portfolio based on its distance from the global MV efficient portfolio, a mathematically precise test conveys the information with greater clarity and conviction.

The first step in arriving at the values of the recast GRS statistic requires the precise calculation of the “portfolio angles”, since these values form an integral part of the test of portfolio efficiency. The change in the gradient of the “W stat” as (x, y) changes is shown in Figure 3; with the X-coordinate representing return and the Y-coordinate measuring the standard deviation on the portfolio, an application of the Pythagorean theorem allows us to arrive at the values of the angles created by such coordinates in the Cartesian plane.

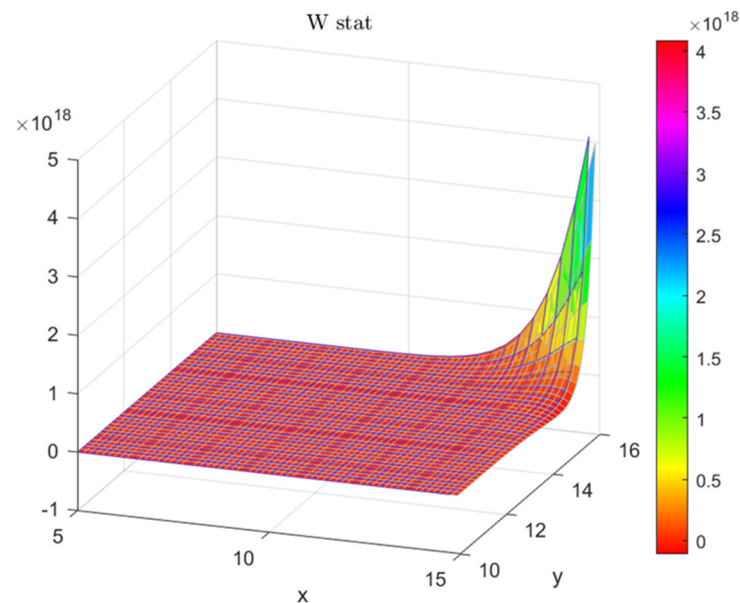


Figure 3. A plot of the left panel of Table 1, showing the spike in the GRS–W as variance approaches 16% with a low return of 5%, high “W stat” values imply inefficiency of the test portfolio.

Stated simply, the theorem states that for any right-angled triangle, the value of the hypotenuse-squared (h^2) equals the sum of the values of the perpendicular (p^2)-squared and the base-squared (b^2), i.e., $h^2 = p^2 + b^2$. For example, for the coordinates of the EW portfolio and the M portfolio (8, 4.67) and (12, 5.05); the values of the angles stretched by the two given coordinates are found as follows:

$$h(\phi_p) = \sqrt{4.67^2 + 8^2} = 9.263 \quad (7)$$

where $h(\phi_p)$ is the hypotenuse of the right angled triangle formed with two known vertices at (0,0) and (4.67, 8).

$$\Rightarrow \cos(\phi_p) = (b/h) = (4.67/9.263) = 0.5042$$

$$\Rightarrow \cos^{-1}(0.5042) = 59.717^\circ$$

$$\Rightarrow \phi_p = 59.717^\circ$$

$$\text{Similarly, } h(\phi^*) = 13.019$$

$$\Rightarrow \phi^* = 67.176^\circ, \text{ the angle stretched by the global min – var portfolio M.}$$

Recalling that the GRS-statistic also called the GRS-W statistic is

$$W = \left[\frac{\sqrt{1 + \hat{\theta}_*^2}}{\sqrt{1 + \hat{\theta}_p^2}} \right]^2 - 1 \equiv \psi^2 - 1 \quad (8)$$

(For values of W close to zero, the test portfolio cannot be called inefficient).

It has been shown that it can be recast in the following form:

$$\tilde{W} = \left[\frac{\cos \phi_p}{\cos \phi^*} \right]^2 - 1 \quad (9)$$

And if $\tilde{W} \rightarrow 0$, we cannot reject the efficiency of the test portfolio p.

Using the values found above we can see that $\tilde{W} = 0.689$ which is not close to zero, thus implying inefficiency of the test portfolio p, which, in this case, is the EW portfolio comprised of the five asset universe. Is the value of the recast GRS statistic \tilde{W} equal to the original form value of W? The original form of the GRS construction θ is the slope of a line and the Sharpe measure for the ex post price of risk. The GRS test defines $\theta \equiv \bar{r}/\sigma$ as the Sharpe measure with excess return (\bar{r}) and standard deviation of return (σ). On a more specific basis, $\hat{\theta}_*$ is the Sharpe measure of the ex post efficient portfolio (ratio of expected excess return to the standard deviation of the excess return), while $\hat{\theta}_p$ is the Sharpe measure of the test portfolio. Jurdi [45] and Agrawal et al. [46] note that investors rely on the ex-post performance of portfolios to assess the economic utility of their asset allocation and guide the portfolio rebalancing decision. Bazhutov et al. [47] further note that no market portfolio is clearly defined in CAPM testing. The coordinates of the EW test portfolio (P) and the M portfolio are (8, 4.67) and (12, 5.05), respectively, with the X-coordinate representing return and the Y-coordinate measuring the standard deviation on the portfolio. Then,

$$\begin{aligned} W &= \left[\frac{\sqrt{1+\hat{\theta}_*^2}}{\sqrt{1+\hat{\theta}_p^2}} \right]^2 - 1 \\ &= \left[\frac{\sqrt{1+\left(\frac{12}{5.05}\right)^2}}{\sqrt{1+\left(\frac{8}{4.67}\right)^2}} \right]^2 - 1 \\ &= 0.689 \\ &= \hat{W} \end{aligned} \quad (10)$$

The above mentioned demonstration shows the equality of the two statistics when actual numbers are used. The recast approach, however, involves the direct use of the angles stretched by the two lines in the hope that this could perhaps aid in a visually more intuitive use of the GRS statistic.

The GRS statistic also measures the distance, in mean-standard deviation space, between a test portfolio (market index) and a tangency portfolio (on the efficient frontier) and returns a value which is then used to assess the relative efficiency of the portfolio under consideration. The GRS statistic denoted by GRS-W is given as

$$W = \left[\frac{\sqrt{1+\hat{\theta}_*^2}}{\sqrt{1+\hat{\theta}_p^2}} \right]^2 - 1 \equiv \psi^2 - 1 \quad (11)$$

where, $\hat{\theta}_*$ is the Sharpe measure of the ex post efficient portfolio (ratio of expected excess return to the standard deviation of the excess return), and $\hat{\theta}_p$ is the Sharpe measure of the test portfolio. Essentially, θ is a slope measure ($\theta \equiv \bar{r}/\sigma$) with excess return (\bar{r}) and standard deviation of return (σ), and is the ray emanating from the origin on the Y-axis connecting to a portfolio in the first quadrant. Note that ψ cannot be less than one since $\hat{\theta}_*$ is the slope of the ex post frontier and is based on all the assets in the test (including portfolio p). To accept the efficiency of the test portfolio, ψ^2 should be close to 1. Larger values of ψ^2 imply portfolio inefficiency arising out of the increased distance between the test portfolio and the global MV efficient portfolio on the frontier ($W = \Psi^2 - 1 \rightarrow 0$ implies efficiency). In other words, for values of W close to zero, the test portfolio cannot be called inefficient (visual implementation in Appendix A.5).

The test statistic is numerically determined as

$$[T(T - N - 1)/N(T - 2)] \left[\frac{\sqrt{1 + \hat{\theta}_*^2}}{\sqrt{1 + \hat{\theta}_p^2}} \right]^2 \equiv X_F \quad (12)$$

It follows an F-distribution $\sim F(N, T-N-1)$, where N is the number of assets and T is the number of time series observations on the underlying asset returns.

H_0 : Portfolio is efficient.

The decision rule to reject H_0 is $\text{Rej. } H_0$, iff. $F(X_F, N, T-N-1) < \alpha$ a threshold p -value. For the two portfolios with the given sample (r, r_f, σ) in the table below, the various parameters required to determine the GRS statistic are displayed below:

The GRS test confirmed that the test portfolio is not efficient relative to the tangency portfolio.

5. Conclusions

The implication of using such an inefficient portfolio as a market index can be best stated in the words of Roll and Ross [24], who said “if the index is not efficient, the ex ante cross-sectional relation does not hold exactly and no other variables can have explanatory power”. Gibbons, Ross, and Shanken [1]) had earlier stated that “if the proxy is not a valid surrogate, then as tests of the CAPM the existing empirical investigations are somewhat beside the point”. Tests devised to measure portfolio efficiency are crucial to the theoretical issues related to CAPM testing, Fama and French [48] and have applications for fund managers who seek to rank portfolio performance. This study provides an extension/recharacterization of the GRS-test with the objective of giving it a geometrical interpretation (Agarwal [49]) and making its implementation easier; there is no structural change to the original GRS-W test, only that it is extended to provide a visual interpretation (Appendix A.5). It utilized the trigonometric properties of a portfolio in the mean-variance space to arrive at the mathematical equivalence of the two tests. A simulation demonstrates the use of the recast GRS-Wald test in testing for the mean-variance efficiency of a test portfolio. The study also provides a table of the GRS-Wald test, based on a range of mean-variance locations (cosine of portfolio angles, Appendix A.3) at which the test portfolio and the efficient market portfolio can be placed.

Funding: This research received no external funding.

Data Availability Statement: Pricing data is via the Wharton Research Data Services. Numerical simulations via Matlab. Available online: <https://wrds-www.wharton.upenn.edu/> (accessed on 1 March 2023).

Acknowledgments: I am thankful for the role of my dissertation committee in the development of my quantitative finance studies. An earlier version of this paper received the Best Doctoral Paper Award, at the South Western Finance Association, San Antonio, 1996.

Conflicts of Interest: The author declares no conflict of interest.

Appendix A.

Appendix A.1. The Kuhn-Tucker [41] Saddle Point Theorem

$$\text{Max } f(\mathbf{x})$$

$$\text{s.t. } g_i(\mathbf{x}) \geq 0$$

where f is the objective function and g is the constraint $\forall i = 1 \dots m$,
and $\mathbf{x} \in R^n$.

$$\text{Then } L: R^n \rightarrow R \text{ where } L(\mathbf{x}, \lambda) = f(\mathbf{x}) + \lambda g(\mathbf{x})$$

Then for a real λ^* , \mathbf{x}^* solves the above iff the following KTC's are satisfied:

$$\frac{\partial L(\lambda^*, \mathbf{x}^*)}{\partial x} = 0$$

$$\lambda^* > 0,$$

$$\lambda^* g(\mathbf{x}^*) = 0,$$

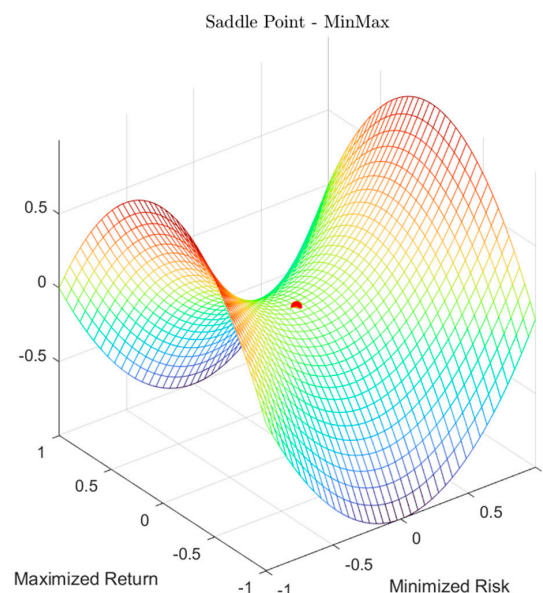
$$\text{and, } g(\mathbf{x}^*) \geq 0$$

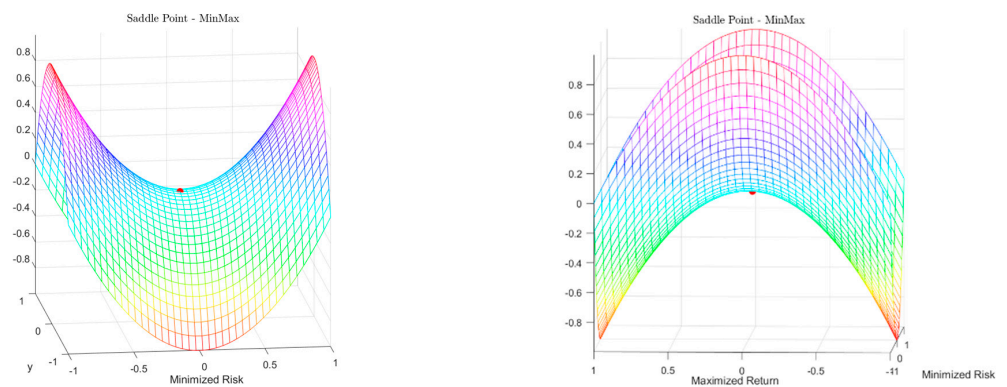
This will solve for the global maxima.

The dual for the Lagrangian $\mathcal{L}(x, \lambda) = f_0(x) + \sum_{i=1}^n \lambda_i f_i(x)$ is given as $\lambda^* \in \arg\max_{\lambda} g(\lambda)$ s.t. $\lambda \geq 0$ where $g(\lambda) = \min_x L(x, \lambda)$ is the dual function. Duality holds when:
 $\min_x \max_{\lambda \geq 0} L(x, \lambda) = \max_{\lambda \geq 0} \min_x L(x, \lambda)$.

The problem of minimizing risk while simultaneously maximizing return is a constrained optimization problem (Markowitz [50]), where the budget constraint is $\sum_{i=0}^n w_i = 1$ and the short selling constraint on asset weights is $\forall i, w_i \geq 0$ to which the K-T saddle point (Balbás et al. [51]) conditions apply.

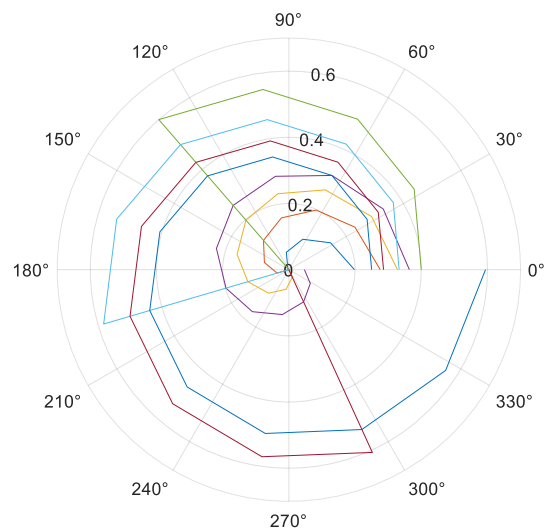
The first of these three plots is the K-T saddle point minmax optimal point, the next two are when the axis is rotated 90° and show the same optimal point, but on different reference planes.





Appendix A.2. Polar Plot of the Table of Sharpe Ratios and the GRS–W Statistic

As the delta of the angle between the test and the tangency portfolio increases as the GRS-W statistic increases, implying inefficiency. The table is based on the internal area values of Table 1 for a range of return values on the outside columns and incremental variances on the top row.



GRS~W Stat					$\theta = (r - r_f)/s$				
$r \backslash s$	10	12	14	16	10	12	14	16	s/r
5	0.198	0.276	0.328	0.364	0.4	0.333	0.286	0.25	5
5.5	0.15	0.2374	0.297	0.339	0.45	0.375	0.321	0.281	5.5
6	0.101	0.198	0.265	0.313	0.5	0.417	0.357	0.313	6
6.5	0.053	0.158	0.232	0.285	0.55	0.458	0.393	0.344	6.5
7	0.005	0.117	0.198	0.257	0.6	0.5	0.429	0.375	7
7.5		0.077	0.163	0.228		0.542	0.464	0.406	7.5
8		0.037	0.129	0.198		0.583	0.5	0.438	8
8.5			0.094	0.168			0.536	0.469	8.5
9			0.06	0.137			0.571	0.5	9
9.5			0.025	0.107			0.607	0.531	9.5
10				0.077				0.563	10
10.5				0.047				0.594	10.5

Bold numbers are r: return and s: std. dev.; p -value is <0.05 for all non-bold, non-italicized cells, implying inefficient portfolios. The italicized numbers are the GRS-W values

$$W = \left[\frac{\sqrt{1+\theta_*^2}}{\sqrt{1+\theta_p^2}} \right]^2 - 1 \equiv \psi^2 - 1, \text{ that correspond to efficient portfolios.}$$

Appendix A.3. Values of the GRS-W Statistic for a Range of Angles

Test Port													
ANGLE		0	10	20	30	40	45	50	60	70	80	90	
mkt tangency port	cosine (x°)	1.00	0.98	0.94	0.87	0.77	0.71	0.64	0.50	0.34	0.17	0.00	
	0	1.00	0.000										
	10	0.98	0.031	0.000									
	20	0.94	0.132	0.098	0.000								
	30	0.87	0.333	0.293	0.177	0.000							
	40	0.77	0.704	0.653	0.505	0.278	0.000						
	45	0.71	1.000	0.940	0.766	0.500	0.174	0.000					
	50	0.64	1.420	1.347	1.137	0.815	0.420	0.210	0.000				
	60	0.50	3.000	2.879	2.532	2.000	1.347	1.000	0.653	0.000			
	70	0.34	7.549	7.291	6.549	5.411	4.017	3.274	2.532	1.137	0.000		
	80	0.17	32.163	31.163	28.284	23.873	18.461	15.582	12.702	7.291	2.879	0.000	
90	0.00	2.6,10+32	2.58,10+32	2.35,10+32	1.99,10+32	1.56,10+32	1.33,10+32	1.10,10+32	6.66,10+31	3.12,10+31	8.04,10+30	0.000	

This table provides the values of the recast GRS—test statistic and is based on the angles (in *italics*) stretched by the portfolio under test (test port) and the globally MV efficient portfolio (mkt tangent port). Only the lower triangular matrix is relevant because the test portfolio has to lie in the feasible zone of the ellipse. Values of the statistic close to zero (in *italics*) imply efficiency (say 40° test port, and 45° tangency port (cosine(.) values in Bold text (0.77, 0.71), results in a GRS-test value of 0.174). The further the location of a test portfolio from the tangency portfolio the larger the distance (GRS-test values) and the lower the portfolio efficiency. The values of N and T impact the p -values as applied to the test and not the GRS-W test *per se*. They are also provided in Table 2 for a set of mean-variance locations. Essentially the trigonometric test has to be digitized since there would be a very large number of mean-variance combinations and locations on the X-Y plane. A digital copy can be supplied upon request.

Appendix A.4. Risk Parity: Avoiding the Problem of Error Maximization in a Mean-Variance Optimization Framework

Lee (2011), shows that for a portfolio with a variance–covariance structure Σ , risk parity is the state when the percentage contribution to total risk (PCTR) of an asset equals that of another, resulting in an even distribution of risk across all constituent asset classes. Mathematically, as reported in Agrawal [52] for the “bivariate (Maillard, Roncalli, and Teiletche [53] also provide the general case for $n > 2$ assets, and Qian [54] for the $n = 2$ case) $n = 2$ asset case, where ρ_{12} is the correlation, σ_1 , σ_2 and σ_p the standard deviations of the assets and the portfolio, and non-negative weights such that $w_1 + w_2 = 1$, the problem reduces to equating $\text{PCTR}_i = \text{PCTR}_j \forall i \neq j$:

$$\sigma_p^2 = w_1^2 \sigma_1^2 + w_2^2 \sigma_2^2 + 2w_1 w_2 \rho_{12} \sigma_1 \sigma_2$$

$$\text{PCTR}_1 = \left[w_1 \frac{\partial \sigma_p}{\partial w_1} / \sigma_p \right] = \frac{w_1^2 \sigma_1^2 + w_1 w_2 \rho_{12} \sigma_1 \sigma_2}{\sigma_p^2}$$

$$PCTR_2 = \left[w_2 \frac{\partial \sigma_p}{\partial w_2} / \sigma_p \right] = \frac{w_2^2 \sigma_2^2 + w_1 w_2 \rho_{12} \sigma_1 \sigma_2}{\sigma_p^2}$$

$$\beta_i = \left[\frac{\sigma_{ip}}{\sigma_p^2} \right] \Rightarrow w_i \propto \beta_i^{-1} \quad \forall i = 1, 2$$

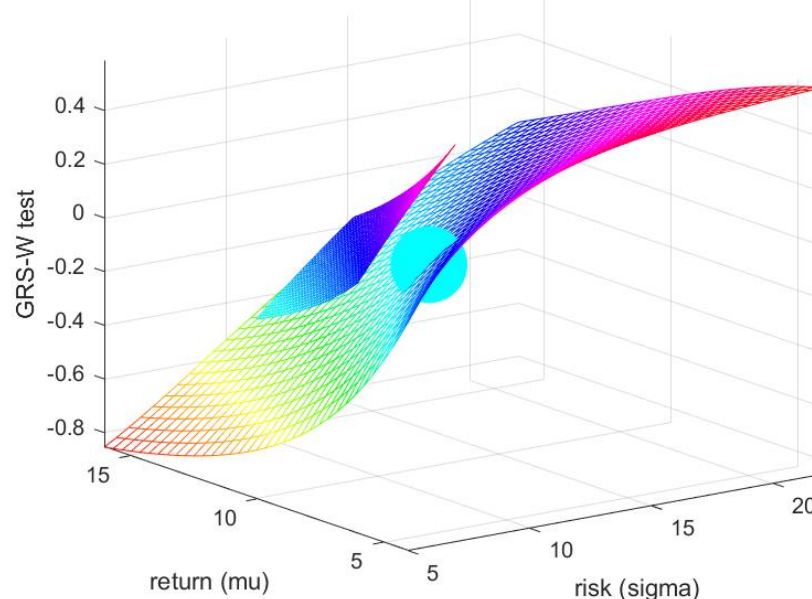
This also implies that w_i , the weight of asset i is inversely proportional to its beta β_i . Choueifaty and Coignard [55], also abstract from the classic mean-variance optimized portfolios and thereafter developed risk-parity based strategies. Yu [56], in a comprehensive study on the leading methodological issues surrounding CAPM modeling identified nine major mathematical issues that affect beta estimation, of which Agrawal [46] and Fama and French [3] link to frequency, interval and dynamic weighting constructs that ultimately affect portfolio efficiency measures. In a recent paper, de Jong and diBartolomeo [57], discuss evolving implications of optimization that deal with new alpha sources emanating from multiple performance sources and portfolio efficiency measures. Stone et al. [58] find evidence that points to a fundamental revision in the theory of the relationship between cash levels in a financial system and central bank interest rates; this paper fundamentally recasts the GRS-W statistic based on its trigonometric properties.

Appendix A.5. Risk Parity: Efficient Portfolio Zone as a Floating Hyperplane, the Tangency Portfolio and the GRS-W Statistic Gradient -3D Efficient Frontier with Actual ETFs

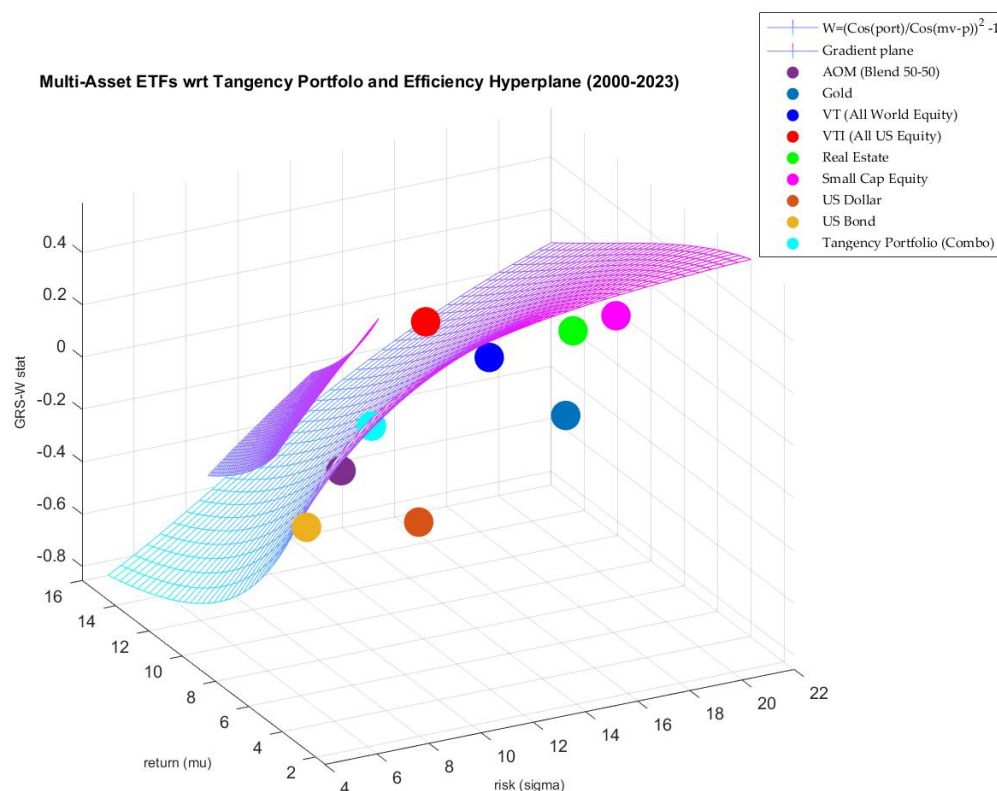
Based on large scale numerical runs with actual pricing data, using a variety of multi-asset portfolios, WRDS [26], Agrawal [52], a stable and realistic tangency portfolio placed at 8% annual return with a standard deviation of 10% per year. Utilizing that central point

a mesh grid of the GRS-W test values $W = \left[\frac{\sqrt{1+\theta_*}}{\sqrt{1+\theta_p}} \right]^2 - 1 \equiv \psi^2 - 1$, were spanned for $\mu \in (5\% \text{ to } 15\%)$ and $\sigma \in (5\% \text{ to } 25\%)$. The gradient of the Z-axis values is indicative of the inefficiencies associated with even minor perturbations in the mean-variance space around the tangency portfolio (blue sphere). The floating hyperplane is the efficiency space projected around the tangency portfolio.

Optimal Investment Zone around Tangency Portfolio and GRS-W gradient



At a reviewer's suggestion, a set of highly liquid and diversified Exchange traded Funds -ETFs (VT, VTI, IWM, VEU, BND, GLD, AOK, AOM, UUP, FXE, IYR), were plotted in the mean-variance-GRS-test space. As can be seen in the figure with the multiple spheres, these ETFs plotted around the bright-blue tangency portfolio. However, this efficient frontier is now an "efficient dome" and the GRS-W test is the Z-axis, making it visually quite apparent which of the assets are in the efficiency zone.



The author will be glad to provide additional granularity and the implementation of Matlab's #fmesh (f) protocol to generate these analytics. It can be seen that the efficiency zone is in the vicinity of the GRS-W value of around zero, implying portfolio efficiency. These are not some randomly chosen ETFs, they represent the major asset-classes that extend beyond the equity market to the various components of the capital markets (Agrawal [52]). One desirable attribute of these, apart from automatic diversification and high liquidity is low within pair correlation and a lower matrix covariance structure, following

$$\text{from Equation (3) earlier in the text. Correlation} = \frac{\vec{x}_1 \cdot \vec{x}_2}{\|\vec{x}_1\| \|\vec{x}_2\|} = \frac{(\eta - 1)}{\sqrt{\eta - 1} \sqrt{\eta - 1}} \rho_{x_1 x_2} = \frac{\text{cov}(x_1 x_2)}{\sigma_{x_1} \sigma_{x_2}}.$$

References

1. Gibbons, M.R.; Ross, S.; Shanken, J. A Test of the Efficiency of the Given Portfolio. *Econometrica* **1989**, *57*, 1121–1152. [\[CrossRef\]](#)
2. Galea, M.; Cademartori, D.; Curci, R.; Molina, A. Robust Inference in the Capital Asset Pricing Model Using the Multivariate t-distribution. *J. Risk Financ. Manag.* **2020**, *13*, 123. [\[CrossRef\]](#)
3. Fama, E.F.; French, K.R. A five-factor asset pricing model. *J. Financ. Econ.* **2015**, *116*, 1–22.
4. Gustafson, K. Operator Trigonometry of Multivariate Finance. *J. Multivar. Anal.* **2010**, *101*, 374–384. [\[CrossRef\]](#)
5. Gustafson, K. A New Financial Risk Ratio. *J. Stat. Comput. Simul.* **2015**, *85*, 2682–2692. [\[CrossRef\]](#)
6. Rodriguez, R.J. Graphical Portfolio Analysis. *Financ. Rev.* **1996**, *31*, 869–884.
7. Roll, R. A critique of the asset pricing theory's tests Part I: On past and potential testability of the theory. *J. Financ. Econ.* **1977**, *4*, 129–176. [\[CrossRef\]](#)
8. Chen, J.M. The Capital Asset Pricing Model. *Encyclopedia* **2021**, *1*, 915–933. [\[CrossRef\]](#)

9. Hu, S.; Li, D.; Jia, J.; Liu, Y. A Self-Learning Based Preference Model for Portfolio Optimization. *Mathematics* **2021**, *9*, 2621. [CrossRef]
10. Bodnar, T.; Schmid, W. Econometrical analysis of the sample efficient frontier. *Eur. J. Financ.* **2009**, *15*, 317–335. [CrossRef]
11. Cueto, J.M.; Grané, A.; Cascos, I. How to Explain the Cross-Section of Equity Returns through Common Principal Components. *Mathematics* **2021**, *9*, 1011. [CrossRef]
12. Ryan, N.; Ruan, X.; Zhang, J.E.; Zhang, J.A. Choosing Factors for the Vietnamese Stock Market. *J. Risk Financ. Manag.* **2021**, *14*, 96. [CrossRef]
13. Suárez, J.; Alonso-Conde, A.B. Relative Entropy and Minimum-Variance Pricing Kernel in Asset Pricing Model Evaluation. *Entropy* **2020**, *22*, 721. [CrossRef] [PubMed]
14. Solórzano-Taborga, P.; Alonso-Conde, A.B.; Rojo-Suárez, J. Data Envelopment Analysis and Multifactor Asset Pricing Models. *Int. J. Financ. Stud.* **2020**, *8*, 24. [CrossRef]
15. Barillas, F.; Kan, R.; Robotti, C.; Shanken, J. Model Comparison with Sharpe Ratios. *J. Financ. Quant. Anal.* **2020**, *55*, 1840–1874. [CrossRef]
16. Sharpe, W.F. Mutual Fund Performance. *J. Bus.* **1966**, *39*, 119–138. Available online: <http://www.jstor.org/stable/2351741> (accessed on 1 March 2023). [CrossRef]
17. Kamstra, M.; Shi, R. *A Note on the GRS Test*; Technical Report; Department of Economics, University of California at Riverside: Riverside, CA, USA, 2021.
18. Fletcher, J. An Empirical Examination of the Incremental Contribution of Stock Characteristics in UK Stock Returns. *Int. J. Financ. Stud.* **2017**, *5*, 21. [CrossRef]
19. Vigo-Pereira, C.; Laurini, M. Portfolio Efficiency Tests with Conditioning Information—Comparing GMM and GEL Estimators. *Entropy* **2022**, *24*, 1705. [CrossRef]
20. Basak, G.K.; Jagannathan, R.; Sun, G. A Direct Test for the Mean Variance Efficiency of a Portfolio. *J. Econ. Dyn. Control* **2002**, *26*, 1195–1215. [CrossRef]
21. Kim, J.H.; Robinson, A.P. Interval-Based Hypothesis Testing and Its Applications to Economics and Finance. *Econometrics* **2019**, *7*, 21. [CrossRef]
22. Shanken, J. 23 Statistical methods in tests of portfolio efficiency: A synthesis. *Handb. Stat.* **1996**, *14*, 693–711. [CrossRef]
23. MacKinlay, A.C. Multifactor models do not explain deviations from the CAPM. *J. Financ. Econ.* **1995**, *38*, 3–28. [CrossRef]
24. Roll, R.; Ross, S.A. On the Cross-Sectional Relation between Expected Returns and Betas. *J. Financ.* **1994**, *49*, 101. [CrossRef]
25. Zhou, G. Asset-pricing Tests under Alternative Distributions. *J. Financ.* **1993**, *48*, 1927–1942. [CrossRef]
26. WRDS. CRSP Pricing Data on Stocks. *Wharton Research Data Services*. 2023. Available online: <https://wrds-www.wharton.upenn.edu/> (accessed on 1 March 2023).
27. Agrawal, P. An automation algorithm for harvesting capital market information from the web. *Manag. Financ.* **2009**, *35*, 427–438.
28. Bodnar, T.; Gupta, A.K.; Vitlinskiy, V.; Zabolotskiy, T. Statistical Inference for the Beta Coefficient. *Risks* **2019**, *7*, 56. [CrossRef]
29. Fama, E.F.; French, K.R. Common risk factors in the returns on stocks and bonds. *J. Financ. Econ.* **1993**, *33*, 3–56. [CrossRef]
30. Hou, K.G.; Karolyi, G.A.; Kho, B. What Factors Drive Global Stock Returns? *Rev. Financ. Stud.* **2011**, *24*, 2527–2574. [CrossRef]
31. Ehsani, S.; Linnainmaa, J.T. Factor Momentum and the Momentum Factor. *J. Financ.* **2022**, *77*, 1877–1919. [CrossRef]
32. Merton, R.C. An analytical derivation of the efficient frontier. *J. Financ. Quant. Anal.* **1972**, *7*, 1851–1872. [CrossRef]
33. Gómez-Déniz, E.M.E.; Ghitany, M.E.; Gupta, R.C. A bivariate generalized geometric distribution with applications. *Commun. Stat. Theory Methods* **2017**, *46*, 5453–5465. [CrossRef]
34. Danko, J.; Soltés, V.; Bindzar, T. Portfolio creation using graph characteristics and testing its performance. *Montenegrin J. Econ.* **2022**, *18*, 7–17. [CrossRef]
35. MacKinlay, C.A.; Richardson, M. Using Generalized Method of Moments to Test Mean-Variance Efficiency. *J. Financ.* **1991**, *46*, 511–527. [CrossRef]
36. Black, F. Capital Market Equilibrium with Restricted Borrowing. *J. Bus.* **1972**, *45*, 444–454.
37. Buckle, D. The Impact of Options on Investment Portfolios in the Short-Run and the Long-Run, with a Focus on Downside Protection and Call Overwriting. *Mathematics* **2022**, *10*, 1563. [CrossRef]
38. Best, M.J. Equivalence of some Quadratic Programming Algorithms. *Math. Program.* **1984**, *30*, 71–87. [CrossRef]
39. Best, M.J.; Grauer, R.R. On the Sensitivity of Mean-Variance-Efficient Portfolios to Changes in Asset Means: Some Analytical and Computational Results. *Rev. Financ. Stud.* **1991**, *42*, 315–342.
40. Lee, W. Risk On/Risk Off. *J. Portf. Manag.* **2012**, *38*, 28–39.
41. Kuhn, H.W.; Tucker, A.W. Nonlinear programming. In Proceedings of the Second Berkeley Symposium on Mathematical Statistics and Probability 1950, Berkeley, CA, USA, 31 July–12 August 1950; pp. 481–492.
42. Greene, W.H. *Econometric Analysis*; Prentice Hall: Hoboken, NJ, USA, 2002; ISBN 10: 0130661899; ISBN 13: 9780130661890.
43. Shefrin, H.M.; Statman, M. Behavioral Capital Asset Pricing Theory. *J. Financ. Quant. Anal.* **1994**, *29*, 323–349. [CrossRef]
44. Glabadanidis, P. Another Test of the Efficiency of a Given Portfolio. *SSRN Electron. J.* **2015**. [CrossRef]
45. Jurdi, D.J. Predicting the Australian equity risk premium. *Pac. Basin Financ. J.* **2022**, *71*, 101683. [CrossRef]
46. Agrawal, P.; Gilbert, F.W.; Harkins, J. Time Dependence of CAPM Betas on the Choice of Interval Frequency and Return Timeframes: Is There an Optimum? *J. Risk Financ. Manag.* **2022**, *15*, 520. [CrossRef]

47. Bazhutov, D.; Betzer, A.; Stehle, R. Beta estimation in the European network regulation context: What matters, what doesn't, and what is indispensable. *Financ. Mark. Portf. Manag.* **2023**. [[CrossRef](#)]
48. Fama, E.F.; French, K.R. The Cross-Section of Expected Stock Returns. *J. Financ.* **1992**, *47*, 427–465. [[CrossRef](#)]
49. Agrawal, P. On Certain Aspects of the Ex Ante CAPM. Ph.D. Dissertation, University of Alabama, Tuscaloosa, AL, USA, 1996.
50. Markowitz, H. Portfolio Selection. *J. Financ.* **1952**, *7*, 77–91. [[CrossRef](#)]
51. Balbás, A.; Balbás, B.; Balbás, R. Minimizing measures of risk by saddle point conditions. *J. Comput. Appl. Math.* **2010**, *234*, 2924–2931. [[CrossRef](#)]
52. Agrawal, P. Using Index ETFs for Multi-Asset-Class Investing: Shifting the Efficient Frontier Up. *J. Beta Investig. Strateg.* **2013**, *4*, 83–94.
53. Maillard, S.; Roncalli, T.; Teiletche, J. The Properties of Equally-Weighted Risk Contributions Portfolios. *J. Portf. Manag.* **2010**, *36*, 60–70. [[CrossRef](#)]
54. Qian, E. On the Financial Interpretation of Risk Contribution: Risk Budgets Do Add Up. *J. Investig. Manag.* **2006**, *4*, 41–51. [[CrossRef](#)]
55. Choueifat, Y.; Coignard, Y. Toward Maximum Diversification. *J. Portf. Manag.* **2008**, *35*, 40–51. [[CrossRef](#)]
56. Yu, Z. Cross-Section of Returns, Predictors Credibility, and Method Issues. *J. Risk Financial Manag.* **2023**, *16*, 34. [[CrossRef](#)]
57. de Jong, M.; diBartolomeo, D. Multiple Alpha Sources and Portfolio Design. *J. Asset Manag.* **2021**, *22*, 389–390. [[CrossRef](#)]
58. Stone, A.L.; Gup, B.E.; Lee, J. New insights about the relationship between corporate cash holdings and interest rates. *J. Econ. Finan.* **2018**, *42*, 33–65. [[CrossRef](#)]

Disclaimer/Publisher's Note: The statements, opinions and data contained in all publications are solely those of the individual author(s) and contributor(s) and not of MDPI and/or the editor(s). MDPI and/or the editor(s) disclaim responsibility for any injury to people or property resulting from any ideas, methods, instructions or products referred to in the content.