

Figure S1. Schematic diagram of the split-roots system.

AM represents roots with AM inoculation, NM represents roots without AM inoculation, and the number at the bottom of the root compartment represents the four type roots.

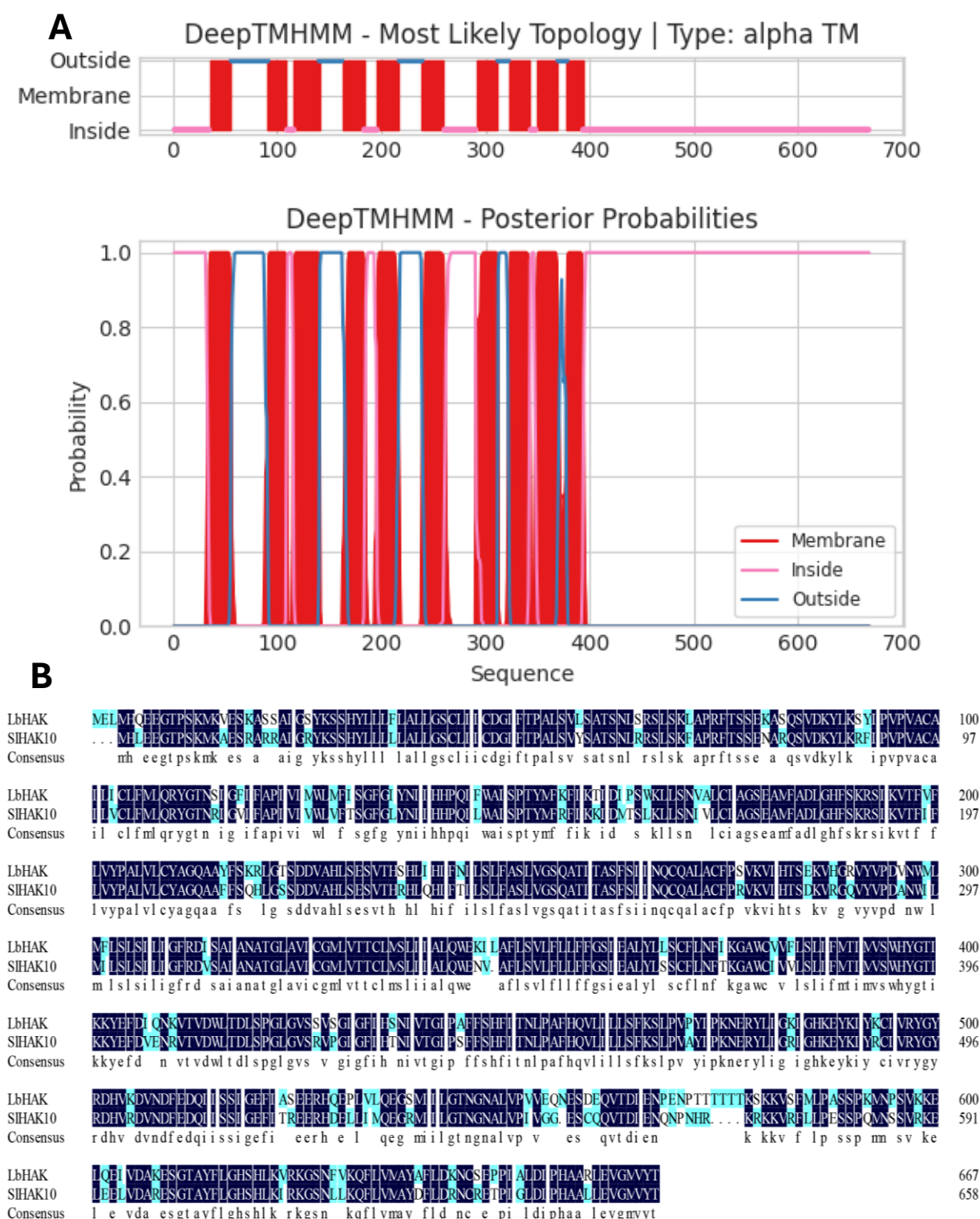


Figure S2. Bioinformation analysis of *LbHAK*. The putative transmembrane domains of *LbHAK* (A), and multiple alignment of the deduced amino acid sequences of *LbHAK* in *L. barbarum* with *SlHAK10* in tomato (B).

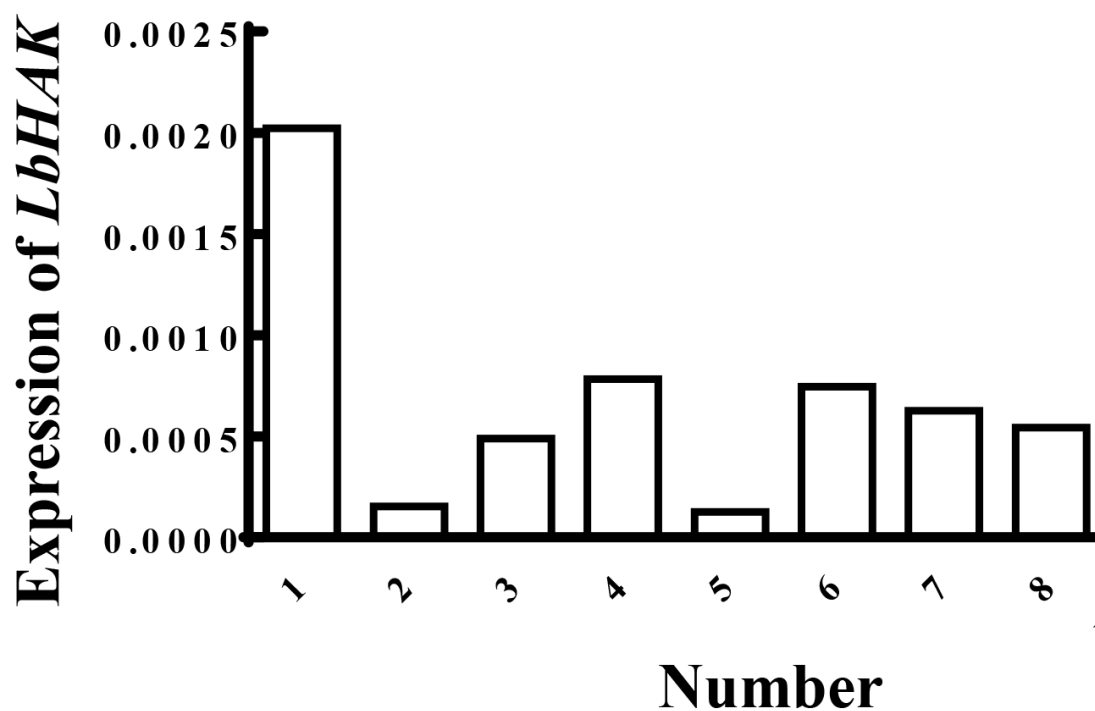


Figure S3. Detection of *LbHAK* expression in different transgenic tobacco plants.

The number represents different transgenic tobacco lines.