

Supplementary Materials

Table S1. Primers sequences for RT-qPCR.

Gene name		Primers sequences
<i>CqBIN2</i>	F	GTGATGGCTTGGCTGAGAGGTG
	R	CGGTCGGAGATTGGAAGTAGAGTC
<i>CqP5CS1</i>	F	AATGCCTAATACTCCTGCTGCTGTG
	R	GCCTTGCCAACTGCTCCAAATAATC
<i>CqP5CS2</i>	F	AATGCCTAATACTCCTGCTGCTGTG
	R	GCTCGCCATCCTCTTCAGTTGC
<i>CqProDH1</i>	F	AAGTTGGCTGCTTCACTAGGGTTTG
	R	CGACATTATGGGTGGCAAGGACTG
<i>CqProDH2</i>	F	ATTGGCTGCTTCACTTGGGTATGAG
	R	CGACATTATGGGTGGCAAGGACTG
<i>CqOAT</i>	F	AGCCTACCCACAACACAATCATAAG
	R	CTTCAGACAGTGCCTTGTTCC
<i>CqMON1</i>	F	GTATTGGTGGTCCTTGTTG
	R	CTGCTGTGGTGTATTGATT

Table S2. Primers sequences for BSMV-VIGS.

Gene name		Primers sequences
<i>CqBIN2</i>	F	TAGAAGGCCTCCATGATGGAGCAAGGGGTTTCCTC
	R	GAGACGCGTGAGCTCAAGCTGCTCAACTTCAGCGT

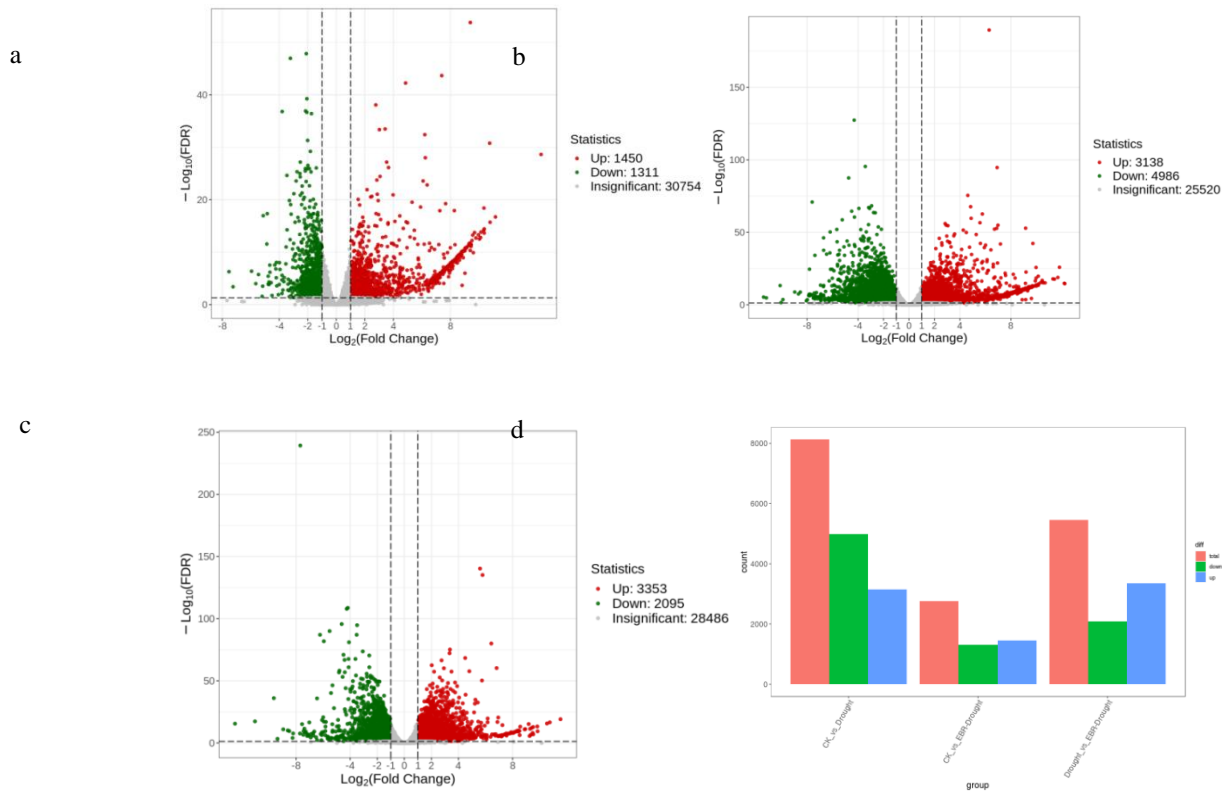


Figure S1. The diagram of differential gene volcano and differential gene statistics (a): CK and Drought; (b): CK and EBR + Drought; (c): Drought and EBR + Drought; (d): Differential gene statistics chart.

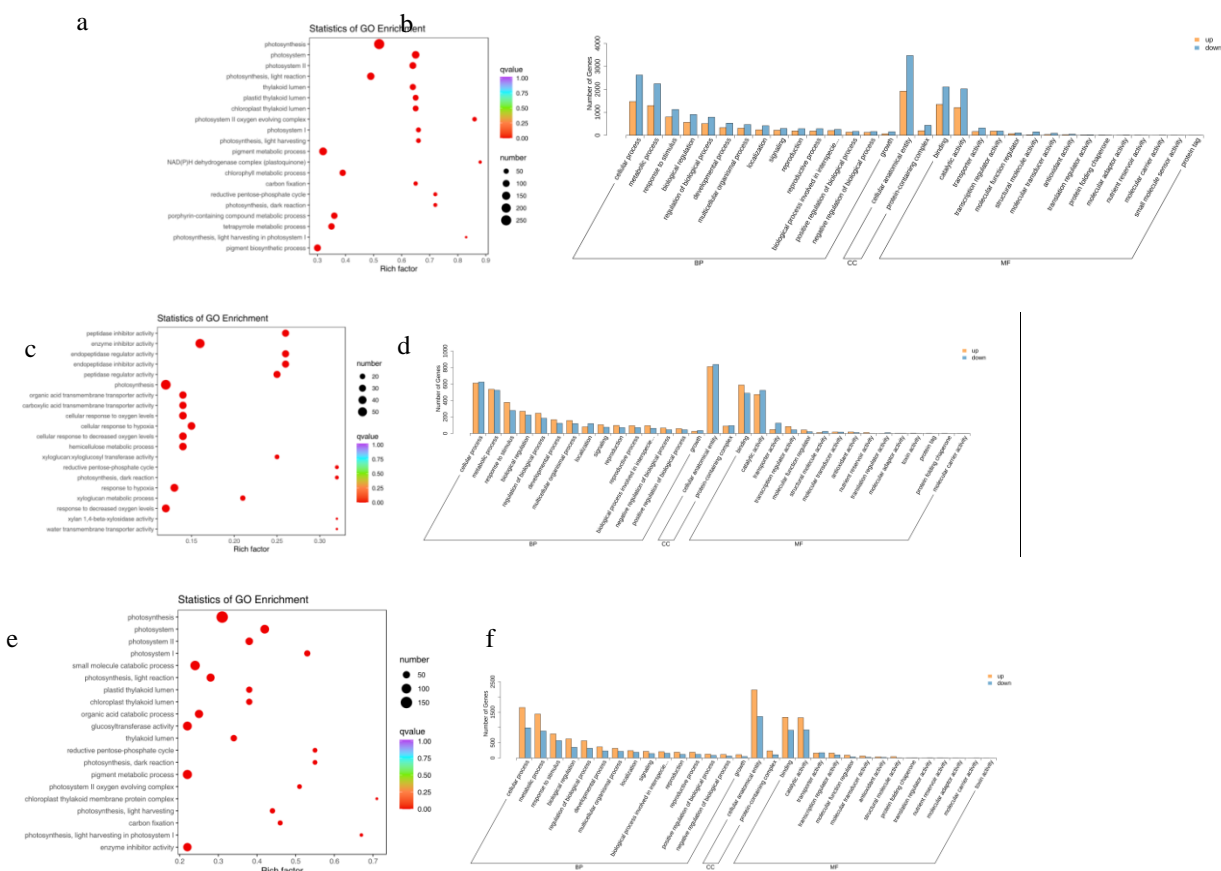


Figure S2. 2 GO enrichment scatter plot and Go classification histogram of DEGs (a, b): CK and Drought; (c, d): CK and EBR + Drought; (e, f): Drought and EBR + Drought.