

Table S1. Primers.

Purpose	Gene/clone/plasmid	Gene ID	Forward primer sequence (5' to 3')	Reverse primer sequence (5' to 3')	Rmarks
Gene cloning	<i>PBL27</i>	At5g18610	CACCATGAGTGGGTGTTTGCCTTGT	GTCATTGTGACTATCAAAGCTGC	clone into pENTR/D-TOPO
	<i>CRK2</i>	At3g19100	<u>CCACCCACCACCA</u> CAATGGGAGGCT	<u>TCCAGCACTAGCTCCAGA</u> TTCGCGTTTT	without stop codon, Underline: S1 or T1-linker sequence
	<i>CRK3</i>	At2g46700	<u>CCACCCACCACCA</u> CAATGGGGCAAT	<u>TCCAGCACTAGCTCCAGA</u> GCGAGGTC	without stop codon, Underline: S1 or T1-linker sequence
	<i>CPK3</i>	At4g23650	<u>CCACCCACCACCA</u> CAATGGGCCACAGACACAGCAA	<u>TCCAGCACTAGCTCCAGA</u> CATTCTGCGTCGGTTTGCA	without stop codon, Underline: S1 or T1-linker sequence
	<i>CPK13</i>	At3g51850	<u>CCACCCACCACCA</u> CAATGGGAACTGTTGCAGATC	<u>TCCAGCACTAGCTCCAGA</u> TTCGTTGCCTAGGTTCAAAG	without stop codon, Underline: S1 or T1-linker sequence
	<i>ERF13</i>	At2g44840	<u>CCACCCACCACCA</u> CAATGAGCTCATCTGATTCCGT	<u>TCCAGCACTAGCTCCAGA</u> TTATATCCGATTATCAGAAT	include stop codon, Underline: S1 or T1-linker sequence
	pDONRzeo_cloning_2nd PCR		GGGGACAAGTTTGTACAAAAAAGCAGGCTT <u>CCACCCACCACCA</u> ATG	GGGGACCACCTTTGTACAAGAAAGCTGGGTCT <u>CAGCACTAGCTCCAGA</u>	Underline: S1 or T1-linker sequence, clone into pDONRzeo
Promoter region cloning	<i>PDF1.2</i>	At5g44420	TTATAATGTCGGTTTTTCC	TATTTCTTCACACAACAC	
RT-qPCR	<i>PDF1.2</i>	At5g44420	TGTTCTCTTTGCTGCTTTCG	GTTGCATGATCCATGTTTGG	
	<i>ERF13</i>	At2g44840	GGATGTACTTCCGTAACCCGA	GGCATCACGGAGAGTGTTGTA	
	<i>ACT8</i>	At1g49240	TGCTGGTCGTGACCTTACTG	CGAGGTCTCCATCTCTTGCT	

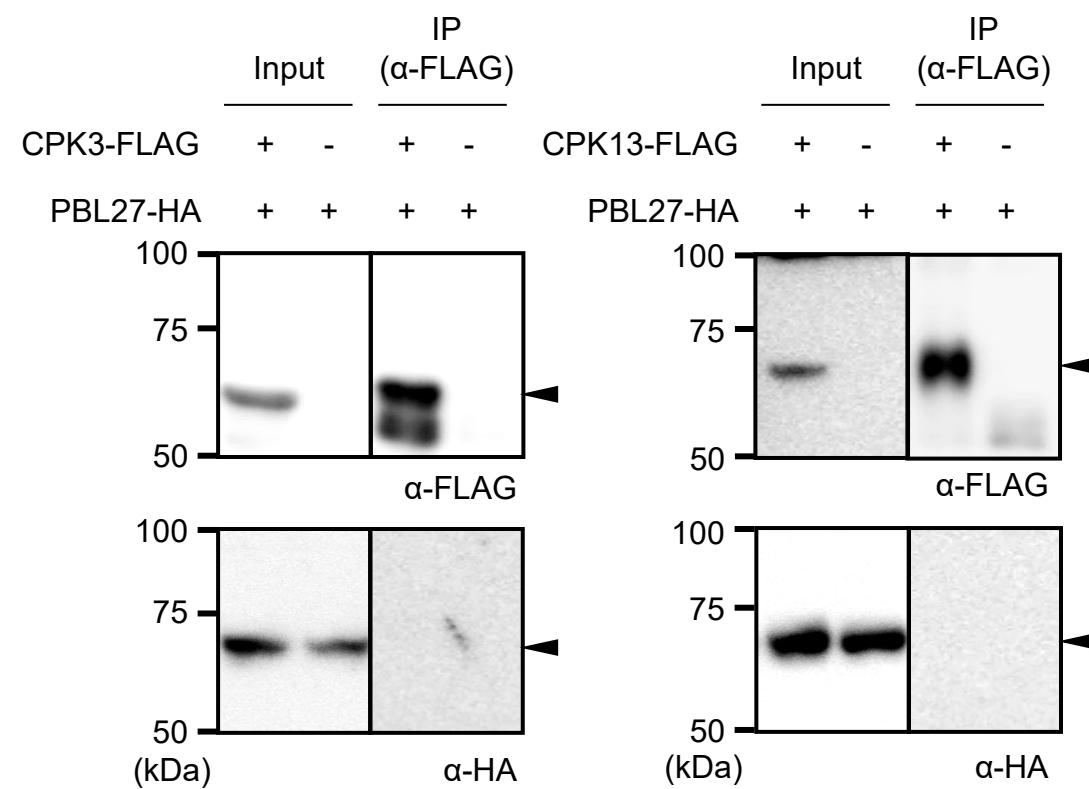
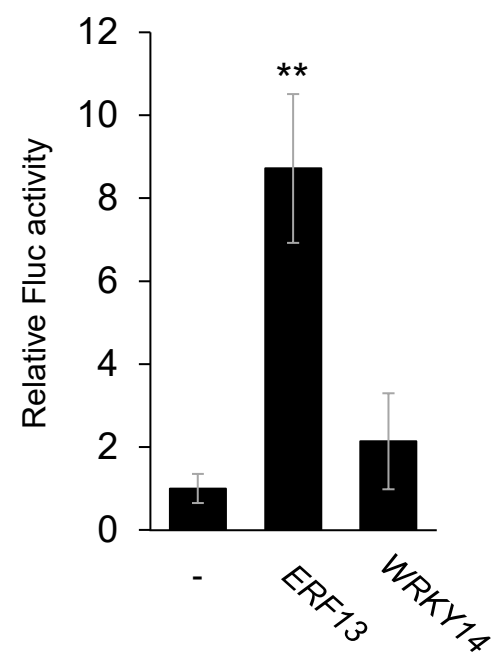


Fig. S1



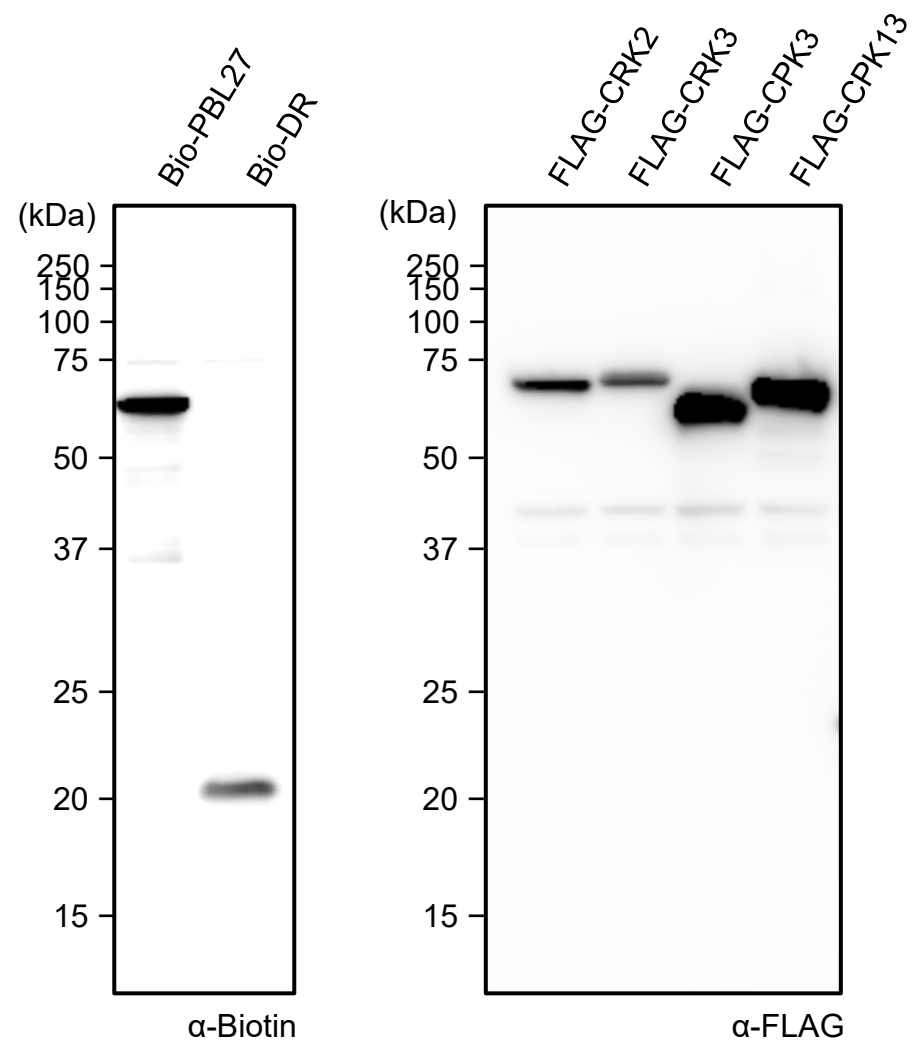


Fig. S3

**Figure S1.** Interactions of PBL27 and CPKs. A pair of FLAG-tagged CPK3 or CPK13 (CPK3-FLAG or CPK13-FLAG) and HA-tagged PBL27 (PBL27-HA) were expressed in *Nicotiana benthamiana* leaf cells. Total proteins extracted from the leaves were immunoprecipitated using anti-FLAG-tag magnetic beads, subjected to SDS-PAGE, and probed with anti-HA or anti-FLAG antibody as a primary antibody. Arrowheads indicate the predicted target signals.

**Figure S2.** Transient activation of a firefly luciferase reporter gene under the control of *PDF1.2* promoter according to coexpression with or without (-) *ERF13* or *WRKY14* in arabidopsis wild-type leaf protoplasts. Data represent the mean and standard error ( $n = 4$ ). Data marked with asterisks are significantly different from those obtained without *ERF13* or *WRKY14* (-), based on an ANOVA with Holm's sequential Bonferroni post-hoc test (\*\*,  $P < 0.01$ ).

**Figure S3.** Recombinant proteins used for AlphaScreen. Immunoblotting of proteins for biotinylated (Bio)-dihydrofolate reductase and PBL27 (Bio-DR and Bio-PBL27, respectively) as well as FLAG-tagged CRK2, CRK3, CPK3 and CPK13 (FLAG-CRK2, FLAG-CRK3, FLAG-CPK3 and FLAG-CPK13, respectively) were synthesized using a cell-free system. Total proteins were subjected to 10% SDS-polyacrylamide gel electrophoresis (SDS-PAGE) and immunoblotted with the respective antibodies ( $\alpha$ -Biotin and  $\alpha$ -FLAG).