

Article

Long-term in situ conservation drove microevolution of Solina d'Abruzzo wheat on adaptive, agronomic and qualitative traits

Caterina Morcia¹, Riccardo De Flaviis², Valeria Terzi¹, Maria Eugenia Gasparelli¹, Roberta Ghizzoni¹, Franz-W. Bader¹, Fulvia Rizza¹, Veronica Santarelli², Giorgio Tumino³, Giampiero Sacchetti^{2*}

¹Consiglio per la Ricerca in Agricoltura e l'Analisi dell'Economia Agraria—Centro di Ricerca Genomica e Bioinformatica (CREA-GB), Via San Protaso 302, 29017 Fiorenzuola d'Arda, Italy

²Department of Bioscience and Technology for Food, Agriculture and Environment, University of Teramo, Via R. Balzarini 1, 64100 Teramo, Italy

³Plant Breeding, Wageningen Plant Research, Wageningen University & Research, Droevendaalsesteeg 1, 6708 PB Wageningen, The Netherlands

Author to whom correspondence should be addressed.

* Correspondence: gsacchetti@unite.it; Tel.: +39 0861 266977

Supplementary Information

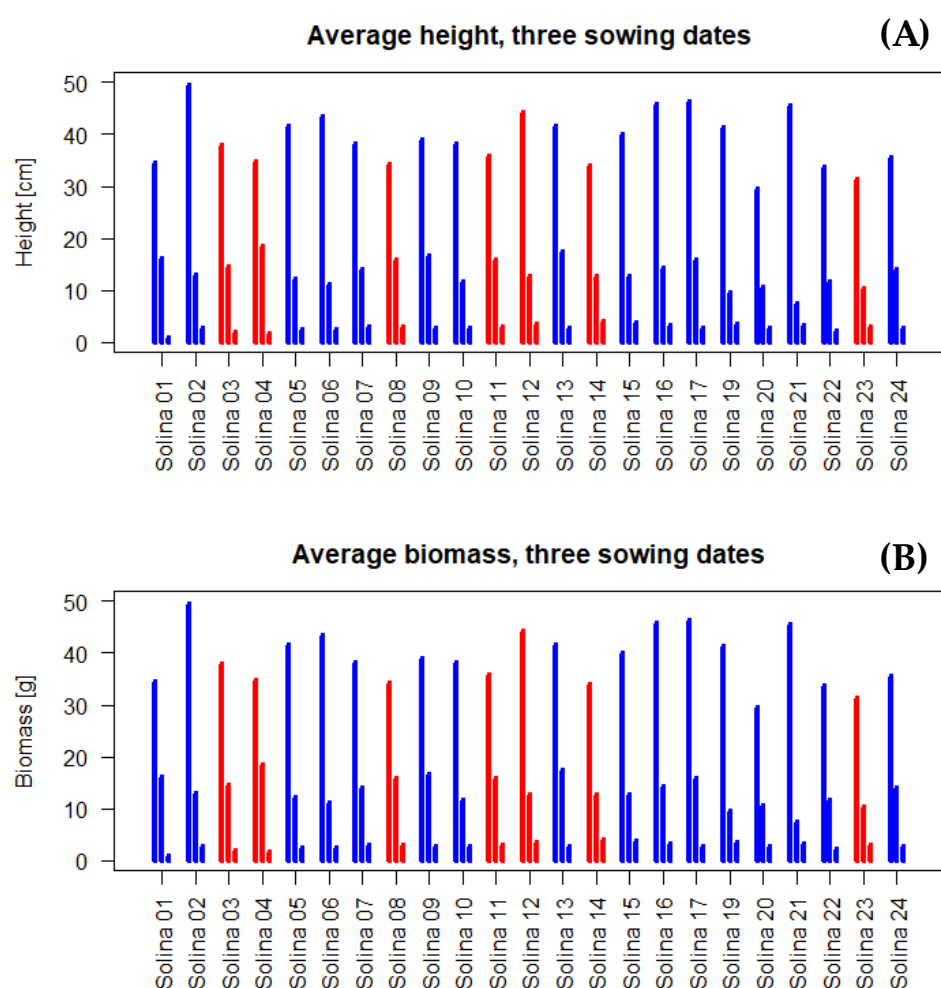


Figure S1. (A), Plant height [cm], (B), Biomass [g], bars from left to right correspond to sowing in November, February, and June, the color of the bars indicates membership to the red and blue clusters according to De Flaviis et al. [5].

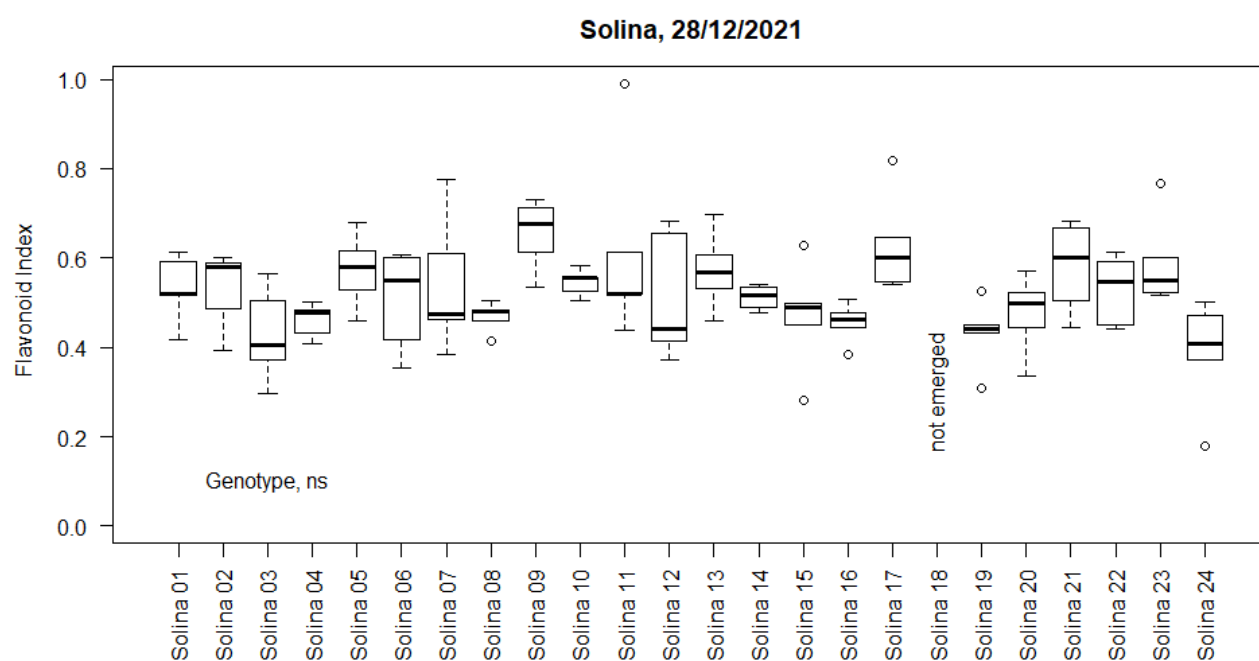


Figure S2. Duallex flavonoid index measured at December 28th 2021, i.e. at DAI 21.

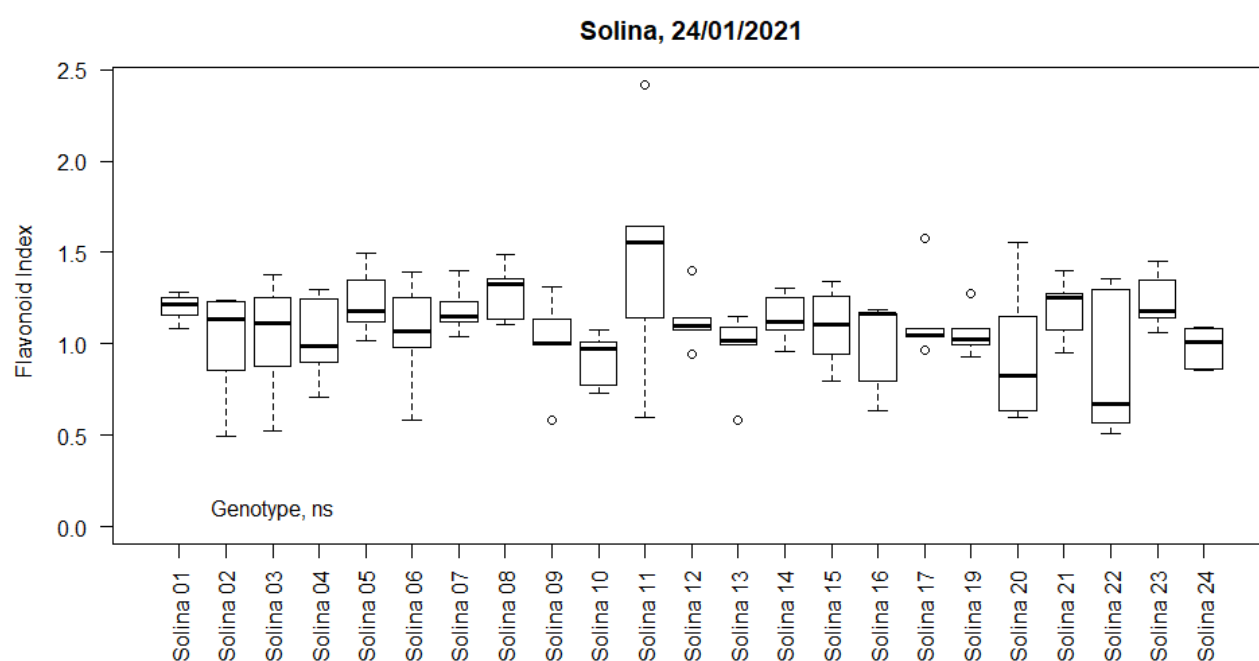


Figure S3. Duallex flavonoid index measured at January 24th 2022, i.e. at DAI 48.

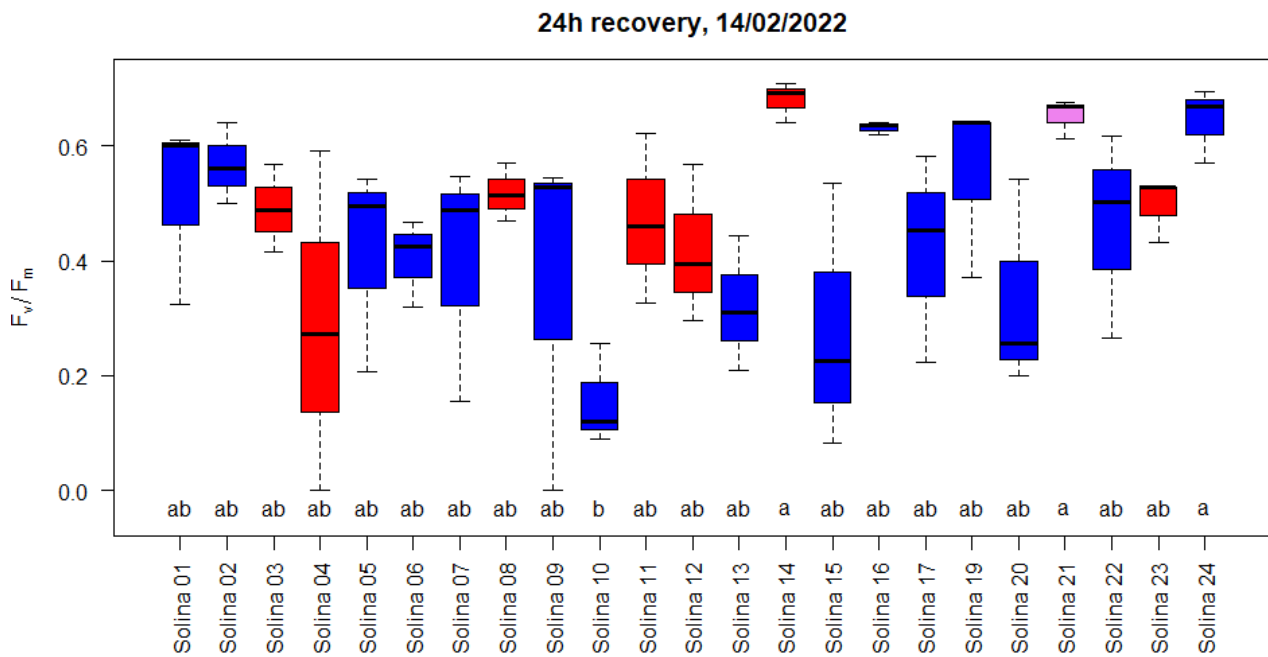


Figure S4. F_v/F_m , an indicator of freezing damage to PSII, measured after freezing stress at $-14\text{ }^{\circ}\text{C}$ and 24 h of recovery under acclimation conditions. The first experiment was on cut leaves. The color of the boxes indicates membership to the red and blue clusters, according to De Flaviis et al. [5], with population 21 belonging to the blue cluster but closest to the red cluster shown in purple.

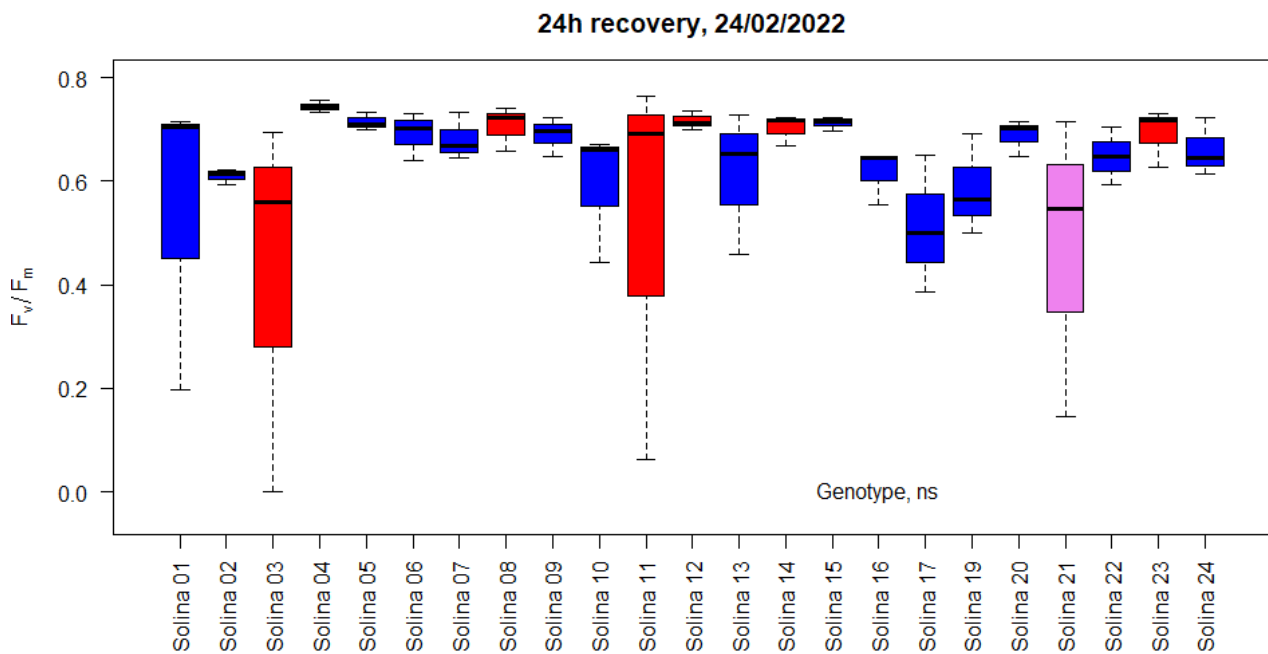


Figure S5. F_v/F_m , an indicator of freezing damage to PSII, measured after freezing stress at $-14\text{ }^{\circ}\text{C}$ and 24 h of recovery under acclimation conditions. The first experiment was on cut leaves. The color of the boxes indicates membership to the red and blue clusters according to De Flaviis et al. [5], with population 21 belonging to the blue cluster but closest to the red cluster shown in purple.