

Figure S1. Endophytic isolates with antagonistic activity against *Phytophthora infestans* T30-4 *in vitro*.

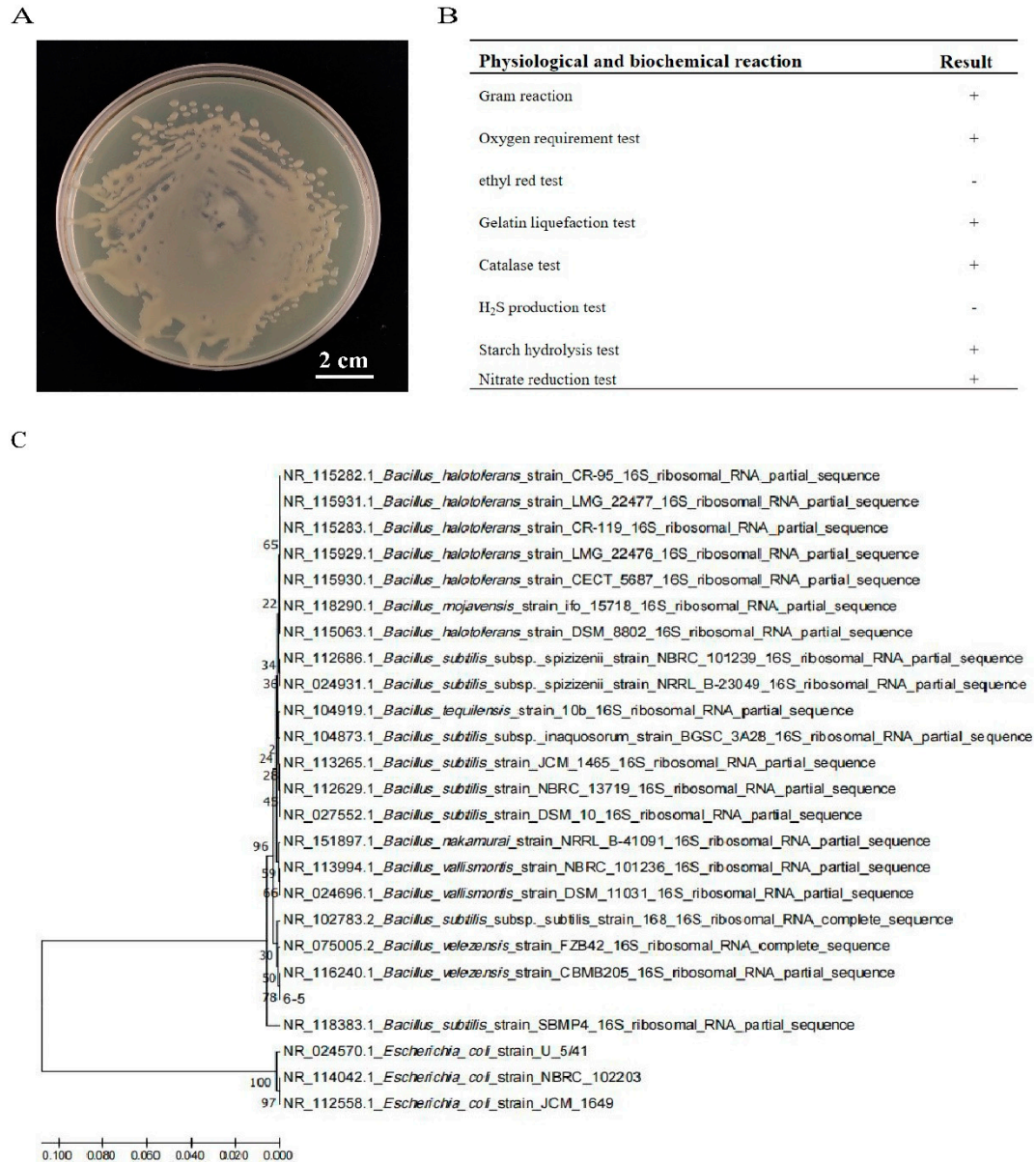


Figure S2. Identification of endophyte 6-5. (A) Colony characteristics of 6-5; (B) Physiological and biochemical characteristics of 6-5, + indicates a positive reaction, - indicates a negative reaction; (C) The phylogenetic tree of 6-5.