

Supplementary material

for

Beta vulgaris L.—A Source with a Great Potential in the Extraction of Natural Dyes Intended for the Sustainable Dyeing of Wool

Vasilica Popescu ^{1,*}, Alexandra Cristina Blaga ², Dan Cașcaval ² and Andrei Popescu ³

¹ Department of Chemical Engineering in Textiles and Leather, Faculty of Industrial Design and Business Management, “Gheorghe Asachi” Technical University of Iasi, 700050 Iasi, Romania

² Department of Organic, Biochemical and Food Engineering, “Cristofor Simionescu” Faculty of Chemical Engineering and Environmental Protection, “Gheorghe Asachi” Technical University of Iasi, 700050 Iasi, Romania; alexandra-cristina.blaga@academic.tuiasi.ro (A.C.B.); dan.cascaval@academic.tuiasi.ro (D.C.)

³ Department of Mechanical Engineering, Mechatronics and Robotics, Faculty of Mechanical Engineering, “Gheorghe Asachi” Technical University of Iasi, 700050 Iasi, Romania; andrei.popescu@academic.tuiasi.ro

* Correspondence: vasilica.popescu@academic.tuiasi.ro

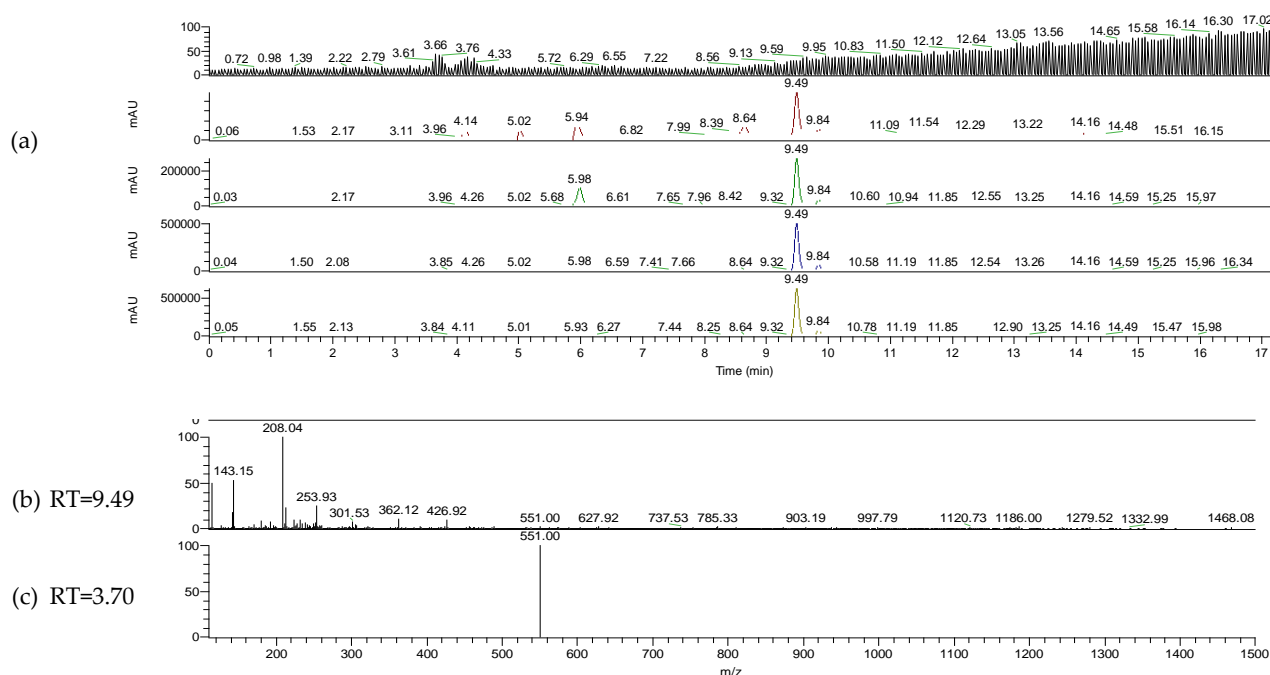


Figure S1. HPLC chromatogram (a) and mass spectra (b and c) of the compounds identified in the Rex1 extract.

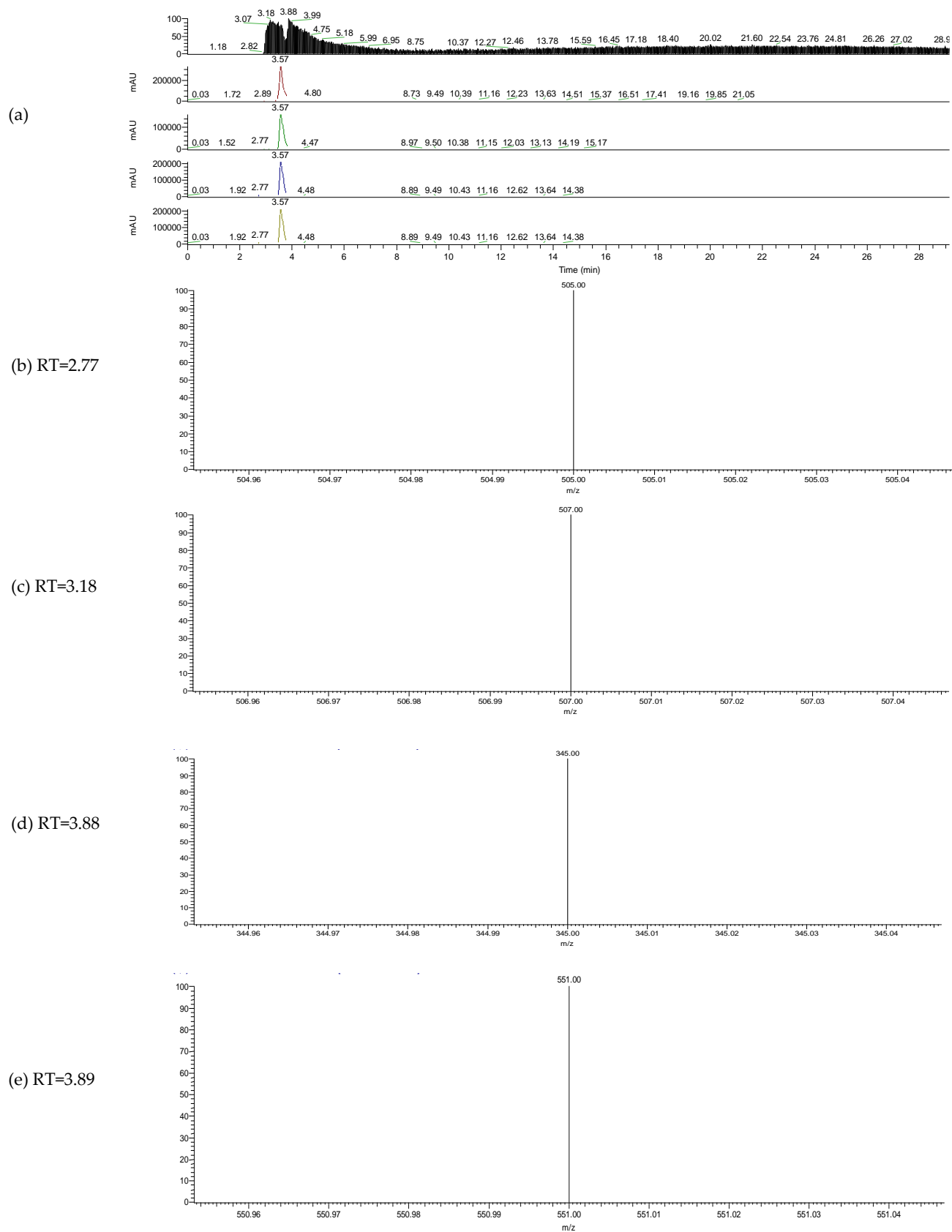


Figure S2. HPLC chromatogram (a) and mass spectra (b-e) of the compounds identified in the PresEx1 extract.