

TMHMM posterior probabilities for *AcPINs/AcPILSs*

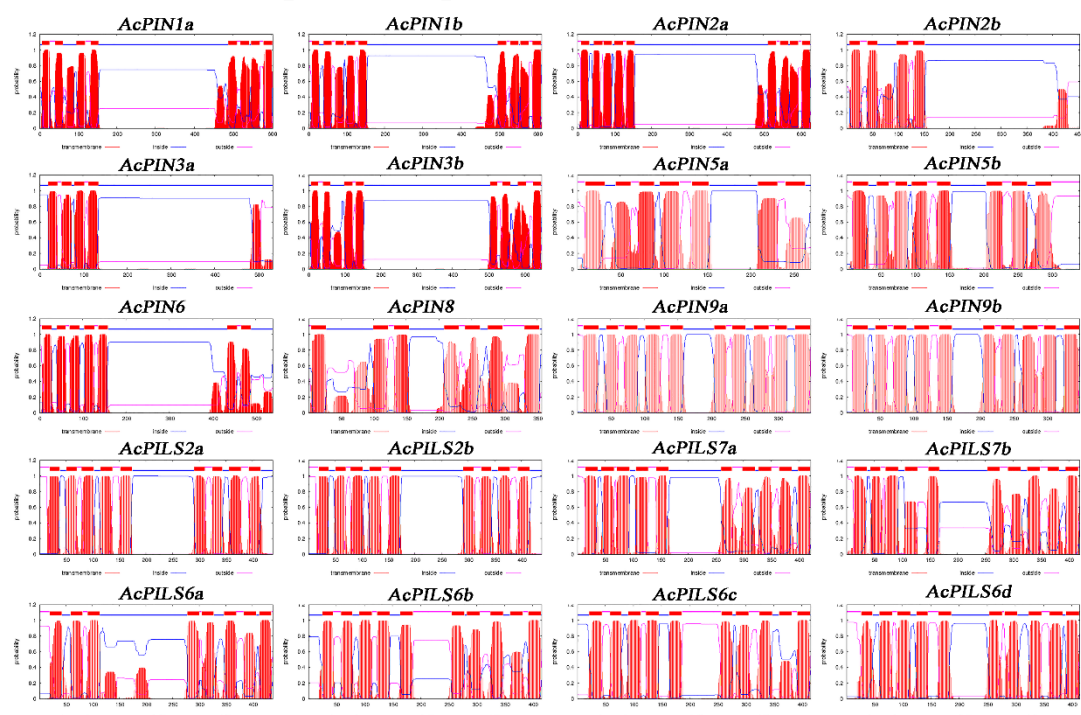


Figure S1. Predicted topology PIN/PILS proteins. These predictions were made by HMMTOP 2.0.

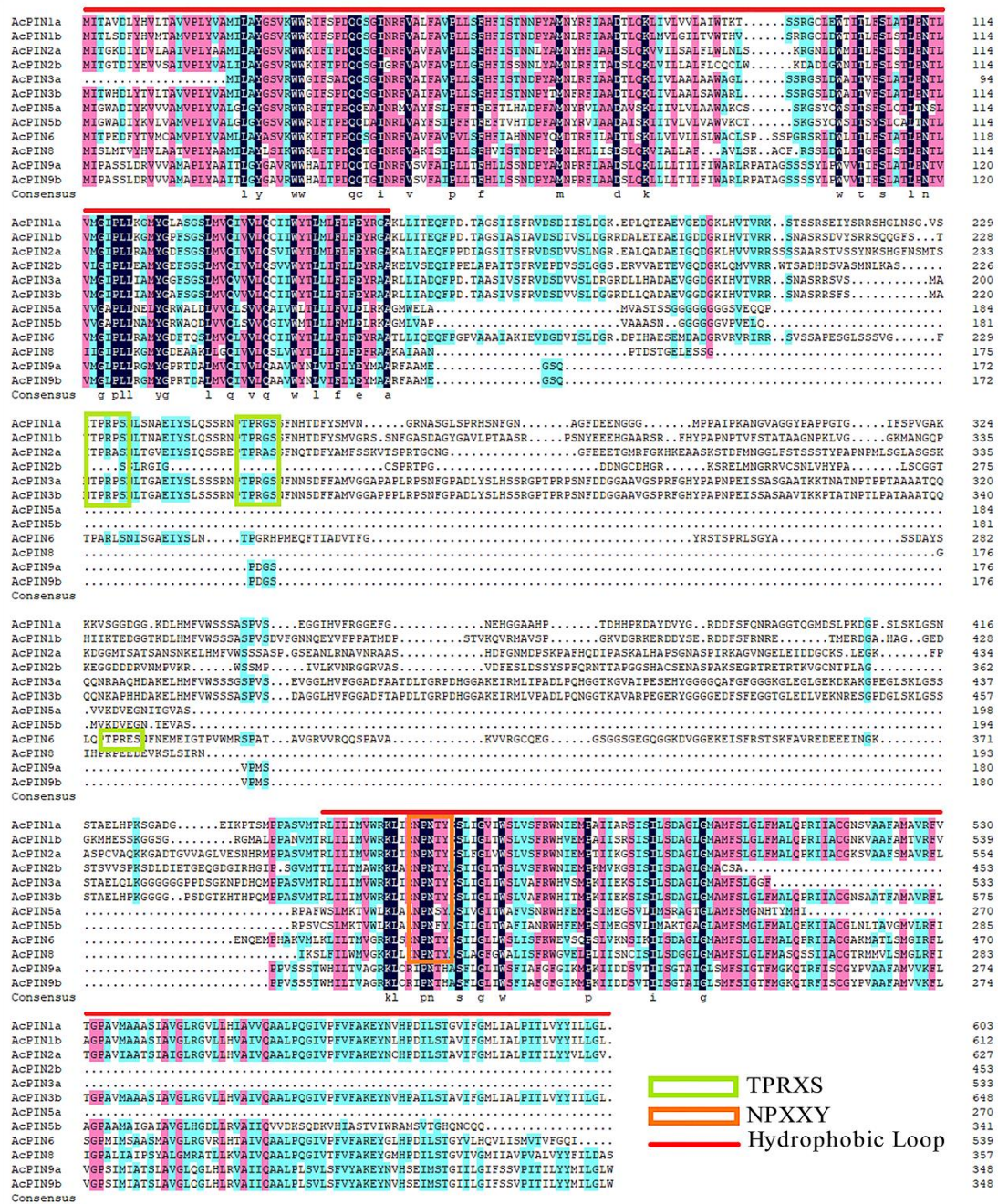


Figure S2. AcPIN genes amino acid sequence multiple alignment. The red line indicates a conserved transmembrane domain. The possible functional sites or elements are encircled by a box.

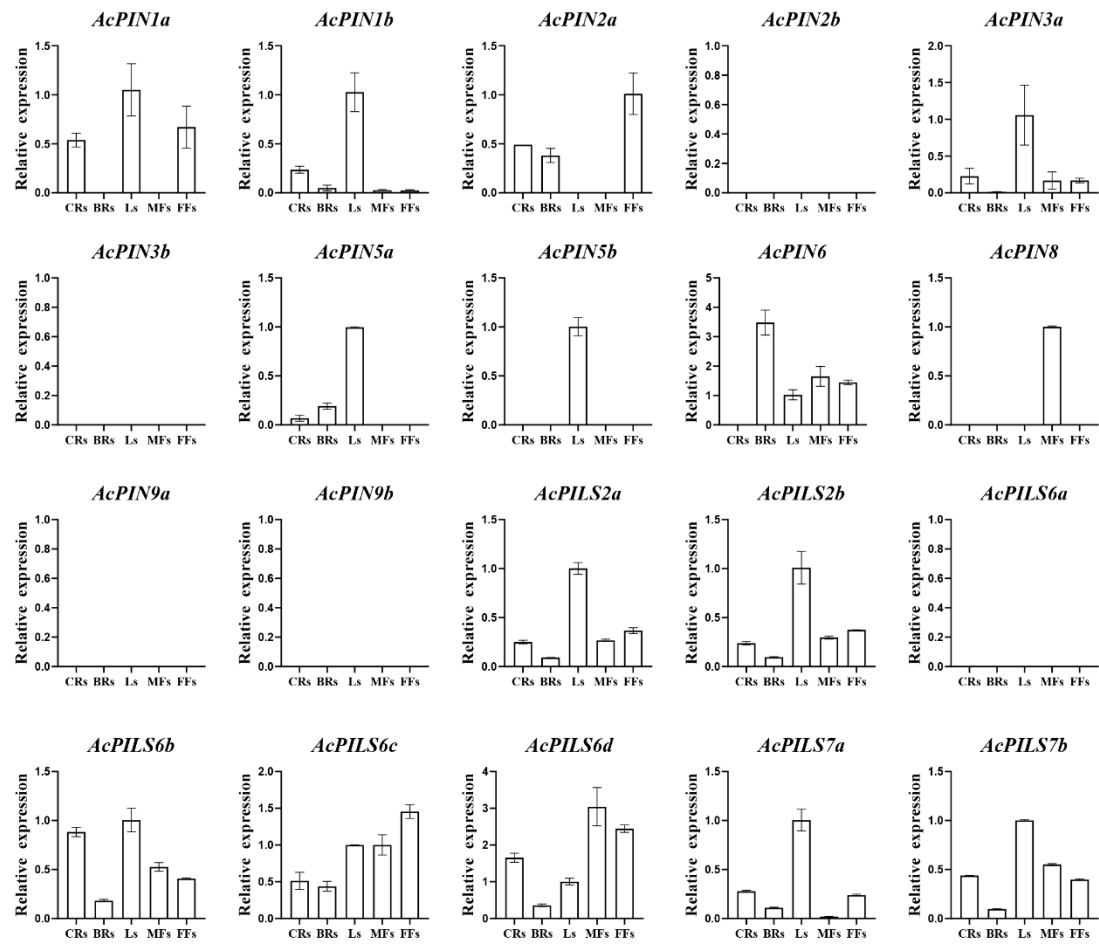


Figure S3. The *AcPIN*/*AcPILS* genes expression pattern in different *A. catechu* organs for qRT-PCR. qRT-PCR experiments were performed on three biological replicates. Error bars represent means \pm SE from three independent experiments.

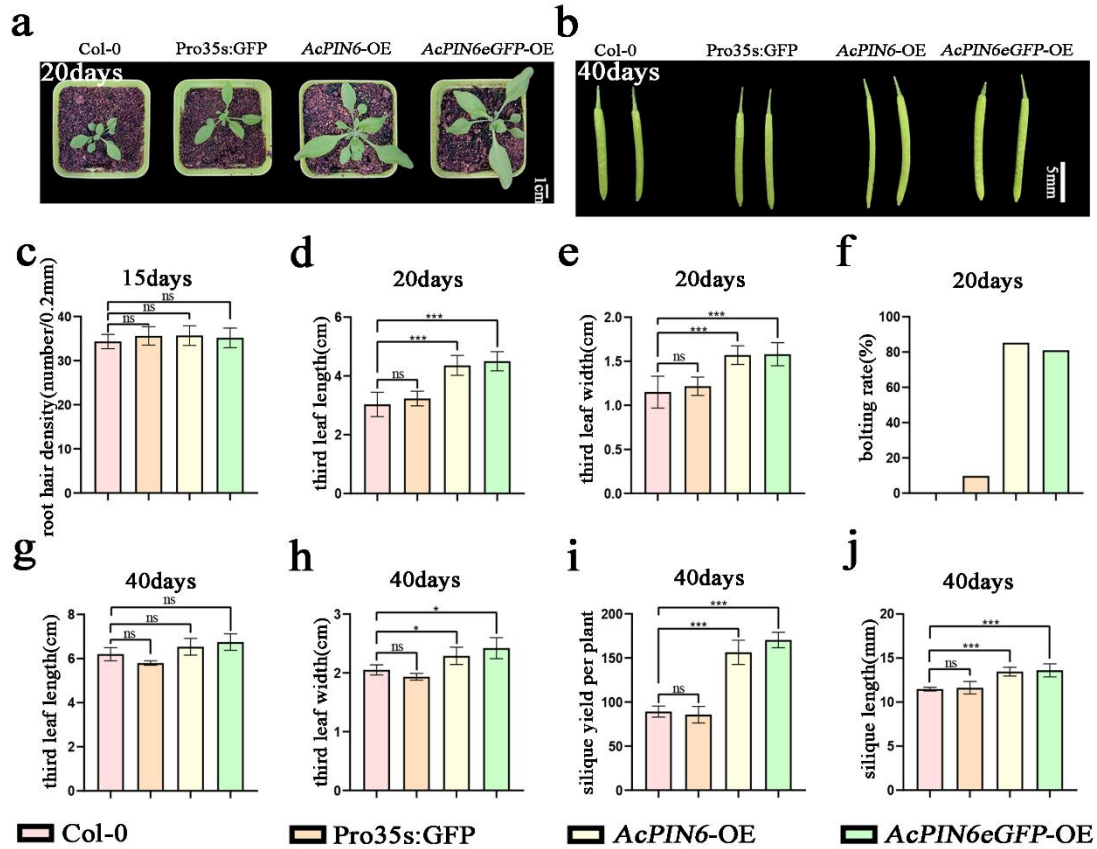


Figure S4. Phenotype of *Arabidopsis* overexpressing *AcPIN6*. (a). *AcPIN6* overexpression phenotype in *Arabidopsis* grows for 20 days. (b). *AcPIN6* overexpressed a 40-day silique phenotype in *Arabidopsis*. (c). root hair density(number/0.2mm) in 15 days. (d-f). leaf length, leaf width and bolting rate in 20 days. (g-j). leaf length(cm), leaf width(cm), silique yield per plant and silique length(mm) in 40 days. Error bars represent means \pm SE from three independent experiments (ns: $p > 0.05$; * $p < 0.05$; ** $p < 0.01$; *** $p < 0.001$).