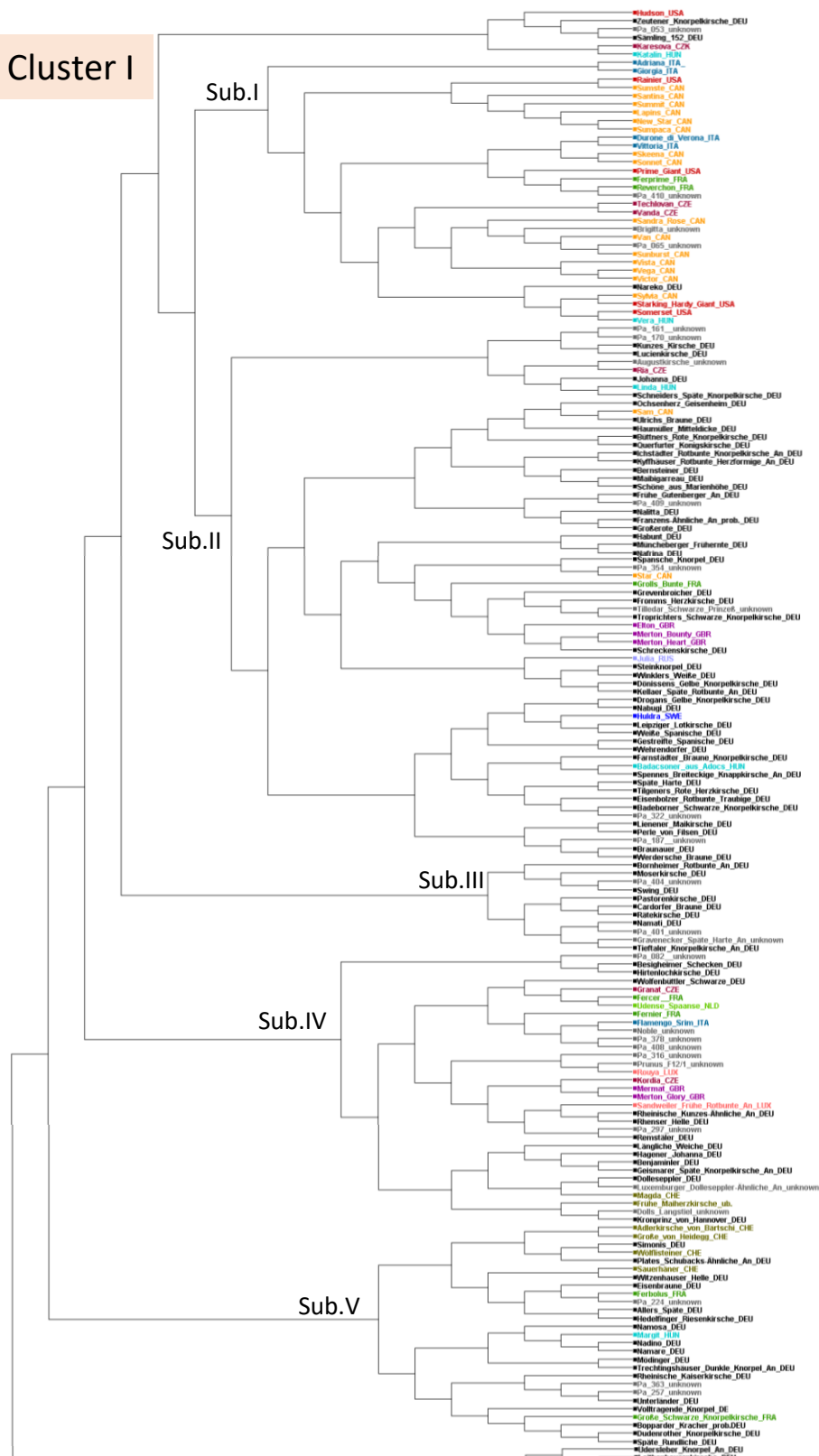


Cluster I

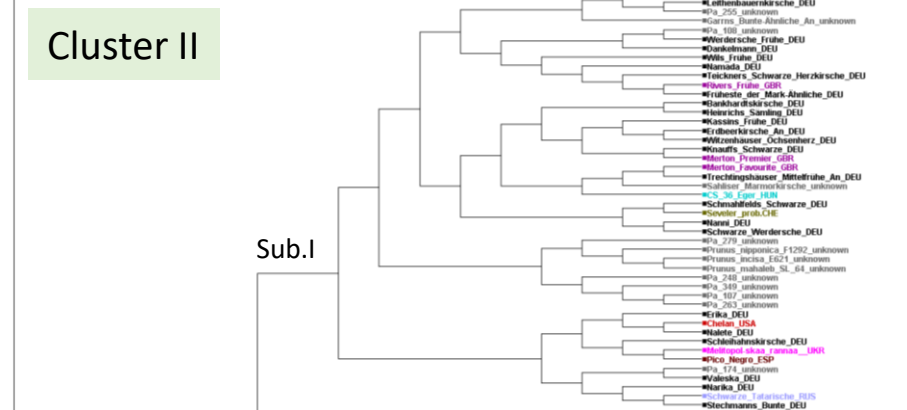


Foreign cultivars,
mainly from Canada

Mainly German
cultivars, from Middle
East and East
Germany

Foreign European
cultivars and cultivars
from North, West and
South Germany

Cluster II



German cultivars
(middle-eastern), wild
species, cultivars from
Great Britain and
Eastern Europe



German cultivars
mainly from the
North (Altes Land),
South and West
Germany

French cultivars and
cultivars from
Dresden-Pillnitz,
Germany

Foreign cultivars
mainly from USA and
Great Britain,
German cultivars