

Characterizing tetraploid populations of *Actinidia chinensis* for kiwifruit genetic improvement

Zhi Wang ^{1,2}, Guangming Hu ^{2,3}, Zuozhou Li ², Caihong Zhong ^{2,*} and Xiaohong Yao ^{2,*}

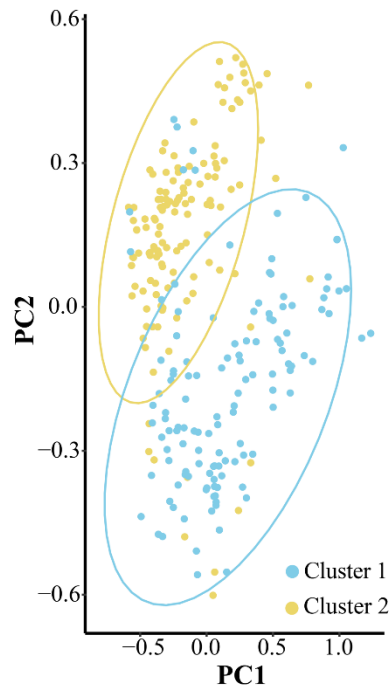


Figure S1. Principal coordinate analysis (PCoA) of *A. chinensis* based on 40 SSR markers.

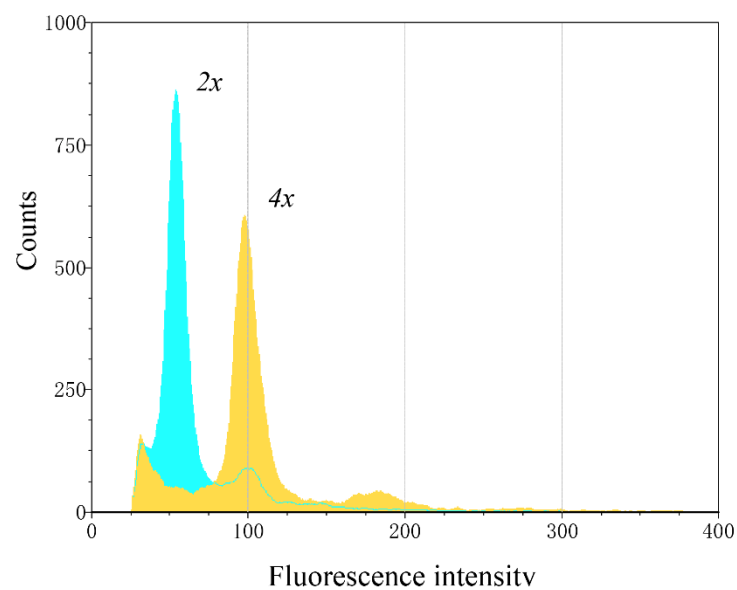


Figure S2. Schematic diagram of flow cytometric histogram of DAPI-stained nuclei of tetraploid *A. chinensis* (4x) analyzed simultaneously with the internal standard *Actinidia chinensis* cv. 'Hongyang' (2x).