

Supplementary Materials

Both Adaptability and Endophytic Bacteria Are Linked to the Functional Traits in the Invasive Clonal Plant *Wedelia trilobata*

Ying-Hao Mei ^{1,2}, Xu Li ², Jian-Yu Zhou ², Fang-Li Kong ², Shan-Shan Qi ³, Bin Zhu ⁴, Misbah Naz ², Zhi-Cong Dai ^{1,2,5,*} and Dao-Lin Du ^{1,2}

¹ School of Emergency Management, Jiangsu University, Zhenjiang 212013, China

² School of the Environmental and Safety Engineering, Jiangsu University, Zhenjiang 212013, China

³ School of the Agricultural Engineering, Jiangsu University, Zhenjiang 212013, China

⁴ Department of Biology, University of Hartford, West Hartford, CT 06117, USA

⁵ Jiangsu Collaborative Innovation Center of Technology and Material of Water Treatment, Suzhou University of Science and Technology, Suzhou 215009, China

* Correspondence: daizhicong@163.com

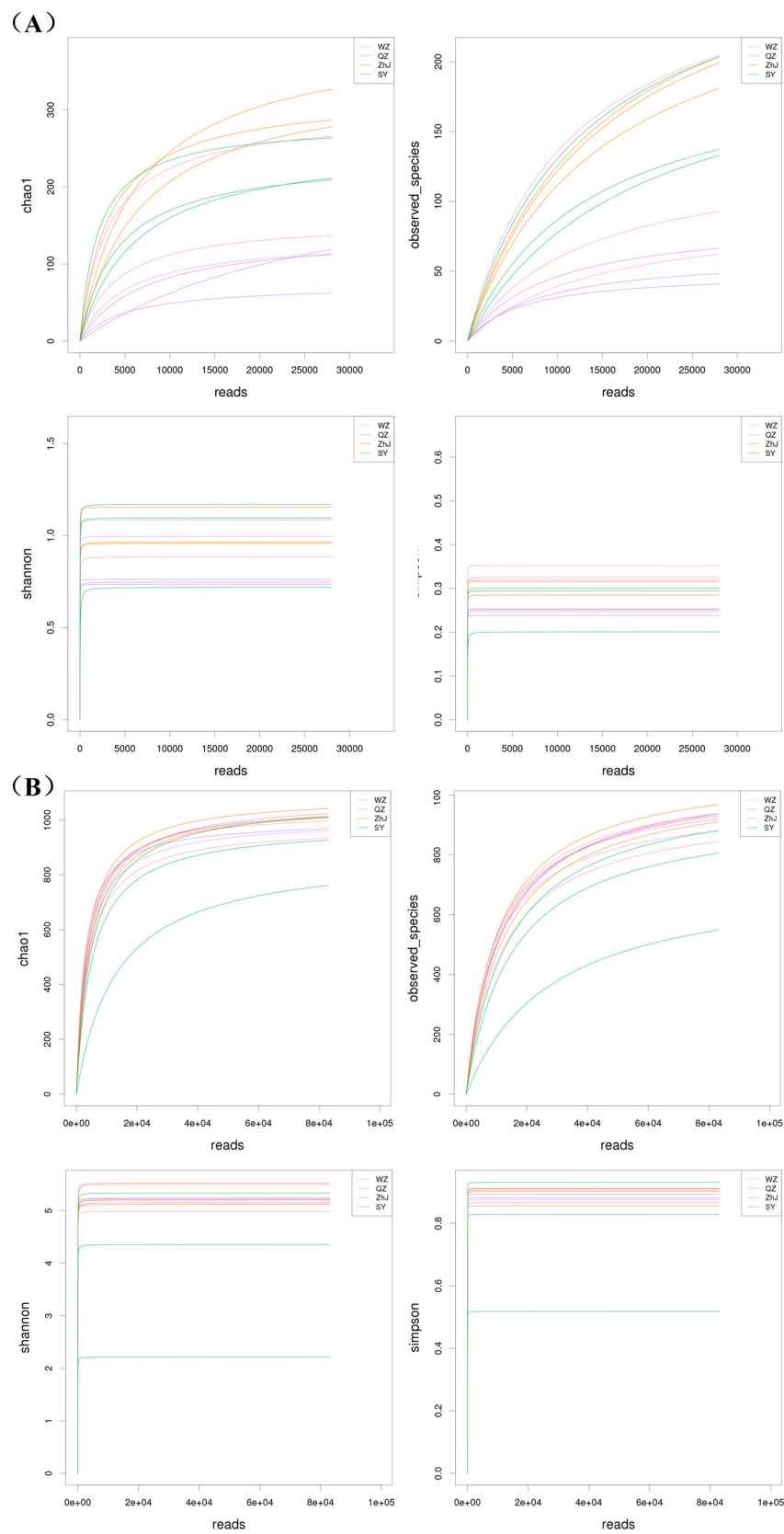


Figure S1: Rarefaction curve of endophytic bacteria (A) and fungi (B) in four populations of *W. trilobata*.

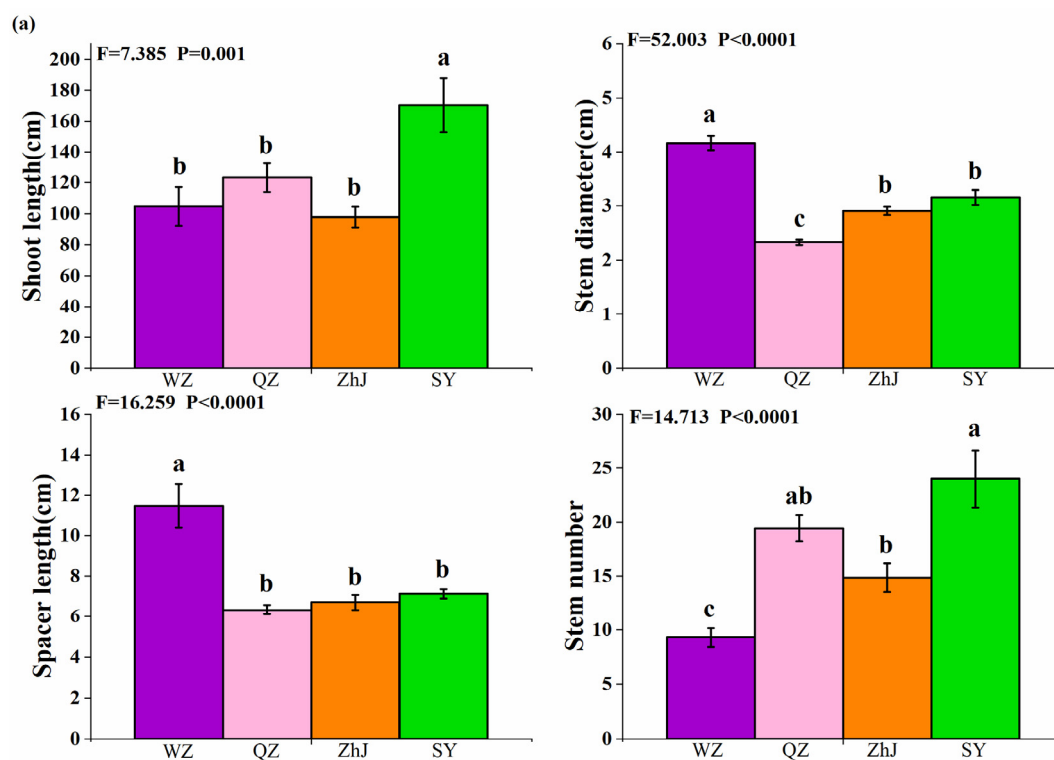


Figure S2: Phenotypic growth index of four populations of *W. trilobata* collecting from different regions (WZ, Wenzhou City; QZ, Quanzhou City; ZhJ, Zhanjiang City; SY, Sanya City). Bars (mean with standard error, n = 7) with different lowercase letters represent statistically significant differences ($P \leq 0.05$).

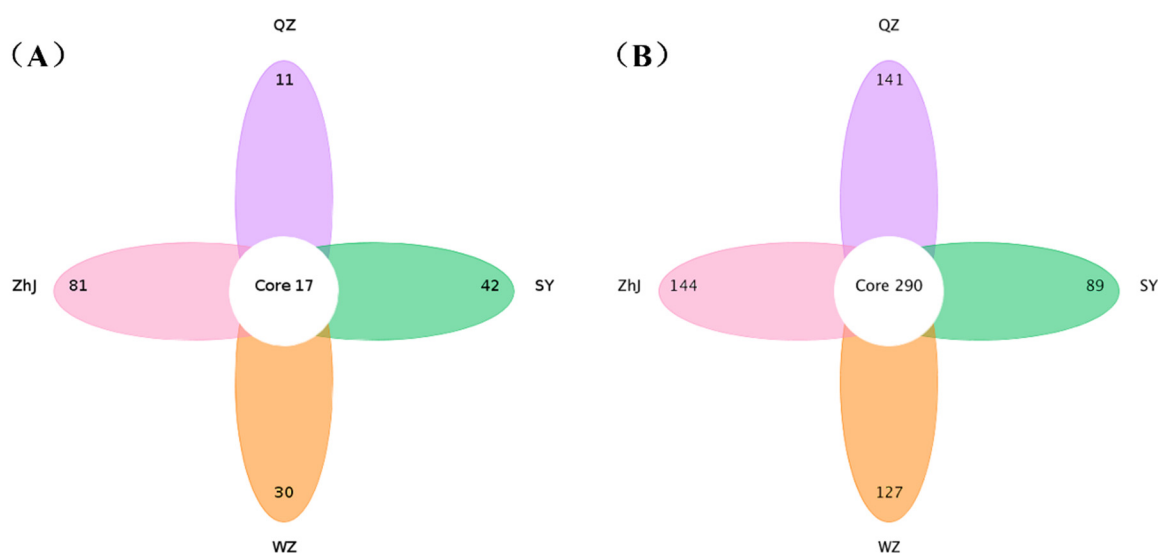


Figure S3. Petal pattern analysis of endophytic bacteria (A) and fungi (B) in four populations of *W. trilobata*.

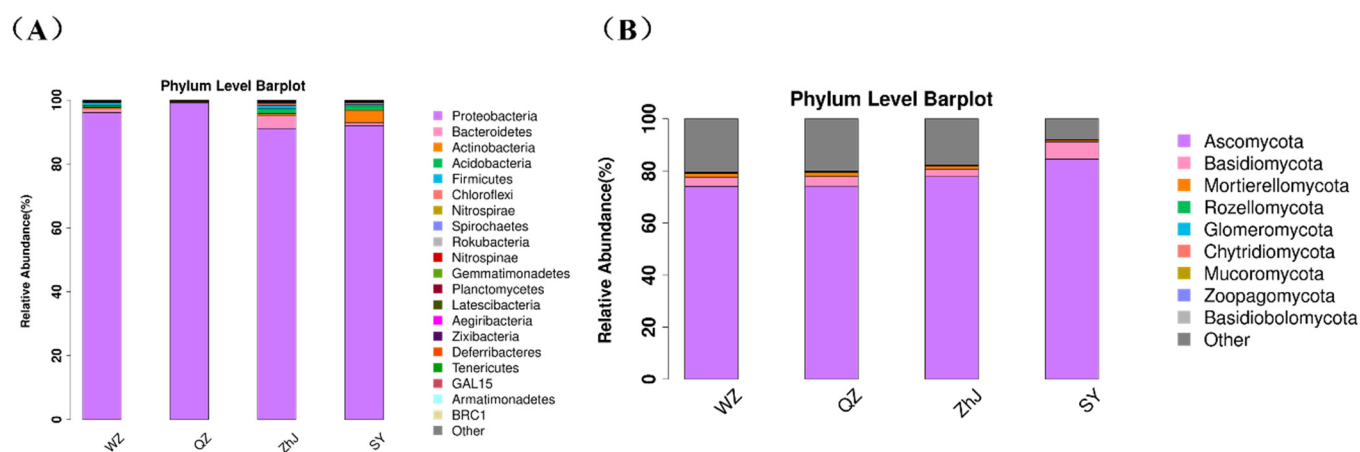


Figure S4. The relative abundance of endophytic bacterial (A) and fungal (B) communities of four populations of *W. trilobata* at the phylum level.

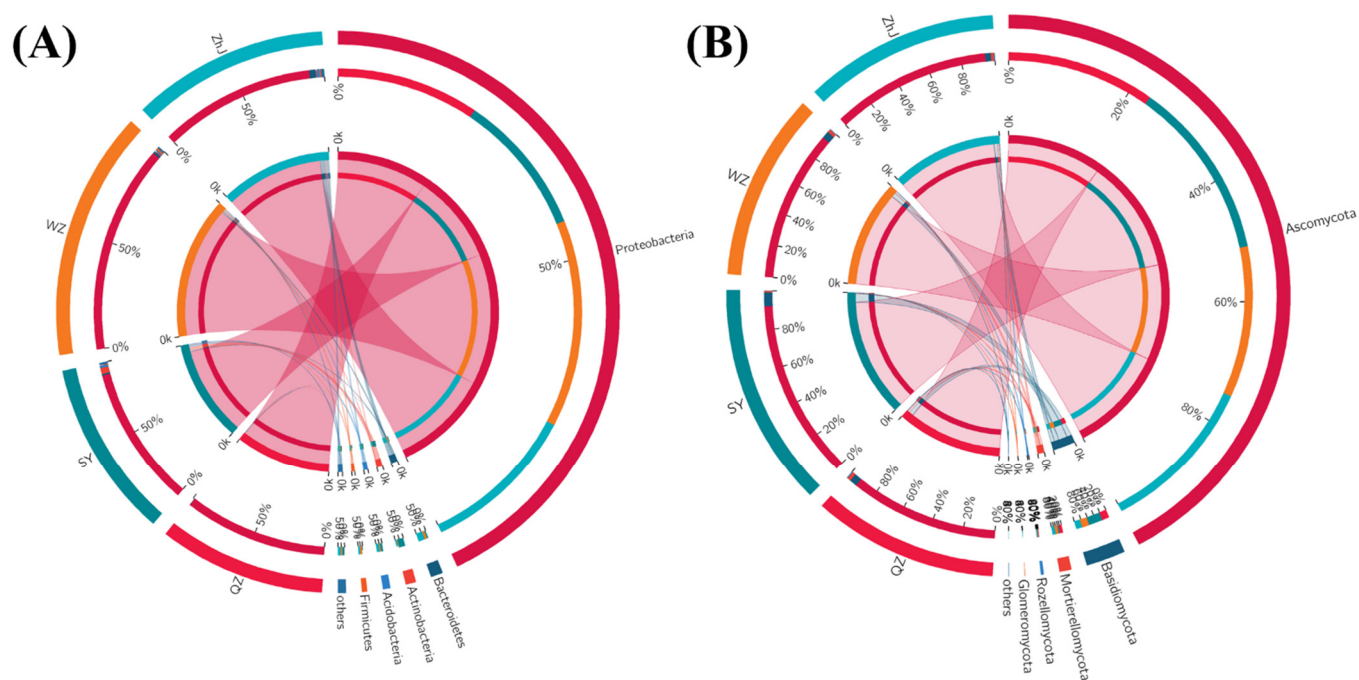


Figure S5. Circos analysis of endophytic bacteria (A) and fungi (B) in four populations of *W. trilobata* at phylum level.

Table S1. Sequencing evaluation of bacterial and fungal community in four populations of *W. trilobata*.

	Group	Clean_tags	Effective_tags	OTUs	Goods_coverage
Bacterial	WZ	201995	194982	478	0.998
	QZ	249494	241884	268	0.999
	ZhJ	280307	267232	860	0.997
	SY	199289	191401	662	0.998
Fungal	WZ	365075	348583	2820	0.998
	QZ	301155	286795	2857	0.998
	ZhJ	333131	316938	2947	0.998
	SY	379471	369108	2483	0.997