

## Supplementary material

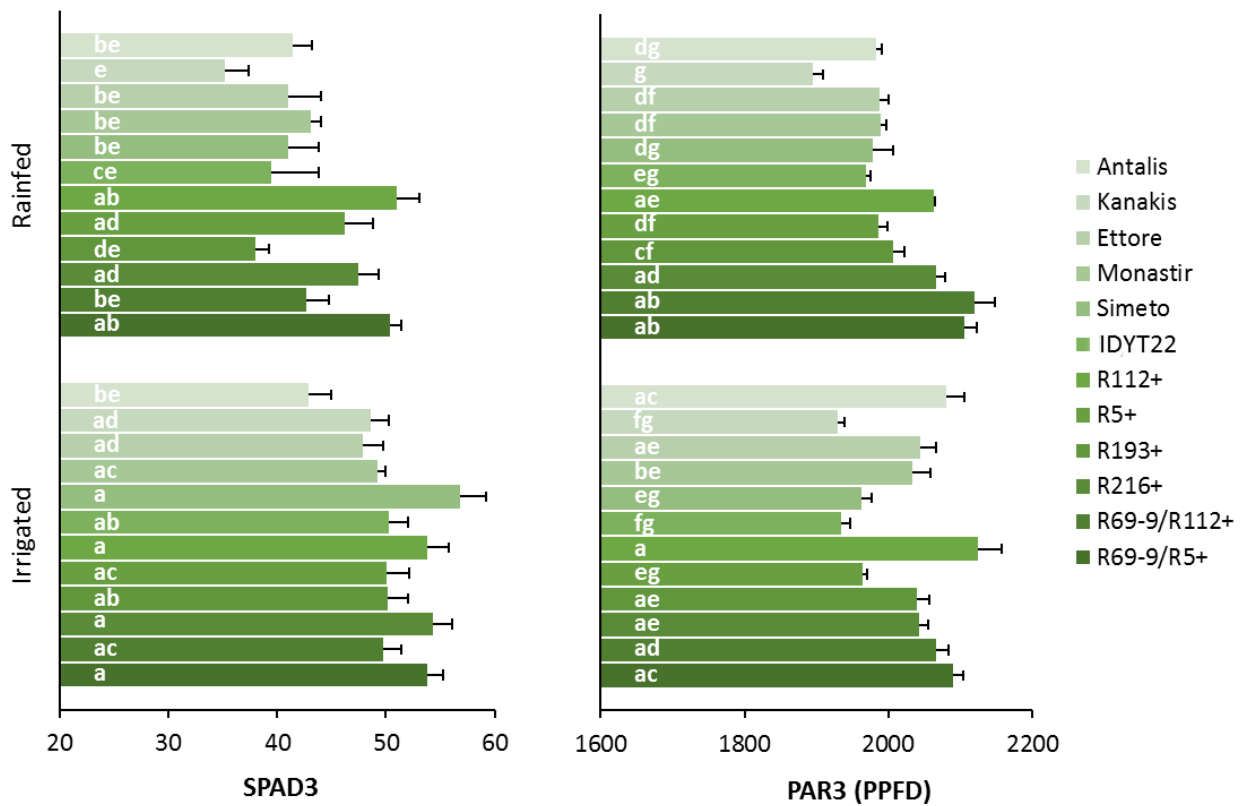
### Small “nested” introgressions from wild *Thinopyrum* species conferring effective resistance to *Fusarium* diseases positively impact durum wheat yield potential

Kuzmanović L\*, Giovenali G, Ruggeri R, Rossini F, Ceoloni C.

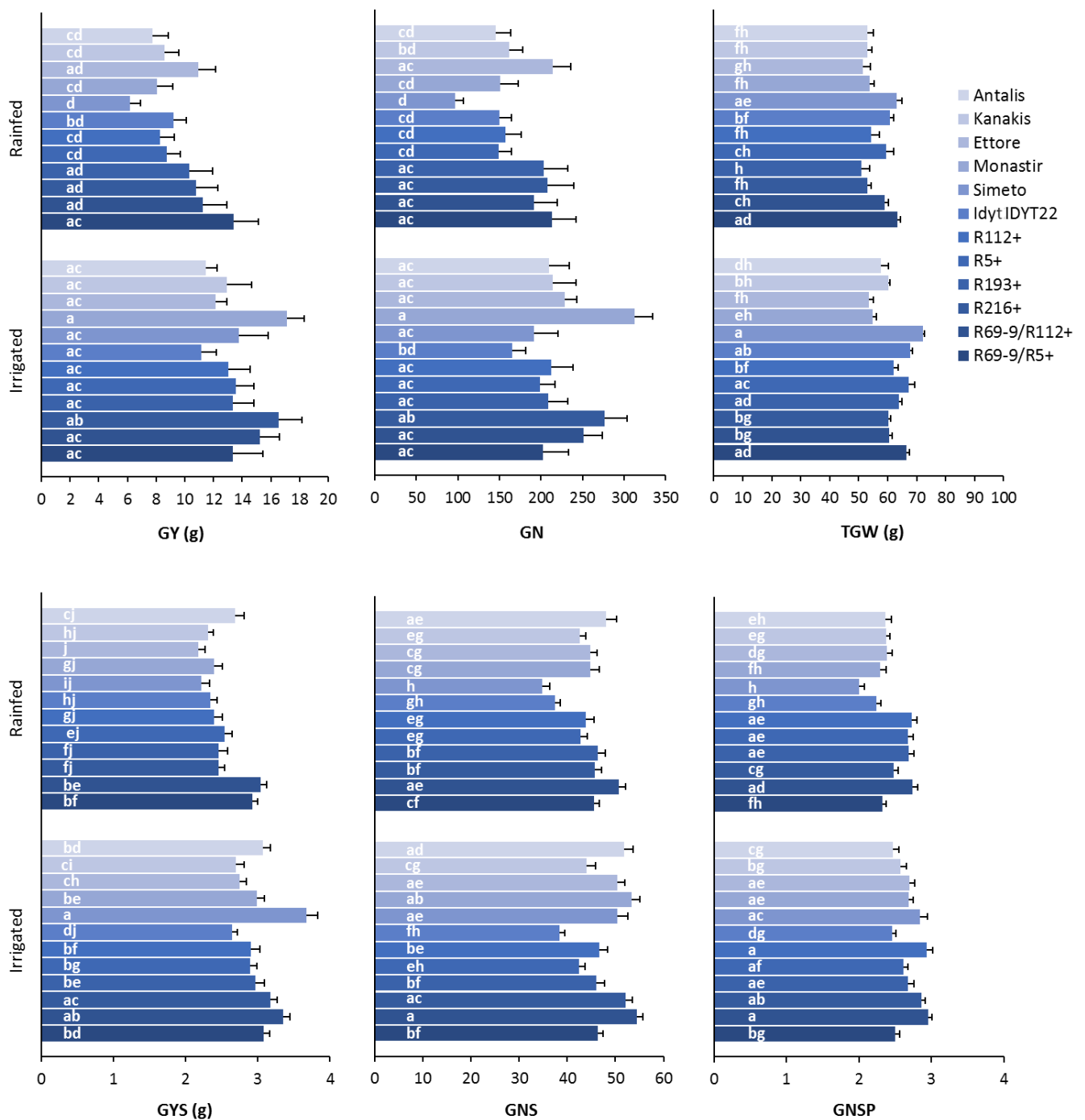
**Table S1.** Means  $\pm$  standard errors of yield and yield-related traits recorded in 2019 and 2020 seasons for 7e1<sub>1</sub>L+7e1<sub>2</sub>L recombinants (R193+, R216+) and their null segregates (R193-, R216-) under rainfed growing conditions.

RL	GY (g)	TILN	GN	TGW (g)	GYS (g)	SPN	GNS	GNSP
<b>2019</b>								
R193+	17.5 $\pm$ 1.4	11.3 $\pm$ 0.9	354.7 $\pm$ 20.7	49.1 $\pm$ 1.9	3.01 $\pm$ 0.10	18.2 $\pm$ 0.3	53.0 $\pm$ 1.8	2.9 $\pm$ 0.1
R193-	18.1 $\pm$ 1.8	12.0 $\pm$ 1.9	416.9 $\pm$ 45.9	44.3 $\pm$ 2.4	3.05 $\pm$ 0.15	18.5 $\pm$ 0.4	57.7 $\pm$ 2.7	3.1 $\pm$ 0.1
R216+	11.8 $\pm$ 0.9	10.3 $\pm$ 0.9	268.8 $\pm$ 18.1	43.9 $\pm$ 2.2	2.20 $\pm$ 0.08	17.2 $\pm$ 0.3	41.7 $\pm$ 1.1	2.4 $\pm$ 0.04
R216-	13.6 $\pm$ 1.9	12.3 $\pm$ 1.1	315.9 $\pm$ 36.6	42.7 $\pm$ 1.7	2.69 $\pm$ 0.10	18.3 $\pm$ 0.3	52.4 $\pm$ 1.5	2.9 $\pm$ 0.1
<b>2020</b>								
R193+	10.3 $\pm$ 1.6	4.0 $\pm$ 0.5	203.1 $\pm$ 29.1	51.1 $\pm$ 2.7	2.46 $\pm$ 0.12	17.1 $\pm$ 0.3	46.3 $\pm$ 1.7	2.7 $\pm$ 0.1
R193-	10.9 $\pm$ 1.1	4.3 $\pm$ 0.4	208.6 $\pm$ 17.4	52.6 $\pm$ 3.0	2.89 $\pm$ 0.13	18.8 $\pm$ 0.3	53.8 $\pm$ 1.5	2.9 $\pm$ 0.1
R216+	10.8 $\pm$ 1.5	5.5 $\pm$ 0.7	208.1 $\pm$ 31.1	53.0 $\pm$ 1.3	2.45 $\pm$ 0.08	18.5 $\pm$ 0.2	45.8 $\pm$ 1.4	2.5 $\pm$ 0.1
R216-	9.6 $\pm$ 1.2	4.3 $\pm$ 0.4	164.1 $\pm$ 20.2	58.9 $\pm$ 0.9	2.39 $\pm$ 0.11	16.8 $\pm$ 0.4	40.2 $\pm$ 1.7	2.4 $\pm$ 0.1

GY, grain yield/plant; TILN, tiller number/plant; GN, grain number/plant; TGW, 1000-grain weight; GYS, grain yield/spike; SPN, spikelet No./spike; GNS, grain No./spike; GNSP, grain No./spikelet; RL, recombinant line



**Figure S1.** Significant Genotype  $\times$  Irrigation effect on flag leaf physiological traits measured in 2020 under rainfed and irrigated conditions (SPAD3, chlorophyll content at 20 days post-anthesis; PAR3, photosynthetically active radiation of PSII at 20 days post-anthesis); bars represent standard errors of means; letters within histograms correspond to ranking of the Tukey test at  $p < 0.05$  level.



**Figure S2.** Significant Genotype  $\times$  Irrigation effect on yield-related traits measured in 2020 under rainfed and irrigated conditions (GY, grain yield/plant; GN, grain number/plant; TGW, 1000-grain weight; GYS, grain yield/spike; GNS, grain No./spike; GNSP, grain No./spikelet; bars represent standard errors of means; letters within histograms correspond to ranking of the Tukey test at  $p < 0.05$  level.