



Figure S1. Jazirat Al-Kawm Al-Akhdar (the green islet) which is located in Burullus Lake (northern of Nile Delta) in Egypt showing the populations of *Lycium schweinfurthii*.



Figure S2. The blooming of *L. schweinfurthii* during the spring season.



Figure S3. *L. schweinfurthii* branch showing leaves and immature fruits.

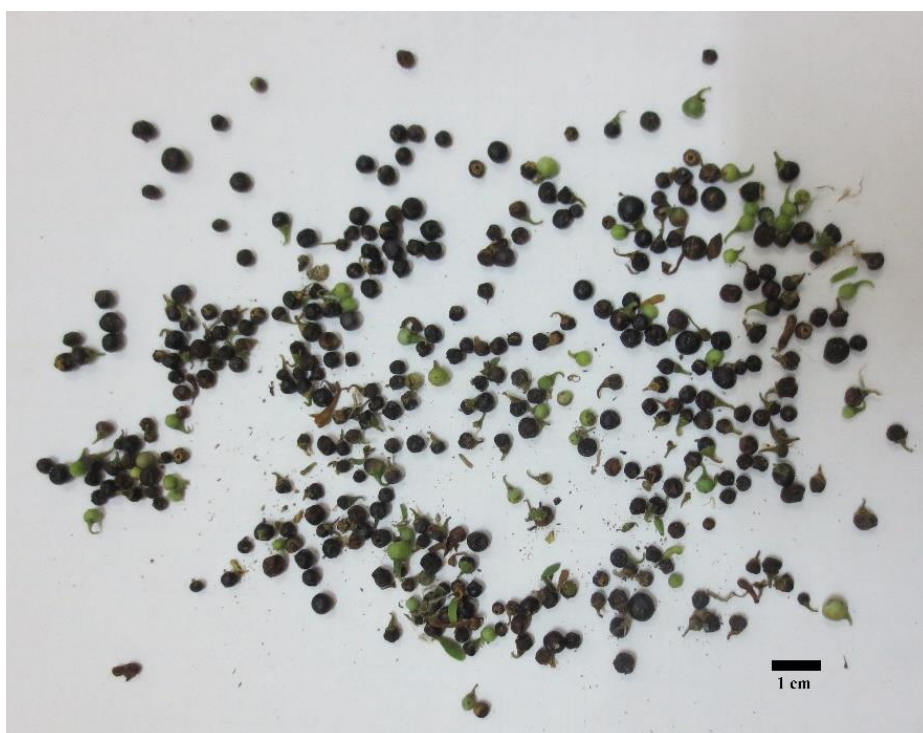
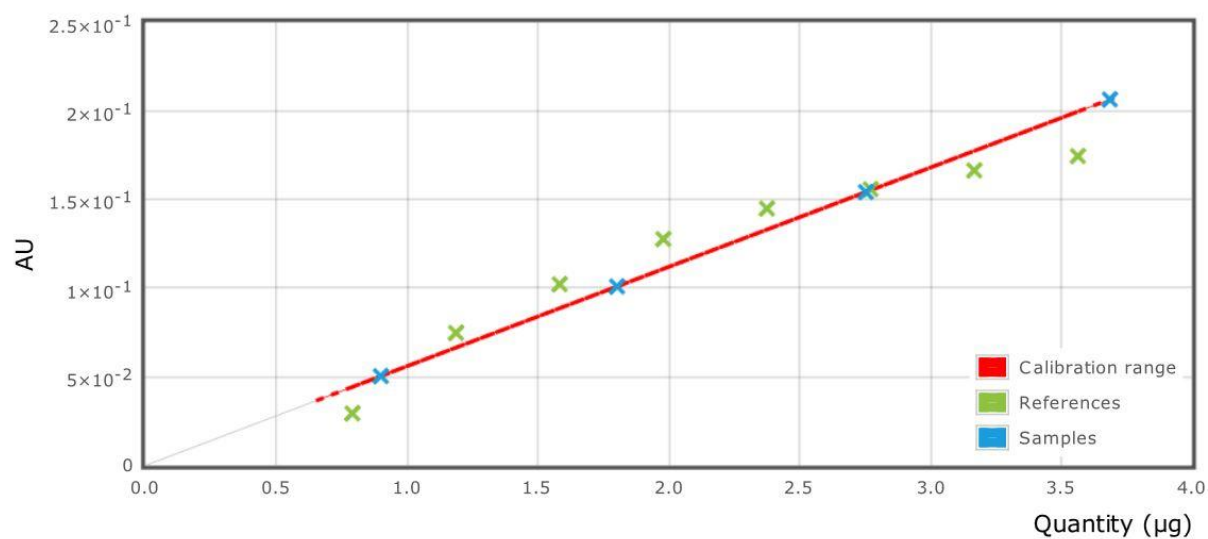


Figure S4. Ripe fruits of *L. schweinfurthii*.



**Figure S5.** Calibration range of the HPTLC analysis of micropropagated dry leaves' extract samples against a reference of ferulic acid  $400 \mu\text{g ml}^{-1}$ .