

Type of the Paper: Article

Energy Metabolites and Indicative Significance of α -Ketoglutarate and α -Ketoglutamamate in Assessing the Progression of Chronic Hepatoencephalopathy

Yevgeniya I. Shurubor^{1,*}, Andrey B. Krasnikov², Elena P. Isakova³, Yulia I. Deryabina³, Vladimir S. Yudin¹, Anton A. Keskinov¹, Boris F. Krasnikov^{1,4,*}

¹ Centre for Strategic Planning of FMBA of Russia, Pogodinskaya St., Bld.10, 119121 Moscow, Russia; EShurubor@cspmba.ru (Y.I.S.); VYudin@cspmba.ru (V.S.Y.); Keskinov@cspmba.ru (A.A.K.); BKrasnikov@cspmba.ru (B.F.K.)

² Independent Researcher, 24 Ivana Babushkina St., 117292 Moscow, Russia; kr-ab@yandex.ru (A.B.K.)

³ Bach Institute of Biochemistry, Research Center of Biotechnology of the Russian Academy of Sciences, Moscow 119071, Russia; elen_iss@mail.ru (E.P.I.); yul_der@mail.ru (Y.I.D.)

⁴ Department of Biochemistry and Molecular Biology, Faculty of Medicine, N.I. Pirogov Russian National Research Medical University, 1 Ostrovitianova Str., Moscow 117997, Russia; (B.F.K.)

* Correspondence: EShurubor@cspmba.ru (Y.I.S.) BKrasnikov@cspmba.ru (B.F.K.)

SUPPLEMENTARY MATERIALS

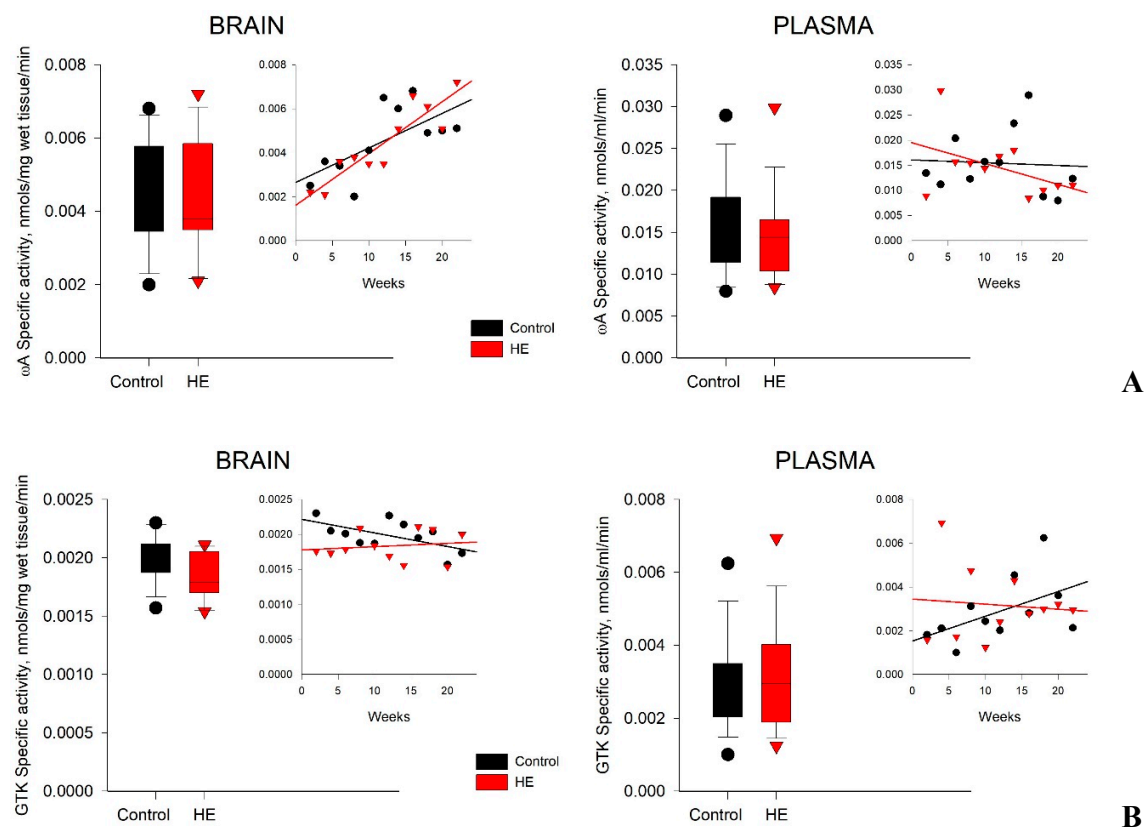


Figure S1. Specific activity of ω A (A) and GTK (B) in brain tissues and blood plasma of control (black circle) and TAA-induced groups of rats (red triangle). The data are presented as average values (for the period of 2-22 weeks).

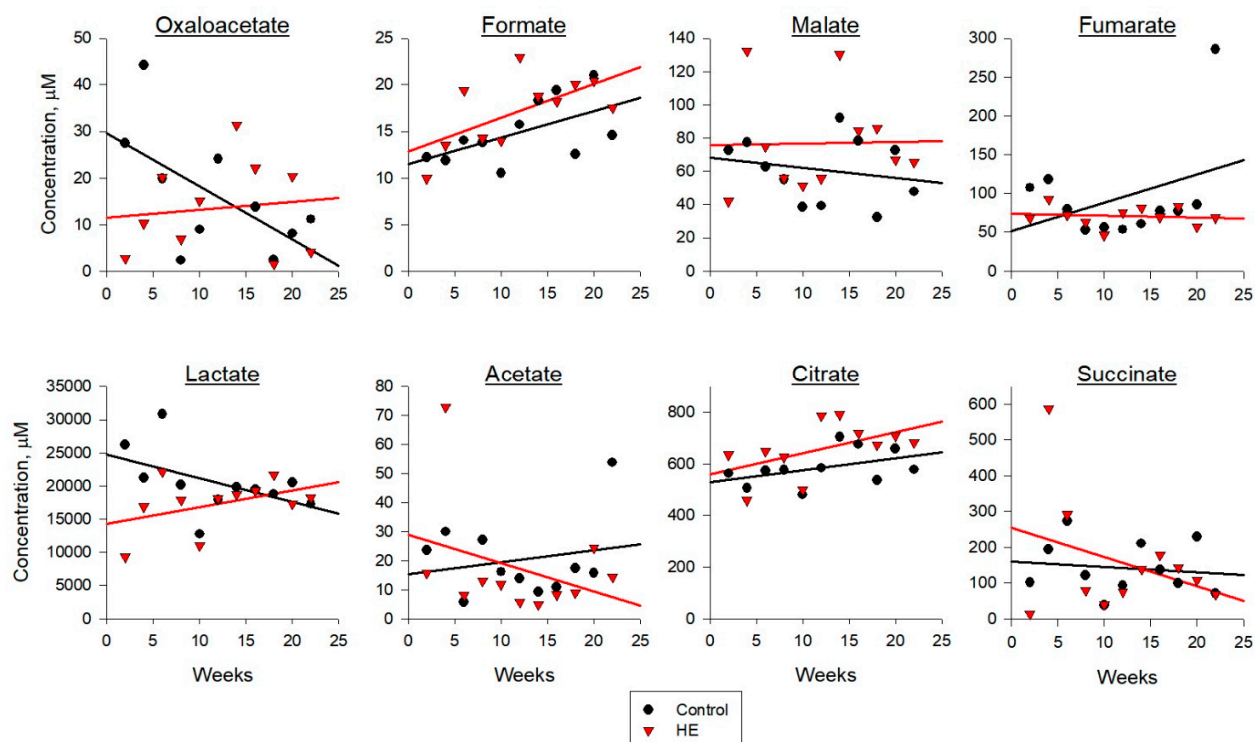


Figure S2. Distribution of the pool of TCA metabolites in the blood plasma of control (black circle) and TAA-induced groups of rats (red triangle). The data are presented as average values (for the period of 2-22 weeks).

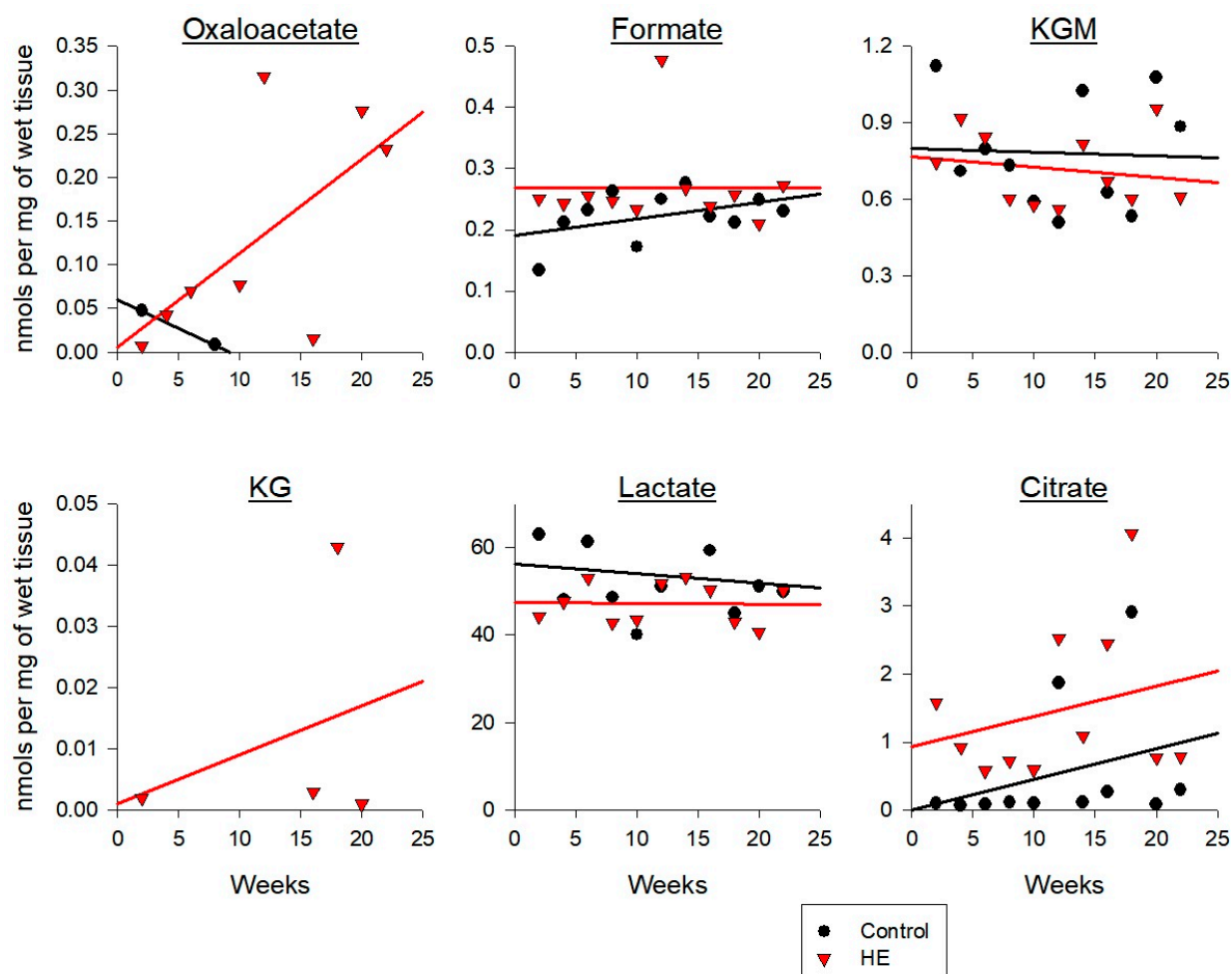


Figure S3. Distribution of the pool of TCA metabolites in the liver of control (black circle) and TAA-induced groups of rats (red triangle). The data are presented as average values (for the period of 2-22 weeks).

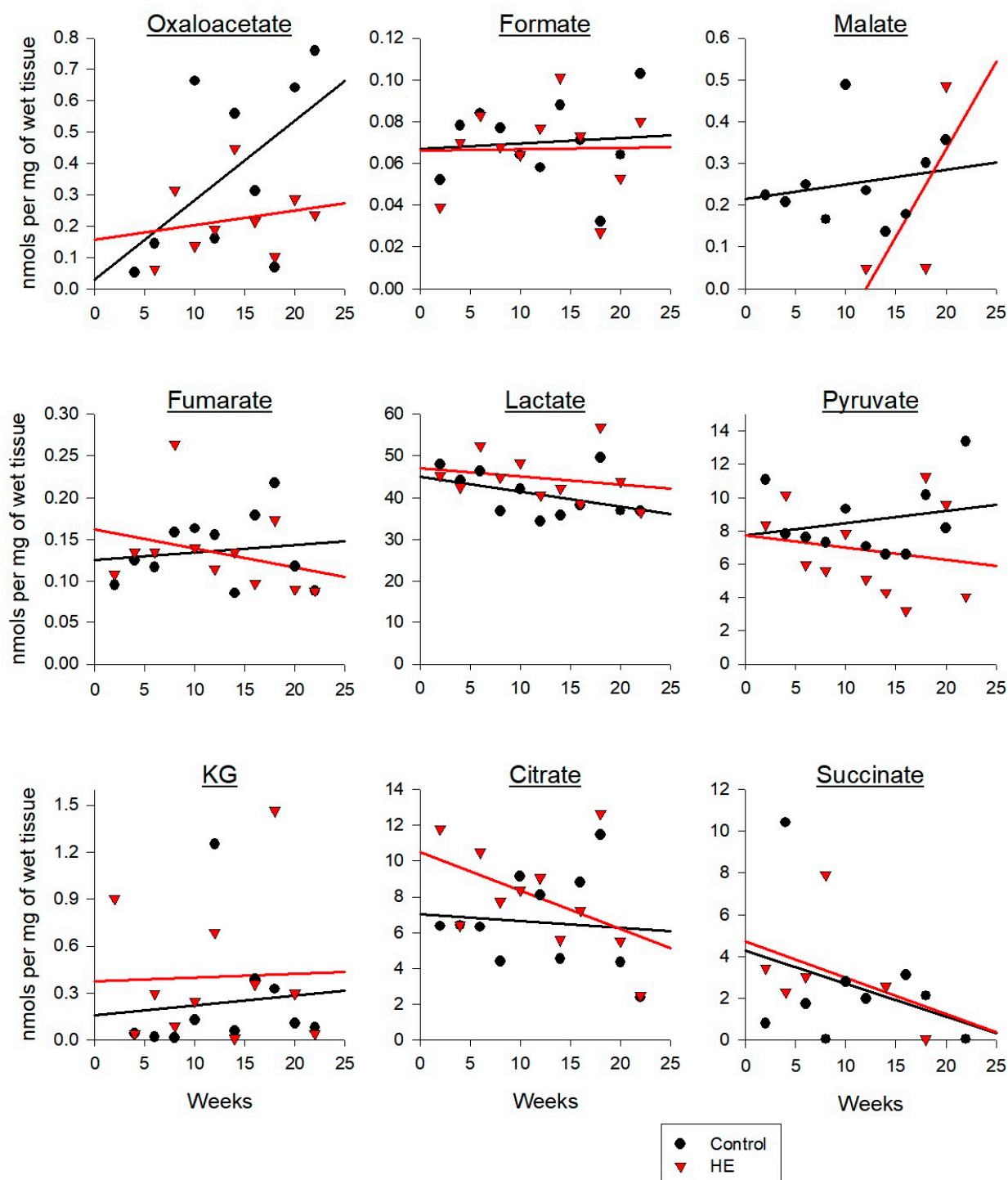


Figure S4. Distribution of the pool of TCA metabolites in the kidneys of control (black circle) and TAA-induced groups of rats (red triangle). The data are presented as average values (for the period of 2-22 weeks).

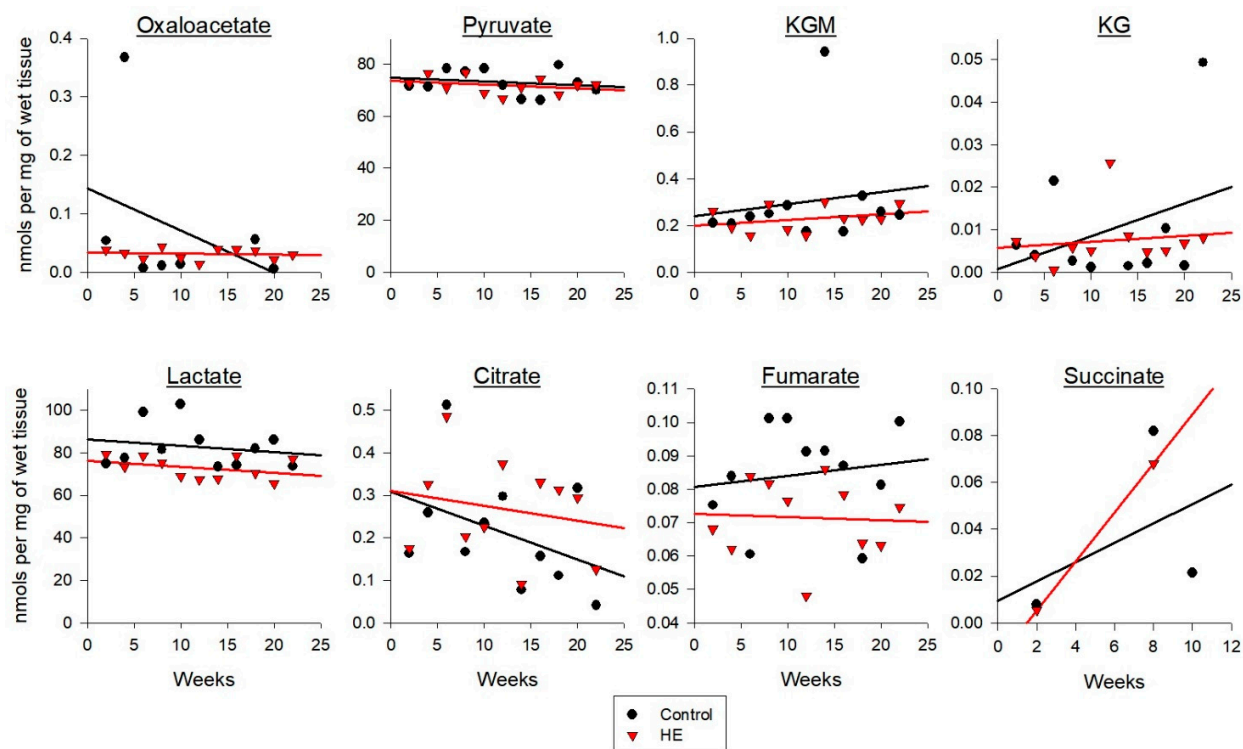


Figure S5. Distribution of the pool of TCA metabolites in the brain of control (black circle) and TAA-induced groups of rats (red triangle). The data are presented as average values (for the period of 2-22 weeks).