

# Near-infrared fluorescence imaging of pancreatic cancer using a fluorescently labelled anti-CEA nanobody probe: a preclinical study.

Van Manen et al.

## Supplementary data

Figure S1

Overview on flowcytometry results.

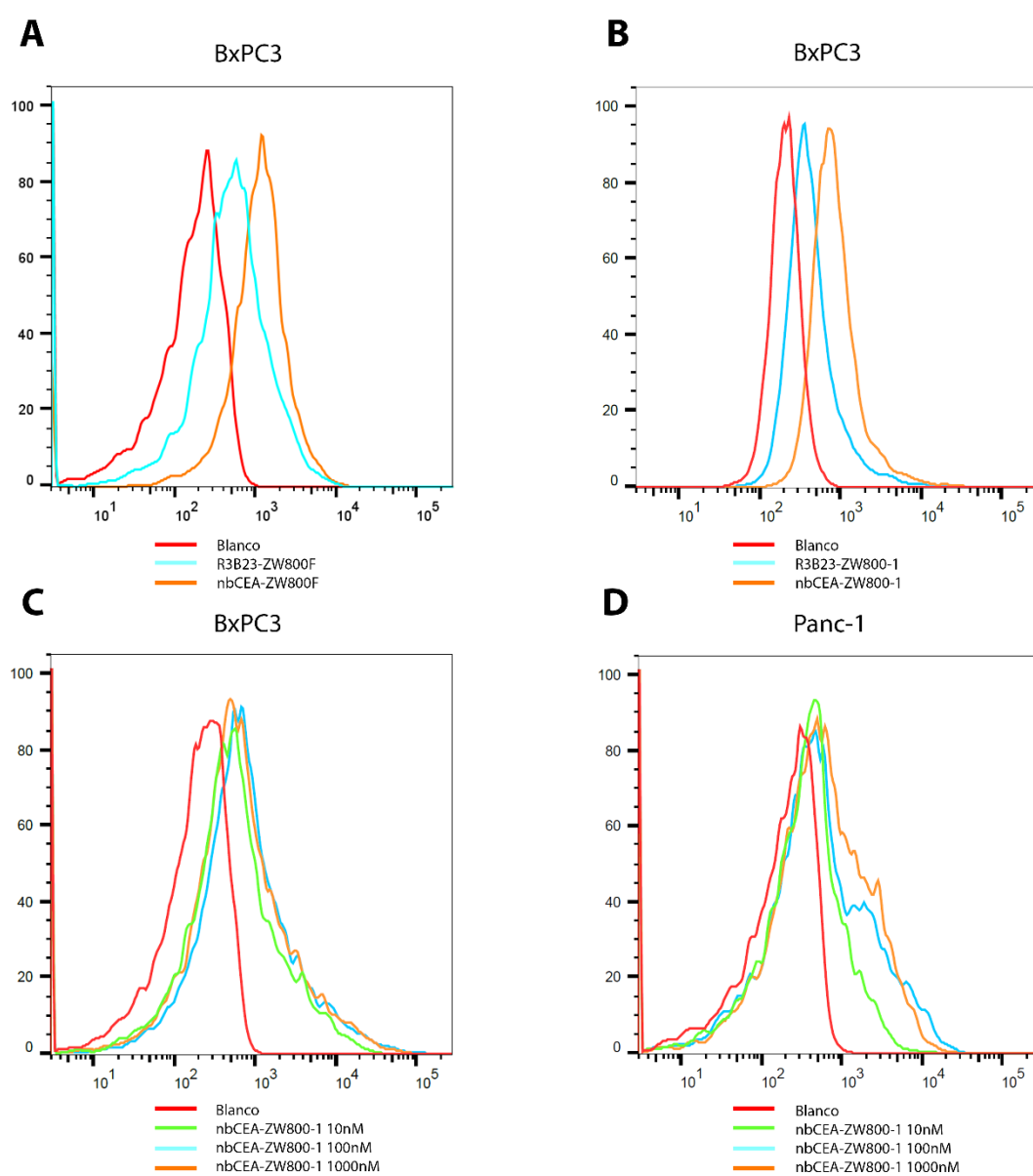


Figure S2

Biodistribution data of NbCEA5-ZW800-1 in the pancreatic orthotopic models (N=2). Scale bar is 10 mm. Abbreviations: *Lu*=lungs; *Ht*=heart; *Li*=liver; *Tu*=tumor; *Pa*=pancreas; *Sp*=spleen; *Int*=small intestines; *St*=stomach; *Ki*=kidneys; *Co*=colon; *Sk*=skin; *Mu*=muscle.

