



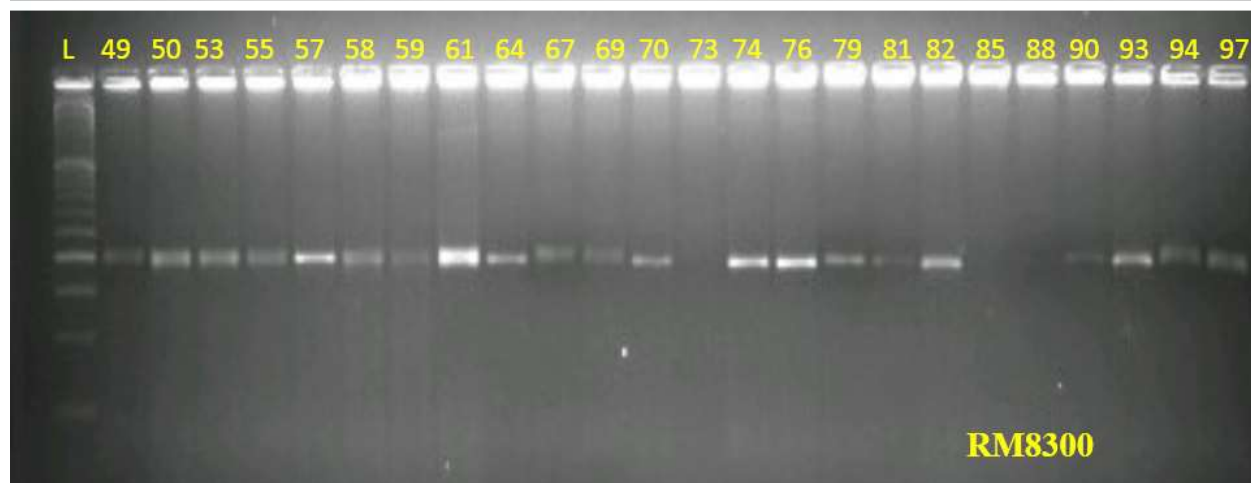
Supplementary figure S1. Hybridization and generation of cross seeds of recipient and donor parents for transfer of submergence tolerance and bacterial blight resistance in variety, Ranidhan..



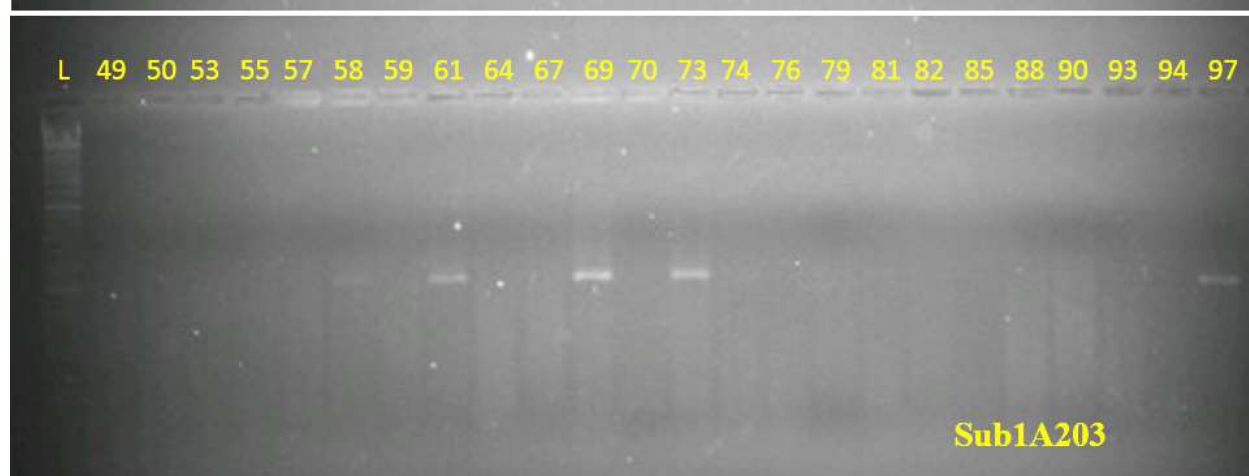
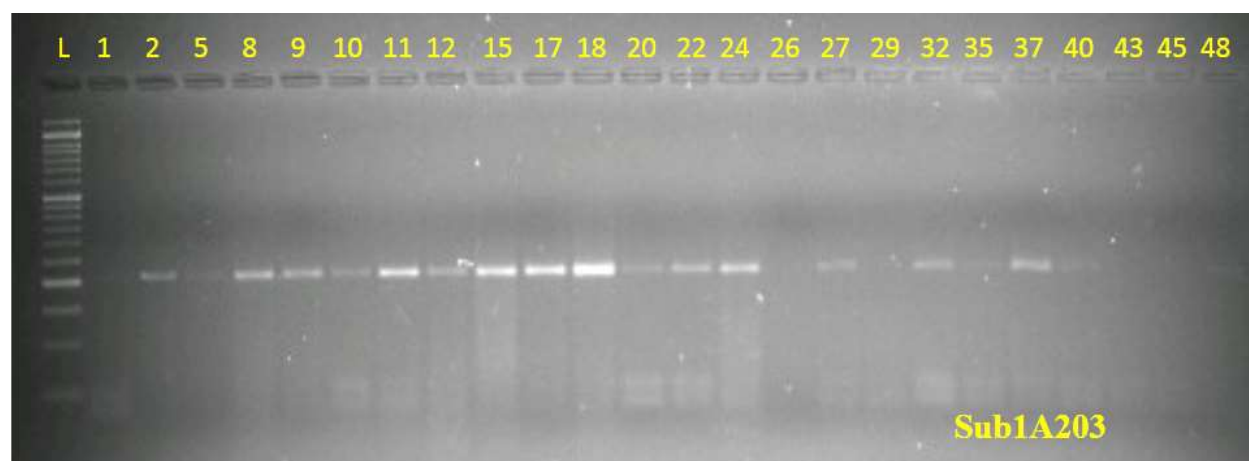
Supplementary figure S2. Clip inoculation of bacterial blight strains into the pyramided and parental lines.

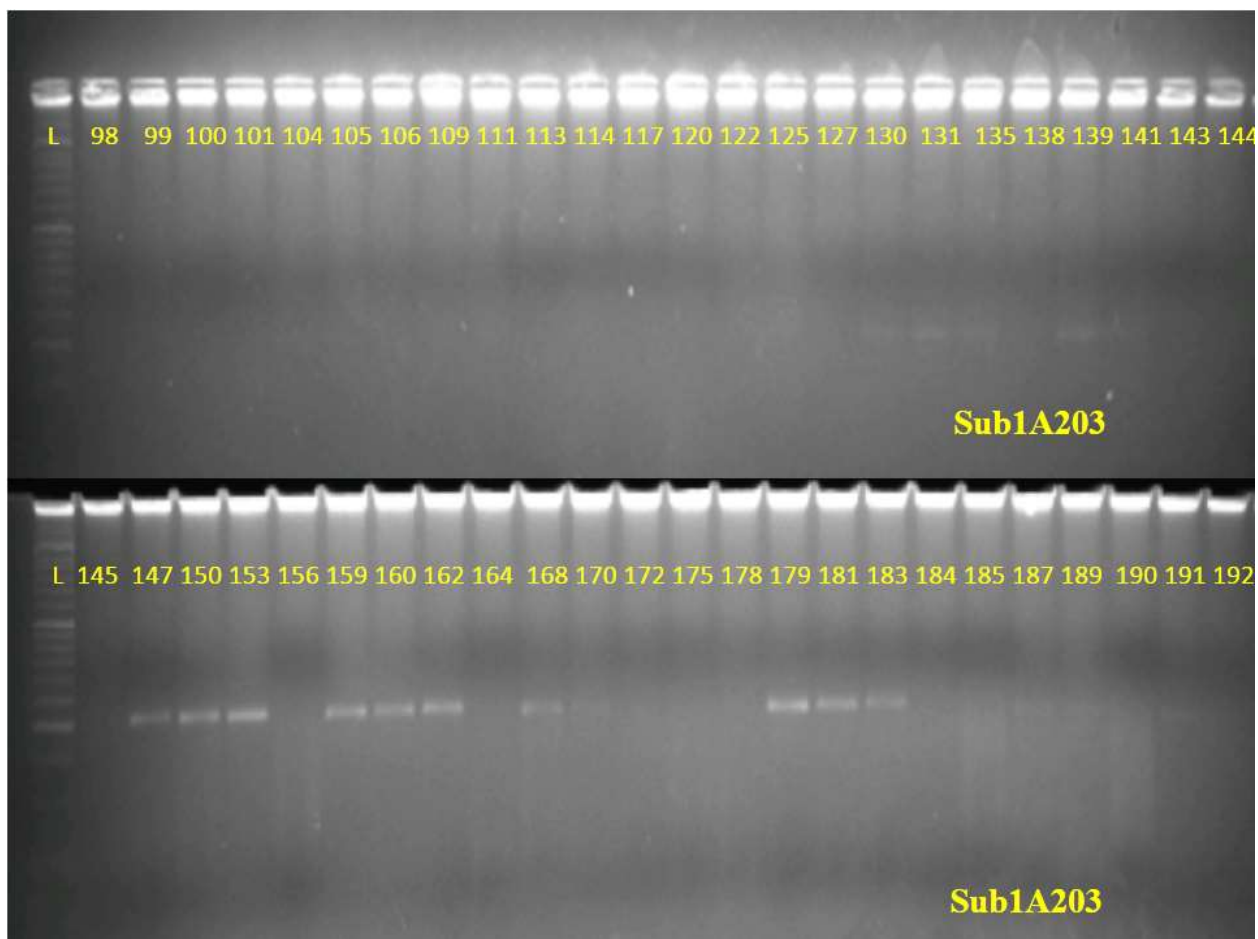


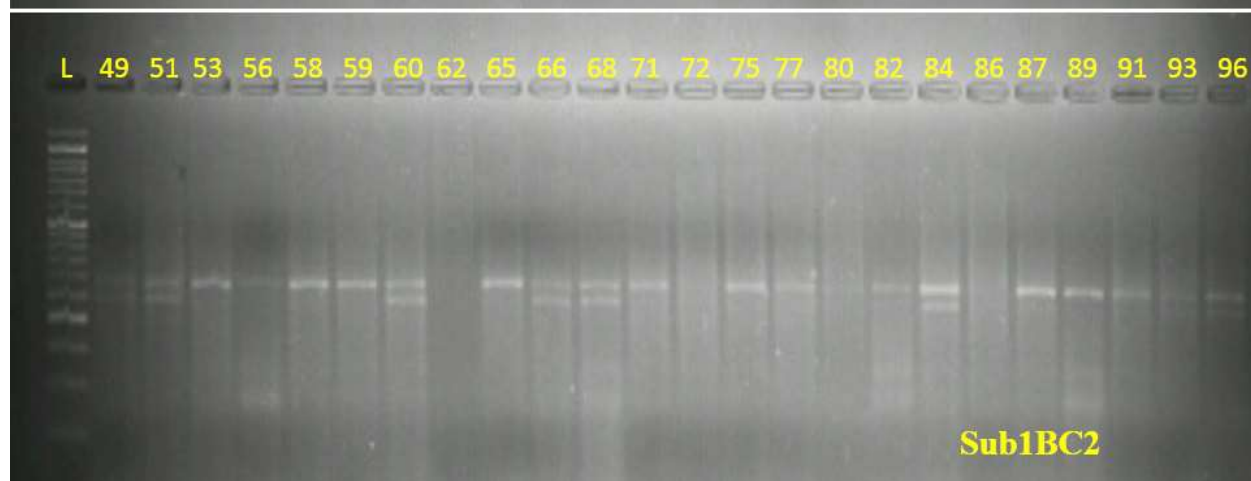
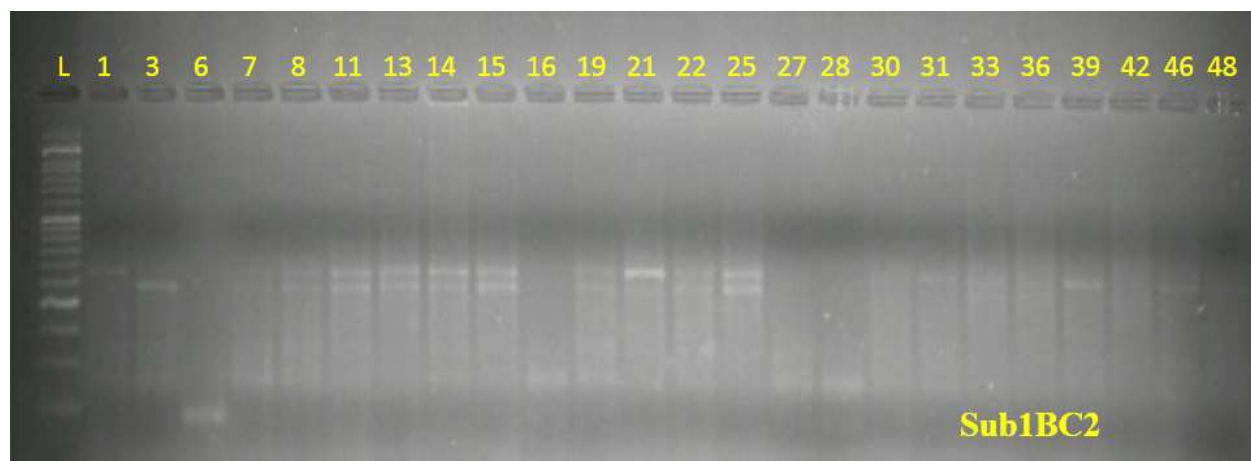
Supplementary figure S3. Screening for the submergence tolerance of the pyramided and parental lines in the screening tank.

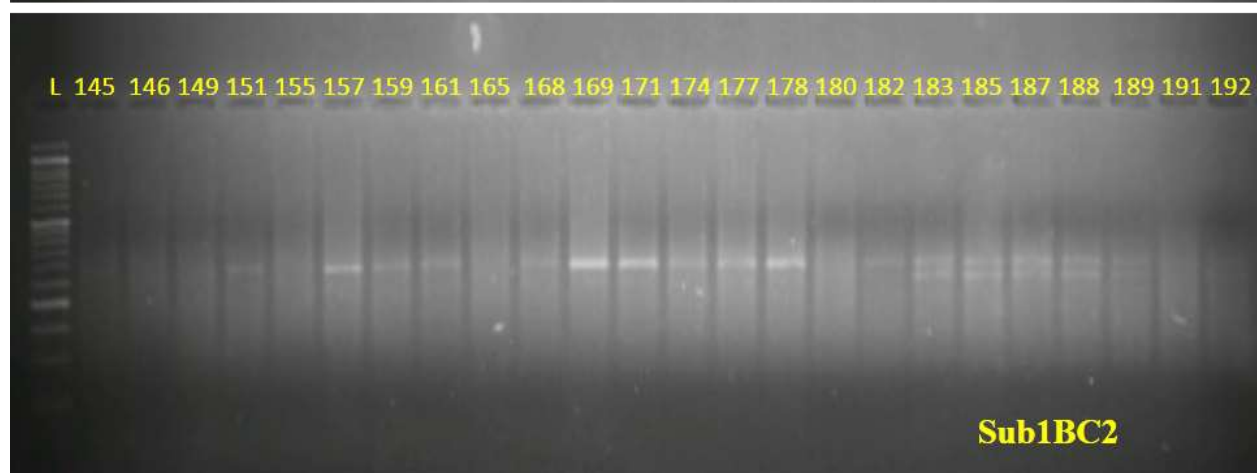
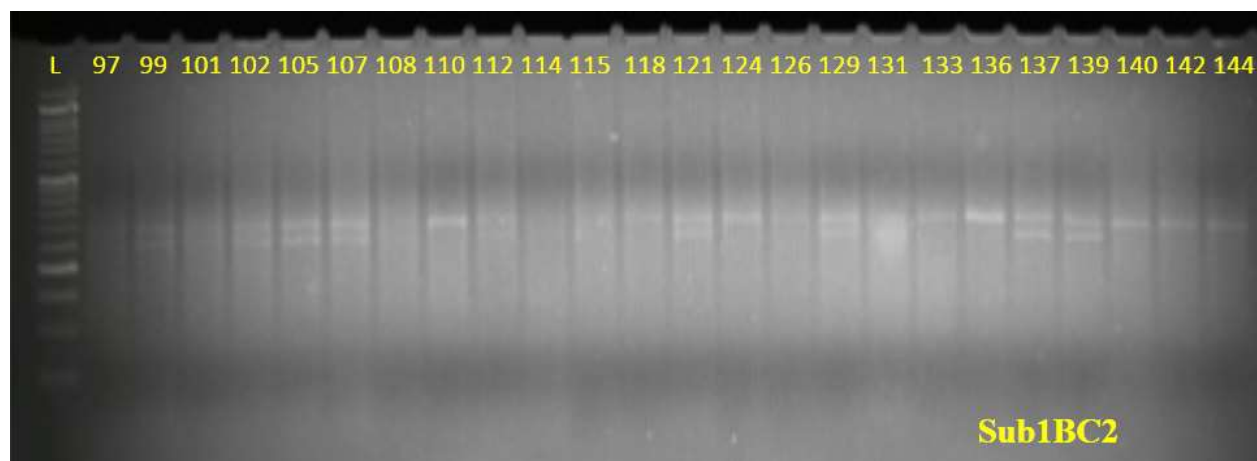




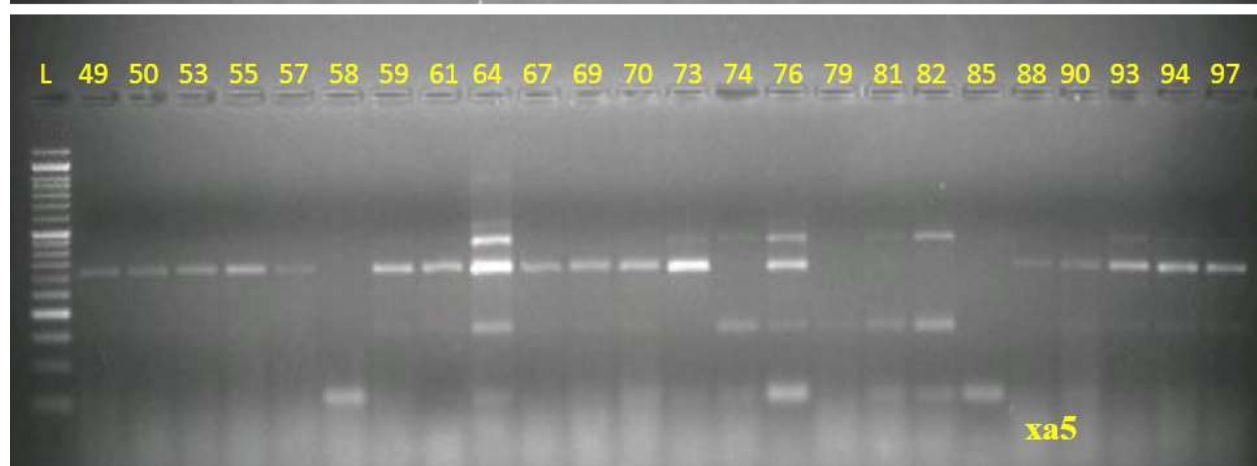




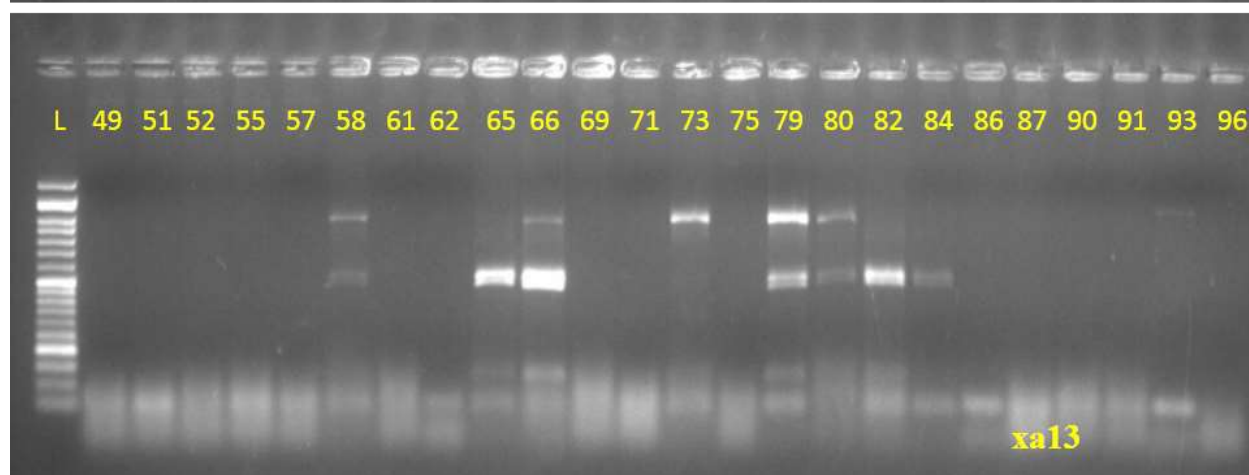
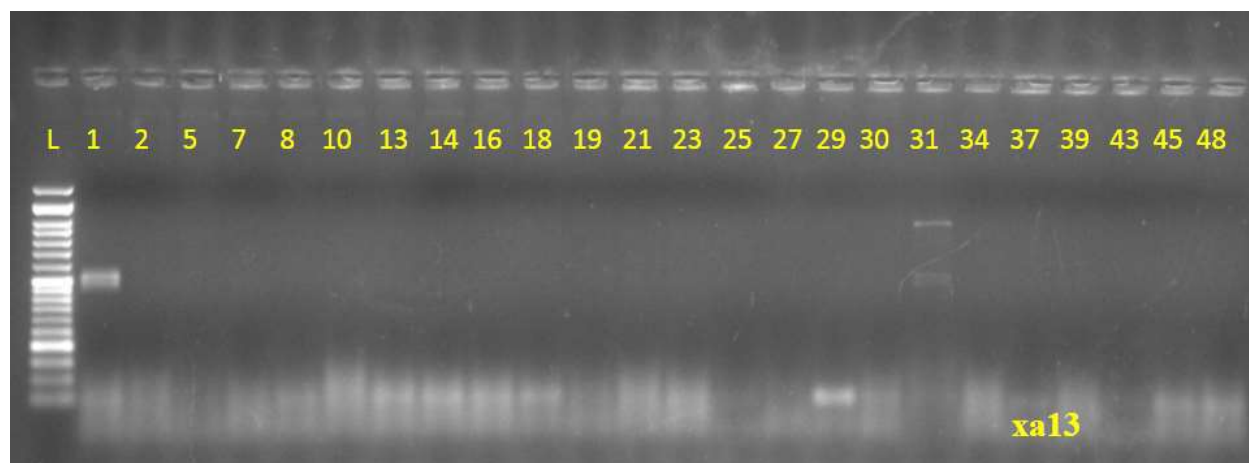


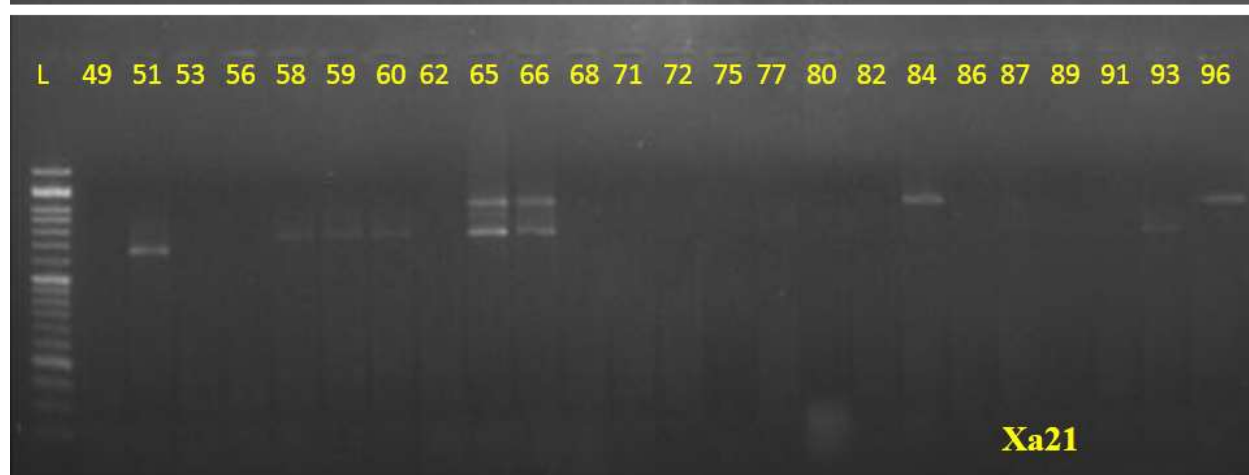
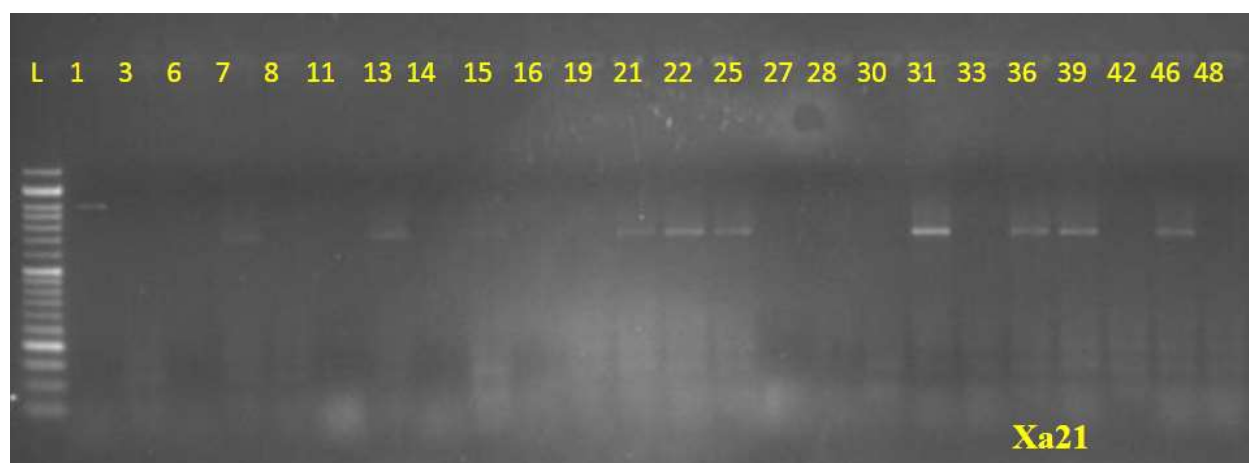








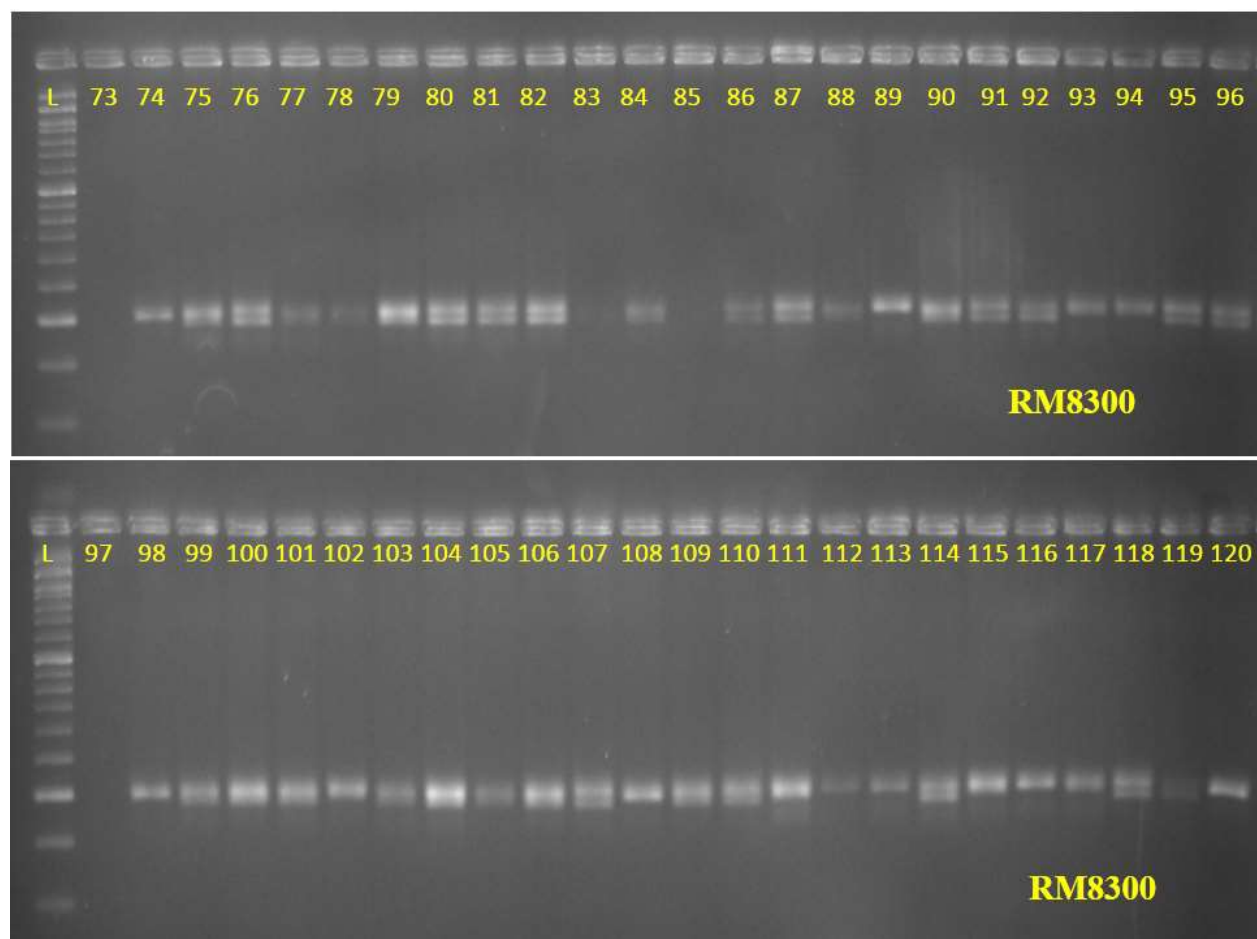




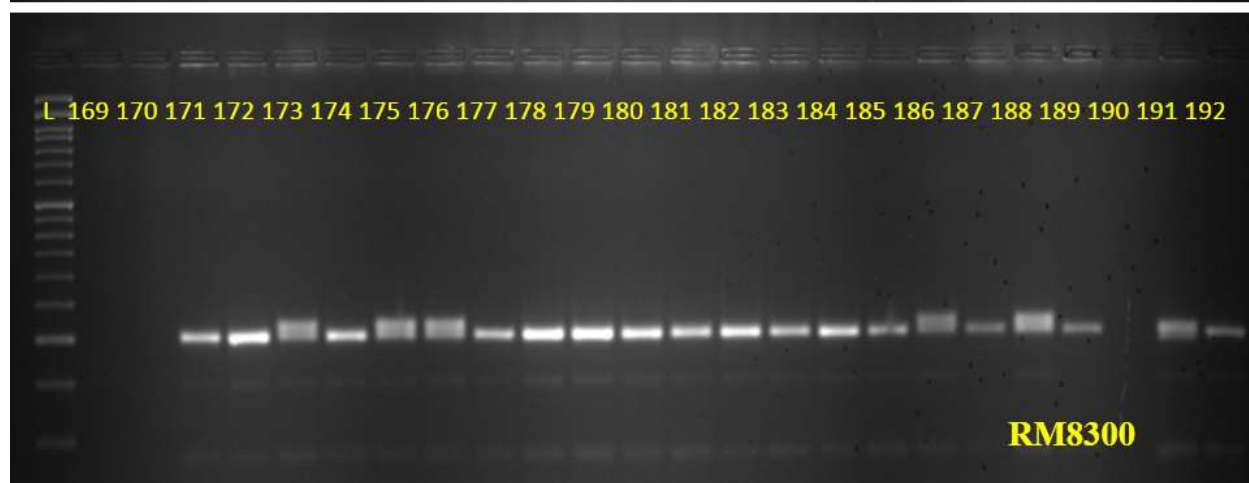


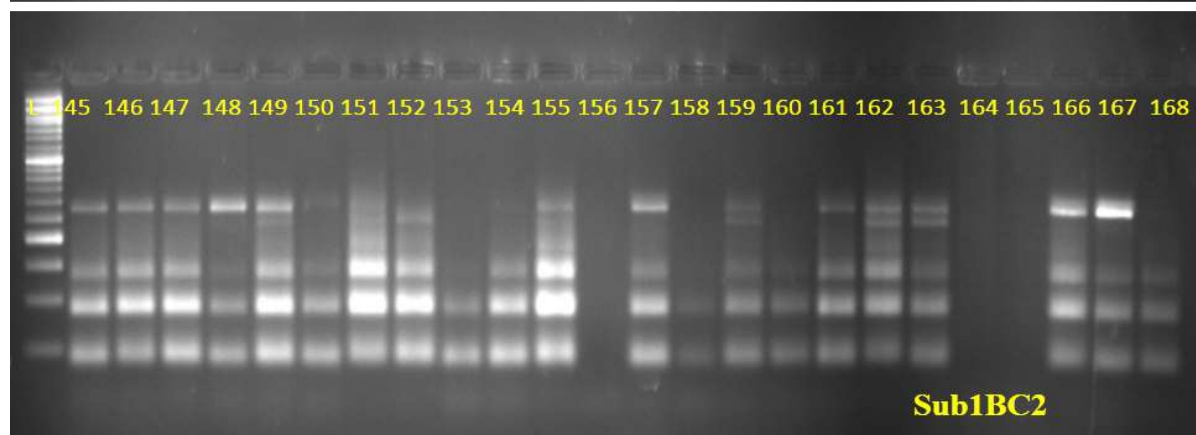
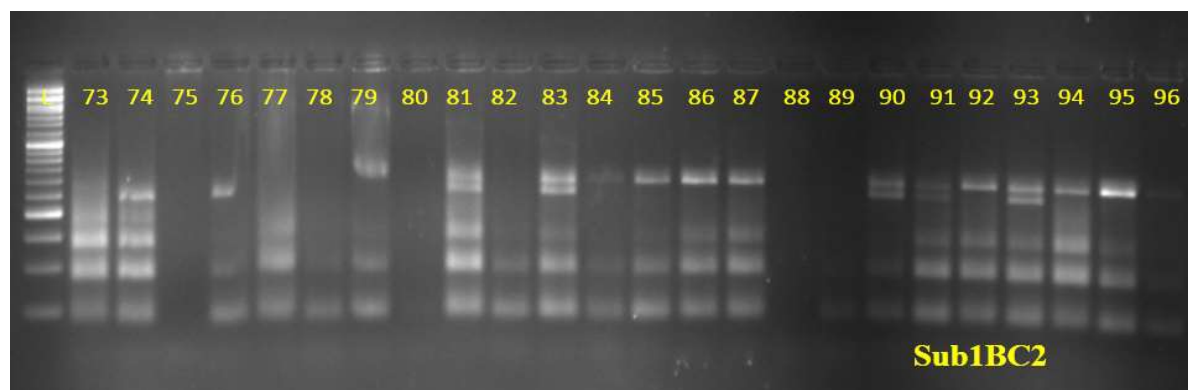
Supplementary figure S4. Molecular screening of BC1F1 progenies for submergence tolerance and bacterial blight resistance in rice variety, Ranidhan background

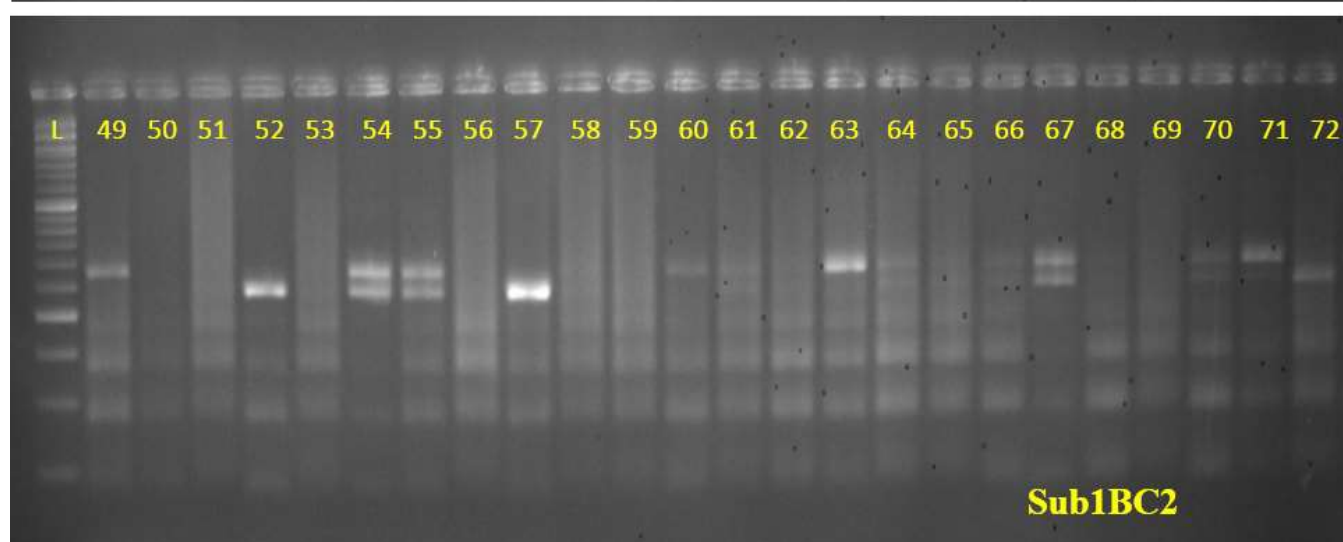
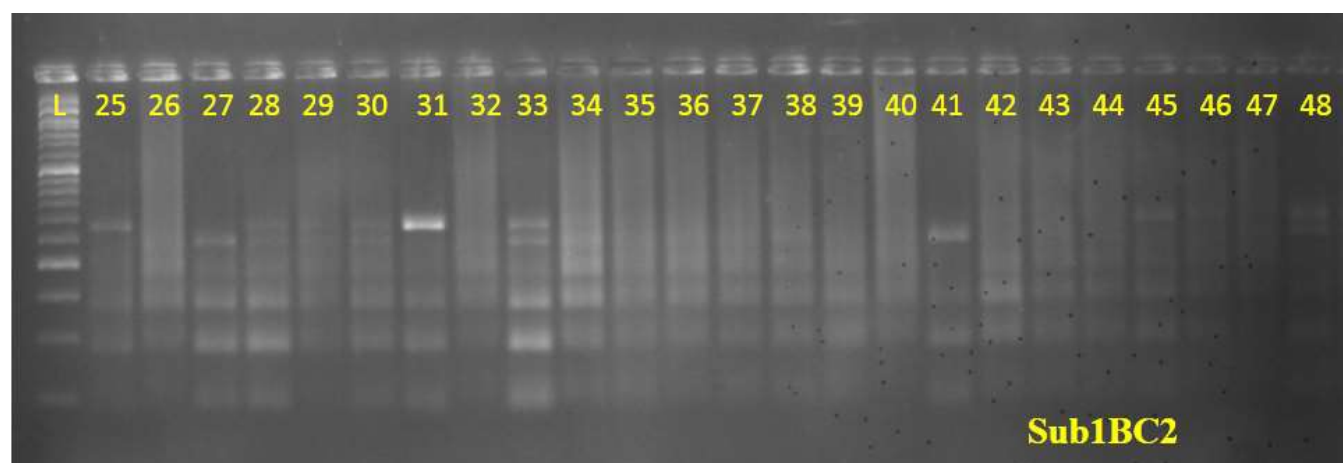


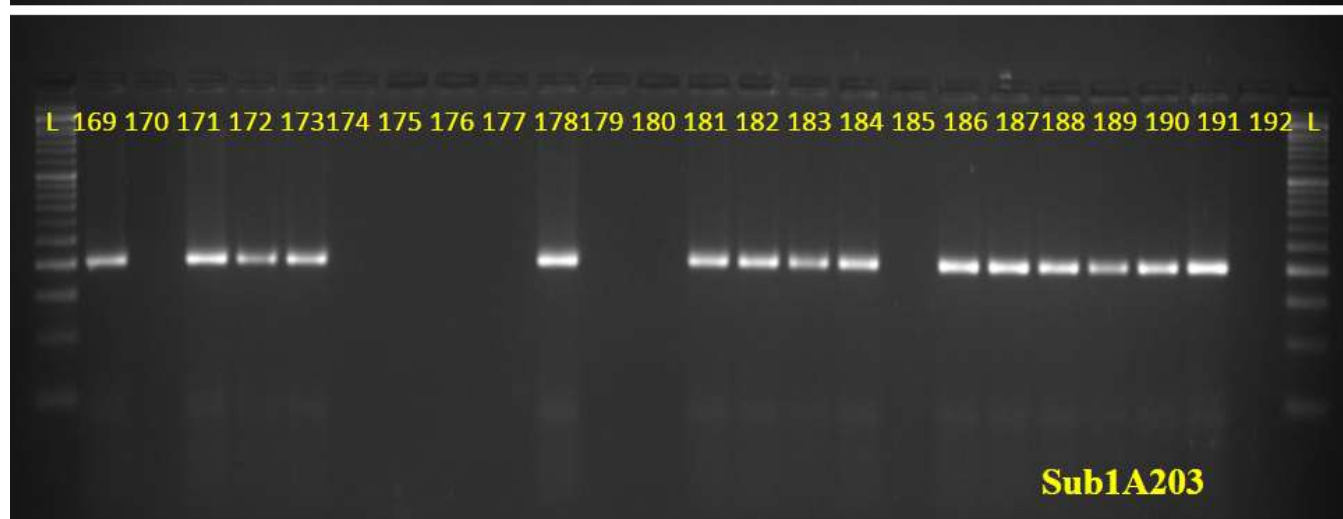
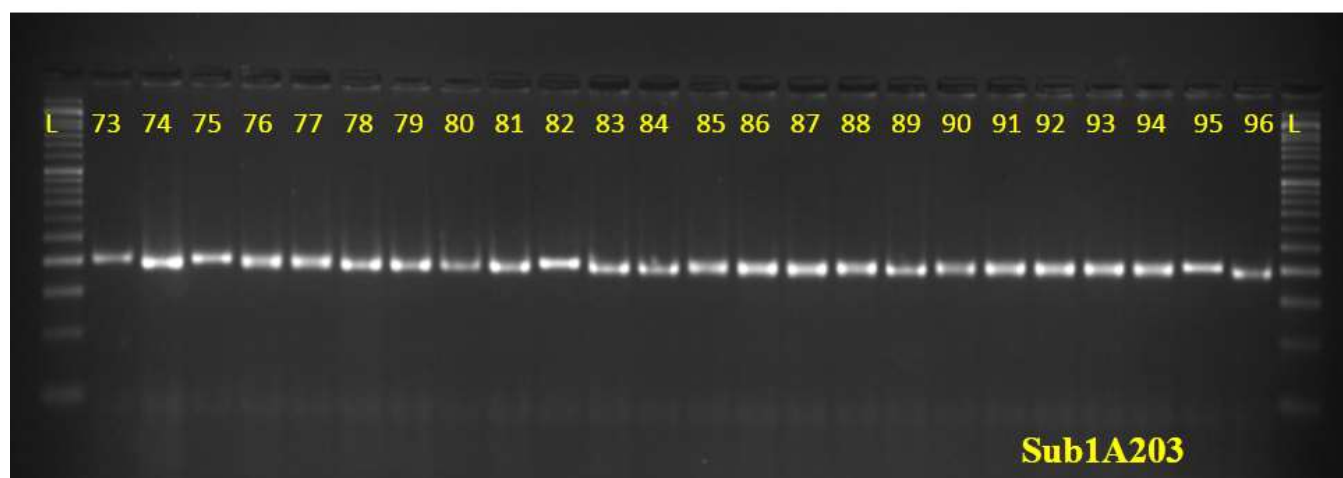


Supplementary figure S5. Molecular screening of BC2F1 progenies in rice variety, Ranidhan background for submergence tolerance and bacterial blight resistance

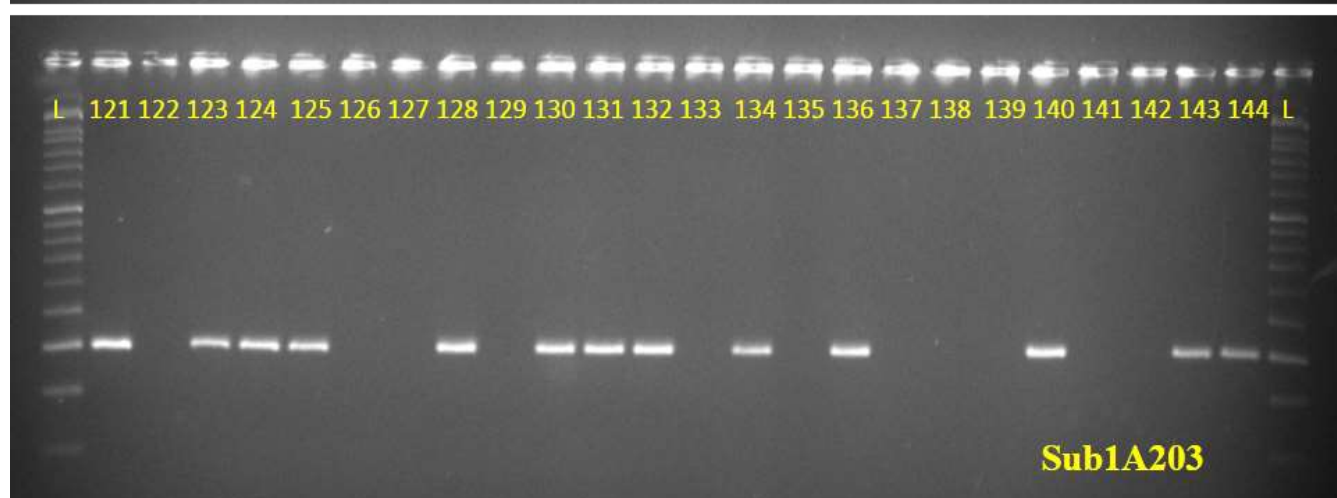
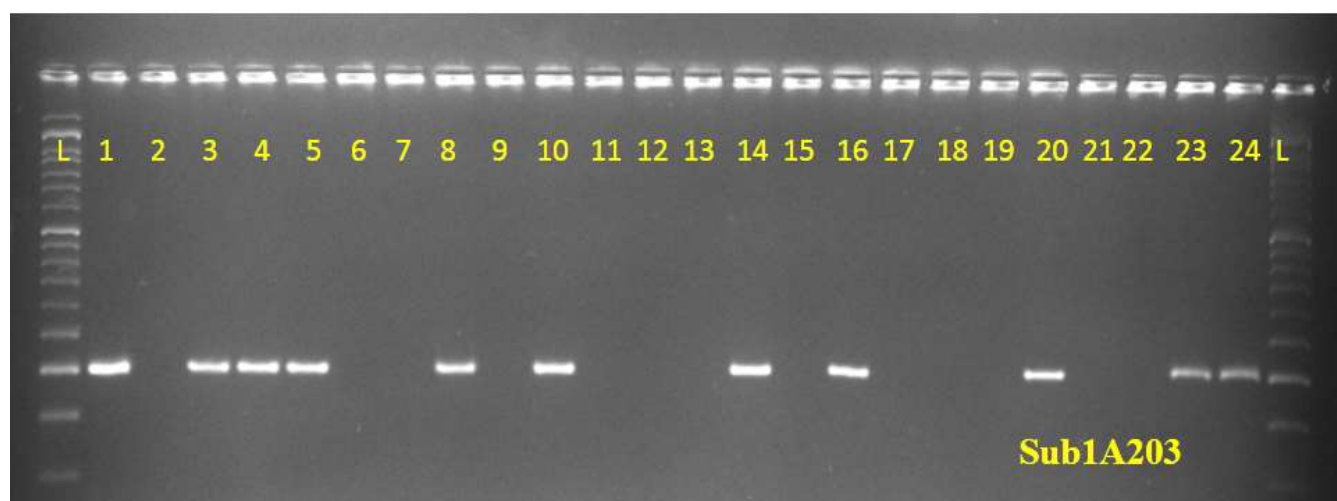


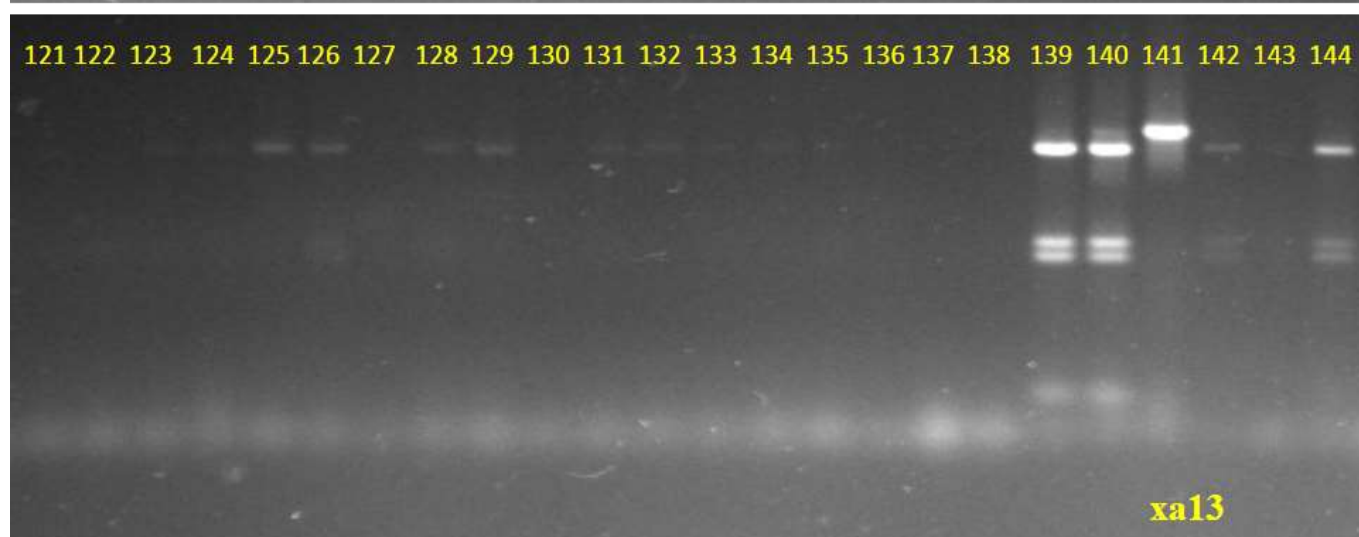
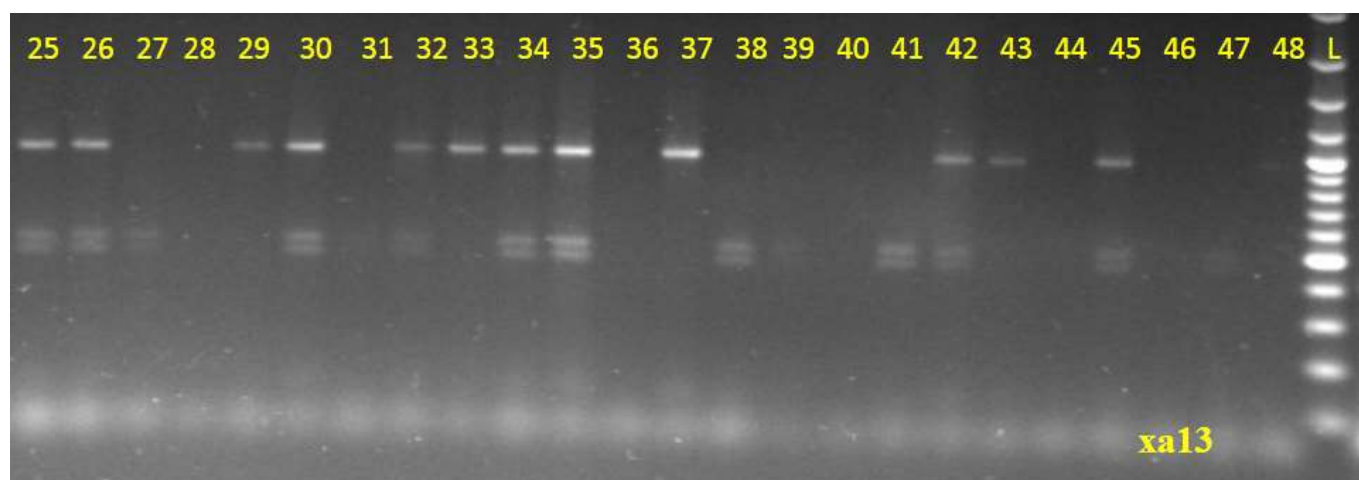


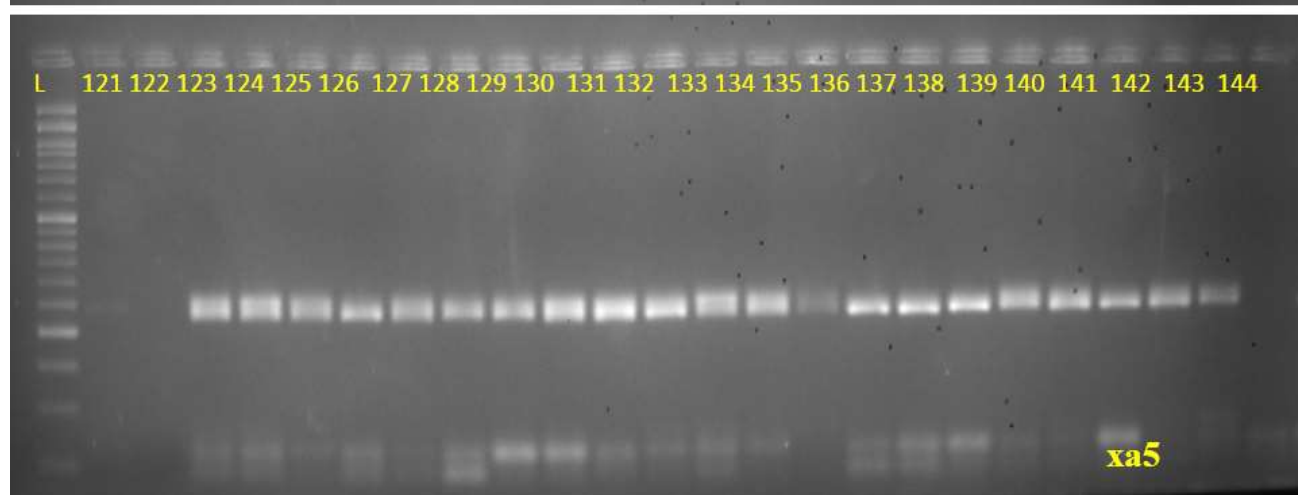
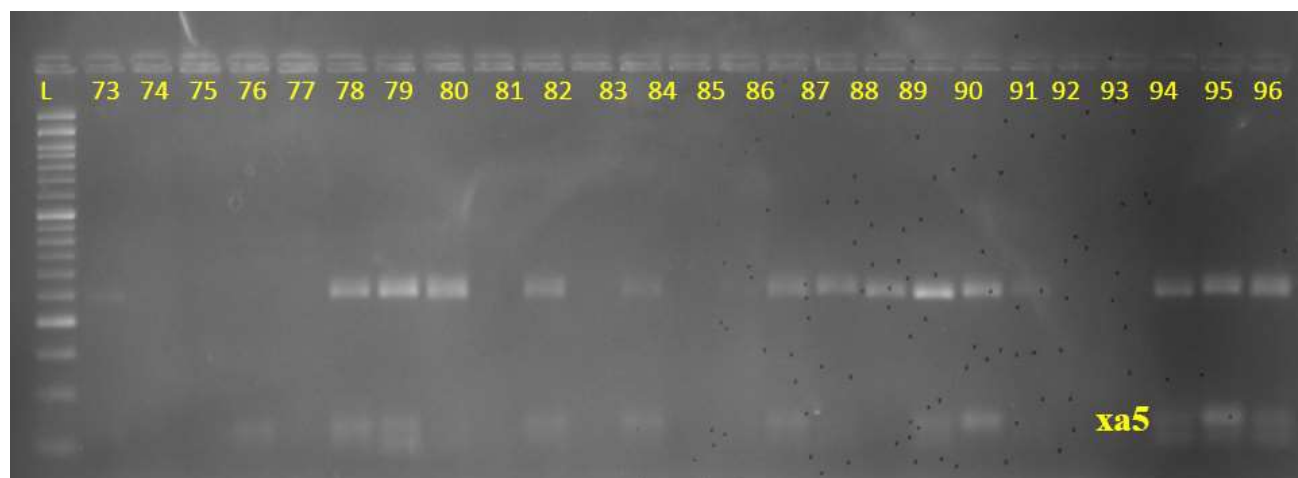


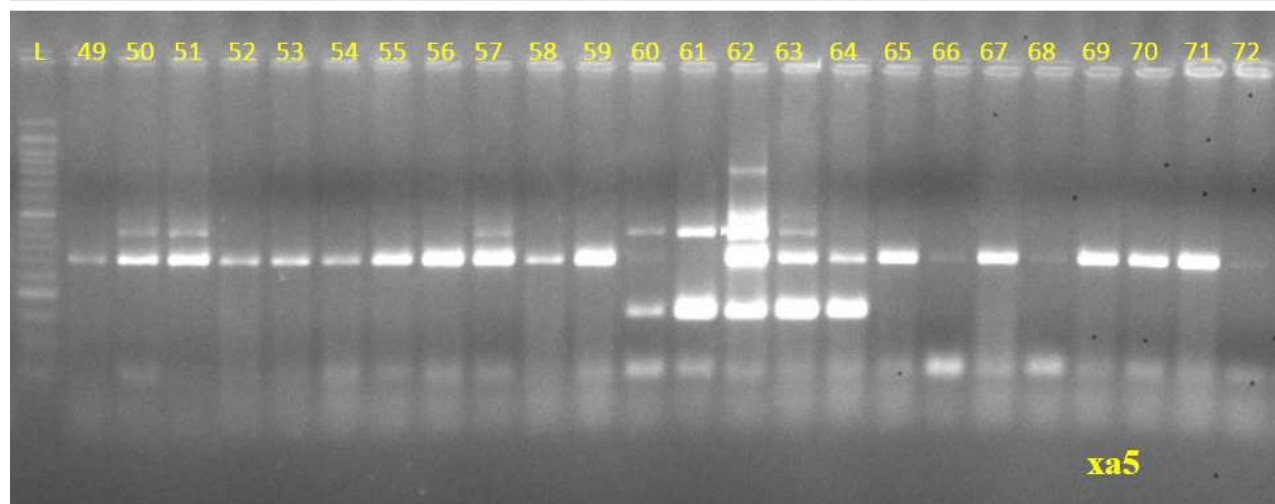
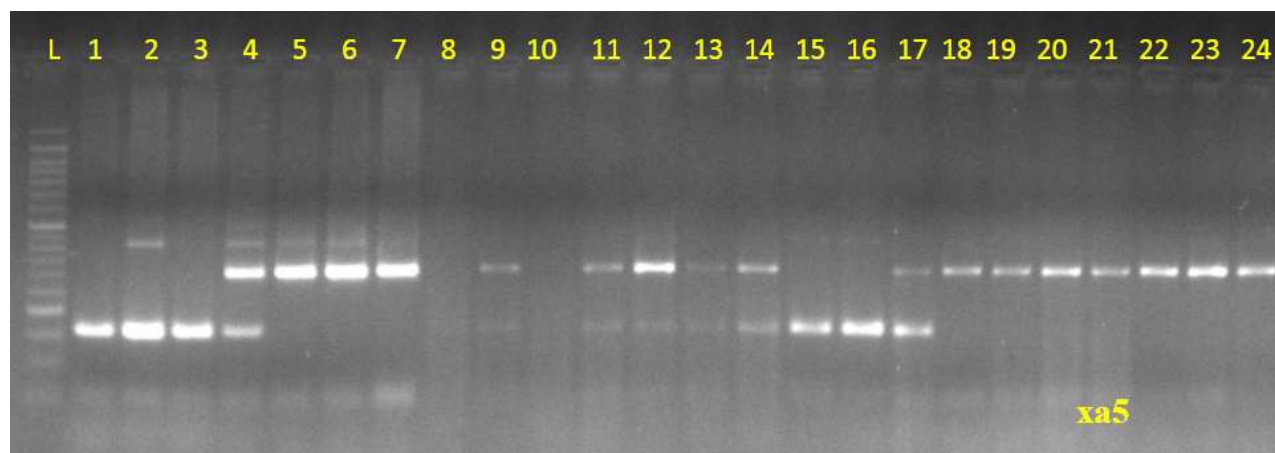


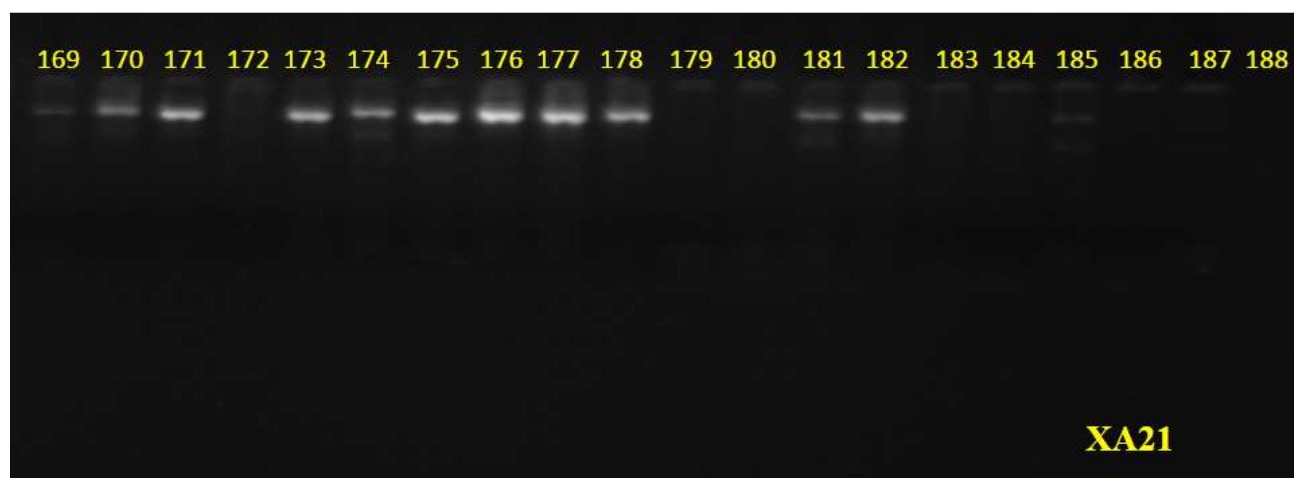
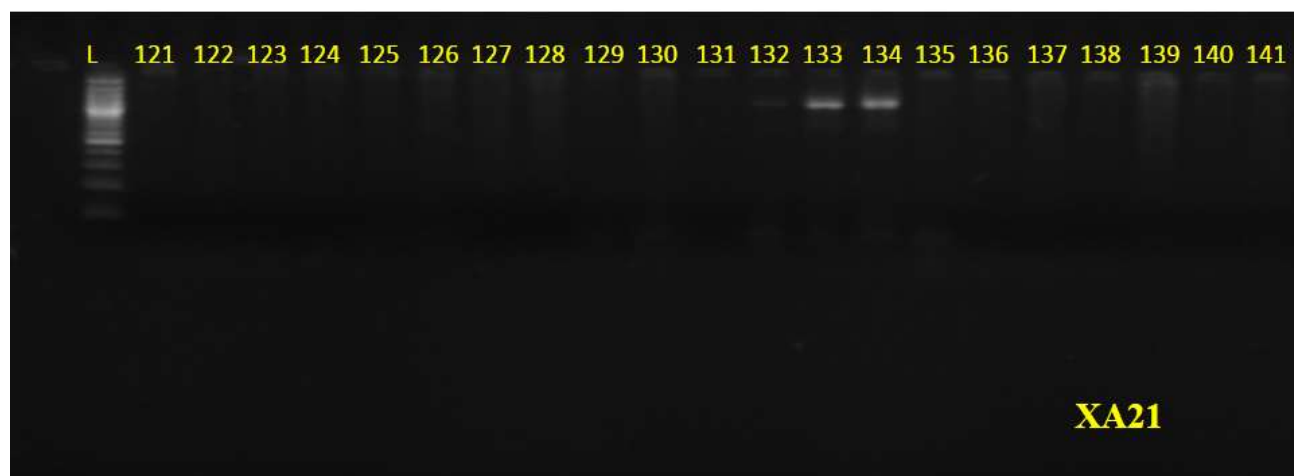




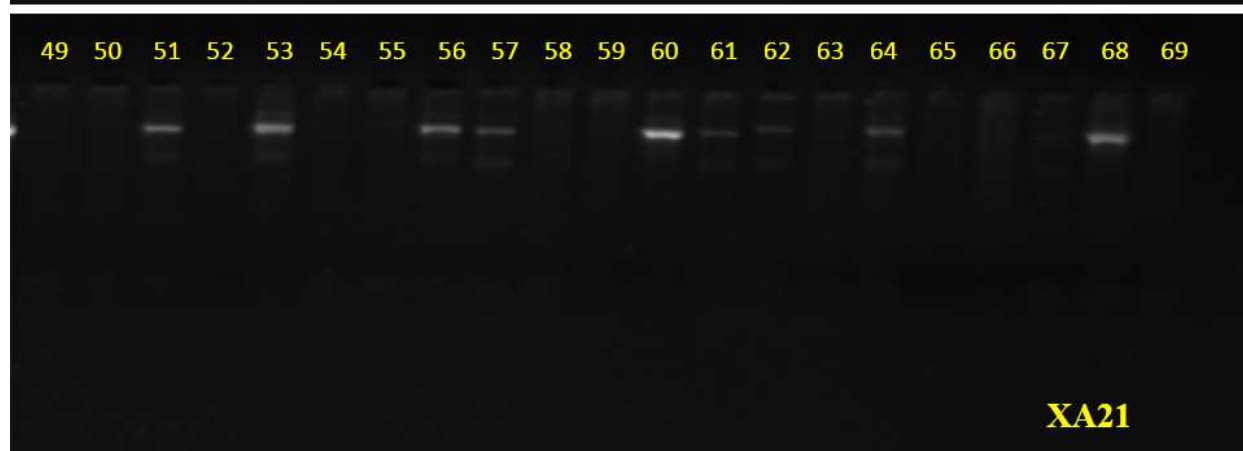
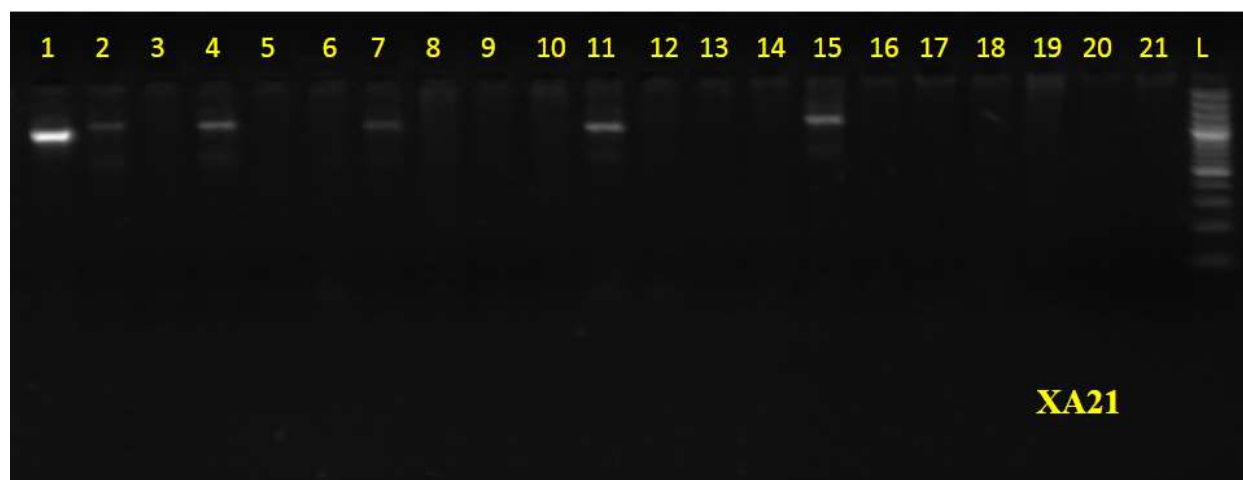


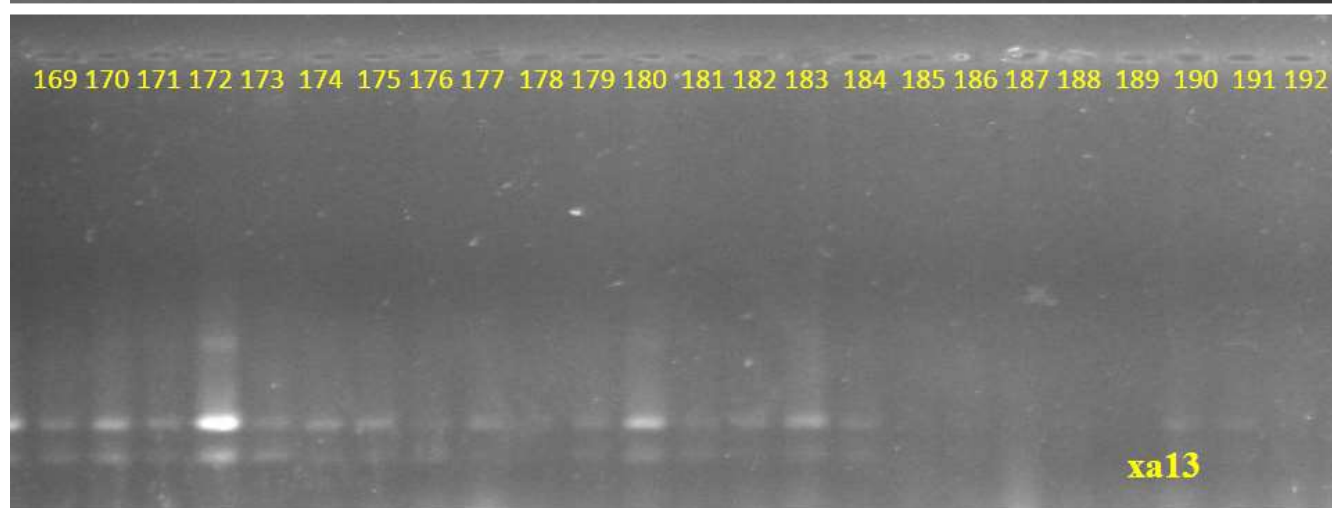
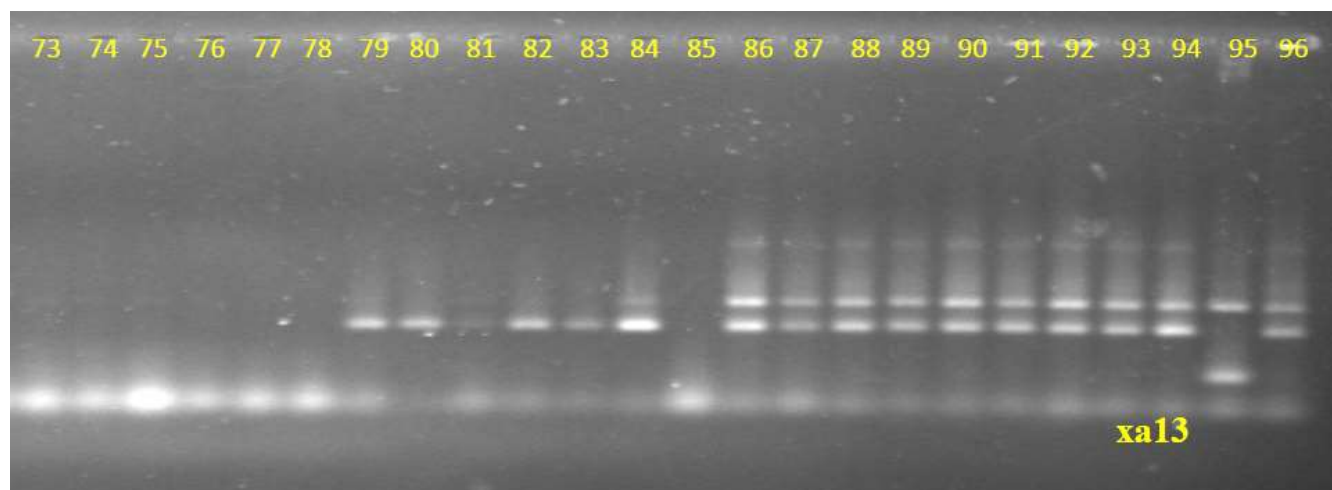


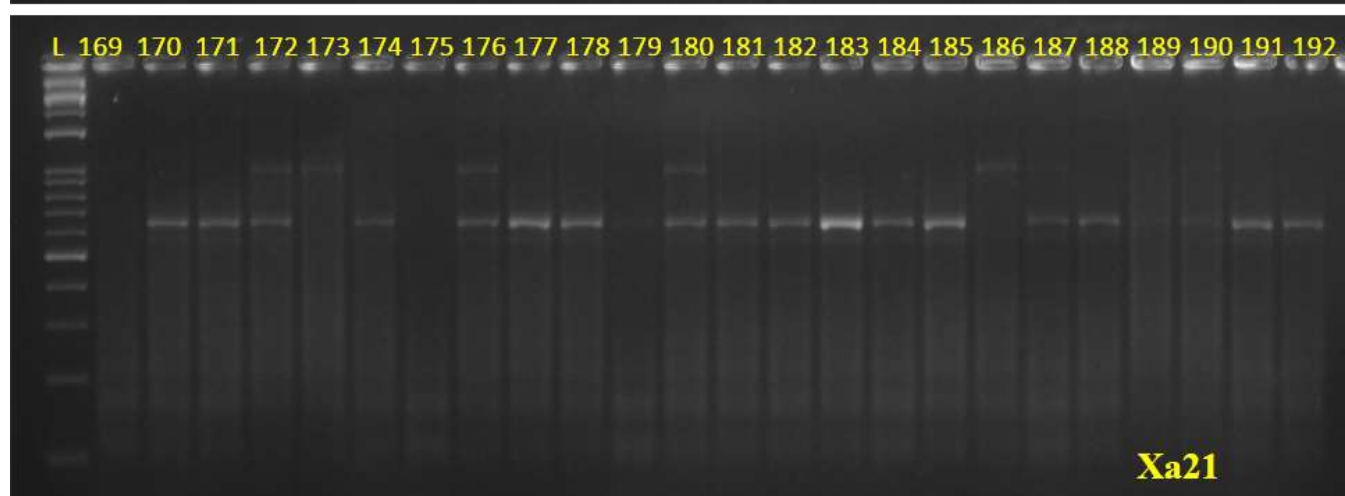
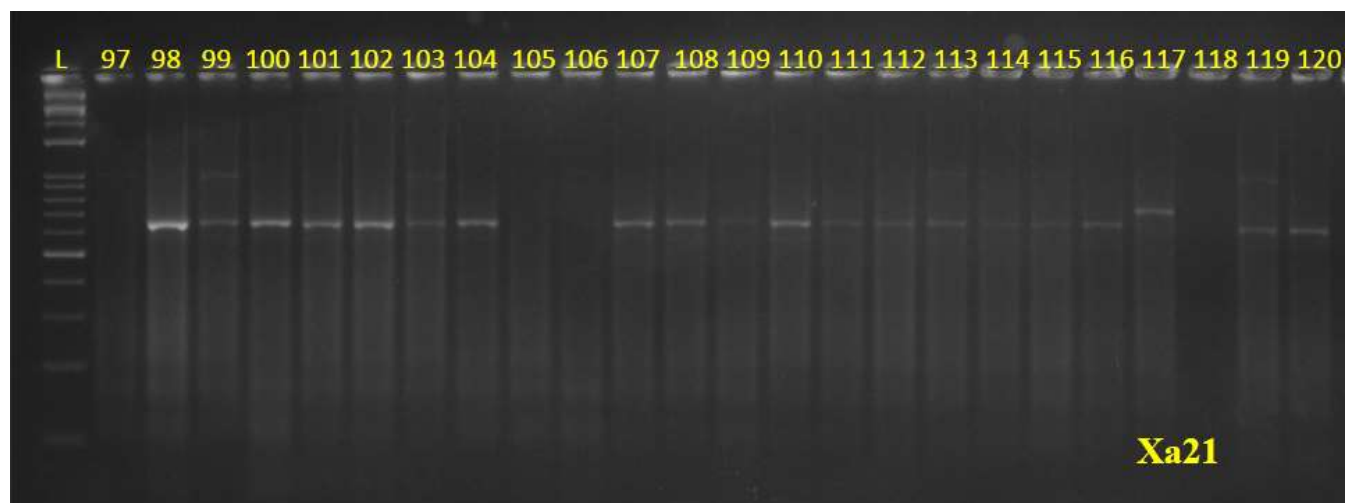


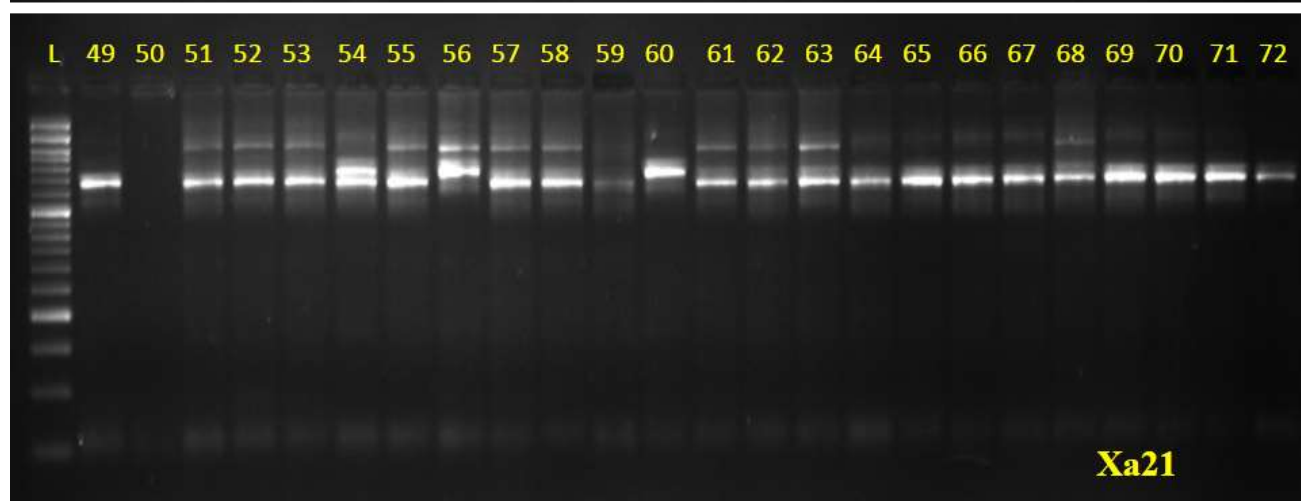
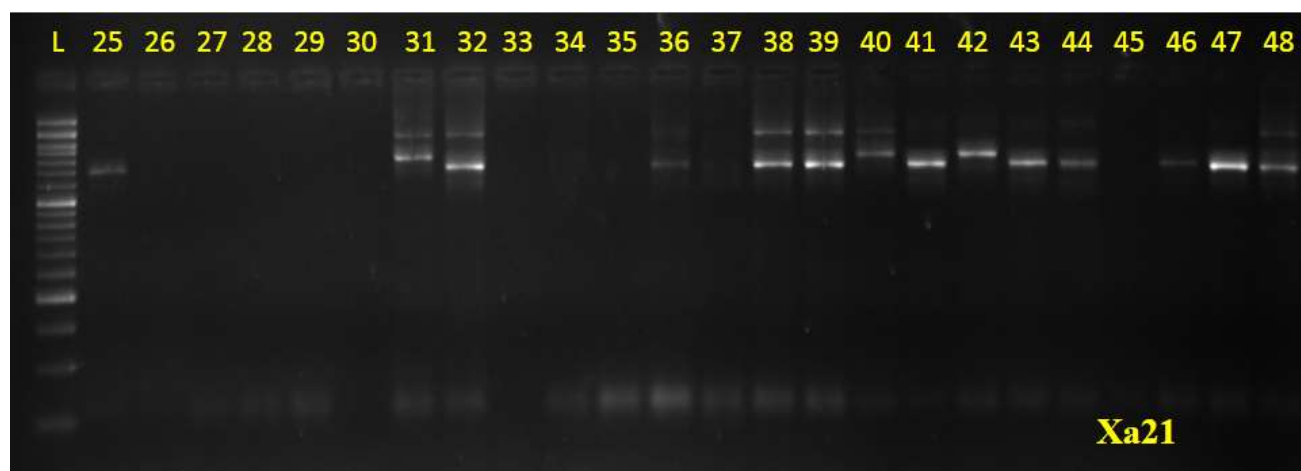


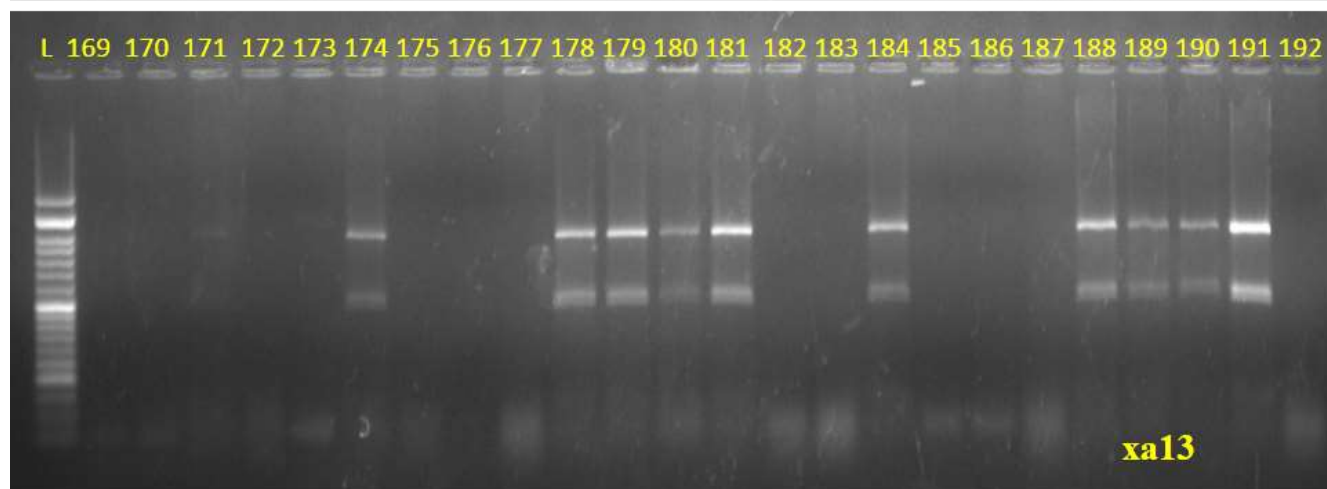
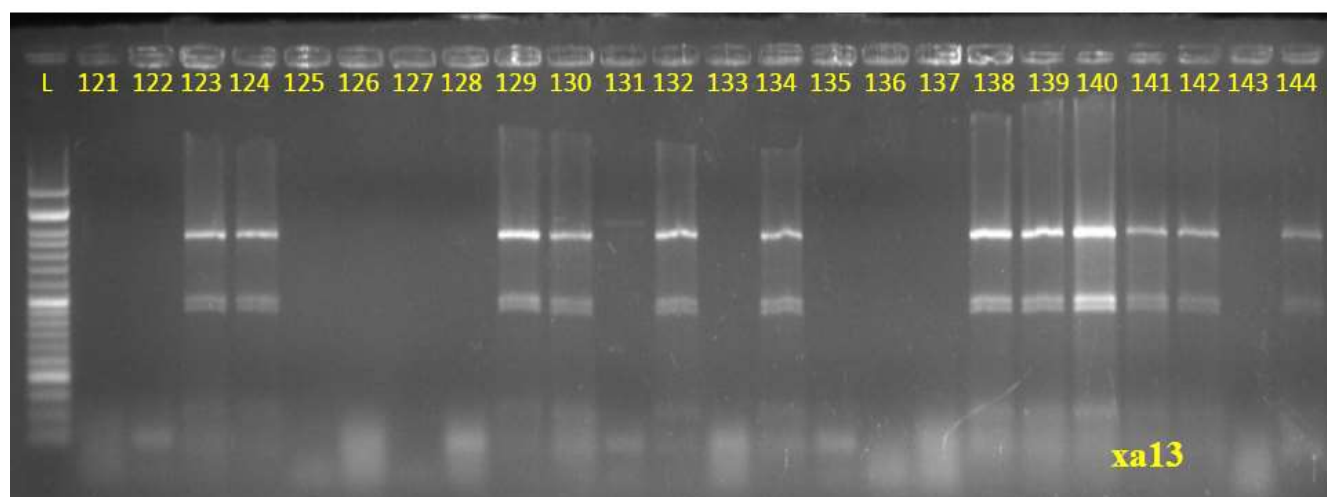




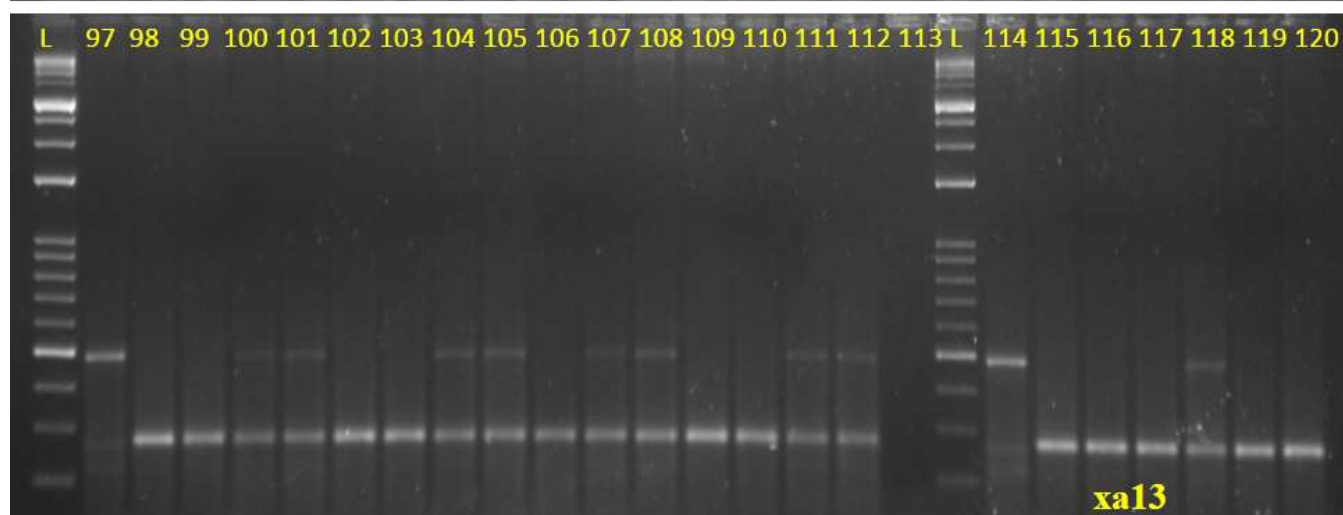
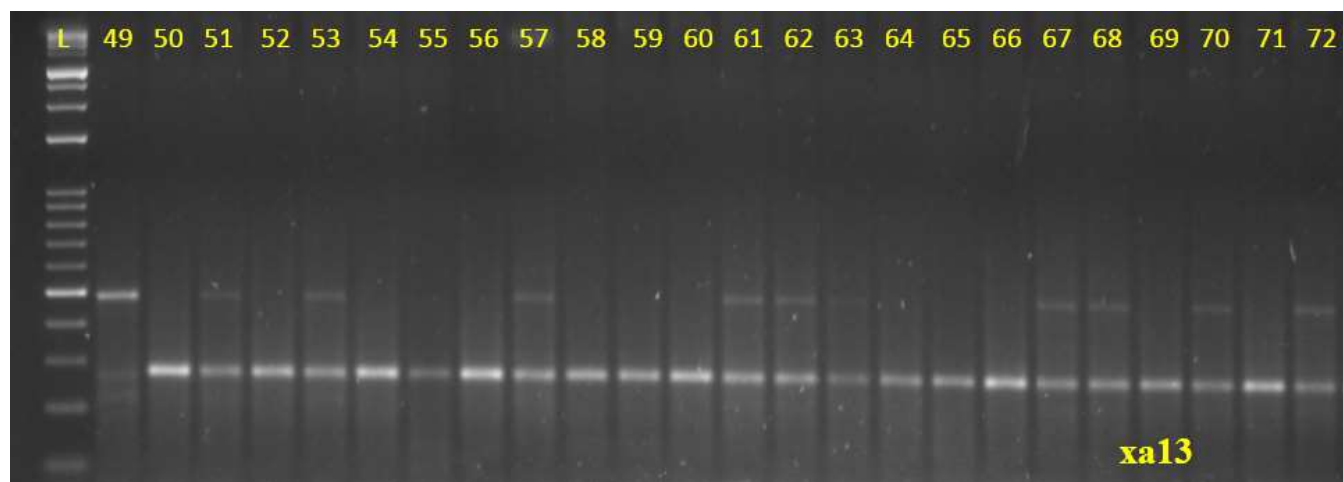


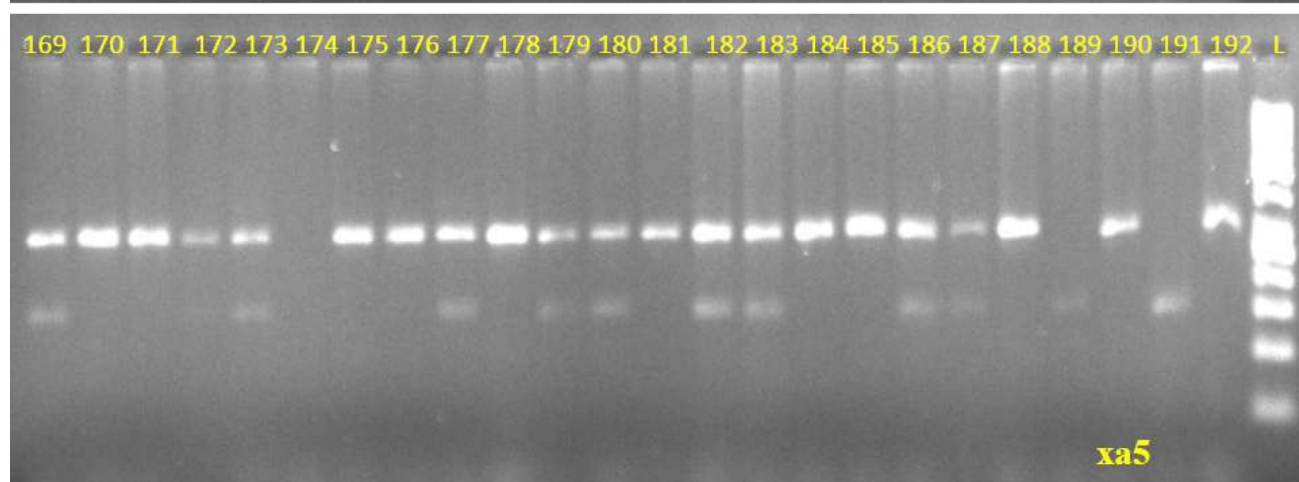
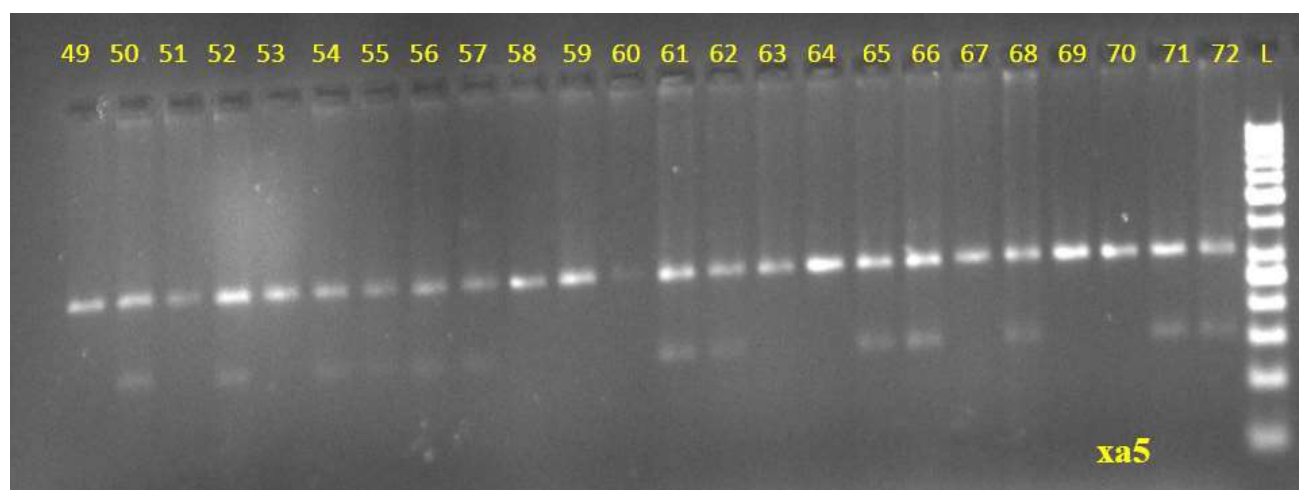


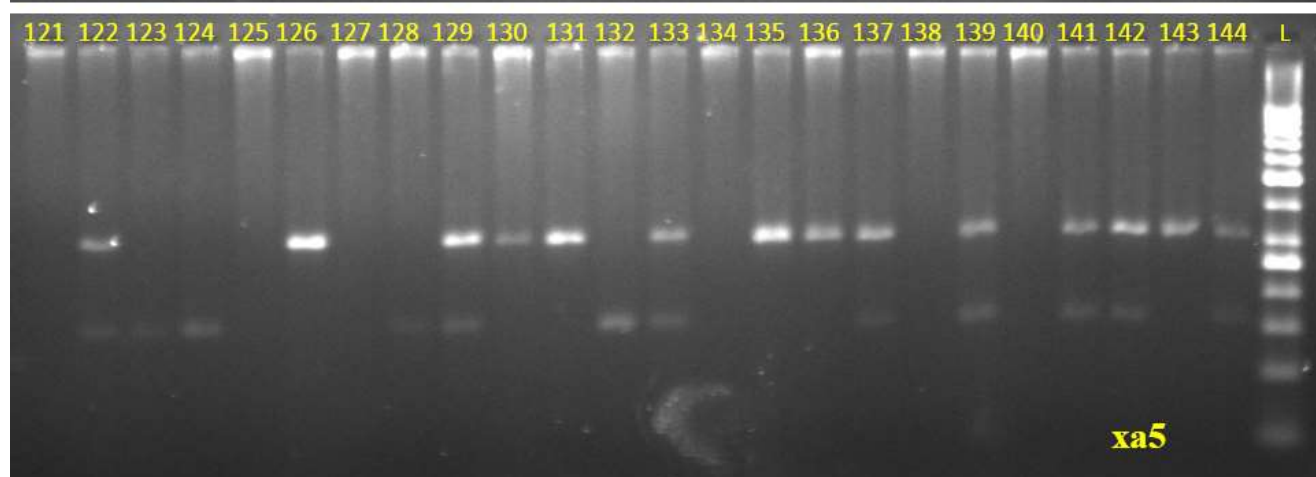
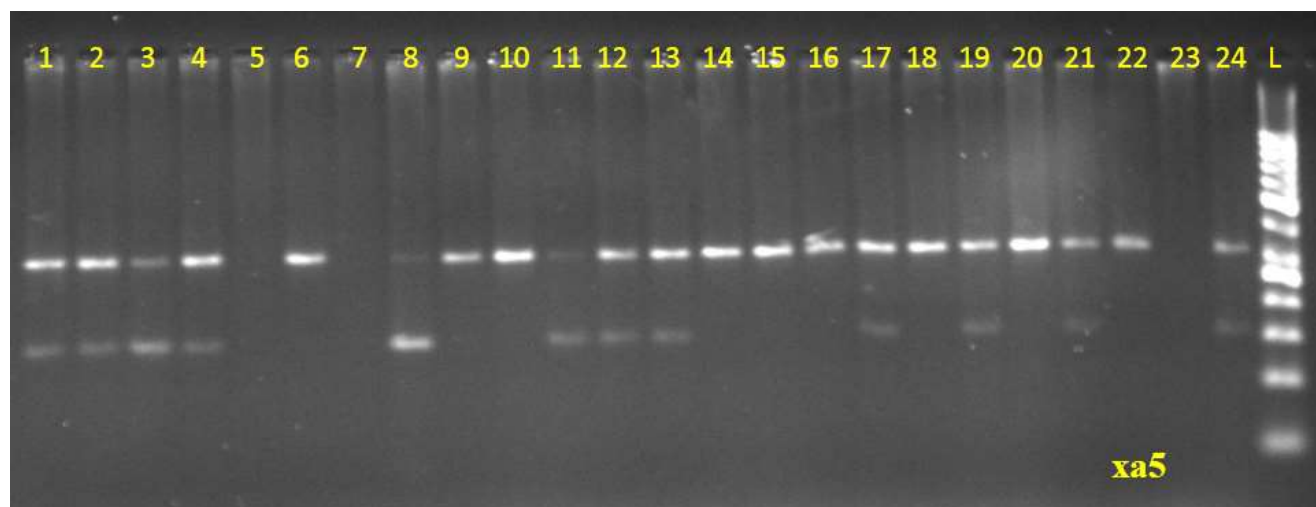


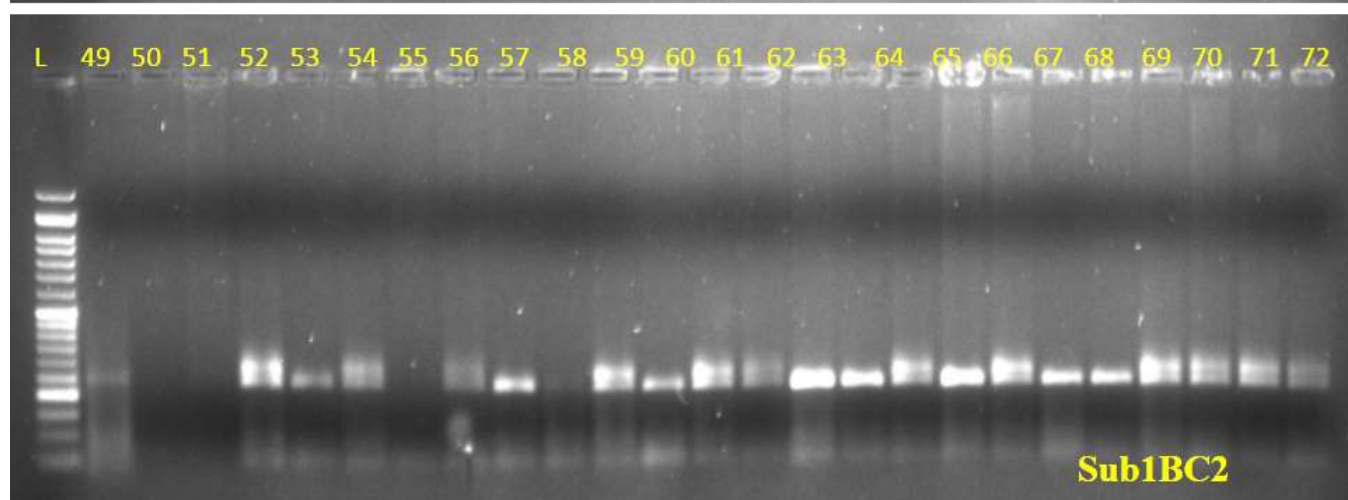
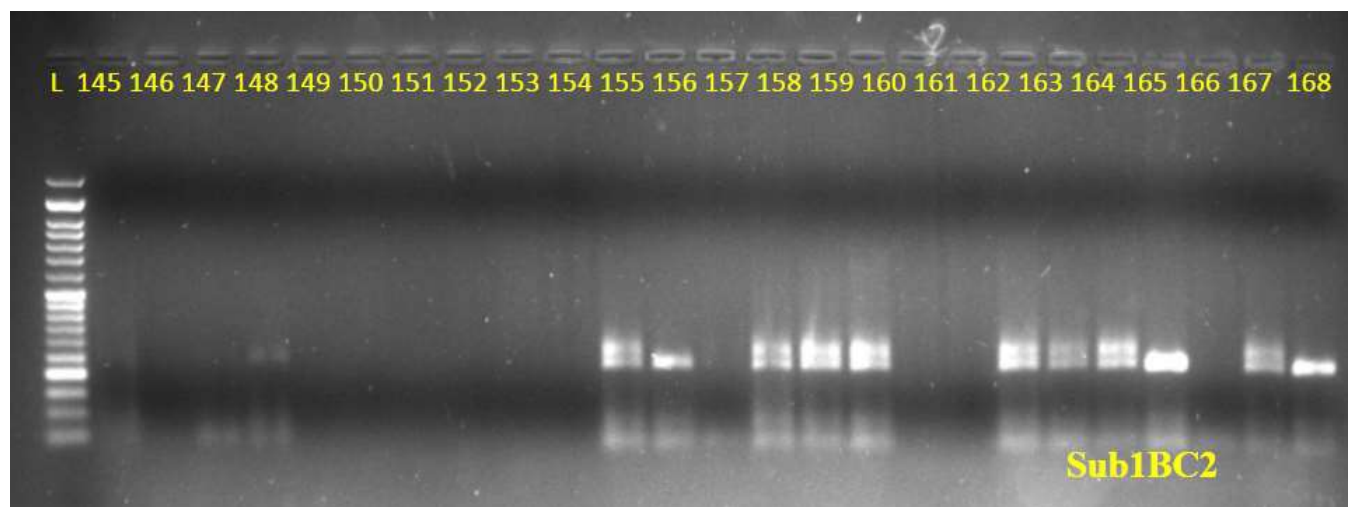


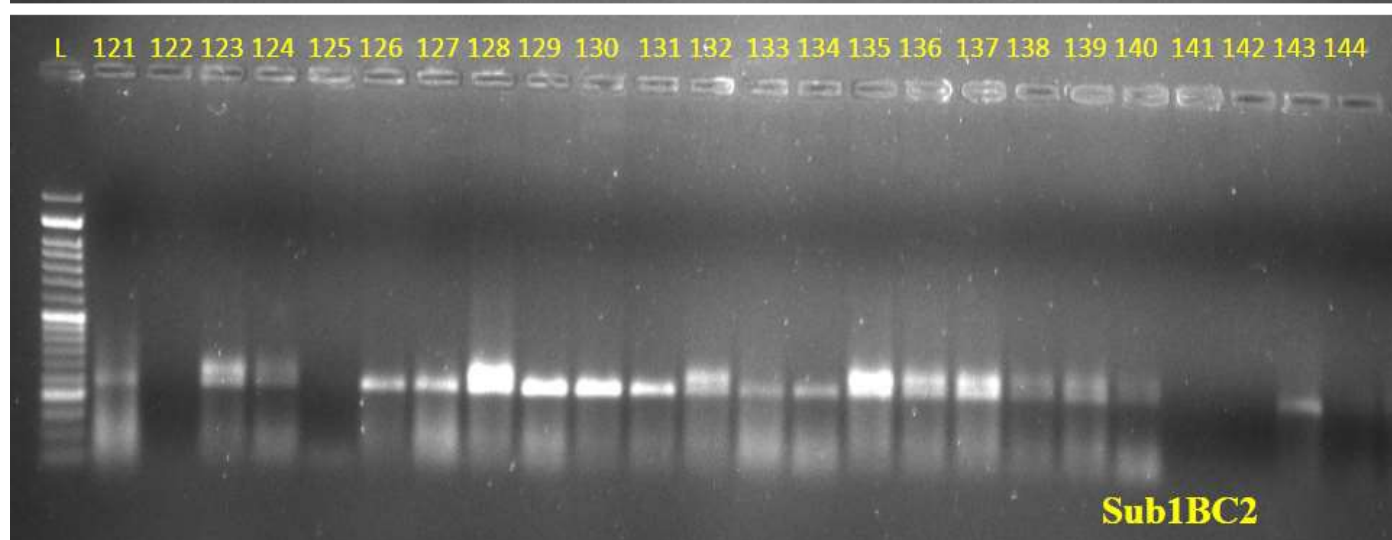
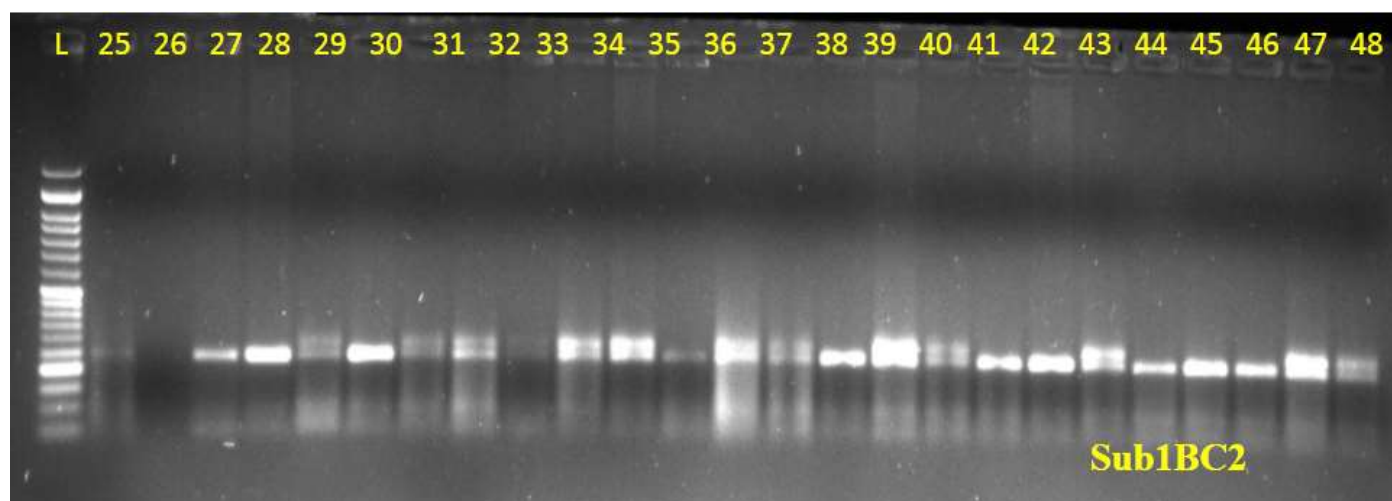


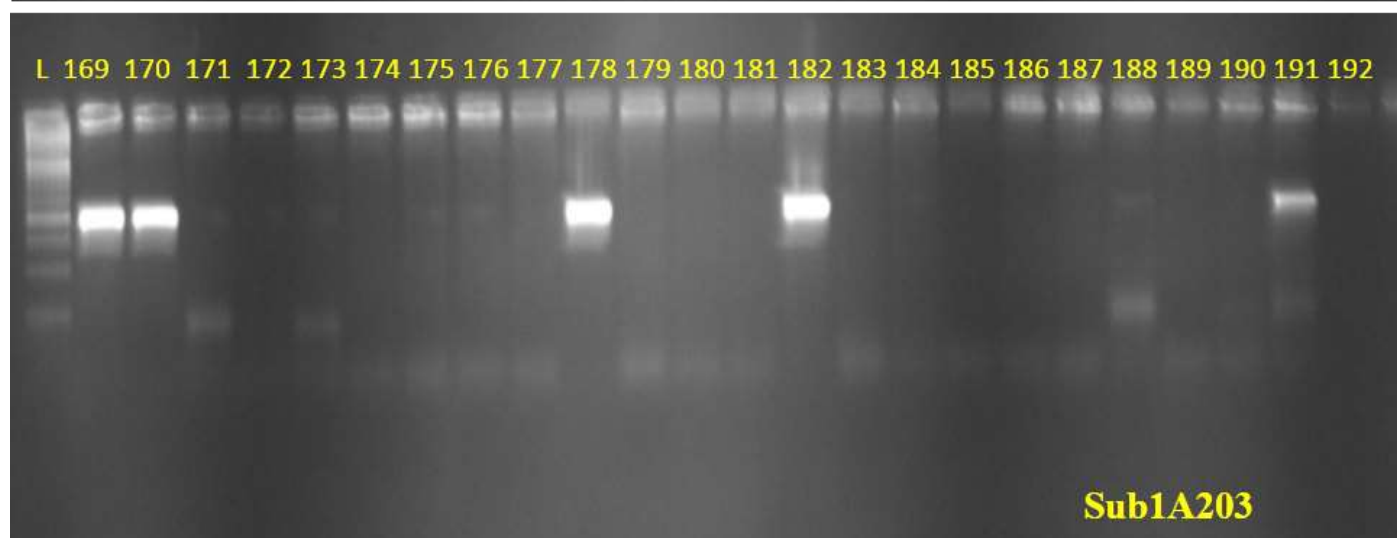
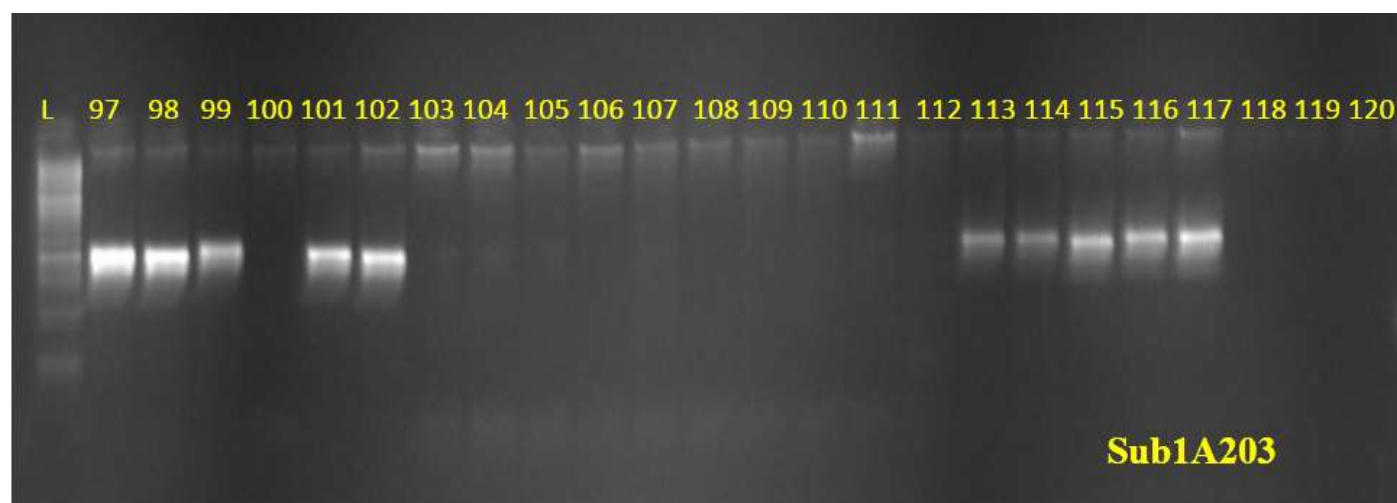


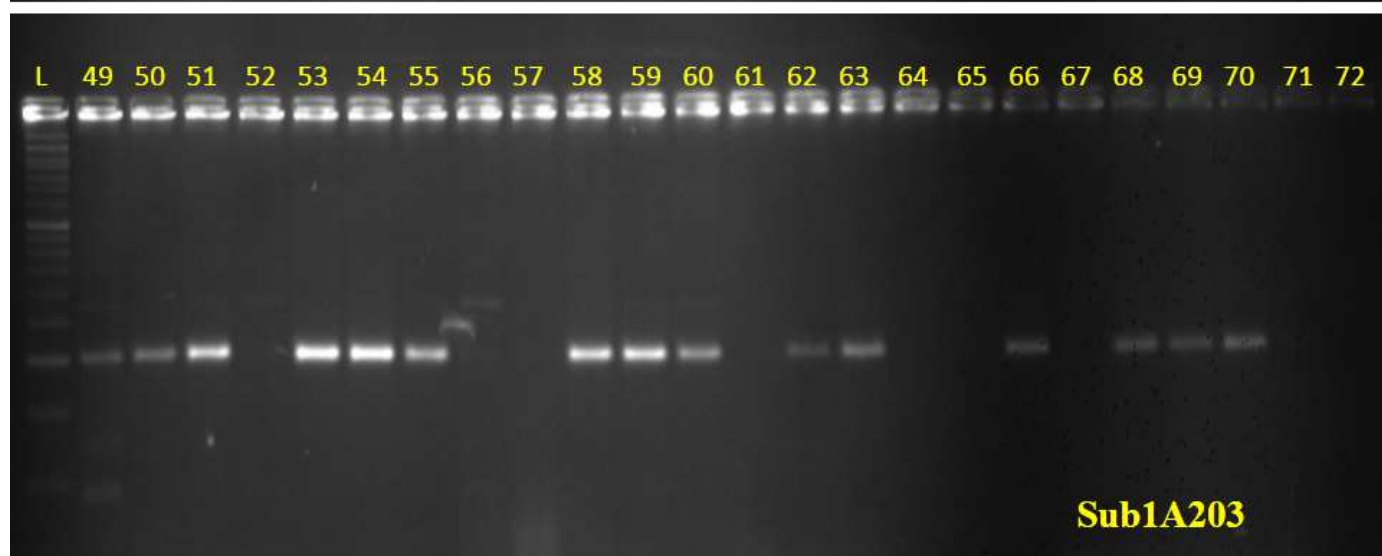
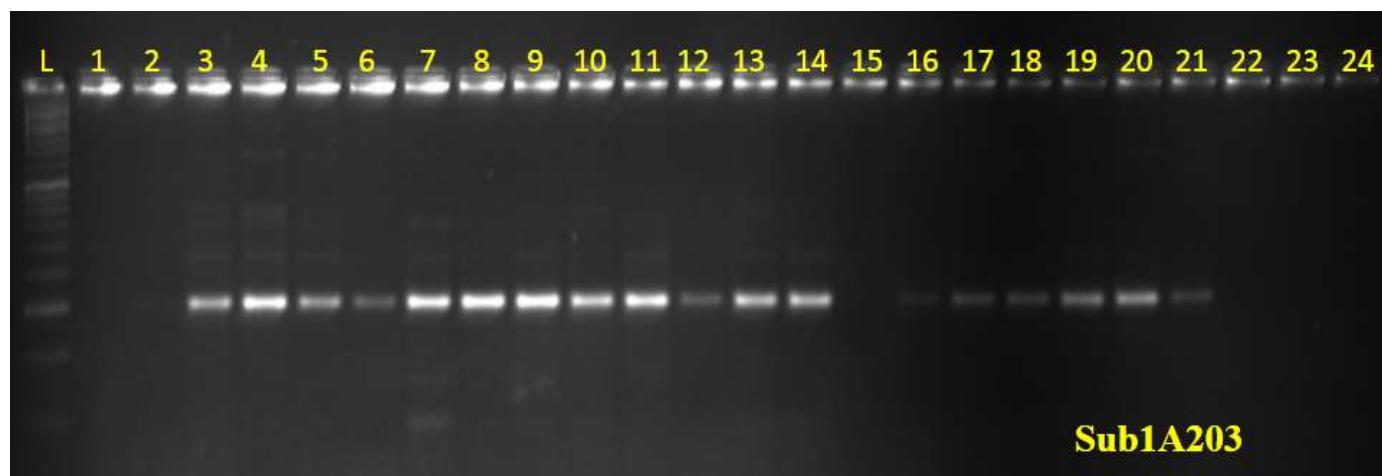




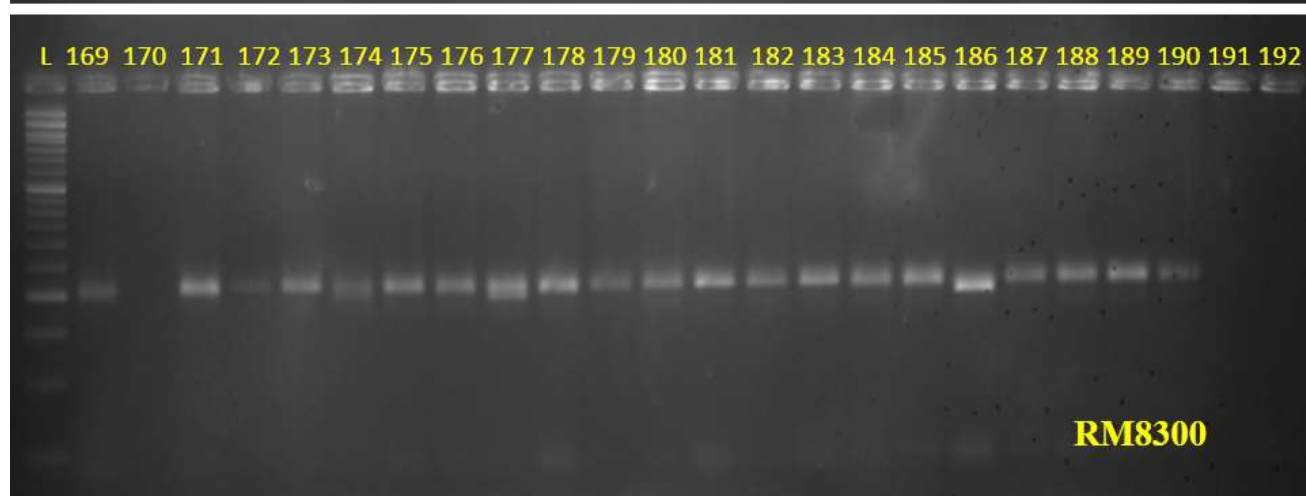
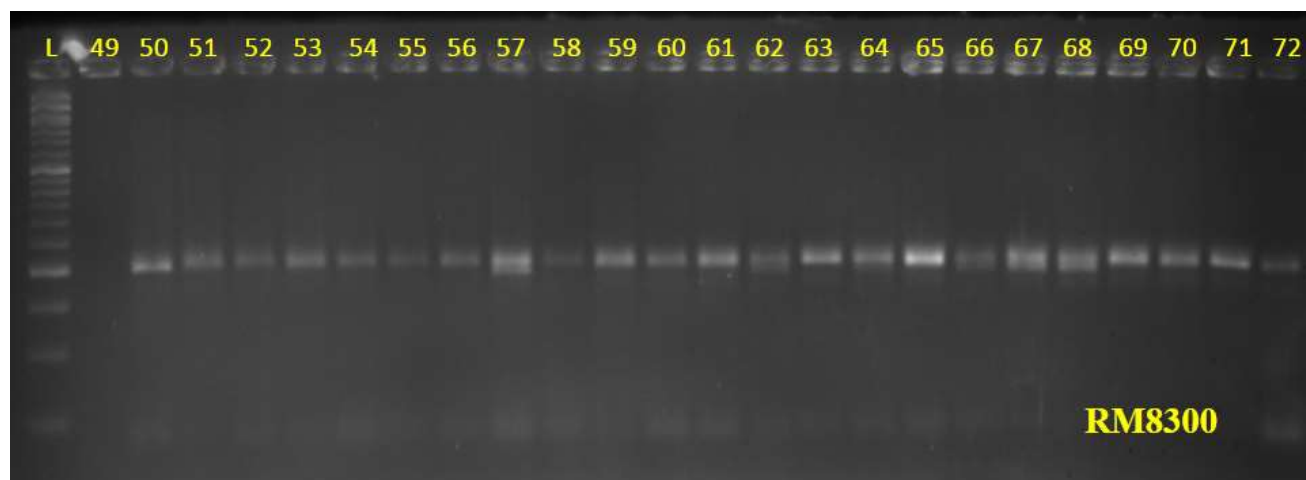


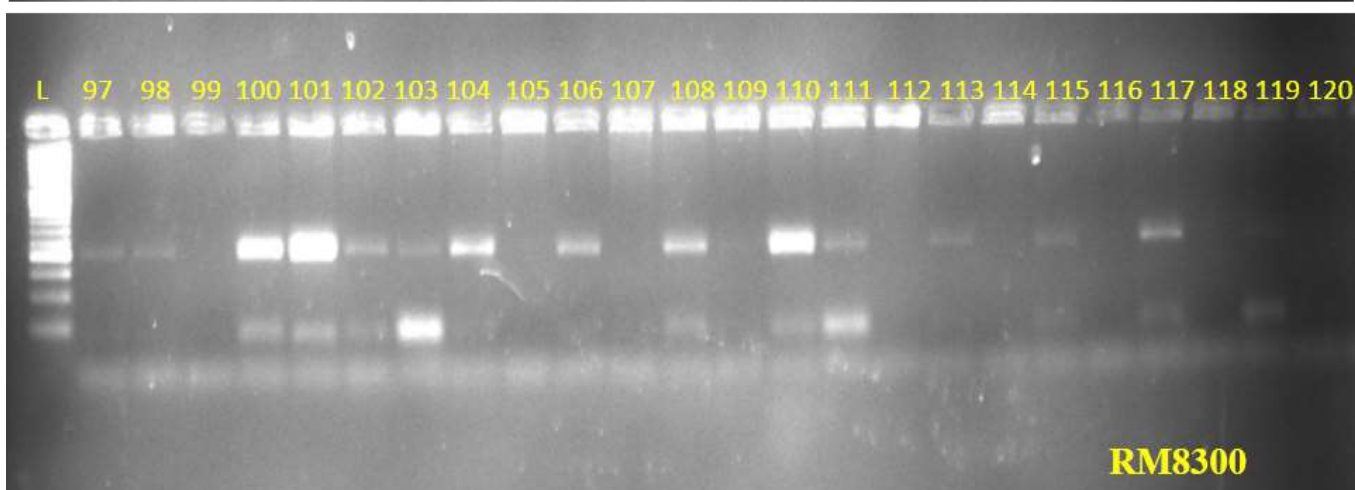
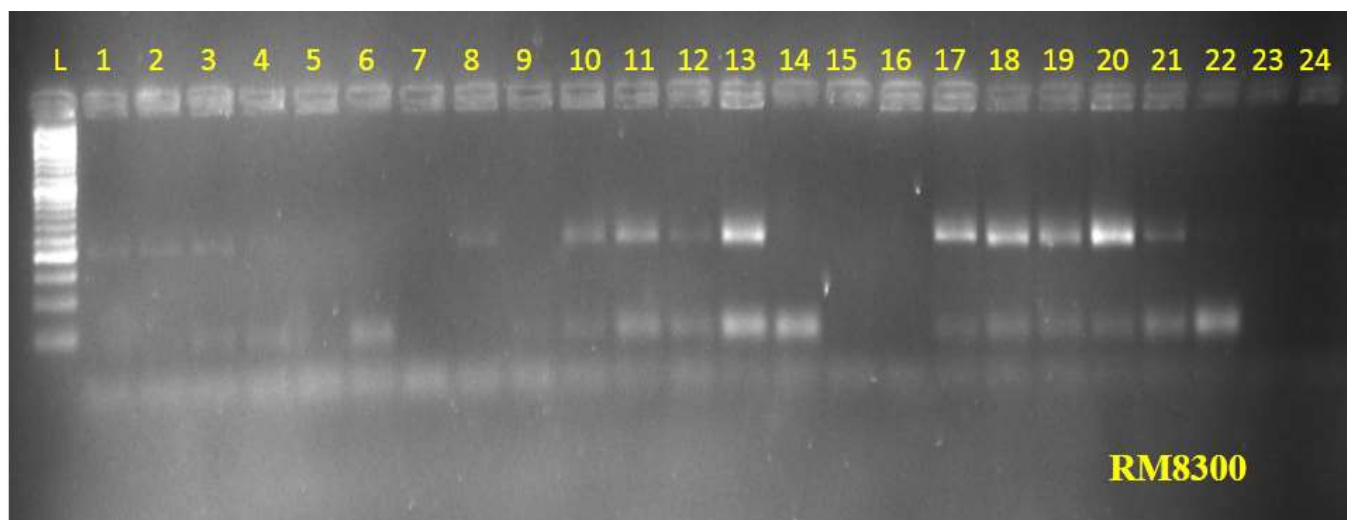




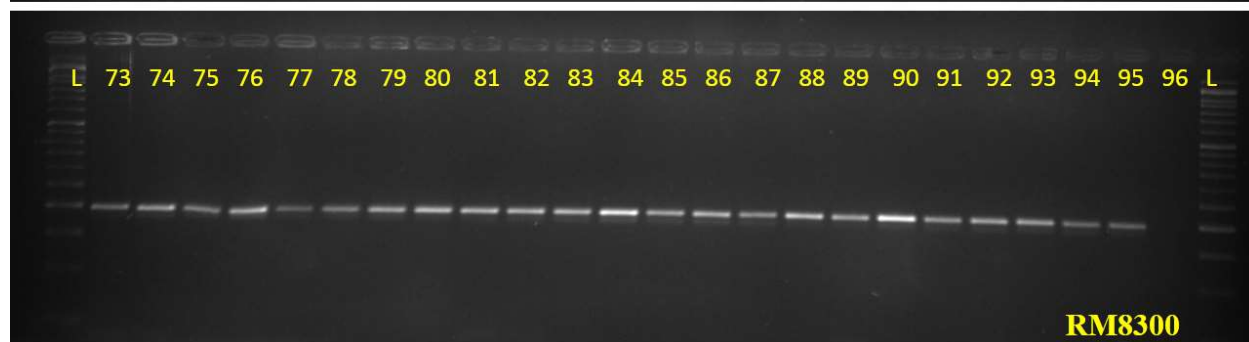
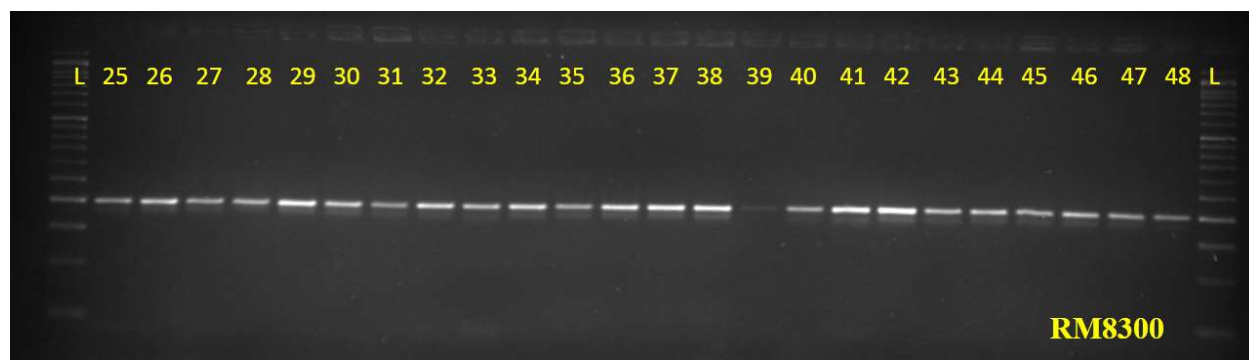


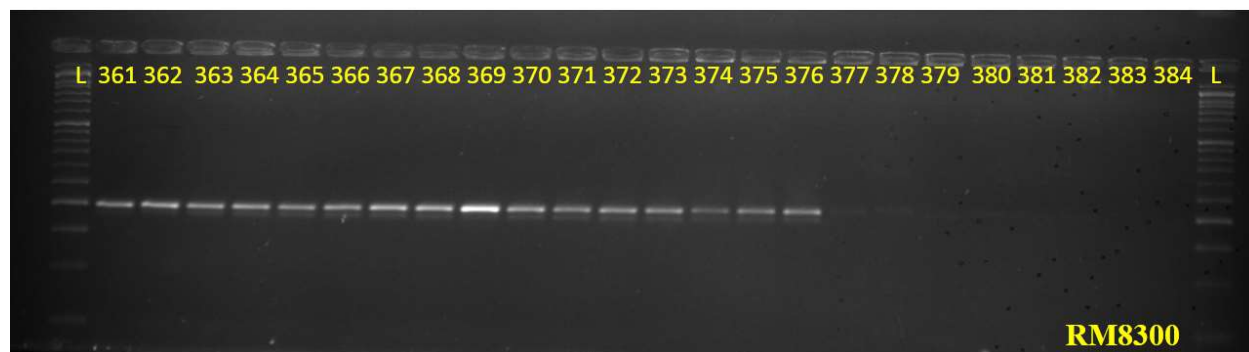
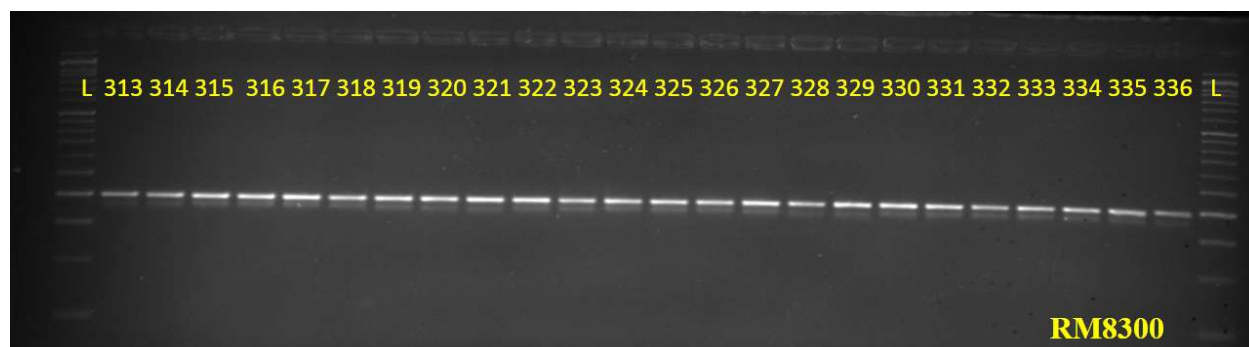


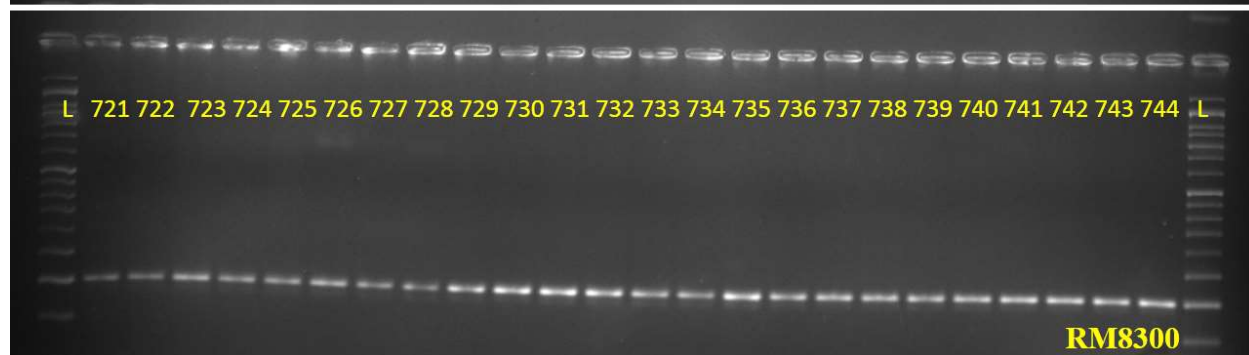
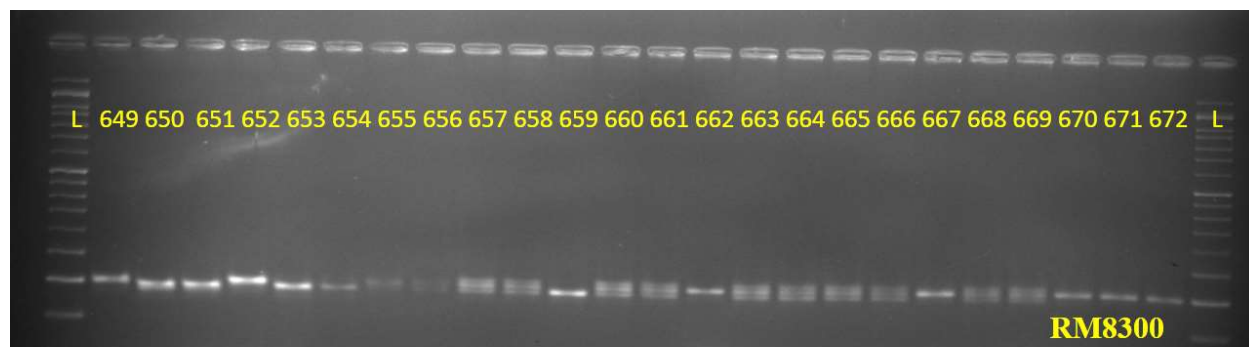
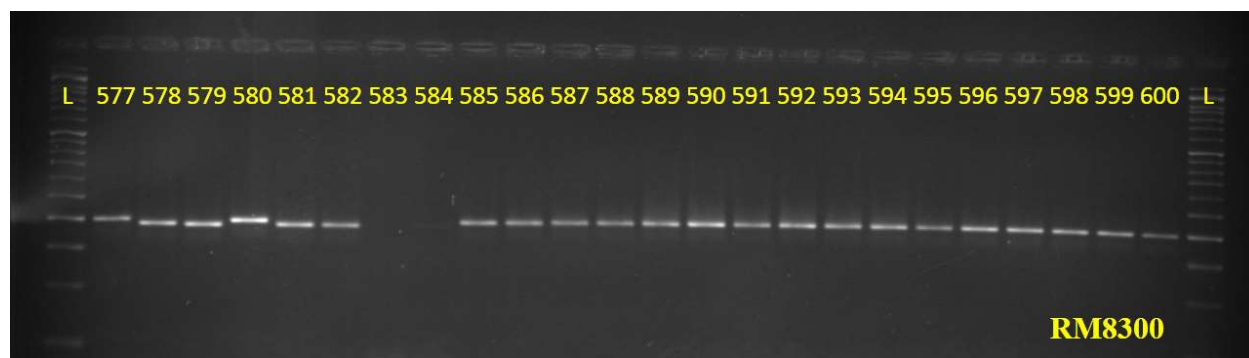


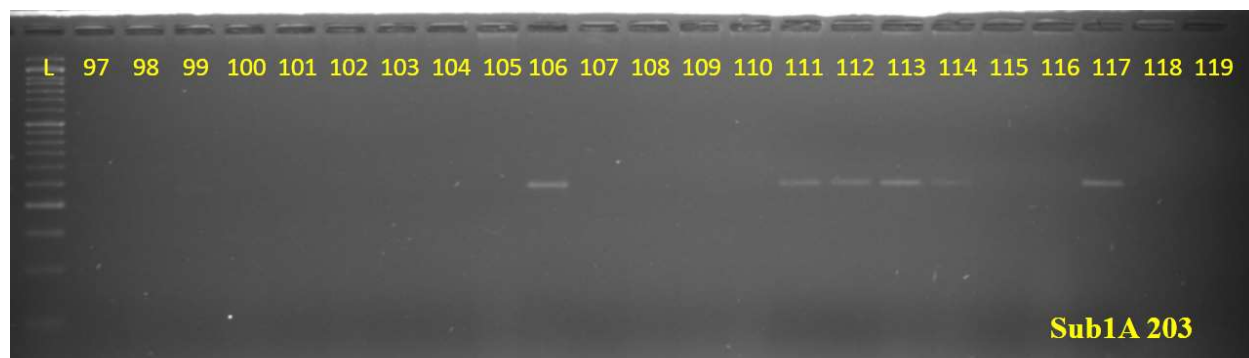
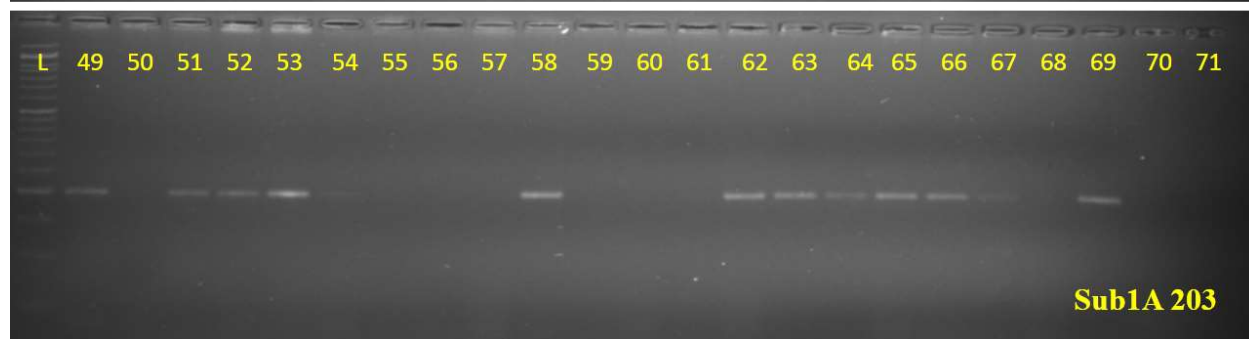
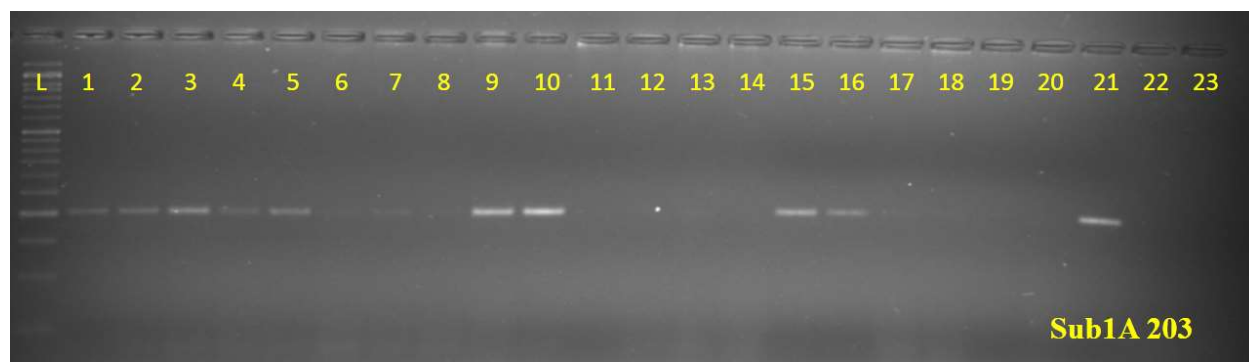


Supplementary figure S6. Molecular screening of BC3F1 progenies in rice variety, Ranidhan background for submergence tolerance and bacterial blight resistance

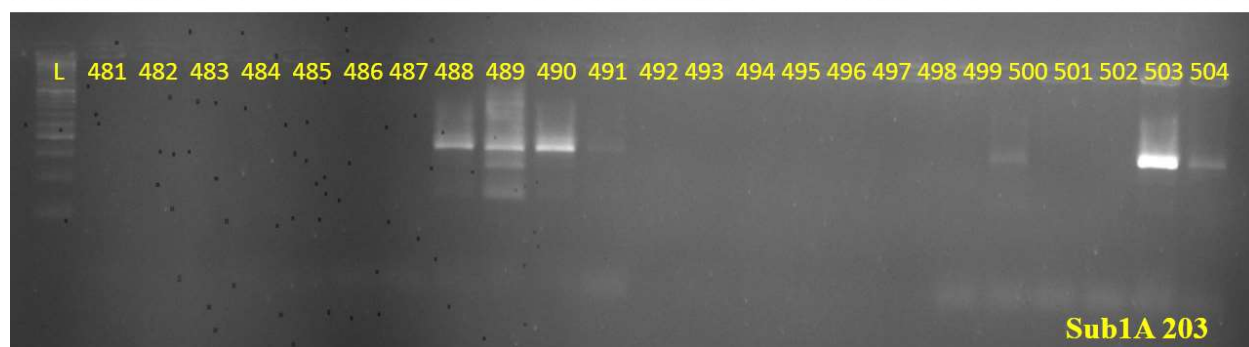
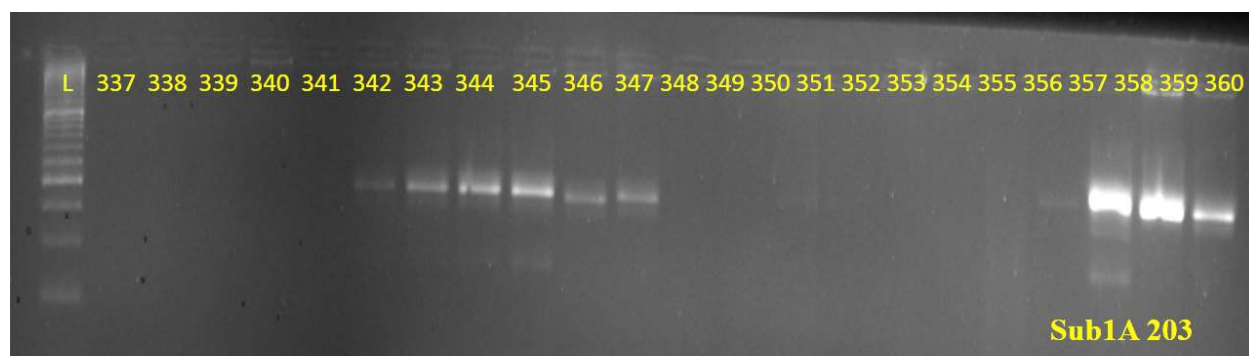




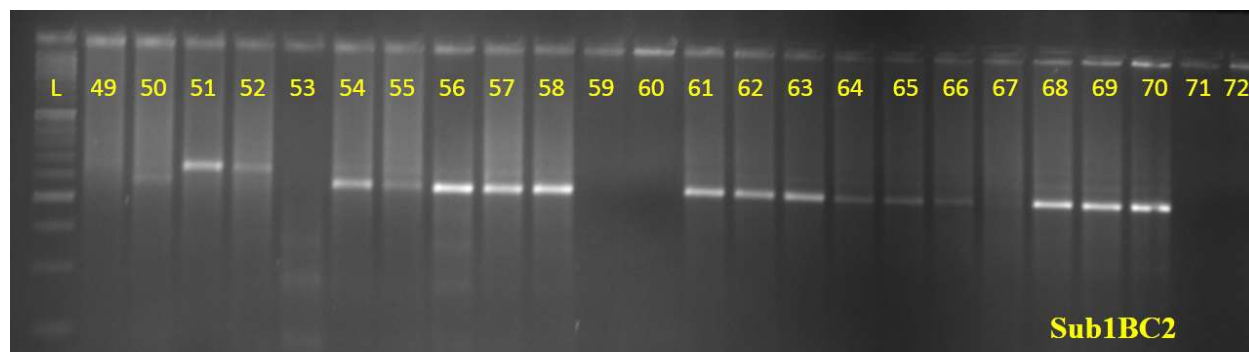
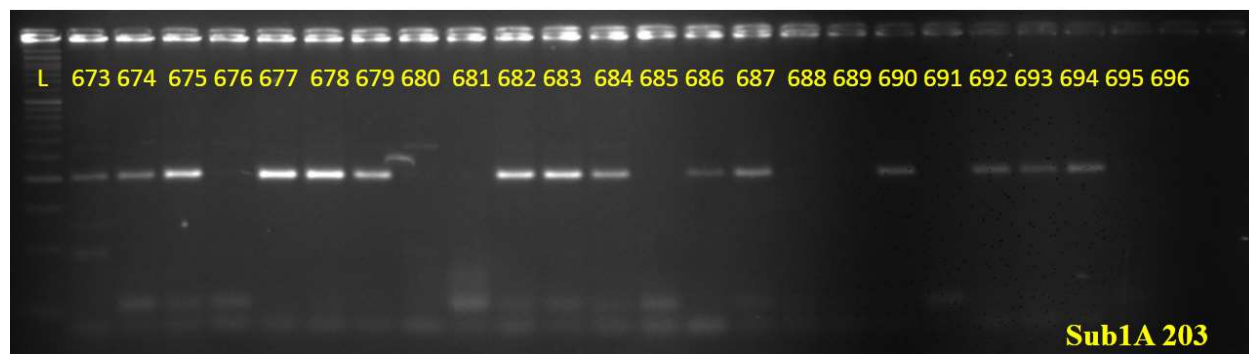
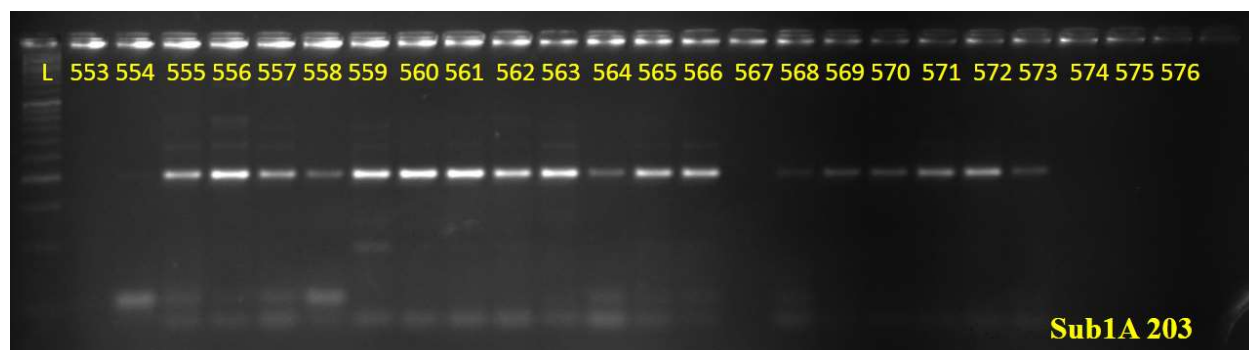


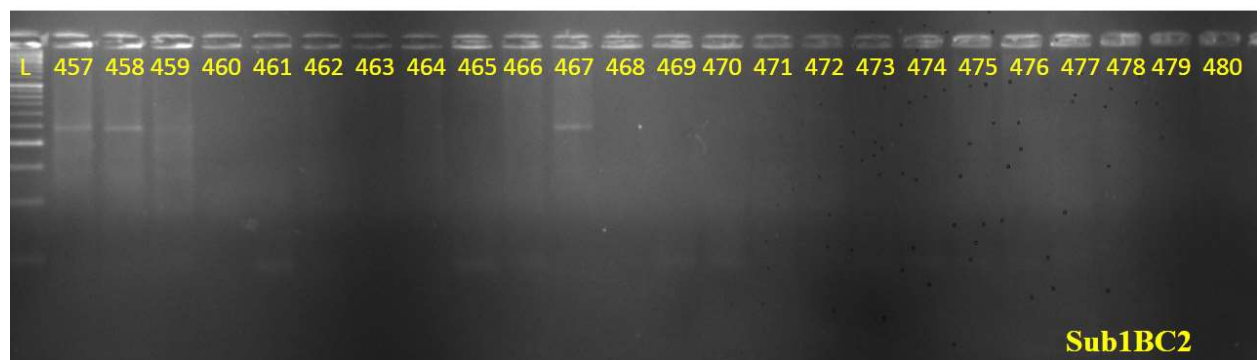
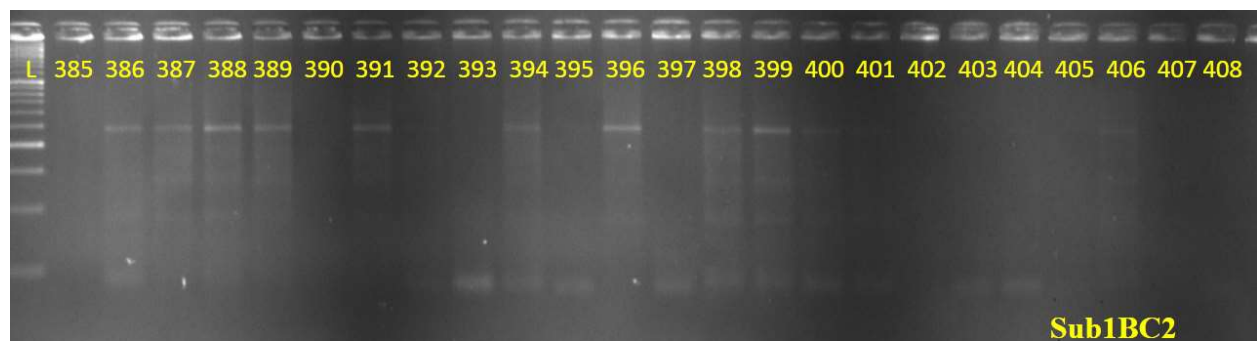
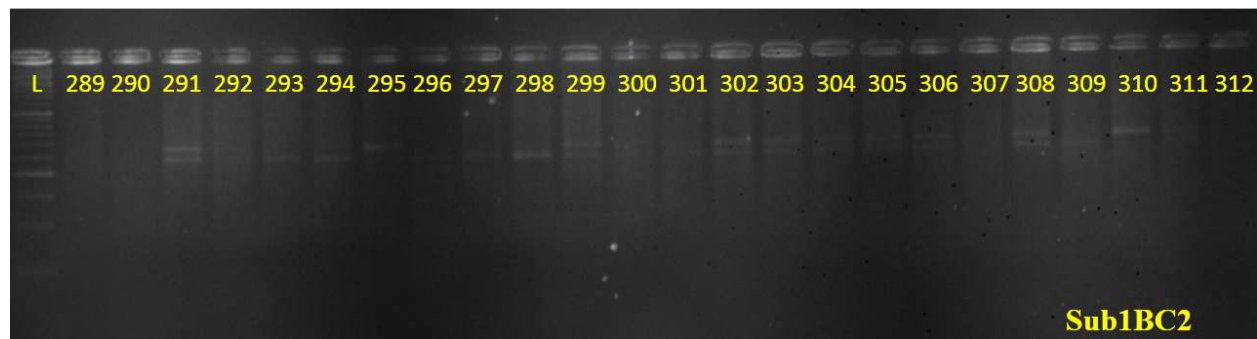
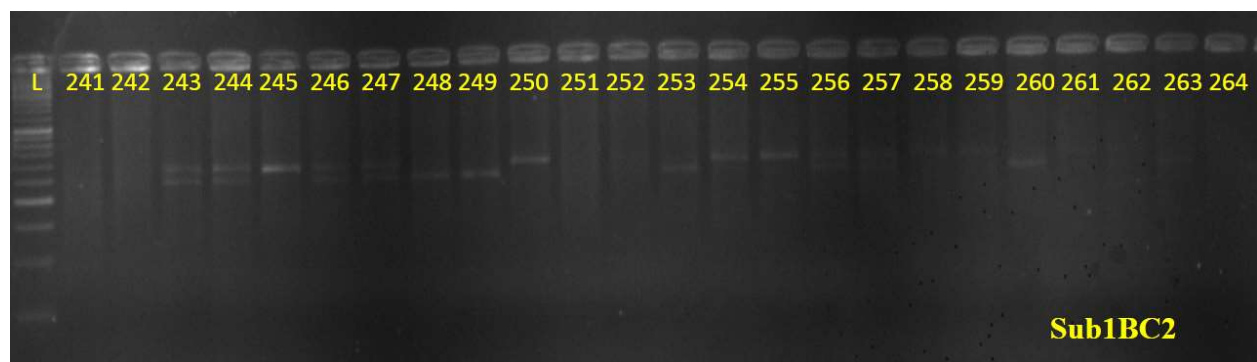


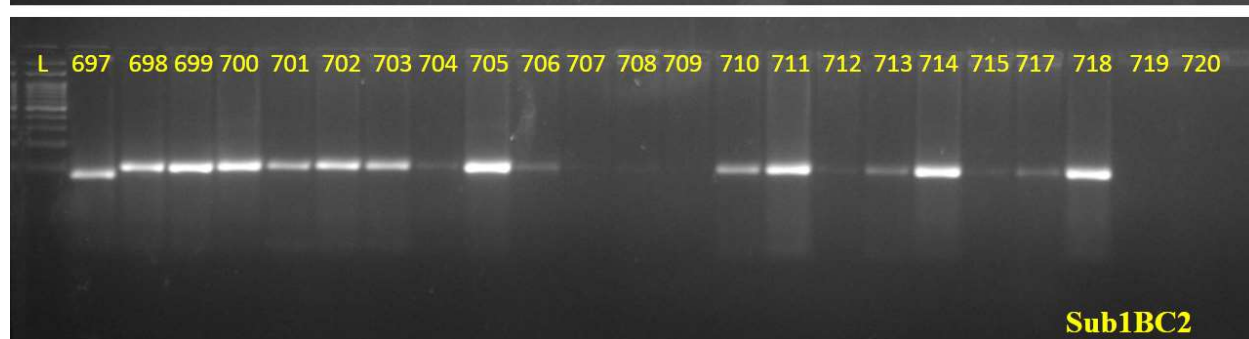
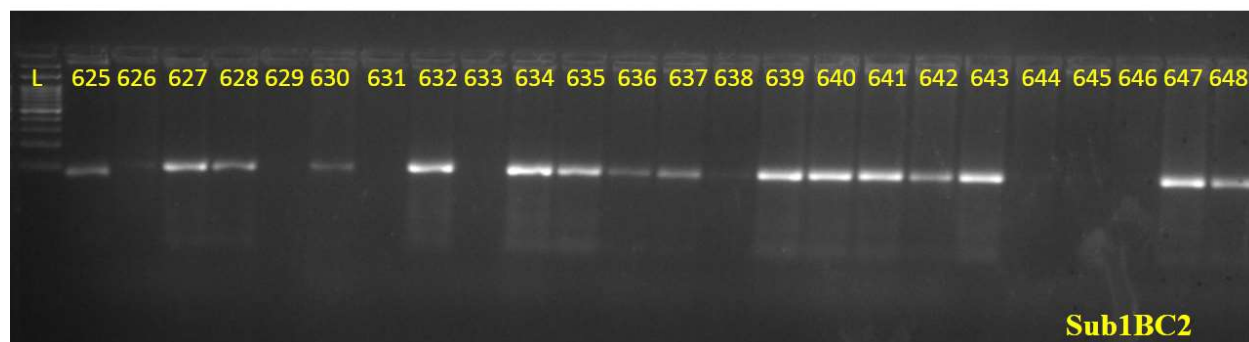
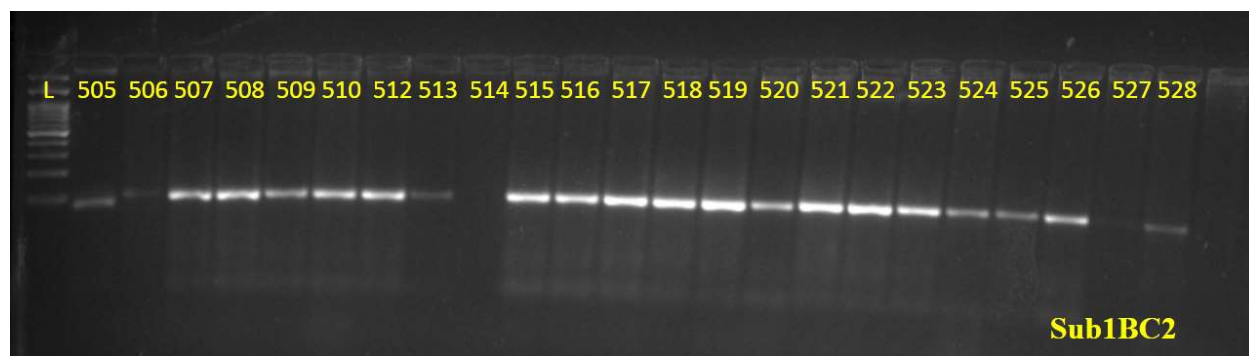


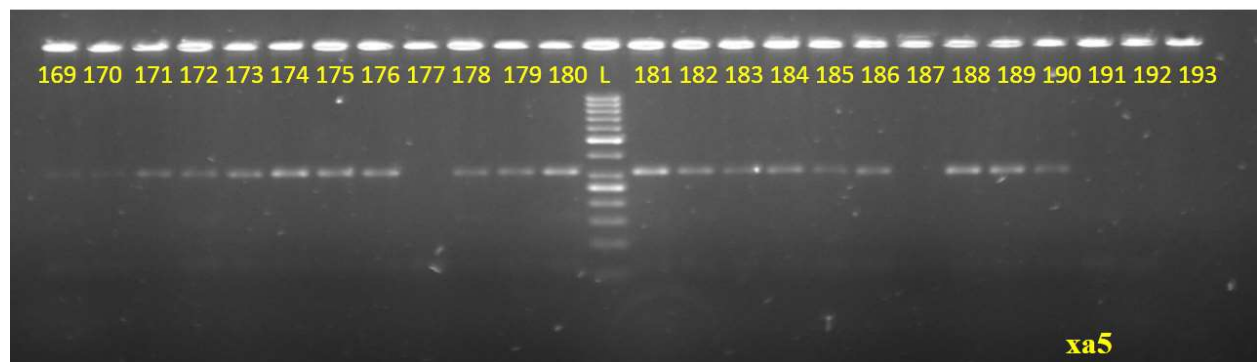
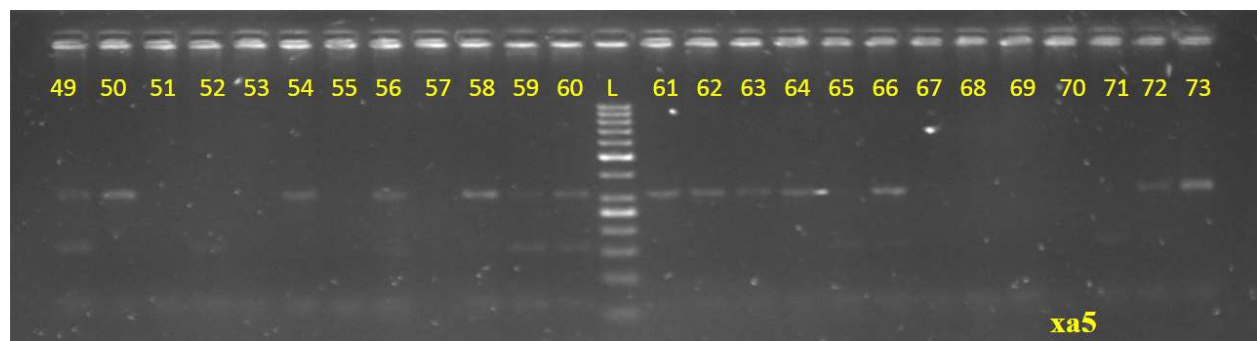
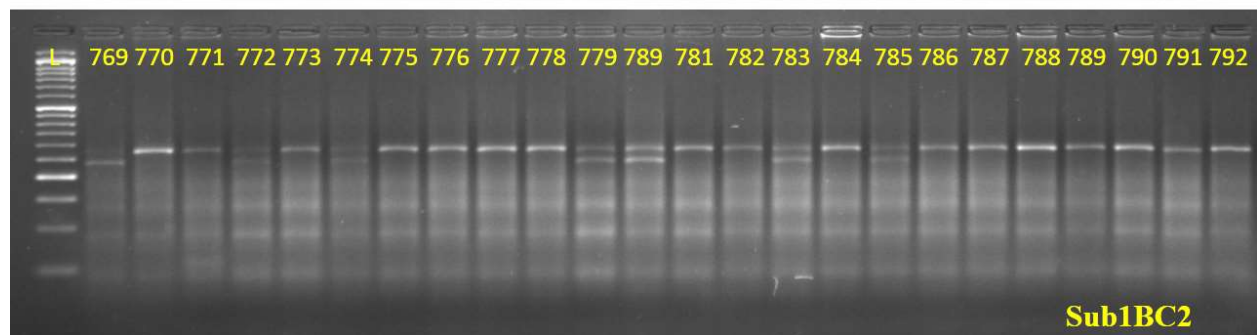
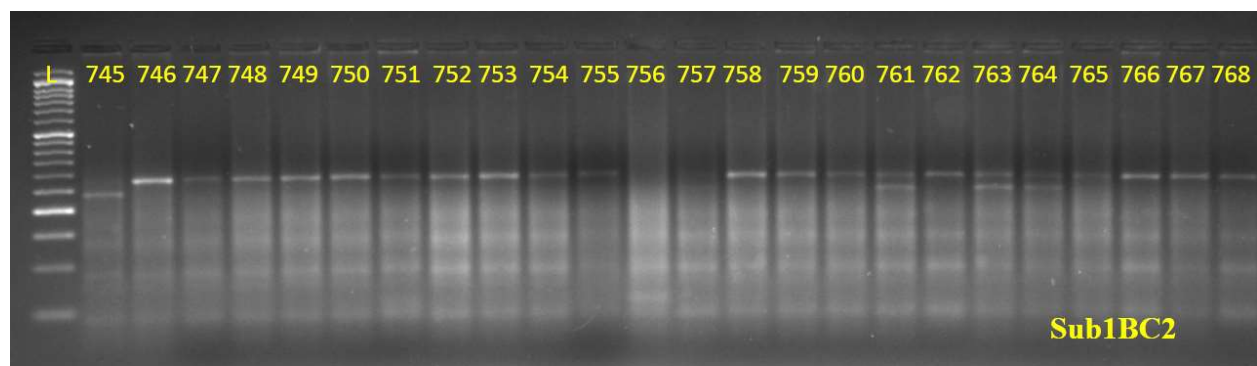




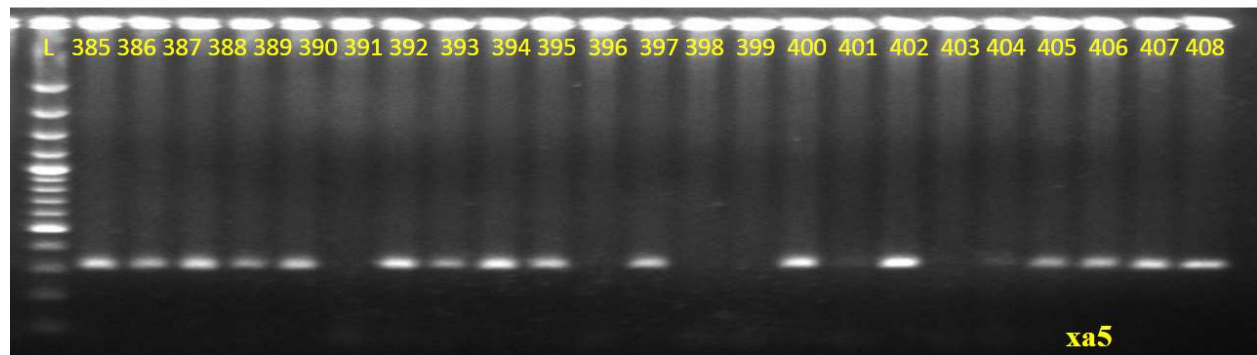
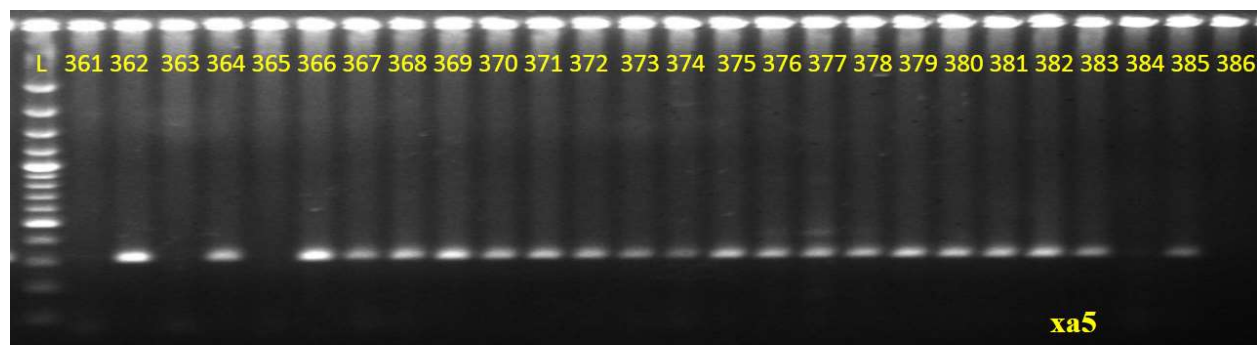
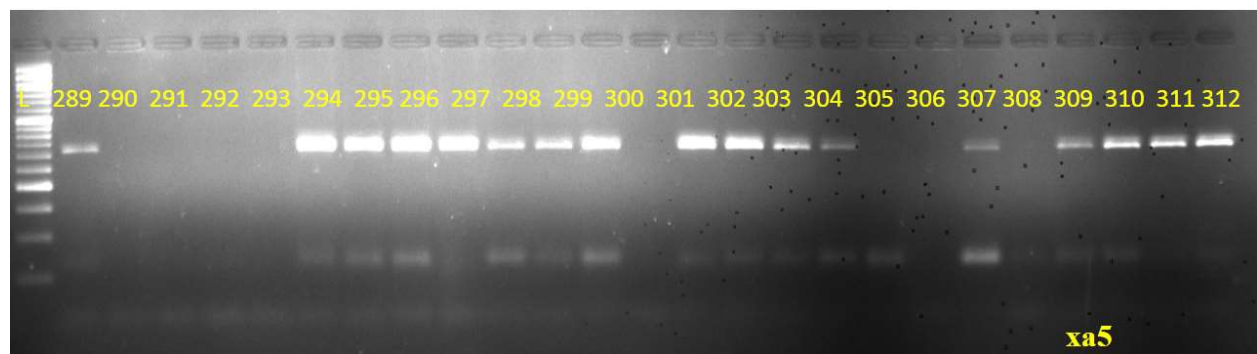
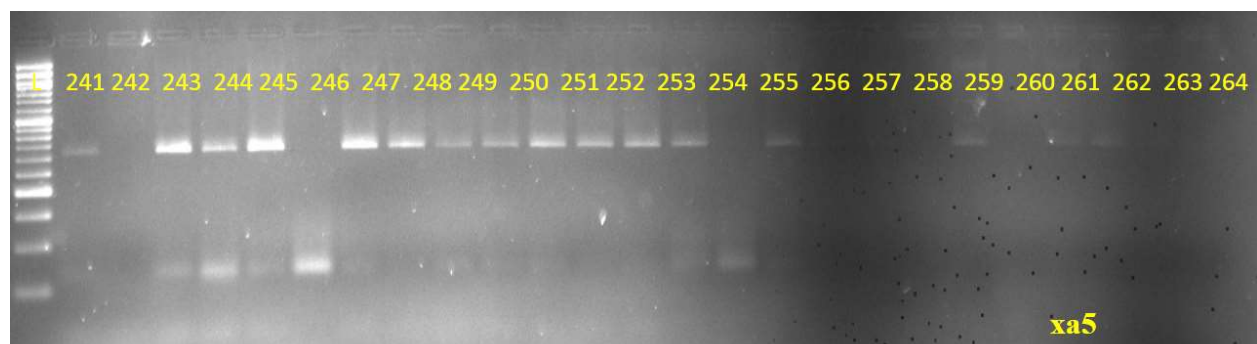


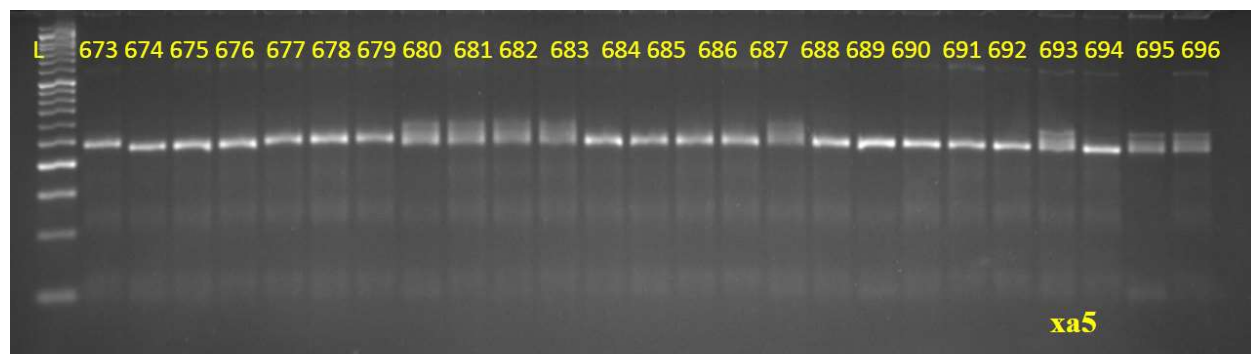
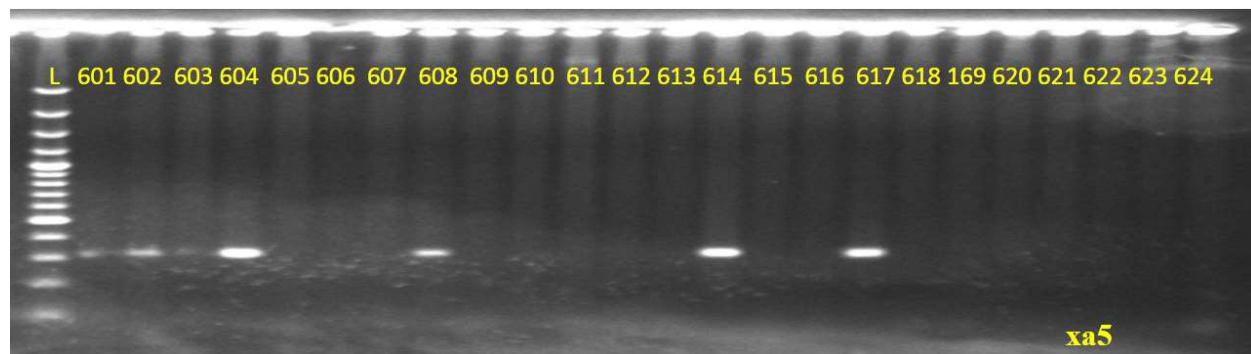
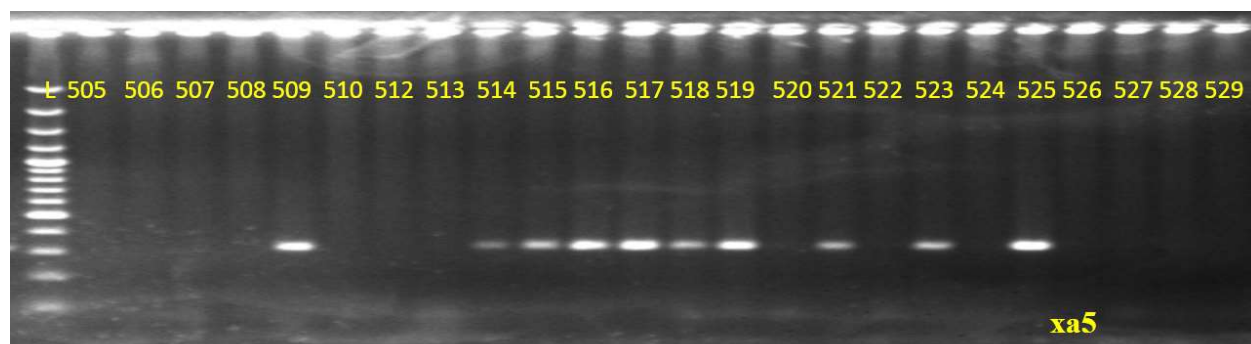


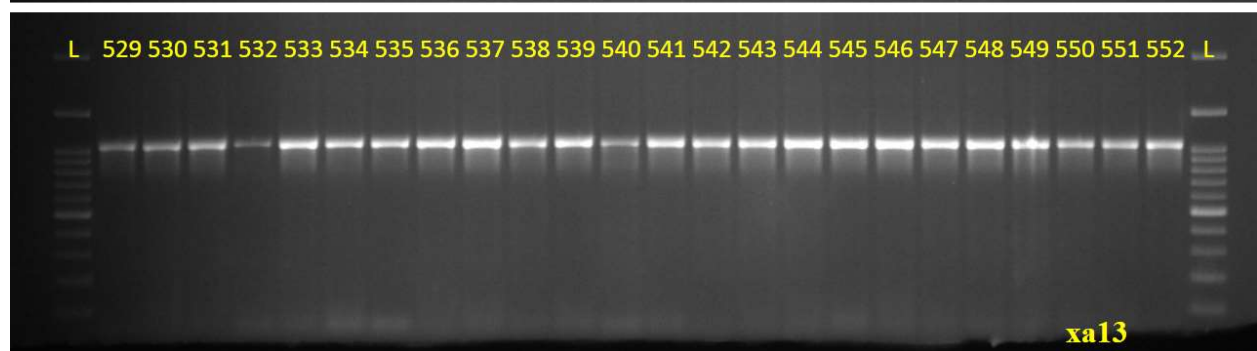
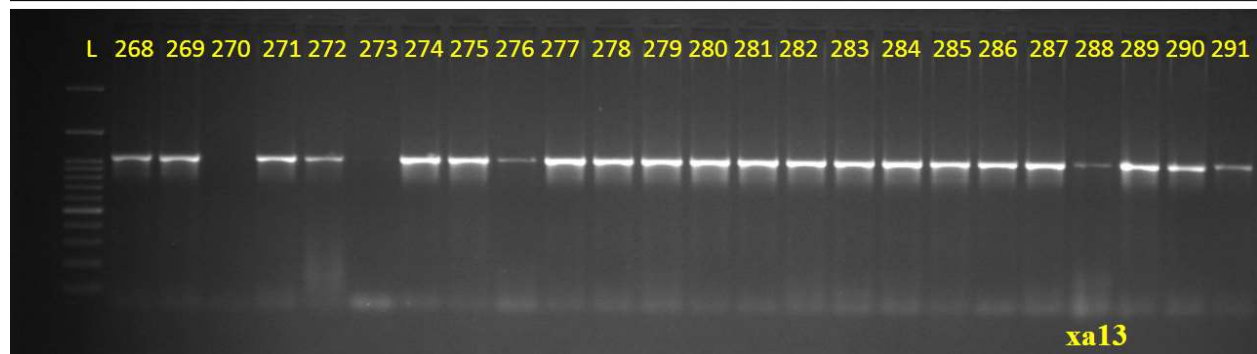
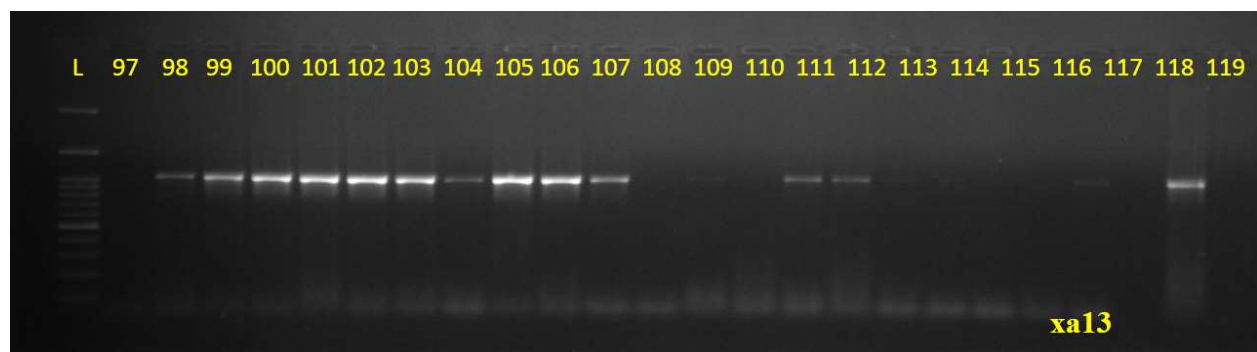




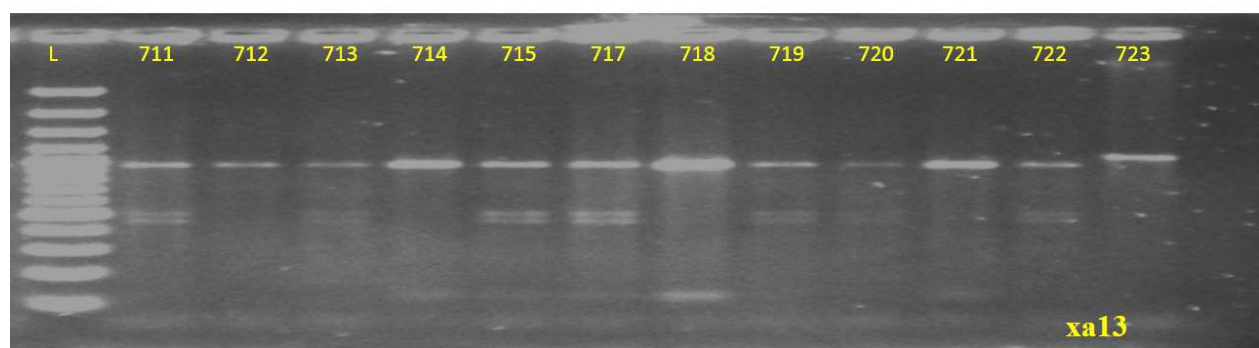
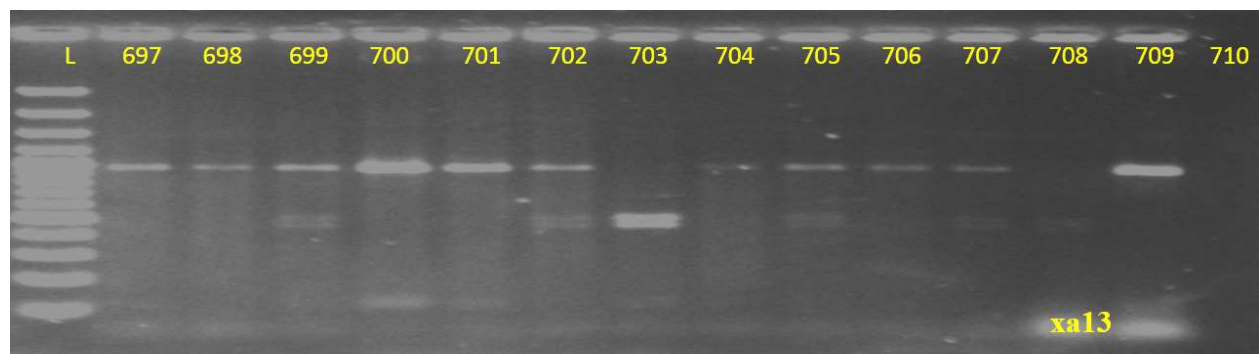
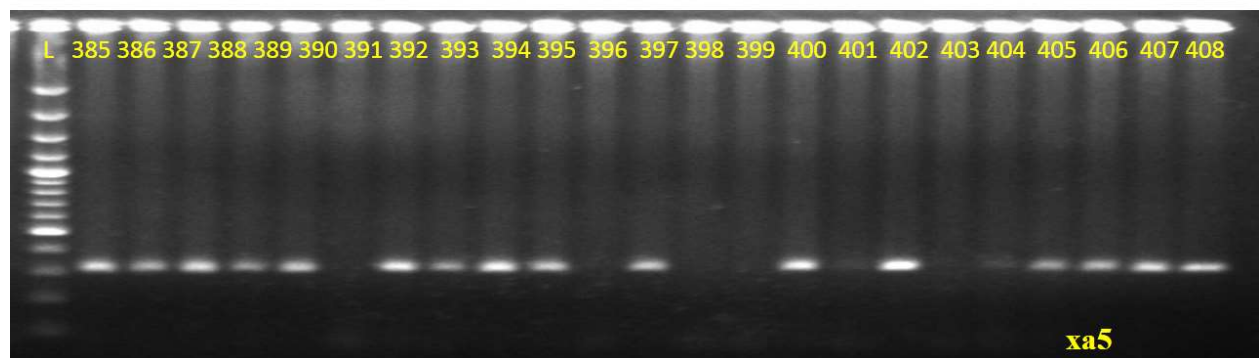
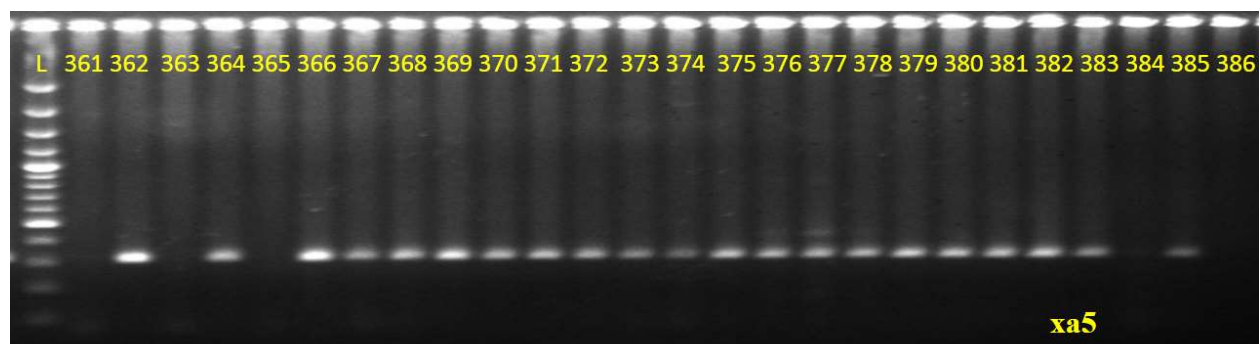


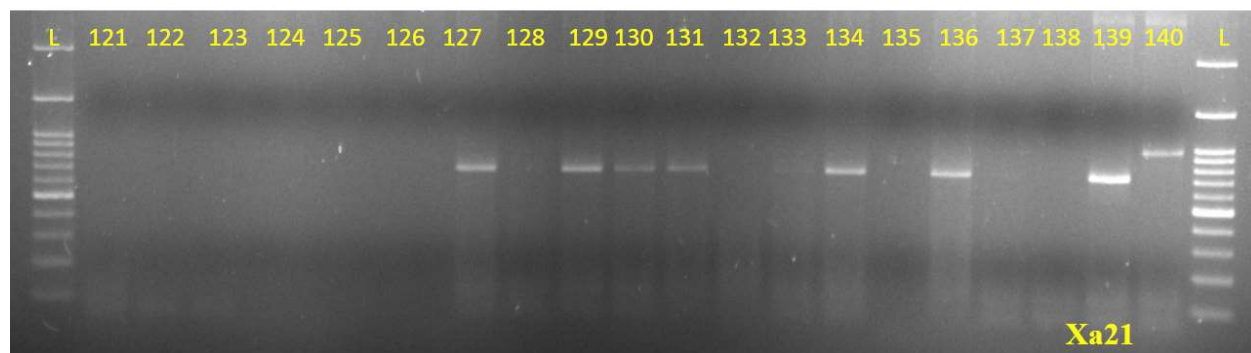
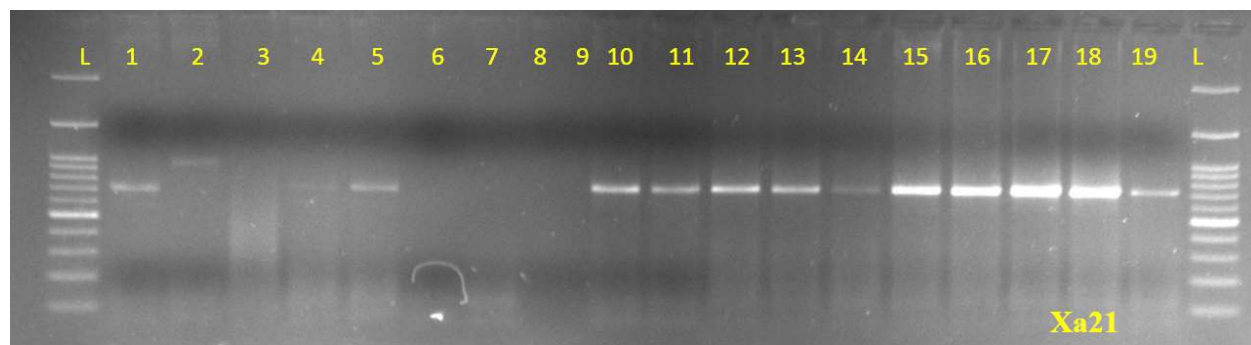
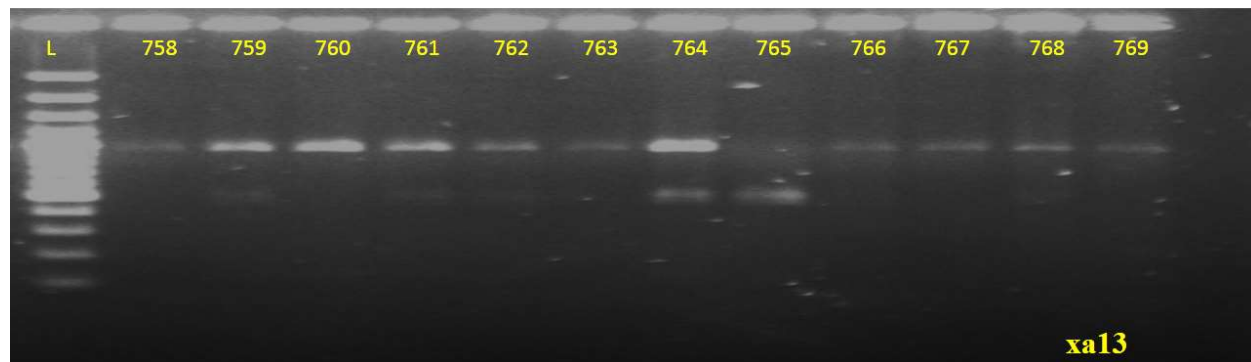
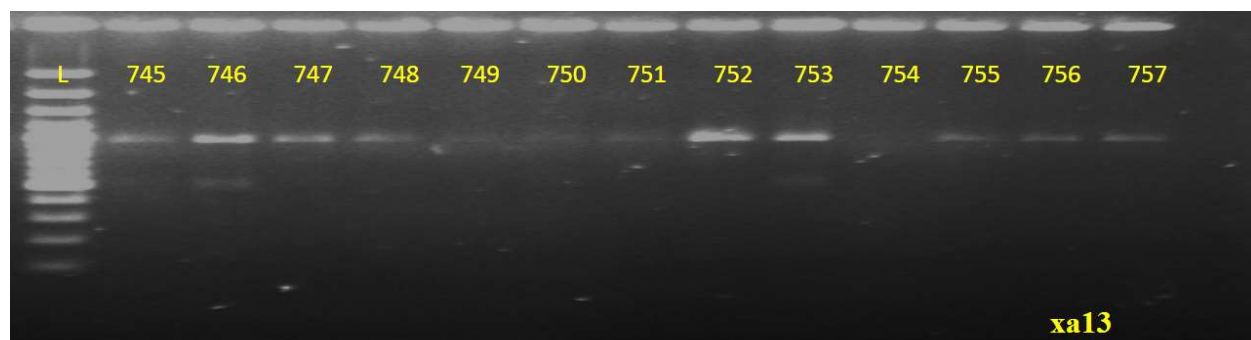


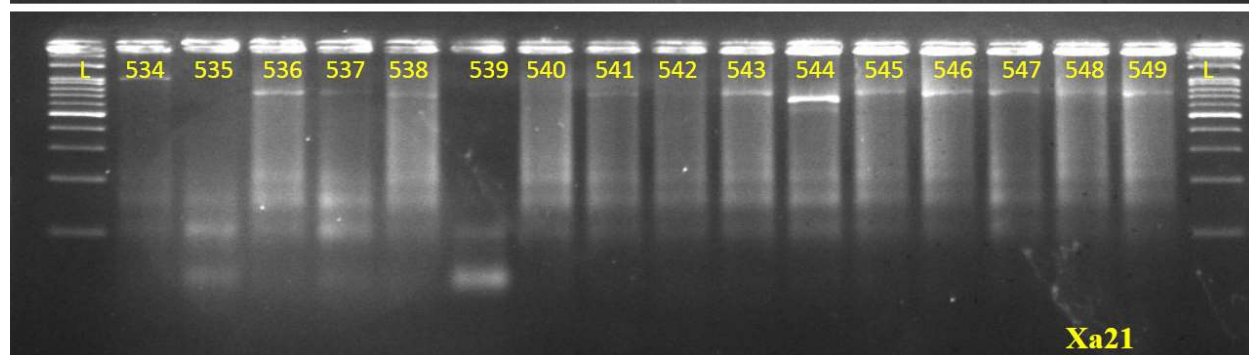
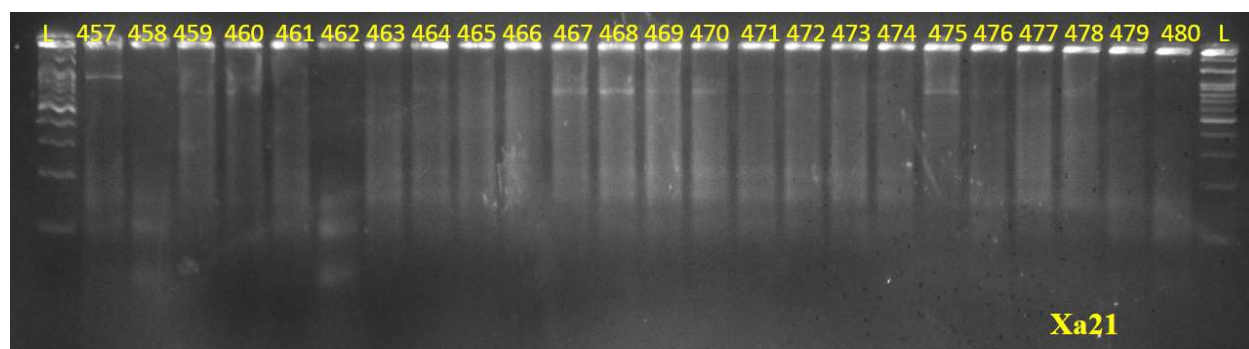
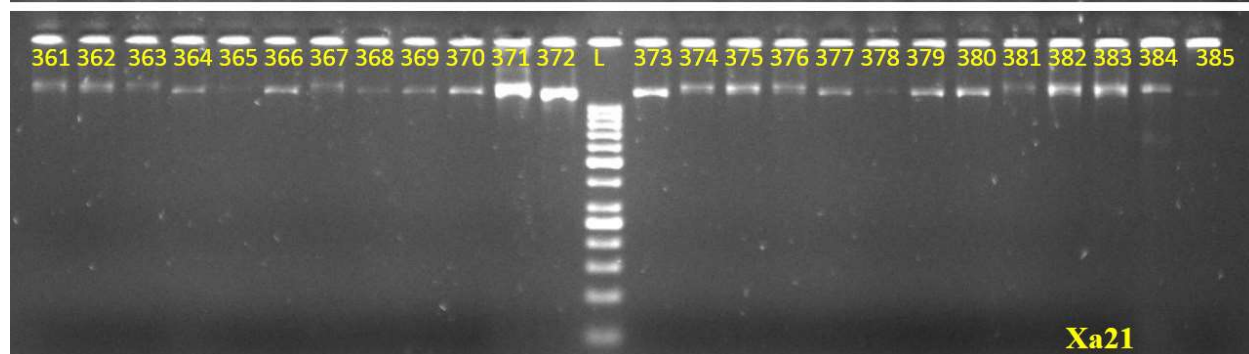
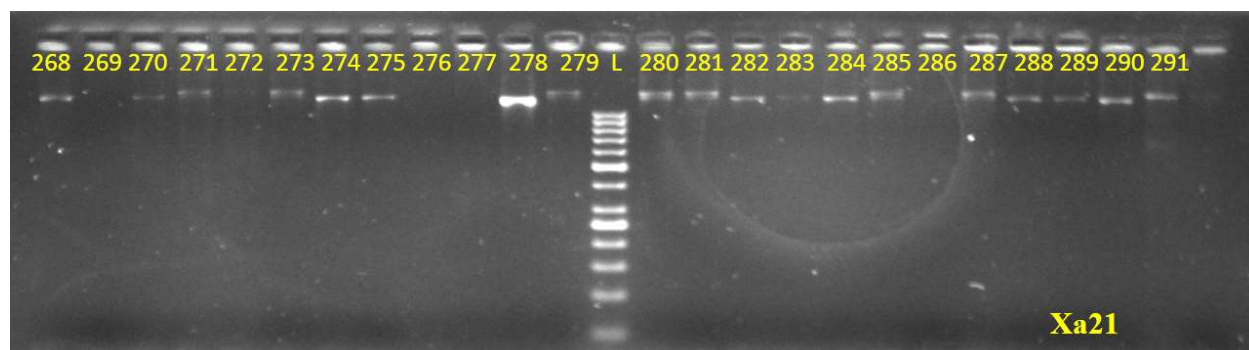


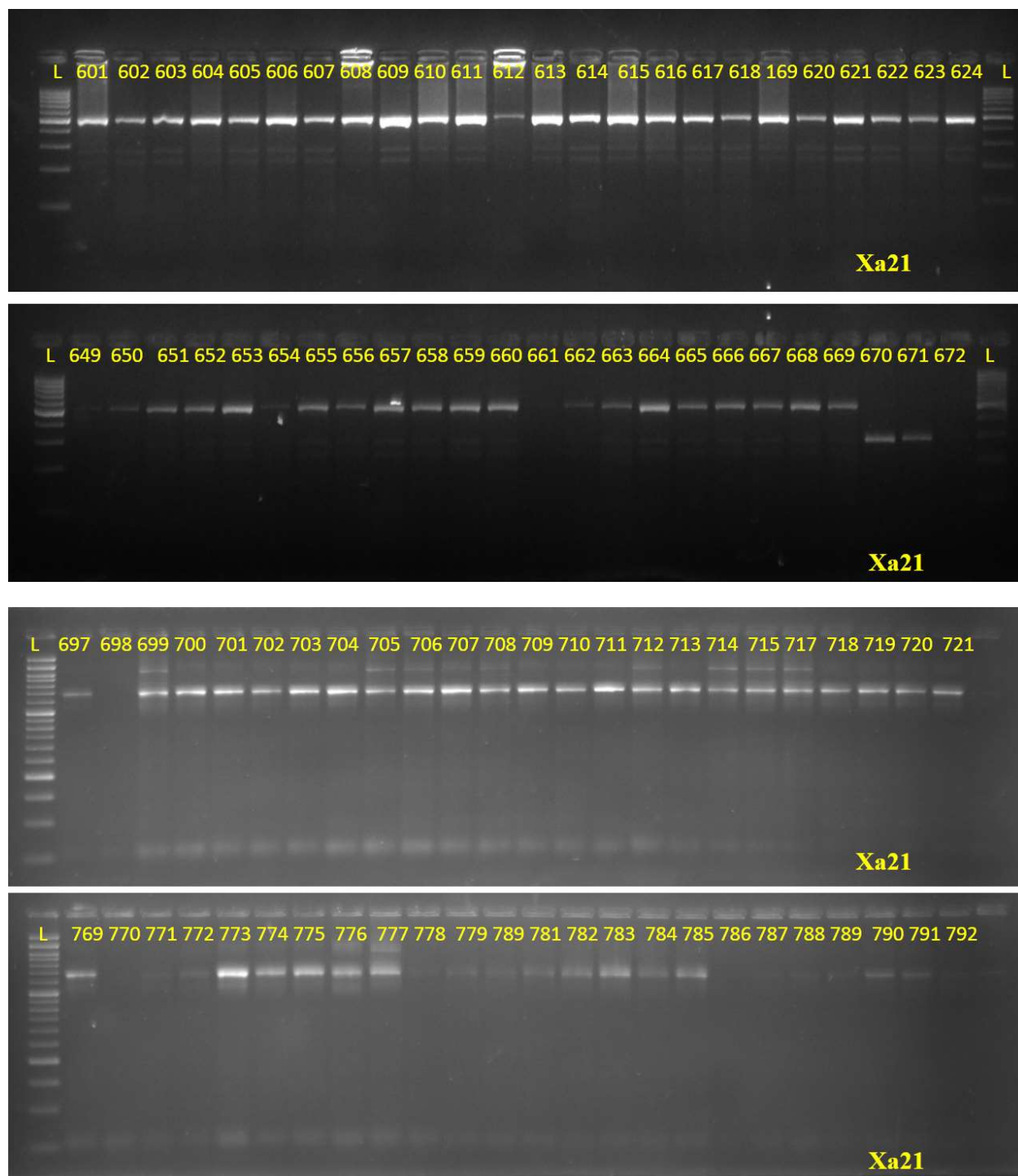












Supplementary figure S7. Molecular screening of BC3F2 progenies in rice variety, Ranidhan background for submergence tolerance and bacterial blight resistance.