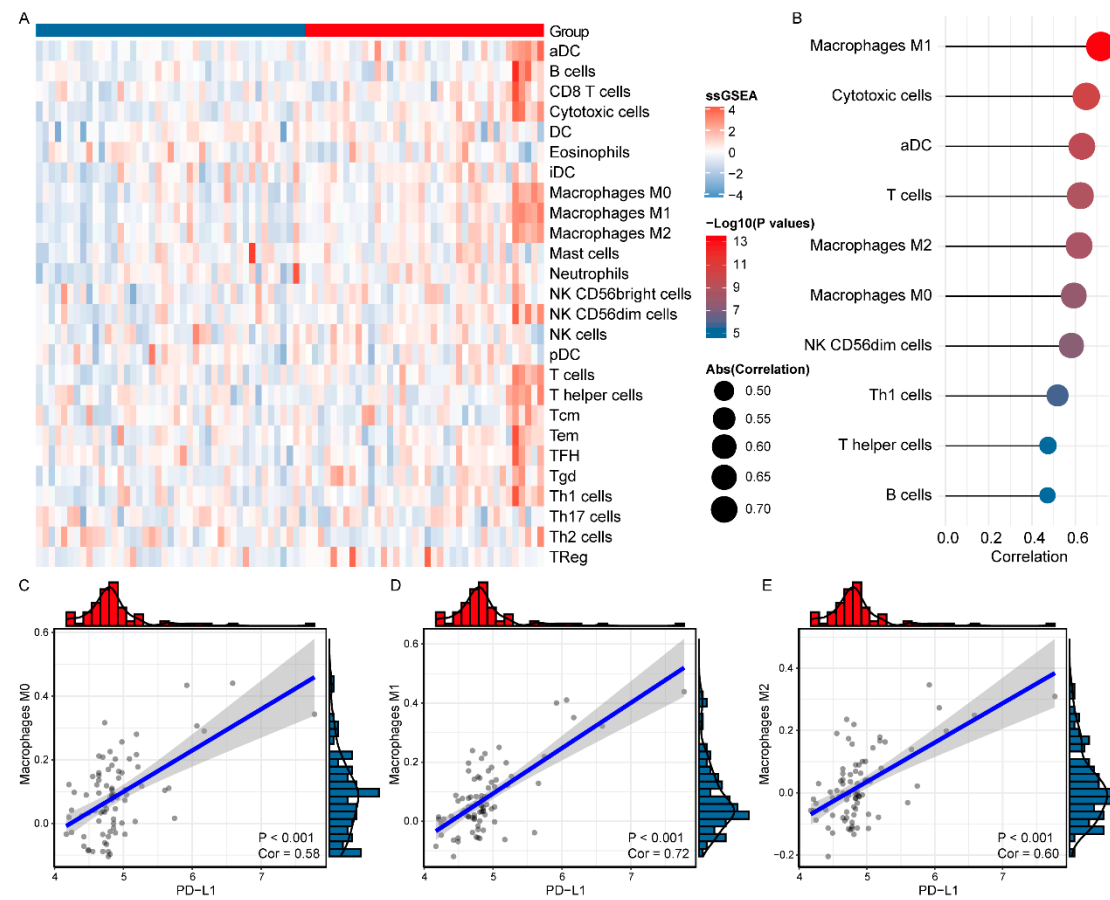
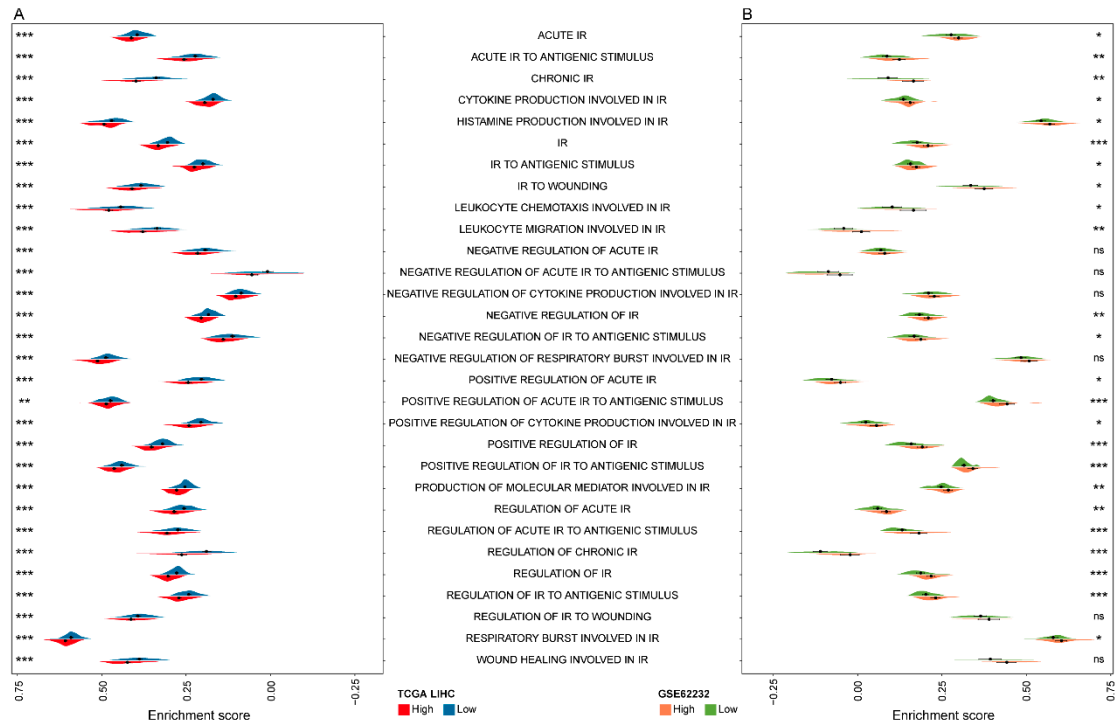


## Supplementary Figures



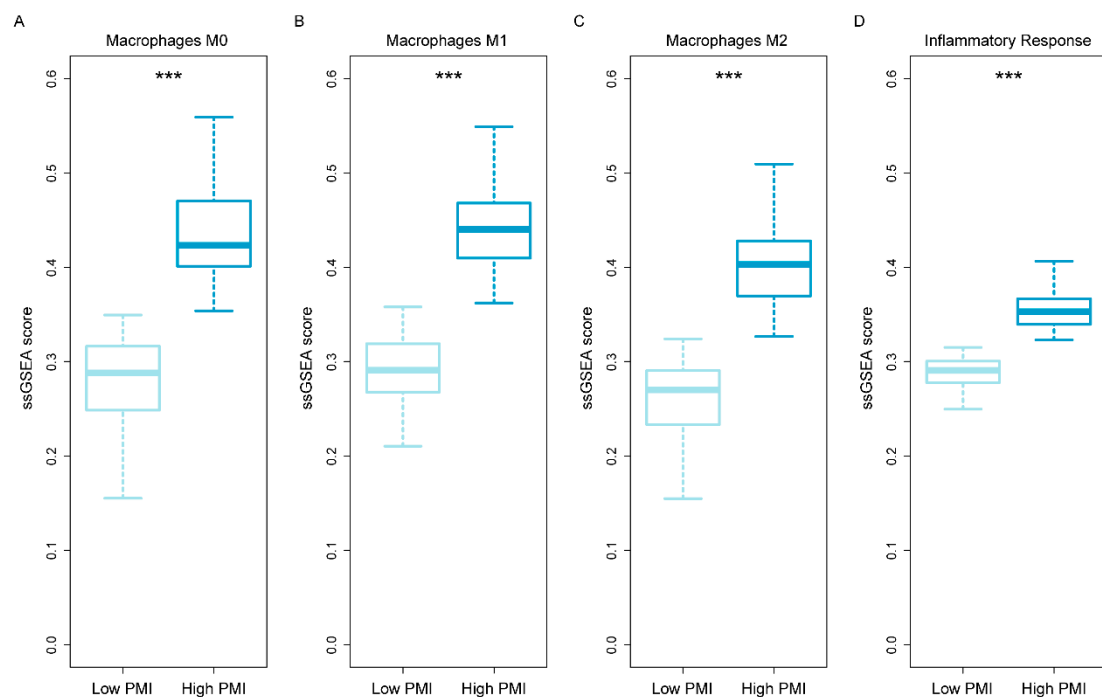
**Figure S1. Association of the expression level of PD-L1 with the infiltration level of immune cell subpopulations in the GSE62232 validation cohort.**

(A) The immune cell profiling of microenvironment in GSE62232. (B) The correlation of the expression level of PD-L1 with infiltration level of immune cells. (C-E) PD-L1 and macrophages (M0, M1 and M2) were associated positively, respectively.



**Figure S2. The different inflammatory responses between PD-L1<sup>High</sup> and PD-L1<sup>Low</sup> subgroups.**

(A-B) The differences in the activity of inflammatory response (IR) processes between the PD-L1<sup>High</sup> and PD-L1<sup>Low</sup> subgroups from the TCGA LIHC and GSE62232 validation cohorts, respectively. The asterisk character represent the statistical significance of difference: ns,  $p > 0.05$ ; \* $p < 0.05$ ; \*\* $p < 0.01$ ; \*\*\* $p < 0.001$ .



**Figure S3. Differential levels of TAMs infiltration and inflammatory response**

**activity between PMI<sup>High</sup> and PMI<sup>Low</sup> subgroups.**

**(A-D)** The differences in macrophages (M0, M1 and M2) infiltration and inflammatory response activity between the PMI<sup>High</sup> and PMI<sup>Low</sup> subgroups, respectively. The asterisk character represent the statistical significance of difference: ns,  $p > 0.05$ ; \* $p < 0.05$ ; \*\* $p < 0.01$ ; \*\*\* $p < 0.001$ .