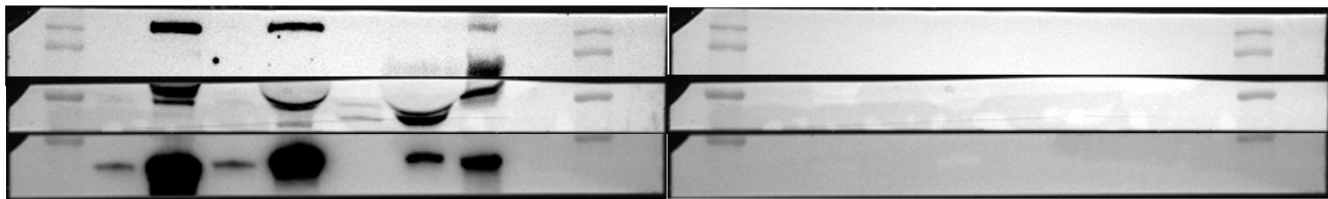


Koenen et al., 2022 - Original western blot images

Figure 1E*



* Membrane was physically cut and developed separately by experimenter (left: ECL, right: light)

Figure 4F: actin

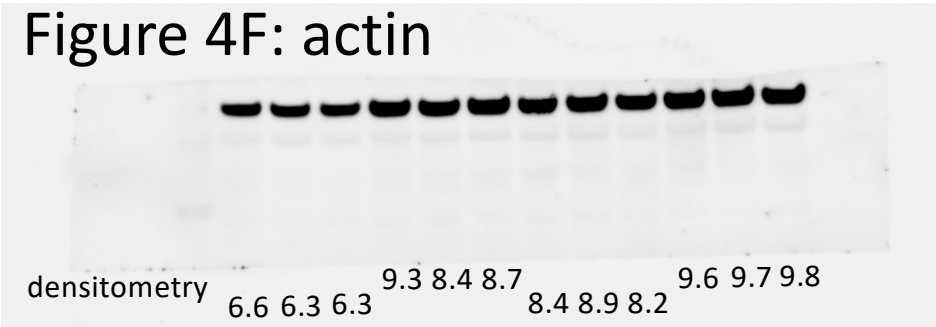


Figure 4F: GFAP

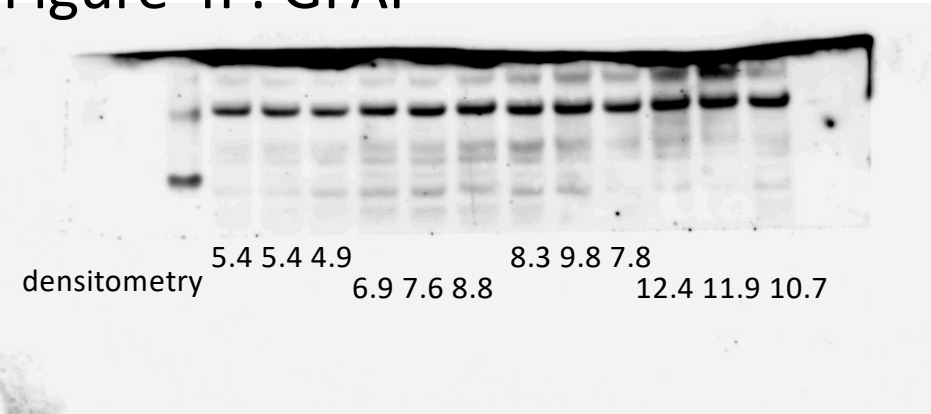
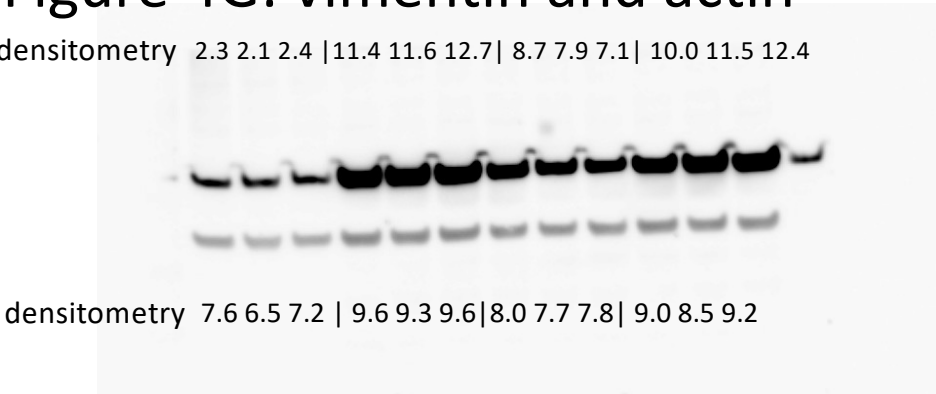


Figure 4G: vimentin and actin**



** Membrane was developed with cocktail of anti-vimentin and anti-actin (top signal: vimentin, lower signal: actin)

Figure 1A: NTA analysis of C-EV

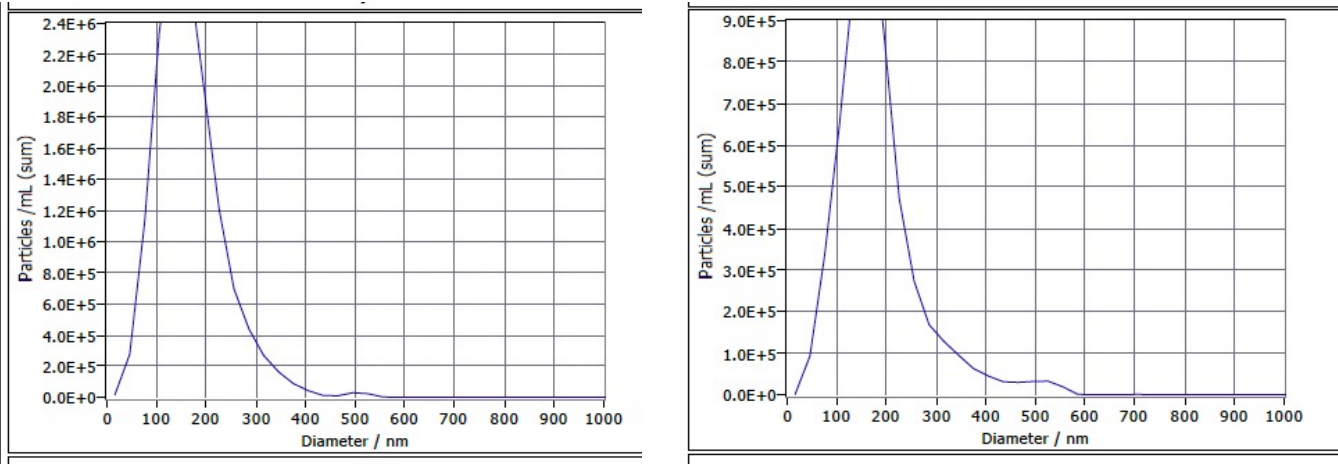


Figure 1A: NTA analysis of FA-EV

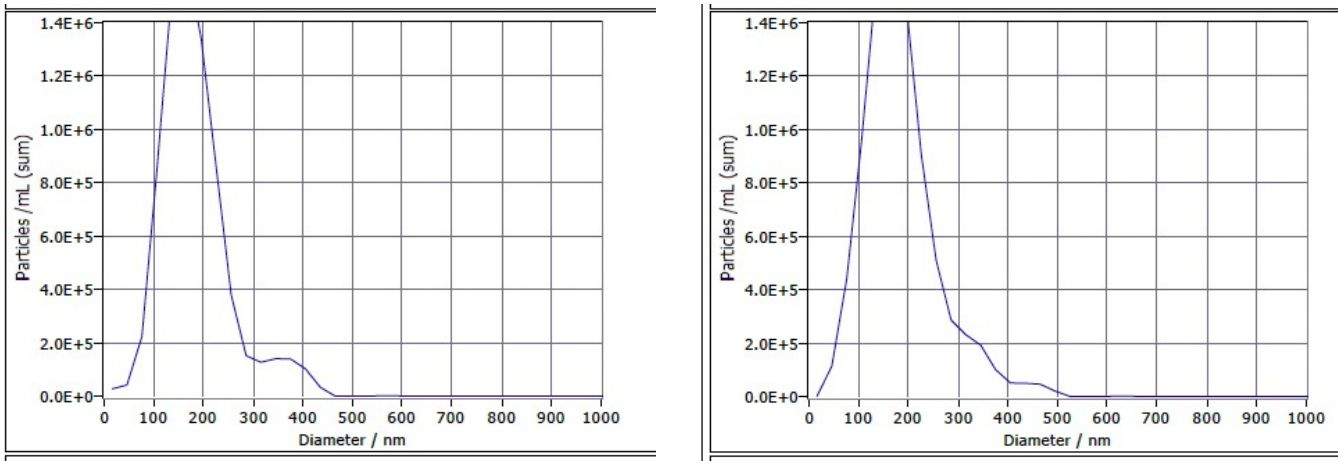


Figure 1B: Electron microscopy of C-EV

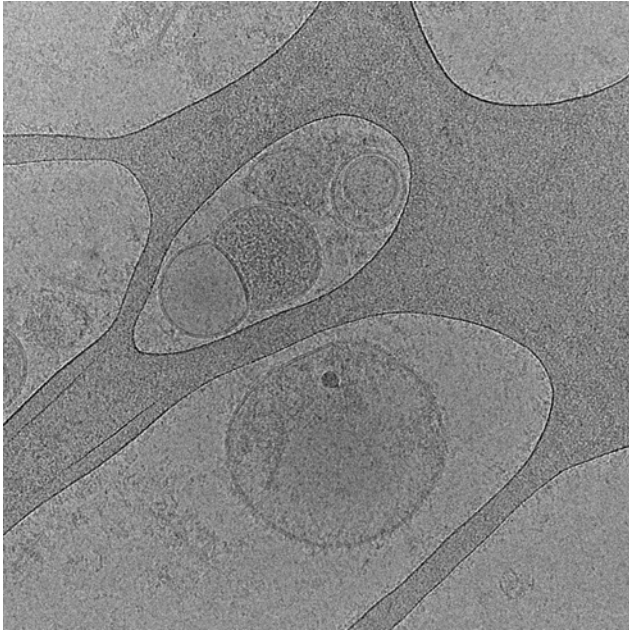


Figure 1B: Electron microscopy of FA-EV

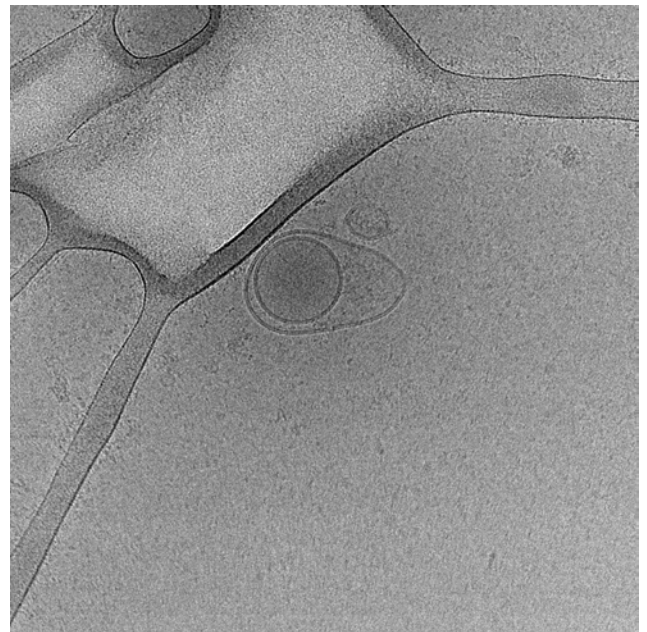
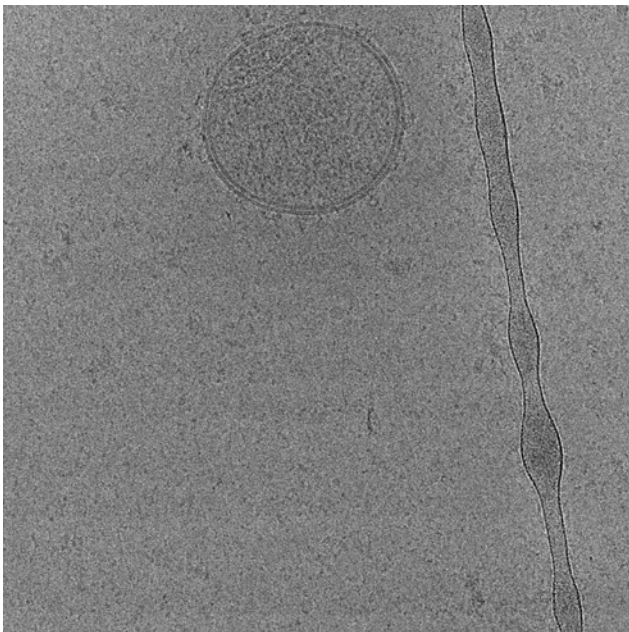


Figure 4A: actin-staining and DAPI

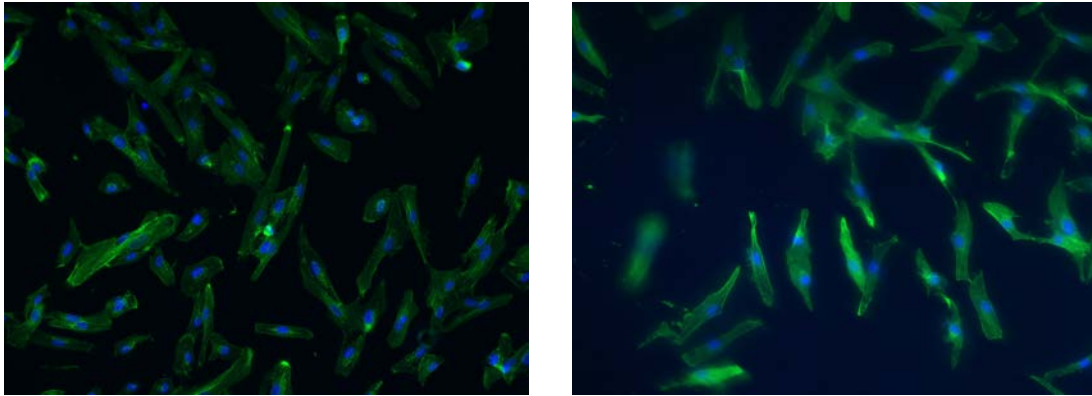


Figure 4B: actin-staining and DAPI

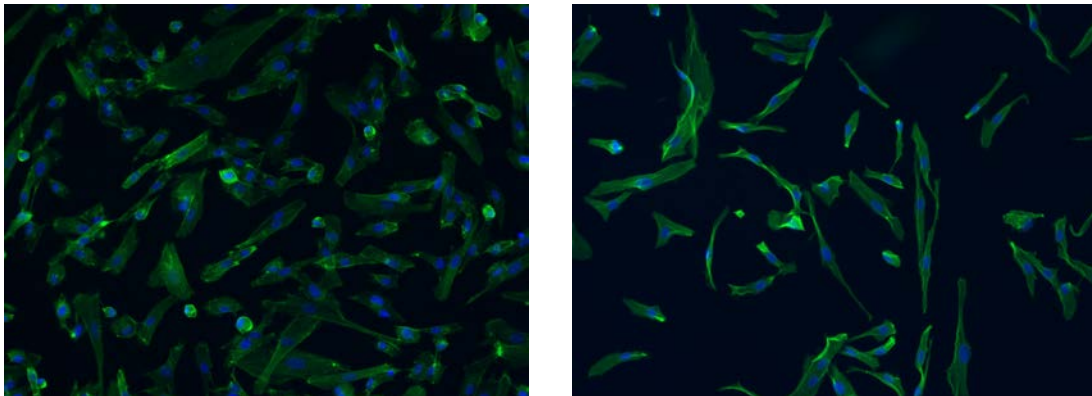


Figure 4C: actin-staining and DAPI

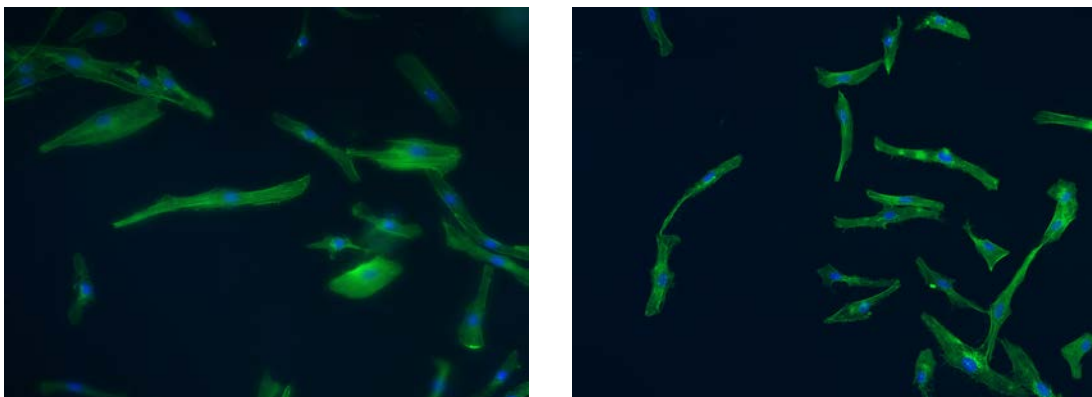


Figure 5A: Collagen, actin and DAPI

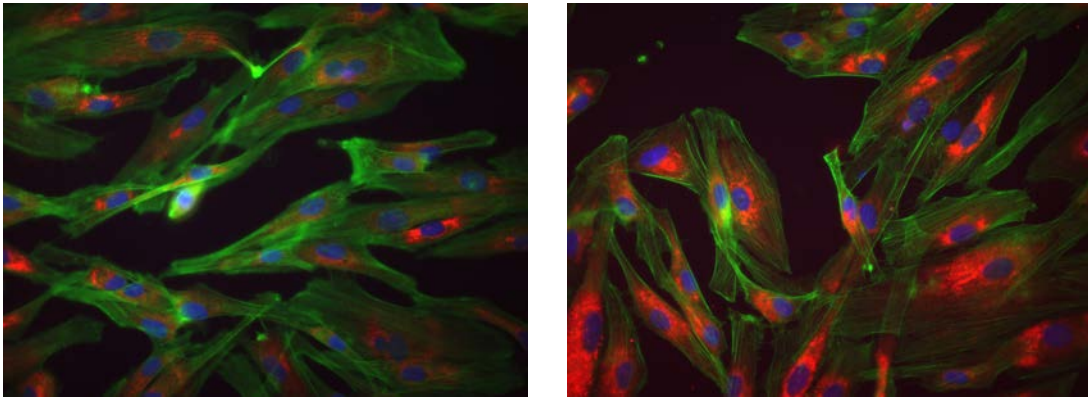


Figure 5B: Collagen, actin and DAPI

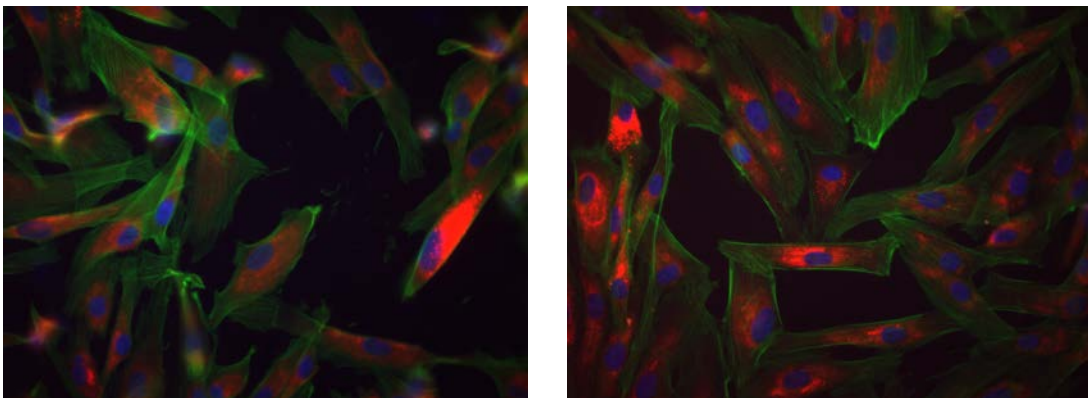


Figure 5C: Collagen, actin and DAPI

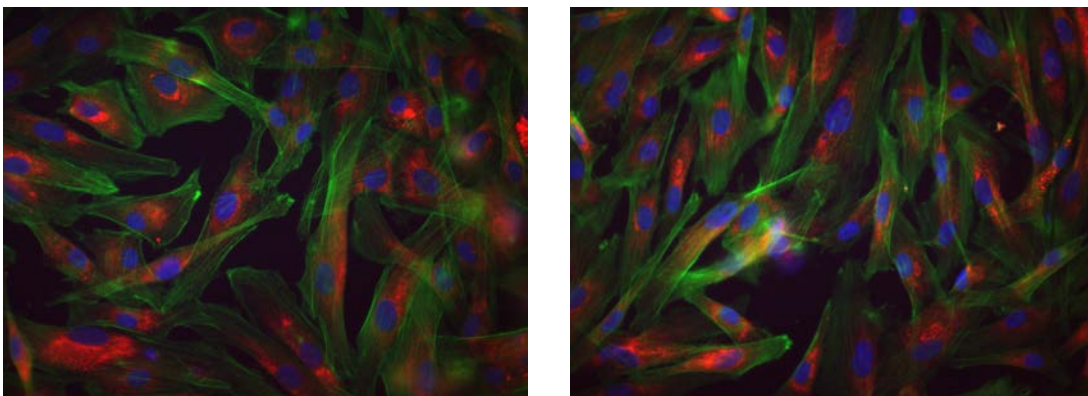


Figure A1: HepG2 Oil Red O

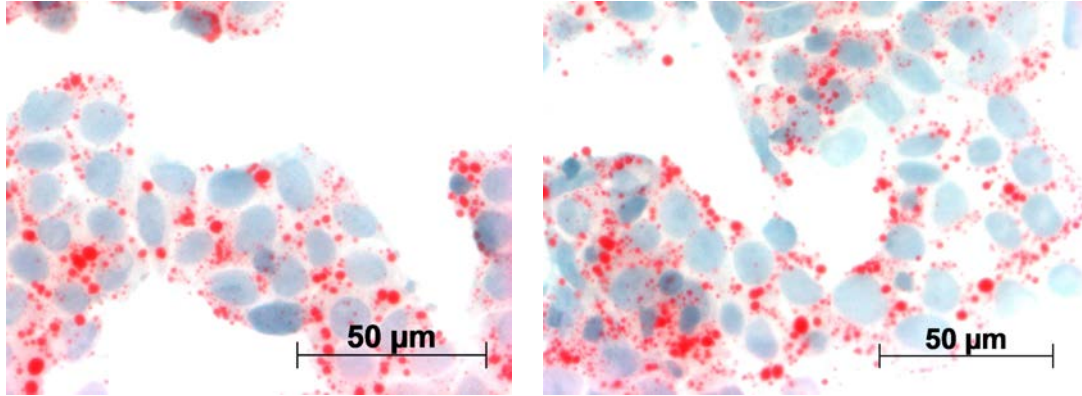


Figure A1: HepG2+FA Oil Red O

