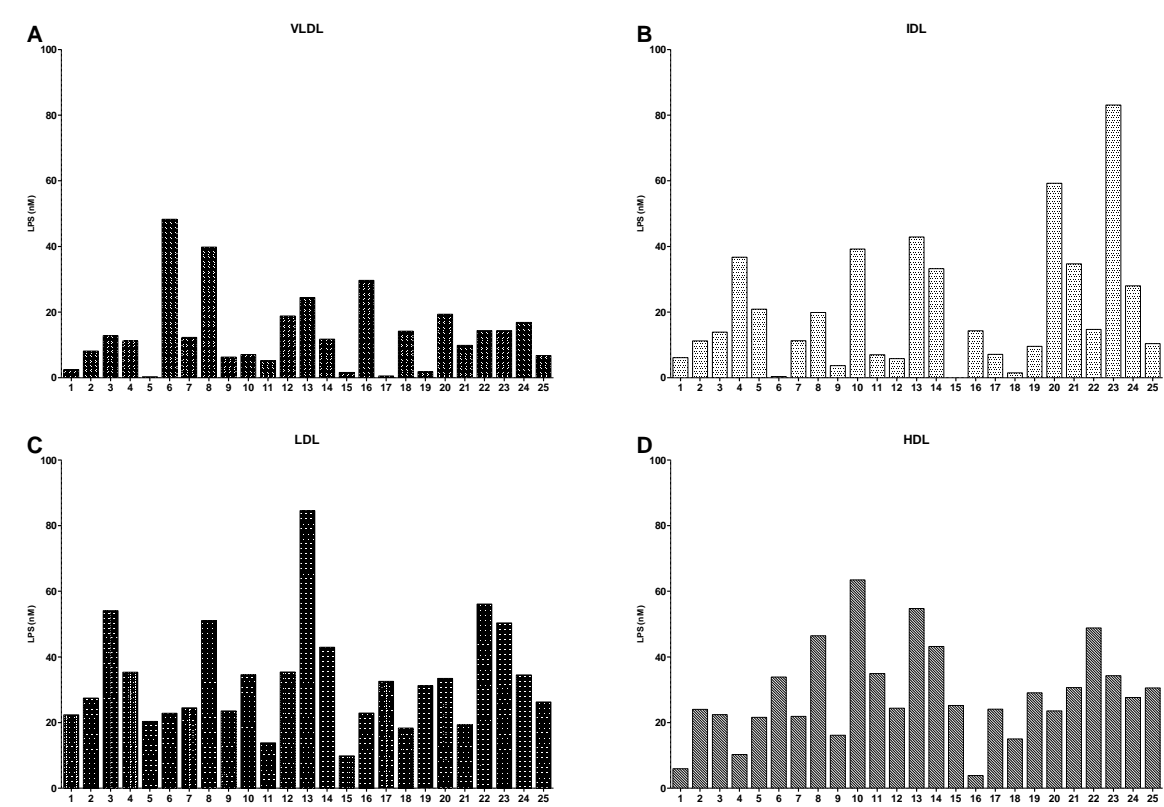
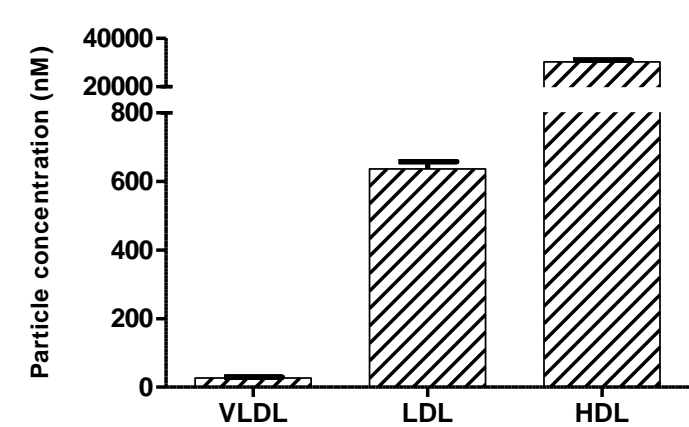


Supplemental figure S1



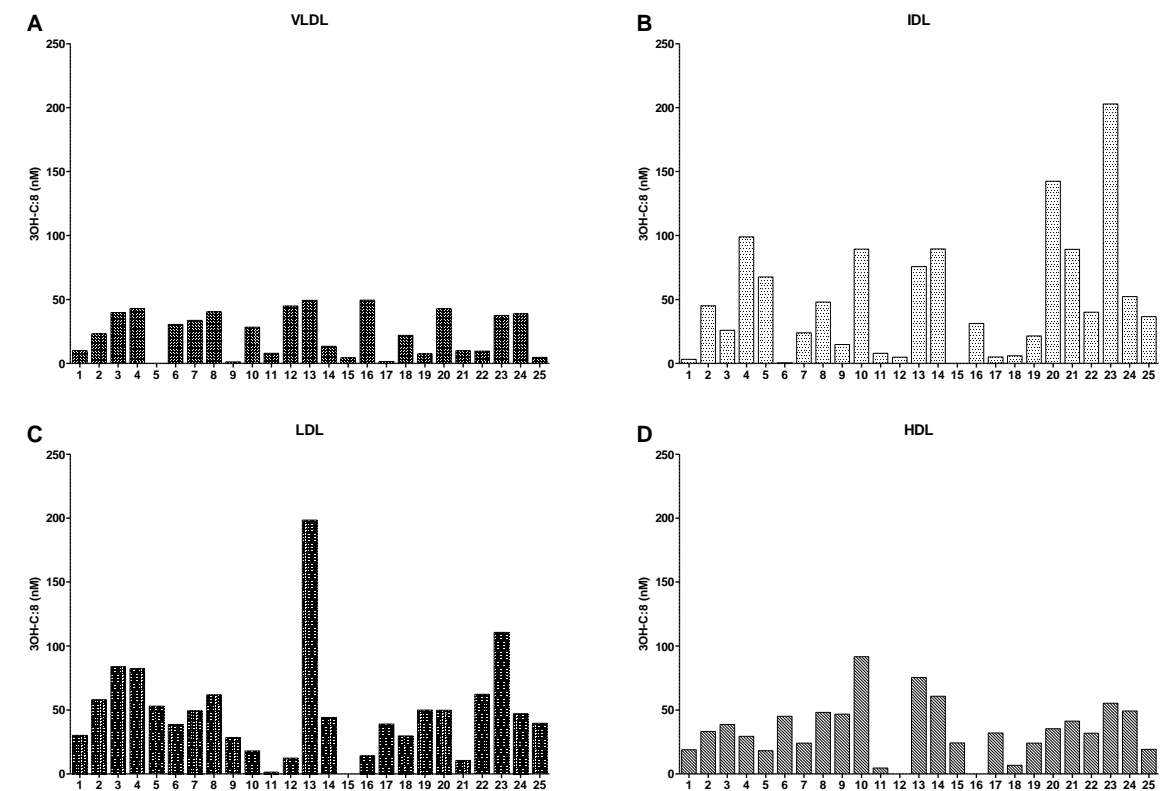
**Supplemental figure S1:** Individual LPS concentrations (nM) in VLDL (A), IDL (B), LDL (C) and HDL (D) fractions of all study subjects.

Supplemental figure S2



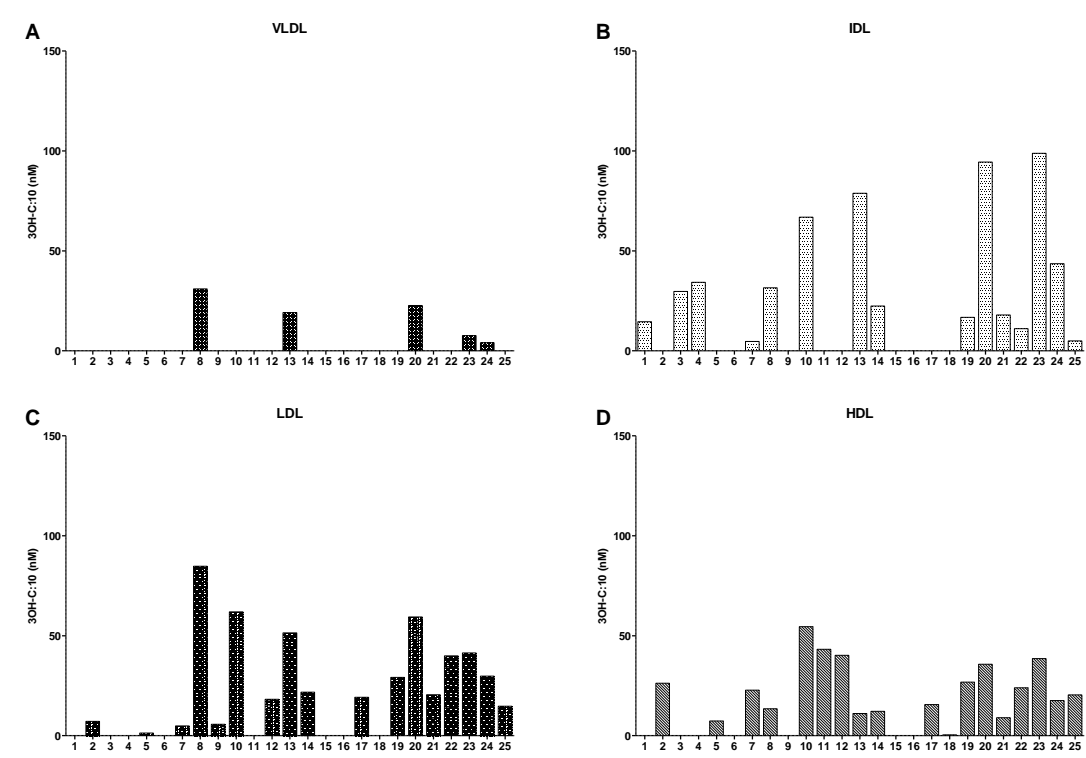
**Supplemental figure S2:** Mean concentration (nM) of VLDL, LDL and HDL particles in the study group.

Supplemental figure S3



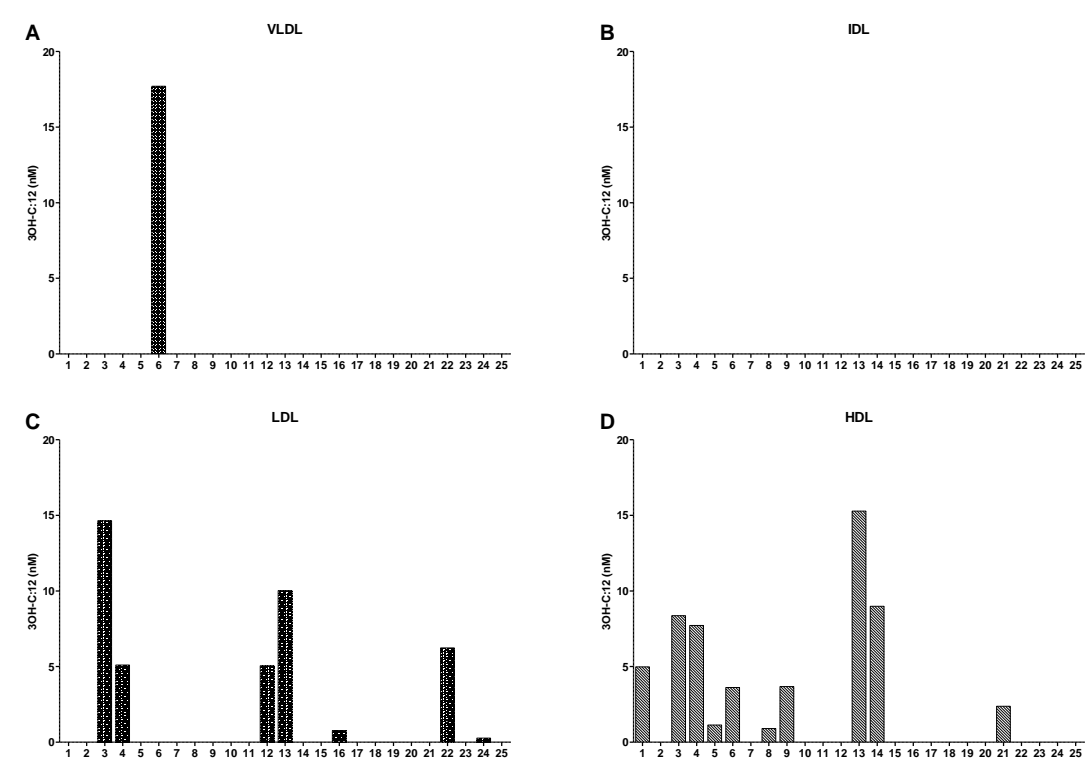
**Supplemental figure S3:** Individual concentrations (nM) of 3OH-C:8 fatty acid in VLDL (A), IDL (B), LDL (C) and HDL (D) fractions of all study subjects.

Supplemental figure S4



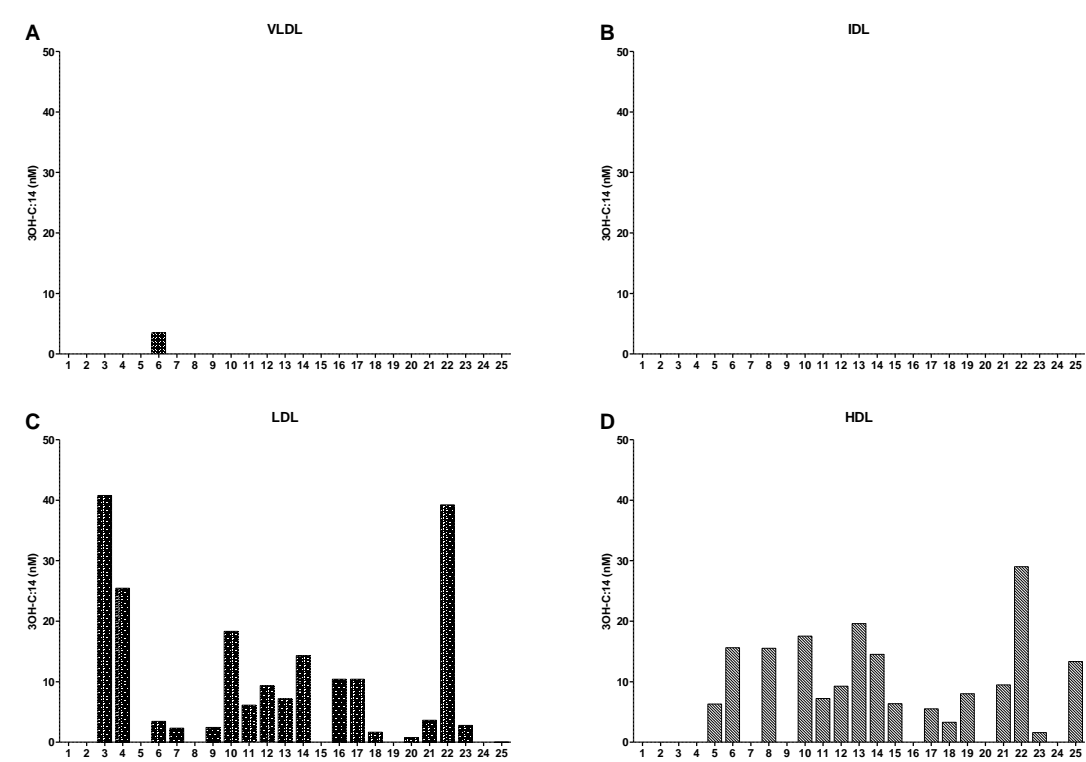
**Supplemental figure S4:** Individual concentrations (nM) of 3OH-C:10 fatty acid in VLDL (A), IDL (B), LDL (C) and HDL (D) fractions of all study subjects.

Supplemental figure S5



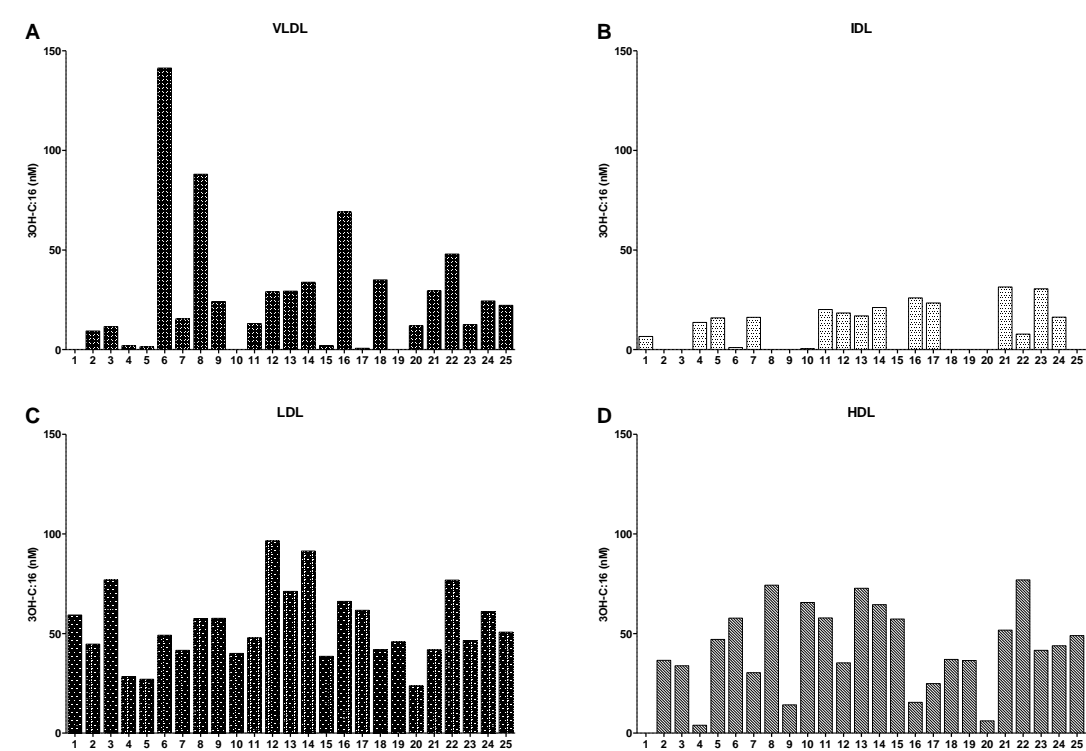
**Supplemental figure S5:** Individual concentrations (nM) of 3OH-C:12 fatty acid in VLDL (A), IDL (B), LDL (C) and HDL (D) fractions of all study subjects.

Supplemental figure S6



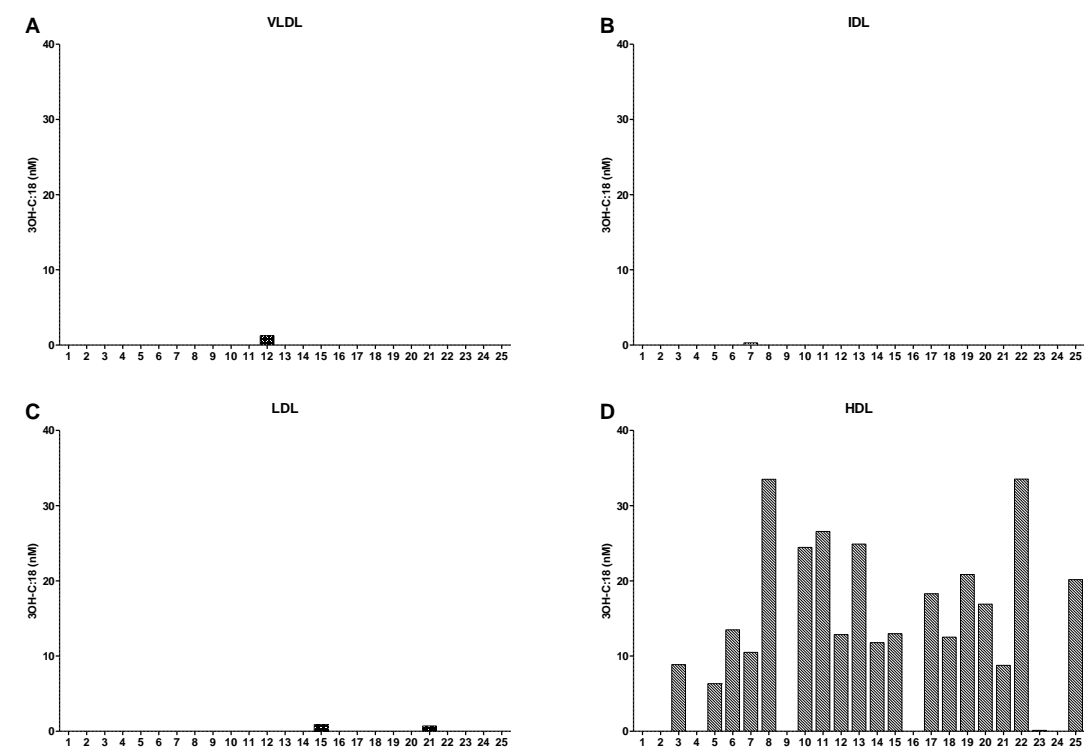
**Supplemental figure S6:** Individual concentrations (nM) of 3OH-C:14 fatty acid in VLDL (A), IDL (B), LDL (C) and HDL (D) fractions of all study subjects.

Supplemental figure S7



**Supplemental figure S7:** Individual concentrations (nM) of 3OH-C:16 fatty acid in VLDL (A), IDL (B), LDL (C) and HDL (D) fractions of all study subjects.

Supplemental figure S8



**Supplemental figure S8:** Individual concentrations (nM) of 3OH-C:18 fatty acid in VLDL (A), IDL (B), LDL (C) and HDL (D) fractions of all study subjects.