

Supplementary material

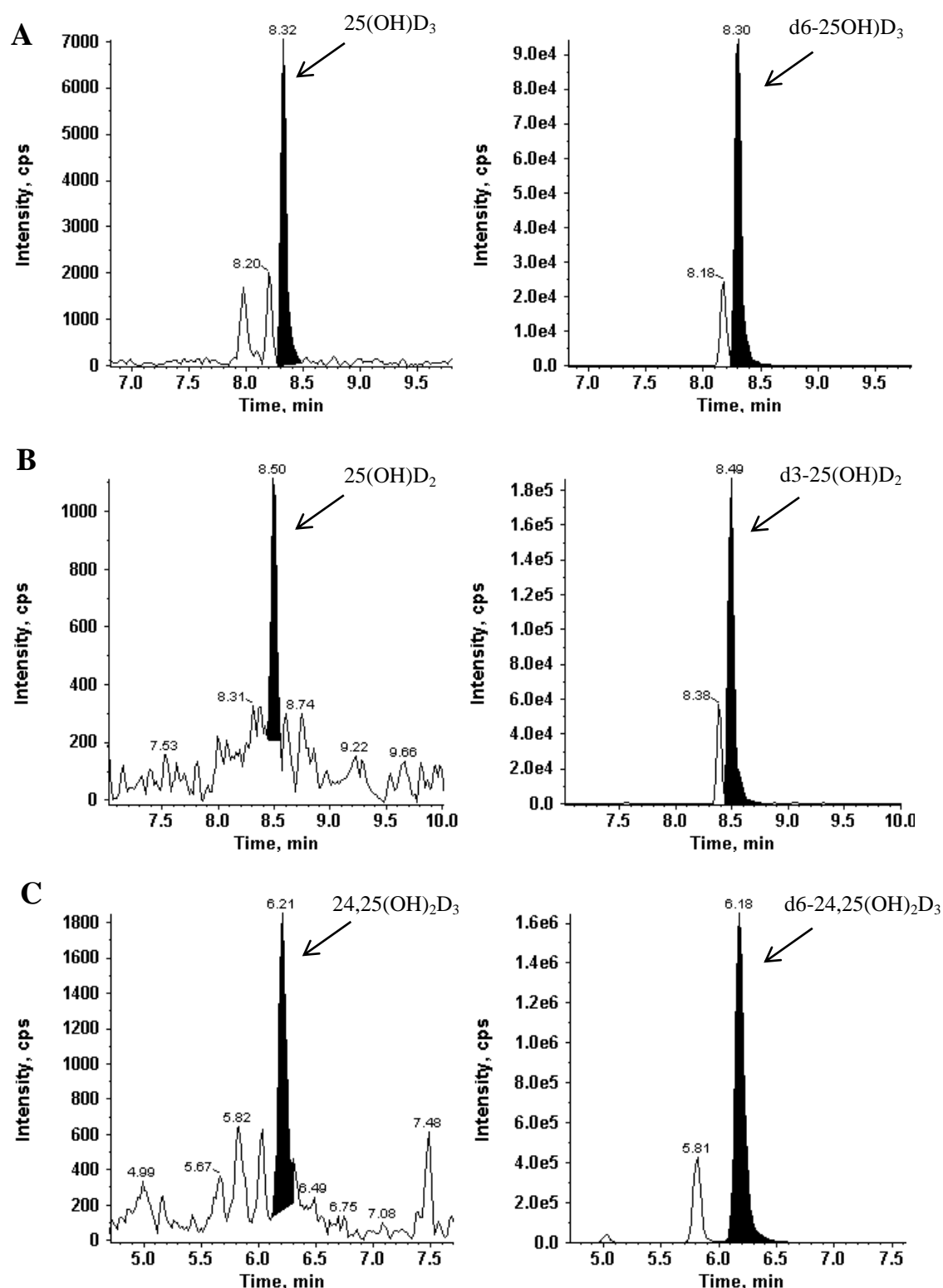


Figure S1. Representative chromatograms of (A) $25(\text{OH})\text{D}_3$ (2.6 nmol/L), (B) $25(\text{OH})\text{D}_2$ (0.9 nmol/L) and (C) $24,25(\text{OH})_2\text{D}_3$ (0.07 nmol/L) (on the left side), in a native liquor sample and their deuterated internal standards ($\text{d6-}25(\text{OH})\text{D}_3$, $\text{d3-}25(\text{OH})\text{D}_2$ and $\text{d6-}24,25(\text{OH})_2\text{D}_3$ each with 150 nmol/L) (on the right side) obtained by LC-MS/MS in multiple reaction monitoring (MRM) mode. The black coloured peak represents the target analyte in the chromatograms. cps, counts per second