



Electronic Supplementary Information

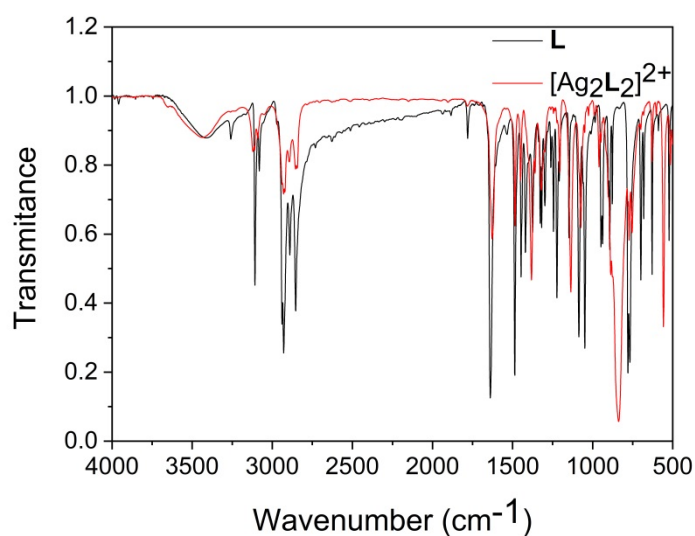


Figure S1. IR spectra of L and $[Ag_2L_2]^{2+}$ in KBr.

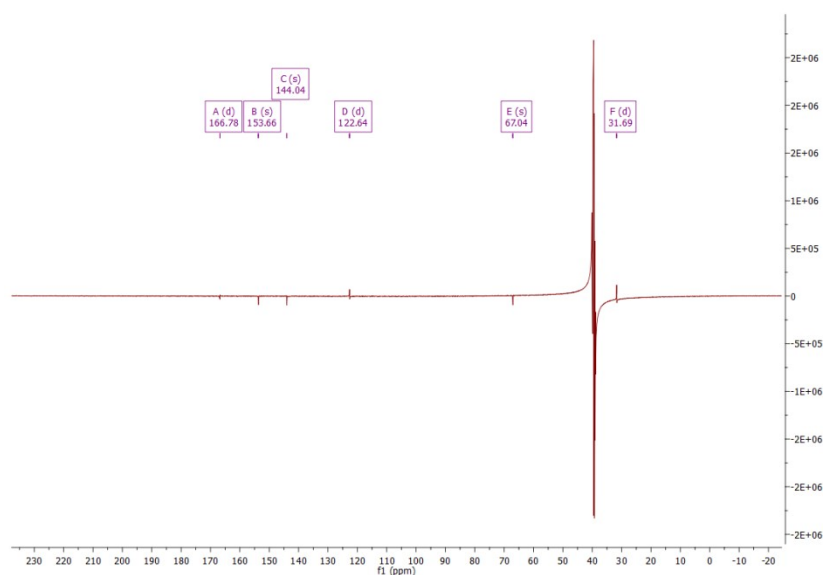


Figure S2. ^{13}C NMR spectra for ligand L measured in $(CD_3)_2SO$.

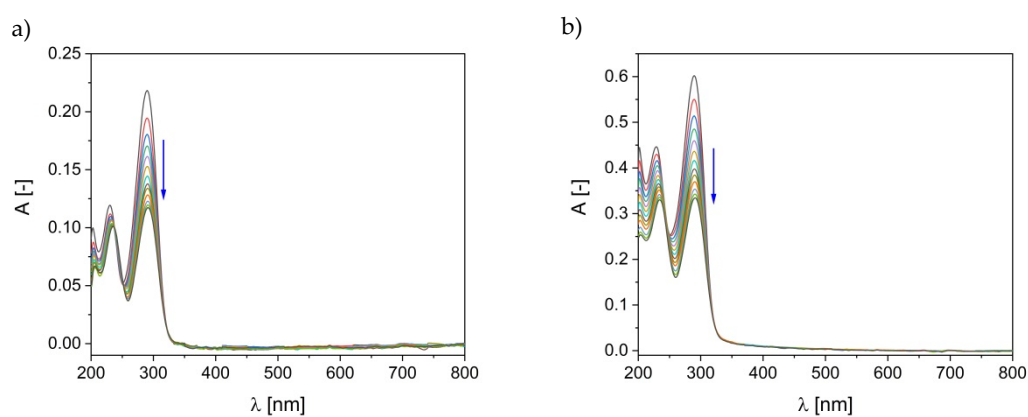


Figure S3. Stability tests of L (a) and $[Ag_2L_2]^{2+}$ (b) (20 μ M) in PBS buffer (pH = 7.4) with 1% MeCN content. The tests were carried out from 0 to 120 minutes.

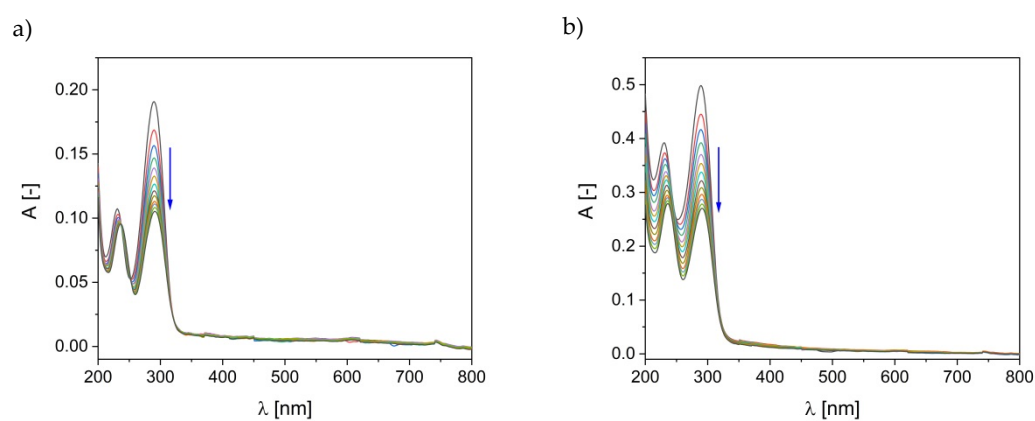


Figure S4. Stability tests of L (a) and $[Ag_2L_2]^{2+}$ (b) (20 μ M) in Tris-HCl buffer (pH = 7.2) with 1% MeCN content. The tests were carried out from 0 to 120 minutes.

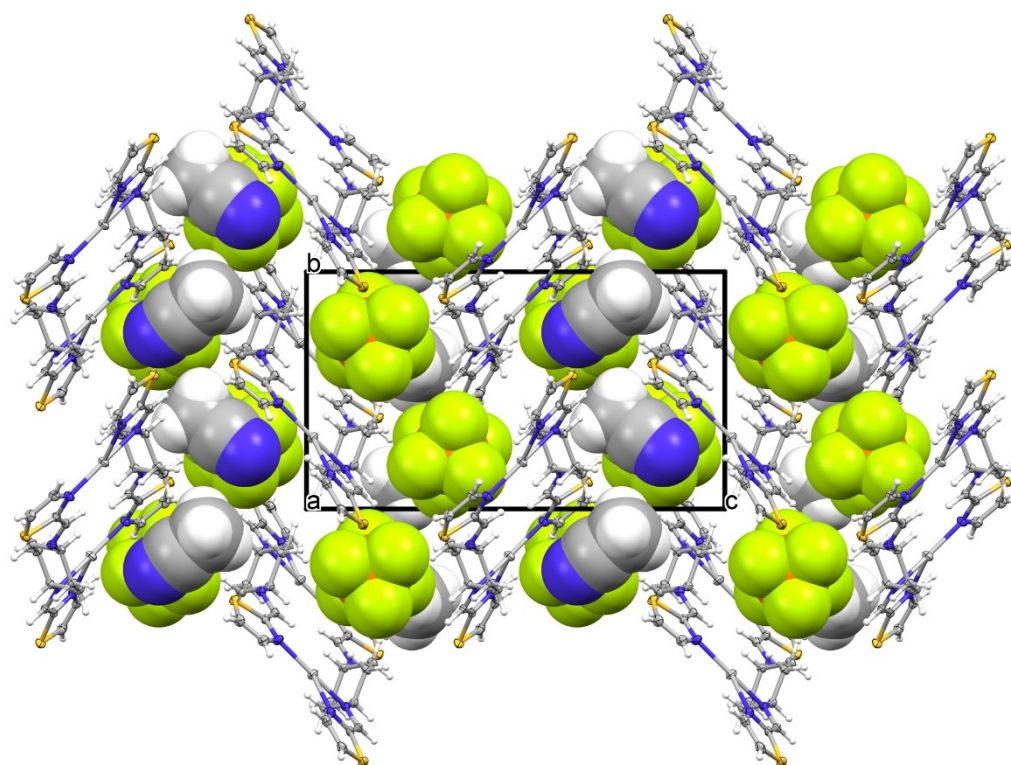
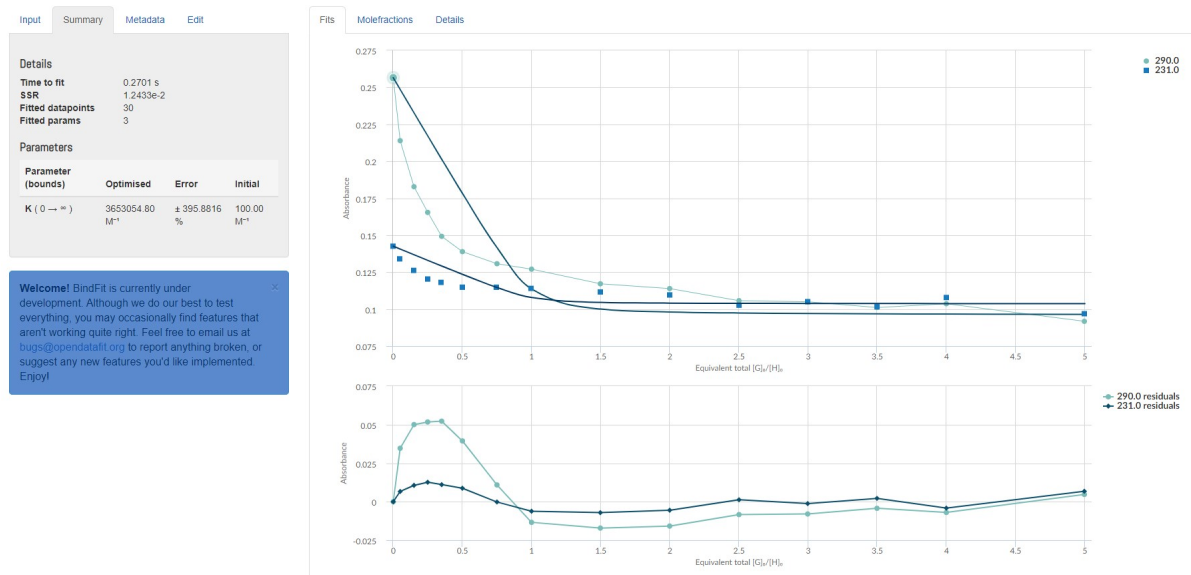


Figure S5. A crystal packing as seen along x-direction. The anions and solvent molecules are shown in the van der Waals radii representation.

a)



b)

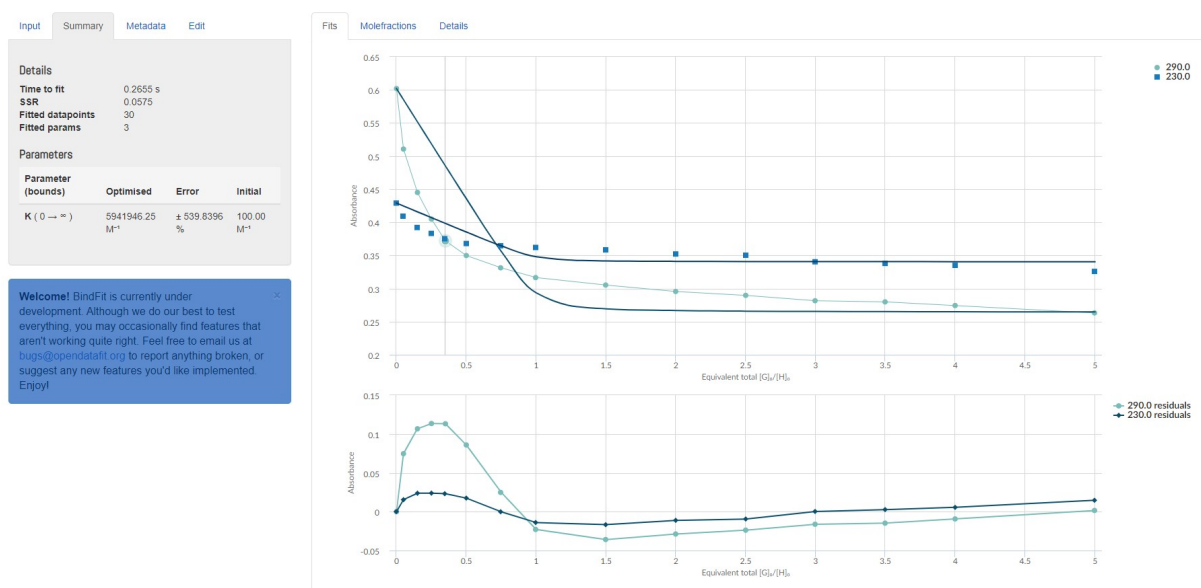


Figure S6. Bindfit fitting of UV-Vis titrations of **L** (a) and $[Ag_2L_2]^{2+}$ (b) generated using website supramolecular.org.