



Supplementary Materials for

Widely Targeted HPLC-MS/MS Metabolomics Analysis Reveals Natural Metabolic Insights in Insects

Zhaoxin Li ^{1,2,3}, Yunlong Cheng ¹, Jinxin Chen ¹, Weijun Xu ¹, Wentao Ma ¹, Sheng Li ^{1,2,3}, and Erxia Du ^{1,2,3,*}

Supplementary materials:

Figure. S1 to S6

Table S1

Figures

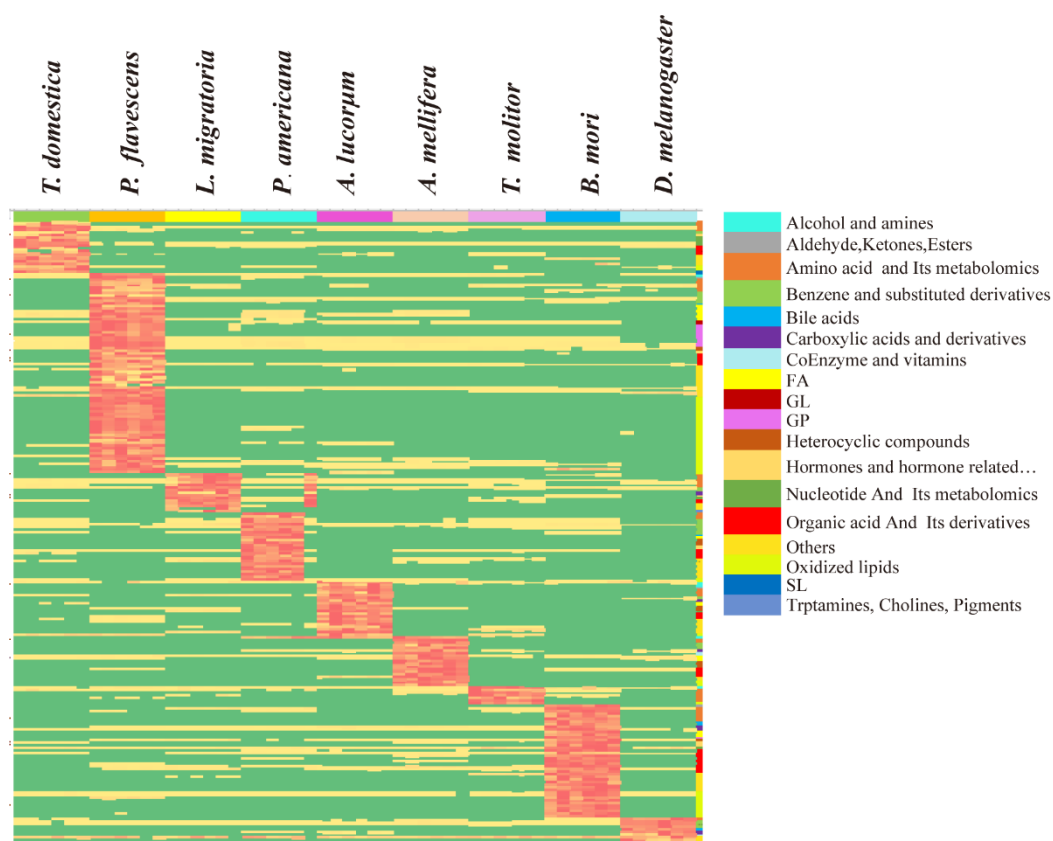


Figure S1. The species-specific differential metabolites among the species. The differential metabolites of one species was compared to each of the other 8 species to obtain 8 groups. The intersection among the 8 groups were selected to generate the specific metabolites expression pattern in one species.

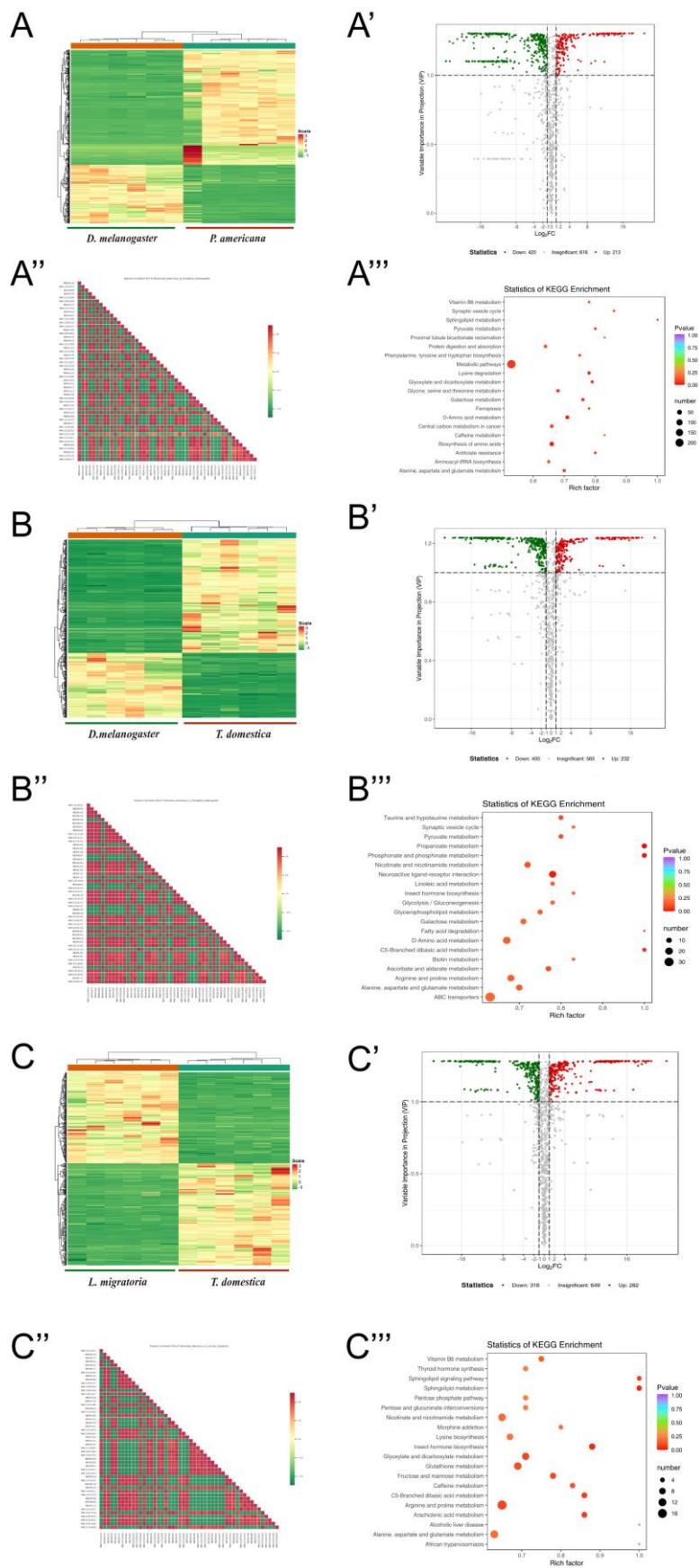


Figure S2. Heatmap, volcano plot, Pearson correlation plot, and KEGG enrichment of the metabolites between *D. melanogaster* vs *P. americana* (A-A'''), *D. melanogaster* vs *T. domestica* (B-B'''), *L. migratoria* vs *T. domestica* (C-C''').

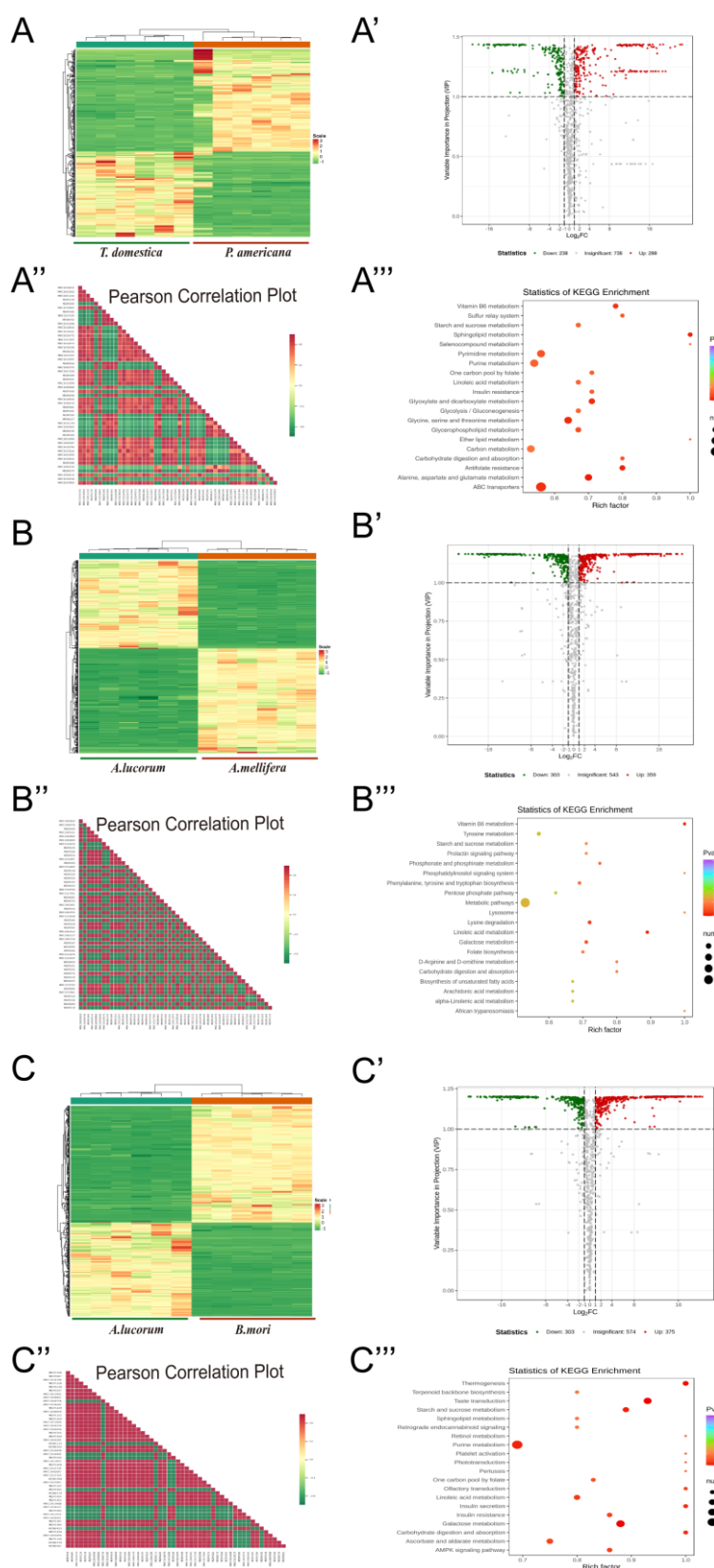


Figure S3. Heatmap, volcano plot, Pearson correlation plot, and KEGG enrichment of the metabolites between *T. domestica* vs *P. americana* (A-A'''), *A. lucorum* vs *A. mellifera* (B-B'''), *A. lucorum* vs *B. mori* (C-C''').

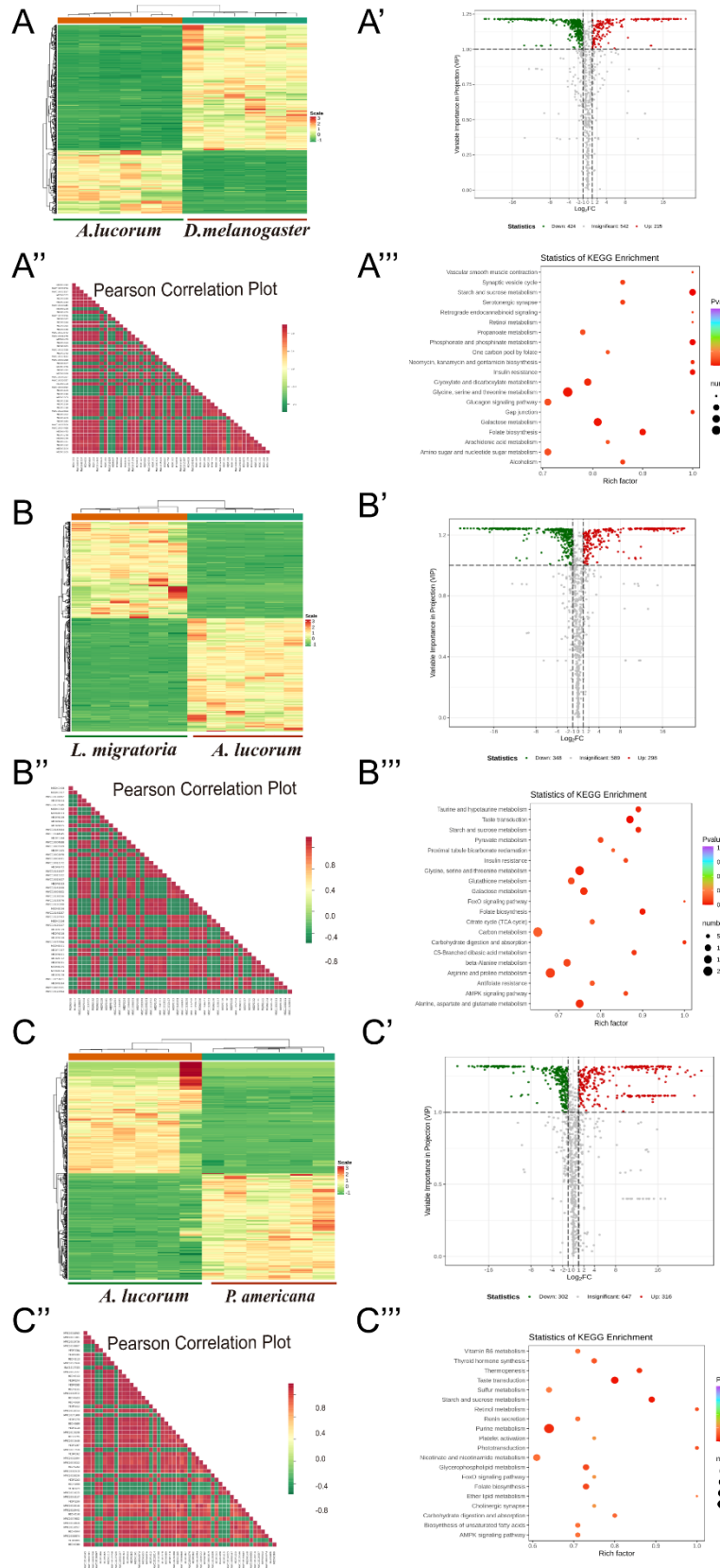


Figure S4. Heatmap, volcano plot, Pearson correlation plot, and KEGG enrichment of the metabolites between *A. lucorum* vs *D. melanogaster* (A-A'''), *L. migratoria* vs *A. lucorum* (B-B'''), *A. lucorum* vs *P. americana* (C-C''').

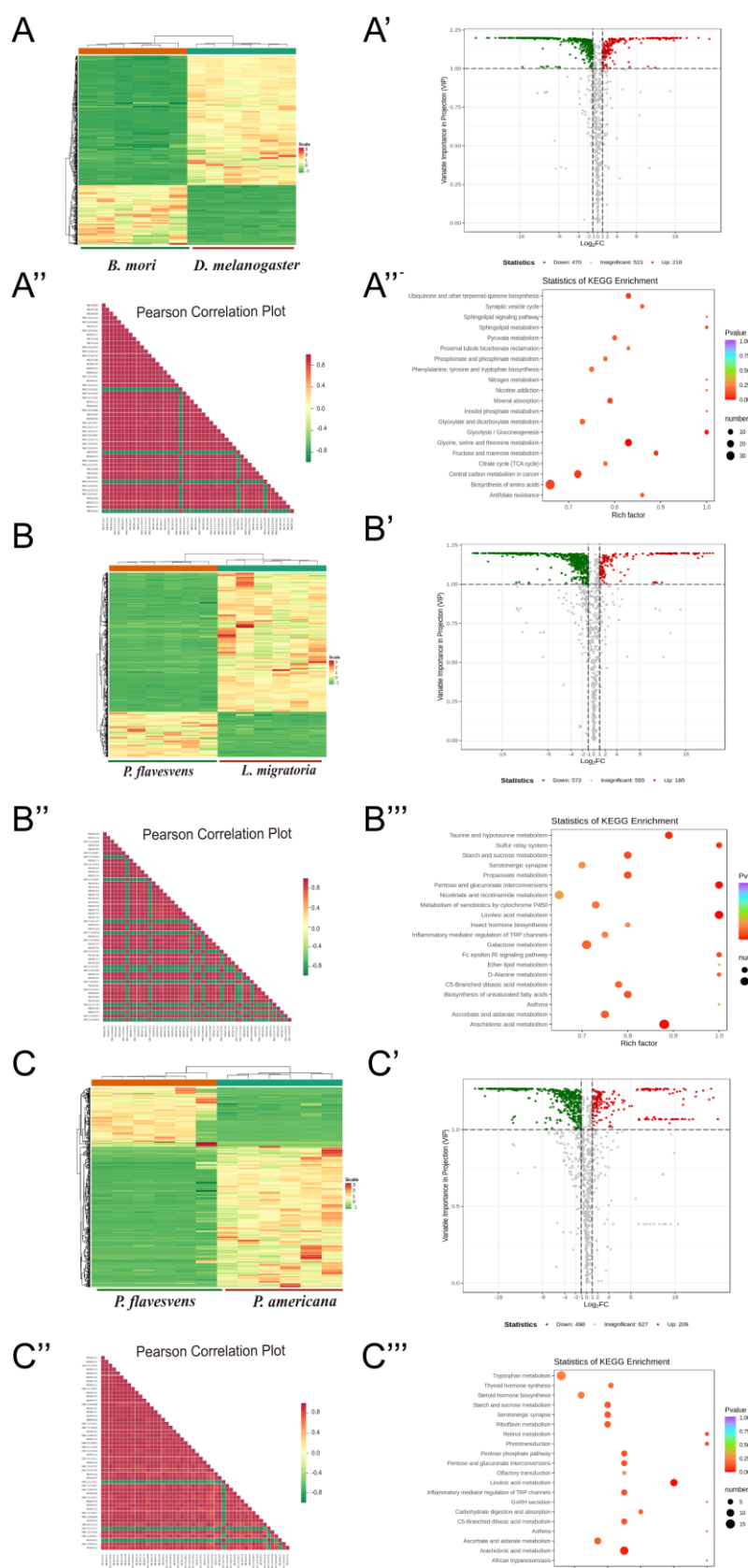


Figure S5. Heatmap, volcano plot, Pearson correlation plot, and KEGG enrichment of the metabolites between *B. mori* vs *D. melanogaster* (A-A''), *P. flavescens* vs *L. migratoria* (B-B''), *P. flavescens* vs *P. americana* (C-C'').

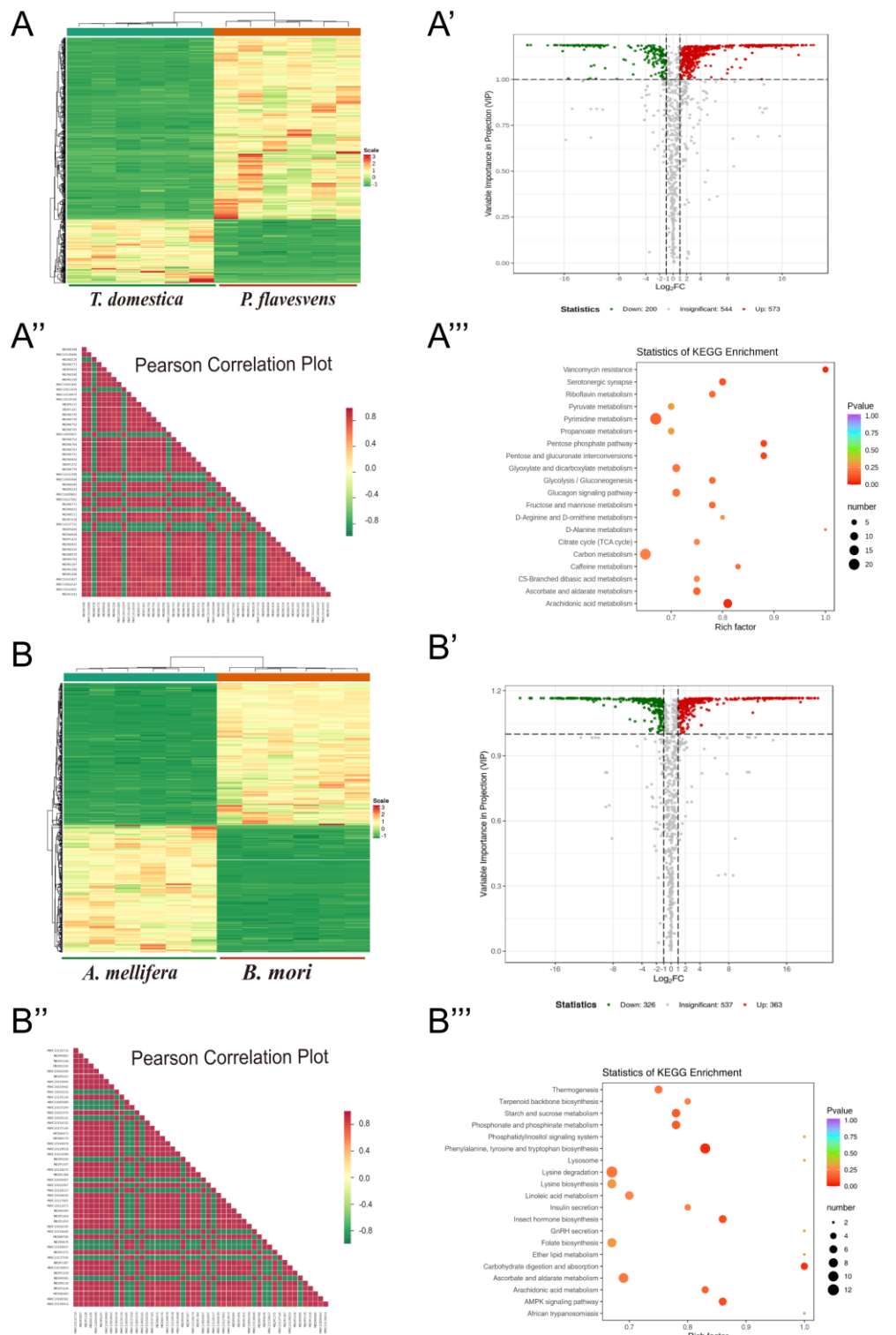


Figure S6. Heatmap, volcano plot, Pearson correlation plot, and KEGG enrichment of the metabolites between *T. domestica* vs *P. flavescens* (A-A'''), *A. mellifera* vs *B. mori* (B-B''').