

Figure S1. Representative ^1H -NMR spectra of follicular fluids from an healthy control (A) and a breast cancer patient (B).

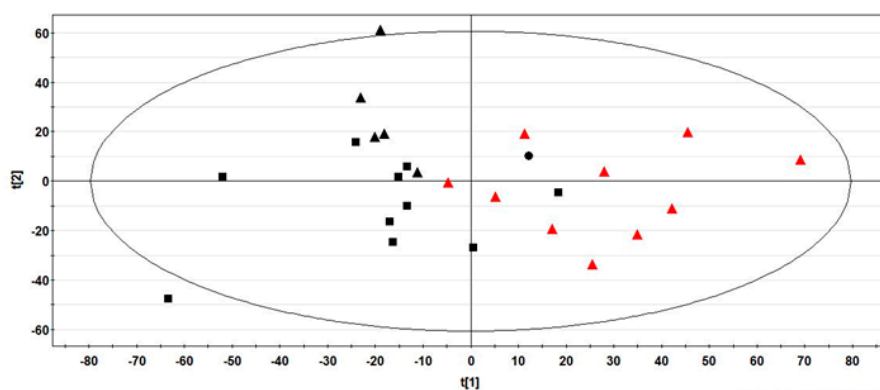


Figure S2. Partial Least Square Discriminant Analysis score plots obtained from the ^1H -NMR spectral data on FF of the 26 women examined in the study. For this two-component model the R^2X value was 0.34 and the Q^2 value was 0.19. Healthy women ($n = 10$) were compared with BC patients subdivided in two groups: without and with lymph node metastasis. Healthy controls were represented by red triangle. BC patients are shown in black with different symbols: patients with no lymph node metastasis ($n = 10$), boxes; patients with N1 ($n = 5$), and N2 lymph node metastasis ($n = 1$), triangles and dot, respectively.