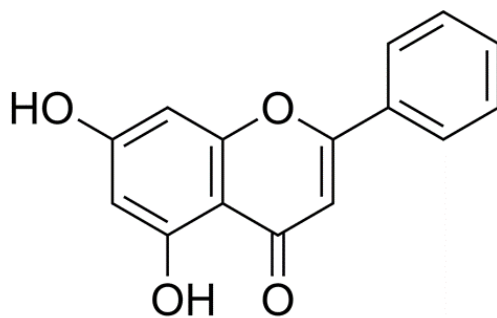
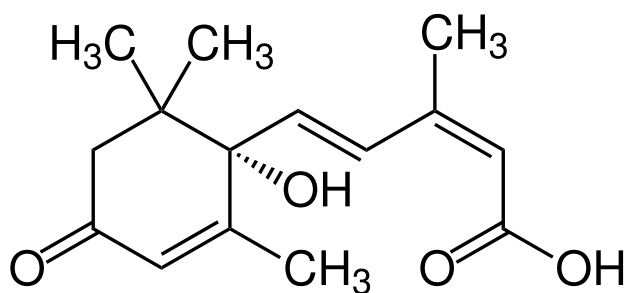


**Figure S1.** Chemical structure of (a) chrysin, (b) abscisic acid and (c) abscisic acid glucosyl ester (ABA-GE).



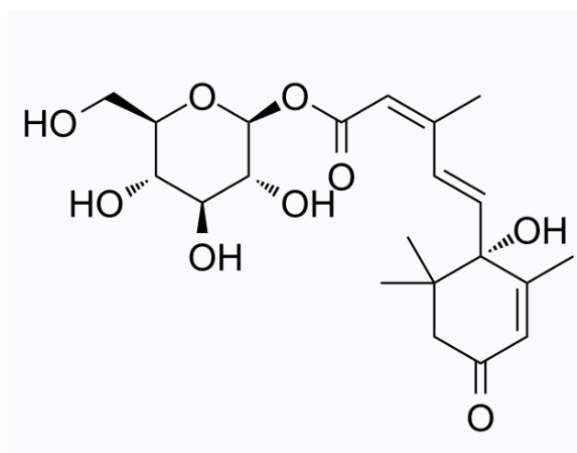
(a) Chemical structure of 5,7-dihydroxyflavone (chrysin)

Source: <https://doi.org/10.1016/j.neuint.2020.104850>



(b) Chemical structure of abscisic acid (ABA)

Source: <https://www.sigmaaldrich.com>



(c) (S)-*cis,trans*-Abscisic acid glucosyl ester (ABA-GE)

Source: <https://www.medchemexpress.com>