

Figure S1 shows the whole blot after cutting membrane at molecular weight 65 kDa, 35 kDa and 15 kDa for p53 (53 kDa), YY1 (45 kDa), Actin (42 kDa), Bax (21 kDa) and Bcl-2 (26 kDa). These represent western blot analysis shown in Fig. 1 and Fig. 2A.

Since we only added one molecular marker each time in western blot and cut the membrane to many different target bands, we failed to show the complete molecular marker in each band. Please consider our situation.

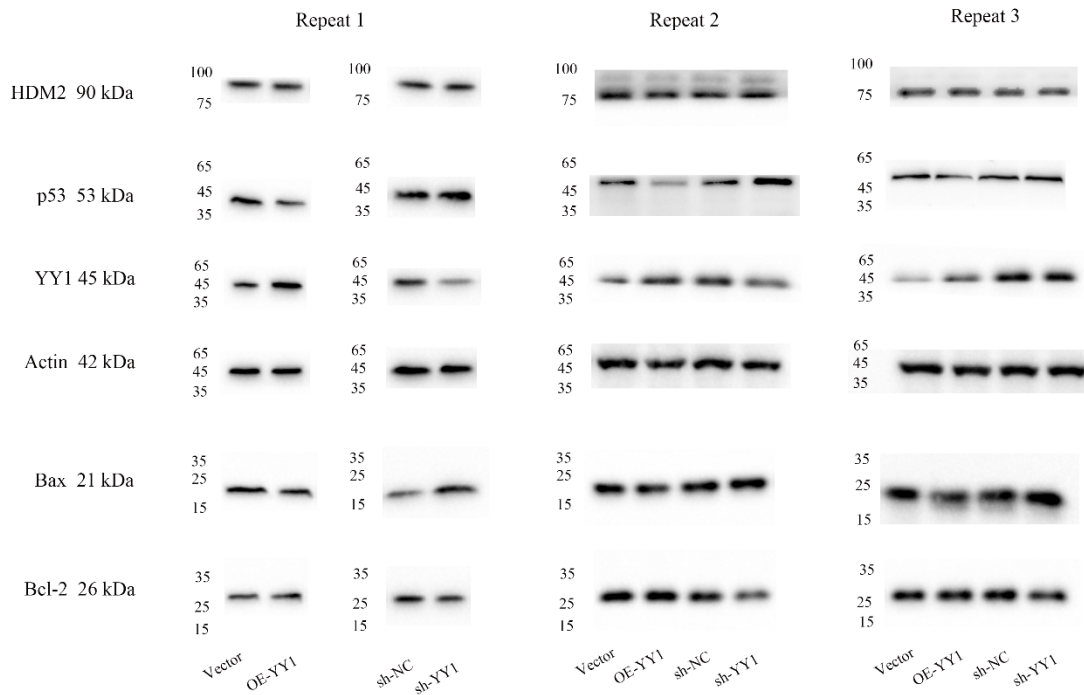


Figure S2 shows the whole blot after cutting membrane at molecular weight 100 kDa, 75 kDa, 65 kDa, 35 kDa and 15 kDa for HDM2 (90 kDa), p53 (53 kDa), YY1 (45 kDa), Actin (42 kDa), Bax (21 kDa) and Bcl-2 (26 kDa). These represent western blot analysis shown in Fig. 2F.

Since we only added one molecular marker each time in western blot and cut the membrane to many different target bands, we failed to show the complete molecular marker in each band. Please consider our situation.