

Supplementary

Shotgun Lipidomics for Differential Diagnosis of HPV-Associated Cervix Transformation

Natalia L. Starodubtseva ^{1,2,*}, Vitaliy V. Chagovets ², Maria E. Nekrasova ², Niso M. Nazarova ², Alisa O. Tokareva ^{2,3}, Olga V. Bourmenskaya ², Djamilja I. Attoeva ², Eugenii N. Kukaev ^{1,2,3}, Dmitriy Y. Trofimov ², Vladimir E. Frankevich ² and Gennady T. Sukhikh ^{2,4}

¹ Moscow Institute of Physics and Technology, 141700 Moscow, Russia;
e_kukaev@oparina4.ru

² National Medical Research Center for Obstetrics Gynecology and Perinatology named after Academician V.I. Kulakov of the Ministry of Healthcare of Russian Federation, 117997 Moscow, Russia; v_chagovets@oparina4.ru (V.V.C.); m_nekrasova@oparina4.ru (M.E.N.); n_nazarova@oparina4.ru (N.M.N.); alisa.tokareva@phystech.edu (A.O.T.); o_bourmenskaya@oparina4.ru (O.V.B.); d_attoeva@oparina4.ru (D.I.A.); d_trofimov@oparina4.ru (D.Y.T.); vfrankevich@gmail.com (V.E.F.); g_sukhikh@oparina4.ru (G.T.S.)

³ V.L. Talrose Institute for Energy Problems of Chemical Physics, Russia Academy of Sciences, 119991 Moscow, Russia

⁴ Department of Obstetrics, Gynecology, Perinatology and Reproductology, First Moscow State Medical University named after I.M. Sechenov, 119991 Moscow, Russia

* Correspondence: n.starodub@phystech.edu

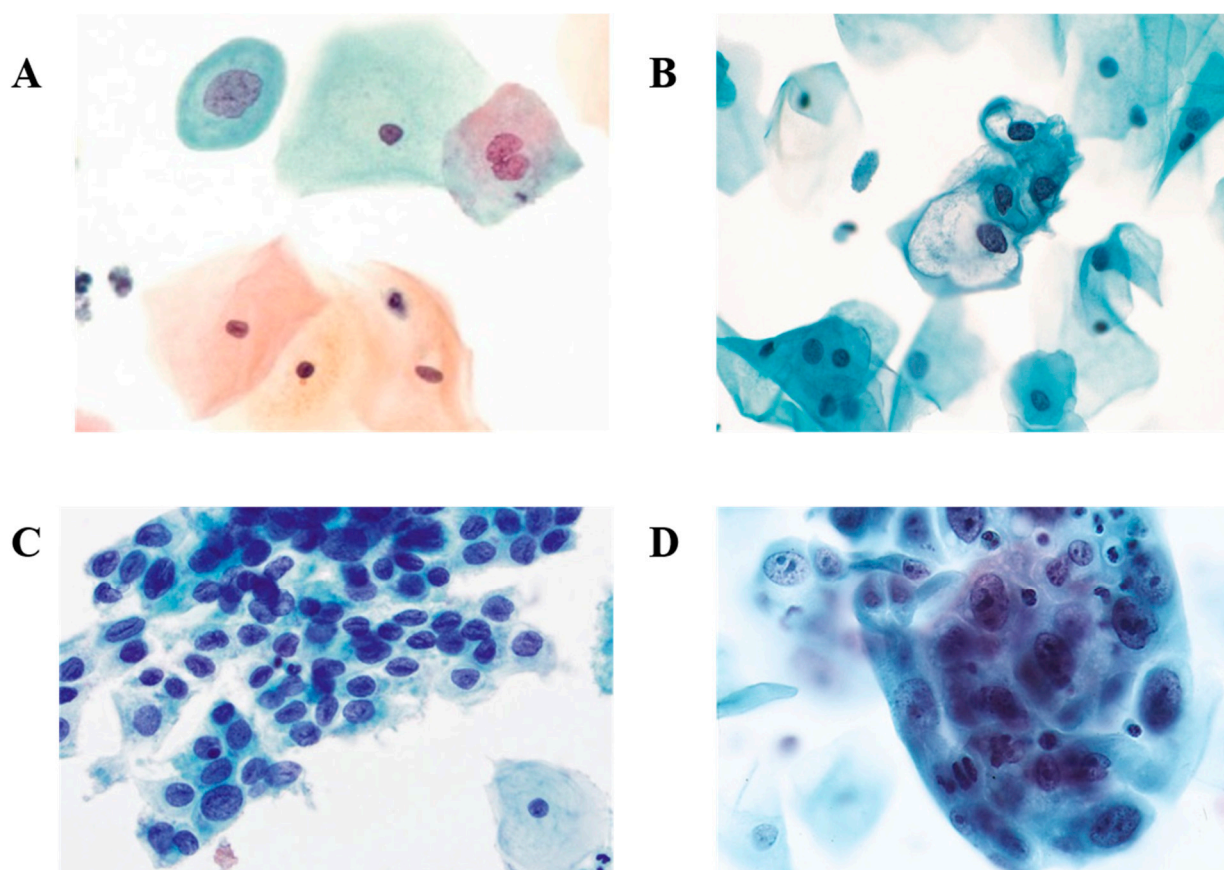


Figure S1. Cytology: (A) chronic cervicitis with HPV infection; (B) LSIL, (C) HSIL and (D) cervical cancer.

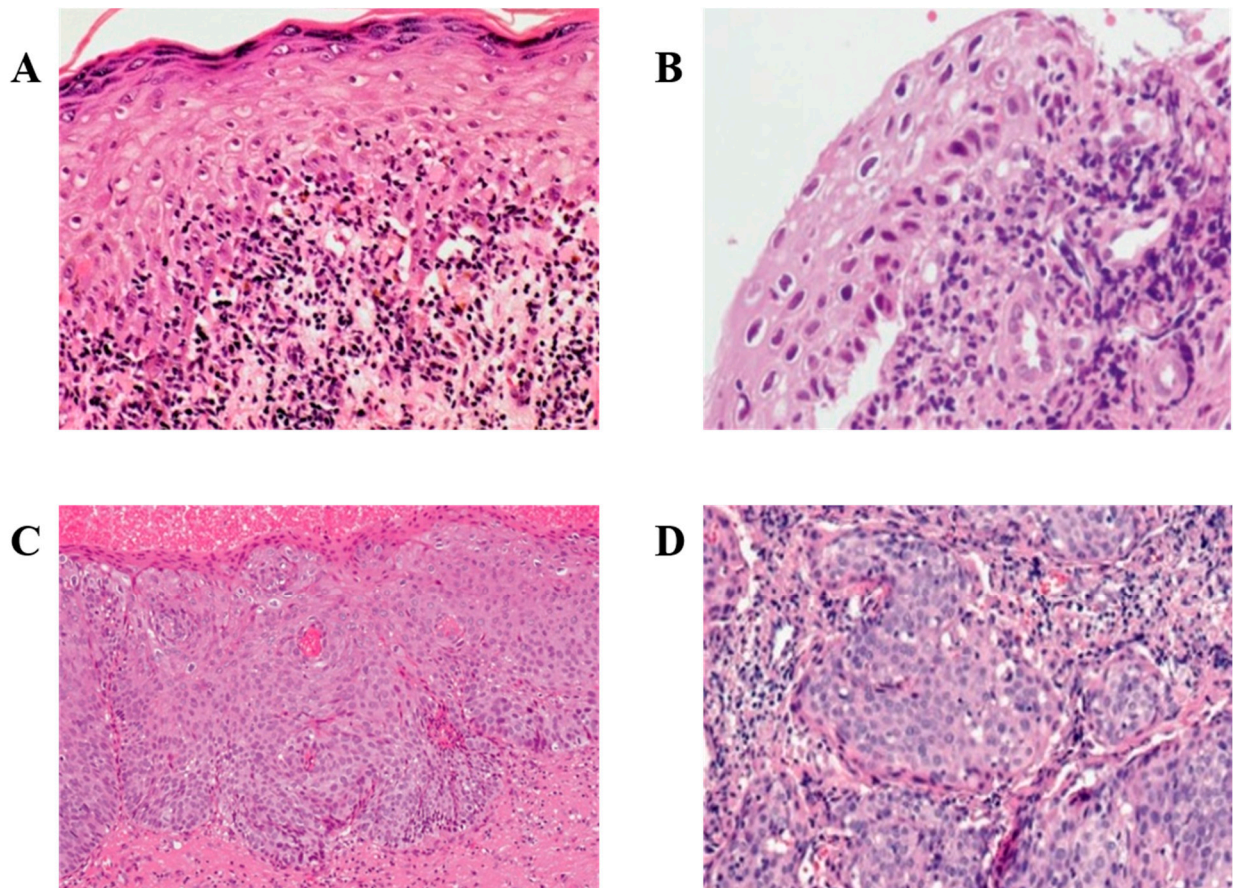


Figure S2. Hystology: (A) chronic cervicitis with HPV infection; (B) LSIL, (C) HSIL and (D) cervical cancer.

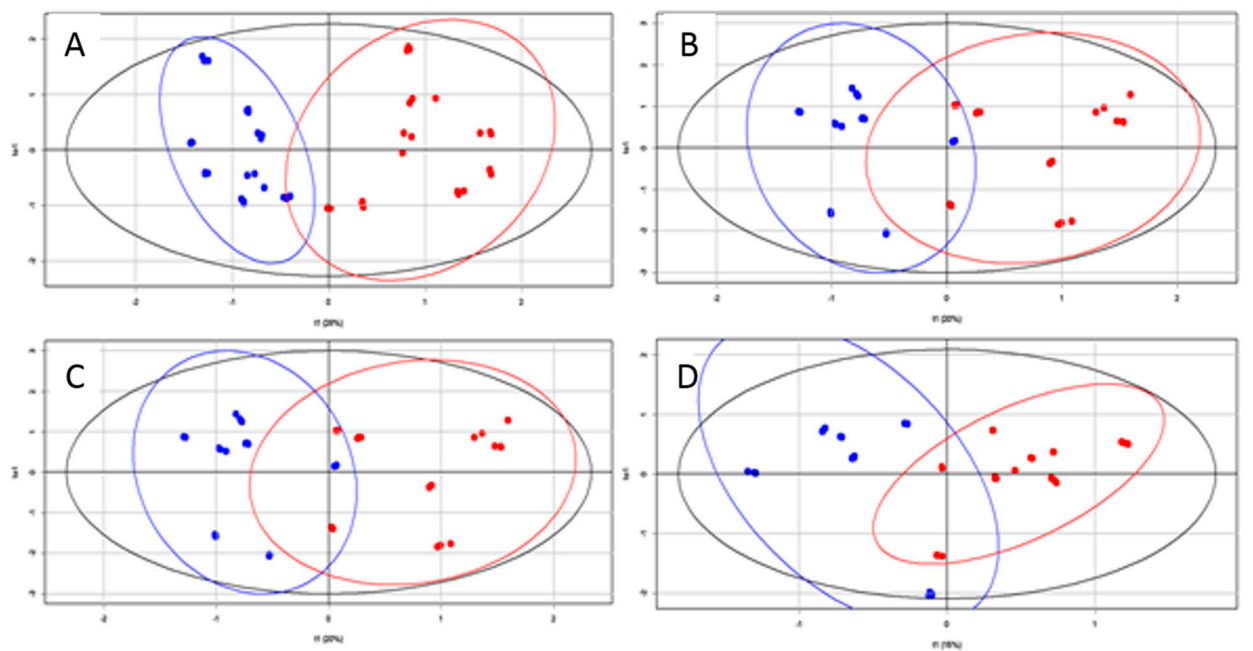


Figure S3. OPLS-DA score plots of ESI-MS data for damaged and surrounding tissues from patients with (A) chronic cervicitis; (B) LSIL; (C)

