

Neuropharmacological activity of the acetonic extract of *Malpighia mexicana* A. Juss. and its phytochemical profile

Dante Avilés-Montes, David Osvaldo Salinas-Sánchez*, César Sotelo-Leyva, Alejandro Zamilpa, Franceli Itzel Batalla-Martinez, Rodolfo Abarca-Vargas, Juan Manuel Rivas-González, Óscar Dorado, Rodolfo Figueroa-Brito, Vera L. Petricevich, Dulce Lourdes Morales-Ferra, and Manasés González-Cortazar *

UPLC, Gas Chromatography and Mass Spectrometry Data

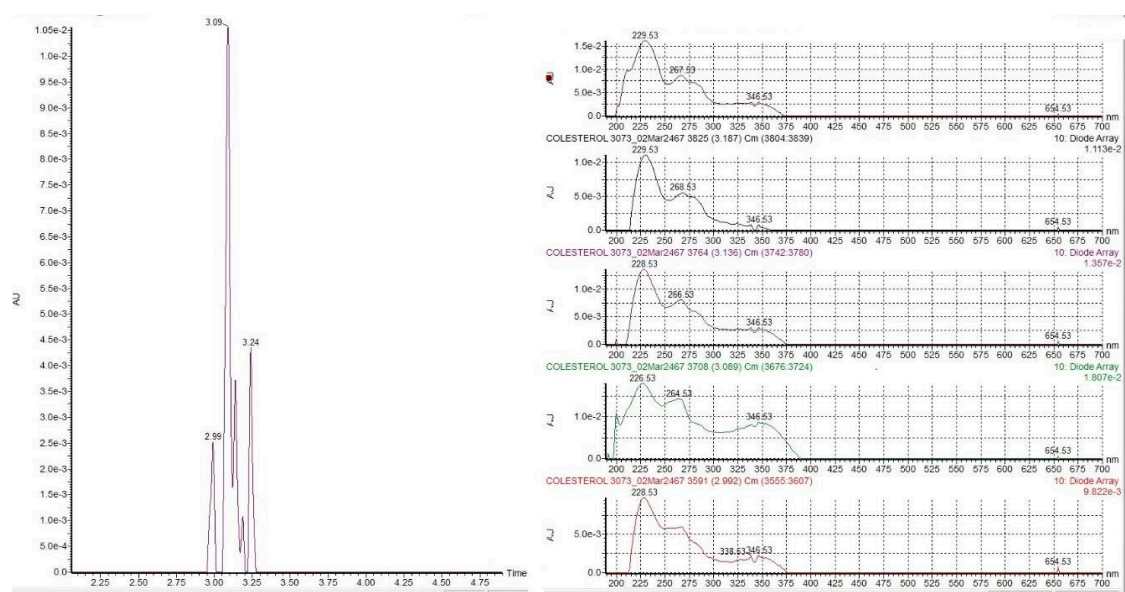


Figure S1: UPLC chromatogram and UV spectra of F14.

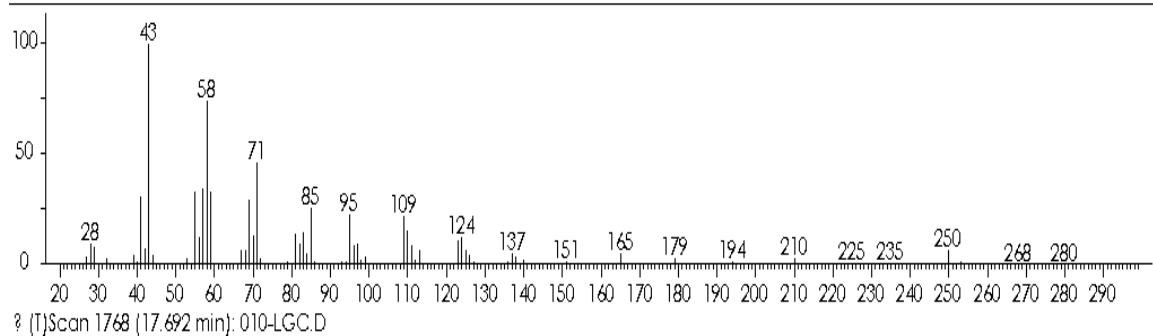
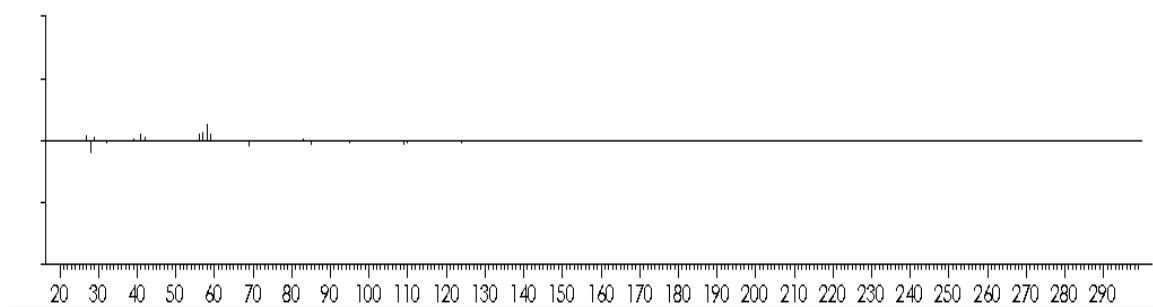
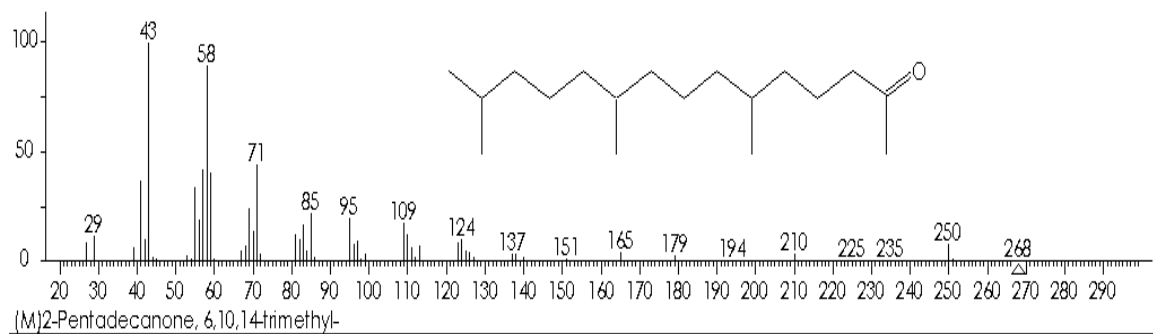


Figure S2: MS data of peak 1 identified in F3.

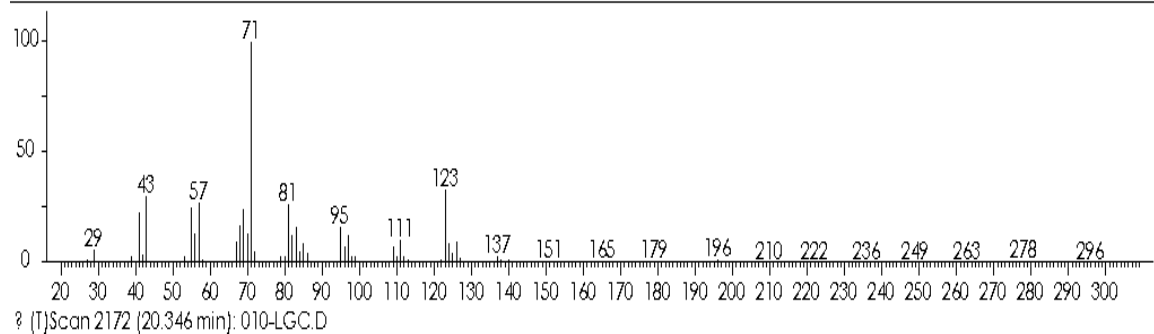
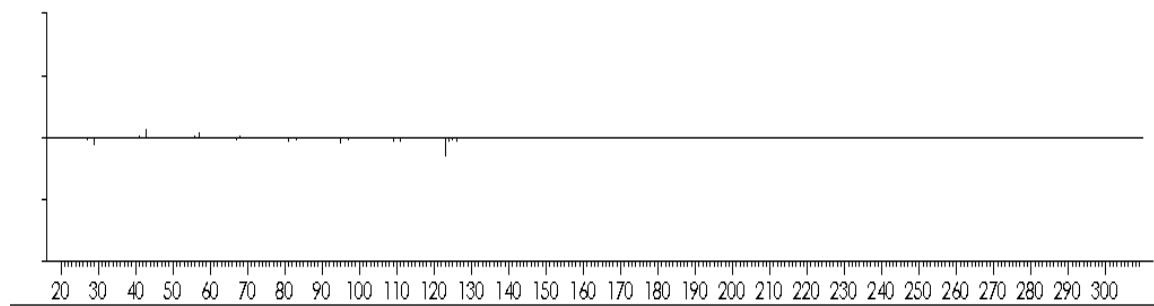
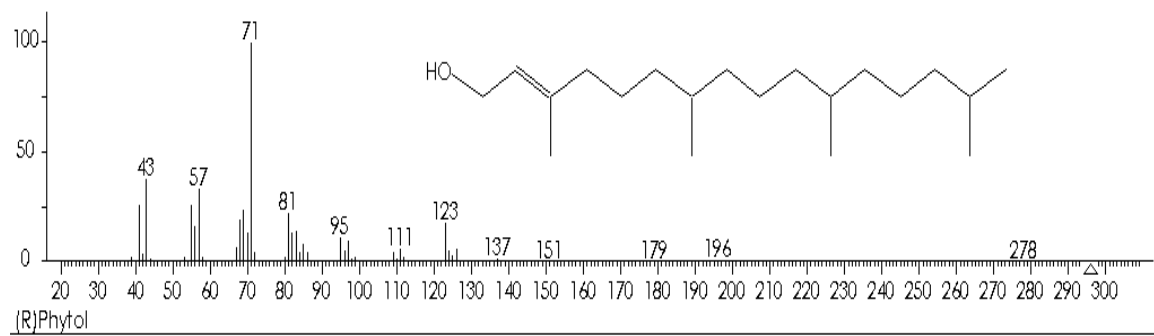
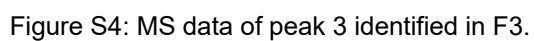


Figure S3: MS data of peak 2 identified in F3.



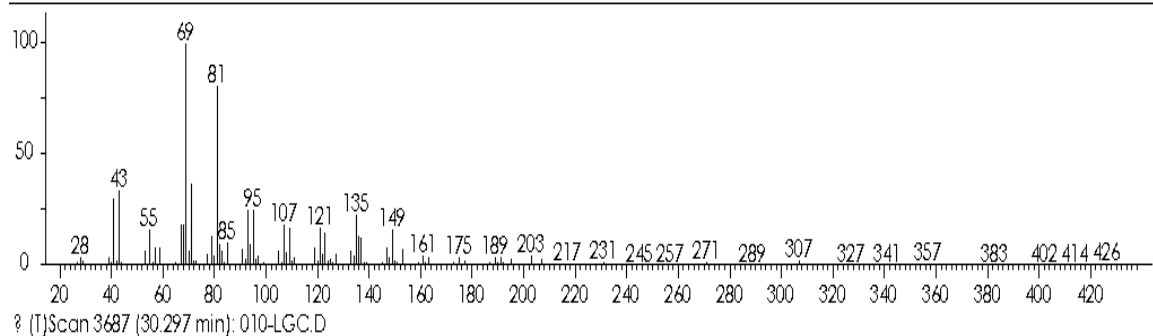
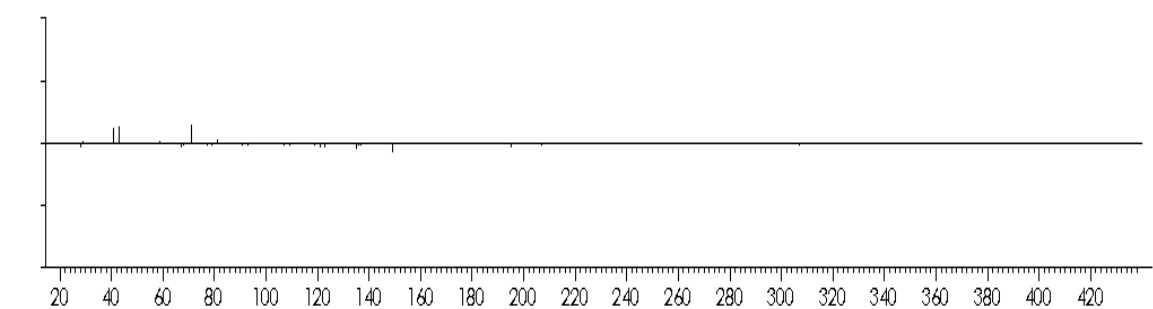
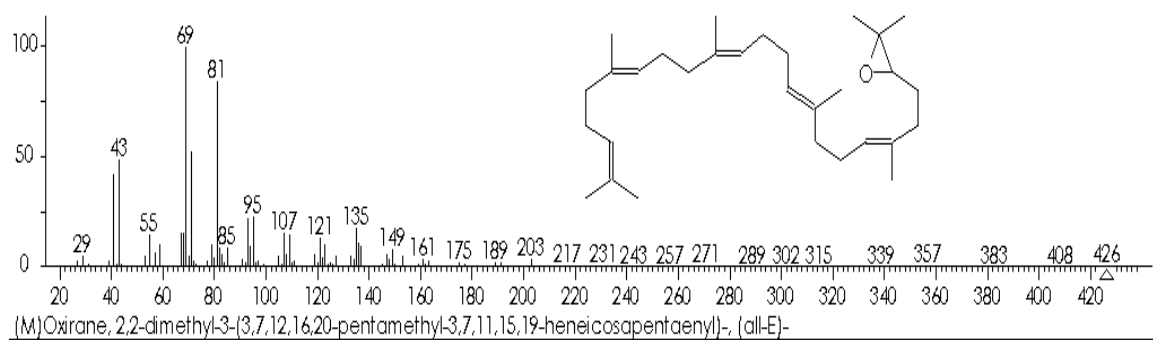


Figure S5: MS data of peak 4 identified in F3.

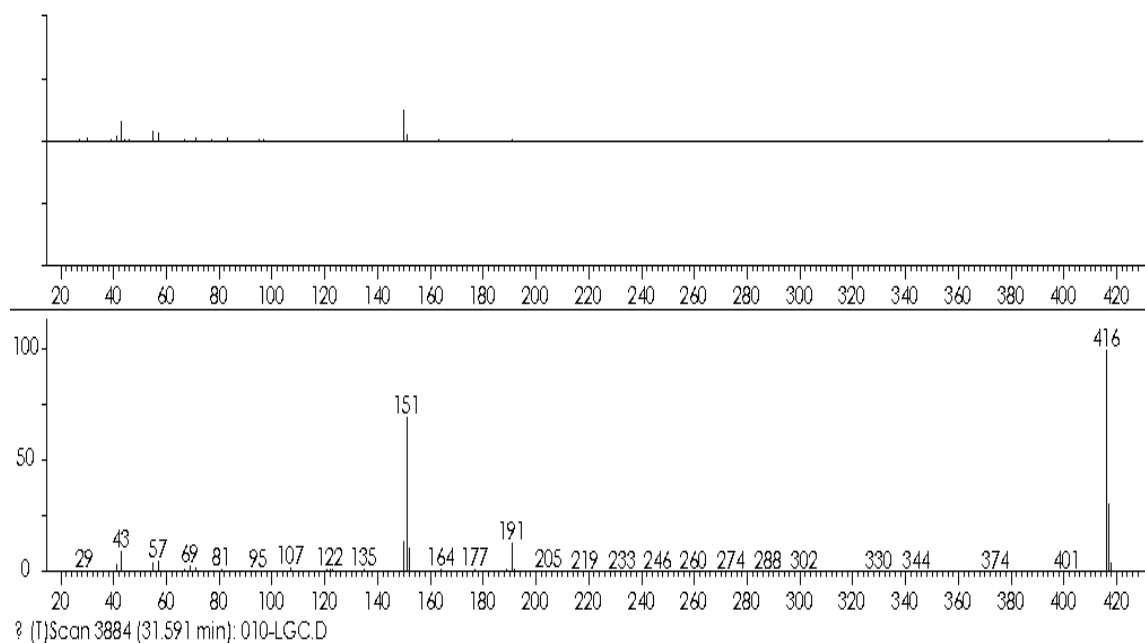
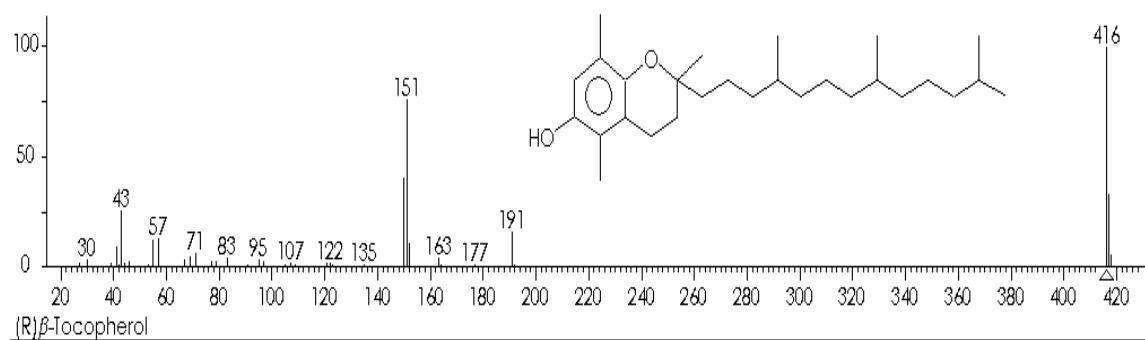
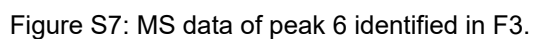
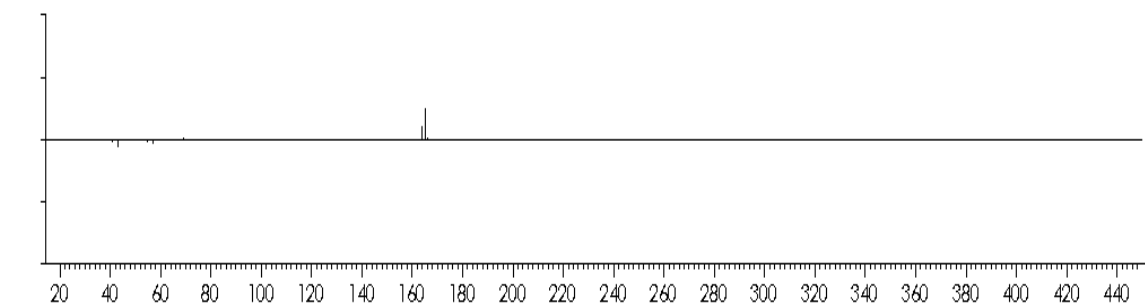


Figure S6: MS data of peak 5 identified in F3.



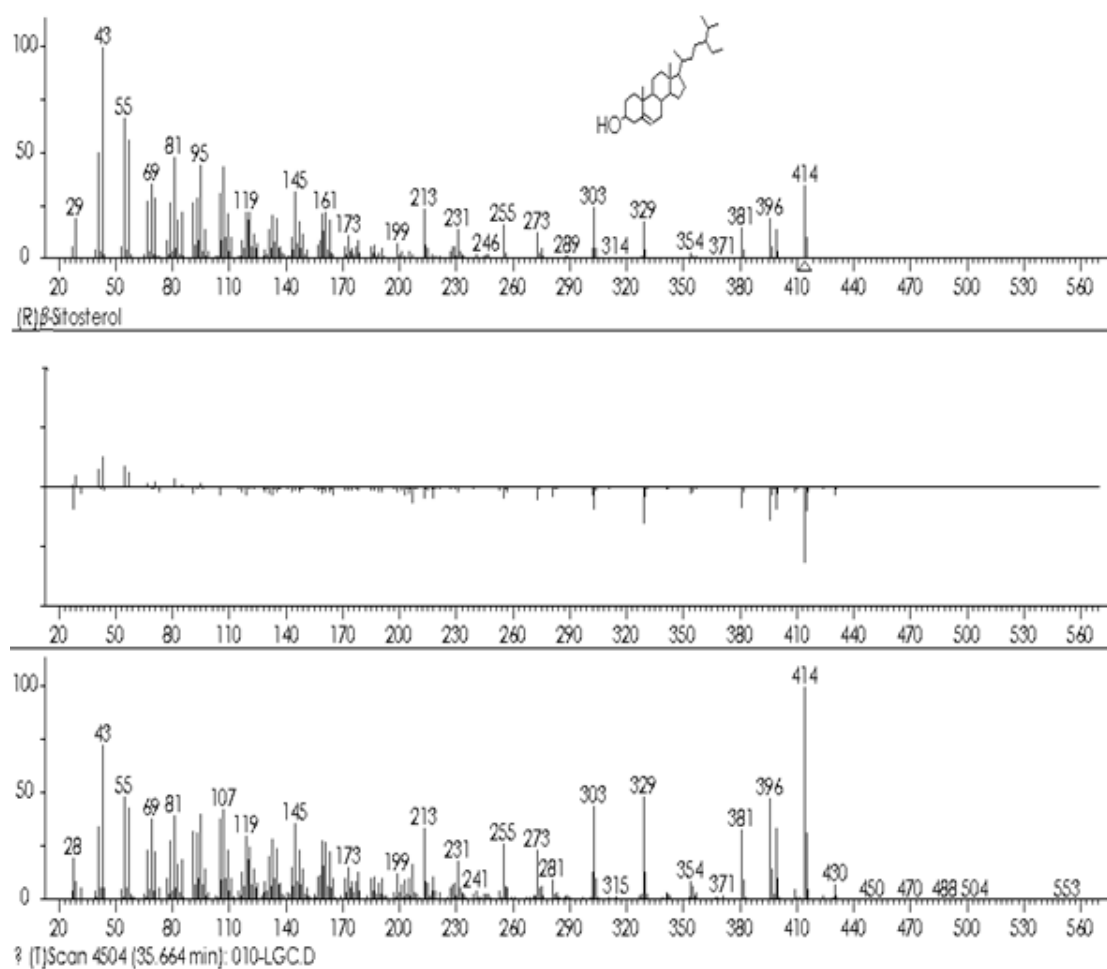


Figure S8: MS data of peak 7 identified in F3.

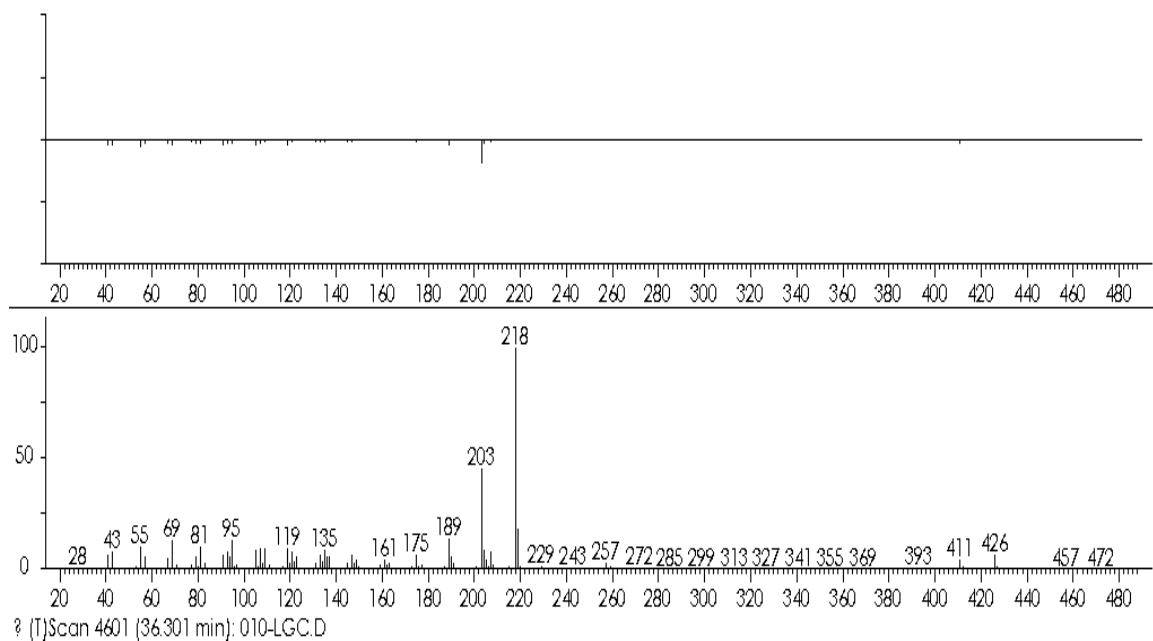
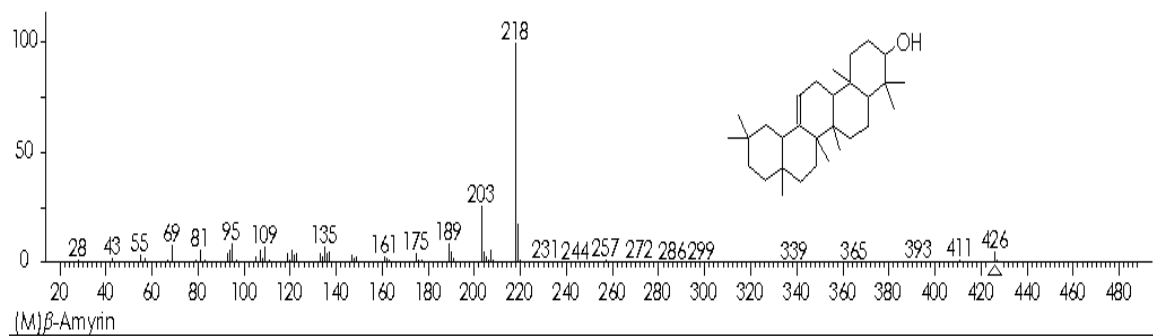


Figure S9: MS data of peak 8 identified in F3.

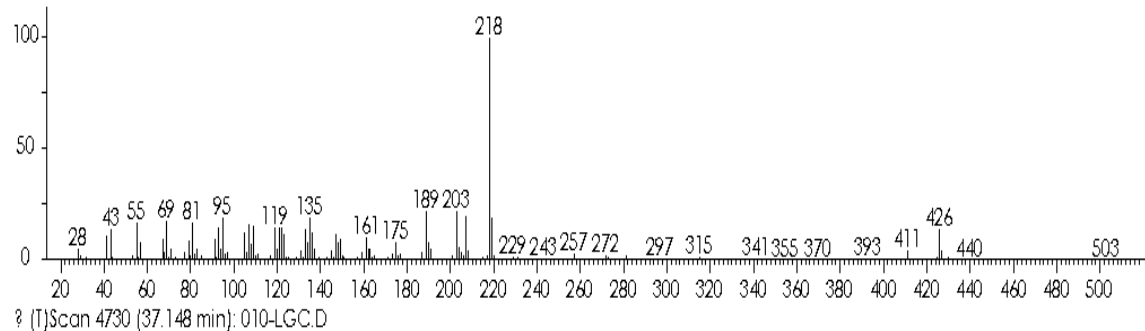
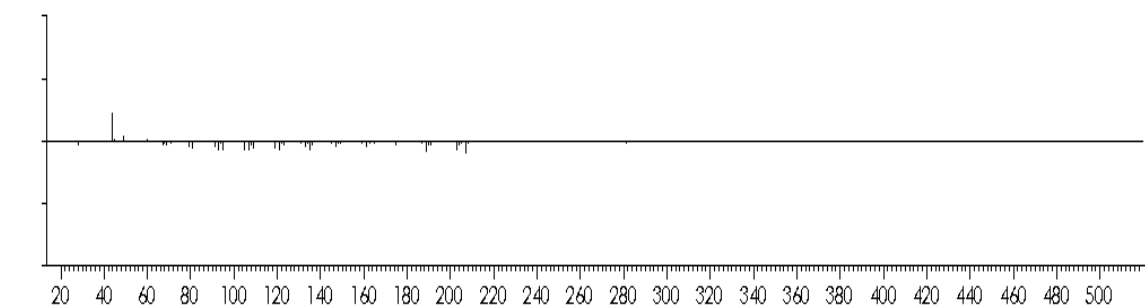
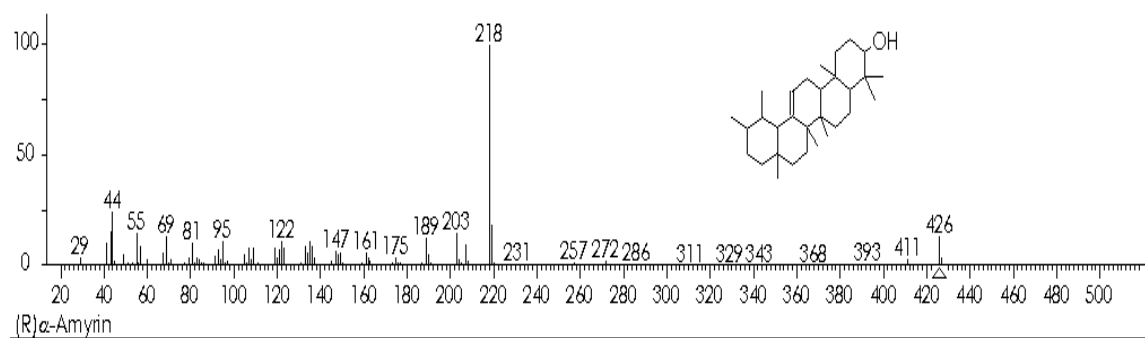
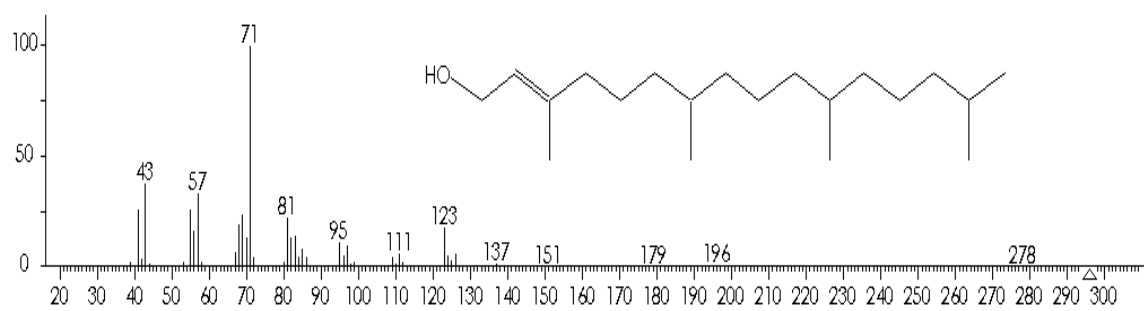
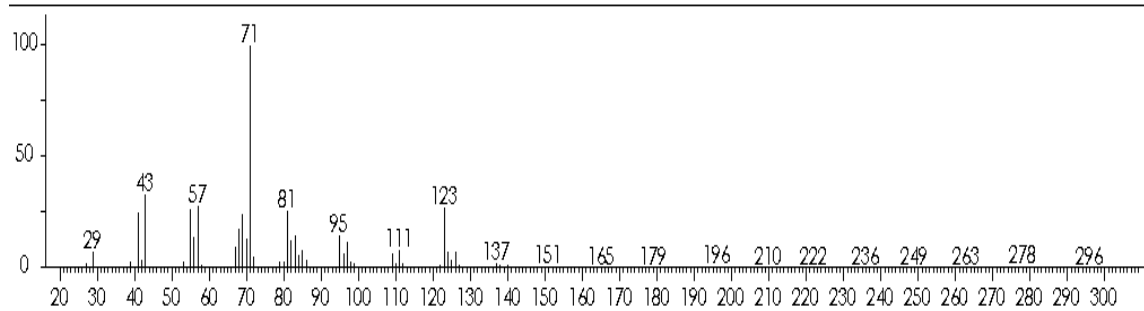
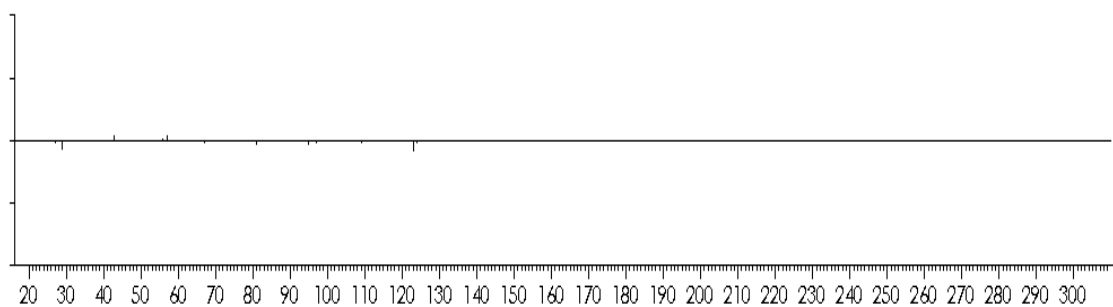


Figure S10: MS data of peak 9 identified in F3.



(R)-Phytol



? (T)Scan 2166 (20.306 min): 008-LGC.D

Figure S11: MS data of peak 1 identified in F4-10.

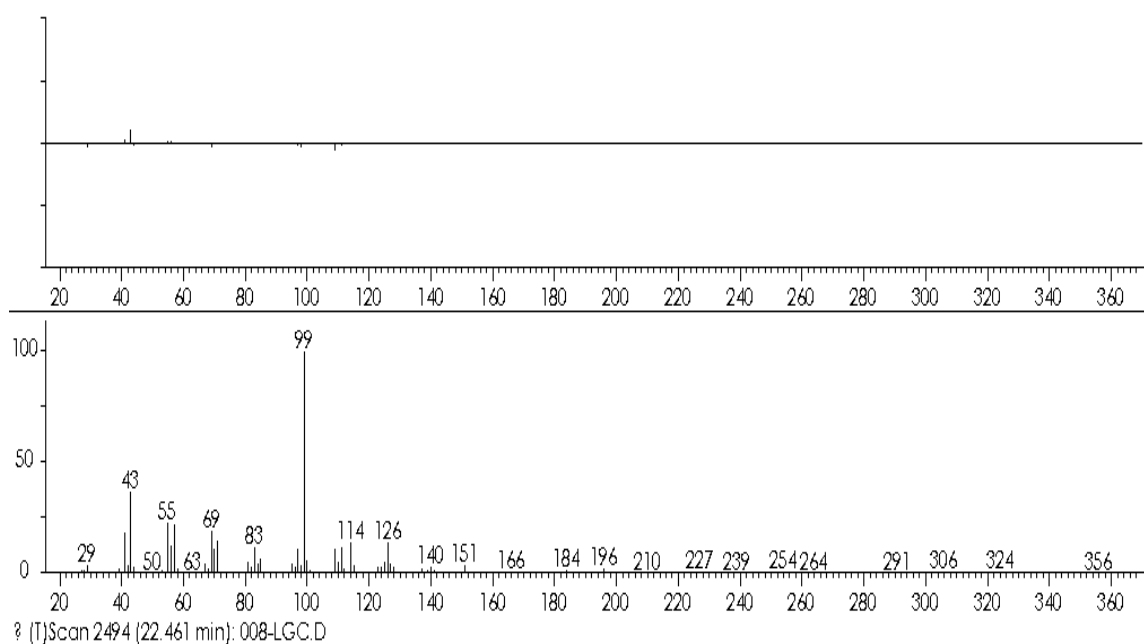
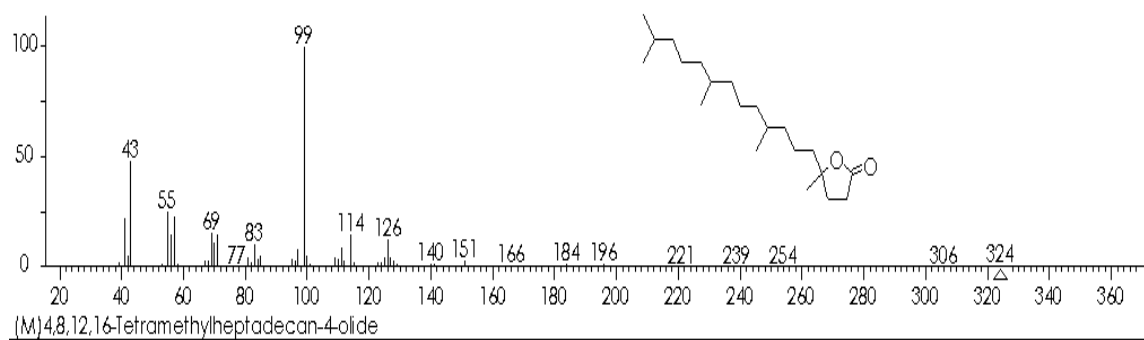


Figure S12: MS data of peak 2 identified in F4-10.

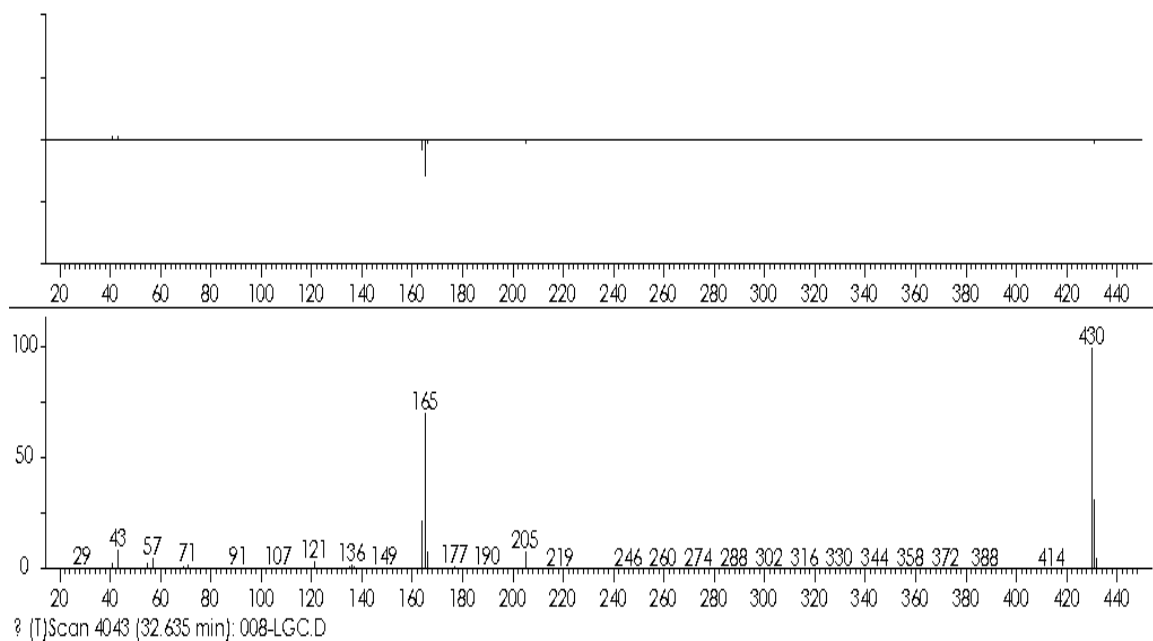
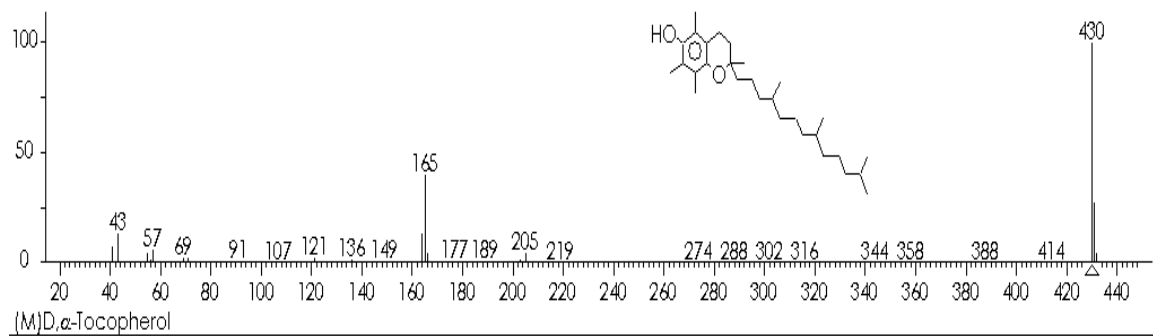


Figure S13: MS data of peak 3 identified in F4-10.

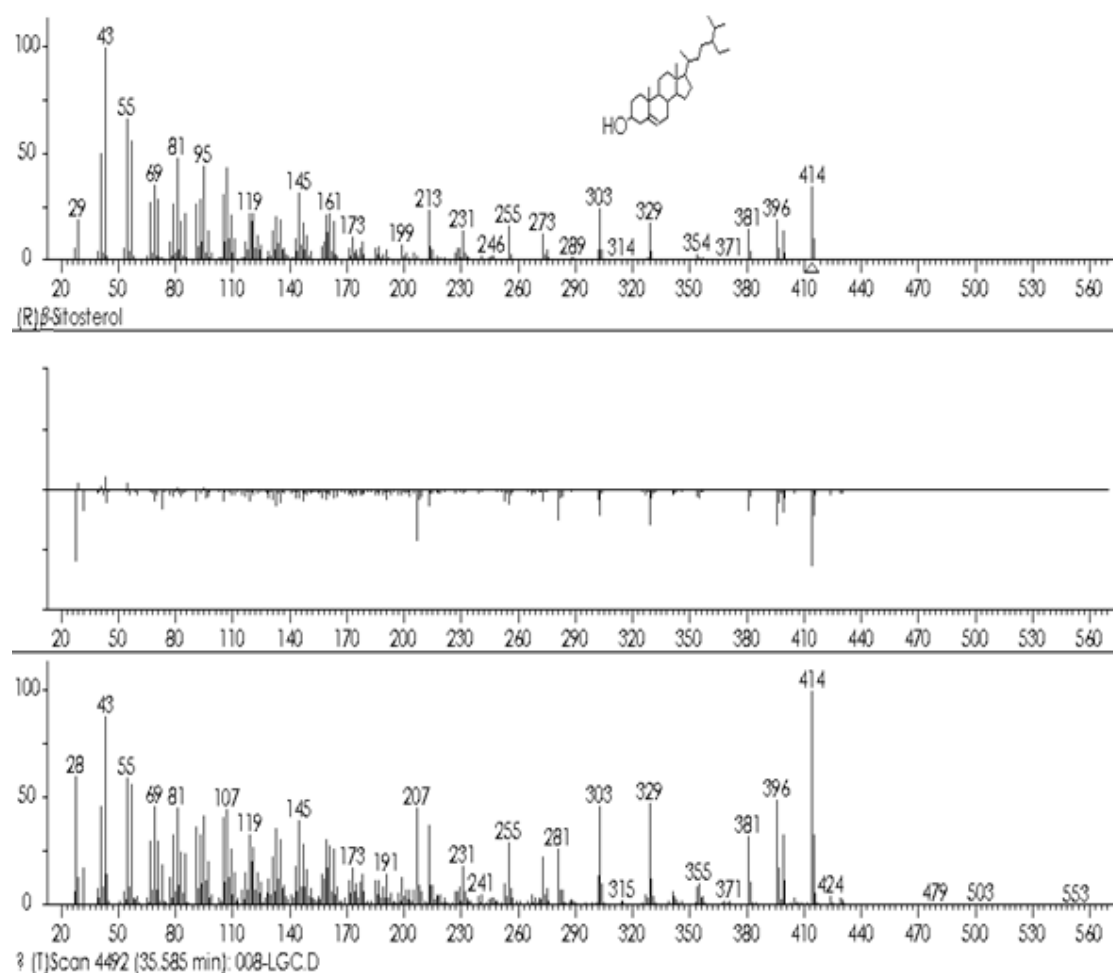


Figure S14: MS data of peak 4 identified in F4-10.

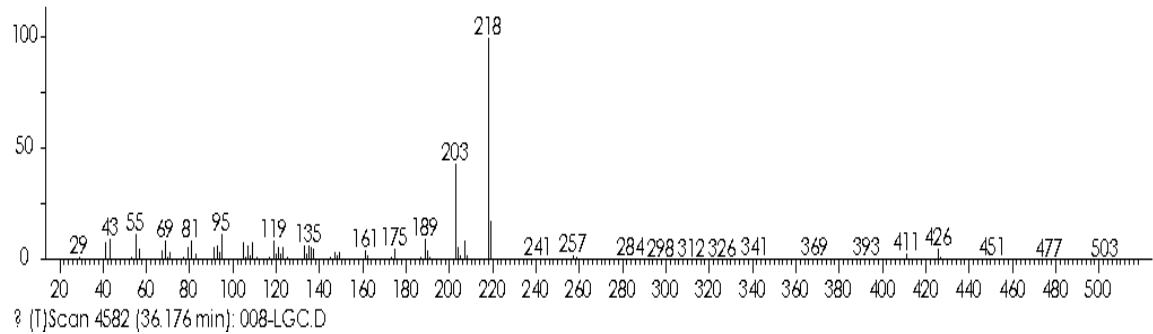
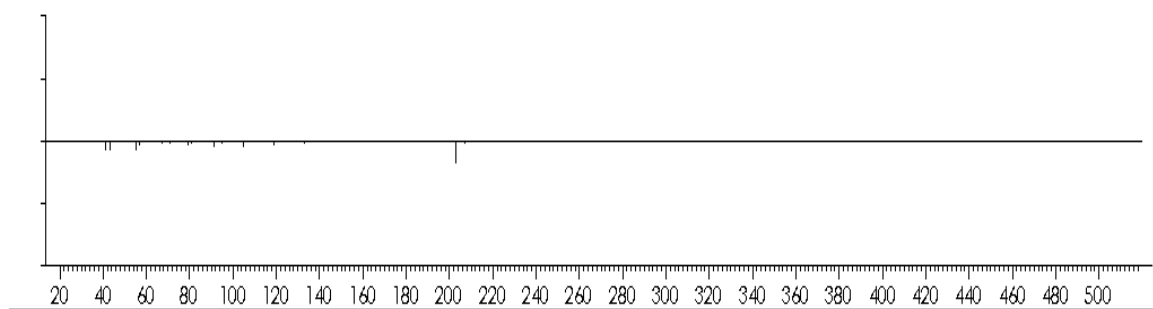
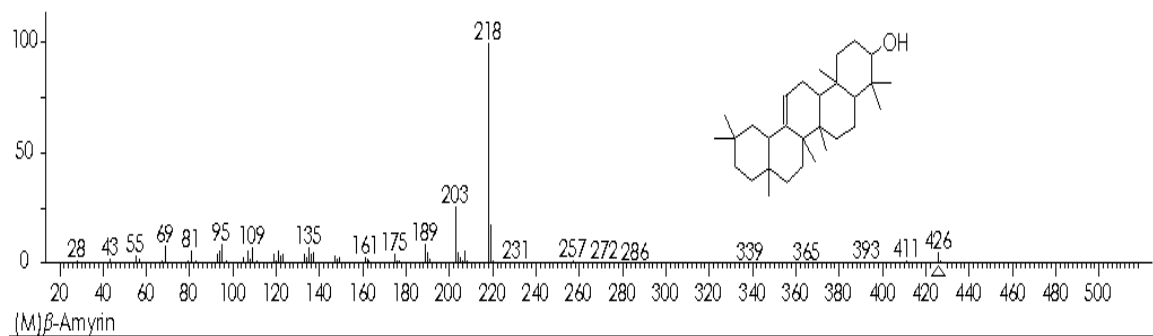


Figure S15: MS data of peak 5 identified in F4-10.

[illegible]

	Muscle tone	Limb tone																					
		Body tone																					
	Reflexes	Corneal reflex																					
		Reaching reflex																					
Autonomous scheme		Palpebral closure																					
		Salivation																					
		Piloerection																					
		Hypothermia																					
		Respiration rate																					

Figure S16: Irwin test for the acetone extract of *M. mexicana* A. Juss. Leaves (MmAE).
 += low, ++= medium, +++= high.