

LC-HRMS-Based Profiling: Antibacterial and Lipase Inhibitory Activities of Some Medicinal Plants for the Remedy of Obesity

Basanta Kumar Sapkota, Karan Khadayat, Babita Aryal, Jyoti Bashyal, Shankar Jaisi and Niranjana Parajuli *

Biological Chemistry Lab, Central Department of Chemistry, Tribhuvan University, Kirtipur, Kathmandu 44618, Nepal

* Correspondence: niranjana.parajuli@cdc.tu.edu.np; Tel.: +977-1-4332034

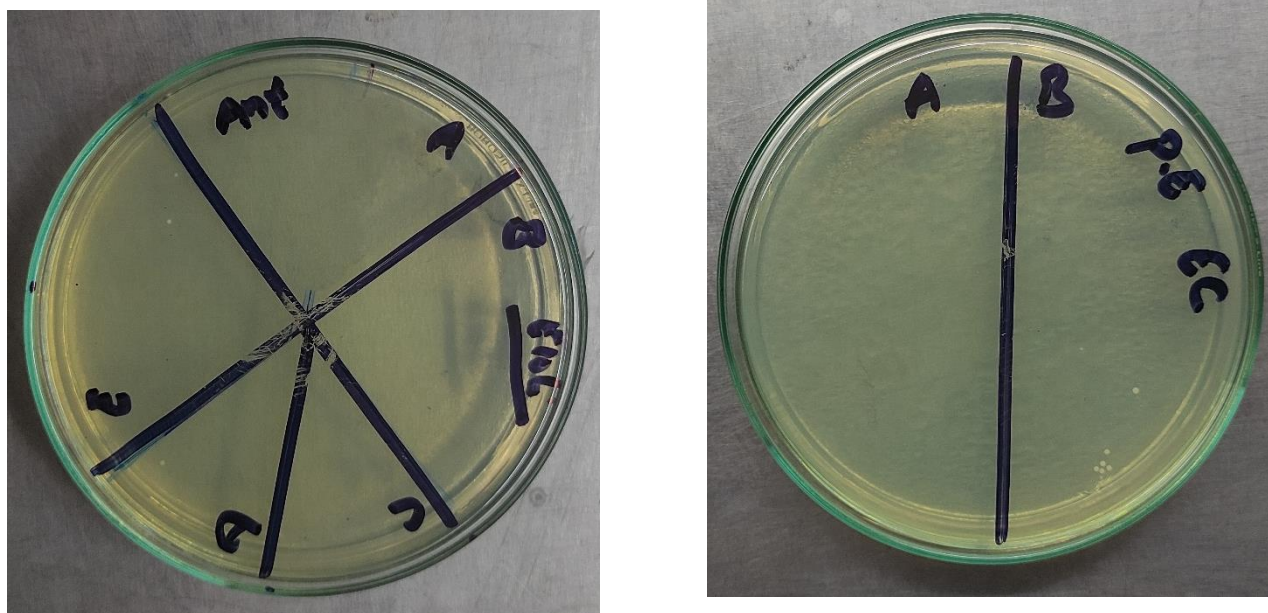


Figure S1 MBC of antibiotic and *P. emblica* against *E.coli*

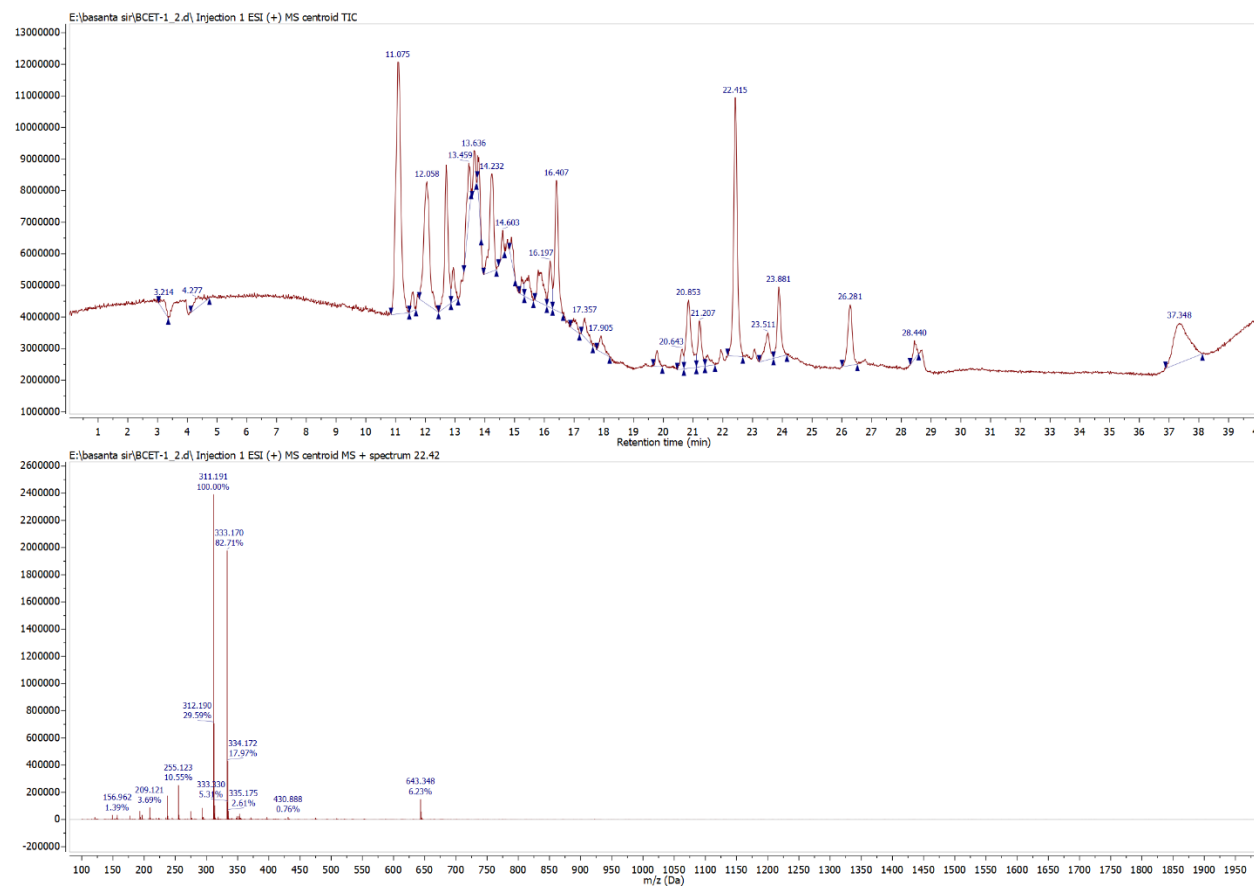
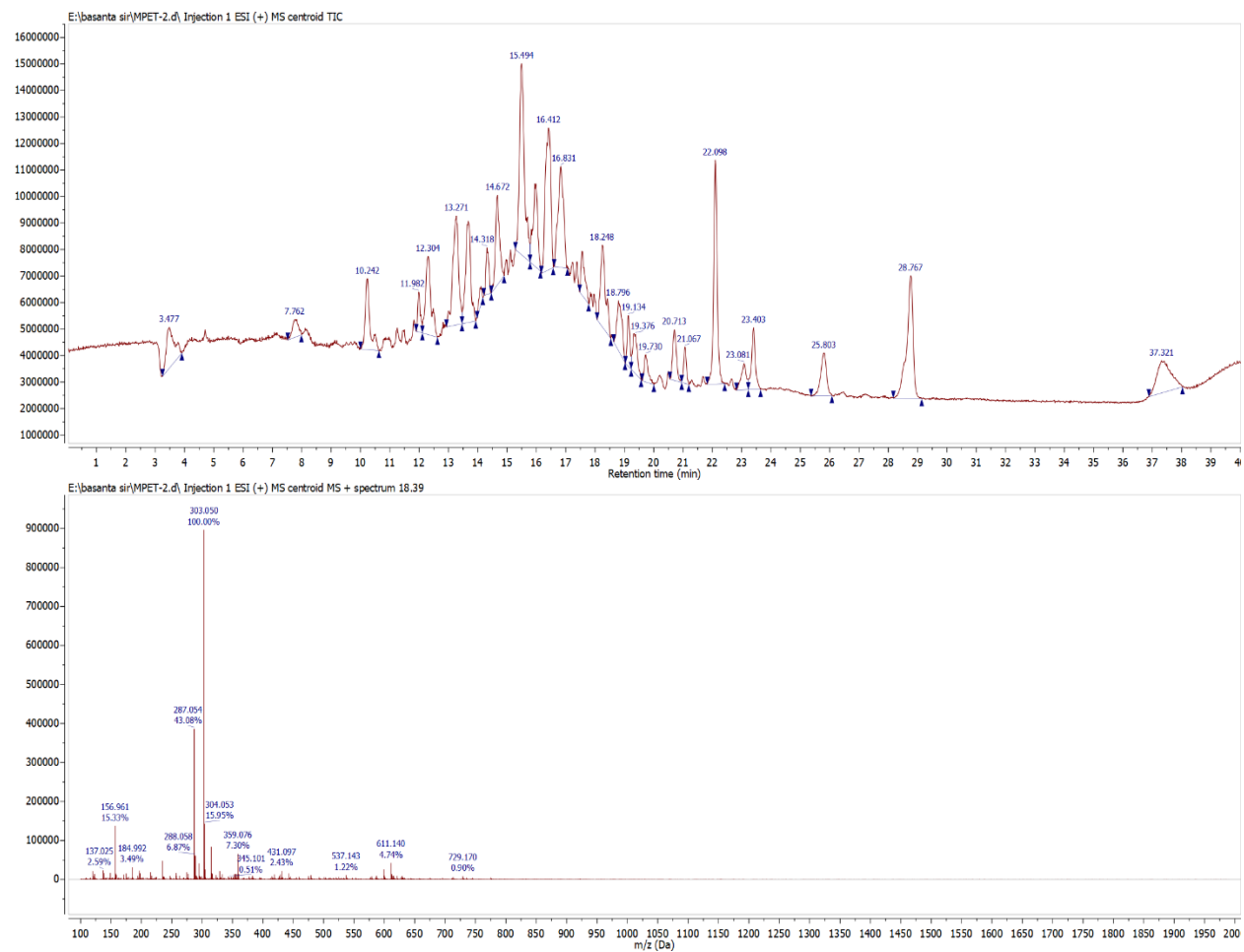


Figure S2 Mass spectrum of *Bergenia ciliata*

**Figure S3** Mass spectrum of *Mimosa pudica*

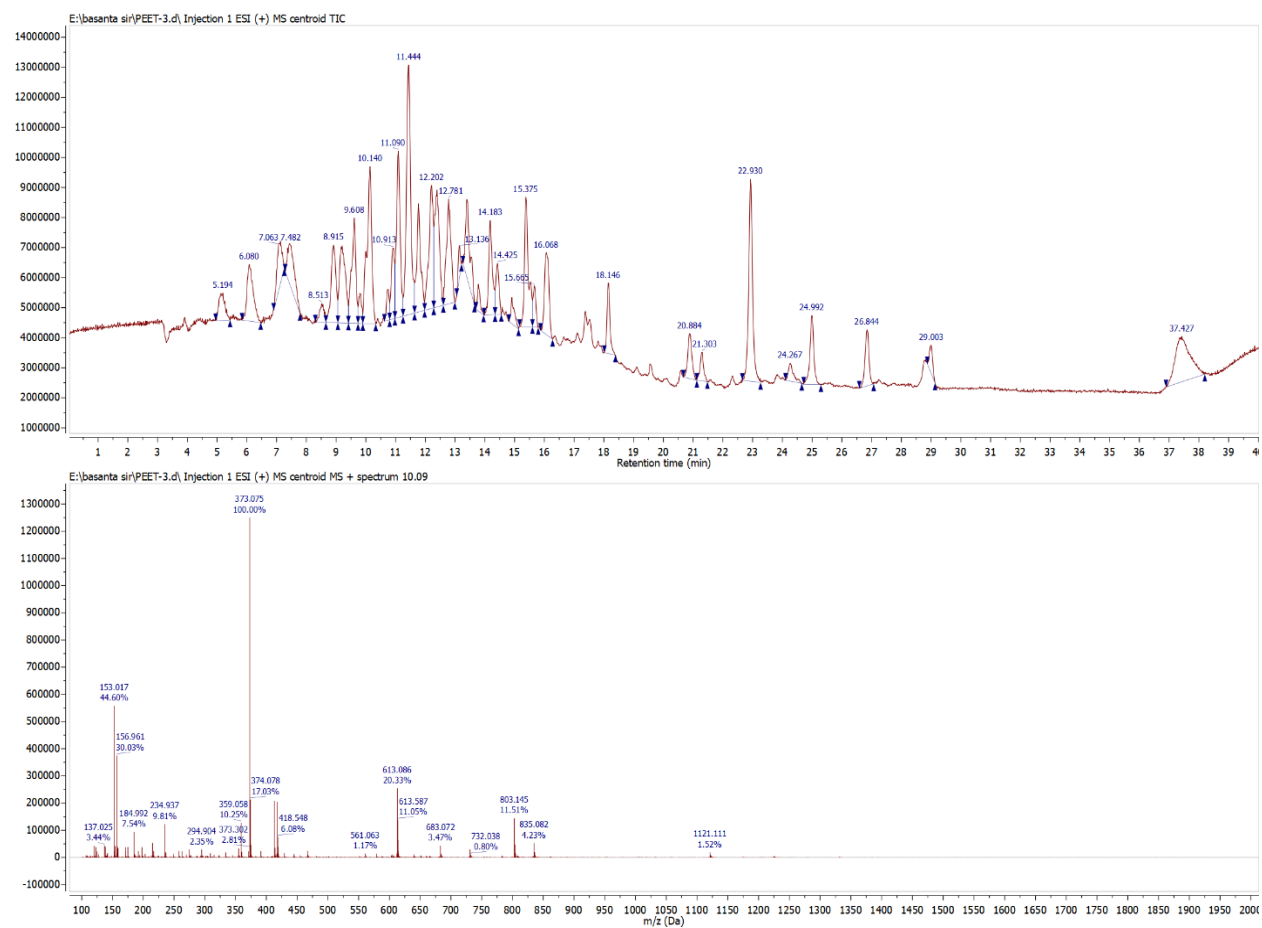


Figure S4 Mass spectrum of *Phyllanthus emblica*

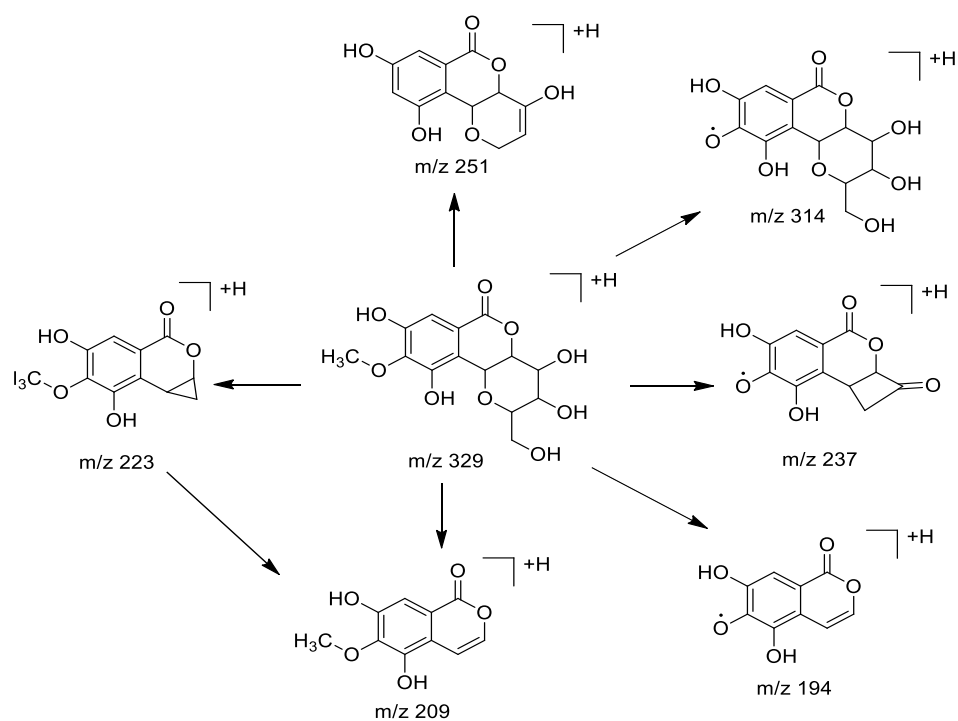


Figure S5 Fragmentation pattern of bergenin

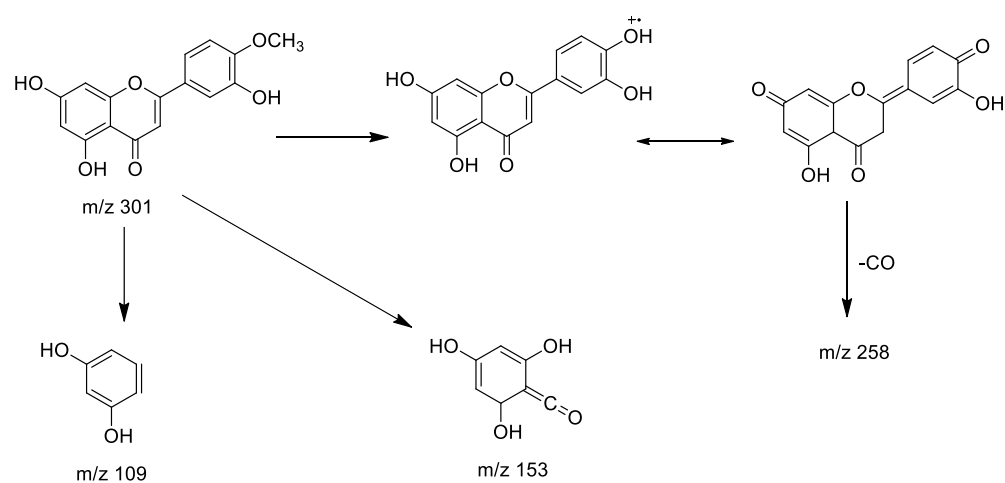


Figure S6 Fragmentation pattern of diosmetin

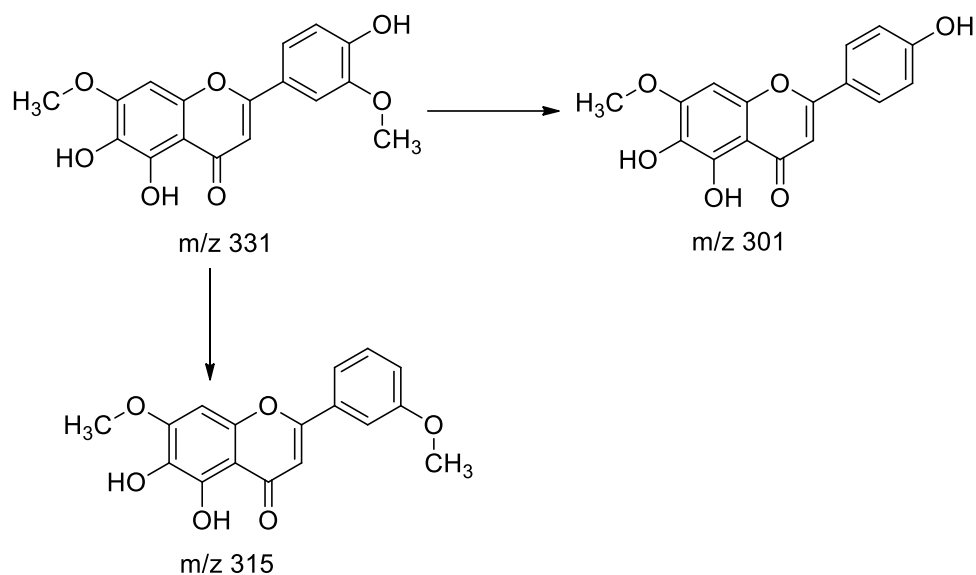


Figure S7 Fragmentation pattern of trihydroxy-dimethoxyflavone

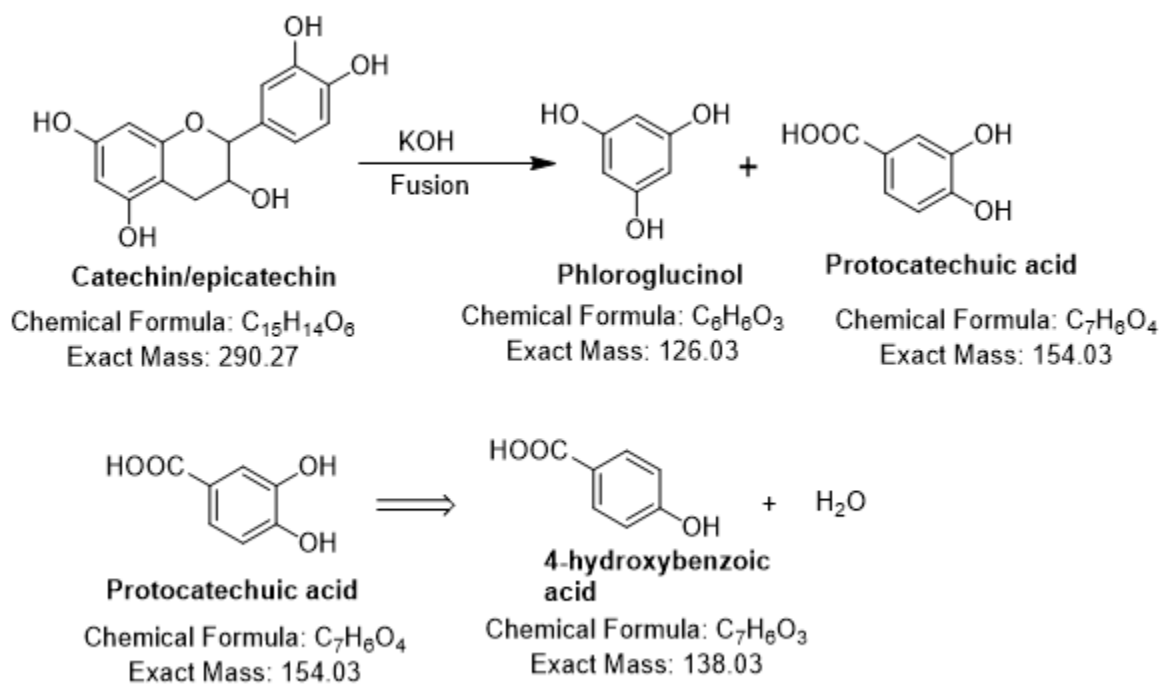


Figure S8 Fragmentation pattern of catechin/epicatechin.

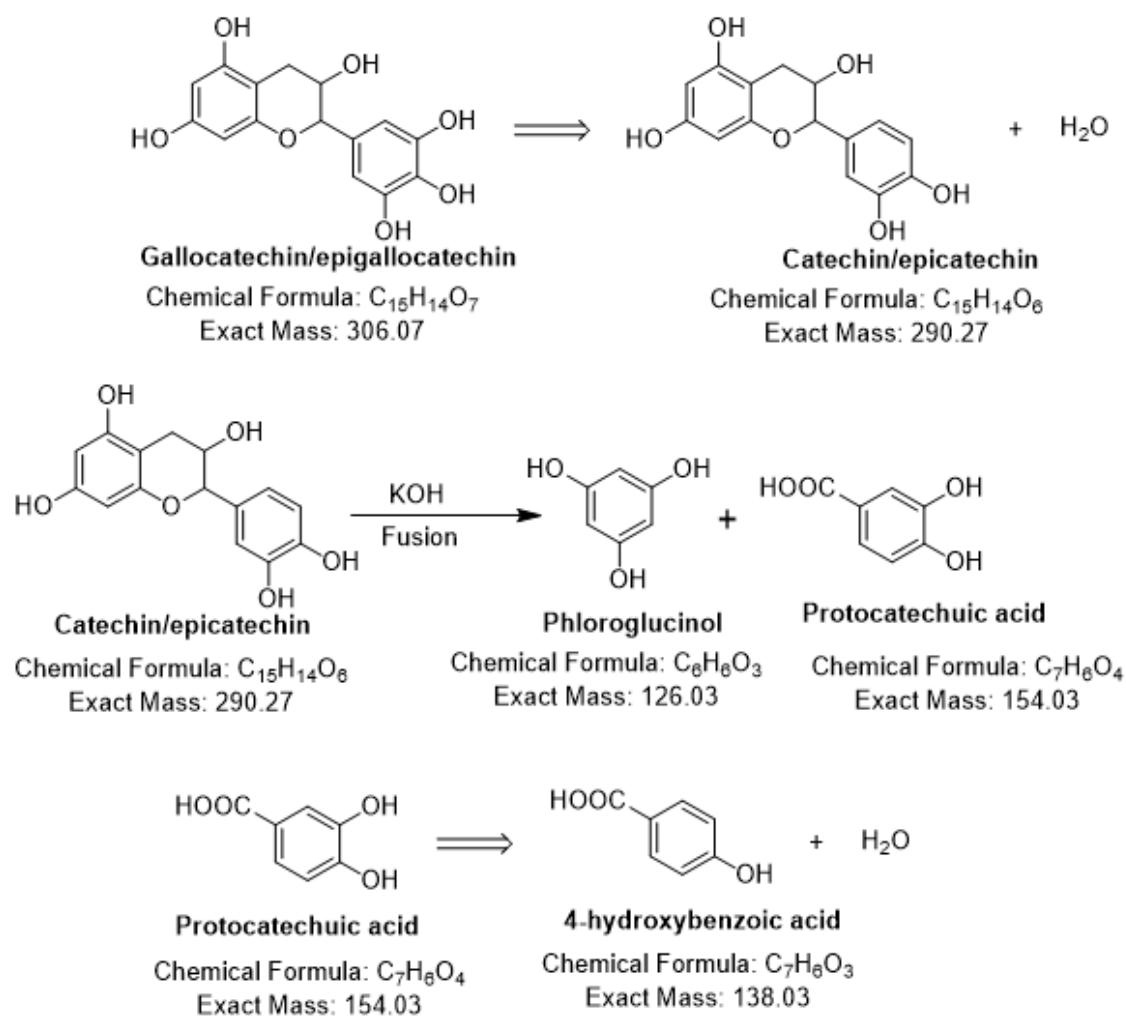


Figure S9 Fragmentation pattern of gallocatechin/epigallocatechin

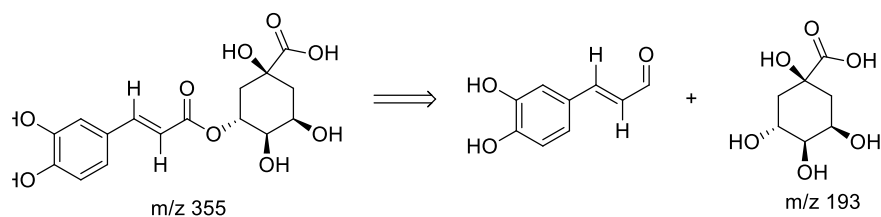


Figure S10 Fragmentation pattern of chlorogenic acid

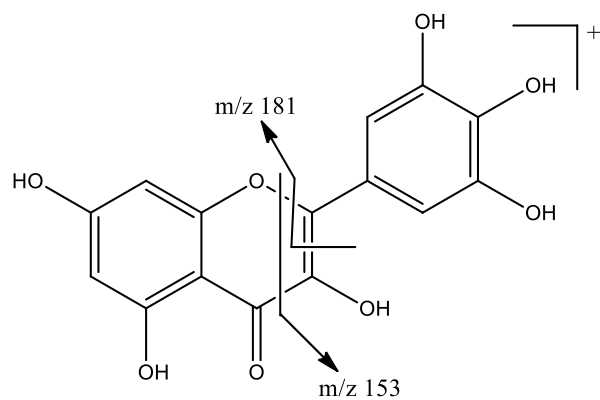


Figure S11 Fragmentation pattern of myricetin

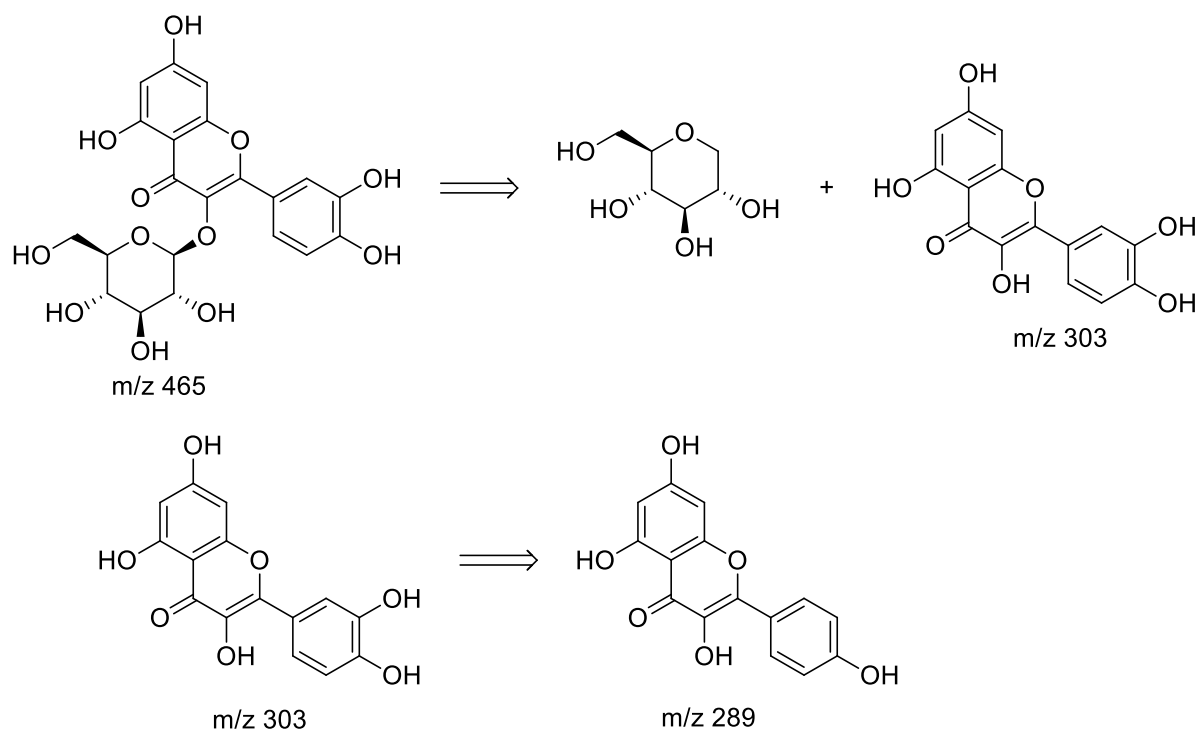


Figure S12 Fragmentation pattern of isoquercetin

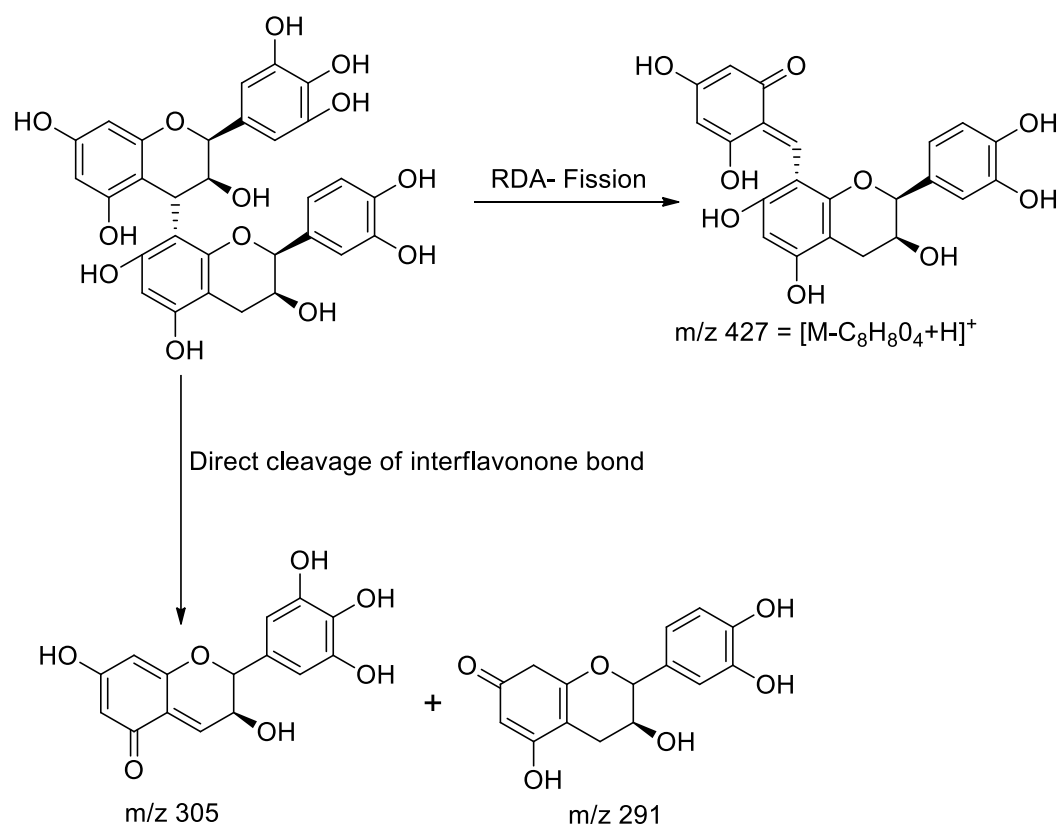


Figure S13 Fragmentation pattern of prodelfinidin B3

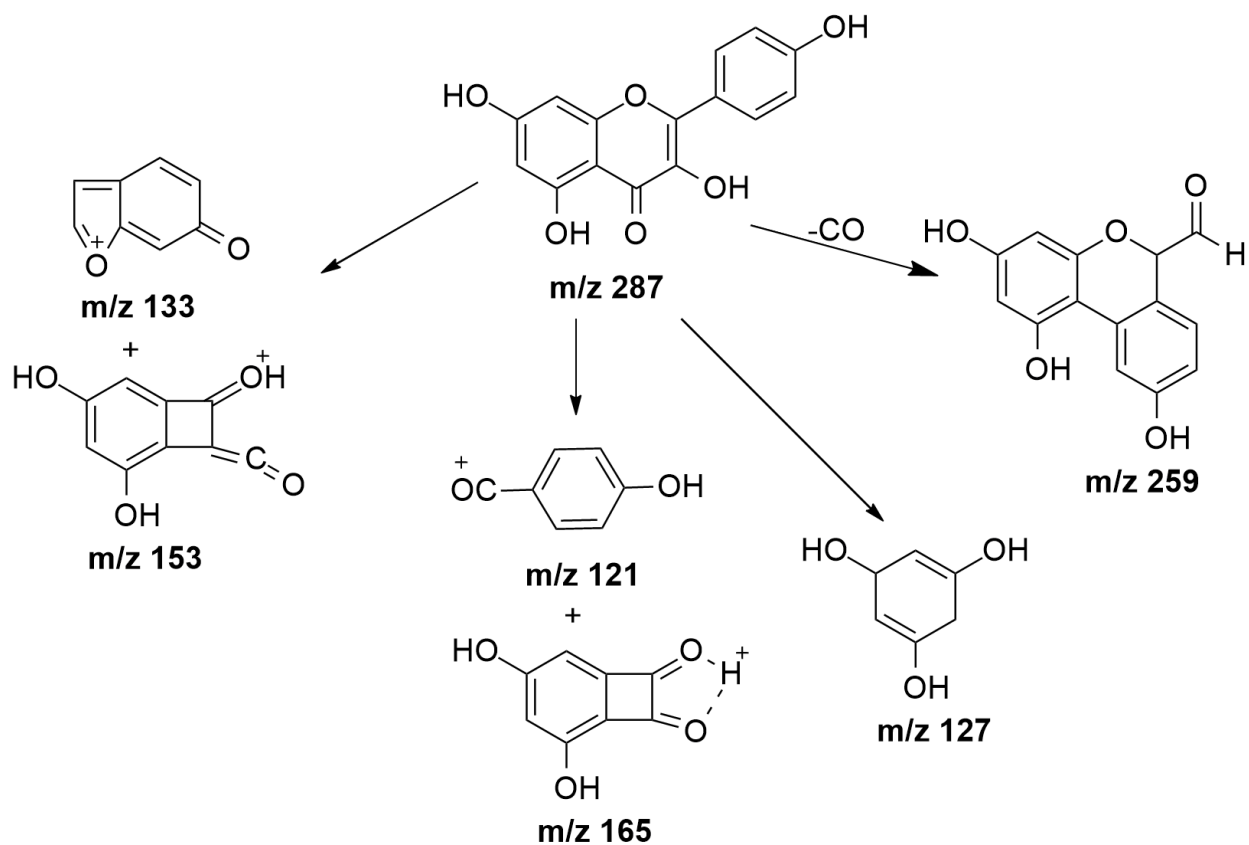


Figure S14 Fragmentation pattern of kaempferol.

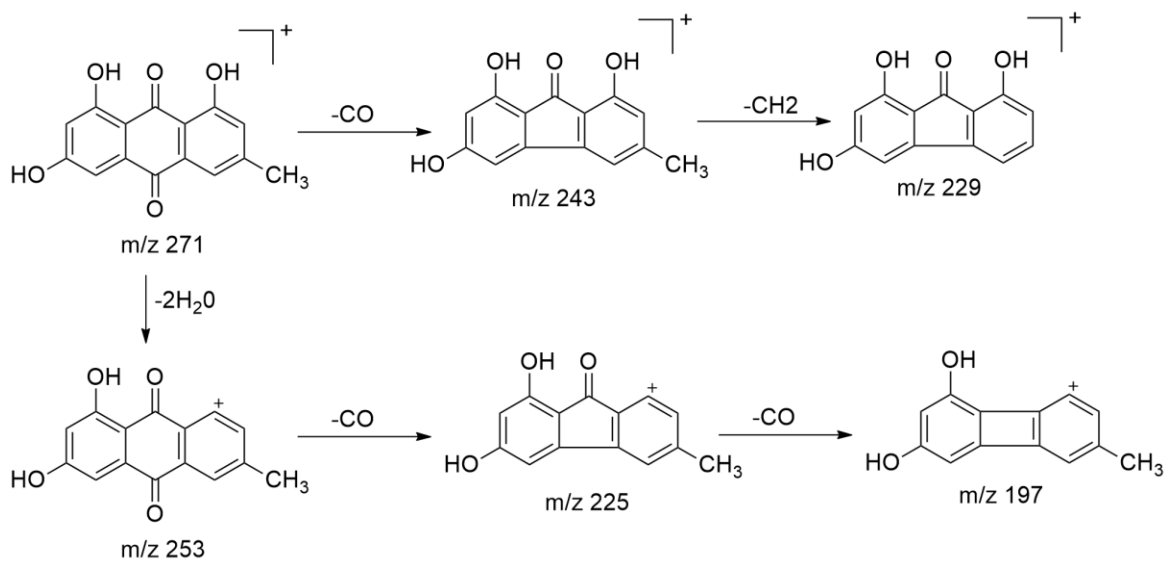


Figure S15 Fragmentation pattern of emodin.

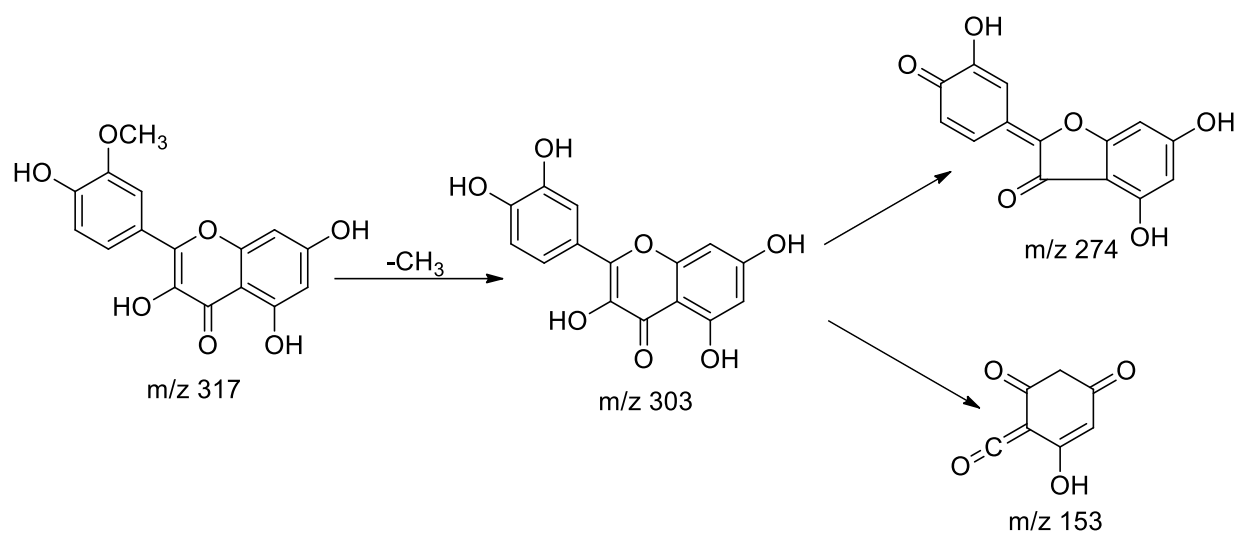


Figure S16 Fragmentation pattern of isorhamnetin

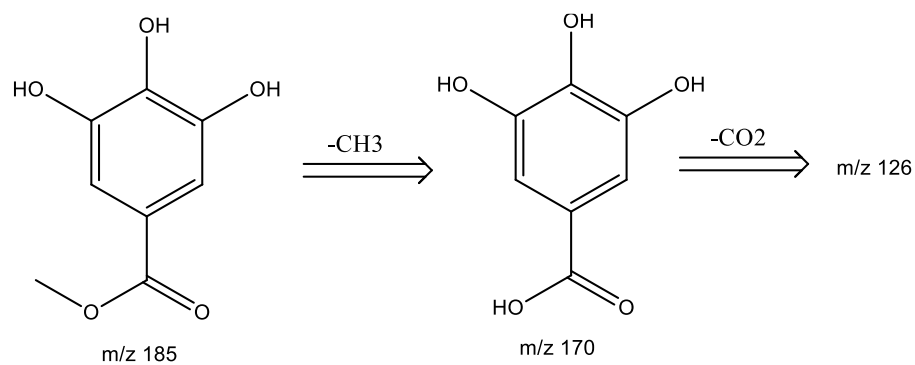


Figure S17 Fragmentation pattern of methyl gallate