

Supplementary

Synthesis and Biological Activity Evaluation of Novel 5-Methyl-7-Phenyl-3*H*-Thiazolo[4,5-*b*]Pyridin-2-Ones

Andrii Lozynskyi ¹, Yulian Konechnyi ², Julia Senkiv ³, Ihor Yushyn ¹, Dmytro Khylyuk ⁴, Olexandr Karpenko ⁵, Yulia Shepeta ⁶ and Roman Lesyk ^{1,7,*}

¹ Department of Pharmaceutical, Organic and Bioorganic Chemistry, Danylo Halytsky Lviv National Medical University, 69 Pekarska, 79010 Lviv, Ukraine; lozynskyiandrii@gmail.com (A.L.);

ihor.yushyn@gmail.com (I.Y.)

² Department of Microbiology, Danylo Halytsky Lviv National Medical University, 69 Pekarska, 79010 Lviv, Ukraine; yuliankonechnyi@gmail.com

³ Institute of Cell Biology, NAS of Ukraine, 14/16 Drahomanova, 79005, Lviv, Ukraine; yu.senkiv@gmail.com

⁴ Department of Organic Chemistry, Medical University of Lublin, Aleje Racławickie 1, 20-059 Lublin, Poland; dmytrokhylyuk@gmail.com

⁵ Enamine Ltd., 23 Alexandra Matrosova, 01103 Kyiv, Ukraine; karalexander@gmail.com

⁶ Department of Pharmaceutical Chemistry, National Pirogov Memorial Medical University, 56 Pirogov, 21018 Vinnytsya, Ukraine; shepeta.yulia@gmail.com

⁷ Department of Biotechnology and Cell Biology, Medical College, University of Information Technology and Management in Rzeszow, Sucharskiego 2, 35-225 Rzeszow, Poland

* Correspondence: dr_r_lesyk@org.lviv.net; Tel.: +38-032-275-5966

Table of Contents

Copies of ^1H , ^{13}C -NMR and LC-MS spectra of compounds **3a-g**

S1–S18

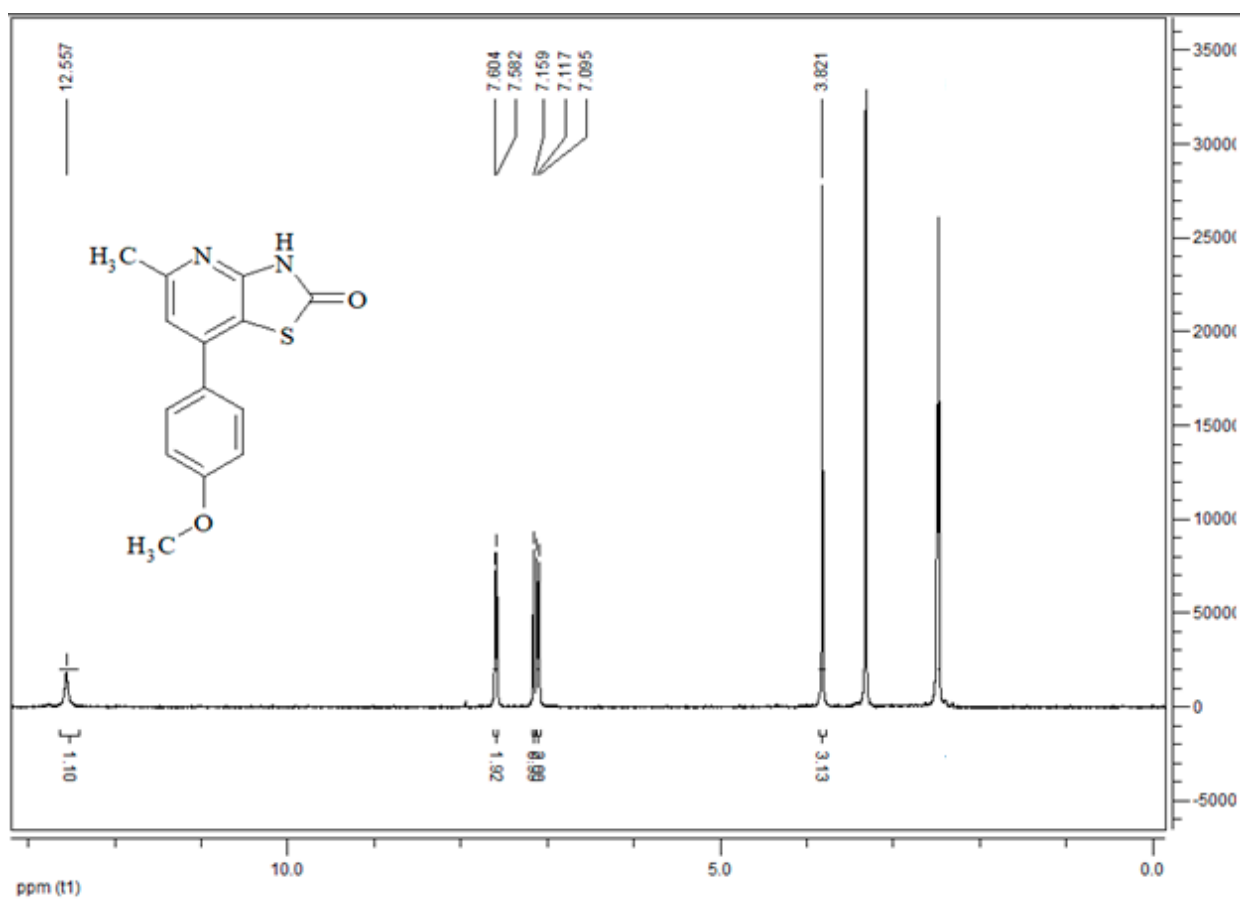


Figure S1. ^1H NMR spectrum **3a**.

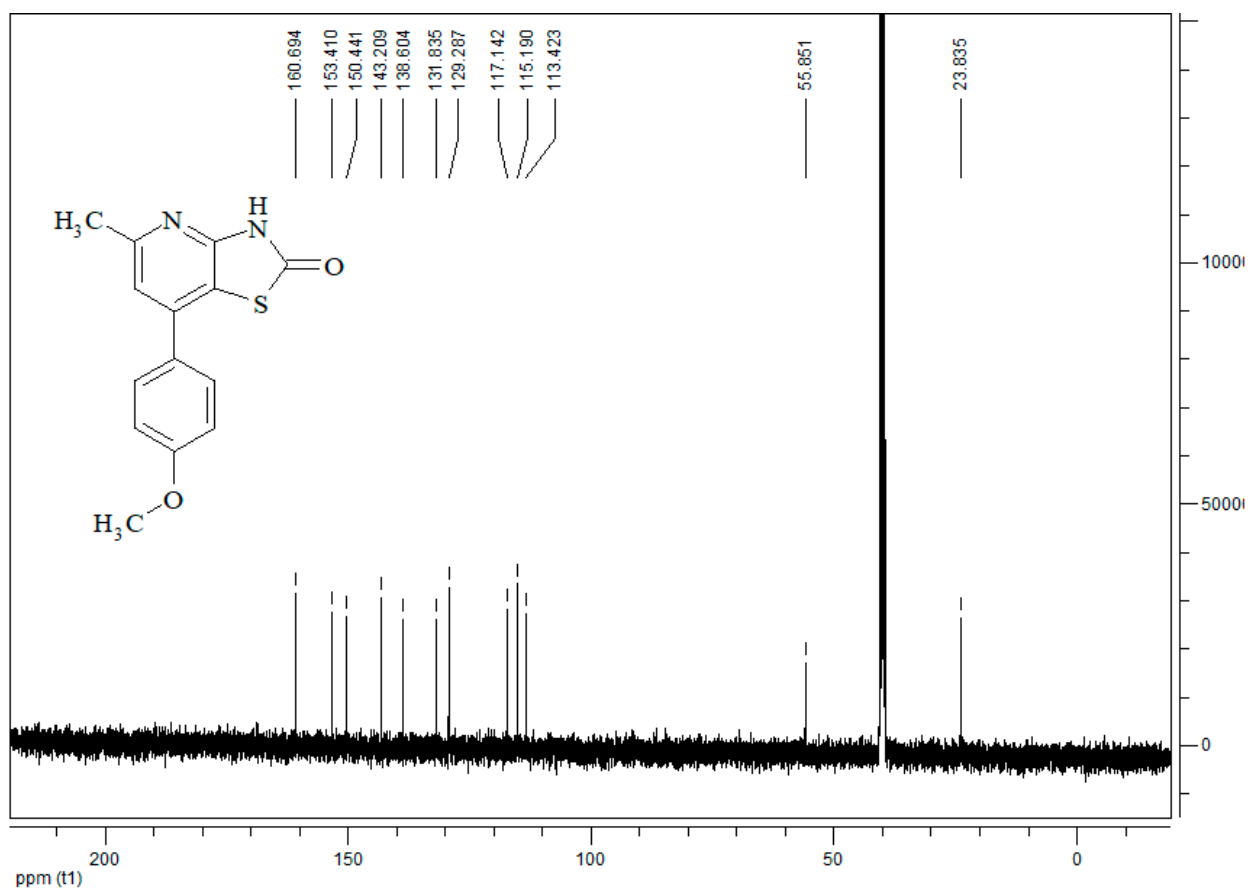


Figure S2. ¹³C NMR spectrum 3a.

Mol Wt
Exact Mass

#	Time	Area%
1	0.888	4.95
2	1.240	95.05

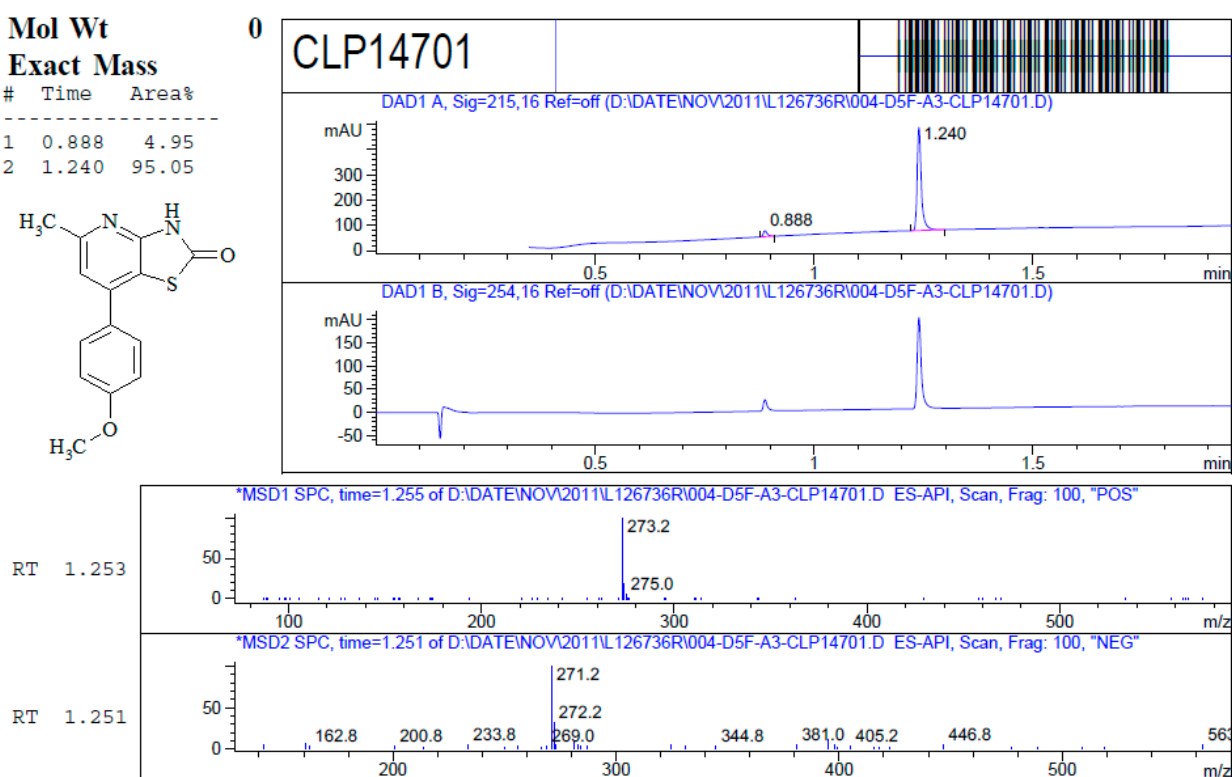
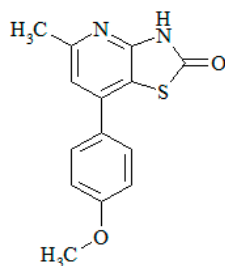


Figure S3. LC-MS spectrum 3a.

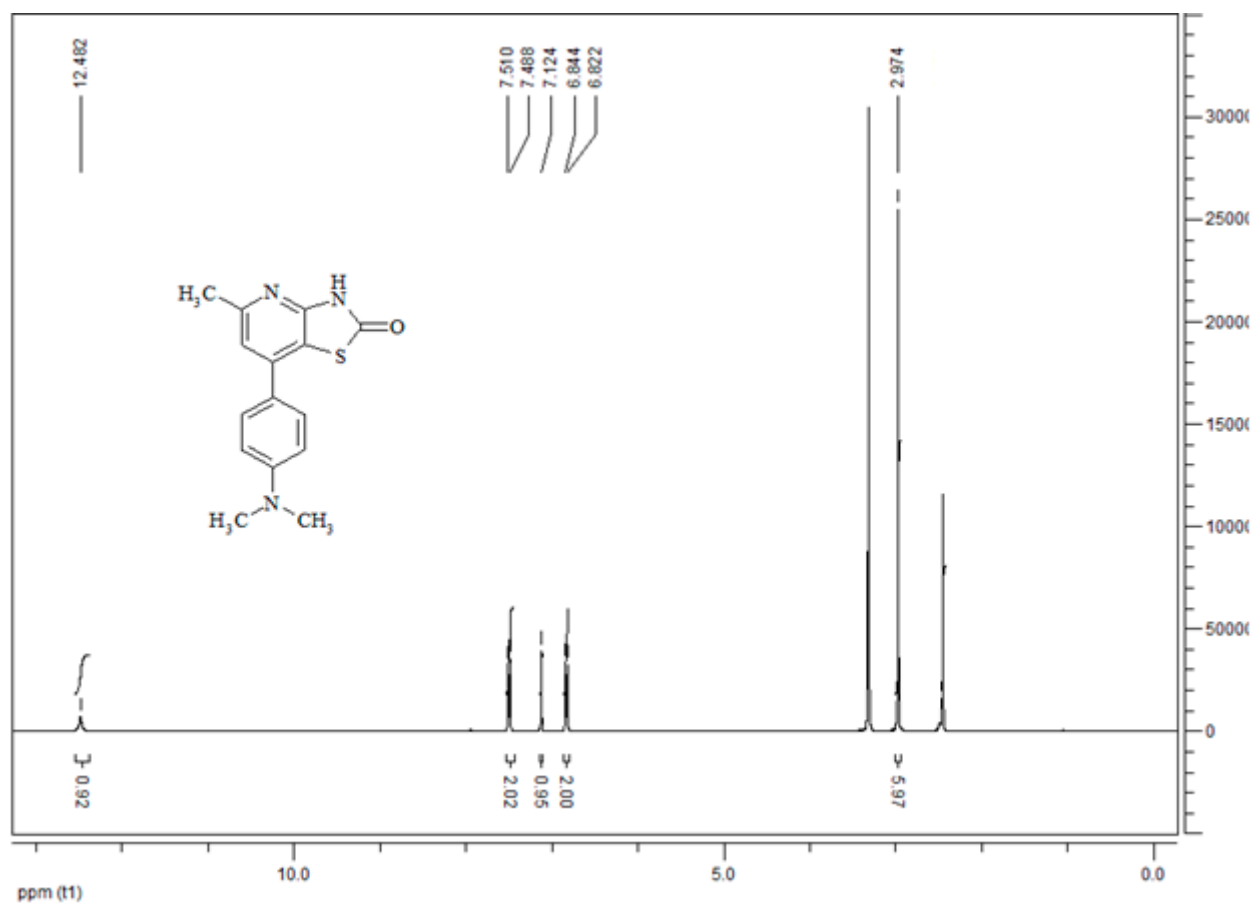


Figure S4. ¹H NMR spectrum 3b.

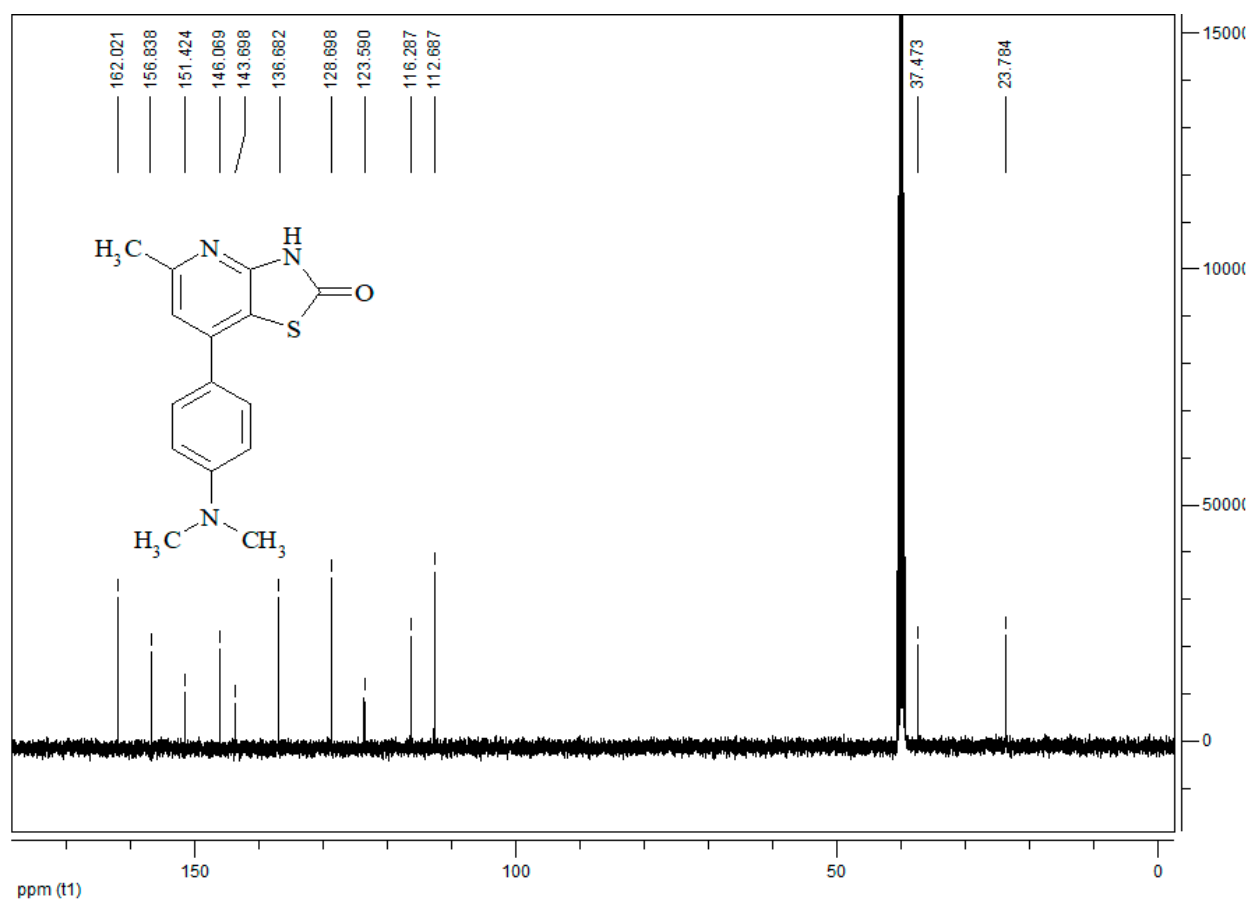


Figure S5. ^{13}C NMR spectrum 3b.

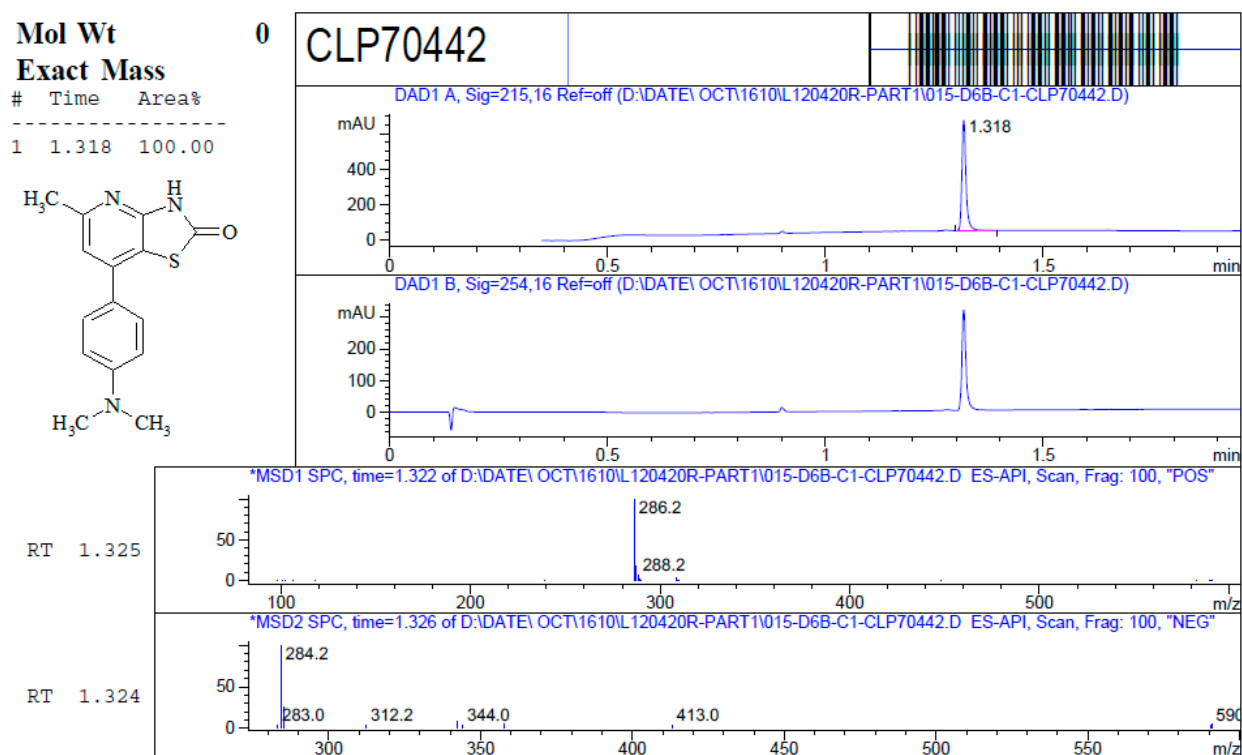


Figure S6. LC-MS spectrum 3b.

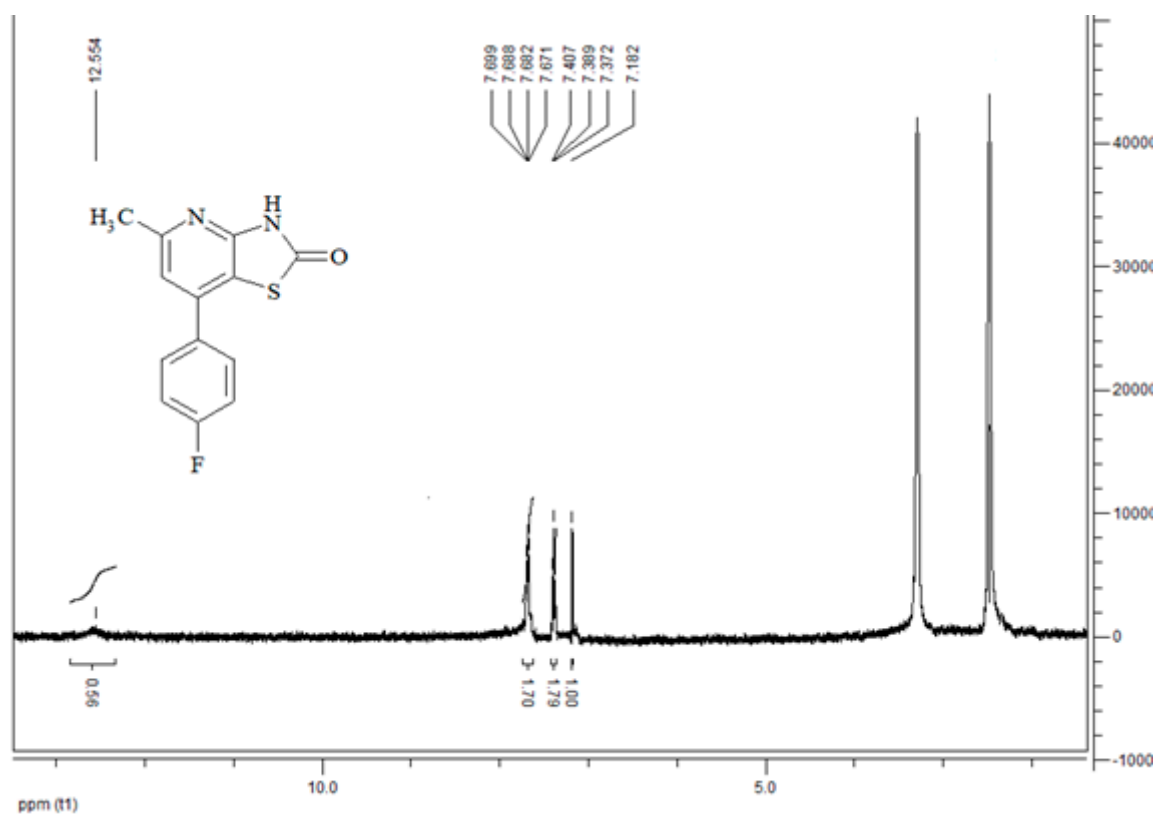


Figure S7. ^1H NMR spectrum 3c.

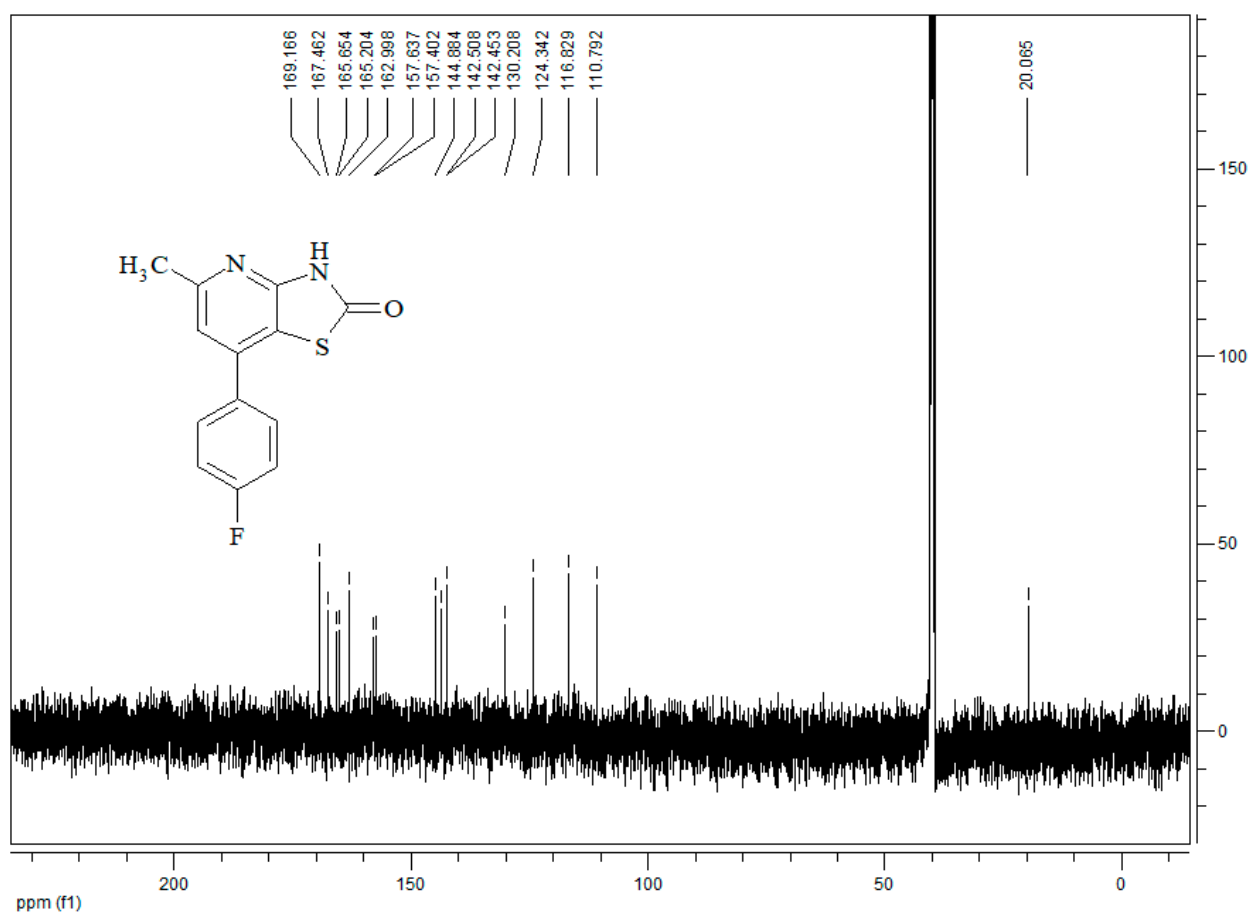


Figure S8. ¹³C NMR spectrum 3c.

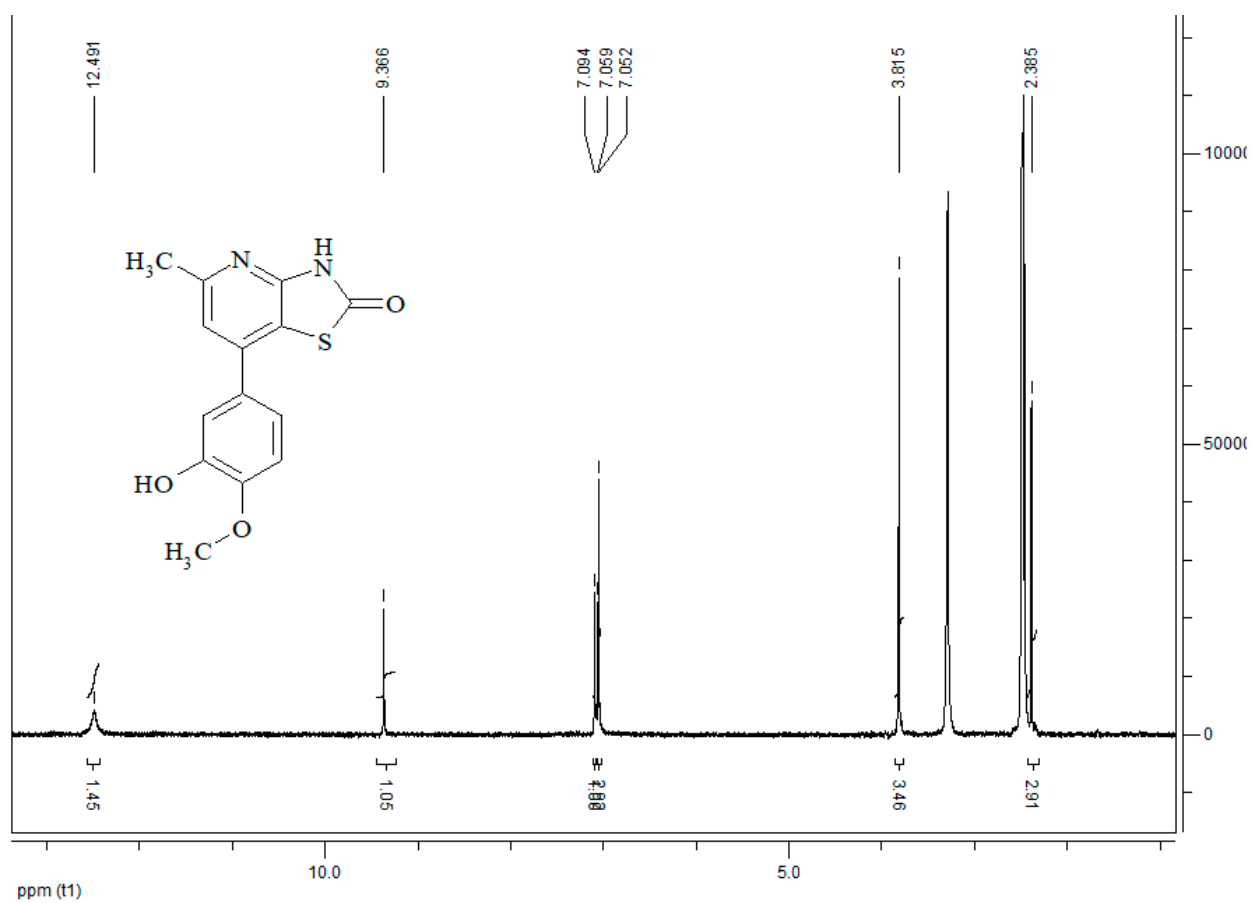


Figure S9. ^1H NMR spectrum 3d.

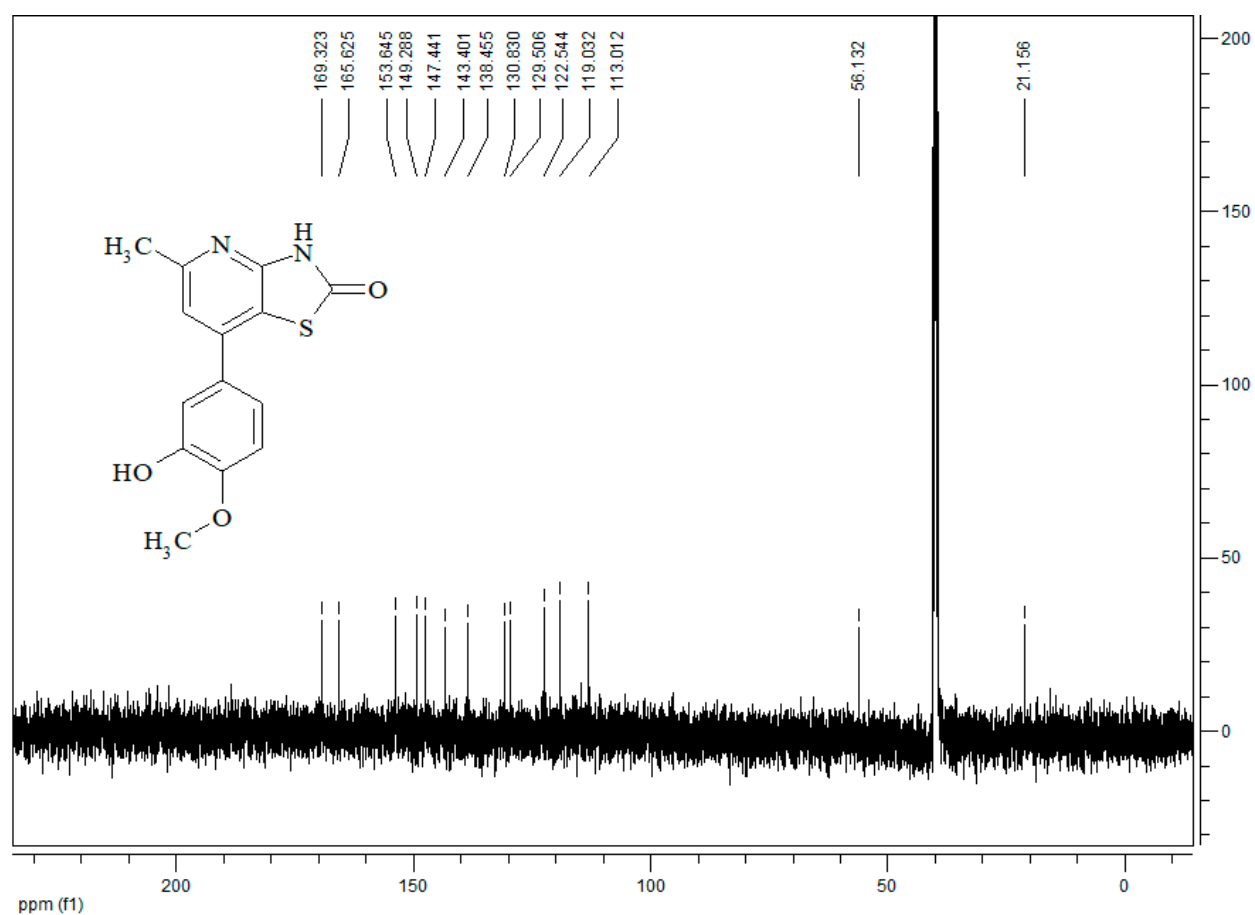


Figure S10. ^{13}C NMR spectrum 3d.

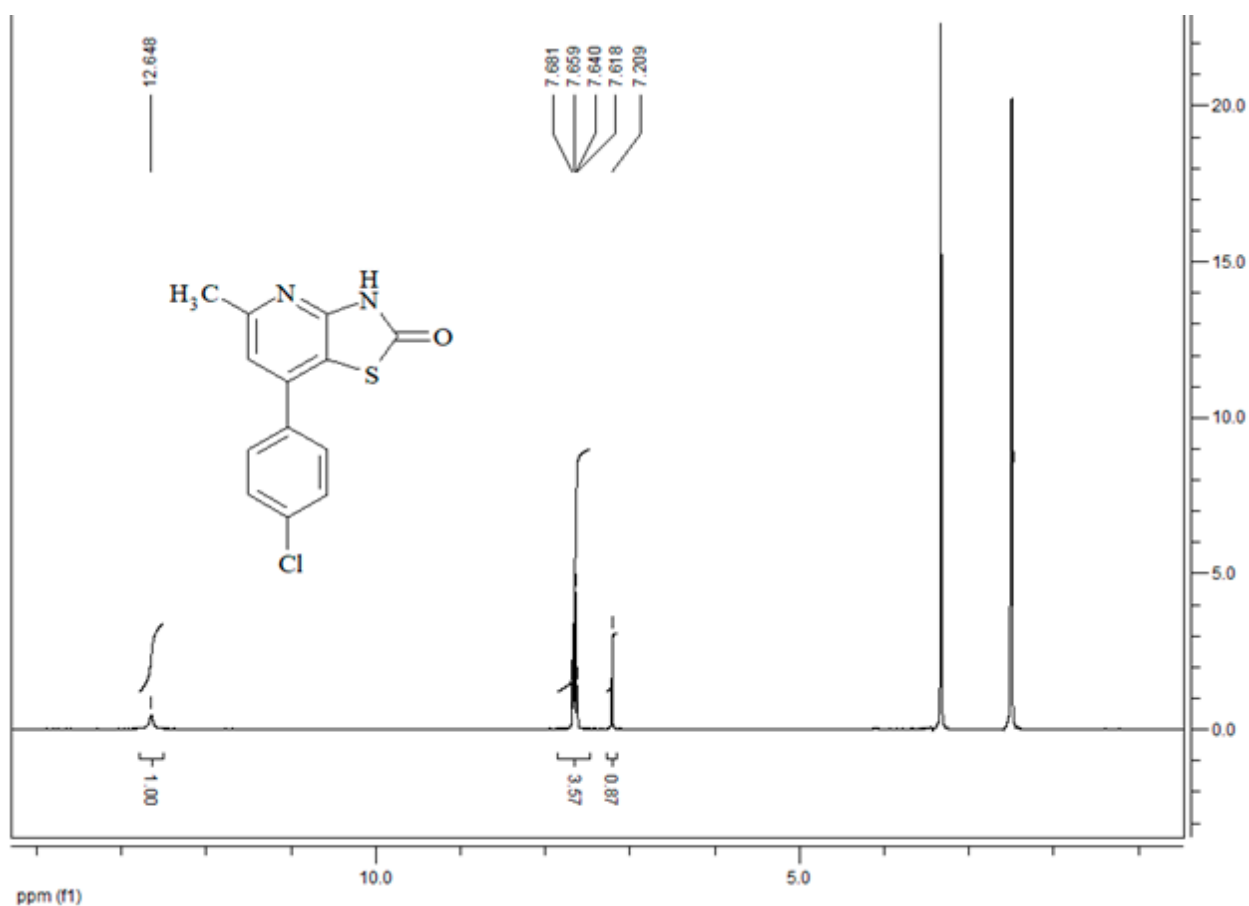


Figure S11. ¹H NMR spectrum 3e.

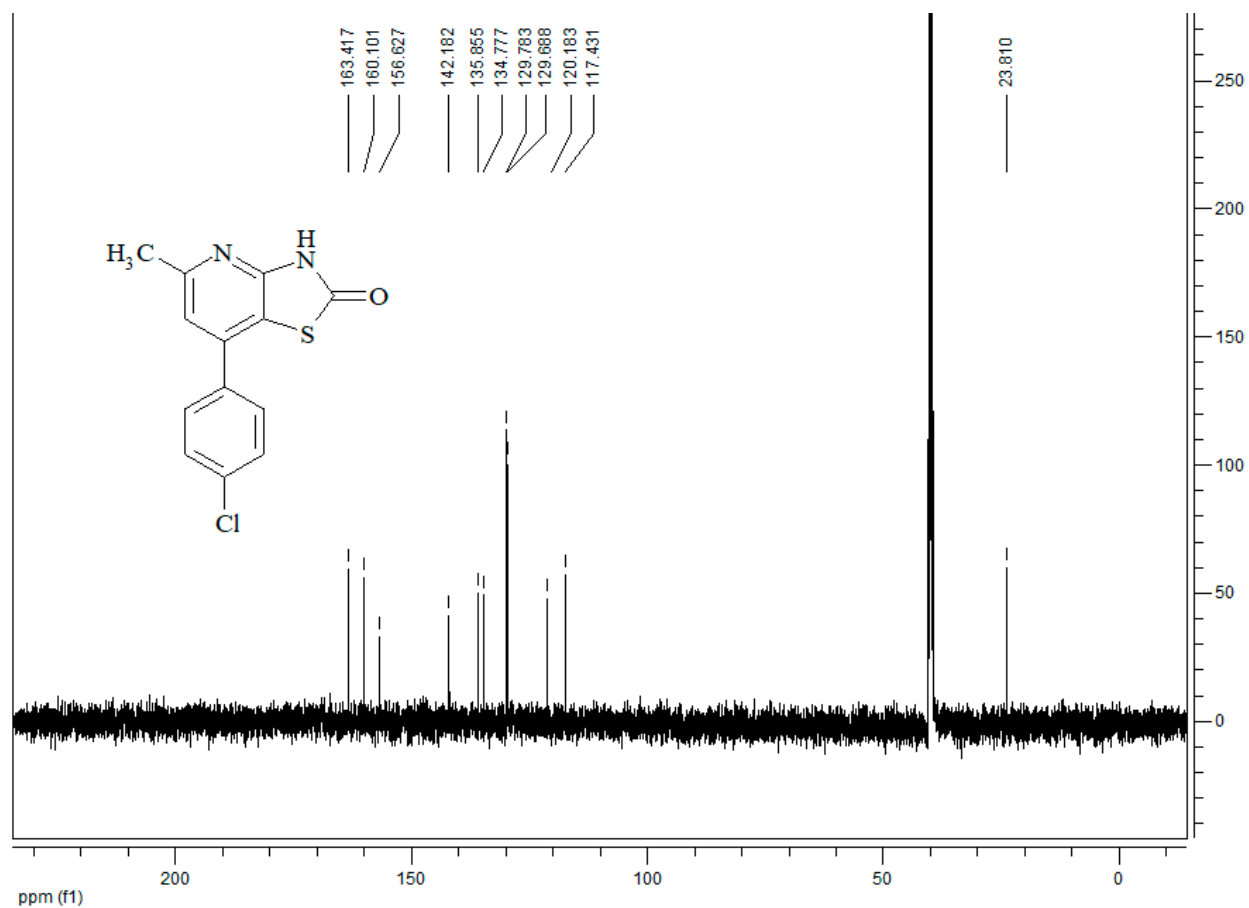
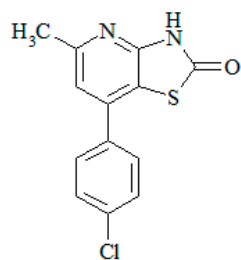


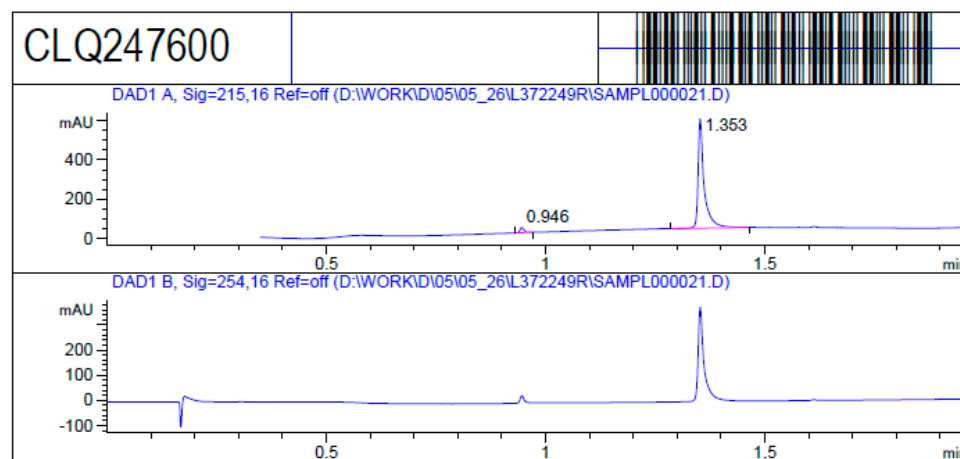
Figure S12. ¹³C NMR spectrum 3e.

Mol Wt
Exact Mass

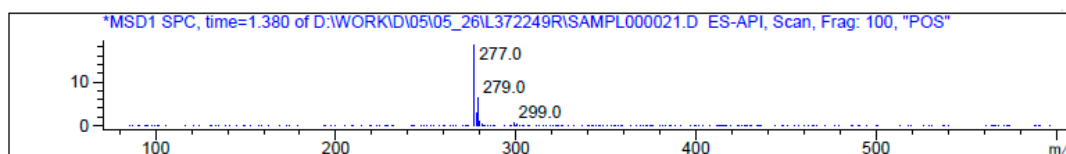
#	Time	Area%
1	0.946	2.99
2	1.353	97.01



0 CLQ247600



RT 1.378



RT 1.376

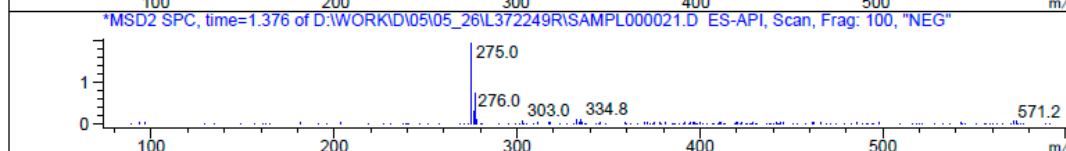


Figure S13. LC-MS spectrum 3e.

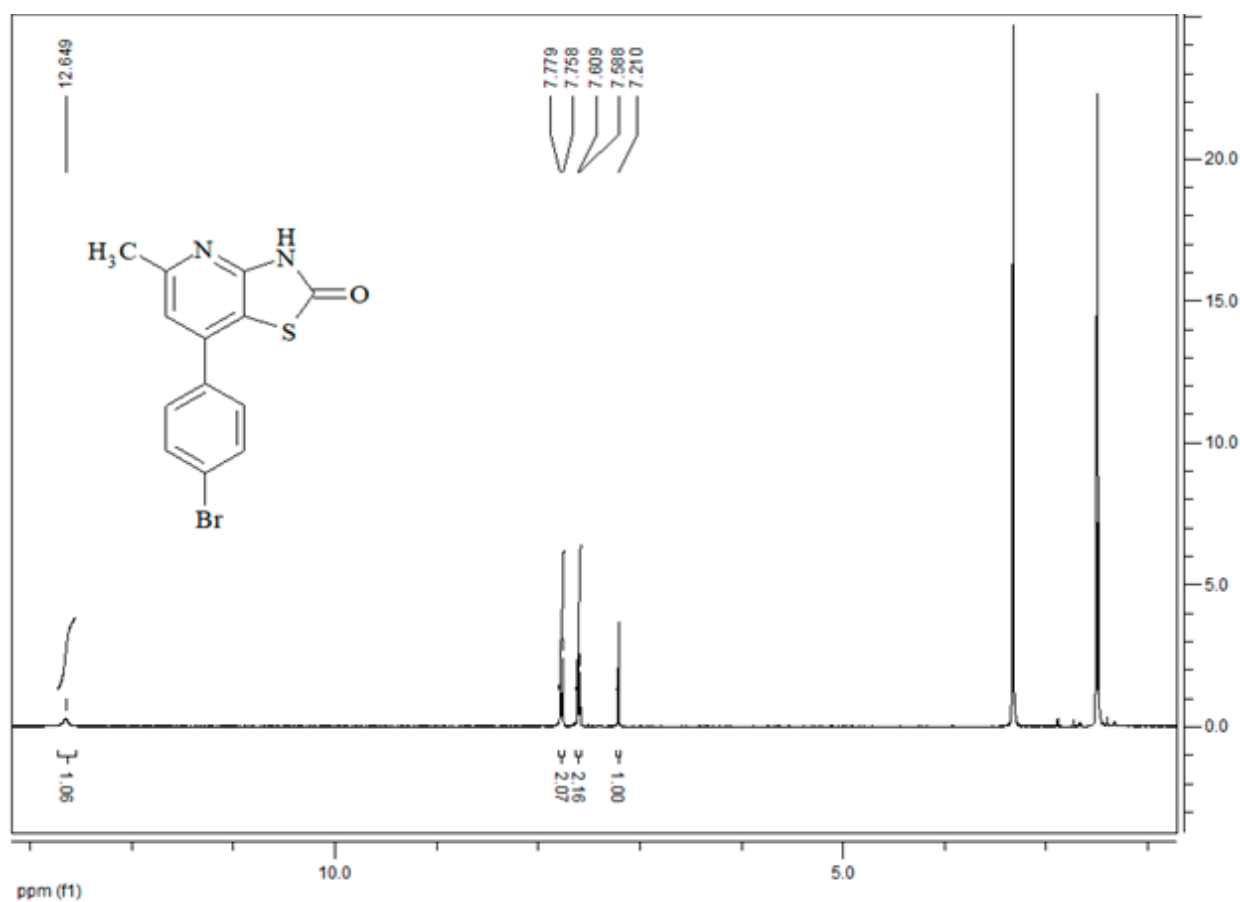


Figure S14. ¹H NMR spectrum 3f.

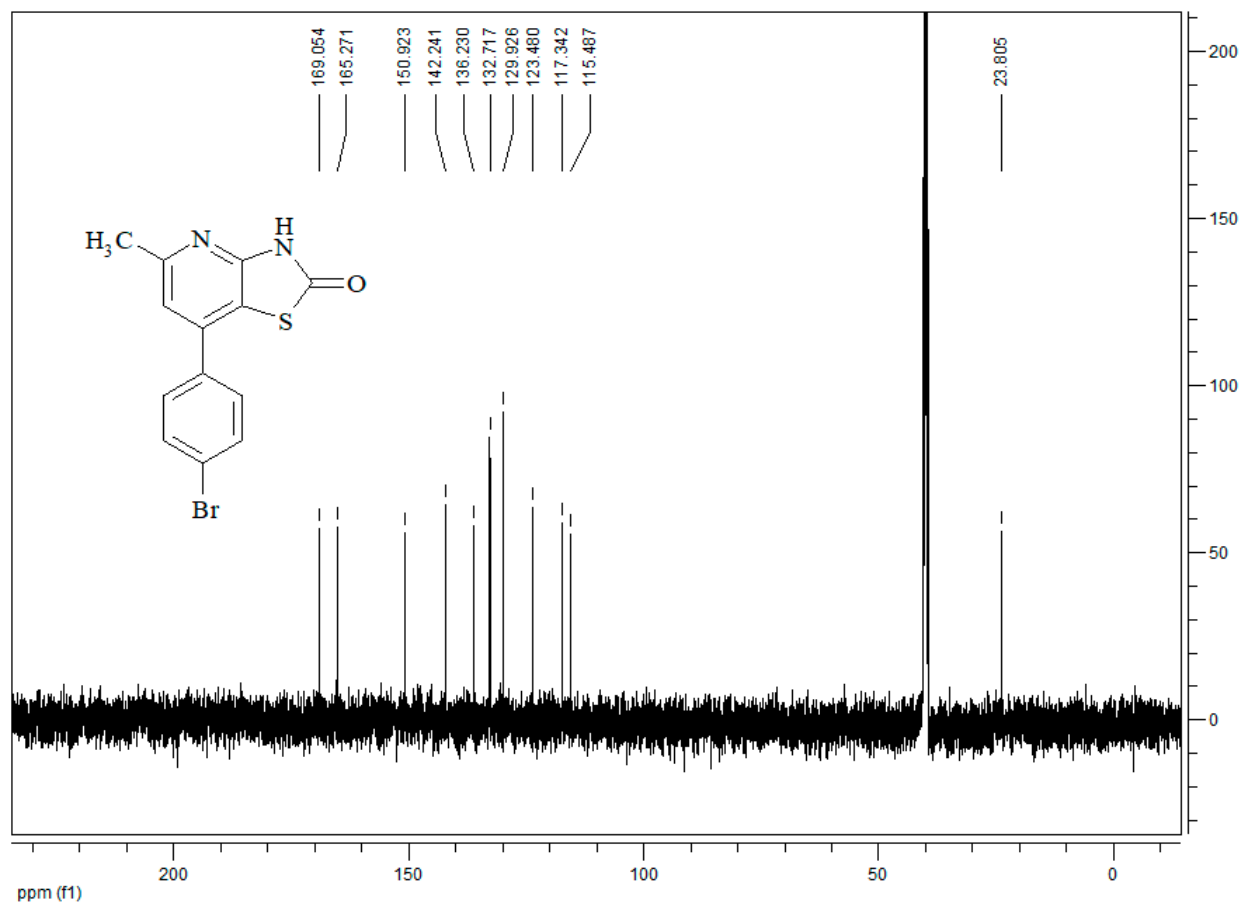
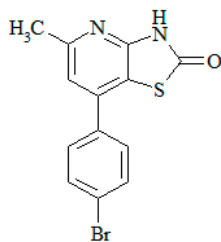


Figure S15. ¹³C NMR spectrum 3f.

Mol Wt
Exact Mass

#	Time	Area%
1	1.379	98.21
2	1.644	1.79



RT 1.405

RT 1.403

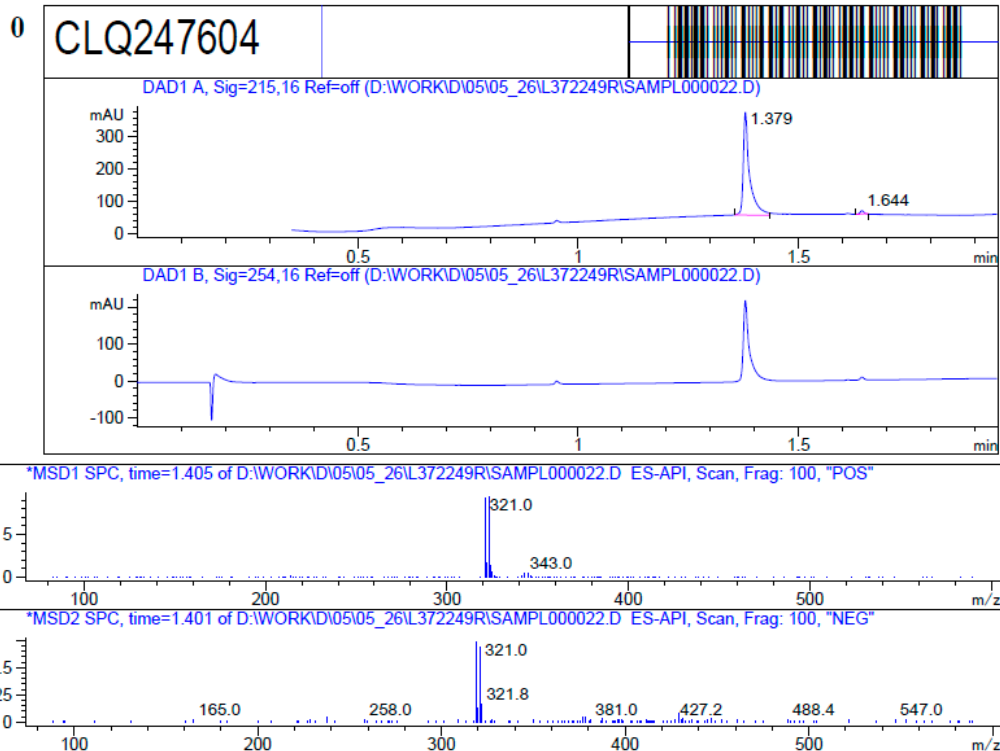


Figure S16. LC-MS spectrum 3f.

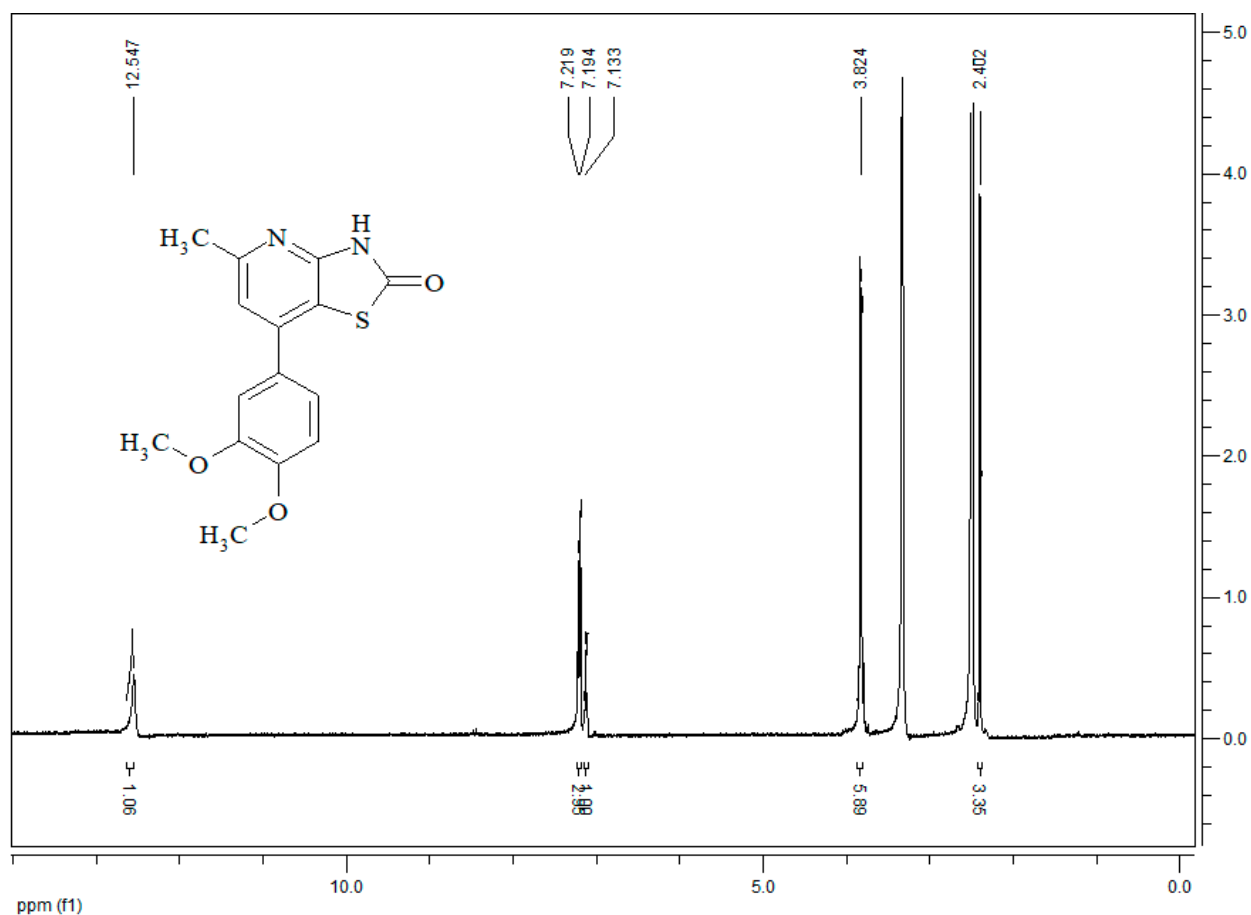


Figure S17. ¹H NMR spectrum 3g.

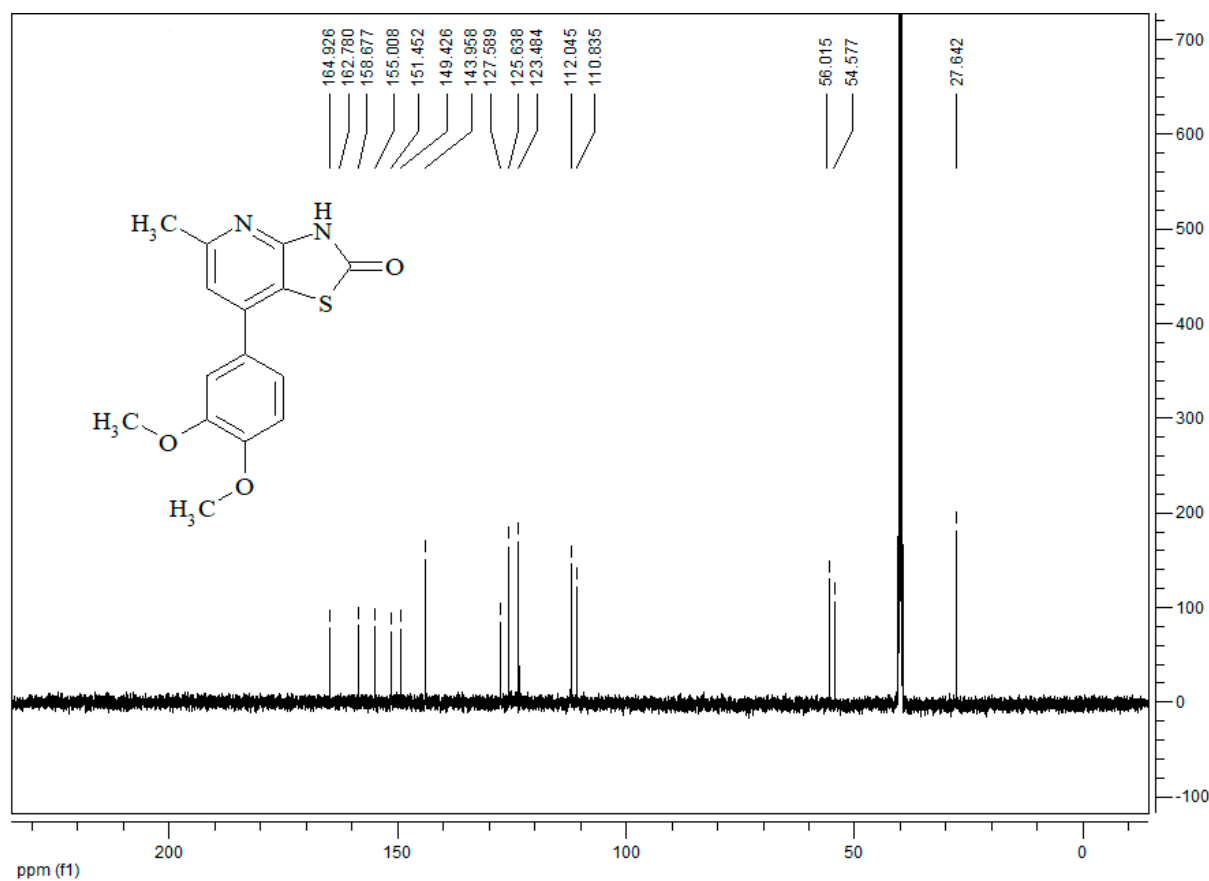


Figure S18. ¹³C NMR spectrum 3g.