

SUPPLEMENTARY MATERIALS

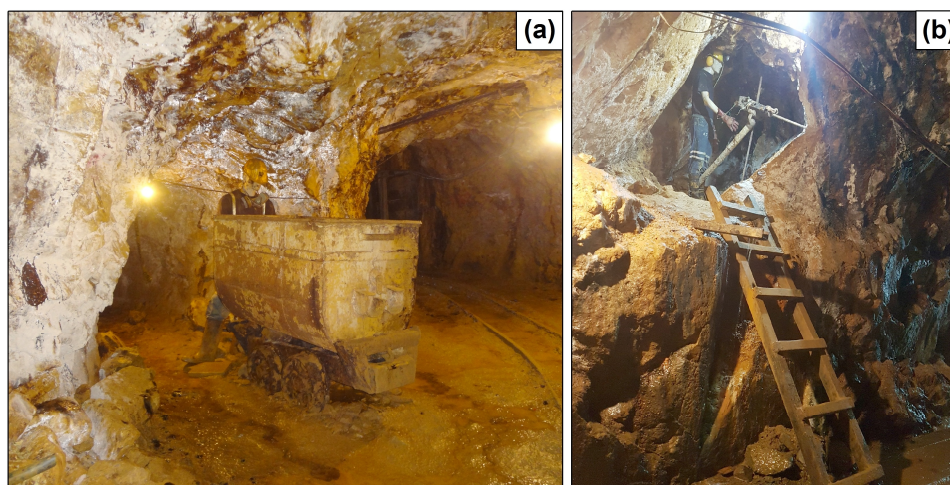


Figure S1. Services in “El Sexmo” Tourist Mine. (a,b) Underground tour.

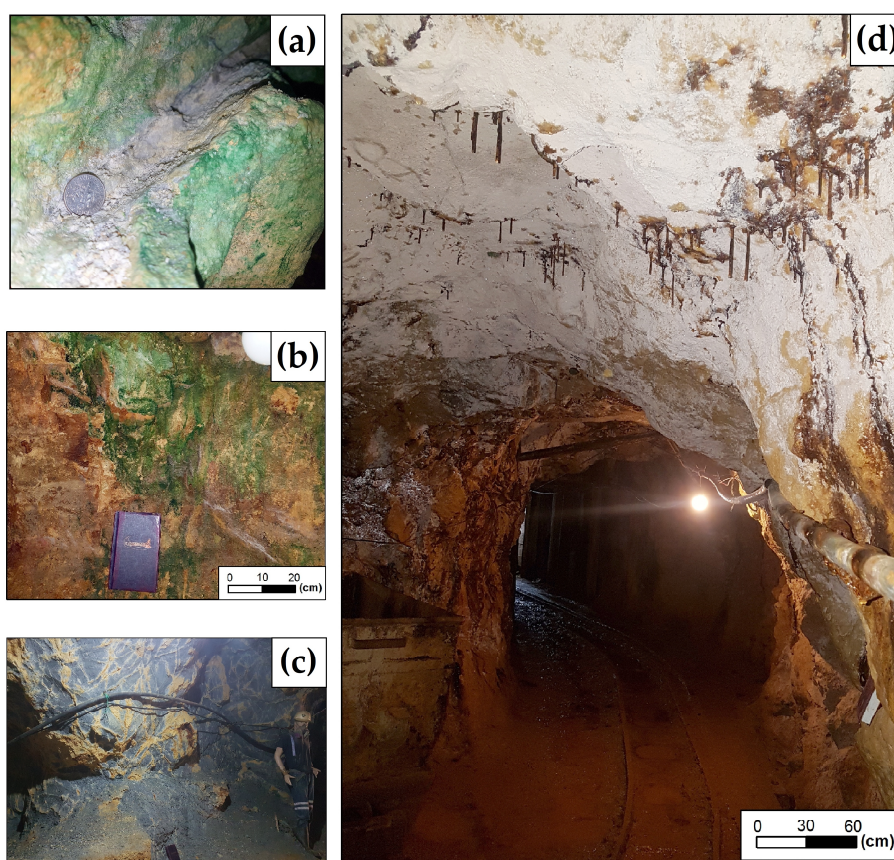


Figure S2. Underground tour. (a) Quartz vein with copper sulphides lixiviated to copper sulphates (green hue). (b) Rock massif with presence lixiviation of oxides and hydroxides of iron and copper sulphides. (c) Wall rock (andesite) with fractures. (d) Mine tunnel with stalactites (iron oxides and hydroxides stalactites).

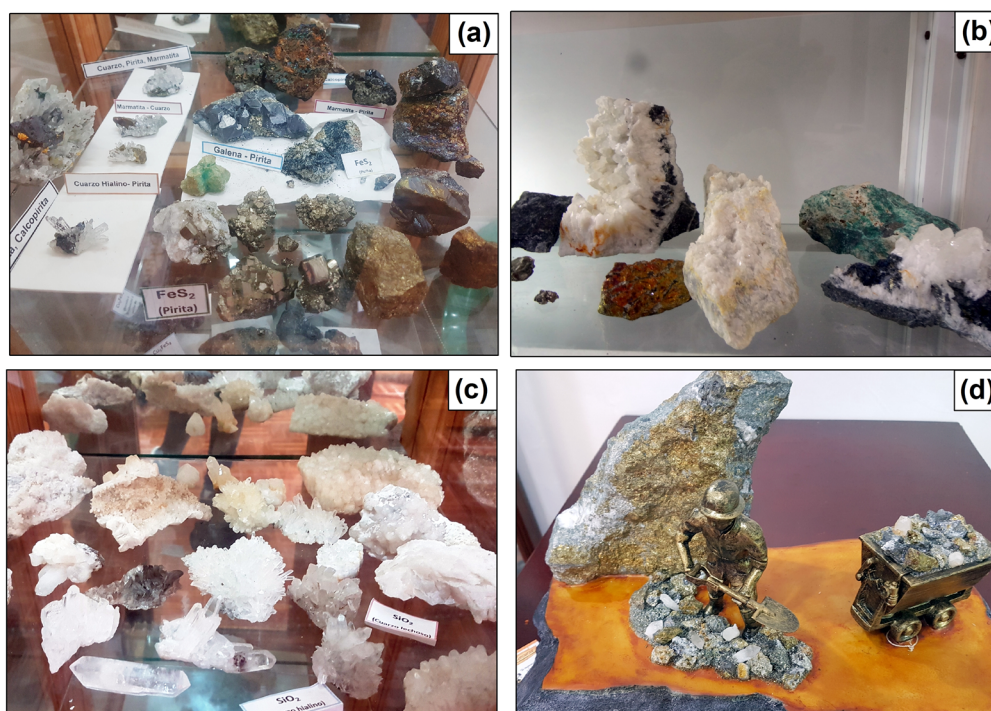


Figure S3. Superficial tourist complex. (a,b,c) Special exhibitions and (d) Gift Shop.



Figure S4. : Superficial tourist complex. (a) Coffee Shop, (b) Viewpoint and (c) Hanging bridge.