

## Supplementary Material of

Upregulation of sarcolemmal hemichannels and inflammatory transcripts with neuromuscular junction instability during lower limb unloading in humans

Giuseppe Sirago<sup>1,\*</sup>; Julián Candia<sup>6</sup>; Martino V. Franchi<sup>1</sup>; Fabio Sarto<sup>1</sup>; Elena Monti<sup>1</sup>; Luana Toniolo<sup>1</sup>; Carlo Reggiani<sup>1,2</sup>; Emiliana Giacomello<sup>4</sup>; Sandra Zampieri<sup>1,3,5</sup>; Lisa M. Hartnell<sup>6</sup>; Giuseppe De Vito<sup>1,3</sup>; Marco Sandri<sup>1,3</sup>; Luigi Ferrucci<sup>6</sup> & Marco V. Narici<sup>1,2,3,\*</sup>

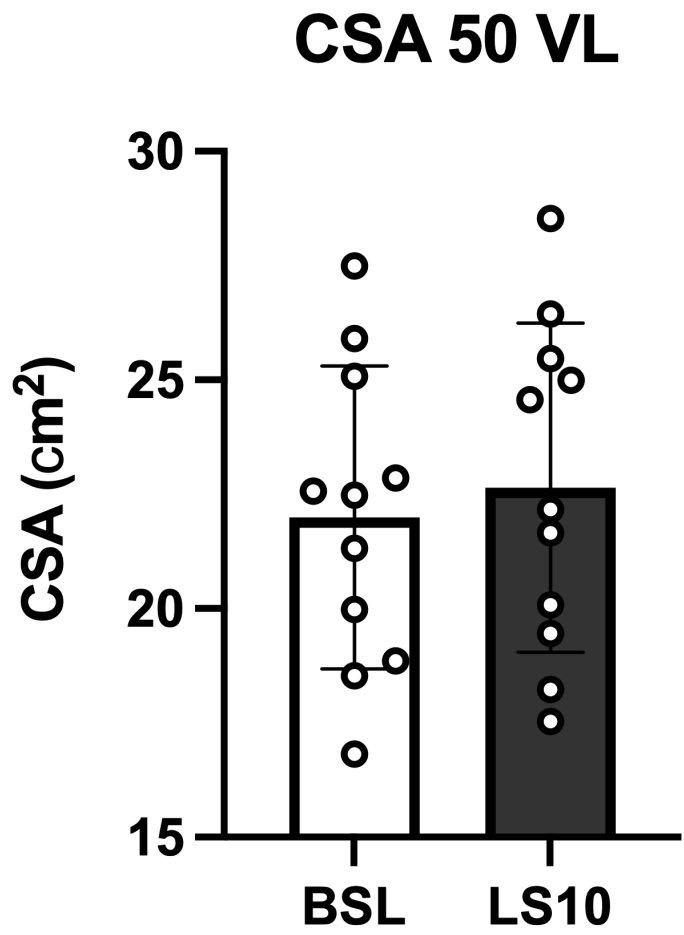
1. Department of Biomedical Sciences, University of Padova, Padova, 35131, Italy
2. Science and Research Center Koper, Institute for Kinesiology Research, Koper, 6000, Slovenia
3. CIR-MYO Myology Center, University of Padua, 35131, Italy
4. Department of Medicine, Surgery and Health Sciences, University of Trieste, Trieste, 34149, Italy
5. Department of Surgery, Oncology and Gastroenterology, University of Padova, Padova, 35124, Italy
6. Translational Gerontology Branch Longitudinal Studies Section, National Institute on Aging, Baltimore, MD 21224, USA

\*Dr Giuseppe Sirago: Department of Biomedical Sciences, University of Padova, Padova, 35131, Italy - **Email:** [giuseppesirago88@gmail.com](mailto:giuseppesirago88@gmail.com) - ORCID: <https://orcid.org/0000-0001-7005-8708>

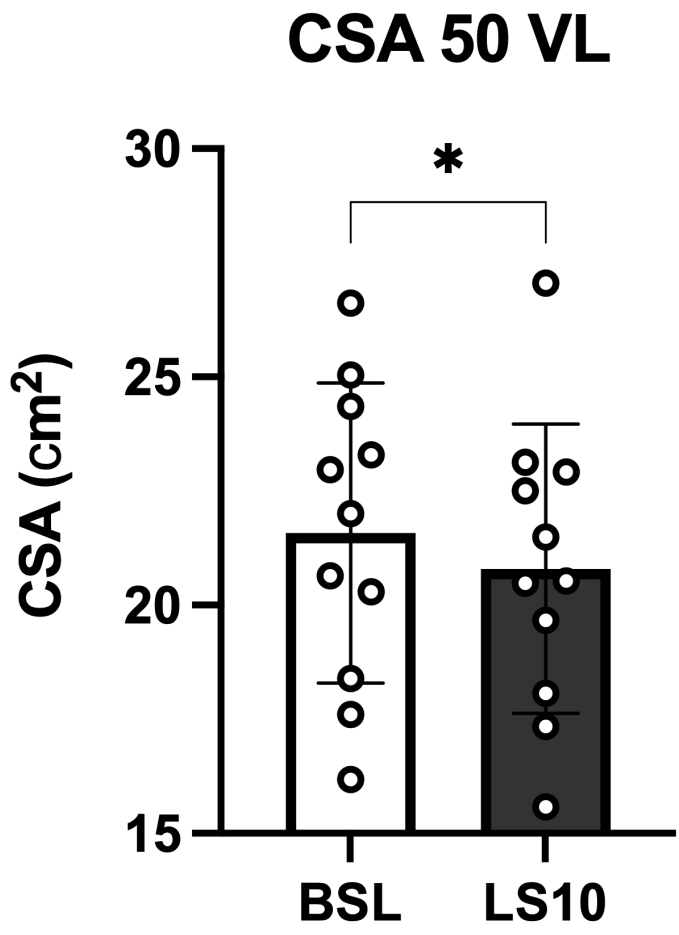
\*Prof. Marco V. Narici: Department of Biomedical Sciences, CIR-MYO Myology Centre, University of Padova, Padova, 35131, Italy - **Email:** [marco.narici@unipd.it](mailto:marco.narici@unipd.it) - ORCID: <https://orcid.org/0000-0003-0167-1845>

Figure S1

**A** Control Leg

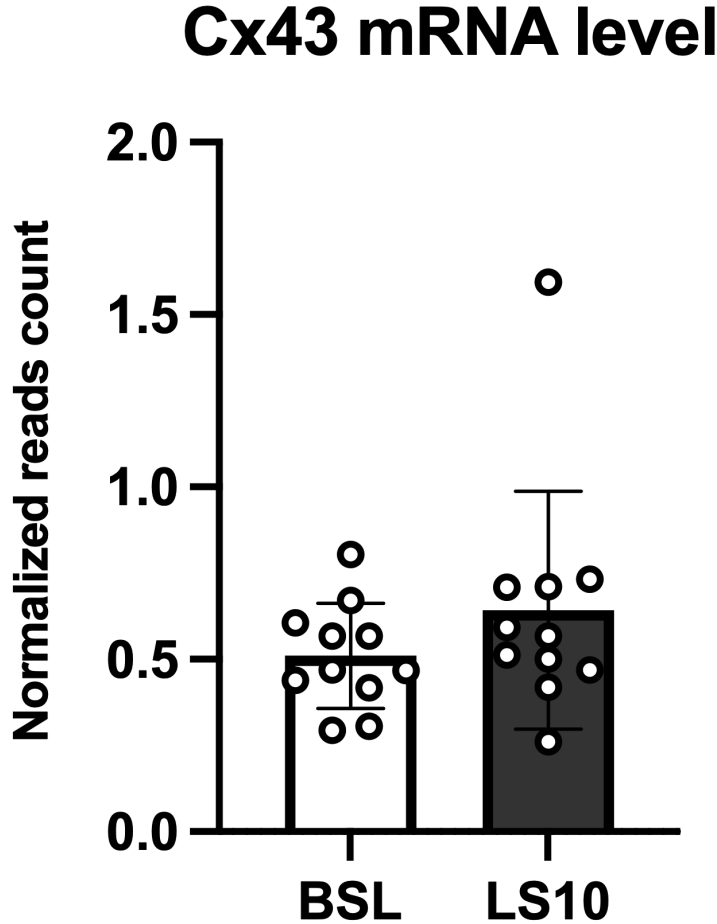


**B** Suspended Leg



## Figure S2

A



# B

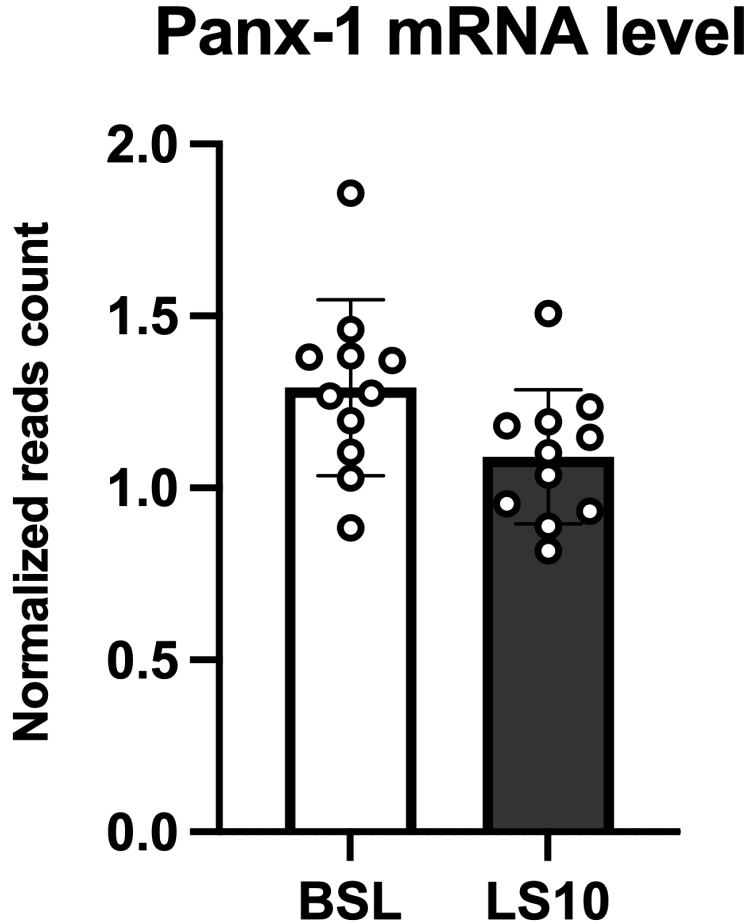
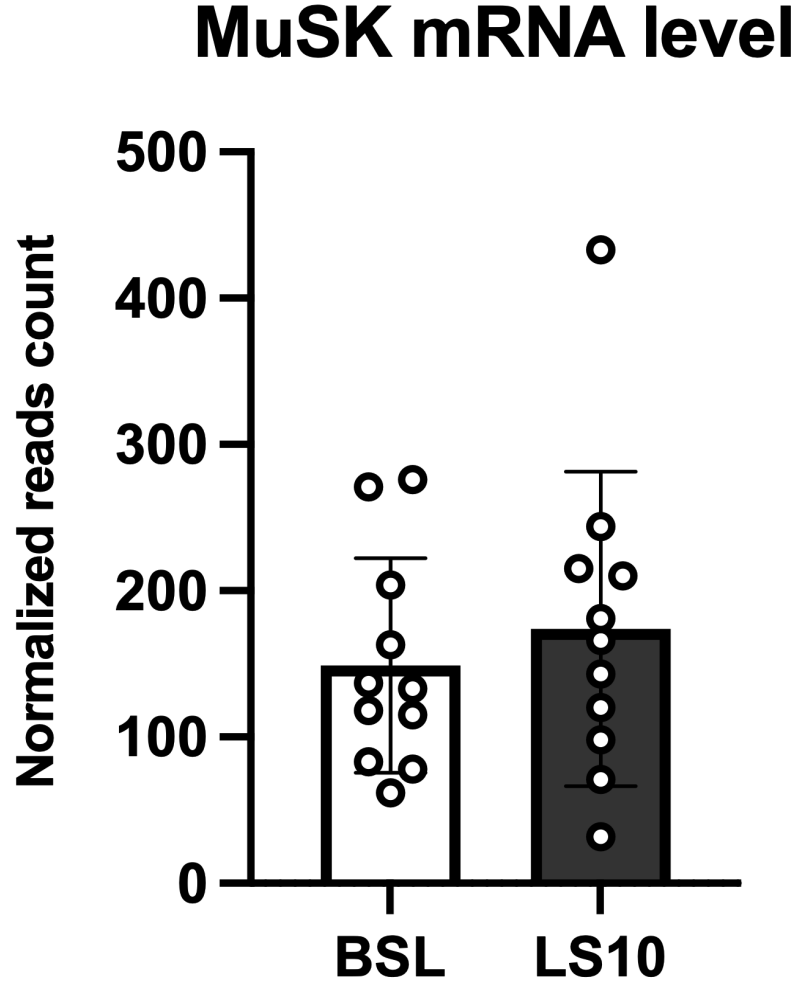


Figure S3

**A**



**B**

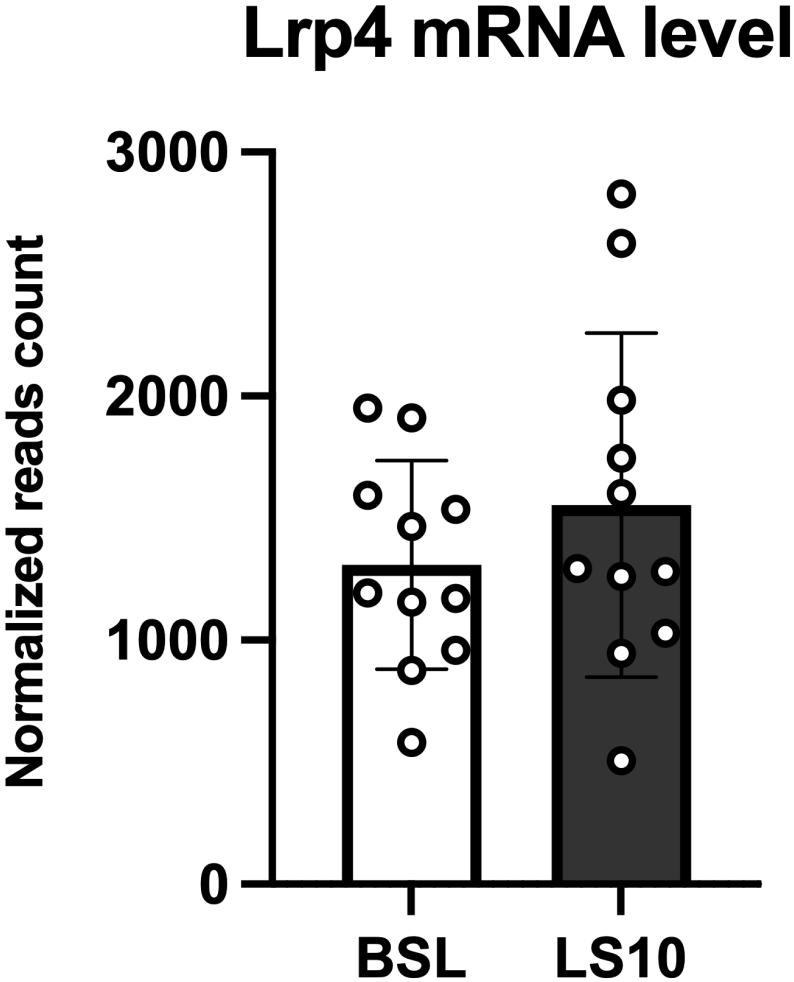
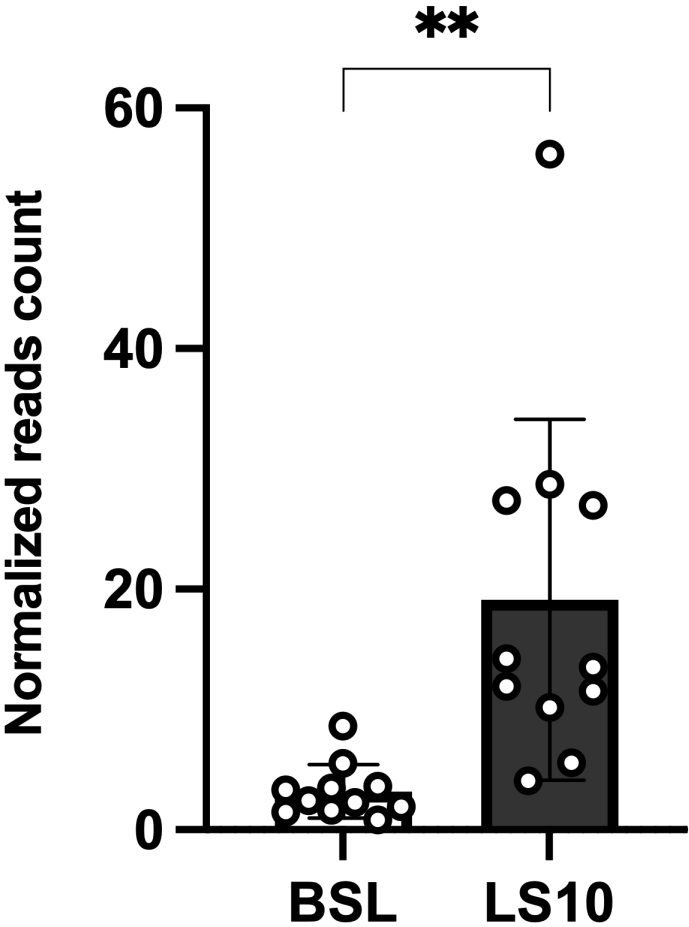


Figure S4

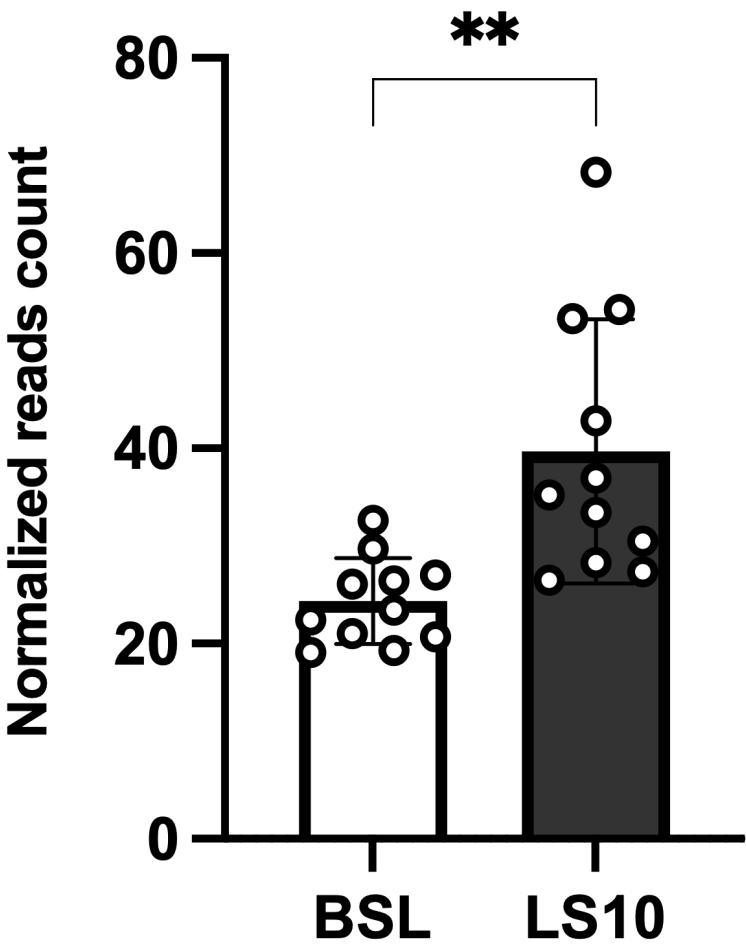
A

AChR  $\alpha$ 1 mRNA level



B

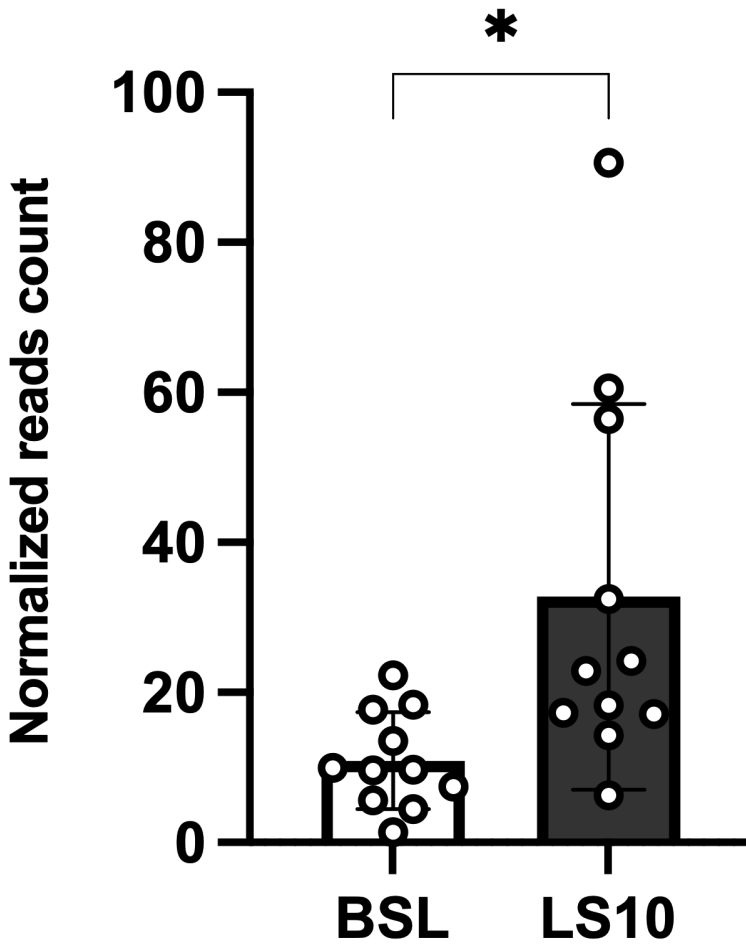
AChR  $\beta$ 1 mRNA level



## Figure S5

# A

## AChR $\delta$ mRNA level



# B

## AChR $\epsilon$ mRNA level

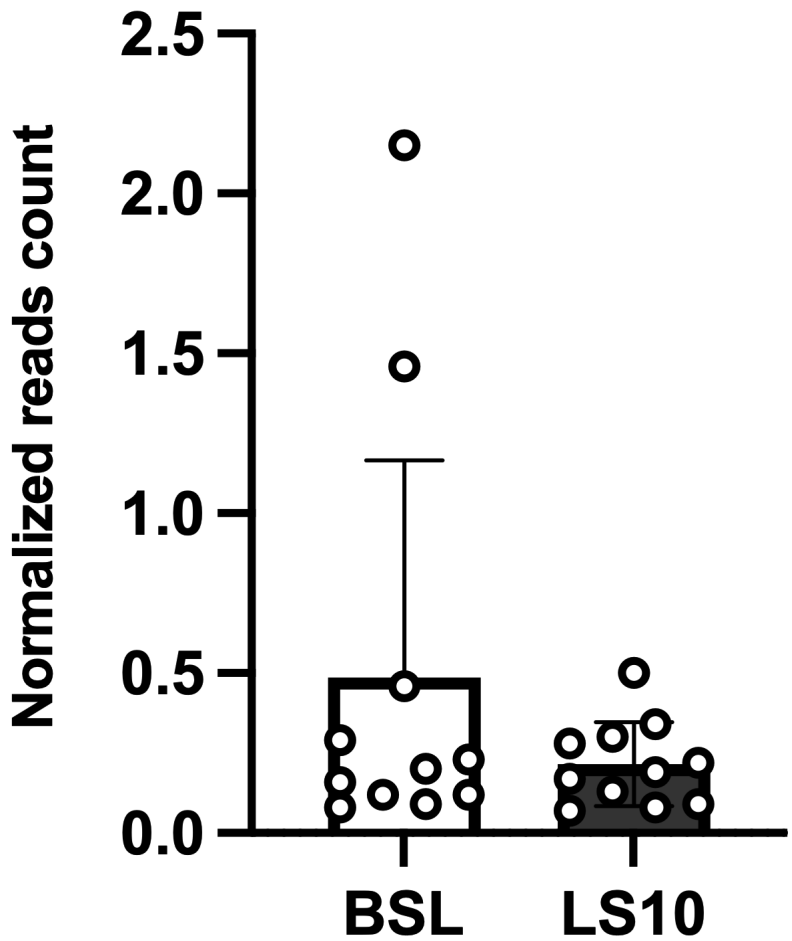
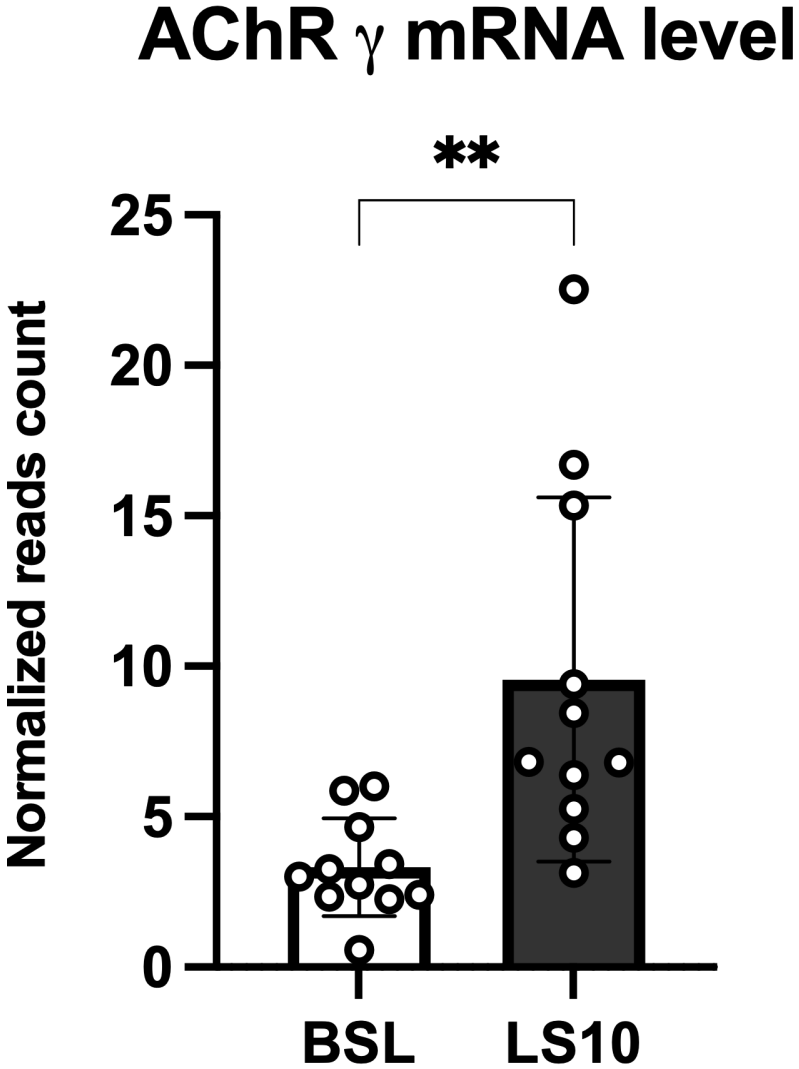
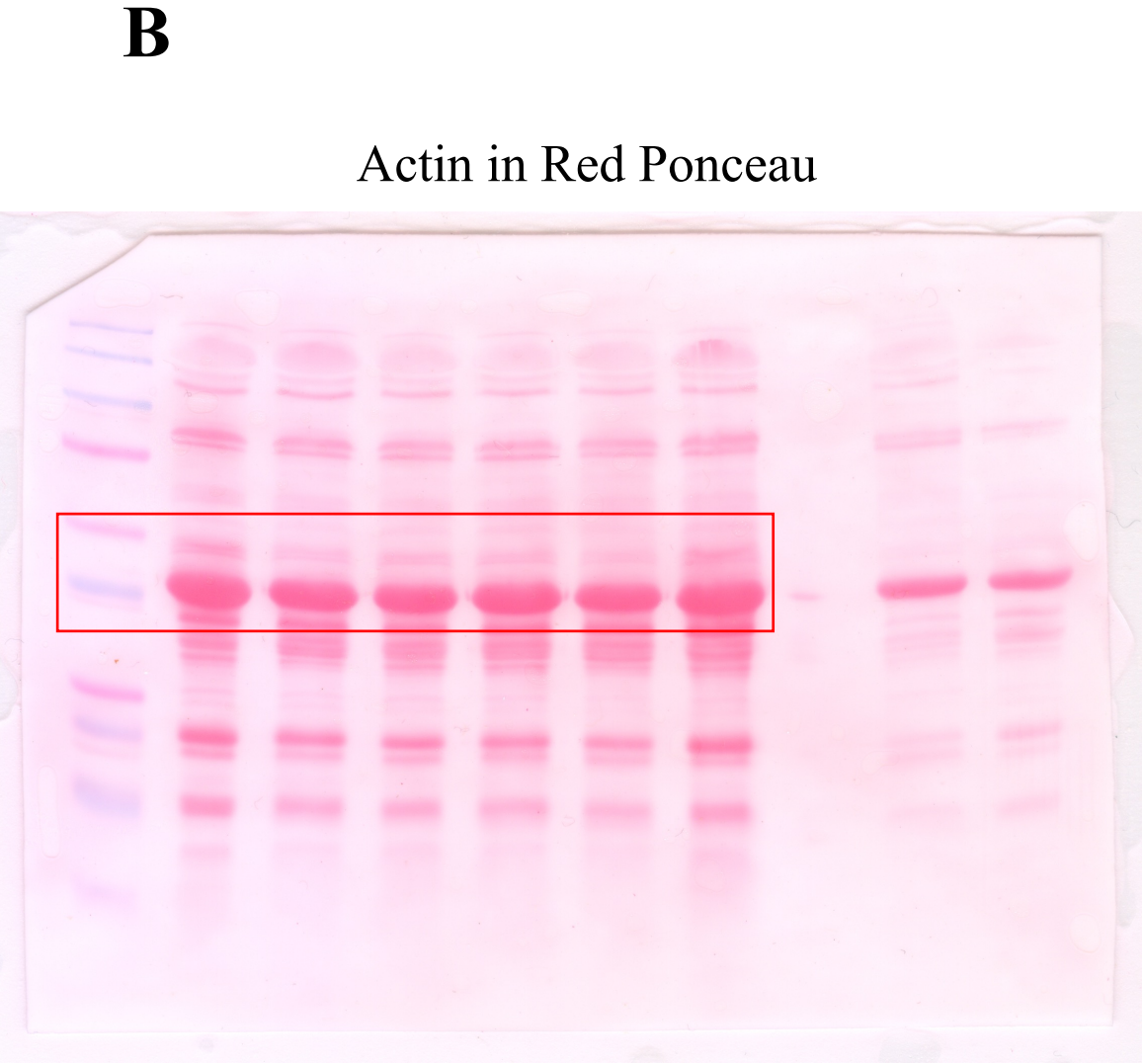
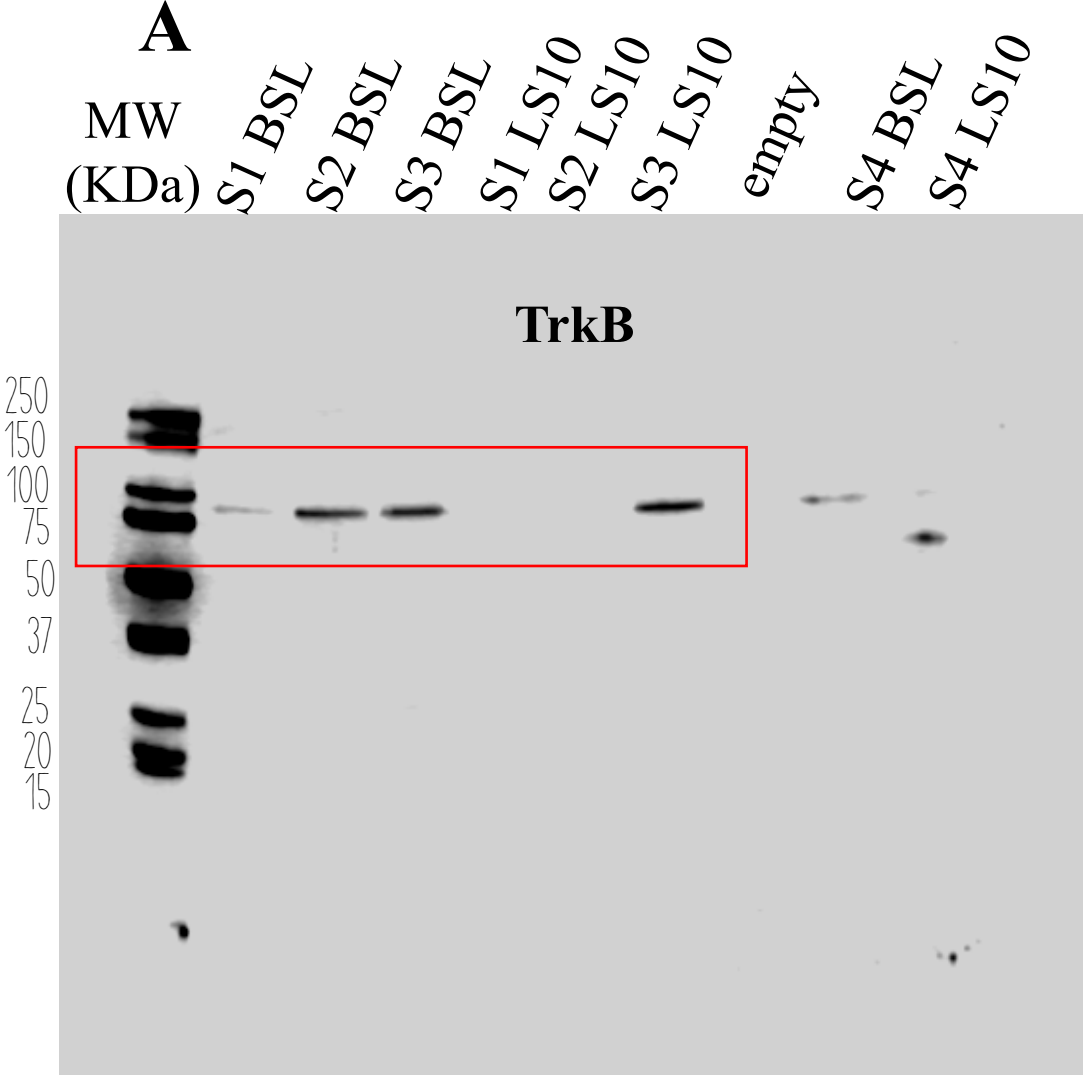


Figure S6

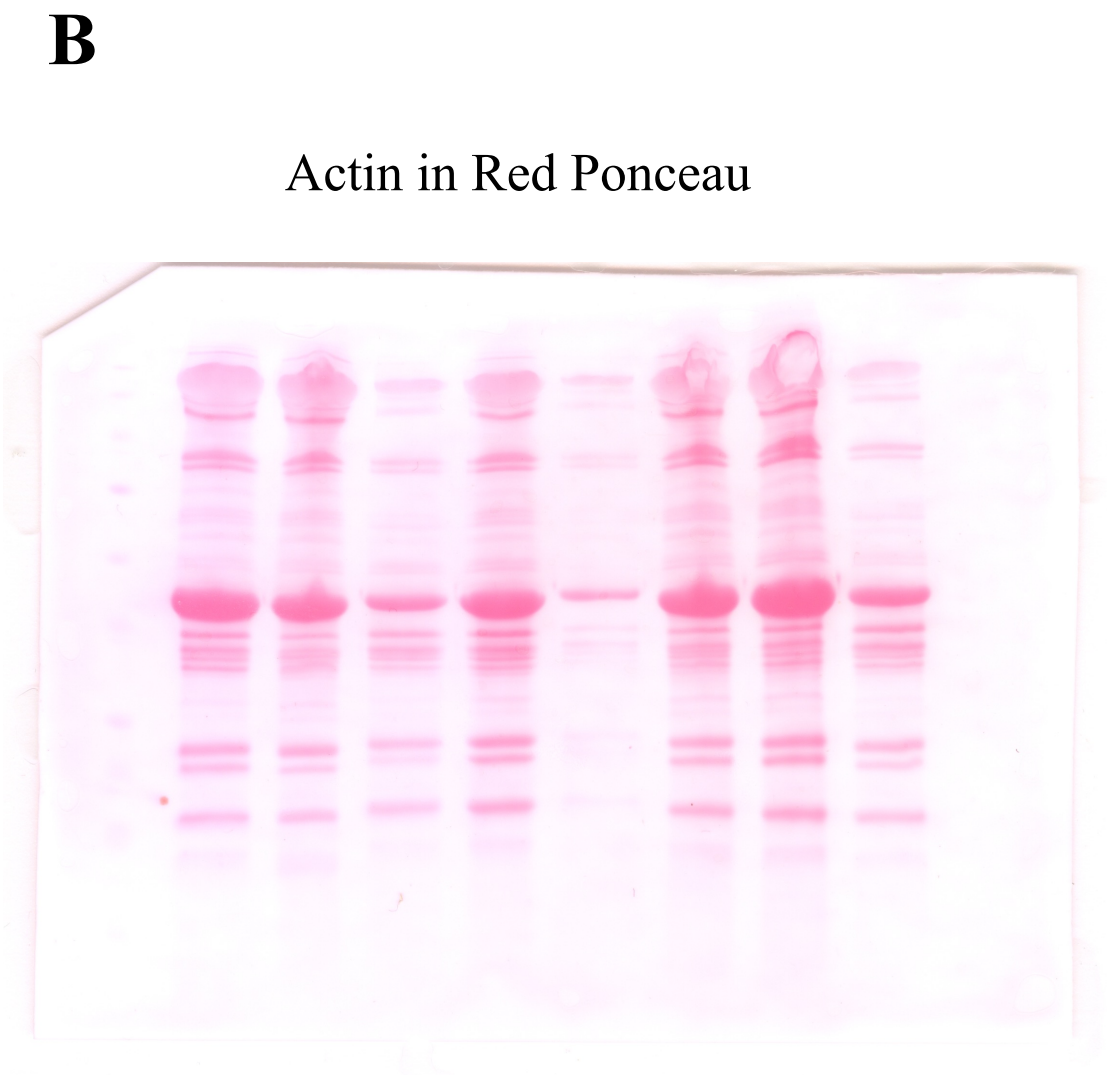
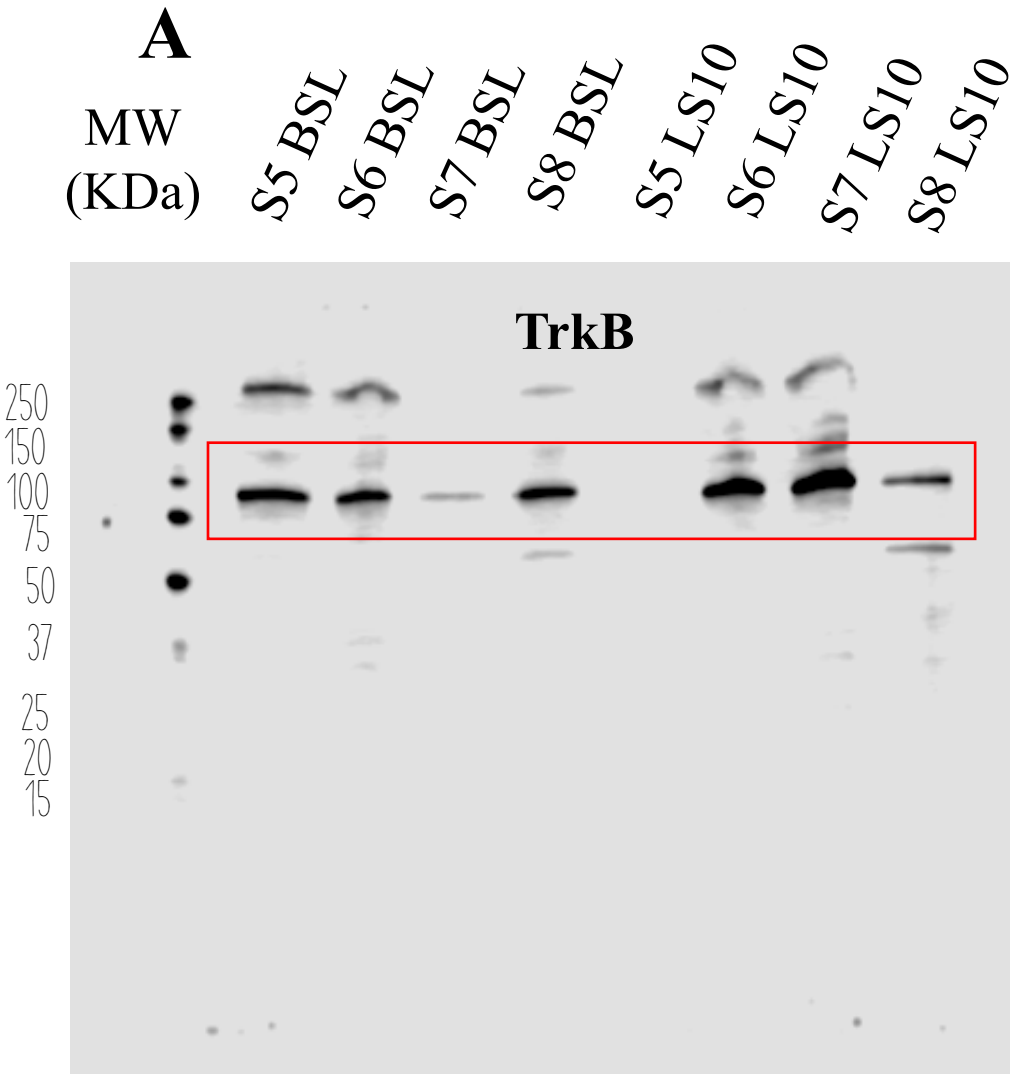


**Figure S7**





**Figure S8**



**Figure S9**

