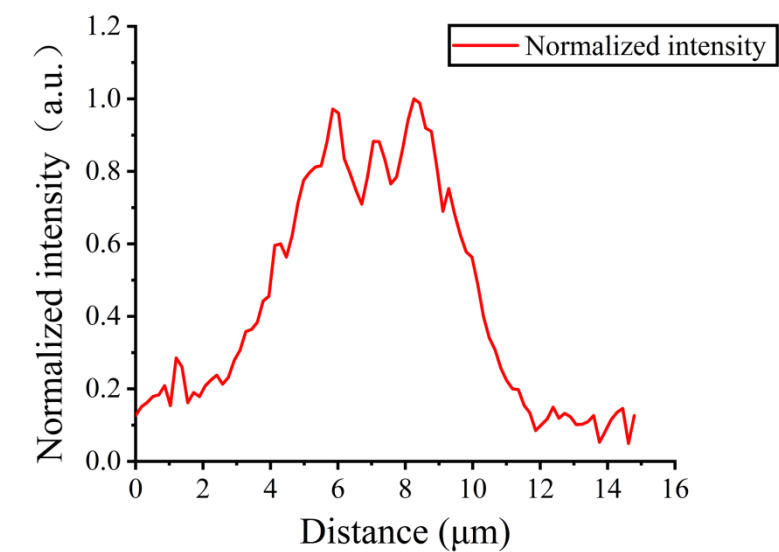
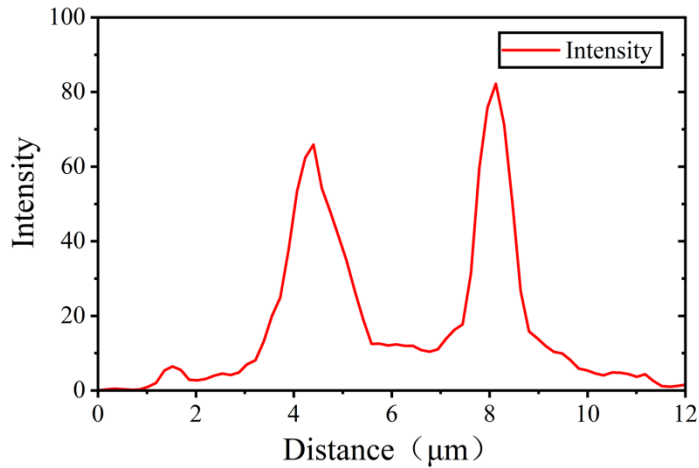


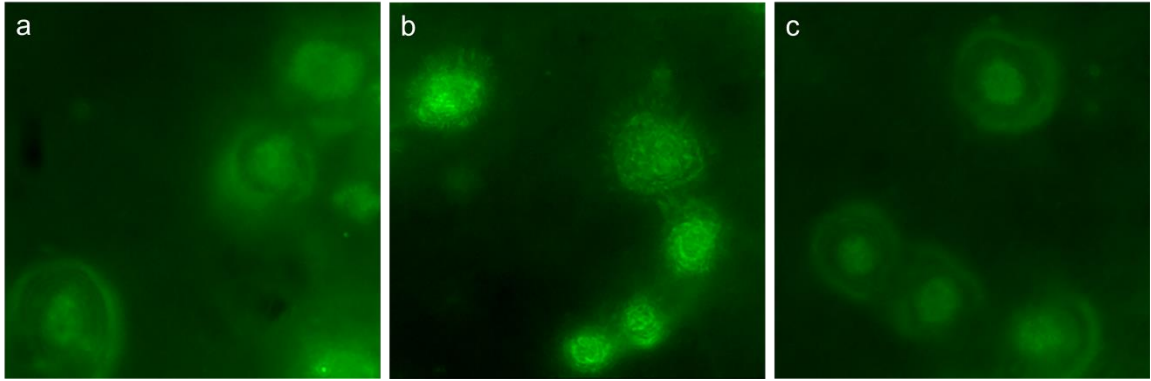
Supplementary Materials:



**Figure S1:** The cross-sectional signal along the red dashed line of the cell in Figure 4d, indicating a relatively uniform intensity of the cytoplasm and nucleus.



**Figure S2:** The cross-sectional signal along the red dashed line of the cell in Figure 6d, indicating a bright cytoplasm and rather dark nucleus.



**Figure S3:** Images from other fields. (a),(b),(c): Images of cells incubated with GNR-RGD-NLS.