

Table S1 – Baseline characteristics of patients with myocardial tissue lysates.

Characteristics	Number	Percentage / STDEV
Number of patients	61	
Sex		
Male	47	78%
Female	14	23%
Age (years)	46	±13
LVAD pre-HTx	19	31%
Survival post-HTx (years)	6.2	±7.1
Primary cardiac diagnosis		
ICM	28	46%
DCM	23	38%
HCM	3	5%
RCM	2	3%
Other	4	7%
Histological cardiac allograft vasculopathy phenotype		
H-CAV 0	12	20%
H-CAV 1	8	13%
H-CAV 2	23	37%
H-CAV 3	18	30%

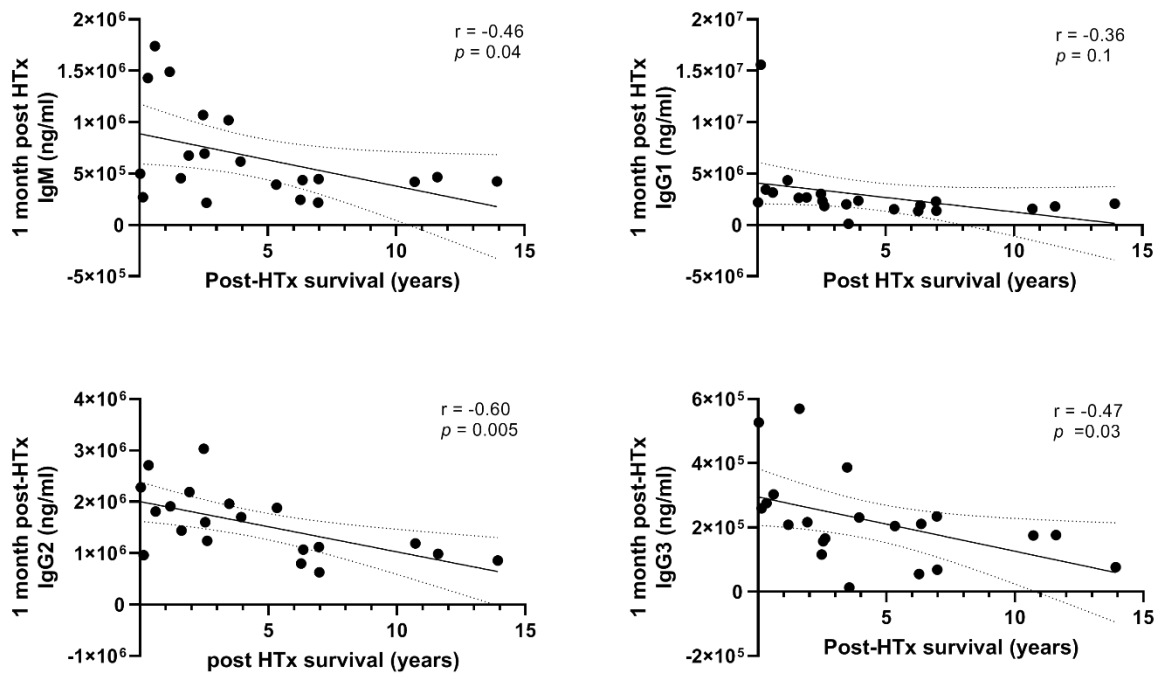
LVAD: left ventricular assist device, HTx: heart transplantation, ICM: idiopathic cardiomyopathy, DCM: dilated cardiomyopathy, HCM: hypertrophic cardiomyopathy, RCM: restrictive cardiomyopathy.

Table S2 – Baseline characteristics of subgroup of patients with available plasma samples

Characteristics	Number	Percentage / STDEV
Number of patients	36	
Sex		
Male	29	81%
Female	7	19%
Age	46	±14
LVAD pre-HTx	14	39%
Survival post-HTx (years)	2.6	±3.7
Primary cardiac diagnosis		
ICM	15	41%
DCM	13	36%
HCM	2	6%
RCM	2	6%
Other	4	11%
Histological cardiac allograft vasculopathy phenotype		
H-CAV 0	10	28%
H-CAV 1	5	14%
H-CAV 2	14	39%
H-CAV 3	7	19%

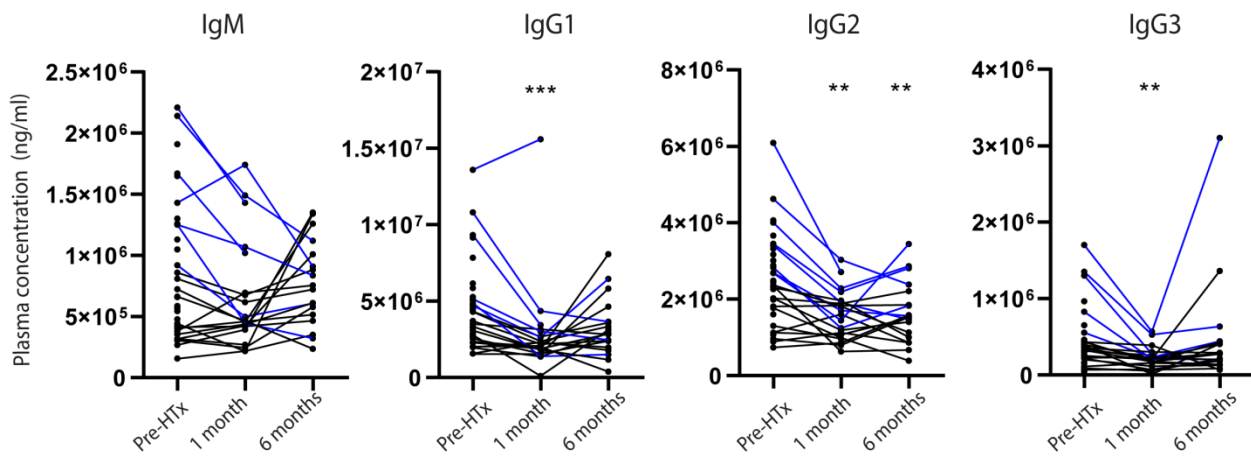
LVAD: left ventricular assist device, HTx: heart transplantation, ICM: idiopathic cardiomyopathy, DCM: dilated cardiomyopathy, HCM: hypertrophic cardiomyopathy, RCM: restrictive cardiomyopathy.

Figure S1: 1-month post-HTx circulating immunoglobulin levels are associated with survival post-HTx.



Supplemental Figure S1: In the subgroup of patients with survival of ≥ 1 month, plasma levels of different immunoglobulin subtypes were measured 1 month post-HTx using multiplex immunoassay and correlated with survival post-HTx. Levels of IgM, IgG2, and IgG3 were significantly correlated with post-HTx survival, where high immunoglobulin levels resulted in a lower survival post-HTx. *HTx: heart transplantation. n=21.*

Figure S2: Plasma levels of immunoglobulins pre- and post-HTx



Supplemental Figure S2: The levels of immunoglobulins in plasma were measured prior to HTx until 6 months post transplantation. The blue lines represent patients with high pre-HTx levels (above the mean concentration) and the black lines represent patients with low pre-HTx levels (below the mean concentration). Levels of IgG1, IgG2, and IgG3 were significantly decreased after 1 month of HTx compared to pre-HTx levels. After 6 months, immunoglobulin levels seem to increase again, albeit not statistical significant. *HTx: heart transplantation plasma samples pre-HTx n=36, 1 month n=21, 6 months n=19. ** $p < 0.01$, ** $p < 0.01$.*