

Supplementary Materials

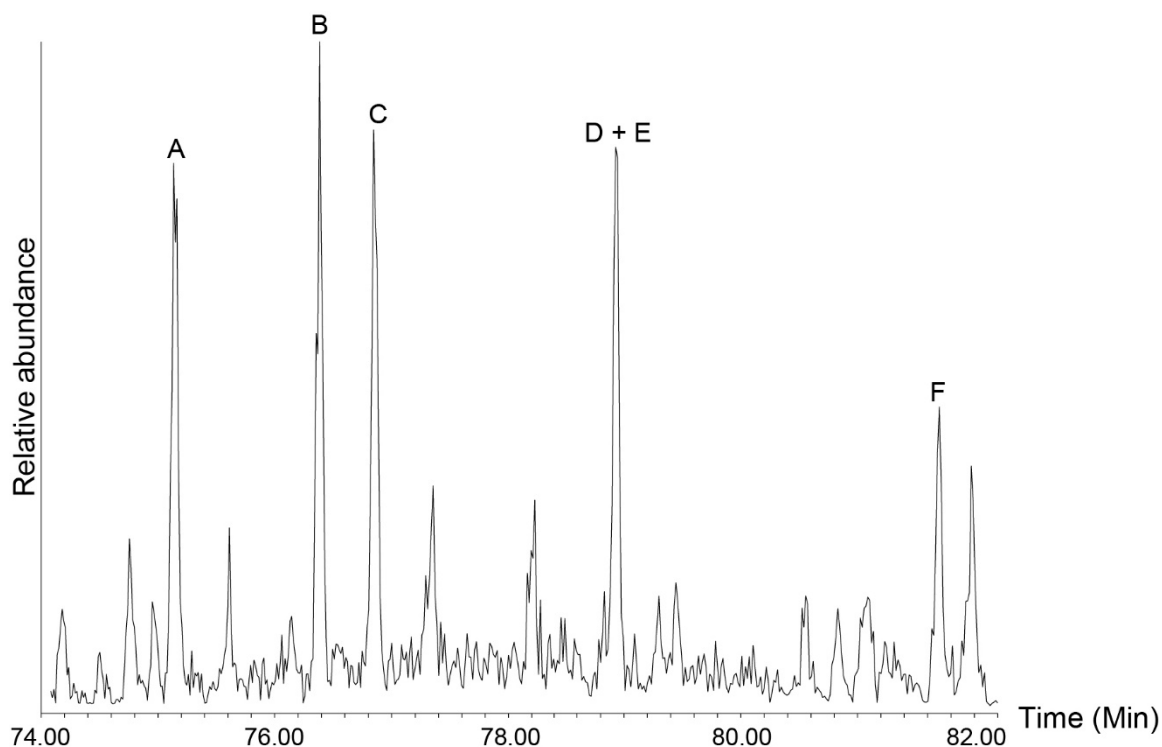


Figure S1: GC-MS m/z 257 chromatogram of aliphatic fraction showing presence of diasterenes. A: 10α , $\Delta^{13}(17)$ diacholestene 20S; B: 10α , $\Delta^{13}(17)$ diacholestene 20R; C: 10α , $\Delta^{13}(17)$ 24-methyldiacholestene 20S (*Tentatively identified based on location of *R*-isomer and mass spectrum); D: 10α , $\Delta^{13}(17)$ 24-methyldiacholestene 20R; E: 10α , $\Delta^{13}(17)$ 24-ethyldiacholestene 20S; F: 10α , $\Delta^{13}(17)$ 24-ethyldiacholestene 20R. Compounds were tentatively identified based on comparison of retention time and peak patterns with sample where compounds had been previously identified [e.g. 26], confirmed using mass spectrum of peaks.

26. Melendez I, Grice K, Schwark L. Exceptional preservation of Palaeozoic steroids in a diagenetic continuum. *Scientific Reports*. 2013;3:2768.