

Supplementary material

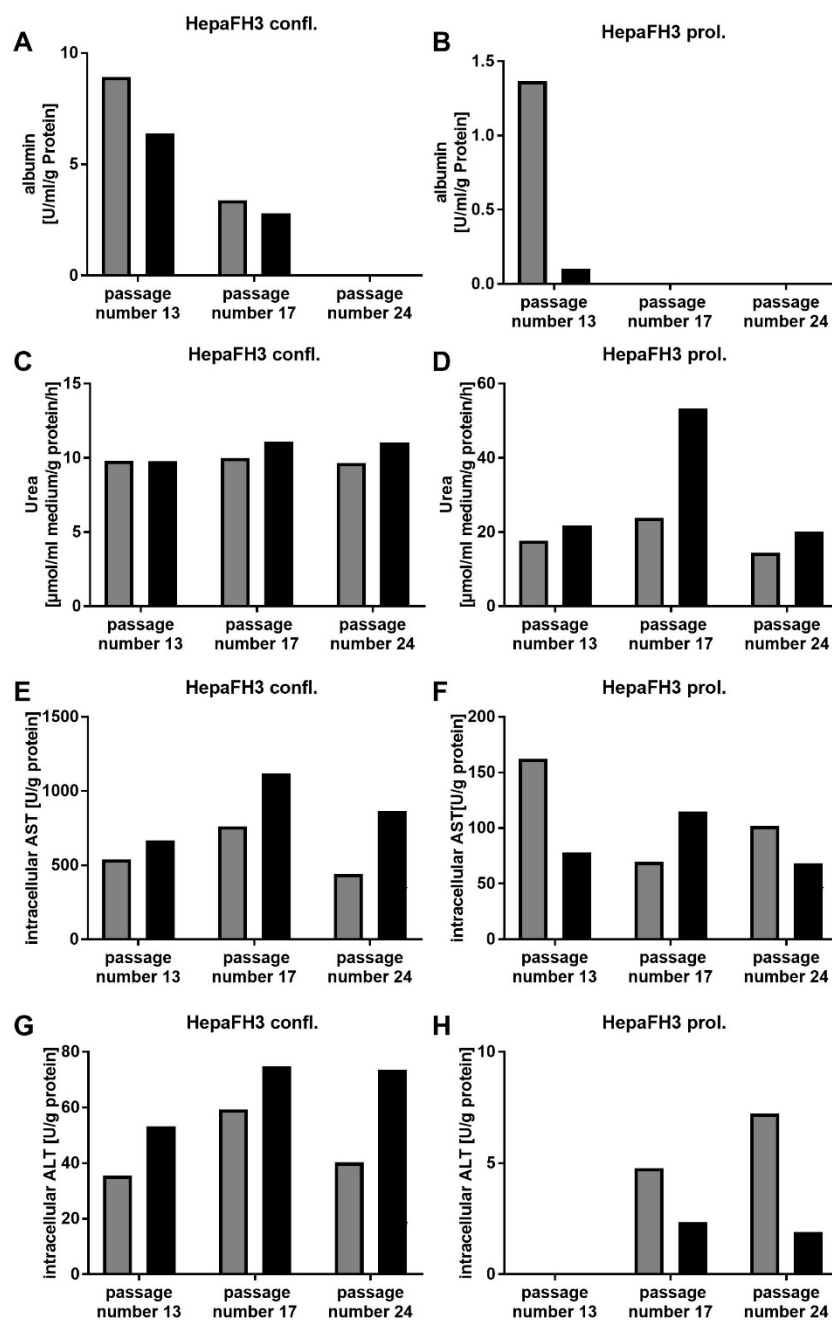
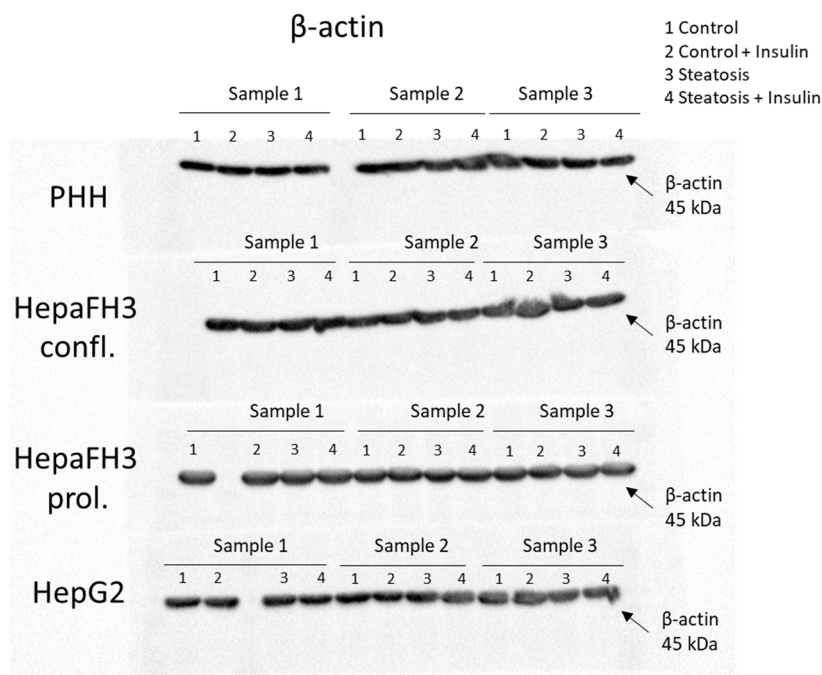


Figure S1 = Basic hepatocyte markers and their dependence on cell passage number of HepaFH3 cells. Albumin (A, B), Urea (C, D), intracellular AST (E, F) and intracellular ALT (G, H) for different cell passage numbers of differentiated and proliferating HepaFH3 cells is given. Confl. = confluent, Prol. = proliferating

A

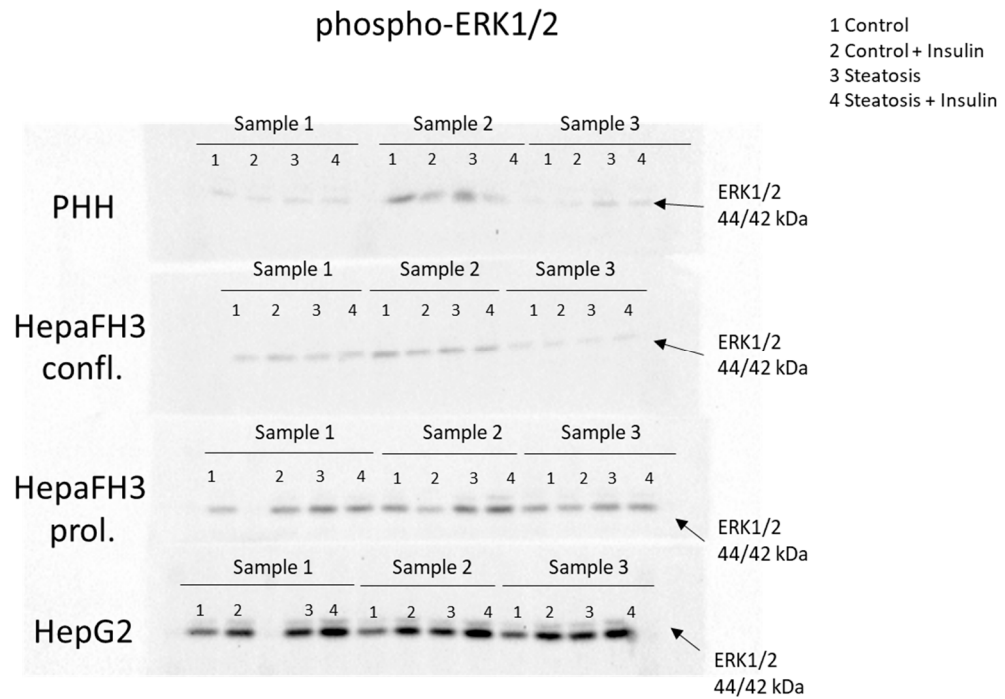


B

		densitometric readings β-actin			
		PHH	HepaFH3 confl.	HepaFH3 prol.	HepG2
		DR-Blank	DR-Blank	DR -Blank	DR -Blank
Sample 1	1	5580876	6190054	6249012	5173504
	2	5454512	5587218	6510339	5367124
	3	5722752	5981846	6400020	5451264
	4	5044172	6345040	6214725	5126828
Sample 2	1	5849984	5184816	6243864	5775196
	2	5594736	5488210	6457671	5191508
	3	5421332	5478096	6190008	5558700
	4	6721288	4810234	6189579	5035100
Sample 3	1	6494068	5690776	6284157	5226620
	2	5854184	6362850	6003591	5541676
	3	5404840	5871476	5595909	4605440
	4	4619104	5075954	5457672	5358472

Figure S2 = Western Blot analysis of β-actin (45 kDa) for PHHs, HepaFH3 confl., HepaFH3 prol. and HepG2 cells. (A) Cell lysates of the different cell types have been separated by SDS-PAGE and blotted on separate membranes. For all cell types, experiments have been performed in triplicates. (B) Densitometric readings (DR) for every band is depicted. Blank of an empty line has been deducted from the DR. Exposure time = 17 sec for all blots. PageRuler™ Prestained Protein Ladder, 10-180 kDa from Thermo Fisher was used as protein ladder. Confl. = confluent, Prol. = proliferating, DR = densitometric reading.

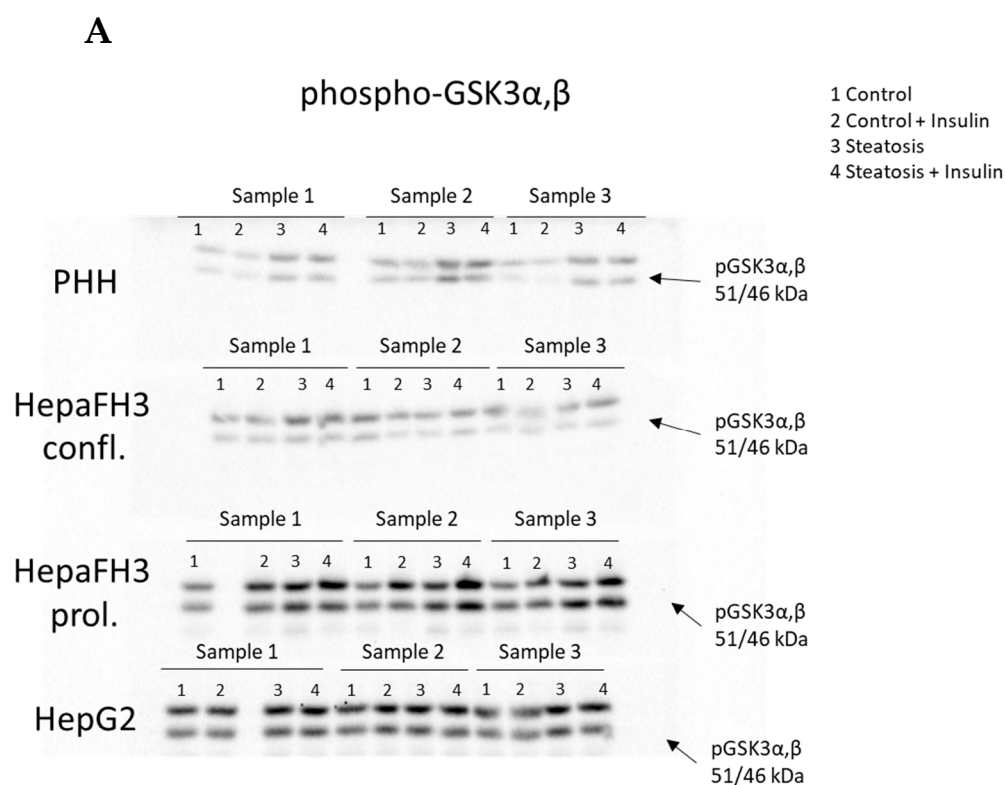
A



B

		densitometric readings pERK			
		PHH	HepaFH3 confl.	HepaFH3 prol.	HepG2
		DR- Blank	DR-Blank	DR -Blank	DR - Blank
Sample 1	1	393680	530504	660786	1004402
	2	294210	1010061	1166116	1598940
	3	398188	774150	1613472	1701336
	4	362530	926263	1419264	2558374
Sample 2	1	2143736	1658592	1245426	1103984
	2	1361388	1080001	563388	1802794
	3	2206106	1413633	1575896	1557262
	4	786758	1184222	2438590	2604448
Sample 3	1	65226	409097	1017982	1136310
	2	157612	293111	791392	1921332
	3	711662	212849	1359512	1747788
	4	295498	314301	1278158	2430316

Figure S3 = Western Blot analysis of pERK1/2 (44/42 kDa) for PHHs, HepaFH3 confl., HepaFH3 prol. and HepG2 cells. (A) Cell lysates of the different cell types have been separated by SDS-PAGE and blotted on separate membranes. For all cell types, experiments have been performed in triplicates. **(B)** Densitometric readings (DR) for every band is depicted. Blank of an empty line has been deducted from the DR. Exposure time = 335.5 sec for PHHs, 416.9 sec for HepaFH3 confl., 213.4 sec for HepaFH3 prol., 91.4 sec for HepG2. PageRuler™ Prestained Protein Ladder, 10-180 kDa from Thermo Fisher was used as protein ladder. Confl. = confluent, Prol. = proliferating, DR = densitometric reading.

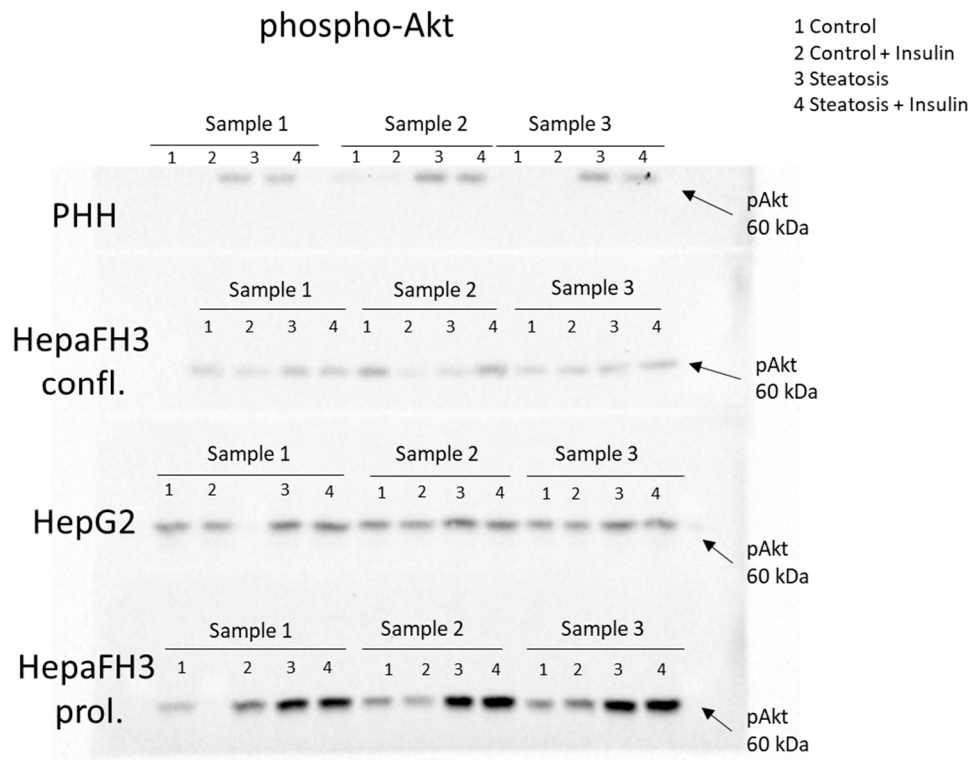


B

		densitometric readings pGSK α , β			
		PHH	HepaFH3 confl.	HepaFH3 prol.	HepG2
		DR-Blank	DR-Blank	DR -Blank	DR - Blank
Sample 1	1	498180	952000	832176	1214568
	2	448860	1061970	1287872	1285112
	3	1193947,5	1620626	1488616	1427584
	4	1123357,5	1473507	1677568	1465552
Sample 2	1	879825	1529955	862016	1261984
	2	1037542,5	853951	1295192	1295280
	3	2066775	824355	1272296	1375008
	4	1797592,5	1080527	2079552	1413944
Sample 3	1	679575	902132	962096	1042984
	2	376950	970375	1178064	1180664
	3	1312117,5	708064	1539816	1441896
	4	1196100	1275232	1690936	1366936

Figure S4 = Western Blot analysis of pGSK α , β (51/46 kDa) for PHHs, HepaFH3 confl., HepaFH3 prol. and HepG2 cells. (A) Cell lysates of the different cell types have been separated by SDS-PAGE and blotted on separate membranes. For all cell types, experiments have been performed in triplicates. **(B)** Densitometric readings (DR) for every band is depicted. Blank of an empty line has been deducted from the DR. Exposure time = 141.4 sec for PHHs, 141.4 sec for HepaFH3 confl., 50.3 sec for HepaFH3 prol., 50.3 sec for HepG2. PageRuler™ Prestained Protein Ladder, 10-180 kDa from Thermo Fisher was used as protein ladder. Confl. = confluent, Prol. = proliferating, DR = densitometric reading.

A



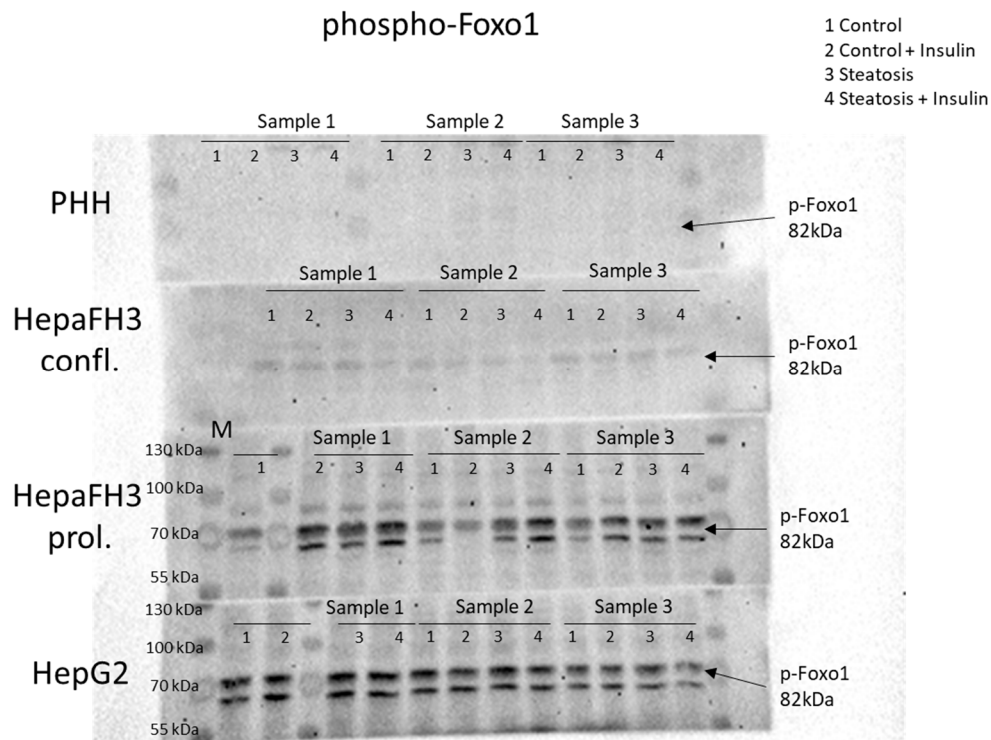
B

		densitometric readings pAkt			
		PHH	HepaFH3 confl.	HepaFH3 prol.	HepG2
		DR-Blank	DR-Blank	DR -Blank	DR -Blank
Sample 1	1	0	1134140	325935	325935
	2	0	682696	903825	903825
	3	1479422	1382388	1747080	1747080
	4	1268274	1185282	1798095	1798095
Sample 2	1	292712	2055564	568035	568035
	2	139020	387268	430545	430545
	3	2347254	746788	1930155	1930155
	4	1926582	2073988	2473500	2473500
Sample 3	1	0	877086	579390	579390
	2	0	991662	832470	832470
	3	2163182	1031814	2177550	2177550
	4	1673000	1431024	2415315	2415315

Figure S5= Western Blot analysis of pAkt (60 kDa) for PHHs, HepaFH3 confl., HepaFH3 prol. and HepG2 cells.

(A) Cell lysates of the different cell types have been separated by SDS-PAGE and blotted on separate membranes. For all cell types, experiments have been performed in triplicates. (B) Densitometric readings (DR) for every band is depicted. Blank of an empty line has been deducted from the DR. Exposure time = 266.2 sec for PHHs, 266.2 sec for HepaFH3 confl., 55.2 sec for HepaFH3 prol., 55.2 sec for HepG2. *PageRuler™ Prestained Protein Ladder, 10-180 kDa from Thermo Fisher* was used as protein ladder. Confl. = confluent, Prol. = proliferating, DR = densitometric reading.

A



B

		densitometric readings pFoxo1			
		PHH	HepaFH3 confl.	HepaFH3 prol.	HepG2
		DR-Blank	DR-Blank	DR -Blank	DR -Blank
Sample 1	1	13286	203775	505980	636847,5
	2	0	178425	1012845	924442,5
	3	27174	184020	830557,5	717727,5
	4	9254	24465	1145902,5	941692,5
Sample 2	1	0	15030	569430	667890
	2	0	49920	291510	577702,5
	3	48132	0	795037,5	764977,5
	4	149548	0	819870	538117,5
Sample 3	1	0	189120	541380	427455
	2	0	187740	559755	476587,5
	3	291004	195285	580335	488175
	4	98476	52020	798082,5	329692,5

Figure S6= Western Blot analysis of pFoxo1 (82 kDa) for PHHs, HepaFH3 confl., HepaFH3 prol. and HepG2 cells. (A) Cell lysates of the different cell types have been separated by SDS-PAGE and blotted on separate membranes. For all cell types, experiments have been performed in triplicates. **(B)** Densitometric readings (DR) for every band is depicted. Blank of an empty line has been deducted from the DR. Exposure time = 600 sec for all blots. PageRuler™ Prestained Protein Ladder, 10-180 kDa from Thermo Fisher was used as protein ladder. Confl. = confluent, Prol. = proliferating, DR = densitometric reading, M = marker.