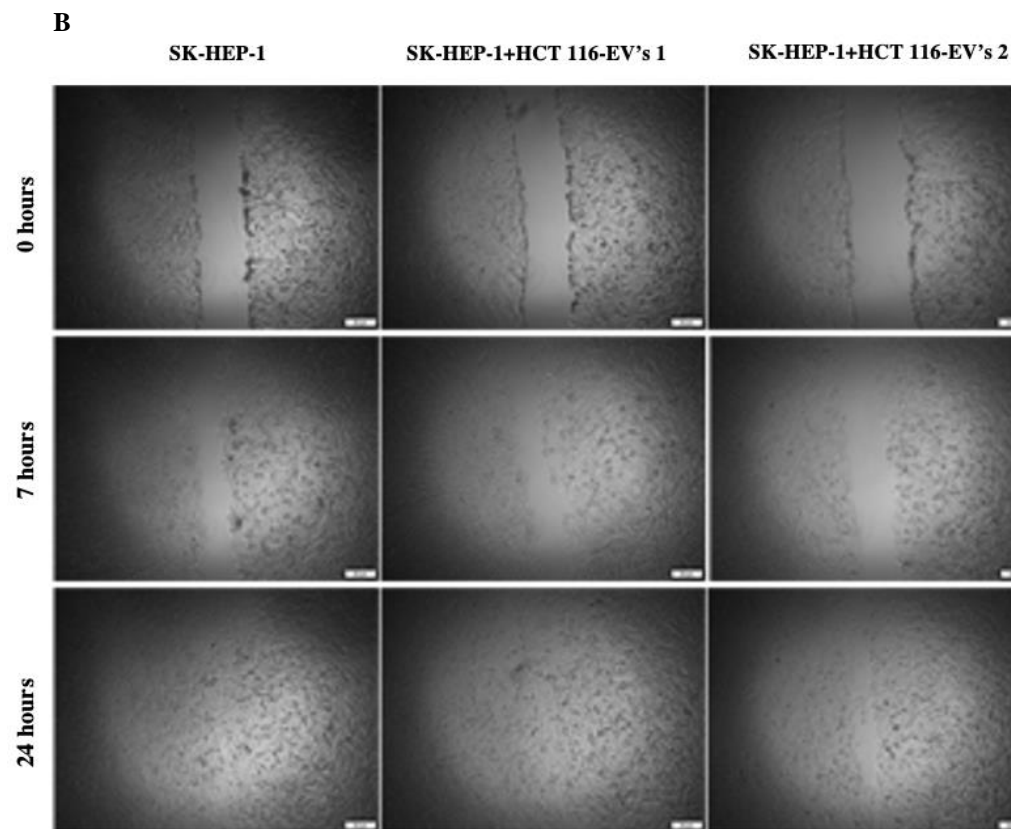
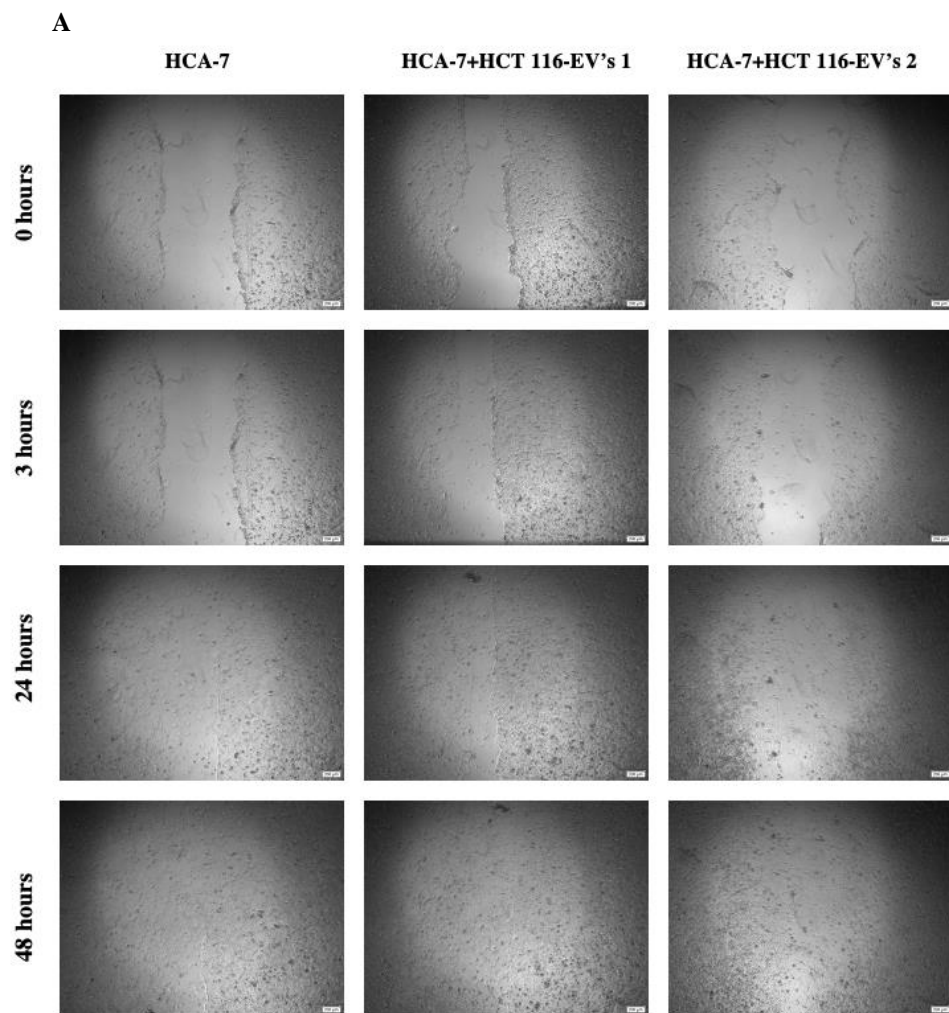


Supplementary Material

Extracellular vesicles derived-LAT1 mRNA as a powerful inducer of colorectal cancer aggressive phenotype

Cristina Almeida ^{1,*}, Ana Luísa Teixeira ^{1,3,*}, Francisca Dias¹, Vera Machado ¹,
Mariana Moraes ¹, Gabriela Martins ⁴, Carlos Palmeira ^{4,5,6}, Sílvia Batista ⁷, Bruno Costa-Silva ⁷
and Rui Medeiros ^{1,2,3,6,7,8}



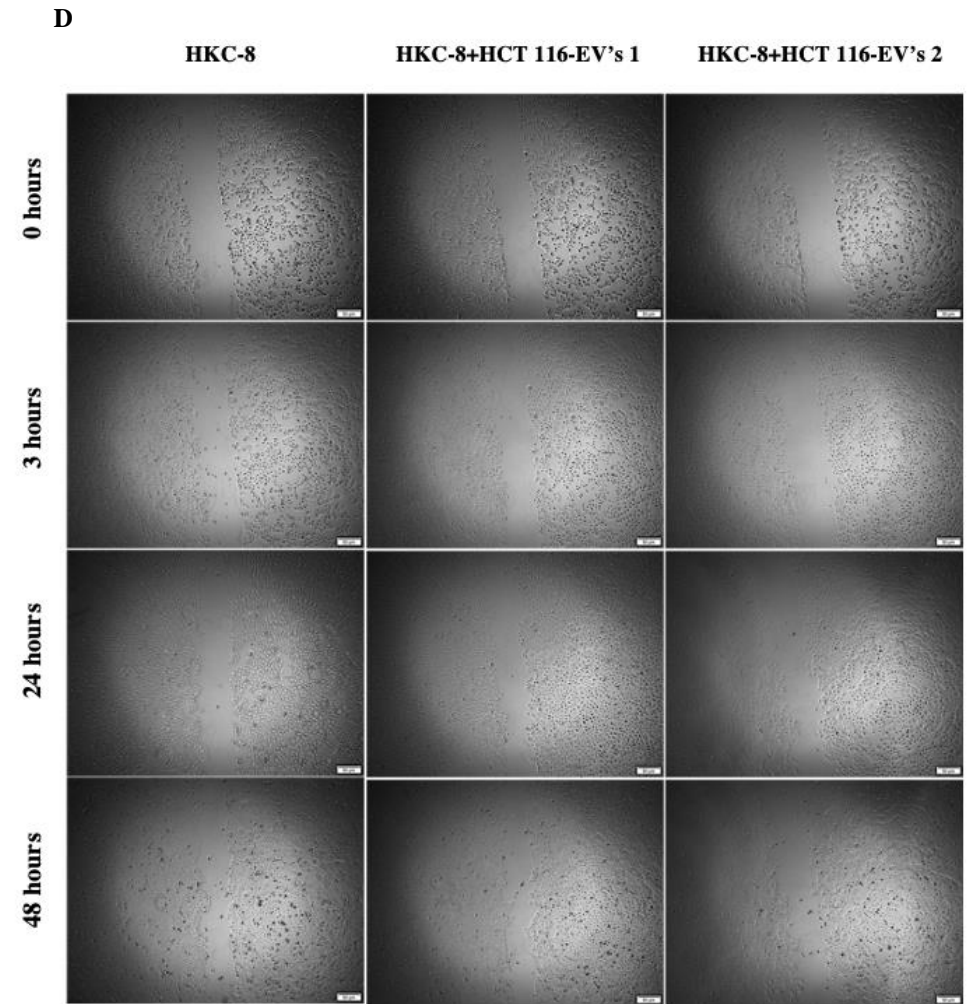
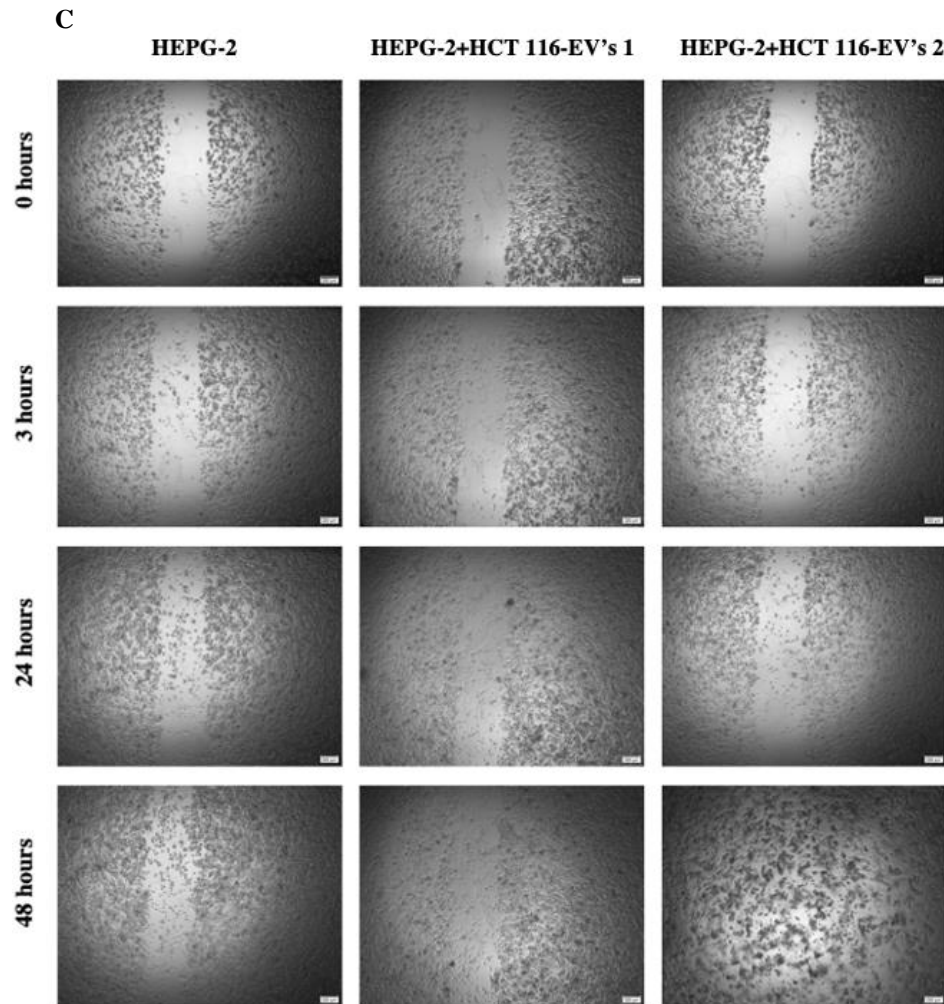
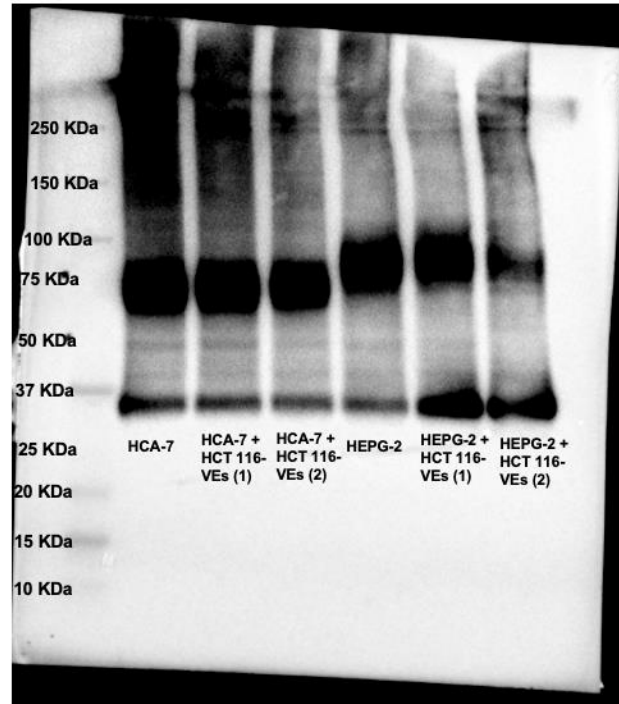


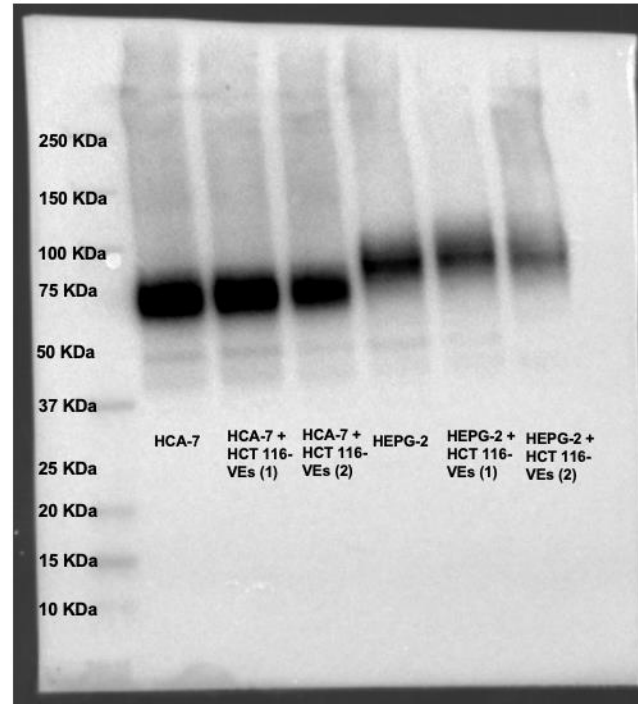
Figure Supplementary 1. Representative images of wound healing assay in (A) HCA-7, (B) SK-HEP-1, (C) HEPG-2 and (D) HKC-8 recipient cells, with respective uptakes of HCT 116-EV's (1 and 2), in the different time points. (A) and (B) Scale bar = 200 μ m.

A

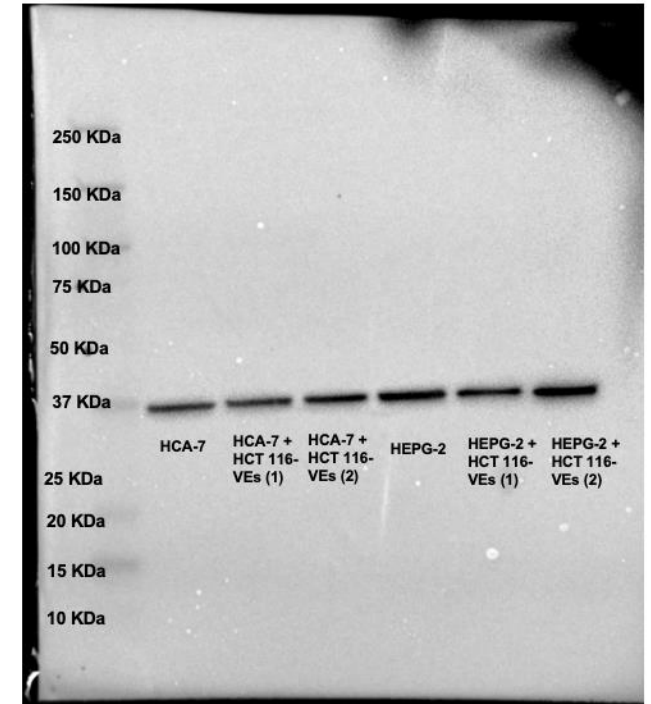
LAT1



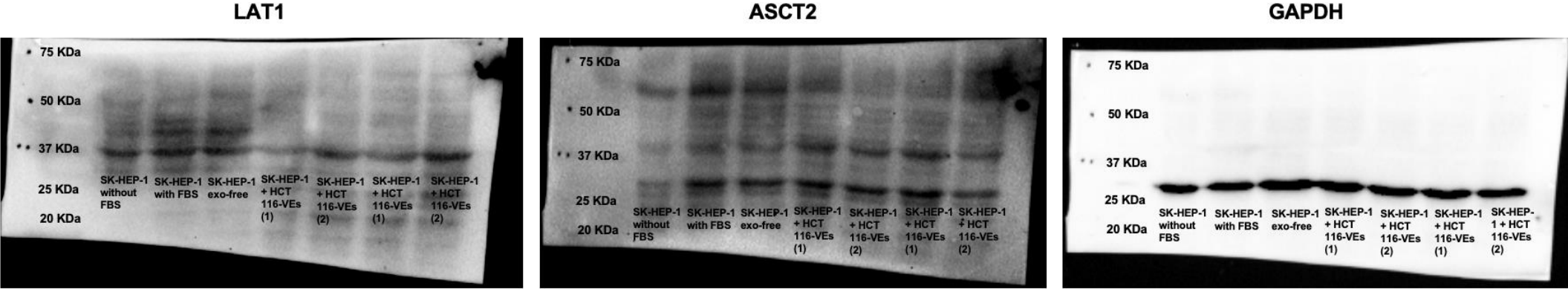
ASCT2



GAPDH



B



C

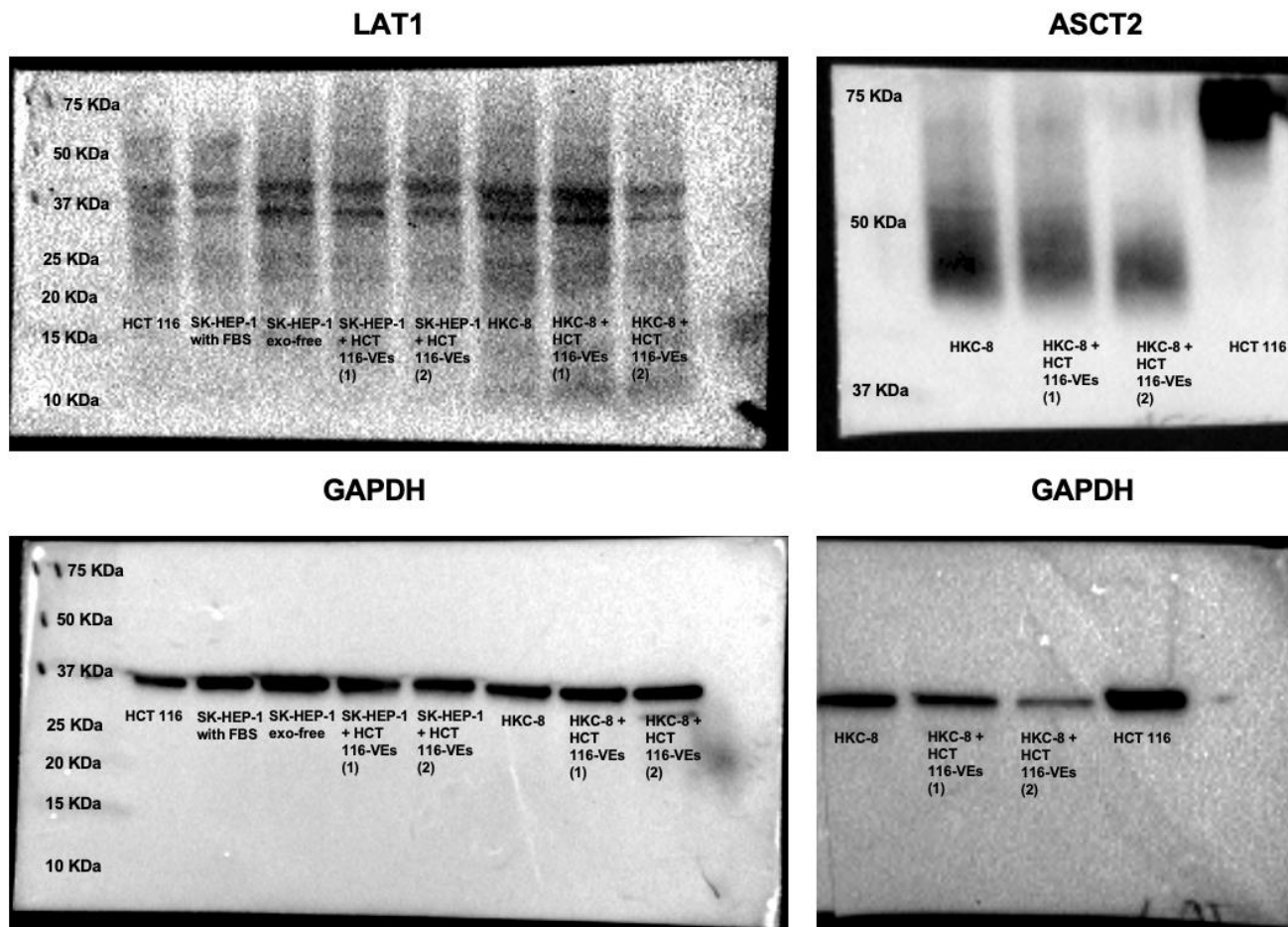


Figure Supplementary 2. Representative original images of Western Blot assay in **A)** HCA-7, HEPG-2, **B)** SK-HEP-1 and **C)** HKC-8 recipient cells, with respective uptakes of HCT 116-EV's (1 and 2).