

a

Normal

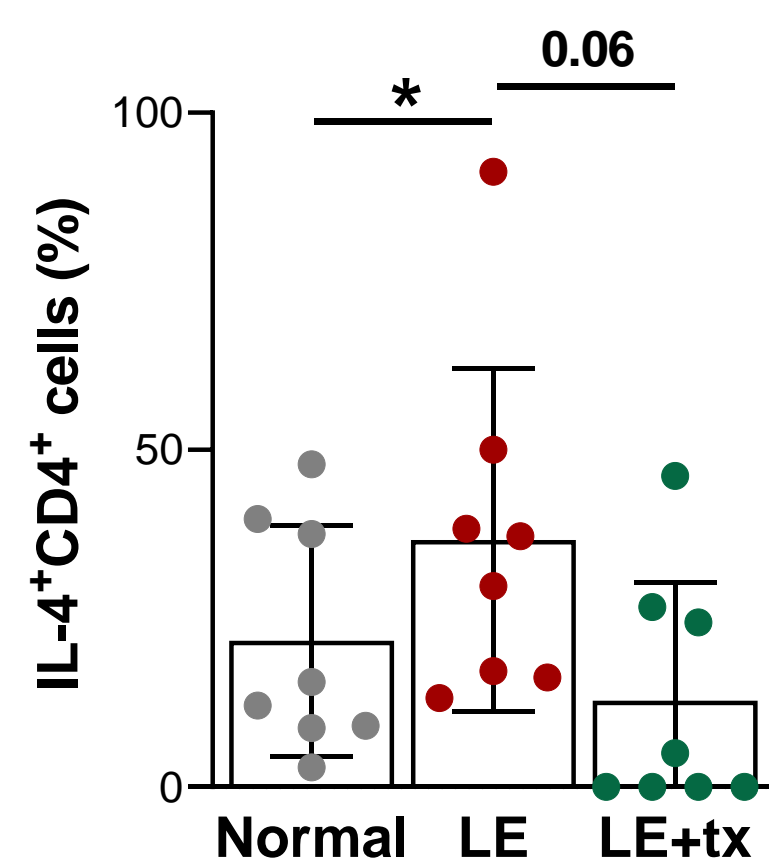
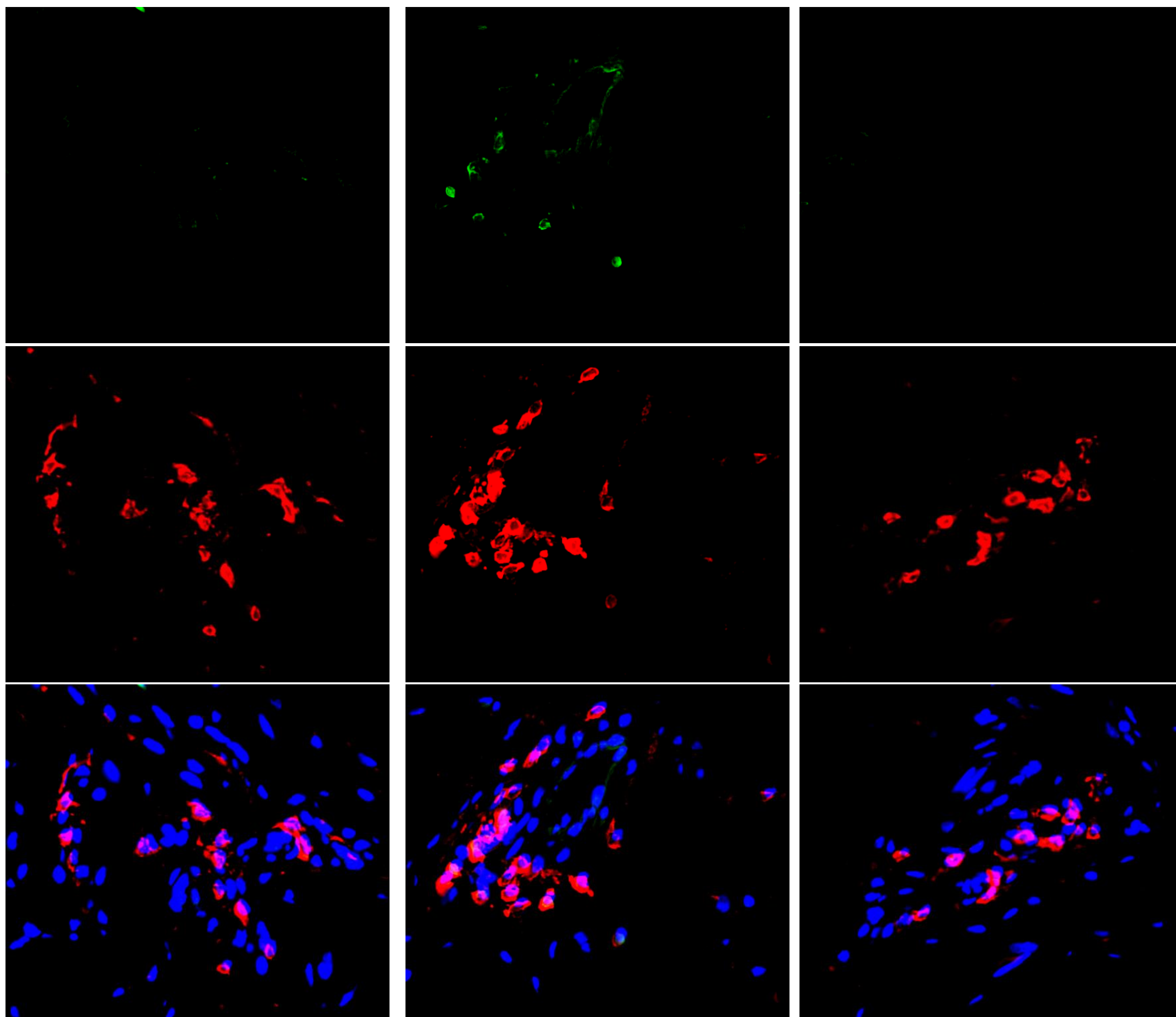
LE

Post-tx LE

IL4

CD4

Merged

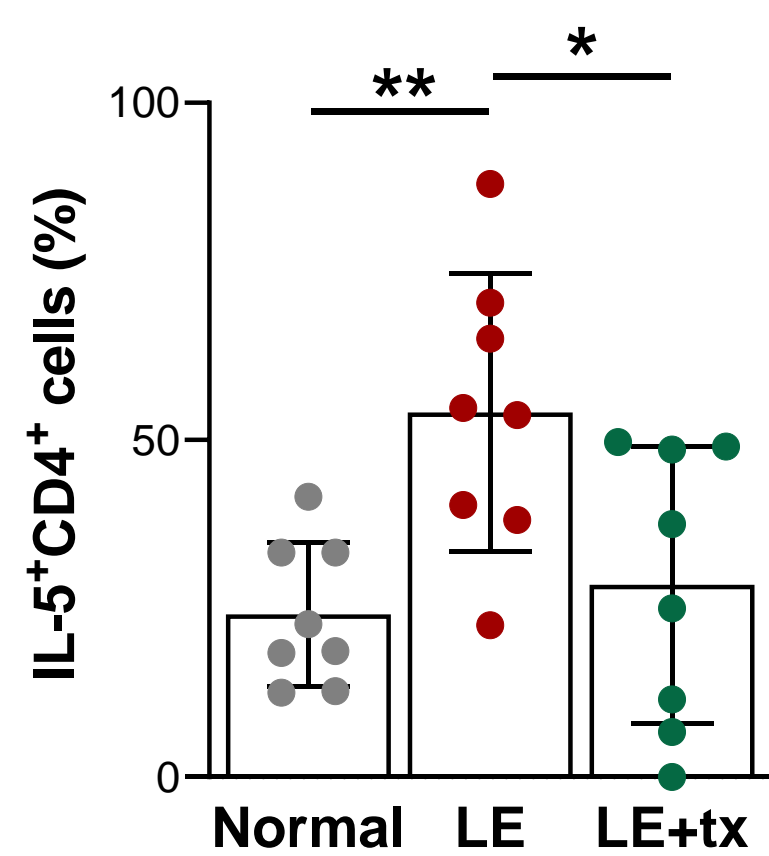
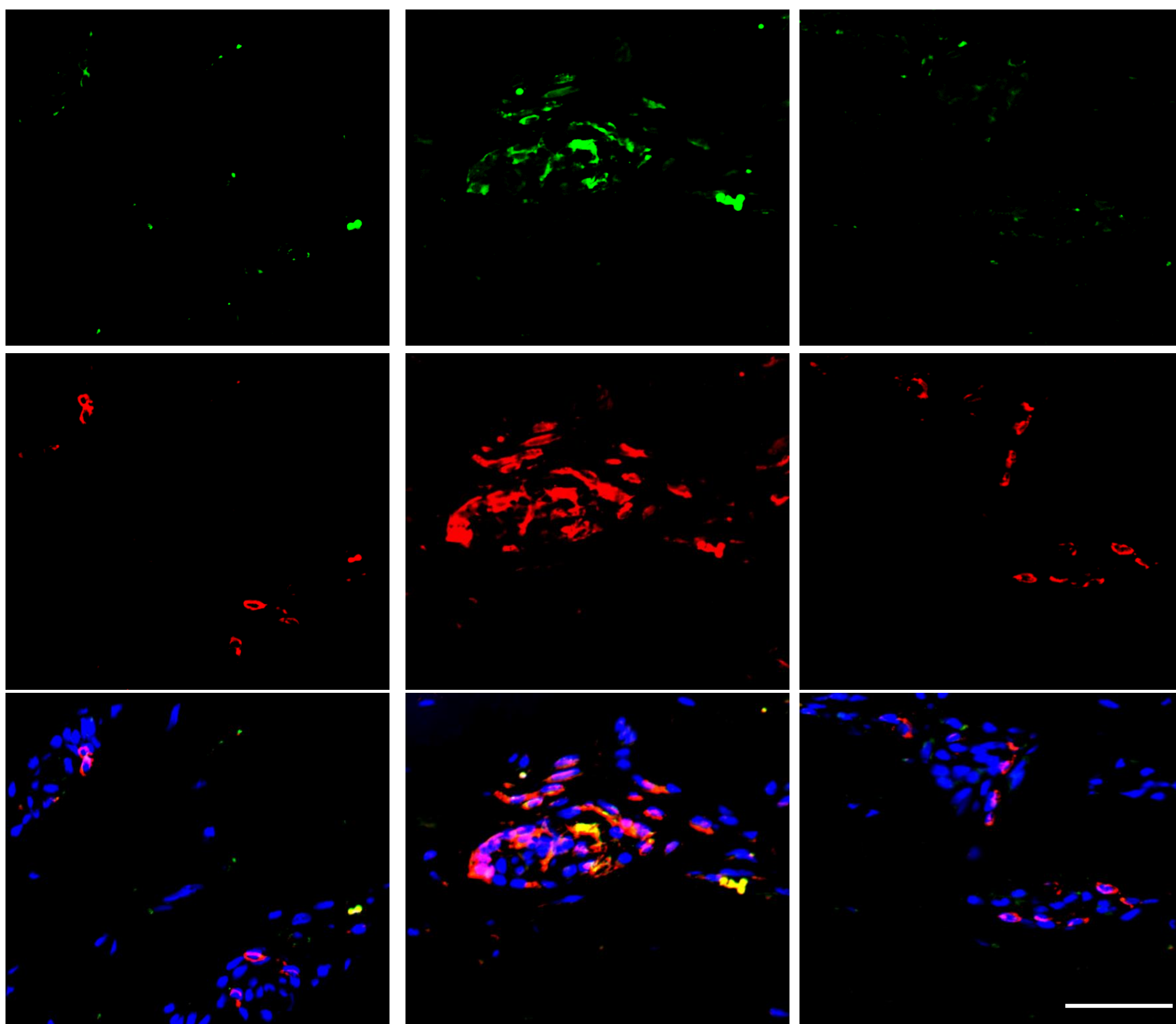


b

IL5

CD4

Merged



Supplementary Figure 1. Treatment with QBX258 decreases the number of putative Th2 cells in lymphedema biopsy specimens. Scale bar: 200 μm; P* < 0.05; P < 0.01.**

- a. Representative immunofluorescent staining (left panels) and quantification (right panel) of IL4 (green, top panels), CD4 (red), DAPI (blue) merged images in normal, LE, LE+tx biopsy specimens.
- b. Representative immunofluorescent staining (left panels) and quantification (right panel) of IL5 (green, top panels), CD4 (red), DAPI (blue) merged images in normal, LE, LE+tx biopsy specimens.